



European Union
European Regional
Development Fund



From 1st to 4th call: a learning path

Sara Banchi



RESPONSIBLE SOLUTIONS

sara.banchi@resolvo.eu

Budapest

22/01/2020

SET-UP

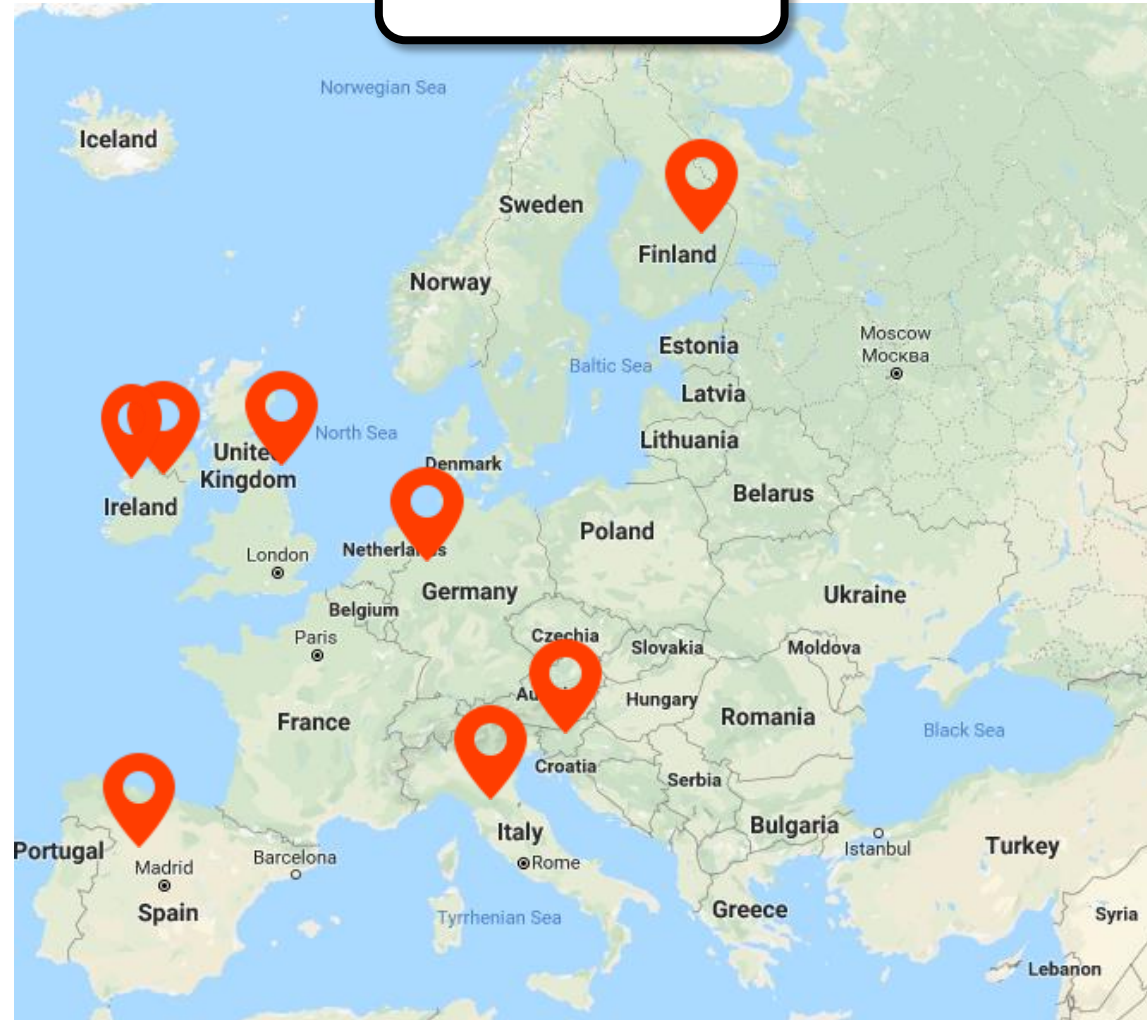
1st CALL

Improving energy performance of partner regions thanks to **better policies on smart grids.**



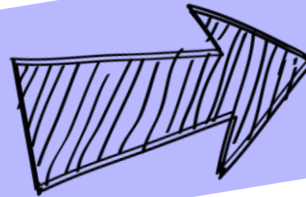
4th CALL

Guiding **EU non-energy intensive SMEs** through the investment steps to improve energy efficiency in their **processes, buildings and products**



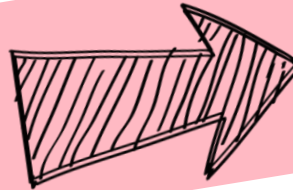
Need to adapt to changing conditions

The interregional
exchange and
action plan



**MOMENT IN
TIME**

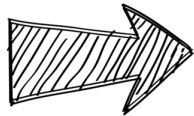
development
methodology
evolved due to...



**LEARNING
FROM
EXPERIENCE**

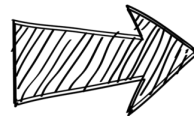
Moment in time

1st CALL



**Beginning of
the 2014-2020
ERDF
programming
period**

4th CALL

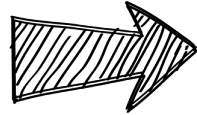


**The 2014-2020
ERDF
programming
period coming
to an end**



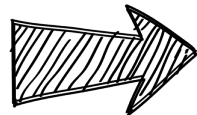
Impact on projects

1st CALL



- More time to influence the policy and its calls for proposals
- Partners were not experienced with the new ERDF programmes

4th CALL

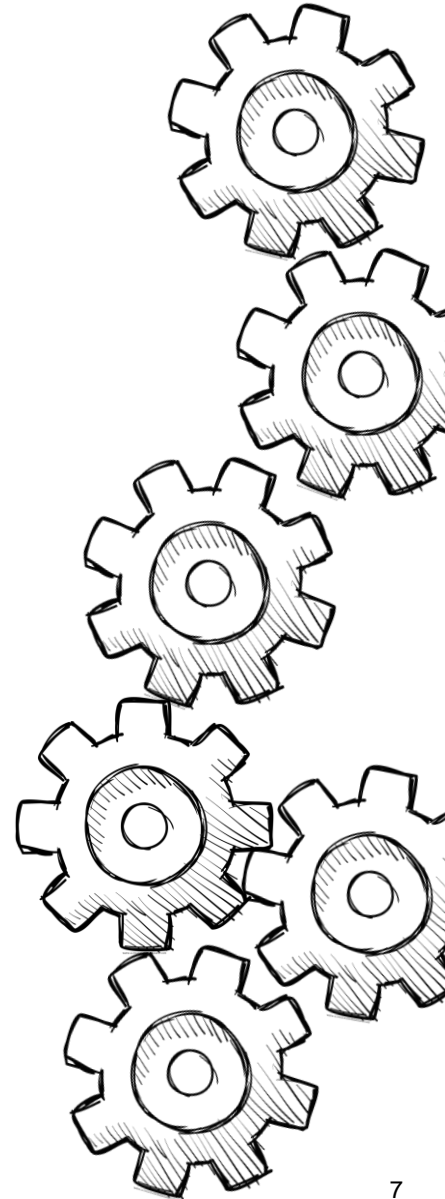


- Almost no time left to influence the calls, short time to influence the policy
- Partners know their ERDF programmes and their main needs for improvement



LEARNING from experience

- **Options** for policy improvement are many and **unexpected**
- Need to be ready to **seize any opportunity**
- Sometimes partners do not recognise the **value of a small change**
- The Action Plan (AP) development process is **very specific** and linked to the territory
- **Consistency** between needs / learning from the project / actions in AP is key



Some practical examples

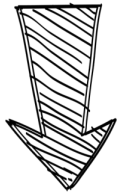


What we changed

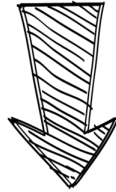


Examples from SET-UP

TERRITORIAL ANALYSIS TO IDENTIFY NEEDS and GPs



Detailed analysis that helped partners have an overview of their energy framework



It took around 1 year to be completed



It was presented and discussed with interest during project meetings

SEVERAL NEEDS WERE IDENTIFIED

Identify partners need

END OF YEAR 1

IDENTIFY THE NEEDS OF YOUR TERRITORY

45'



1 What are your main needs for the development of smart grids within your territory?
Empowering consumers / Economic models / Funding sources

NEED 1 _____
NEED 2 _____
NEED 3 _____

DISCUSS WITH YOUR PARTNER to better understand these needs together and explore them further.

TAKE YOUR NOTES HERE



Identify partners' **top 3 needs** related to the project topic

2 EVALUATE each of your needs with the support of the following table: Check your mark!

NEED 1	NEED 2	NEED 3
Do your stakeholders consider this need to be relevant?		
1 2 3 4 5 NO YES	1 2 3 4 5 NO YES	1 2 3 4 5 NO YES
Is your need related to your identified energy policy instrument?		
1 2 3 4 5 NO YES	1 2 3 4 5 NO YES	1 2 3 4 5 NO YES
Do you have the ability to take action?		
1 2 3 4 5 NO YES	1 2 3 4 5 NO YES	1 2 3 4 5 NO YES
Total /15	Total /15	Total /15



Rank them based on

- relevance for stakeholders
- link with selected Policy Instrument
- ability to take action

3 Which need got the highest score?
DESCRIBE it further here below!

DISCUSS WITH YOUR PARTNER to further clarify your needs. Answer these questions: Who? When? Where? Why? And How?

WRITE DOWN all key additional information emerged during this discussion.



Work in pairs to share results, focusing on the need with the highest ranking

Example from SME POWER

@KICK OFF

1

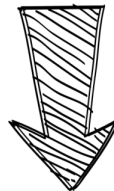
STRONG INITIAL FOCUS ON ACTION PLAN

2

EXAMPLES of GOOD PRACTICES meeting INTERREG EUROPE CRITERIA and of APPROVED ACTION PLANS

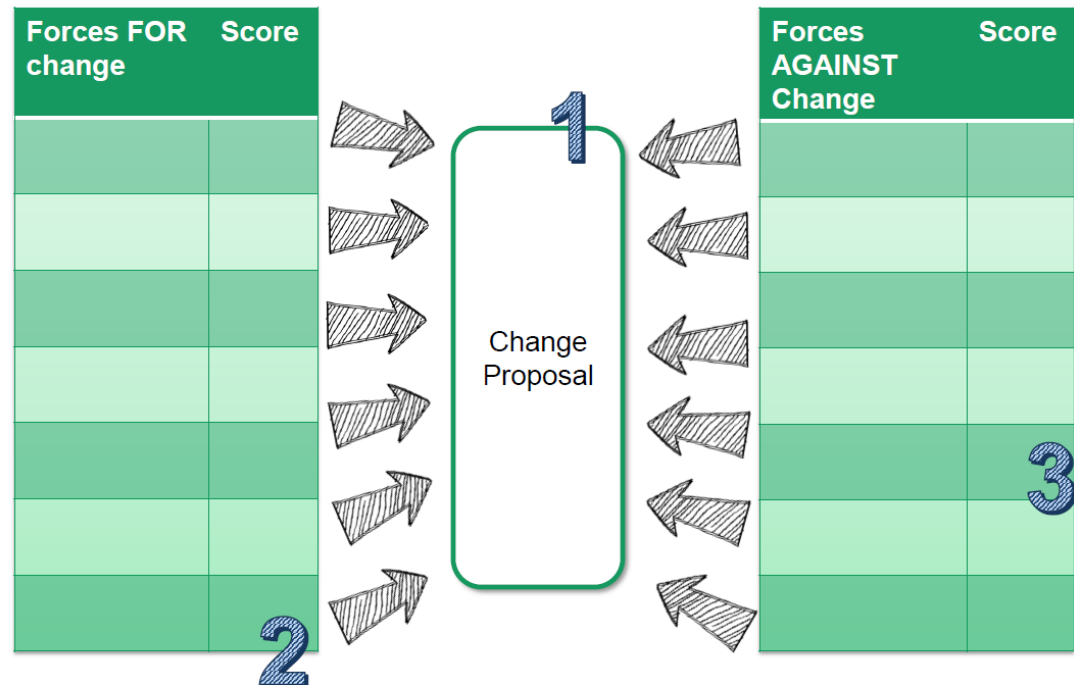
3

PARTICIPATORY WORK TO UNDERSTAND TOOLS AND
REPLICATE THE EXPERIENCE WITH STAKEHOLDERS



The Force Field Analysis

More targeted
tool for analysis:
**DONE AT 1st
STAKEHOLDER
MEETING**



BY THE END OF 1st SEMESTER ALL PARTNERS READ the finalised
Territorial analysis + SPEED DATE session during meeting

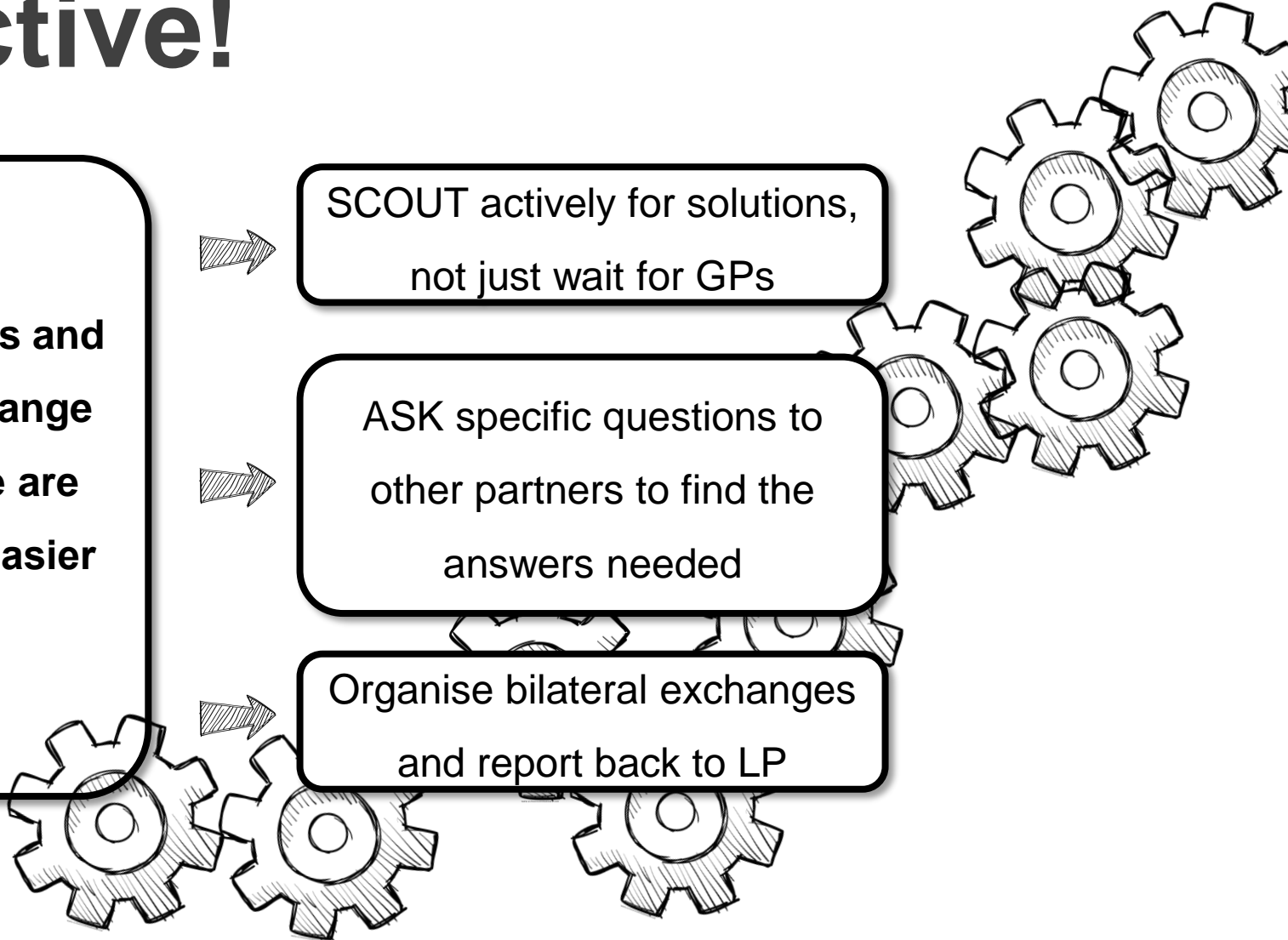
Tell partners to be proactive!

When needs and desired change to achieve are clear, it's easier to...

SCOUT actively for solutions, not just wait for GPs

ASK specific questions to other partners to find the answers needed

Organise bilateral exchanges and report back to LP



Some practical examples



**What we plan to
keep**

A white, rounded rectangular box with a black border, tilted at an angle, containing the text "What we plan to keep" in a bold, black, sans-serif font.

Explore Good Practices

TO KEEP!

Staff exchange enable partners to experience GPs first hand (e.g. exchange, study visits, meeting with stakeholders).



STAFF EXCHANGE Factsheet

PARTNER: _____ (To be completed by each partner travelling and visiting another partner's territory)

Staff exchange to _____ (include the place of the visit)

Dates: from dd/mm/yyyy to dd/mm/yyyy

Number of participants (number of people travelling): _____

Please specify if the visit was organised for internal staff only or if relevant stakeholders participated in the exchange.

If stakeholders are involved, please list their names and feedback on the staff exchange:

-

-

Good practices / Lessons learnt from the Staff exchange

Please provide a brief description of the GPs/experiences that you had the chance to examine in depth during the staff exchange (and that you might wish to use to improve your policy instrument)

Title: _____

Focus: _____

Points of relevance: _____

Title: _____

Focus: _____

Points of relevance: _____

Title: _____

Focus: _____

Points of relevance: _____



Territorial need

Please provide a brief description of the territorial need addressed by the GPs/experiences that you might use to improve your policy instrument.

Do you think to adapt the described GPs / Lesson learnt to your territory?

YES

NO

If YES, how will you adapt the described GPs / Lesson learnt to your territory?

Please provide a brief description of the modifications needed.

Examples: full transfer of the experience, inspired by the approach, inspired by the implementation, confirmation of new trends based on benchmarking, etc.

Communicate about the staff exchange

please provide some pictures and your communication outputs (i.e. press release, Tweets, articles, testimonials)

Opinion on the staff exchange organised

please provide a brief review of the overall experience

Examples: Did you have enough time to analyse the GP/lesson of interest? What did you like the most? Any suggestions for improvement, etc.

Staff exchange factsheet, in line with the Action Plan template, to:

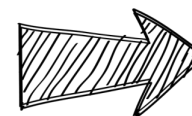
- Ensure a **link** between lessons learnt from the project and the policy improvement process
- Gather **input** and feedback from stakeholders

Peer reviews on AP

TO KEEP!

Organised during project meetings:

- set of cards provided by LP to help partners tackle all relevant IE aspects during the discussion (and not just technical aspects!)
- no LP guidance during the exercise



FOLLOWED by a bilateral Policy Help Desk call with LP and each partner...

ACTION PLAN in theory

LEARN ABOUT A
USEFUL GOOD
PRACTICE FROM
A PROJECT
PARTNER

INCLUDE IT IN
YOUR ACTION
PLAN, ADAPTING
IT TO YOUR
REGION

CHANGE YOUR
POLICY
INSTRUMENT

EASY

ACTION PLAN in real life

ALL THE FUNDS HAVE
BEEN ALLOCATED,
THERE IS NOTHING I CAN
DO

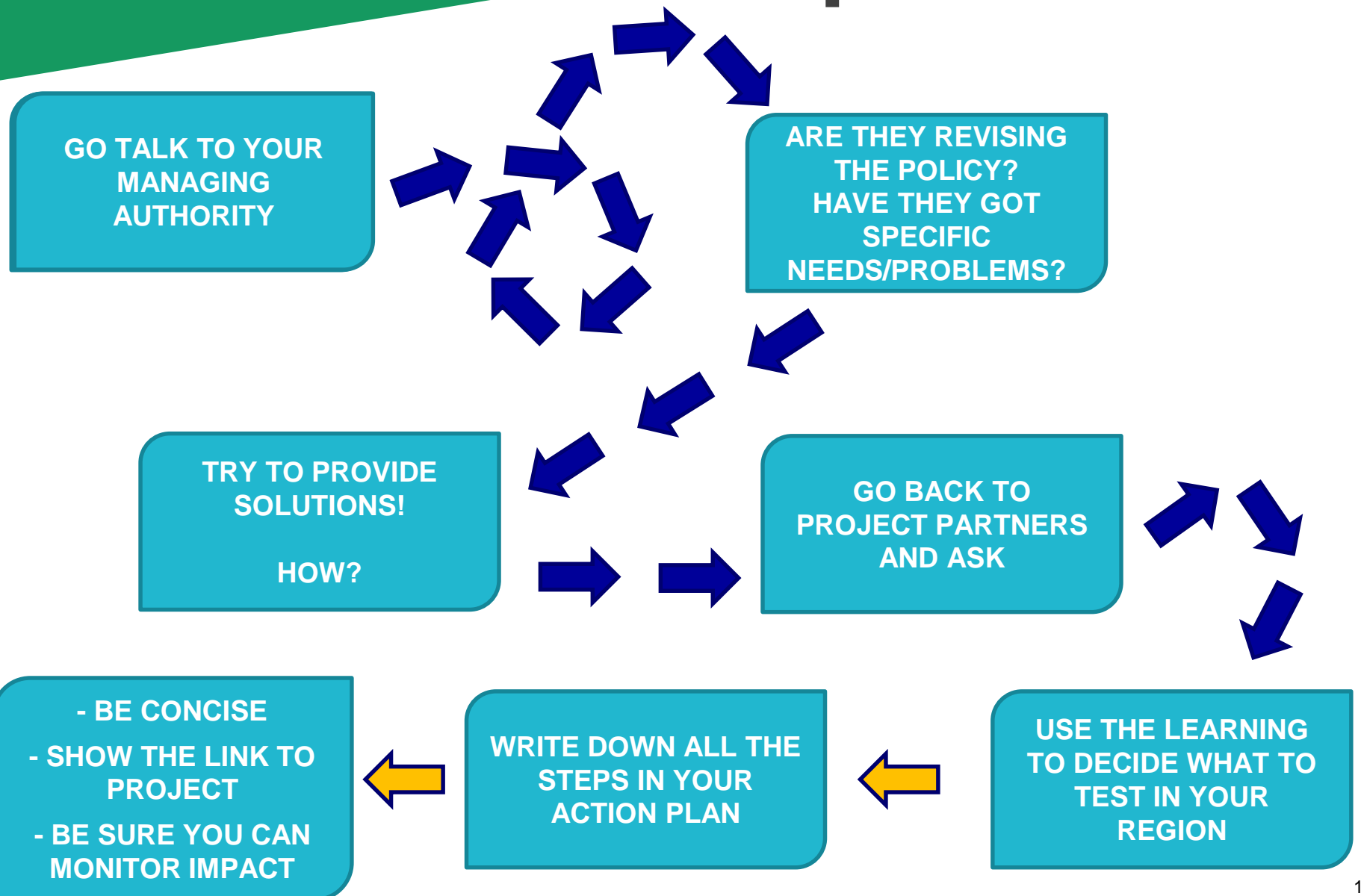
MY ACTION PLAN IS
SO CLEAR...AND YET
NOBODY
UNDERSTANDS IT

I DON'T HAVE TIME
TO WORK ON IT
BEFORE THE END
OF PHASE1

I WILL IMPROVE
ONLY POST 2020
PROGRAMMES...

Not that easy

ACTION PLAN in practice



Where to find out more

Smart Energy Transition to Upgrade regional Performance

Look at Bretagne AP

<https://www.interregeurope.eu/set-up>

LEAD PARTNER:
Bretagne Development Innovation – BDI
(Bretagne Region – France)



SMEs powering a low carbon future

<https://www.interregeurope.eu/smepower>

LEAD PARTNER
Resources Recovery Regional Agency
(Tuscany Region – Italy)



Thank you!