



BIOREGIO
Interreg Europe



Good Practice: Regional roadmap towards circular economy

Susanna Vanhamäki

RDI specialist, BIOREGIO project coordinator

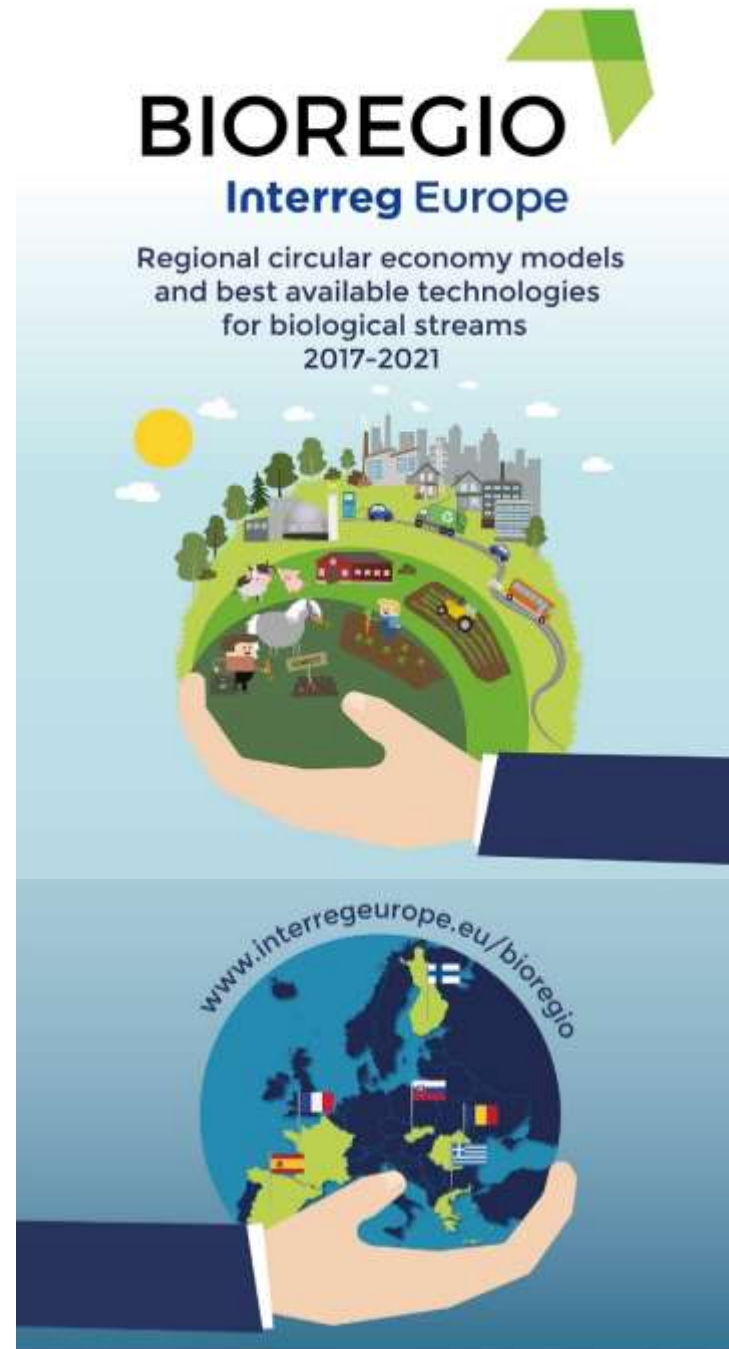
Lahti University of Applied Sciences, Finland

13.9.2018

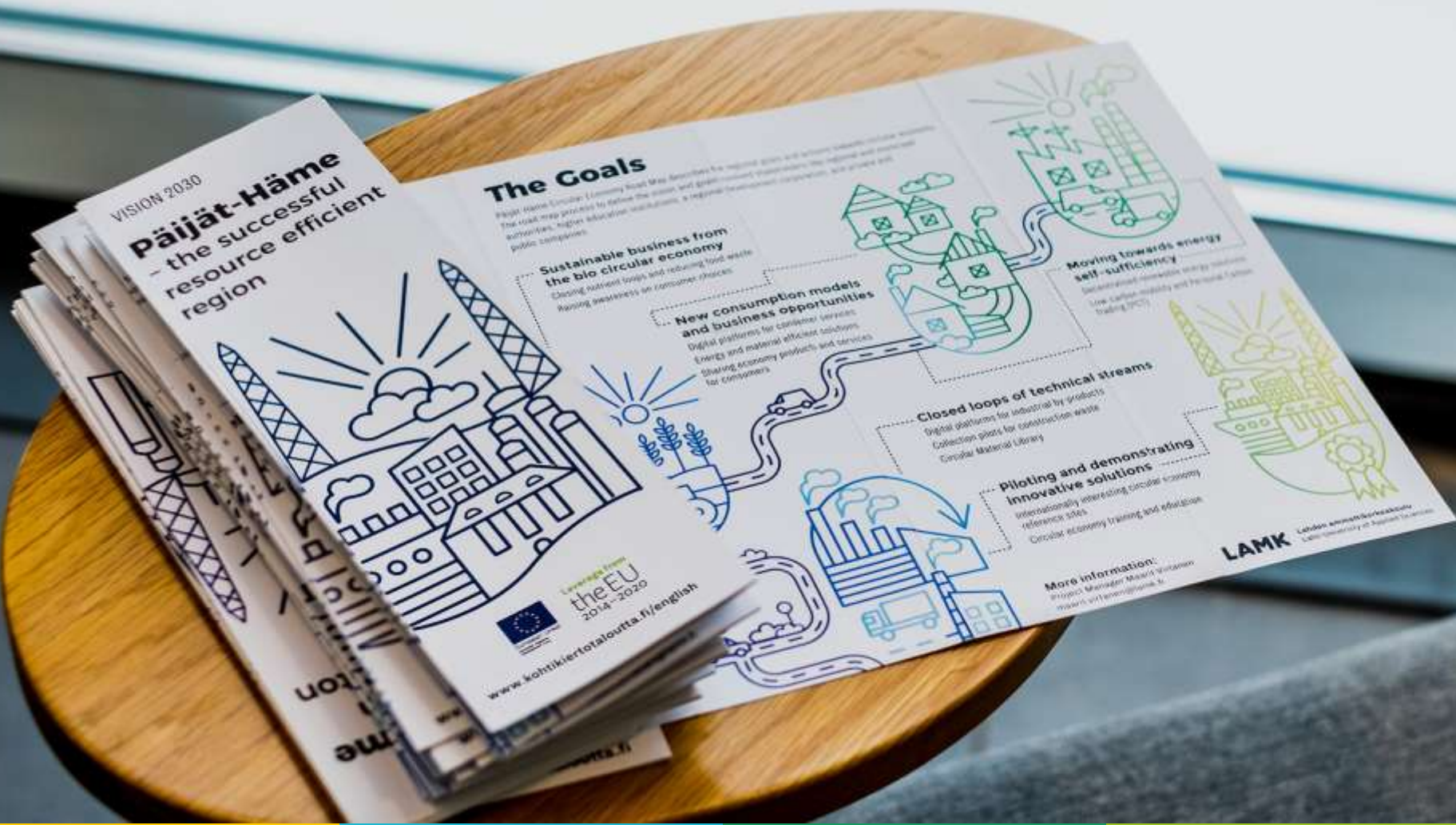
”Transferring expertise in circular economy, with focus on bio-based circular economy”

Motivation to participate in BIOREGIO:

- environment and circular economy are interests of Päijät-Häme region
- universities of applied sciences promote regional development



Regional roadmap towards circular economy



Why a roadmap?

Päijät-Häme regional development strategy and program (RIS3) spearheads:

1. Circular economy → defined in the roadmap
2. Design
3. Sports and experiences

Strong strategic support of circular economy:

- Päijät-Häme's RIS3
- Lahti, the largest city in the region
- The Finnish National Road Map towards Circular Economy (2016)

→ **2017: a roadmap for the nine municipalities in Päijät-Häme (Finland) was created**

How?

The roadmap was set up as a part of a 2,5 years long ERDF co-funded project

Key features:

- 1. the Regional Council as a key actor in the process**
 - a will to develop circular economy on strategic level
- 2. intense work with stakeholders**
 - defining the common vision, regional aims and concrete actions
- 3. process organised through:**
 - workshops, discussions for setting up the draft
 - a request for comments from additional stakeholders through a survey
 - direct contacts/emails with stakeholders


Evidence of Success

On regional level:

- a part the regional development strategy and program, RIS3
 - ERDF funding for new projects according to the roadmap
- the City of Lahti will base its roadmap on the regional one
- the region has a strong interest in continuing the implementation, e.g. BIOREGIO Action Plan

Presented in several national seminars and media resulting in contacts from other Finnish regions

Interest among BIOREGIO project partners

The background features a dark blue color with faint, light blue line-art illustrations. On the left, there is a stylized tractor with a large front wheel and a smaller rear wheel. To the right, a winding road with dashed lines curves through the scene. In the upper left, there are some abstract shapes resembling water droplets or leaves. The overall theme is related to agriculture and infrastructure.

This Good Practice is useful for regions focusing on **circular economy** for updating their strategies and policies



More information:

Susanna Vanhamäki
susanna.vanhamaki@lamk.fi

Lahti University of Applied Sciences, Finland

www.interregeurope.eu/bioregio

