

**Interreg  
Europe**



European Union | European Regional Development Fund

# Project Methodologies and RIS3 Tools - Good Practices from Interreg Europe on Monitoring, Evaluating, and Designing RIS3

## Evaluating RIS3 (Beyond EDP)

**Frederic Pinna**, Dev'up Centre Val de Loire

25 September 2019 | Brussels



# 1. Institutional Context



- The region is a “developed region”
- Centre-Val de Loire is rural and very diversified
- 2.5 M inhabitants – Density : 66/km<sup>2</sup>
- 2 universities : 50 000 students
- Industry is still strong (19%) but headquarters are not here
- Subcontractors culture
- Strong agriculture but few transforming industries
- Very close to the capital region draining businesses, researchers, etc..



# 2. The RIS3 in Centre Val de Loire



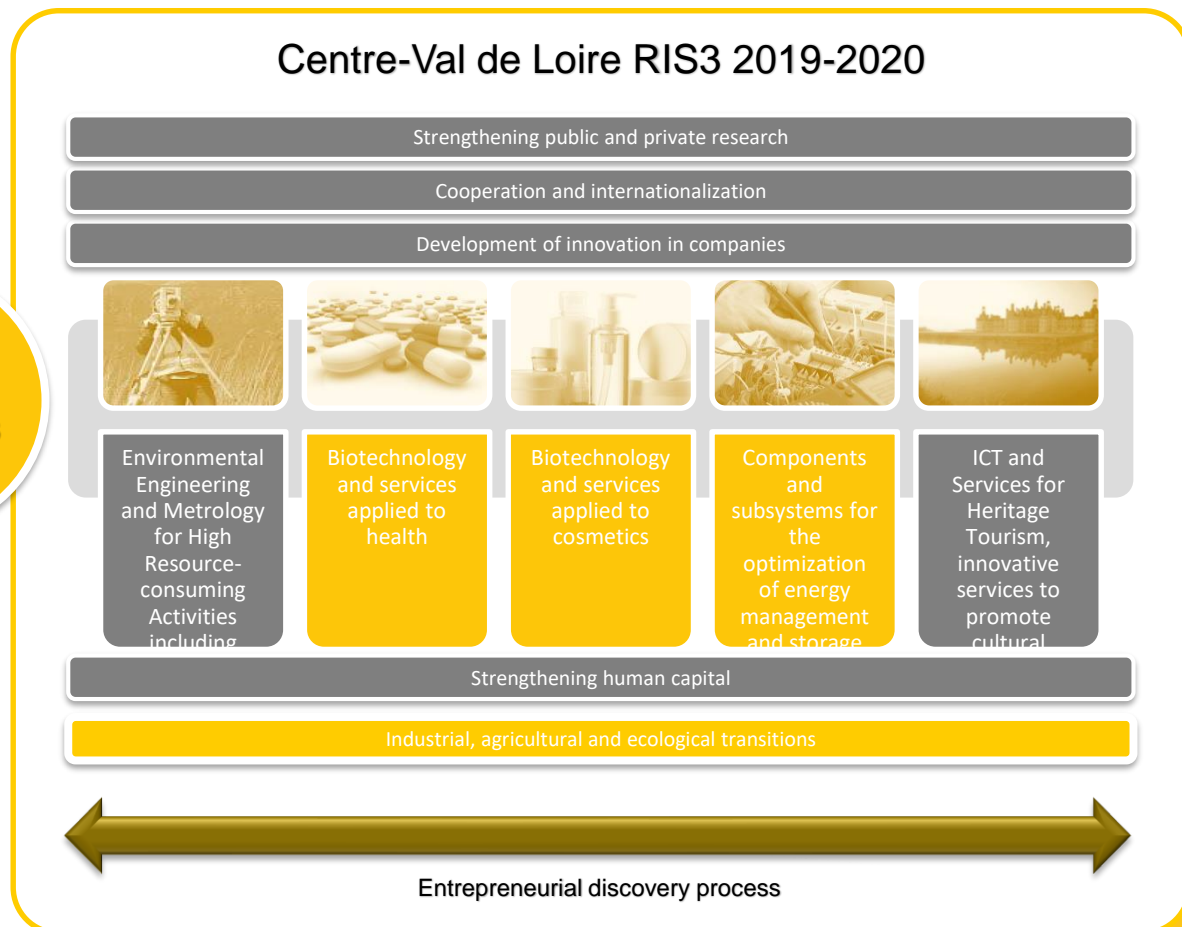
- By the regional Strategic Committee of Innovation on 18 December 2018

Mid-term evaluation of the CVL RIS3

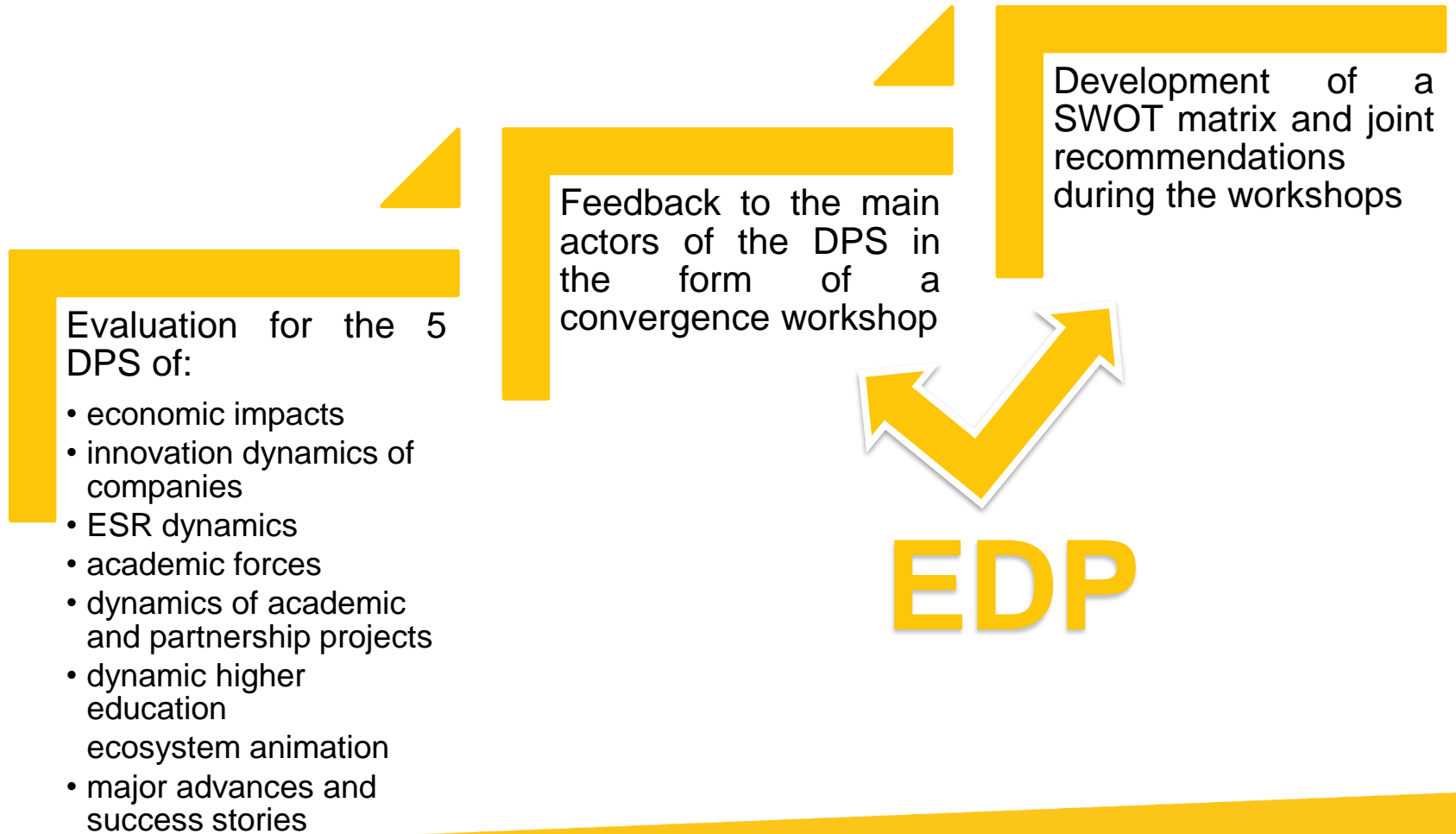


Proposition of a new update RIS3

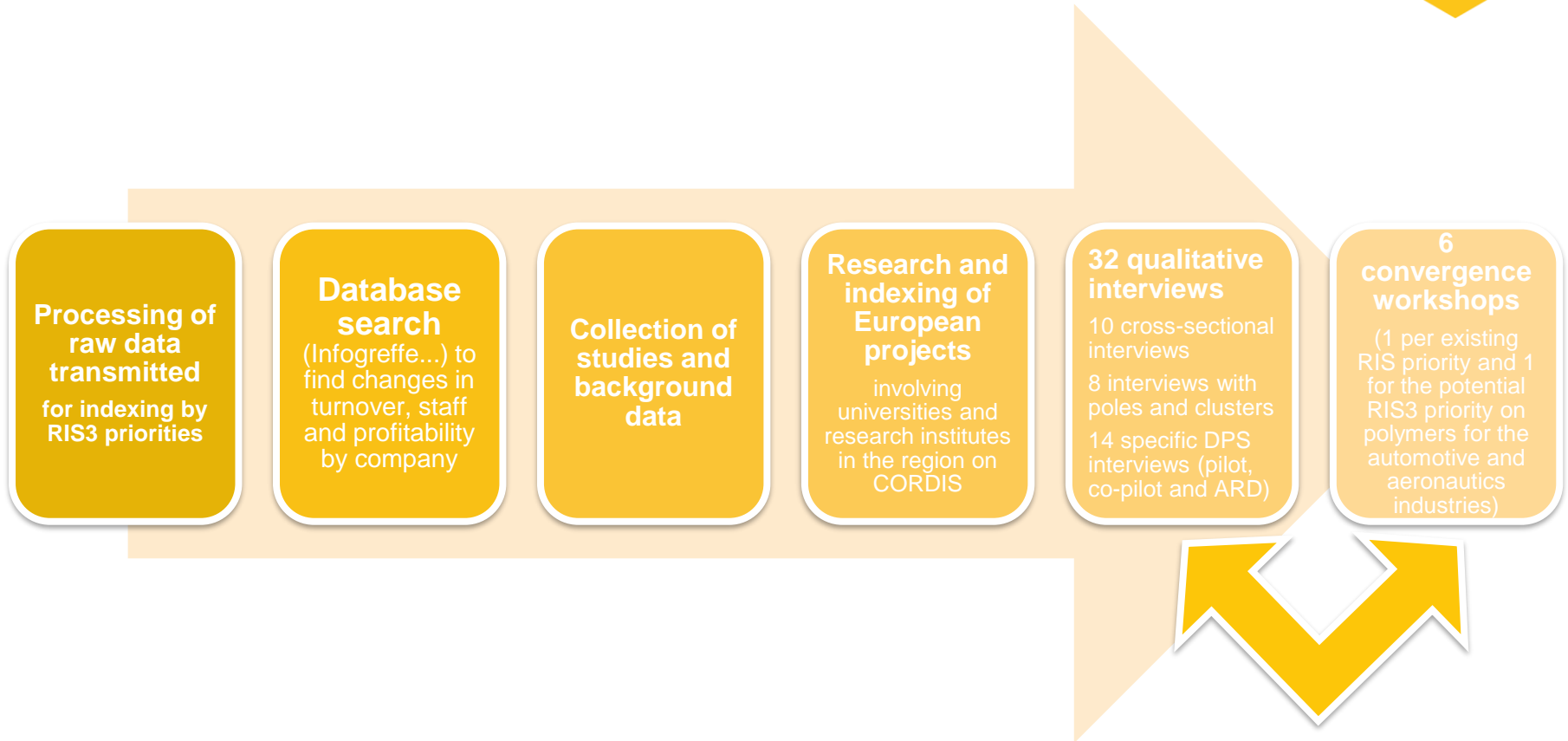
Benchmarking within Interreg Europe projects (especially Beyond EDP)



# 3. How to Evaluate RIS3



# 3. Example of Evaluation Tools



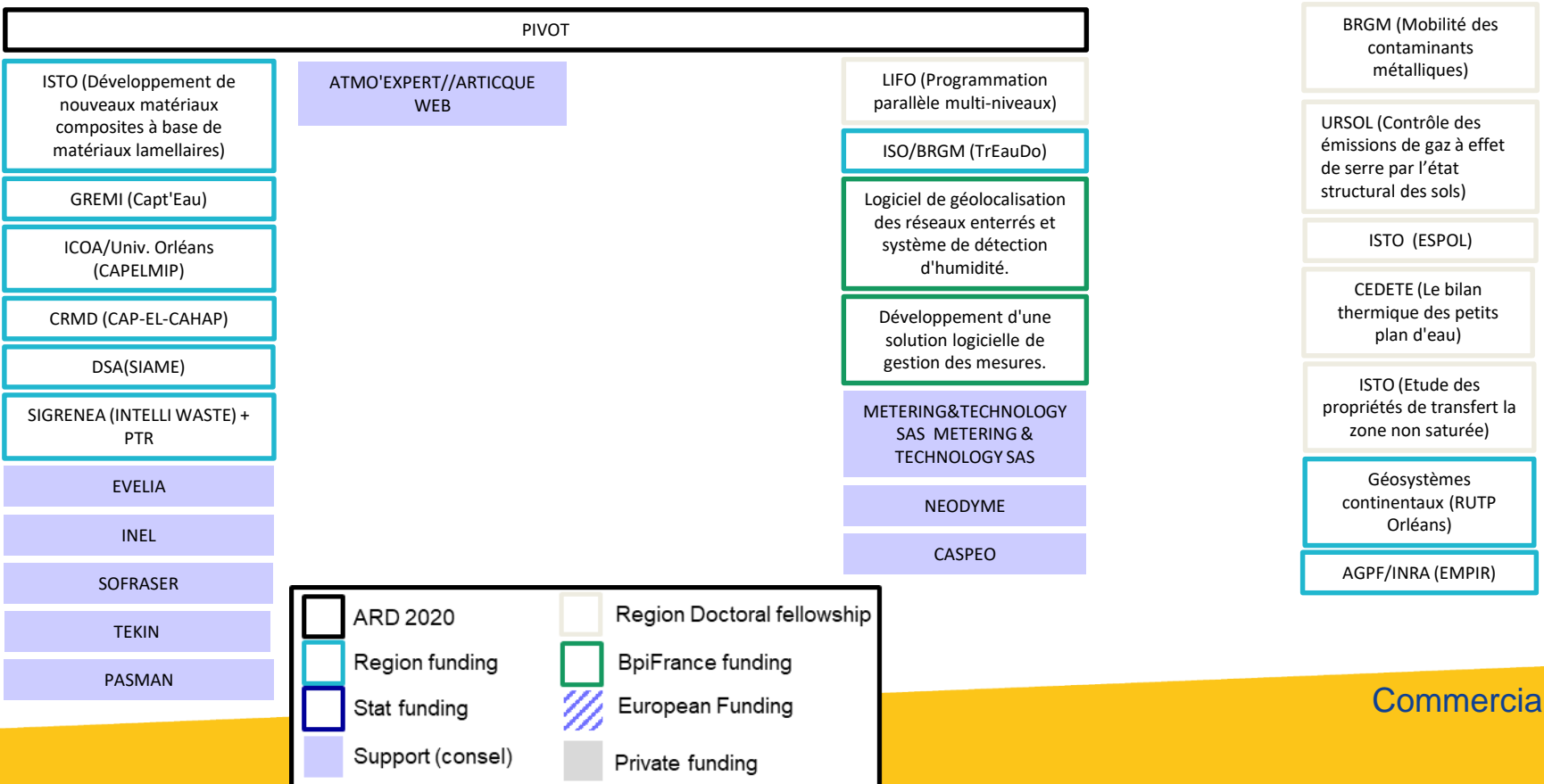
**EDP**

# 3. Example of Evaluation Tools



**EXAMPLE**

## Environmental metrology value chain

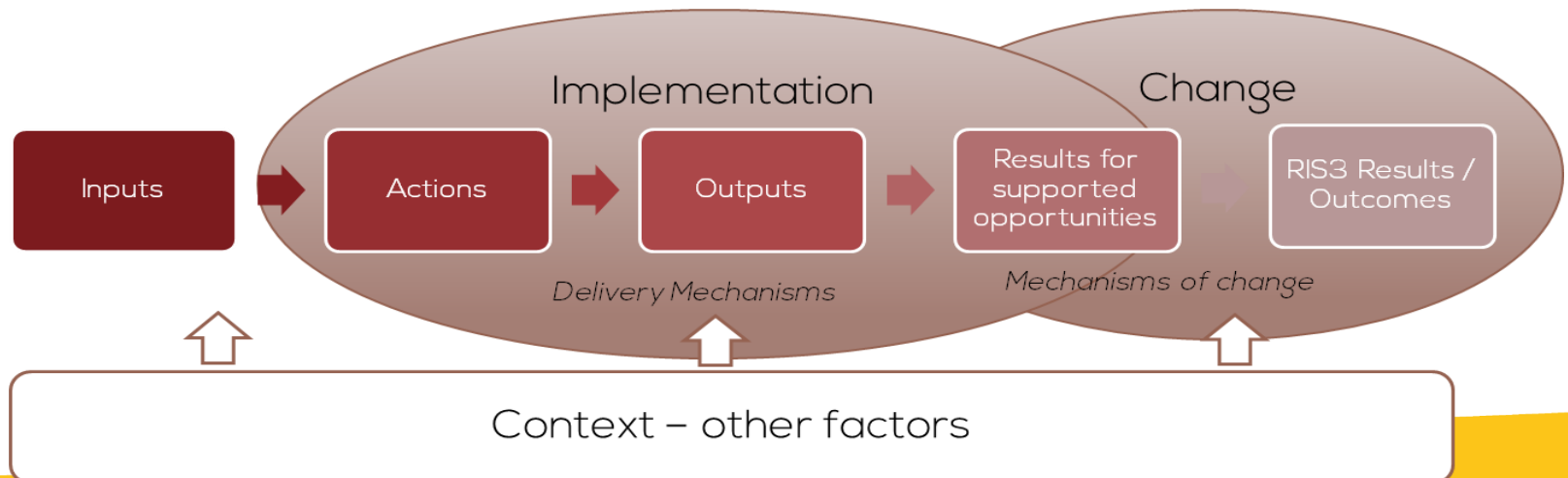


Research

Commercialization

	ARD 2020		Region Doctoral fellowship
	Region funding		BpiFrance funding
	Stat funding		European Funding
	Support (conseil)		Private funding

# 3. RIS3 Evaluation Strategy





# Recommendations

1. Granularity of the RIS3 priorities must be relevant
2. Select at the beginning a panel of companies to follow
3. Focus on the transformative potential of the projects and especially on industrial challenges
4. Design a steering team for each RIS3 priority with a full legitimacy given by the main governance (including MA)
5. Connect evaluation strategy with your change management strategy.



# Interreg Europe projects and link with RIS3

5 Interreg Europe Projects are linked with RIS3 in Centre Val de Loire for different issues :



**Research  
and innovation**

- EDP,
- services to SMEs
- Responsible innovation
- Higher Education
- Innovation in rural areas