

NATURE BASED URBAN TRANSFORMATION FOR SUSTAINABLE AND SOCIALLY INCLUSIVE CITIES

Martin Krekeler
Free and Hanseatic City of Hamburg
Senate Chancellery/Department of European Affairs
Project Coordinator CLEVER Cities

www.mediaserver.hamburg.de / Maxim Schulz



CLEVER CITIES (2018-2023)

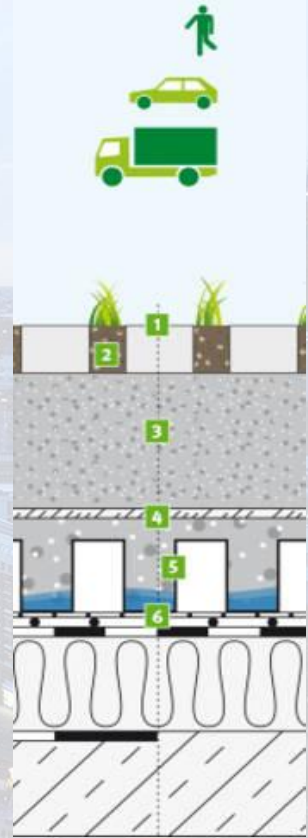
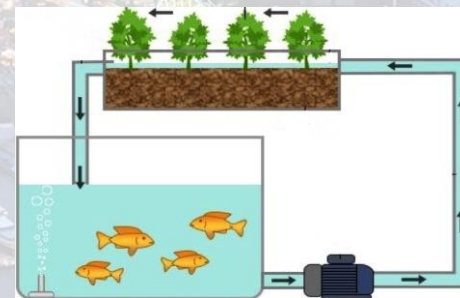
Co-designing Locally tailored Ecological solutions for Value added, socially inclusive Regeneration in cities

www.mediaserver.hamburg.de / Michael Zapf

- Fostering NBS for societal challenges
- Solutions should be tailored to local conditions
- Involving as many stakeholders as possible / necessary
- Fostering (and combining) technological and societal innovations
- Proving the effect of NBS to political decision makers
- Upscale and replicate the result







www.mediaserver.hamburg.de / Michael Zapf

Hamburg seizes the opportunities
nature-based solutions offers to cope
with societal challenges and improve
the **city's quality of life**

- ✓ Climate resilience
- ✓ Social inclusion
- ✓ Health and well-being
- ✓ Biodiversity
- ✓ Citizen safety



Hamburg is developing into a laboratory of digital modernity



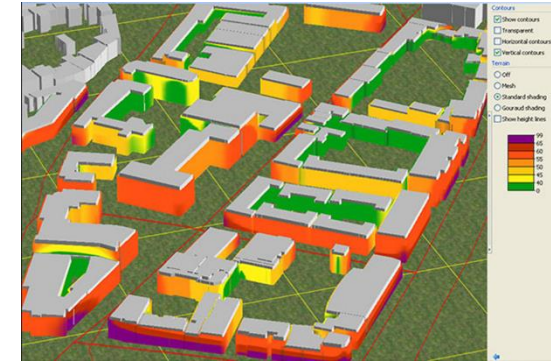
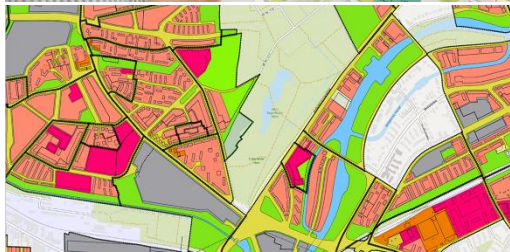
www.mediaserver.hamburg.de / Joerg Modrow





MODEL: FINDING PLACES

DIGITALISATION: INNOVATION AND SOCIAL PRACTIQUES



Quellen: BUE/BSW

INNOVATION AND SOCIAL PRACTIQUES: SIDE EFFECTS?



INNOVATION AND SOCIAL PRACTIQUES: INTELLIGENT USE OF SMART DEVICES TO BE CLEVER?



Key messages



- “Nature-based solution” is a difficult term and needs to be adapted
- Participatory approaches remain demanding, time and resource intensive – but it’s worth trying.
- NBS-related innovation needs test beds – but carefully embedded in co-design approaches and driven by societal challenges and needs
- Research social practices that come with a technical innovation
- City as a platform that is accessible to citizens, administrative and private actors and advises political decision makers – urban data hub
- Data interpretation: measure what you treasure, not treasure what you measure (Ch. Landry)
- Aim: a citizen-centred approach

Key messages



- Are we able to maintain and upscale our approach?
- Monitoring and assessing our impact – do we have a lab situation?
- Who is defining the Living Lab? Legitimacy?
- How “Co-” can you go?
- We need systemic changes for urban transformation – how do we achieve that in a given (and slowly changing) regulatory framework?

THANK YOU FOR YOUR ATTENTION!

Martin Krekeler
Senate Chancellery | Department of European Policy

Hermannstraße 15
20095 Hamburg
Martin.krekeler@sk.hamburg.de