



BID-REX

Interreg Europe



European Union
European Regional
Development Fund

Use of Biodiversity data in decision making: **the SITxell project,** a Good Practice from BID-REX

Núria Pou Àlvarez

Forest Sciences Centre of Catalonia (CTFC)

nuria.pou@ctfc.cat

22nd November 2018 | Bucharest (Romania)

INITIAL CONTEXT

BID-REX aims to enhance natural value preservation through improved regional development policies by **creating/reinforcing the link between relevant biodiversity data and decision-making processes**



SITxell is a free territorial analysis system

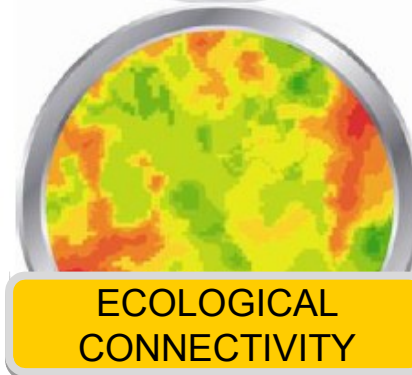
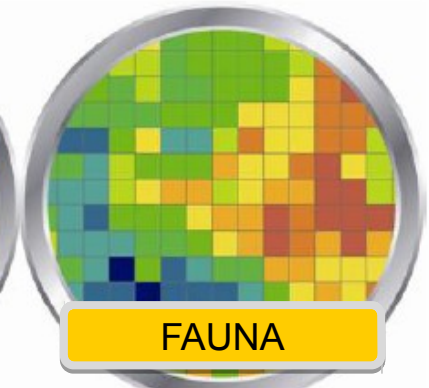
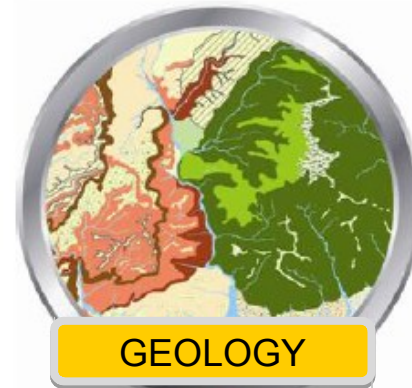
→ <http://www.sitxell.eu/en/>

THE SITXELL PROJECT

THE SITXELL PROJECT

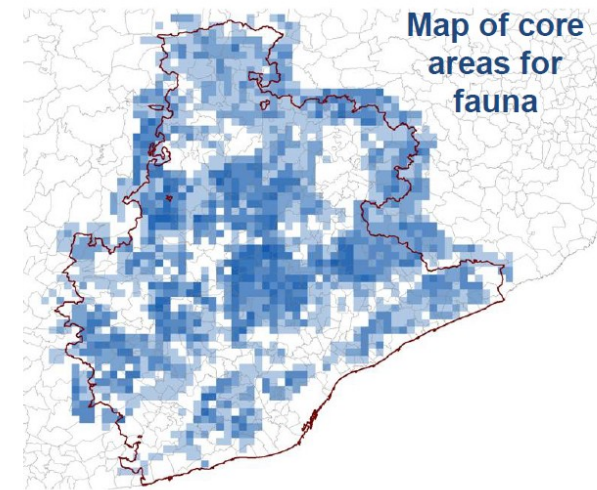
Geographical Information System (GIS) scheme (1:50.000) aimed at studying and evaluating non-urban land, taking into account the different approaches and values, in order to apply in a cross-cutting way in territorial policies

WHAT CAN BE
FOUND?



THE SITXELL PROJECT – Main principles

- Cartography of ecological and socioeconomic values of ALL the open areas in the province of Barcelona



- Coordinated work with other public administrations (different scales and departments) and private partners



- Great dissemination of the information to be used at different approaches on land planning

First Prize in the United Nations Public Sector Awards (UNPSA 2012)



Finalist in the European Public Sector Awards (EPSA 2011)



The SITxell project promotes the use of the information related to territorial analysis for the socioeconomic development compatible with the preservation of ecosystem services:

- Land analysis and planning at municipal level in more than 100 municipalities
- Protected areas: new special plan for the Parc Natural del Montseny
- Regional Planning: Metropolitan Region of Barcelona (3,2 M of inhabitants)
- Ecosystem Services
- Implementation of green infrastructure at local and regional scales.

- In the past...
 - lack of basic information
 - and the existence of many different administrations involved on decision making.

The combination of scientific information and approach combined with a strong political support are key for the success of the project.

- In future...
 - need of long-term resources (50.000€/year) to maintain and improve the tool

THE SITXELL PROJECT

Further information at
www.sitxell.eu

SITxell is a project developed by the



**Diputació
Barcelona**

Àrea de Territori i Sostenibilitat



BID-REX

Interreg Europe



European Union
European Regional
Development Fund

Thank you!

Questions welcome



www.interreg.eu/bid-rex