

NATURAL HERITAGE AS DRIVER OF ECONOMIC DEVELOPMENT

(an offensive approach)

“the Mecca of the economist lies in biology...”

Alfred Marshall

Principles of Economics. Vol. 1. London: Macmillan, 1890

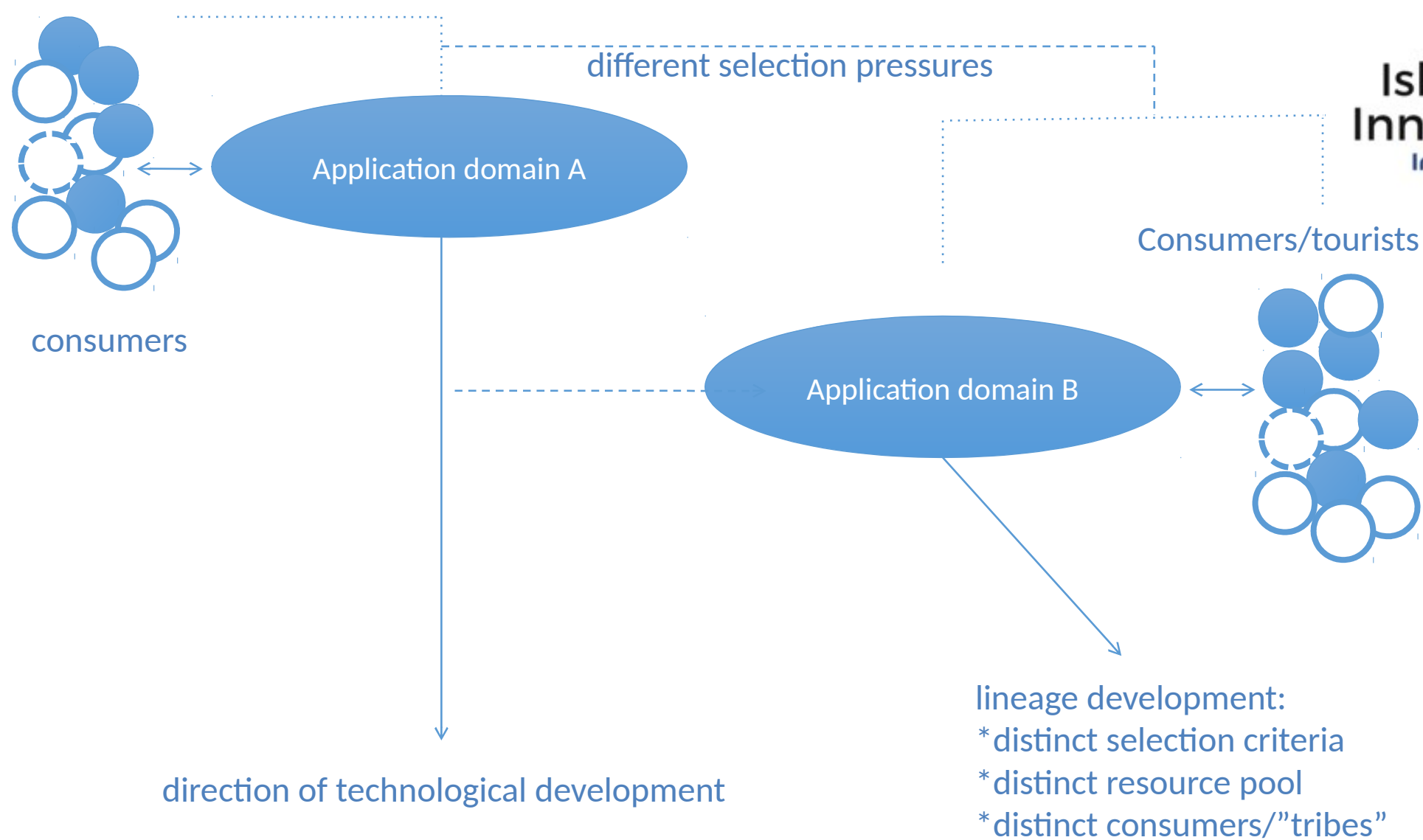


Figure..., Speciation in technological development (vrij naar: Levinthal, 1998)

Context

Good practice (Lab Vlieland)

- advantages/innovativeness
- limitations
- impact and succesfactors

Azoren



Fryslân



Guadeloupe



Kuressaare



Lesvos



Madeira

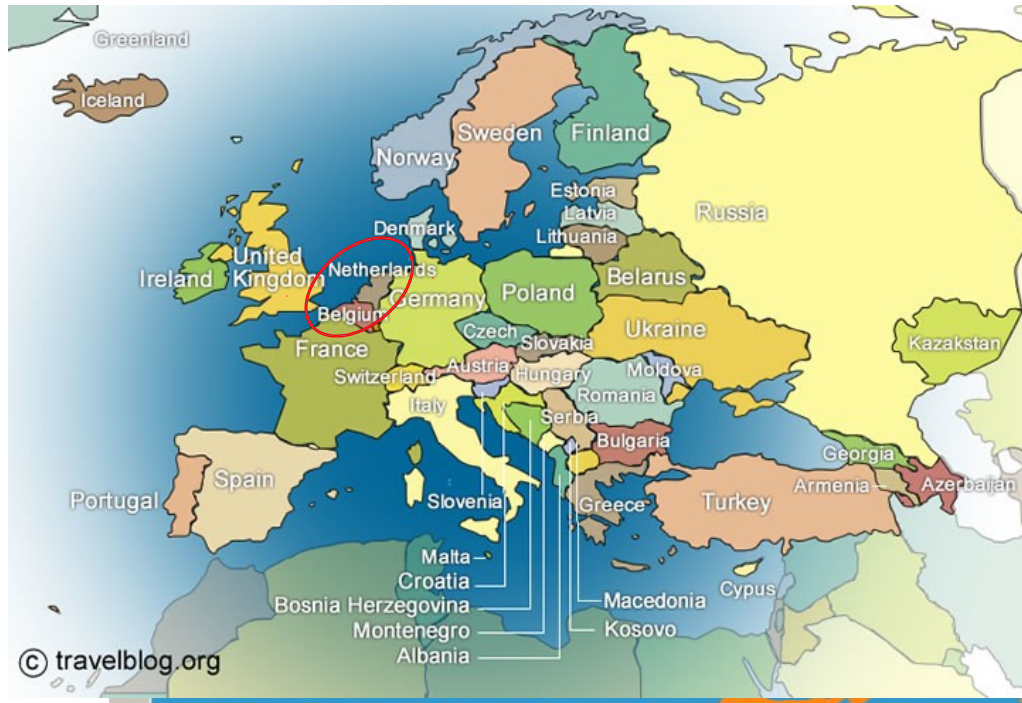


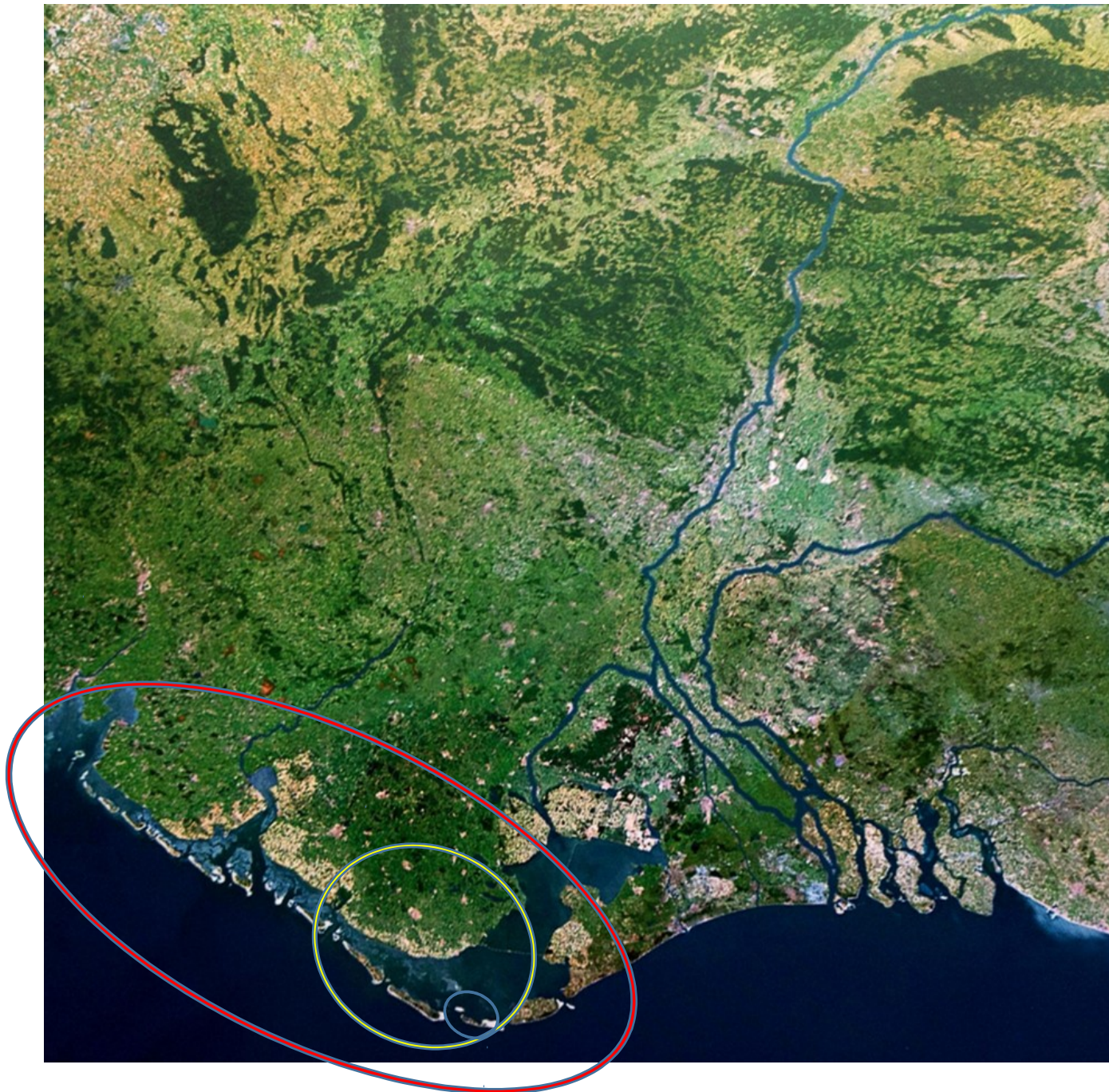
Samsø



Islands of Innovation







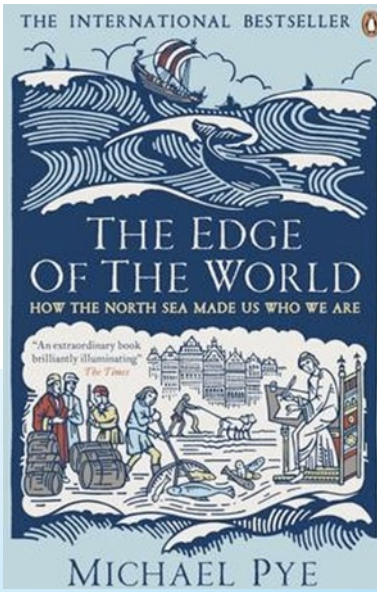
Delta Lady
Interreg Europe

Islands of Innovation
Interreg Europe

Wadden Sea

The Wadden Sea is the largest unbroken system of intertidal sand and mud flats in the world. The site covers the Dutch Wadden Sea Conservation Area, the German Wadden Sea National Parks of Lower Saxony and Schleswig-Holstein, and most of the Danish Wadden Sea maritime conservation area. It is a large, temperate, relatively flat coastal wetland environment, formed by the intricate interactions between physical and biological factors that have given rise to a multitude of transitional habitats with tidal channels, sandy shoals, sea-grass meadows, mussel beds, sandbars, mudflats, salt marshes, estuaries, beaches and dunes. The area is home to numerous plant and animal species, including marine mammals such as the harbour seal, grey seal and harbour porpoise. Wadden Sea is one of the last remaining large-scale, intertidal ecosystems where natural processes continue to function largely undisturbed.





Centralised inward-looking innovation

Closed Innovation



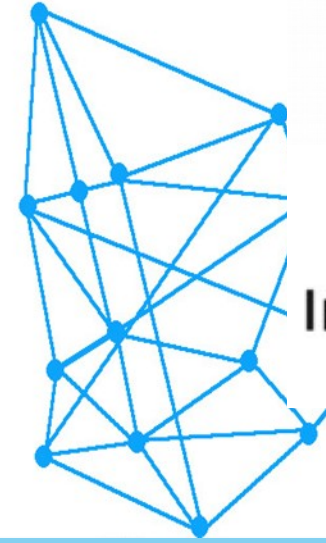
Externally focused, collaborative innovation

Open Innovation



Ecosystem centric, cross-organisational innovation

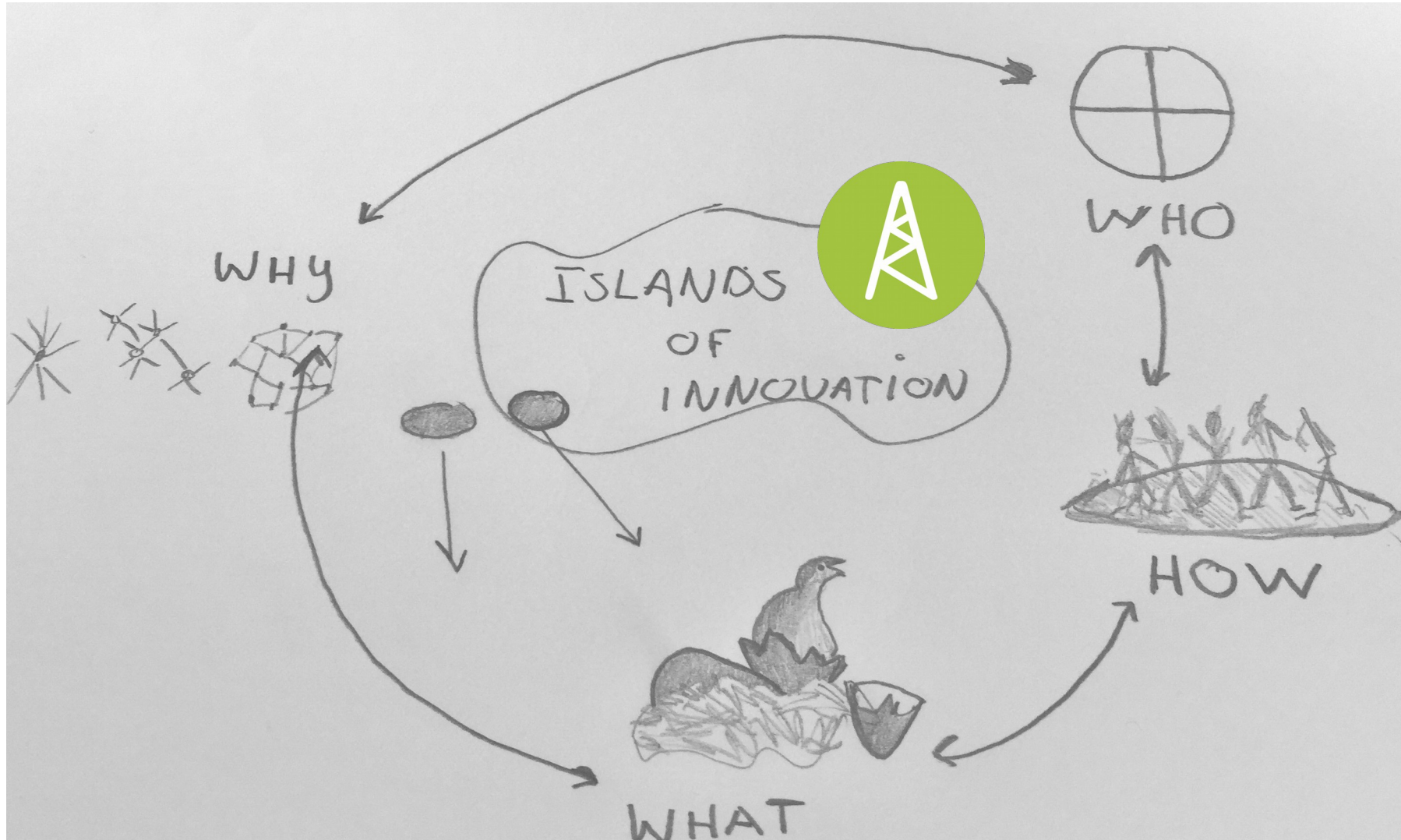
Innovation Networks



Delta Lady
Interreg Europe

Islands of Innovation
Interreg Europe





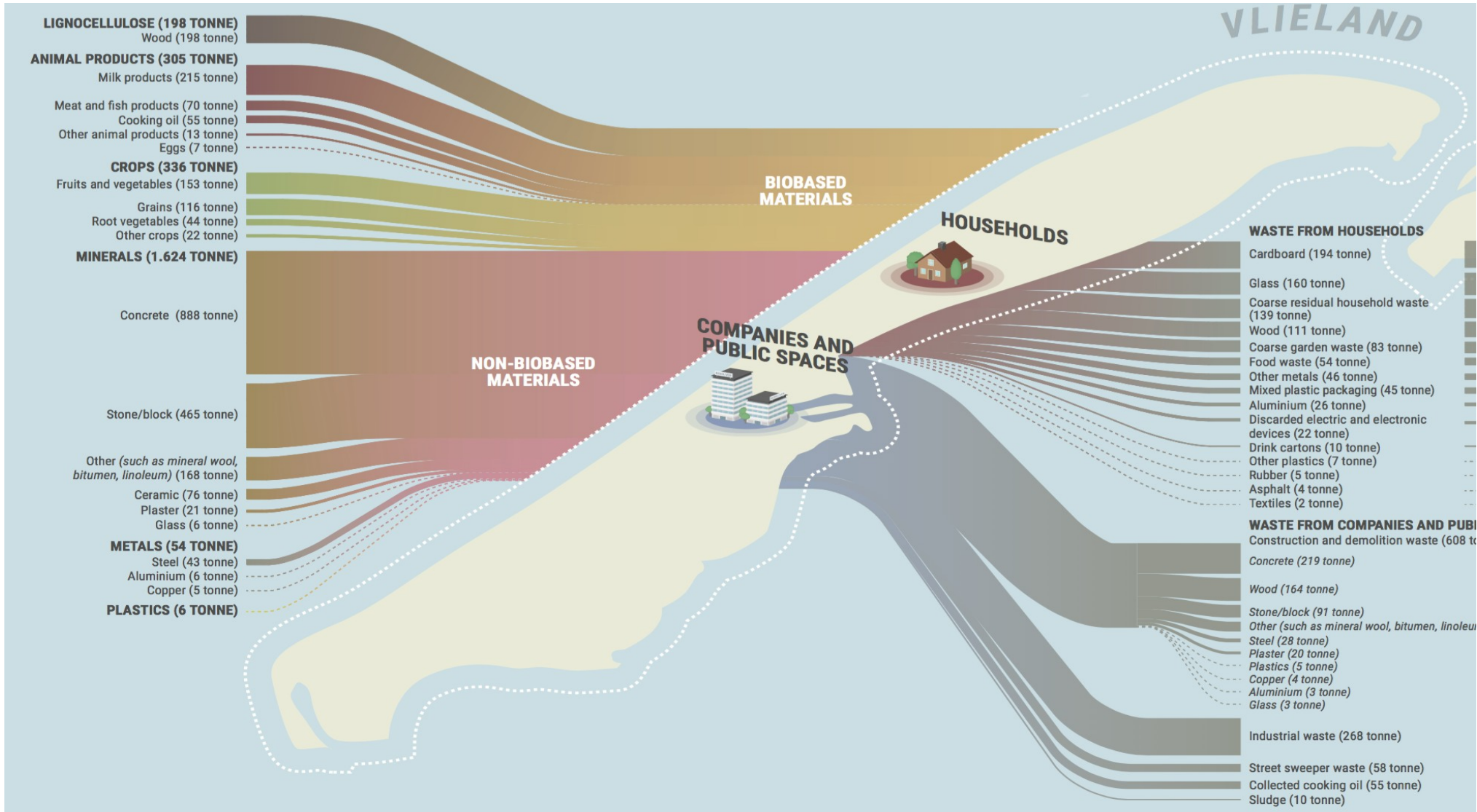
Advantages/innovativeness
Integral and increase
optionality (policy making)
Addresses:
Content (diy/circular)
Process (quadruple helix)
Governance (role in
innovation processes)

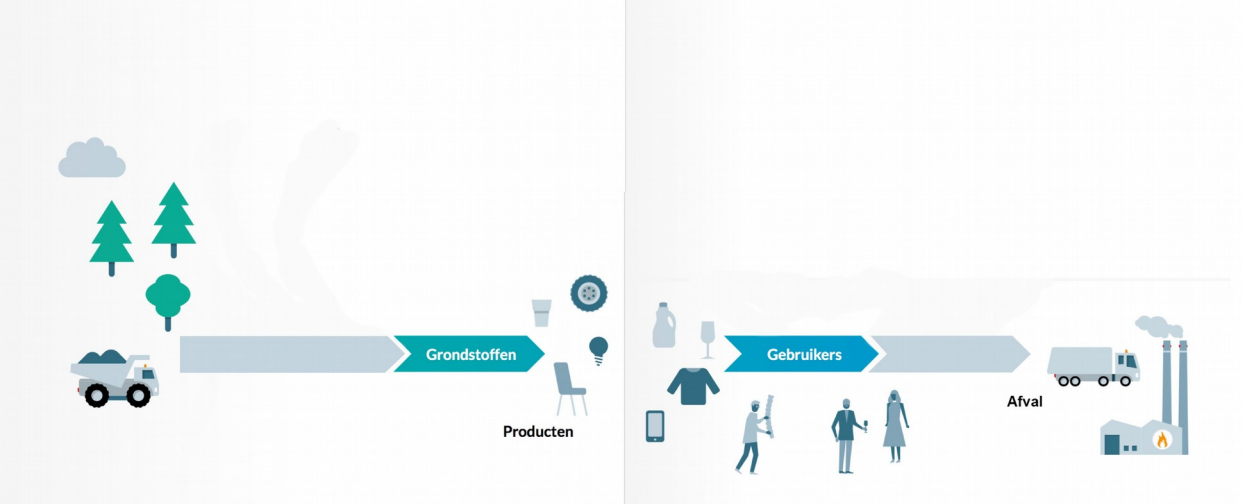
Best practice

LAB VLIELAND



LAB VLIELAND

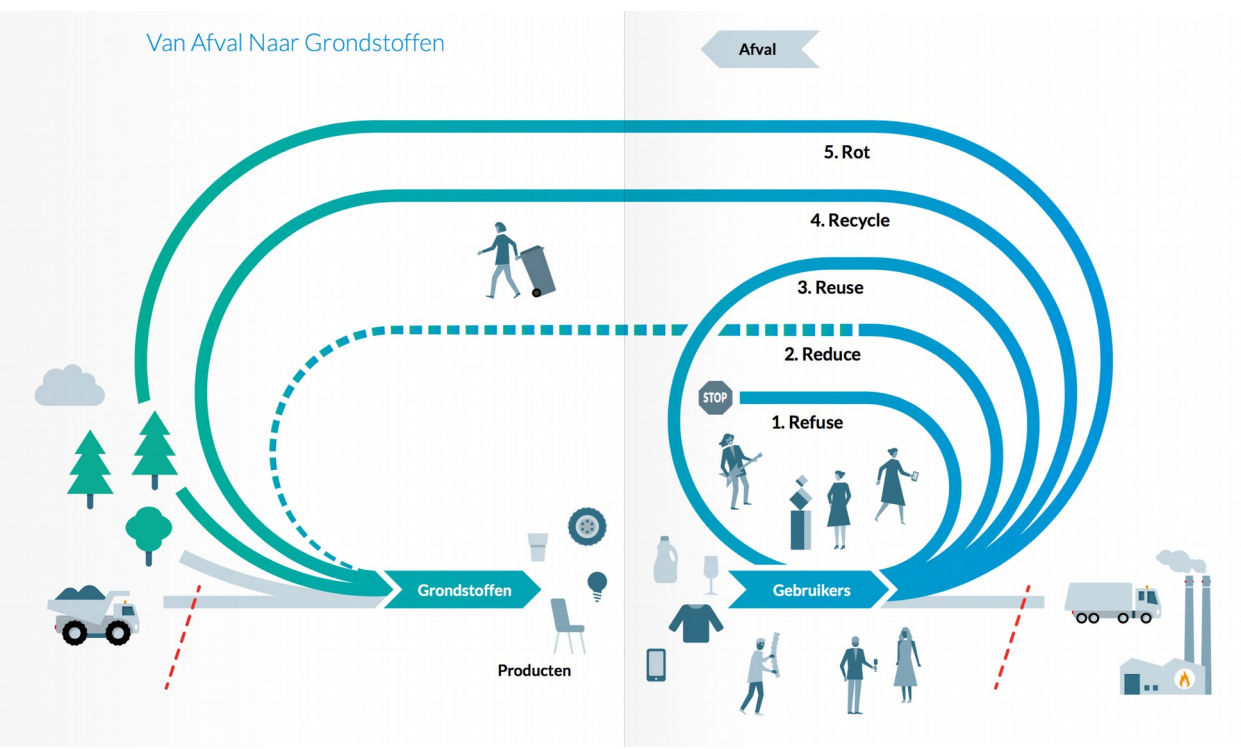


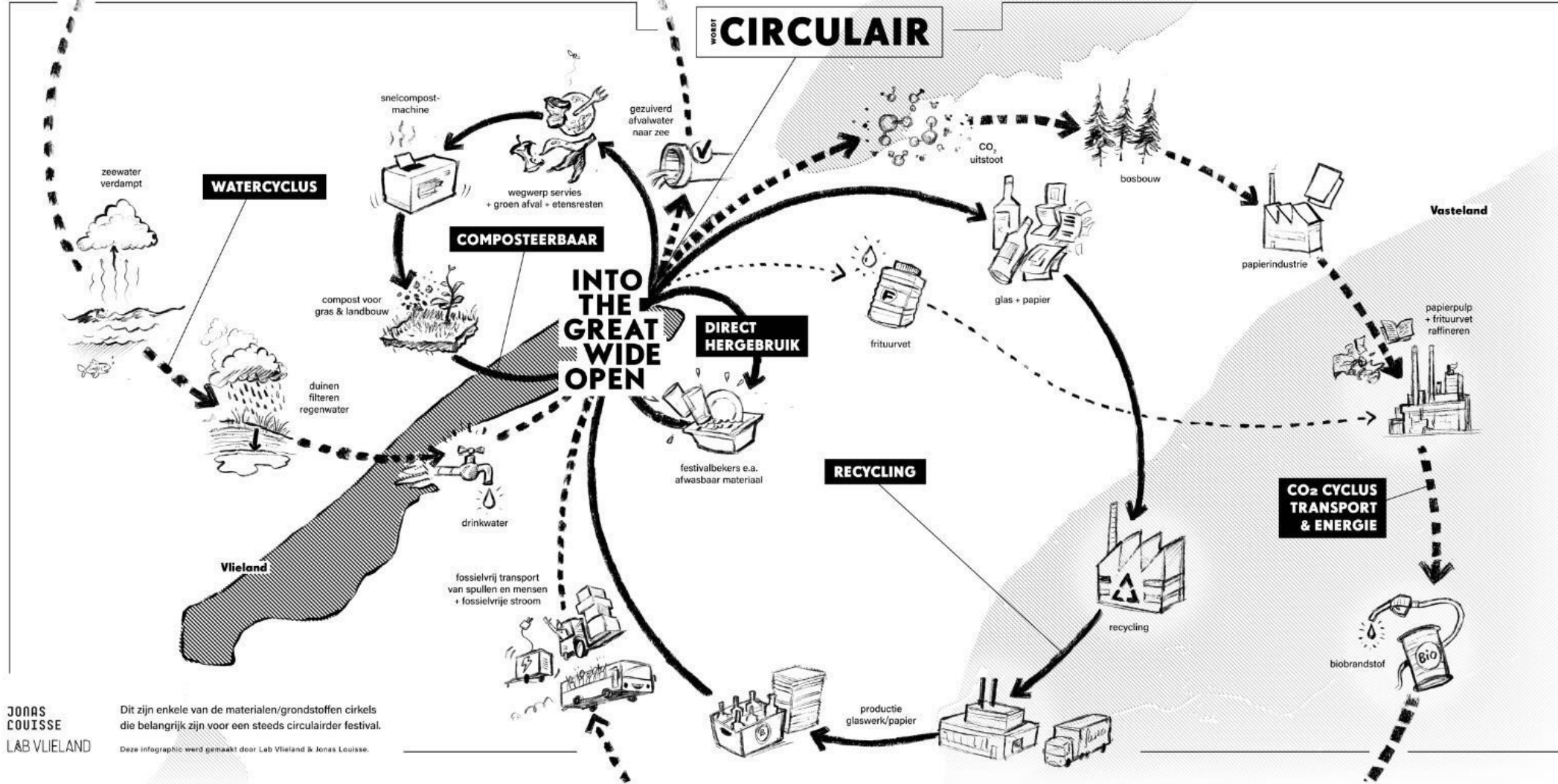


Lineair



Circular





JONAS
COUISSE
LAB VLIELAND

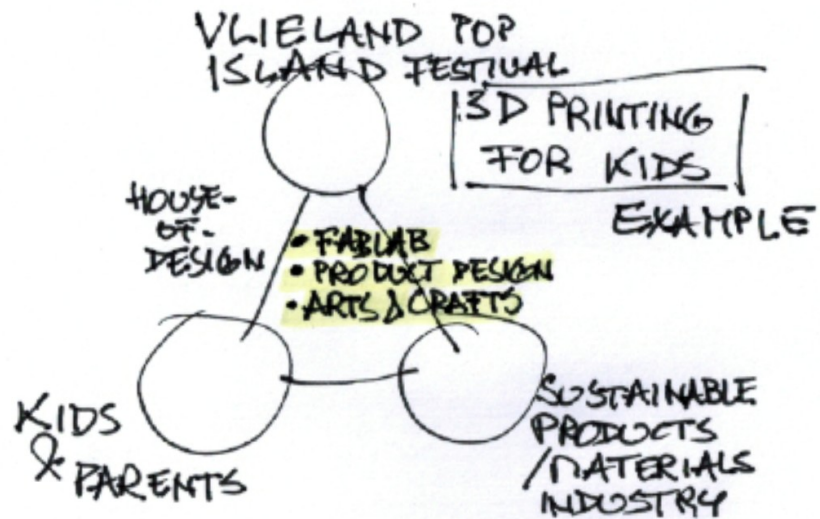
Dit zijn enkele van de materialen/grondstoffen cirkels die belangrijk zijn voor een steeds circulaire festival.
Deze infographic werd gemaakt door Lab Vlieland & Jonas Louisse.



Ecocreation
organic waste reduction



Islands of
Innovation
Interreg Europe



Lab Vlieland Prikkabel
Een groener en sociaal festival met het priklicht van de Werkplaats

Kartent
De KarTent is het nieuwste op het gebied van festival-kamperen. Gemaakt van alleen karton ...

Solar cinema
Solar Cinema is Nederlands eerste en enige mobiele bioscoop op zonne-energie.

Greenbattery (mini)
De GreenBattery mini is een alternatief om kleine stroompunten van écht groene energie te ...



Windmolen, zonnecollectoren en diverse accu-sets
Instant-stroomoplossingen op een duurzame en innovatieve wijze

The Mobile Solar Power Trailer
De Mobile Solar Power Trailer is een aanhangwagen met een telescopische mast waarop ...

Hermit Houses
The Hermit Houses zijn een typologie van eenvoudig op te bouwen-up design retraites, die ...

Kraanwater graag
Kraanwater graag verzoekt de Nederlandse festivals, evenementen en horeca om kraanwater ...

Afvaleilanden
Afvaleilanden met 2, 3 of 6 240 liter

Héman Meqa Event Cooler

Sanitrax
The world's first and only patent

Flexotels
Flexotels is een innovatief concept

Limitations:

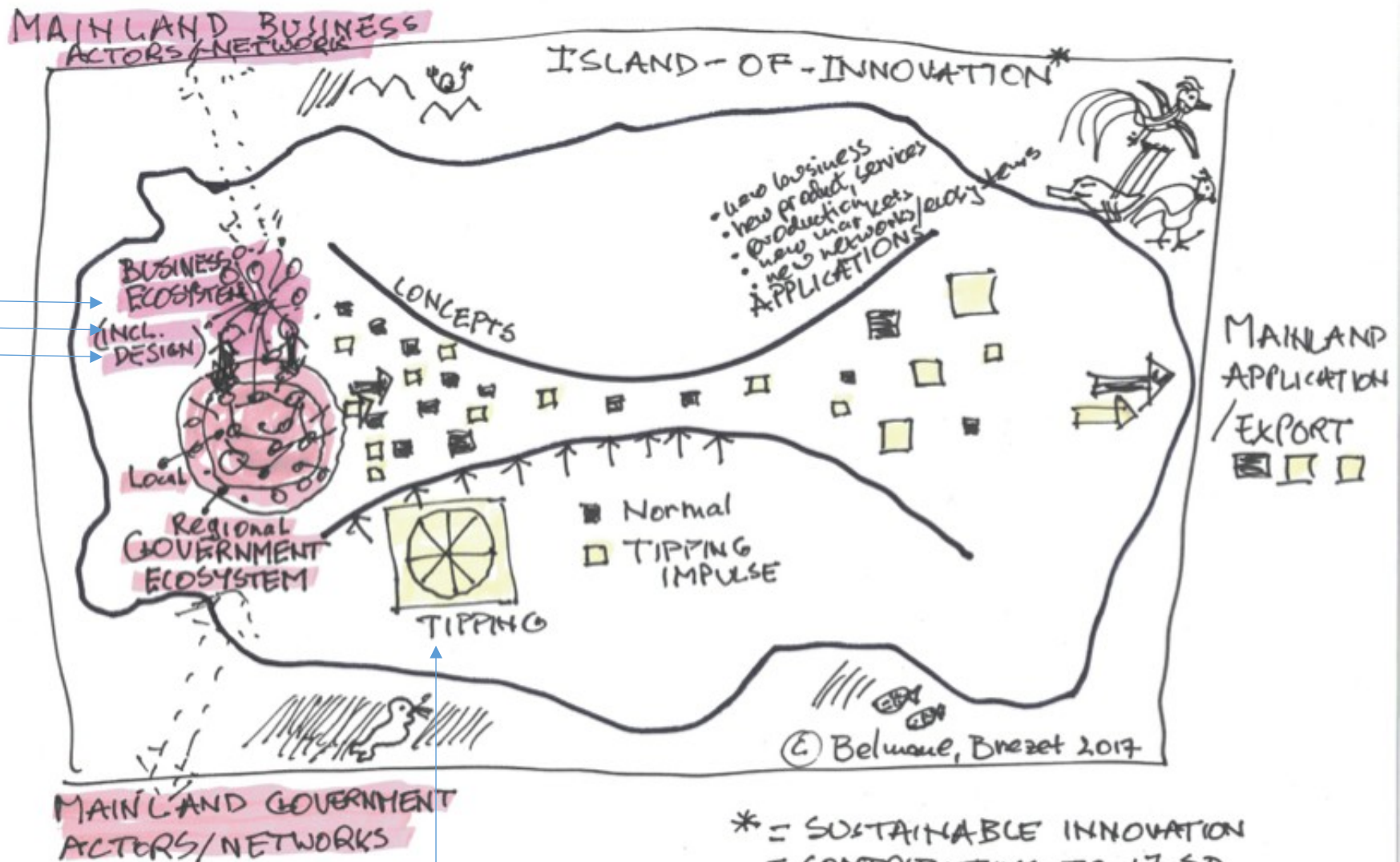
Jumping from project to project/not embedded in program
One swallow does not make summer
Translation to adjust to the policy making process

Impact and success factors:

More best practices/ a lot of experiments
Different role(s) government is needed
Mission based approach/multilevel governance/“leverage mechanism”
Backcasting



input



Outcome

* = SUSTAINABLE INNOVATION
= CONTRIBUTING TO 17 SD
ON GOALS (MORE OR LESS)

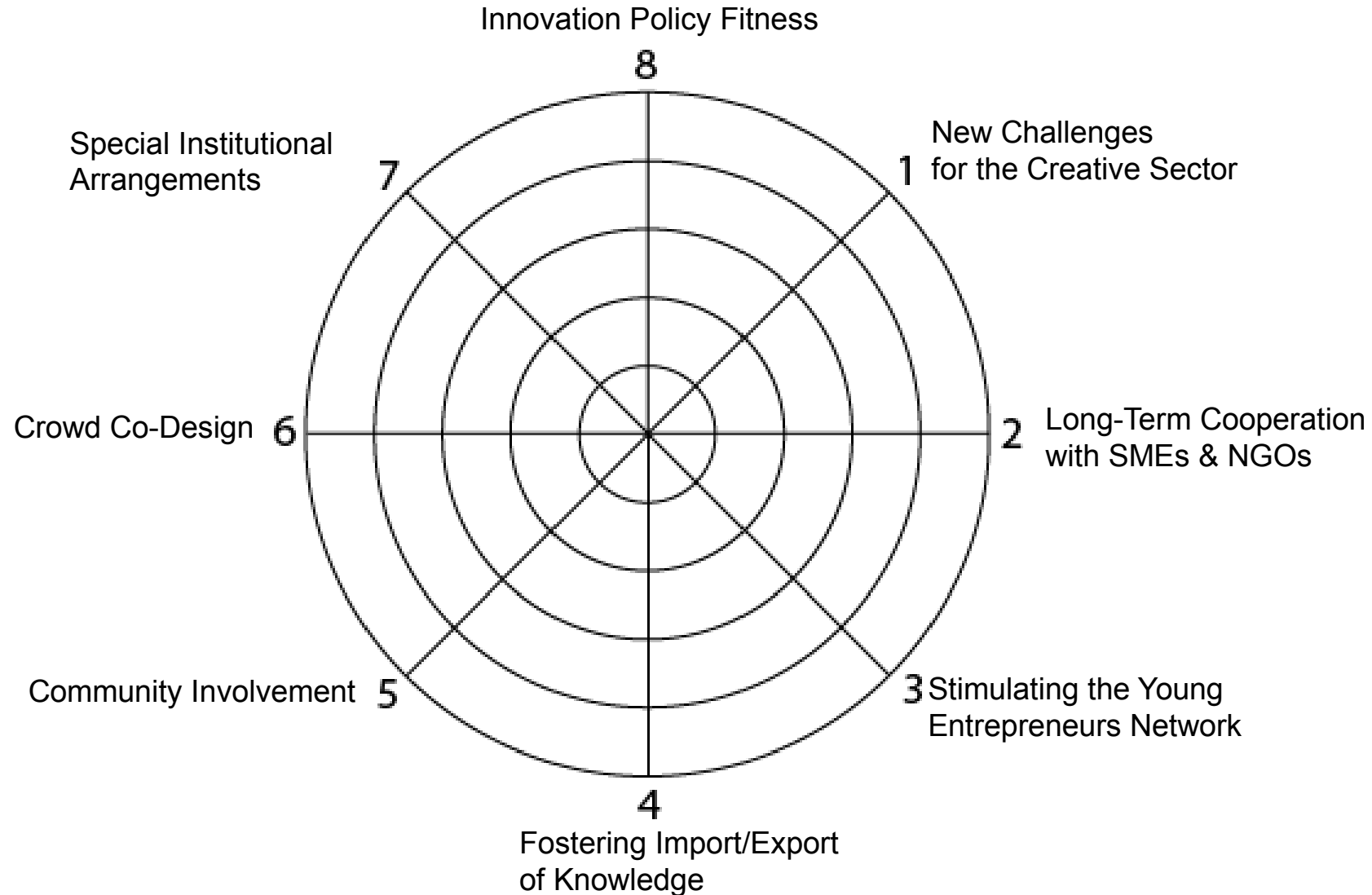
TIPPING Wheel

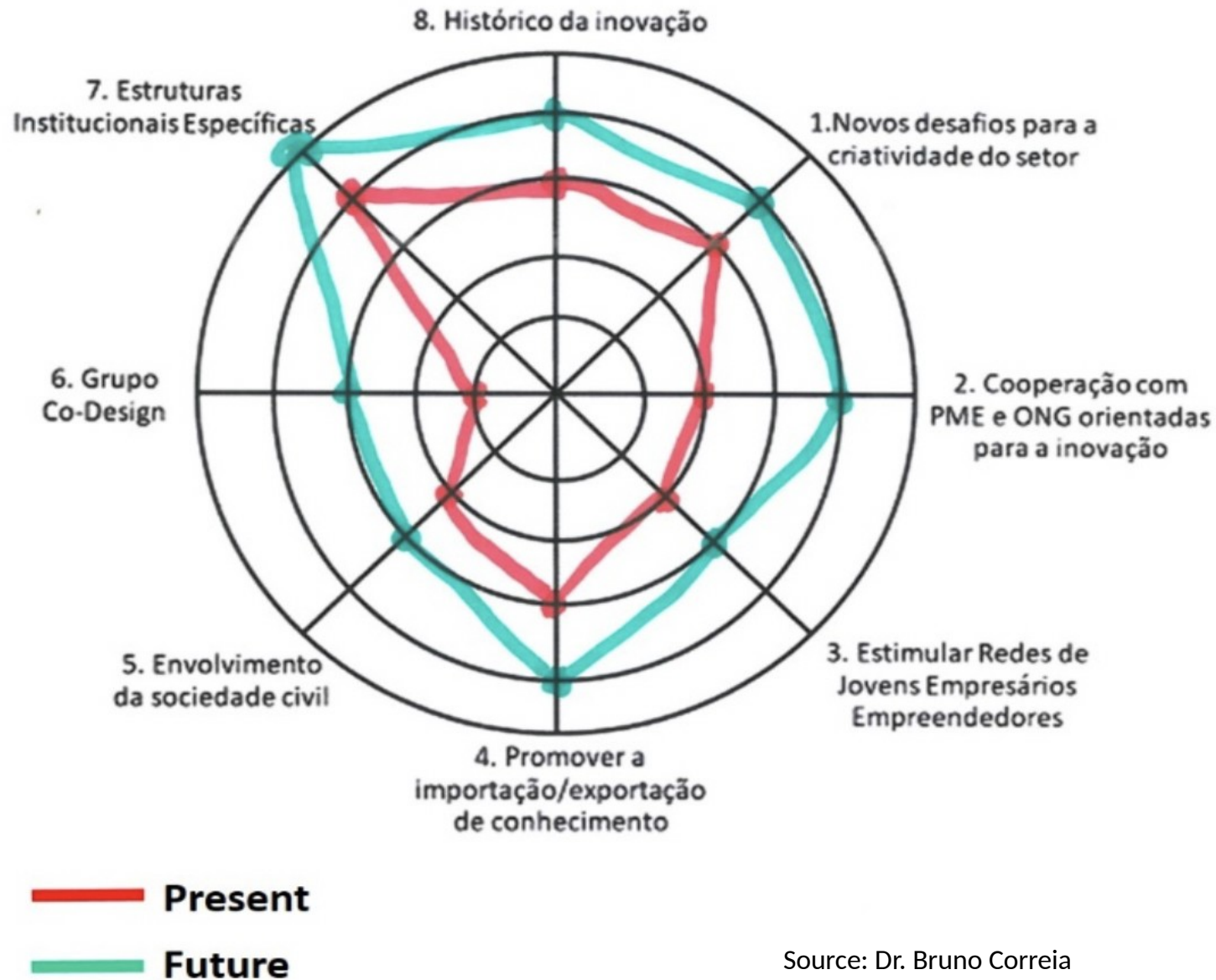
On base innovation theory
& good practices



{= innovation guide)

Challenge:





Source: Dr. Bruno Correia

Islands-of-Innovation Model

