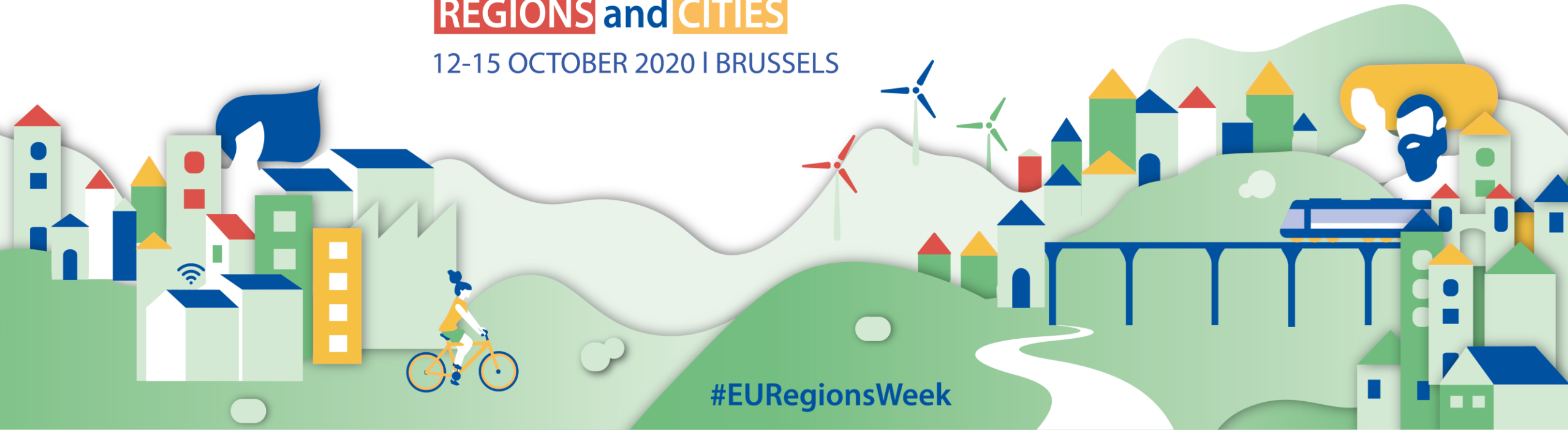


18th EUROPEAN WEEK of REGIONS and CITIES

12-15 OCTOBER 2020 | BRUSSELS



#EURegionsWeek



European Committee
of the Regions



Interreg
Europe

European Union | European Regional Development Fund



European
Commission

18th EUROPEAN WEEK of
REGIONS and CITIES

12-15 OCTOBER 2020 | BRUSSELS

Good practice, Vakin (SE)

Returbutiken reuse shop & textile service

Successful reuse based on a social enterprise connected to recycling centres



European Committee
of the Regions



Interreg
Europe

European Union | European Regional Development Fund



Main framework conditions

Good practice:
Vakin's recycling centres and the labour market programme run by Umeå municipality



Labour market programme

Municipality of Umeå
labour market programme



Returbutiken

Textile service

IT-service

Coaching

Gardening

Cleaning

Car care

Metal and cycle workshop

Dismantling and recycling

Document scanning

Practical work training

Delivery

Carpentry



Reuse and labour market programmes

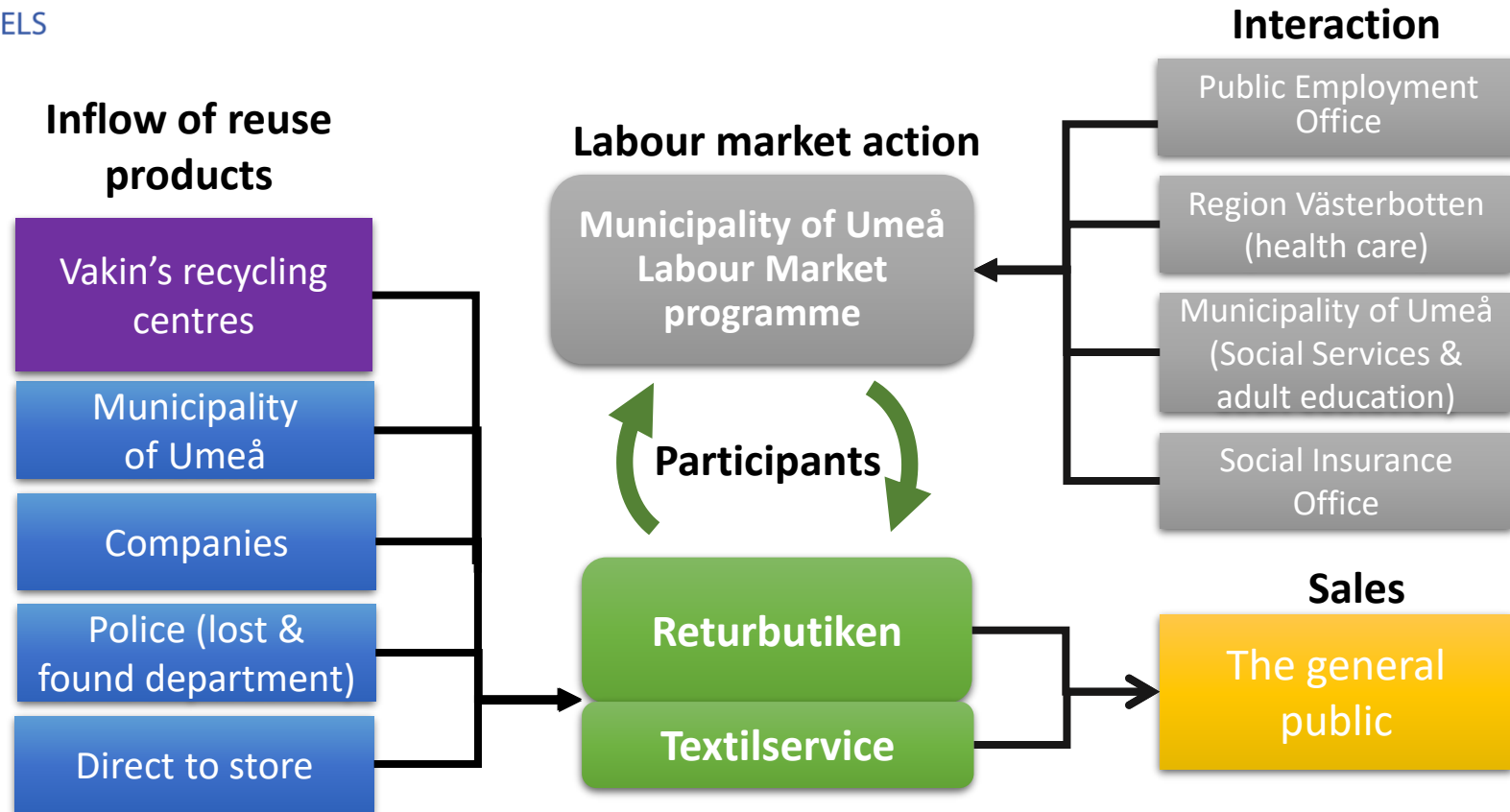
- Returbutiken (reuse shop) and Textilservice (textile service) are part of a labour market programme run by Umeå municipality.
- It provides work placement for people who are outside the regular labour market.
- 10 employees and 60 placements, 80-90 participants per year

Returbutiken

Textilservice



Holistic system reuse/labour market



Measures of success

Environmental value

- 300 000 kg reused products collected
- 11 500 kg IT equipment collected

Social value

- 10 employees and 60 placements
- 80-90 participants per year

Economic value

- 1500-2000 items sold per day
- Sales income: 0.6 € million (2019)
- Running costs 2.7 € million (2019)



Take home message

- Requires a tight cooperation between institutions, labour market programme and the provider of products
- Reuse provides a suitable platform for labour market programmes
- Labour market programmes provide economic stability for reuse business models
- Good practice shows a large potential for growth in the reuse sector (both social enterprises and commercial)

