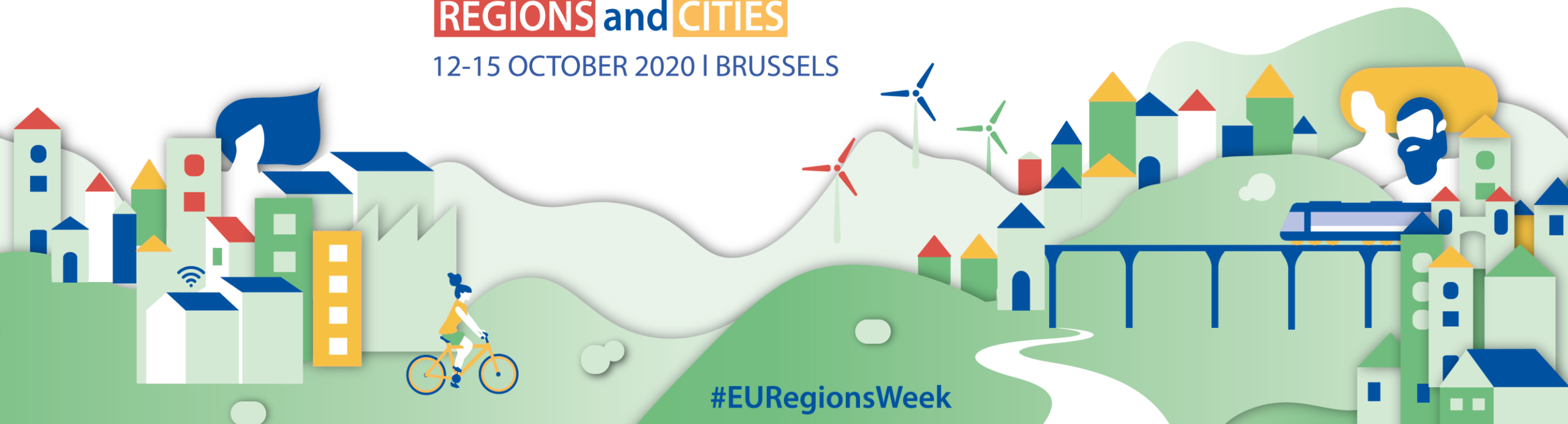




18th EUROPEAN WEEK of REGIONS and CITIES

12-15 OCTOBER 2020 | BRUSSELS



#EURegionsWeek

NETWORK REUSE CENTER SLOVENIA

MARINKA VOVK



European Committee
of the Regions



European Union | European Regional Development Fund



18th EUROPEAN WEEK of REGIONS and CITIES

12-15 OCTOBER 2020 | BRUSSELS

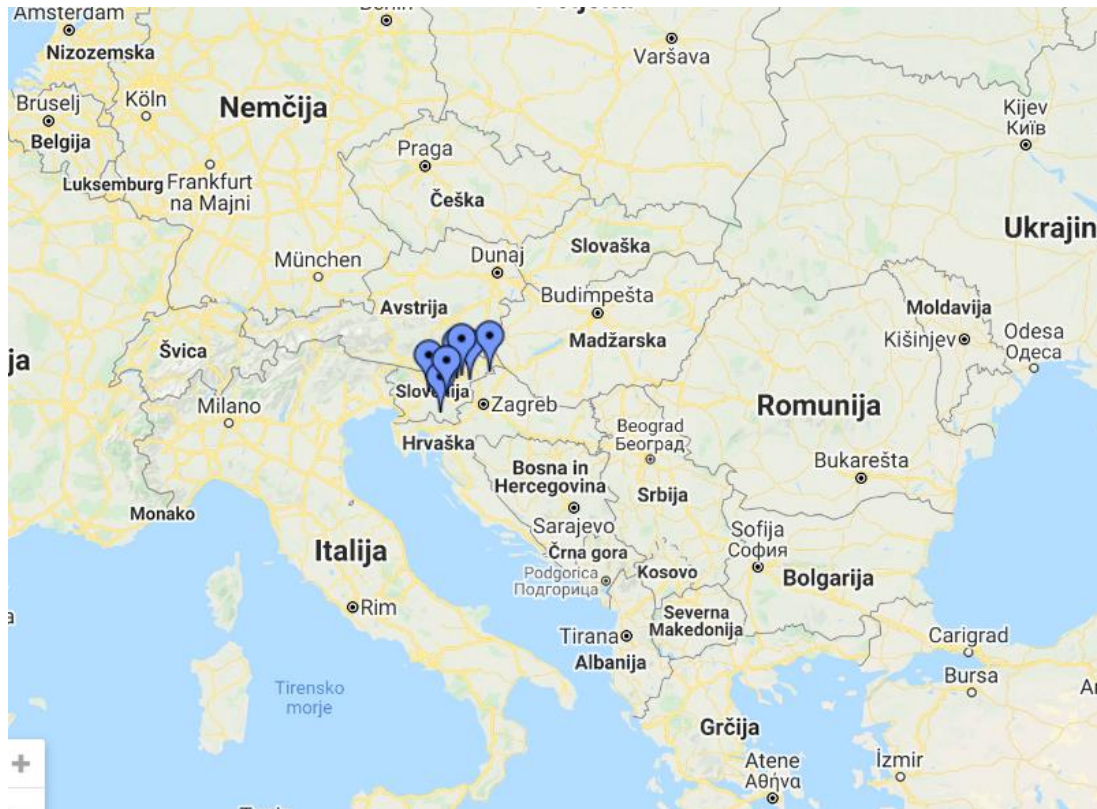
CPU D.O.O., SO.P., CENTER PONOVNE UPORABE Reuse center



We use only what already exists

Reuse
network CPU
6 locations

Other reuse
networks
12




2,097,195
POPULATION

73.1 %
Share of separately collected municipal waste

33 kg
Landfilled municipal waste per capita



European Committee
of the Regions



**Interreg
Europe**

European Union | European Regional Development Fund



18th EUROPEAN WEEK of

REGIONS and CITIES

12-15 OCTOBER 2020 | BRUSSELS

CPU D.O.O., SO.P., CENTER PONOVNE UPORABE Reuse center



We use only what already exists

CPU – REUSE center Slovenia Hybrid model: 50% of market + 50% of projects

The Reuse Center (CPU), established in 2011 → operates as a social enterprise in the reuse sector at 6 locations in Slovenia.

CPU promotes a sustainable development model →

full-time employees in CPU 15 + 30 in the social economy in this sector.

Reuse → in terms of waste management priority

Social activation → implementation of a program for the long-term difficult to employ (75 people) with positive outcomes 67% inclusion in the labor market)

- **Environmental protection:** waste prevention and sustainable waste management.
- **Social equality:** social activities such as the integration of the hard-to-employ into the labor market and access to goods.
- **Economic viability:** job creation and training opportunities.



European Committee
of the Regions



Interreg
Europe

European Union | European Regional Development Fund



18th EUROPEAN WEEK of REGIONS and CITIES

12-15 OCTOBER 2020 | BRUSSELS

1. Good practice

We use only what already exists



European Committee
of the Regions



UPCYCLING PRODUCTS – for understanding REUSE



Handbag / felt



Jewellery /waste electronics



European Union | European Regional Development Fund



Bike bag/tarpaulin



Backpack and mini handbags /tarpaulin



18th EUROPEAN WEEK of REGIONS and CITIES

12-15 OCTOBER 2020 | BRUSSELS

Good practice
*We use only what already
exists*



clothing upcycling



badge



Backpack – felt and tarpaulin



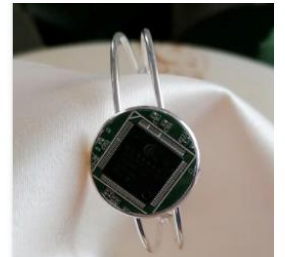
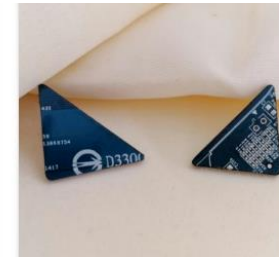
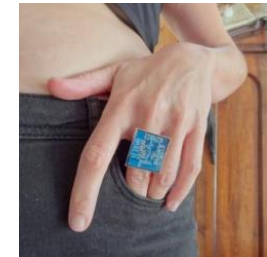
Textiles reuse - purses, cases



carrying bags of shops



We had the first - baby masks



electronic waste - art, responsibility



European Committee
of the Regions



Interreg
Europe

European Union | European Regional Development Fund



18th EUROPEAN WEEK of REGIONS and CITIES

12-15 OCTOBER 2020 | BRUSSELS

Good practice

*We use only what
already exists*



Involvement of civil society



reuse workshops



Repair Cafe



Trendy - reuse equipment...



European Committee
of the Regions



European Union | European Regional Development Fund



2. The main framework conditions necessary for starting your initiative

The main condition - co-financing

1. Public tenders / 2009-2010 + 2 participation of local communities

(Municipalities, Communal companies) - provision of space + goods/waste for reuse

- * Ministry of Labor, Family and Social Affairs: establishment of the first reuse center, employment of hard-to-employ people
- * Ministry of Economic Development and Technology (development of reuse activities and products)
- * Ministry of the Environment and Spatial Planning (environmental awareness of the importance of reuse)

Later:

projects - active employment policy (Employment office)
local projects (LAS) - development of new services



European Committee
of the Regions



European Union | European Regional Development Fund



18th EUROPEAN WEEK of REGIONS and CITIES

12-15 OCTOBER 2020 | BRUSSELS

3. Some fact and figures on the environmental (waste avoided, products repaired, etc.) and social impact (jobs created, vulnerable groups, etc.) of your activities

45 green jobs, especially unemployed women

Social benefits

Economic benefits

Environmental impact

Provision of goods to low income families

Impact on residents

Volunteering opportunities

Training opportunities

Community involvement

- 290 t products for reuse
- 300.000 visitors - customers
- 36 events for Repair Cafe
- 40 involved in social activation and training
- 60 trainings and workshops
- 200,000kg of CO₂ emissions saved

annually

- the creation of socially inclusive wealth;
- the regeneration of local neighbourhoods;
- the development of new ways to deliver public services;
- employment and training; and
- provision of basic items (bed, fridge, cooker) for the socially excluded.



European Committee
of the Regions



Interreg
Europe

European Union | European Regional Development Fund



**18th EUROPEAN WEEK of
REGIONS and CITIES**

12-15 OCTOBER 2020 | BRUSSELS

**4. Potential of transferring the good practice to a
different regional context**



✓ **yes**

In 5 locations: transferring the good practice CPU in SI

In 2 locations: transferring the good practice CPU --CRO



European Committee
of the Regions



**Interreg
Europe**

European Union | European Regional Development Fund



an
mission

5. Our recommendations and outlook to the future - for CPU:

Step up cooperation with the following stakeholders



LOCAL COMMUNITIES (MUNICIPALITIES, COMMUNAL ENTERPRISES): synergistic cooperation in ensuring re-use. Problem - collection centers / Reuse corners - ?? Providing reuse



MINISTRIES: cooperation at the level of legislative requirements - ? public procurement for reuse



COMPANIES: cooperation NO WASTE - products for reuse with higher added value



PROFESSIONAL STAKEHOLDERS: establish a lasting partnership in projects, including abroad in the field of social entrepreneurship, reuse



INSTITUTIONS, ORGANIZATIONS - cooperation in the field of training



18th EUROPEAN WEEK of
REGIONS and **CITIES**

12-15 OCTOBER 2020 | BRUSSELS

NETWORK REUSE

Center ponovne uporabe d.o.o., SO.P.
Vrazova 9, 2270 ORMOŽ

Cpu.marinka@siol.net

T: 386 41 634 594

www.cpu-reuse.com

<https://www.facebook.com/CenterPonovneUporabe>

Thank you for your attention



European Committee
of the Regions



**Interreg
Europe**

European Union | European Regional Development Fund

