



Living rivers: a driver for sustainable regional development

Online Thematic Workshop, 27 May 2021

Susanne Groos
Coordinator Infrastructure
Lahntal Tourismus Verband e. V.
TheeT



**Interreg
Europe**



European Union | European Regional Development Fund

River Lahn Trails – hiking, cycling and canoeing (ThreeT)



- Description
 - **Lahnwanderweg trail:** Certified hiking trail from spring to mouth.
- Results
 - 290 km main route, 19 stages, 1 certificate
 - approx. 90 km access routes to connect towns, villages, sights and train stops
 - 1 dataset (Open Data ready, schema.org compatible) feeds lahnwanderweg.de + numerous channels and route planners.
 - “Beacon-Project” for hiking in the destination Lahn Valley (supraregional marketing activities)
- Timing: permanent project
- Budget: ca. 300.000 EUR overall to build the trail. Plus ca. 74.000 € pa from the local authorities for marketing and central trail management plus annual costs for regional trail management (county authorities)
- Description
 - **Lahn-Cycling Route:** Certified cycling route from spring to mouth.
- Results
 - 250 km main route, 1 certificate
 - Directly connected to towns and villages, sights and train stops
 - 1 dataset (Open Data ready, schema.org compatible) feeds daslahntal.de + numerous channels and route planners.
 - “Beacon-Project” for cycling in the destination (supraregional marketing activities)
- Timing: permanent project
- Budget: for marketing and central trail management plus annual costs for regional trail management has to be established
- Responsible organizations for both trails: Coordination Lahntal Tourismus Verband e. V. in collaboration with the county authorities

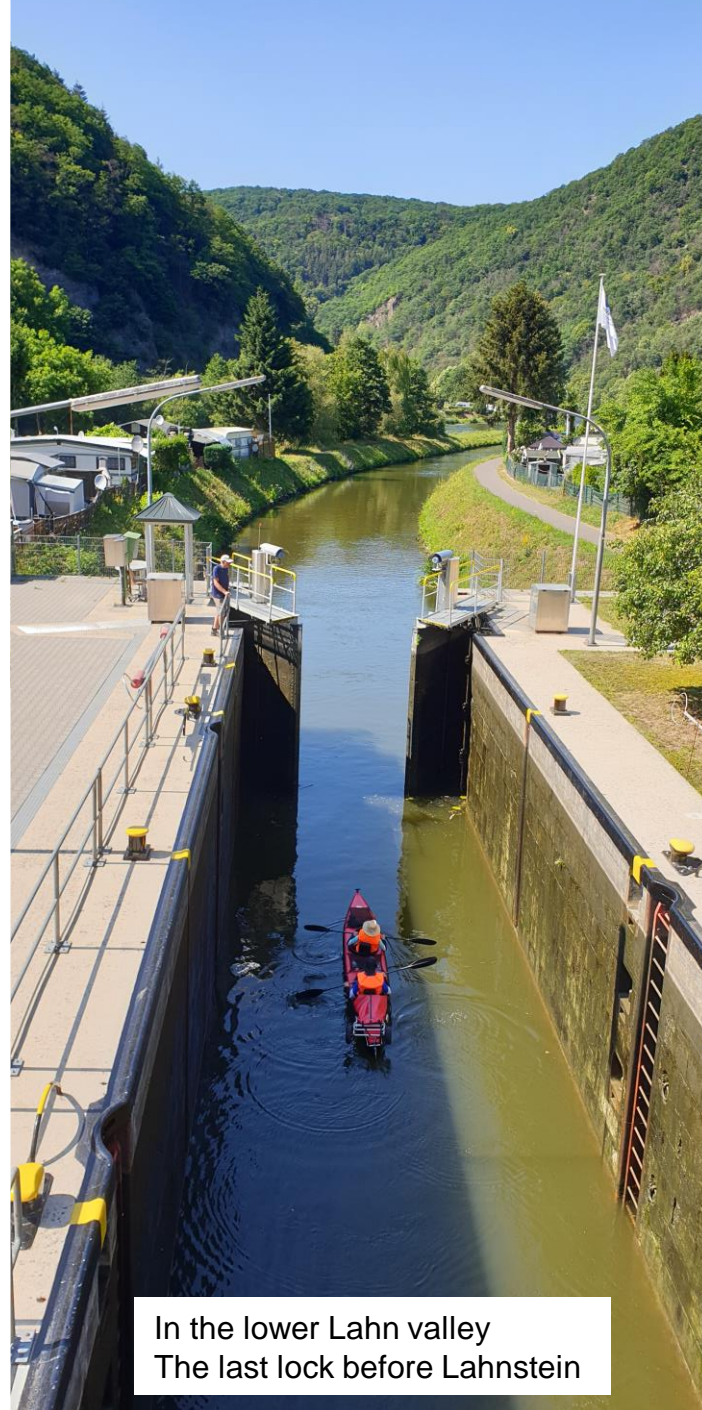


River Lahn Trails (ThreeT)

- **Description**
 - **Canoeing on the river Lahn** – coordinating and counterbalancing the different interests along the river
 - Ca 150 km of the river Lahn including all the locks and weirs belong to the German federal government. That part of the river is classified as Federal Waterway (Bundeswasserstraße). Which means, that certain rules automatically apply, e.g. for the behaviour on the water or in the locks.
 - Complimentary, the adjoining riverbanks are often classified as nature preservation areas or protected landscapes with a more restrictive set of rules.
 - Canoe tour operators / canoe distributors operate along the river Lahn since the 1980s
- **Results**
 - First visitor management concept: protection of sensitive areas and directed canoeing (1997)
 - Recovery for very sensitive areas e.g. on lock-islands.
 - 160 river-kilometer for canoeing etc. with 41 entry-/exit points and resting places.
 - Public-private-partnership between canoe tour operators and local authorities to set up portable toilets during the season
- **Timing:** permanent project
- **Budget:** app. 130.000 EUR from the local authorities and funded by two states to build the 41 entry-/exit points and resting places; plus yearly federal budget to man and maintain the locks (protected industrial monuments); plus budget from PPP for portable toilets during season; plus budget from local authorities to maintain the 41 entry-/exit points and resting places
- **Responsible organizations:** Coordination Lahntal Tourismus Verband e. V. in collaboration with the Waterways and Shipping Office, the nature conservation authorities, local authorities and the society of the canoe tour operators.



In the middle Lahn valley
near Villmar



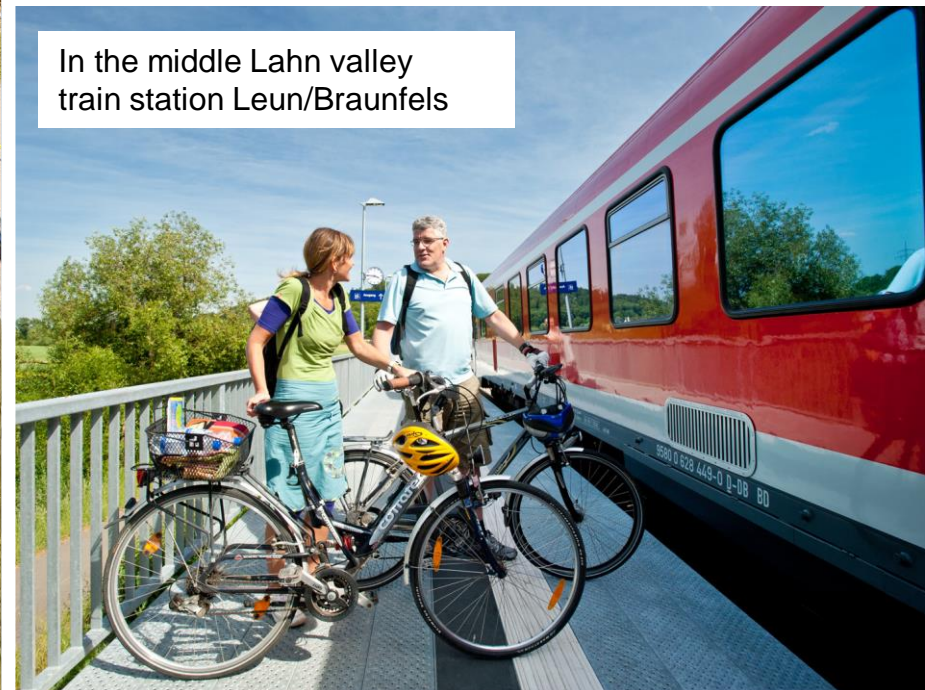
In the lower Lahn valley
The last lock before Lahnstein



In the middle Lahn valley
near Gießen



At the spring of the Lahn River
in the Rothaar-Mountains



In the middle Lahn valley
train station Leun/Braunfels



Thank you!

Susanne Groos
Coordinator Infrastructure
Lahntal Tourismus Verband e. V.
info@daslahntal.de



**Interreg
Europe**



European Union | European Regional Development Fund