

**BIOGOV**  
Interreg Europe



# Multi-Stakeholder Partnerships & Regional Biodiversity policies

Wim Hiemstra, Lead Partner, **province of Fryslân**

[w.hiemstra@fryslan.frl](mailto:w.hiemstra@fryslan.frl)

[www.interregeurope.eu/biogov](http://www.interregeurope.eu/biogov)

20 October 2020 Webinar Interreg Europe

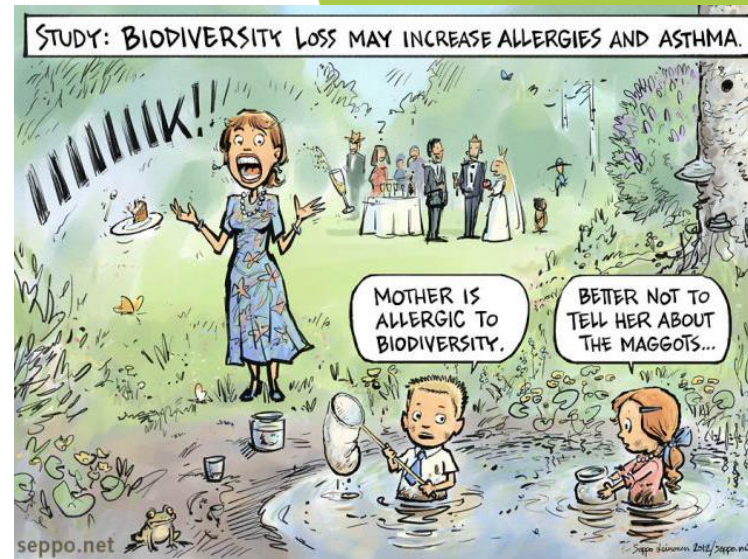


# Tsunami of crises ahead?



© Graham MacKay

Be sure to wash your hands and all will be well



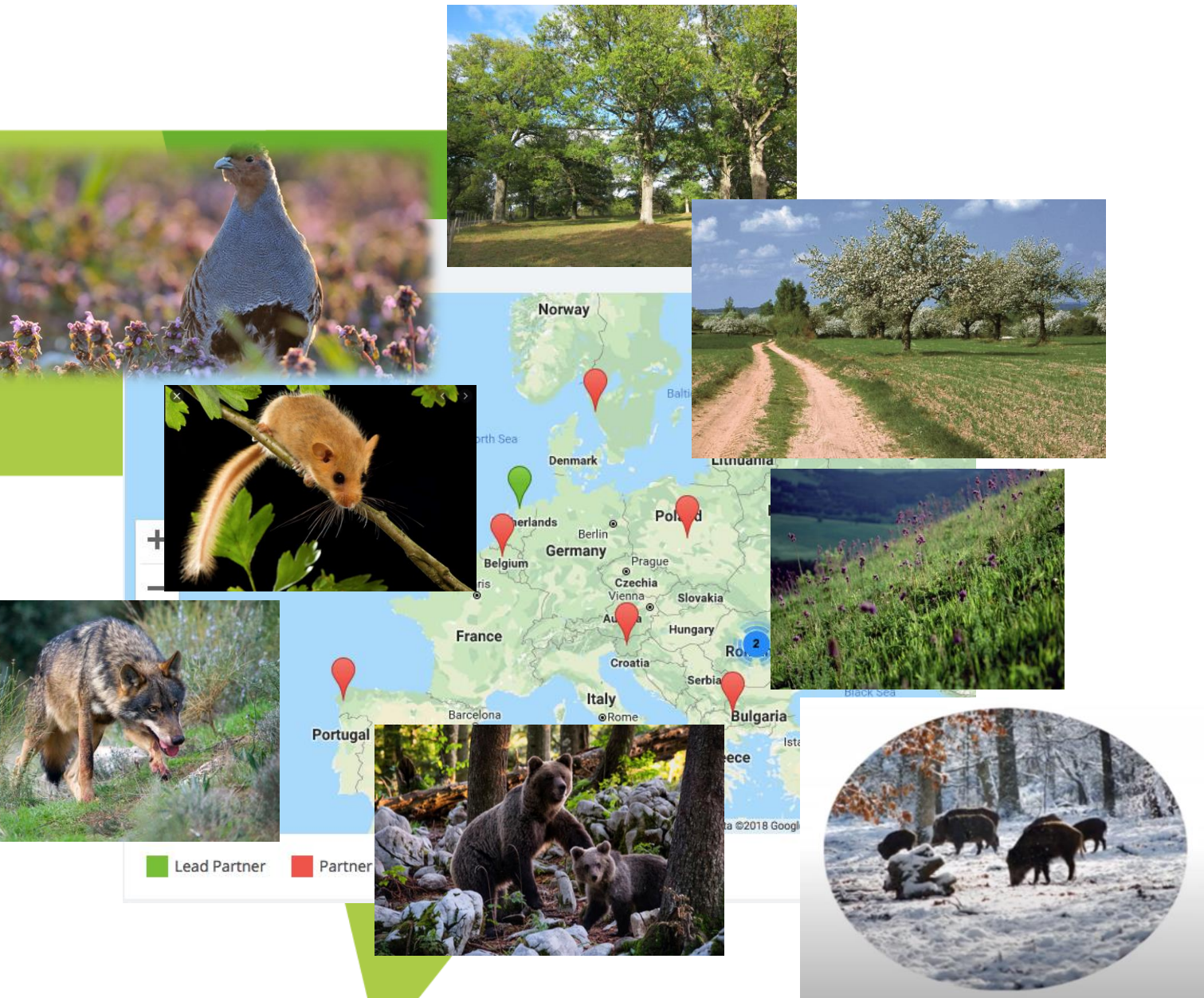


## 8 Regional Stakeholder Groups work with **Multistakeholder Partnership (MSP)** principles

1. *Embrace systemic change*
2. *Transform institutions*
3. *Work with power*
4. *Deal with conflict*
5. *Communicate effectively*
6. *Promote collaborative leadership*
7. *Foster participatory learning*

towards broad stakeholder support for regional policies through

- **Action Plans** (July 2018 - Oct 2020)
- **Implementation of Action Plans** (November 2020-May 2022)



# Action Plans

- Action Plan NL**
- ❖ RSG as MSP
  - ❖ Policy dialogue tool
  - ❖ Digital Storymap

- Action Plan SE**
- ❖ National guidelines SEPA
  - ❖ RSG as MSP
  - ❖ Digital Storymap Green Infrastructure
  - ❖ Public roadsides

- Action Plan PL**
- ❖ Biodiversity in Regional Strategy 2030
  - ❖ Landscape Audit as tool for biodiv protection
  - ❖ Plant new Traditional orchards
  - ❖ Info centre on traditional orchards

- Action Plan BE**
- ❖ Change Legislation
  - ❖ Policy Note River Scheldt
  - ❖ RSG as MSP Gulp Valley
  - ❖ Result-based payments

- Action Plan RO**
- ❖ Policy on ecological corridors between PA's
  - ❖ Member TWG to define national legislation
  - ❖ Compensatory schemes for land owners to conserve ecological corridors

- Action Plan ES**
- ❖ Territorial model on Green Infrastructure (GI) through GIS database
  - ❖ Land owners collectively conserve GI elements
  - ❖ Biodiversity campaigns for young people based on local population experience

- Action Plan SL**
- ❖ Capacities in participatory planning for biodiversity
  - ❖ More biodiversity in forest management (FM) approach
  - ❖ Recreational paths separate from biodiversity zones

- Action Plan BG**
- ❖ RSG represented in TWG OP Environment 2021-27
  - ❖ RSG co-define management plans PA's
  - ❖ Develop criteria for environmental excellence for businesses in PA's

Lead Partner Partner



# some Good practices

	SE	NL	BE	ES	PL	SL	RO	BG
SE	x				Tree habitats for beetle spp		Natural meadows	
NL	Digital Storymap	x	Sketch 'n Match					
BE		Coaches Nature-inclus farming	x				Result-based payments	
ES		Collective mgt system		x		Education youth forests		
PL	Biodiversity public roads		Landscape Audit		x			
SL	Voluntary conservation		Participatory planning			x		
RO	Biodiversity public roads				Traditional orchards		x	
BG						Businesses in PA's	Participation in policy	x



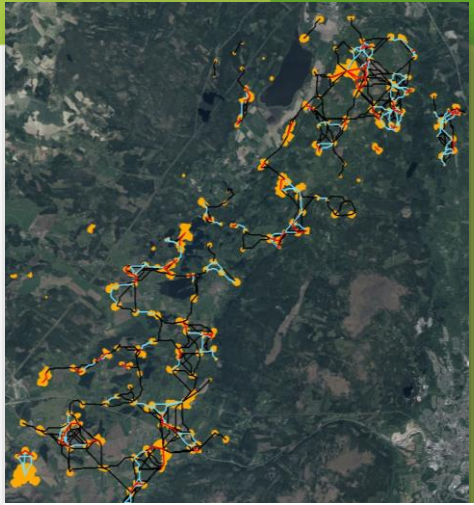
# Sweden Digital StoryMap

## BIOGOV

Information about the project. (background, finance etc.)

What's at stake and what do we want to achieve?

Connectivity among old broadleaved trees



Interactive maps of different GIS-analysis produced by the stakeholder group.

## Valle area

### GI in Valle

- Physical conditions
- Land use
- Regional core areas - habitats of special responsibility
- Connectivity of different habitat
- Important species
- Invasive species

### ESS in Valle

- Outdoor life
- Recreation
- Etc.

## Important actions

### Actionplan

- Action 1
- Action 2
- Action 3
- Action 4
- Action 5
- Action 6
- Action 7

### Other Actions

Other identified important actions that is not included in the action plan

## Our work

### Current work

Description of ongoing measures/actions

### Earlier work

Description of measures/actions carried out earlier

## The stakeholder group

### How we work together

- Presentation of the group Who we are and what we represent
- The 7 principles of MSP
- Etc.

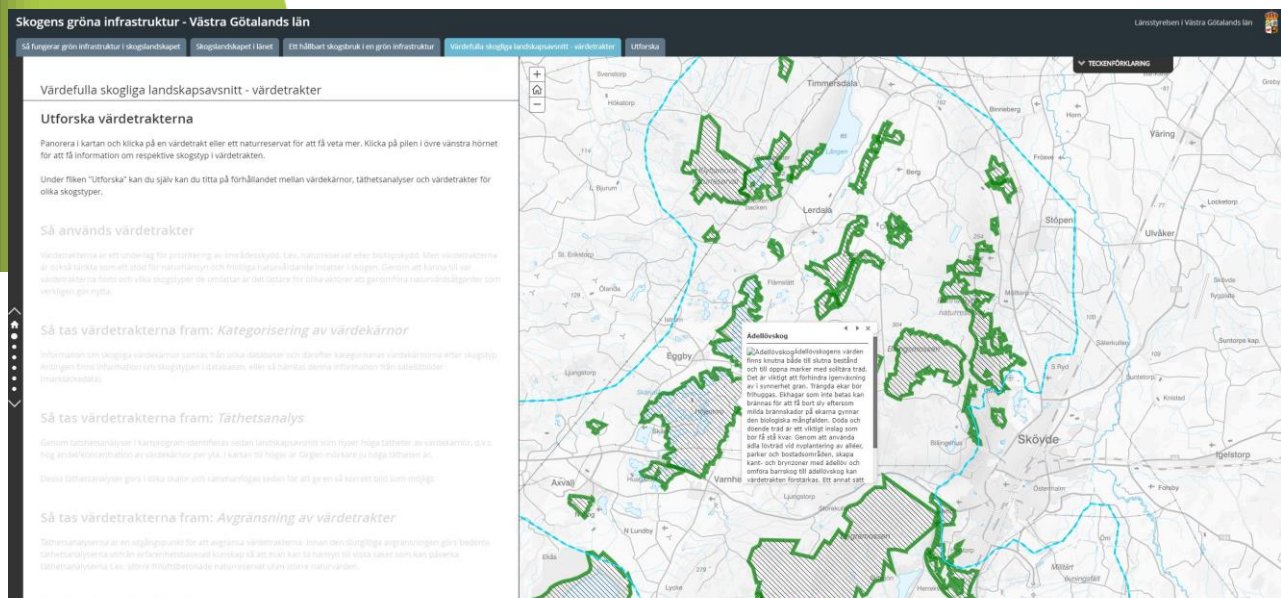
### Meetings

- Calendar
- Notes
- Etc.

### Influence and affect our work

- How different actors can contact the group and influence the work

### External partners etc.



Tool for communication and interaction between stakeholder group and the different actors in Valle



# Some Quotes from the partnership

- Even small things like bringing Stakeholders together is already a great achievement, even if it's not in Action plan and not monitored.
- Where does policy change start: local or national level? You don't choose; it's in the interaction between Stakeholders where change starts!
- We see good examples of biodiversity conservation at local level, but get stuck when politicians/higher level authorities get involved. So systemic issues and leadership issues are at stake. Need to revisit ToC, check assumptions on how change happens.

# Recommendations on governance

if you're not at  
the table  
you're probably  
on the menu



- Policy improvement: balancing different actors, interests, needs, perspectives is a complicated process. **Build your facilitation skills**
- Stakeholder dynamics: Keep focus and bridge between multiple arenas. **Start with building trust**
- Interreg Europe inspires good practices, but not in policy change. Local realities are so strong. **Build your case locally**
- Political reality & administrative procedures determine policy change. **Build (personal) alliances**





De Amerikaanse astronaut Jeffrey Williams maakte in 2016 vanuit het Internationaal Ruimtestation deze foto van het Noorden van ons land (de Waddeneilanden, Friesland en Groningen zijn goed zichtbaar), die laat zien op wat voor indrukwekkende planeet we leven. FOTO NASA/JEFFREY WILLIAMS

Thank you! Question?