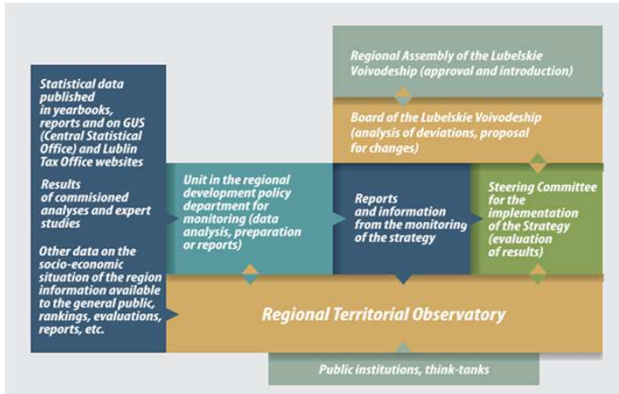
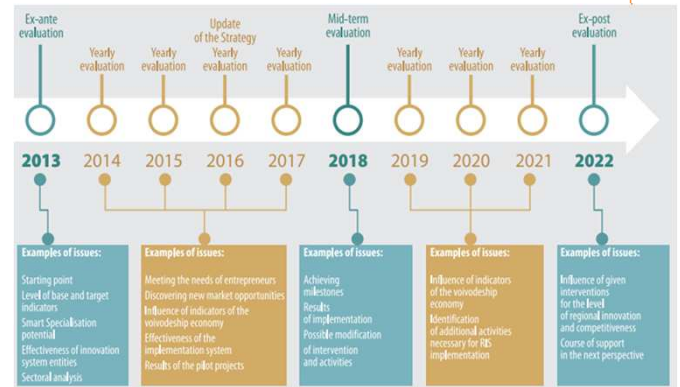


In August 2015, the Management Board of the Lubelskie Voivodeship set up the Regional Territorial Observatory - a platform for cooperation between the organizational units of the Marshal's Office and the voivodeship units generating the databases, including the Statistical Office in Lublin. The Regional Territorial Observatory - the main tool for monitoring and evaluating the Regional Innovation Strategy of the Lublin Region.



Flowchart of the system for the DS. LV 2020 monitoring and evaluation



Timeline and administrative process

Our assessment of the clusters' effectiveness will help us to design support tools and to create the cluster policy.

### Main indicators

There are 12 indicators of monitoring clusters. Most important are strategic result indicators such as:

- The number of companies that have innovated as a result of cluster collaboration, cluster initiative or co-operation, compared to the total number of companies that have innovated
- The number of applications from voivodeship for European programmes in terms of: innovation, R & D, internationalization, clusters
- The number of applications from voivodeship to national programmes in terms of: innovation, R & D, internationalization, clusters
- The number of successful applications from the voivodeship for European programs in terms of: innovation, R & D, internationalization, clusters

### Challenges

- The biggest challenge was to choose the appropriate indicators for the evaluation to be effective.
- Fortunately, the mid-term evaluation will allow us to introduce modifications of interventions and to tailor activities to the needs of entrepreneurs

### Success Factors

The greatest success of the Lubelskie Voivodeship was the early identification of the importance of clusters in innovation policy and the introduction of monitoring of clusters to the RIS.

### How/in what way do you use the results from the evaluation?

- The pilot project of the RIS monitoring system is to verify whether the adopted Strategy is correct and whether the available financial instruments are well-planned.
- The evaluation will make it possible for us to design properly the future financial period. It will also enable us to assess the clusters and their ability for innovations.