



**CENTRO  
OPERACIONAL  
INTEGRADO  
DE LISBOA**

# **LISBON ON THE SMART CITIES ROAD**



João Tremoceiro

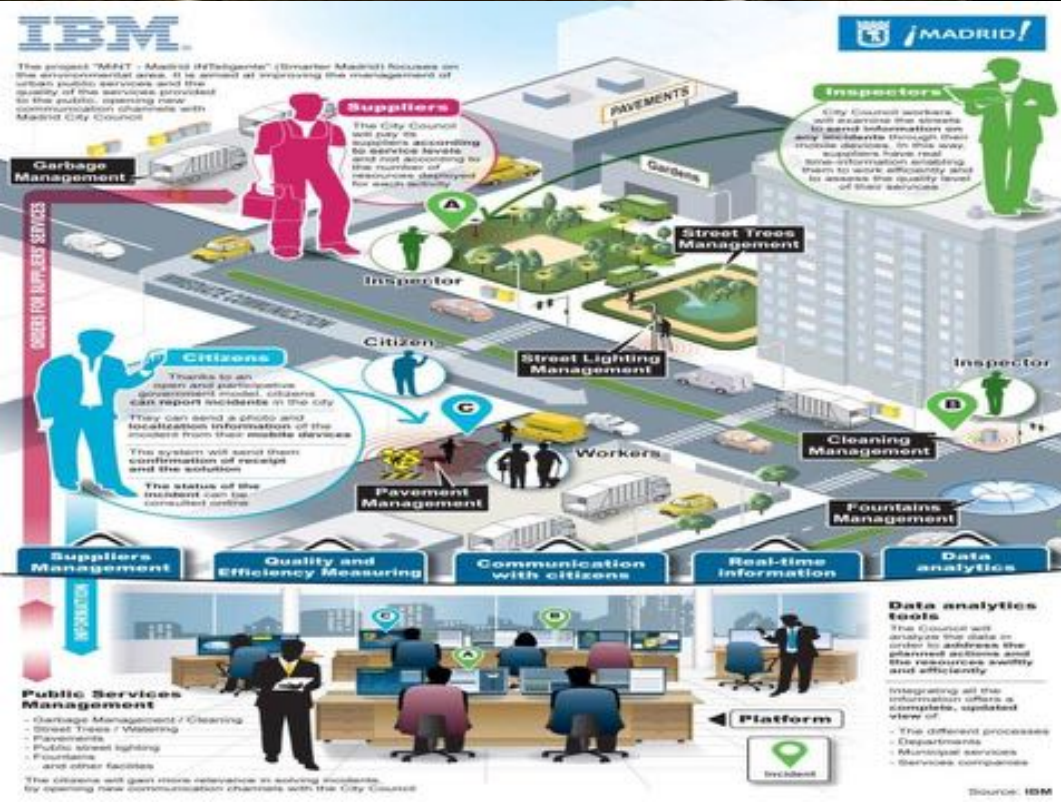
[joao.tremoceiro@cm-lisboa.pt](mailto:joao.tremoceiro@cm-lisboa.pt)

# WHAT INTEGRATED OPERATIONAL CENTER DO WE WANT?





# RIO DE JANEIRO OPERATIONS CENTER



# MiNT - MADRID INTELIGENTE



# SMART CITY?

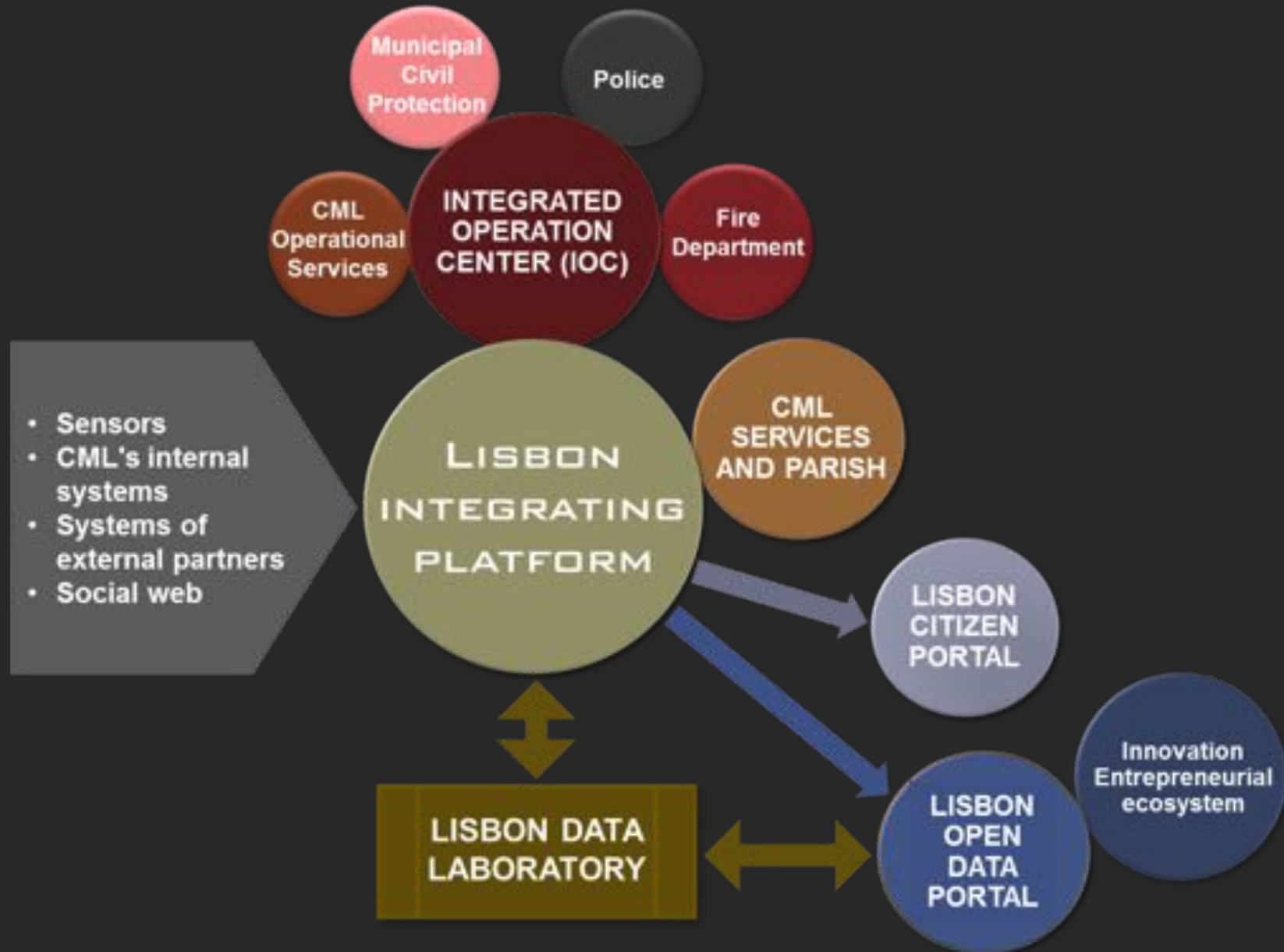
THE EFFECTIVE *INTEGRATION*  
OF PHYSICAL, DIGITAL AND  
HUMAN SYSTEMS IN THE  
BUILT *ENVIRONMENT* TO  
DELIVER *SUSTAINABLE,*  
*PROSPEROUS AND INCLUSIVE*  
FUTURE FOR ITS CITIZENS



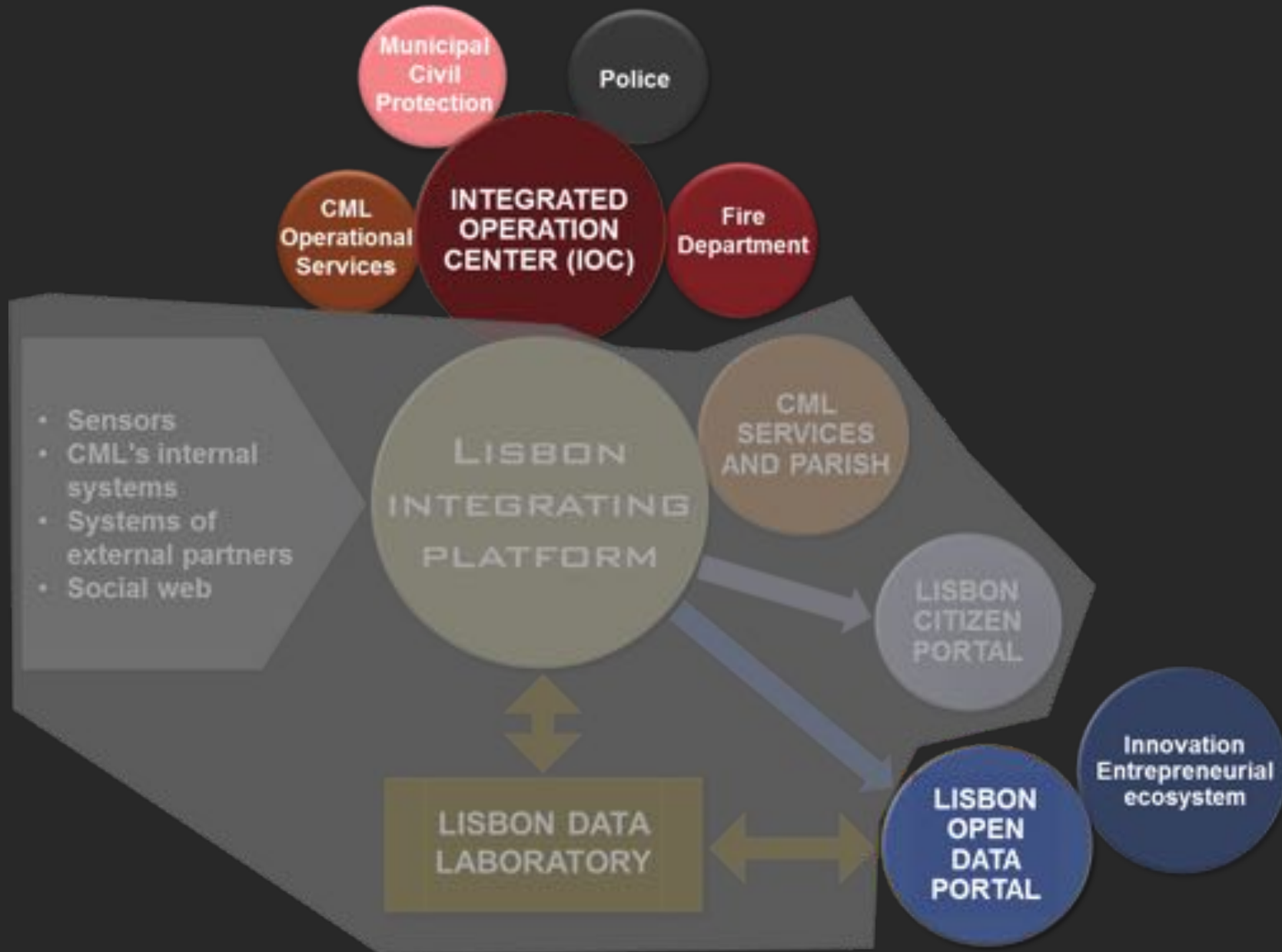
# **AN INTEGRATING PLATFORM AS INFRASTRUCTURE FOR THE INTELLIGENT MANAGEMENT OF THE CITY**



# LISBON INTEGRATING PLATFORM AS A DRIVER FOR MODERNIZATIONS AND INNOVATION



# LISBON INTEGRATING PLATFORM AS A DRIVER FOR MODERNIZATIONS AND INNOVATION



# INTEGRATED OPERATIONS CENTER (IOC)



**CENTRO  
OPERACIONAL  
INTEGRADO  
DE LISBOA**



# IOC MISSION

*Ensure an intelligent management of the city through monitoring, forecasting, and operational management of all activity with implications on the safety, prevention, emergency response and quality of life.*

# IOC'S OPERATIONS ROOM



A woman in a dark, sleeveless dress is captured in a dynamic pose on a city street. She is balancing on her right leg, with her left leg raised and bent at the knee. Her arms are extended upwards and outwards, mirroring the pose of a ballerina. The background shows a blurred urban environment with buildings, a street sign, and a traffic light. The lighting is bright, suggesting a sunny day. A semi-transparent dark blue horizontal band is overlaid across the middle of the image, containing the text 'OPEN DATA' in white, bold, sans-serif capital letters.

# OPEN DATA



# WHAT IS THE VALUE OF OPEN DATA

By 2020 in the EU

- Market value of EUR 75,7 billion
- Creation of 100,000 jobs
- Savings of EUR 1,7 billion in the reuse of data in public administration

# CHARTER OF PRINCIPLES FOR OPEN DATA

APPROVED IN APRIL 2016

Aims to promote...

- Active participation of citizens
- Transparency
- Economic development
- Service and efficiency improvement
- Data with open license, machine-readable and free of charge

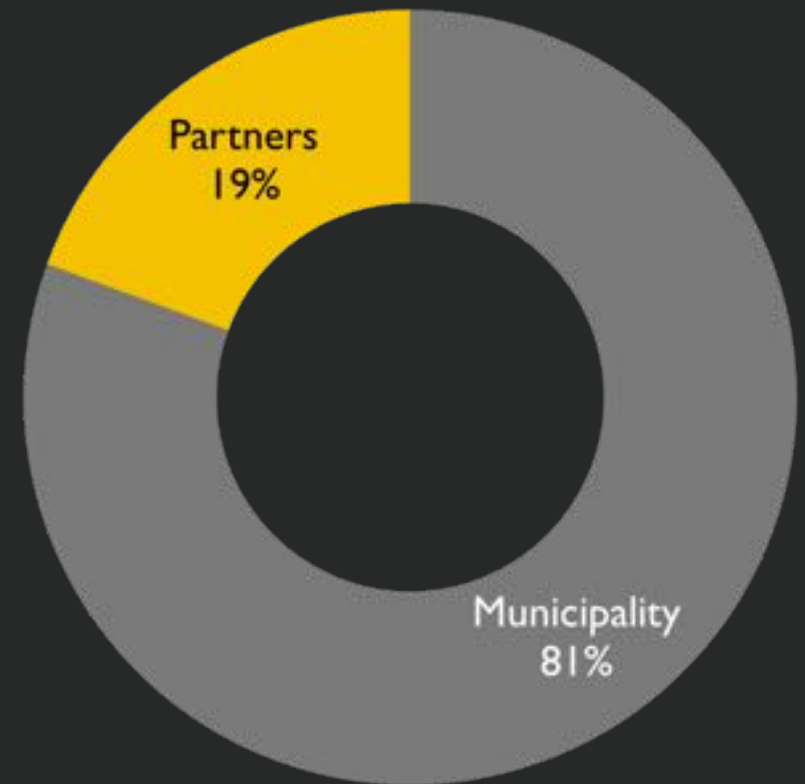


*In partnership with NOVA IMS*

# DATA IN THE "LISBOA ABERTA" PORTAL

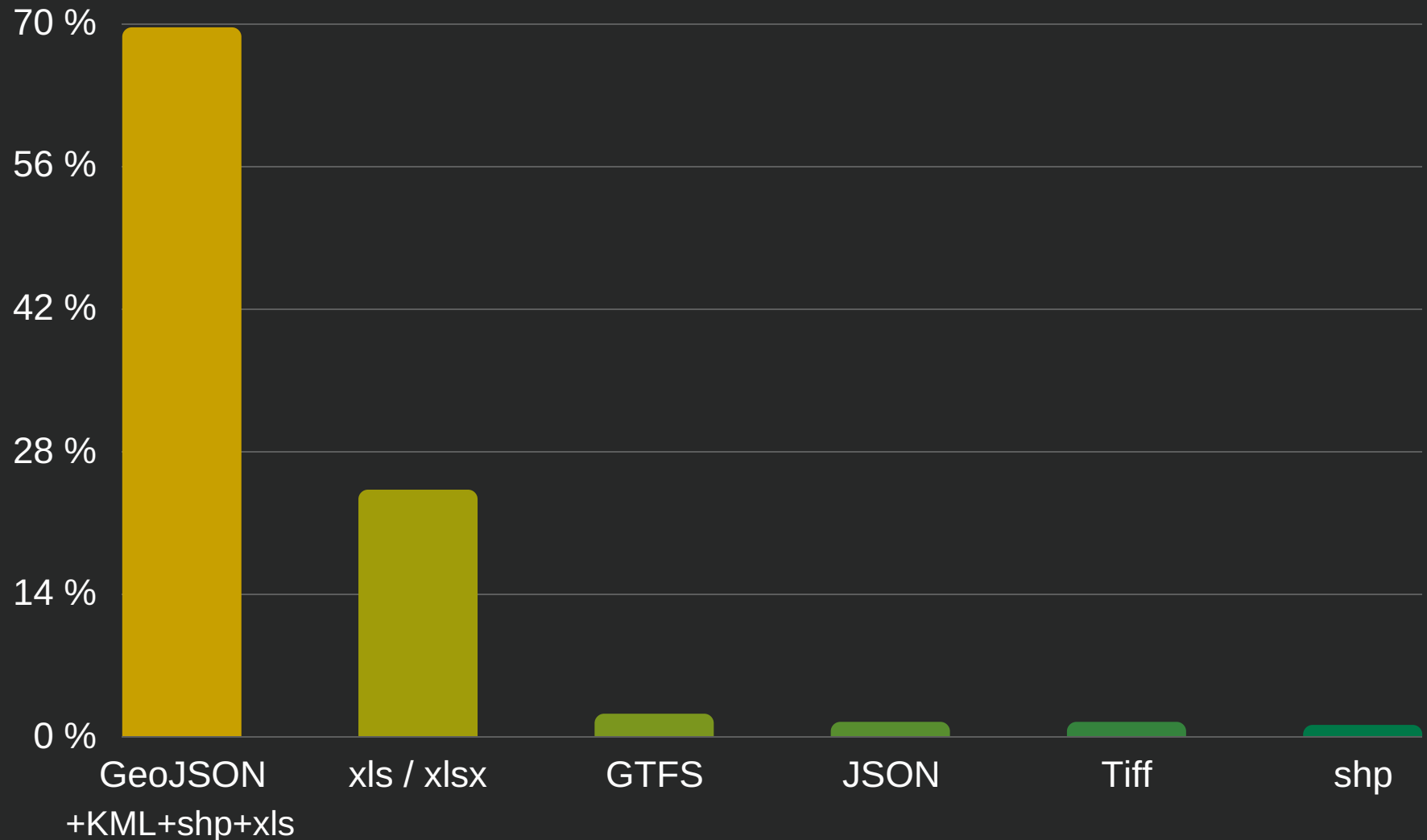
<http://dadosabertos.cm-lisboa.pt>

- 370 datasets
- Data from 13 different organizations
- Data organized in 18 different themes



# DATA IN THE "LISBOA ABERTA" PORTAL

<http://dadosabertos.cm-lisboa.pt>



# EXAMPLES OF DATA ALREADY IN THE PORTAL

- Formation of new companies
- Occupancy rates by type of hotel establishment
- Municipal director plan
- Geological surveys
- Public car parks and EMEL parking meters
- Lisbon's pedestrian map and pedestrian potential map
- Charter of solar potential of Lisbon
- Kiosks, newsstands, automatic public toilets
- Temporary occupations of public space (next 5 days)
- Circuits for the collection of municipal waste
- Cycle routes of the City of Lisbon
- Parks, gardens, playgrounds and outdoor fitness equipment
- School Population
- Timetables and public transport routes





# MAIN CHALLENGES



**IMPLEMENTATION OF  
THE INTEGRATED  
OPERATIONS CENTER**

(NOT ONLY A TECHNOLOGY MATTER)

**PROMOTE THE  
REUSE OF  
DATA**

(OPEN DATA AND IOC DATA)

**CHALLENGES**

**INCREASE THE  
QUANTITY AND  
QUALITY OF THE  
DAT**

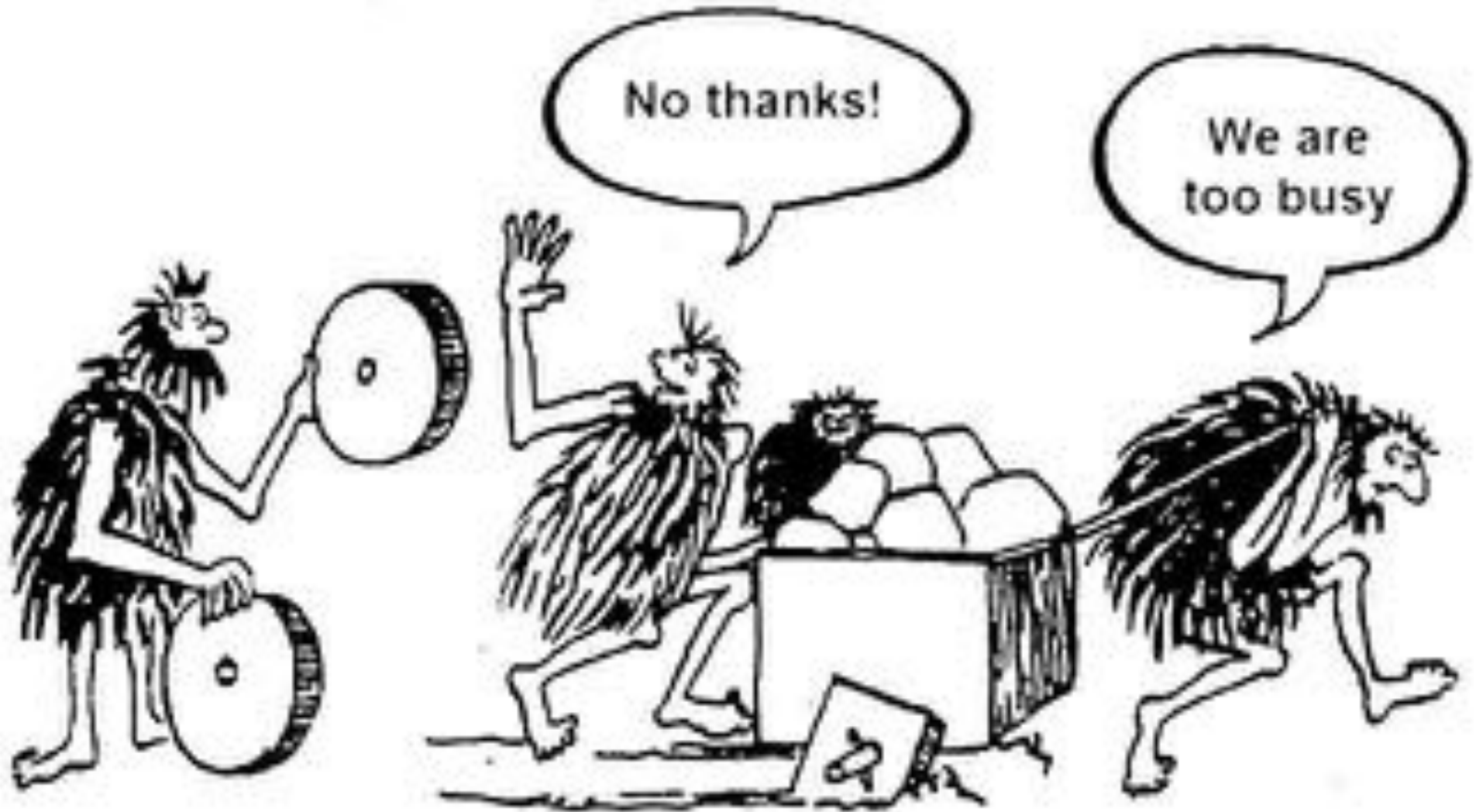
**ENSURING SUSTAINABLE  
DEVELOPMENT OF  
IOC'S PLATFORM**

(E.G.: VENDOR LOCK-IN, SECURITY, RIGHT TO  
PRIVACY)

# ADDRESS CHALLENGES IN PARTNERSHIP



# GRAB THE OPPORTUNITY



# THANK YOU

*[joao.tremoceiro@cm-lisboa.pt](mailto:joao.tremoceiro@cm-lisboa.pt)*

