

HIGHER  
Intermediate Project Event

6 October 2017

Congress Centre 'N. Germanos', Thessaloniki (Greece)

ERIAFF Network  
&  
S3 AGRIFOOD PLATFORM ON  
HIGH TECH FARMING



**Regione Toscana**

Fabio Boscaleri  
Policy Advisor  
Brussels liaison office



# The ERIAFF network

The European Regions for Innovation in Agriculture, Food and Forestry (ERIAFF) is a network launched on September 2012 by a core group of 24 European Regions, at the initiative of the Regional Government of Tuscany





# The ERIAFF network

- ▶ ERIAFF has the ambition to strengthen the performance of the European Innovation partnership for Agricultural Productivity and Sustainability (EIP AGRI) by acting as a facilitator of information flow and creation of links among stakeholders across EU regions, possibly leading to interregional EIP AGRI Operational Groups.
- ▶ Over the years, ERIAFF has attracted a growing number of partners, reaching today **76 Regions** (42 members and 34 observers) from 16 MS.
- ▶ ERIAFF has allowed **European Regions** to organize themselves into **dynamic networks** on diverse aspects related with Agricultural Innovation, becoming facilitators of both information flow and links between stakeholders across their territories as well as across the European Union.

11th-13th FINLAND

## ERIAFF 2018 CONFERENCE

Big Data  
High-Tech Agriculture  
Nutrition



June 11th-13th FINLAND



## ERIAFF 2018 CONFERENCE

Big Data  
High-Tech Agriculture  
Nutrition



### FEEDING & GREENING THE CITY

ERIAFF CONFERENCE 2017 // JUNE 29th & 30th

We intend to continue and reinforce the cooperation of the European Regions for Innovation in Agriculture, Food & Forestry (ERIAFF). We will do this by means of thematic working groups, organization subnetworks, technical meetings and an Annual ERIAFF Conference.

JUNE 2017 - THE HAGUE - THE NETHERLANDS

The next ERIAFF conference will take place from 11 to 13 June 2018 in South Ostrobothnia, Finland



From ERIAFF  
to the  
S3 AGRIFOOD  
PLATFORM ON  
HIGH TECH FARMING

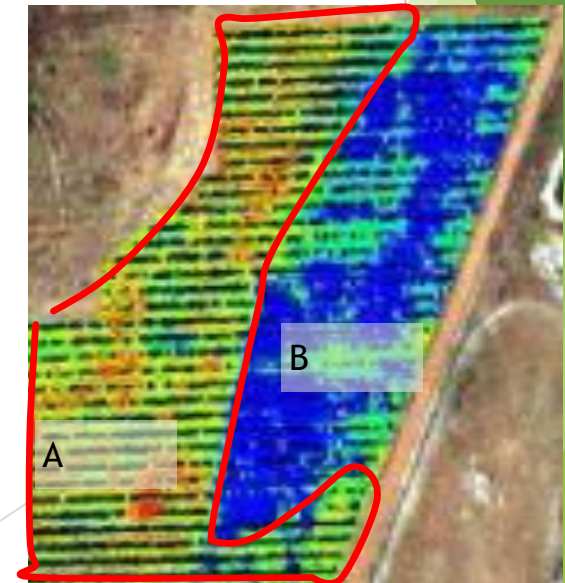
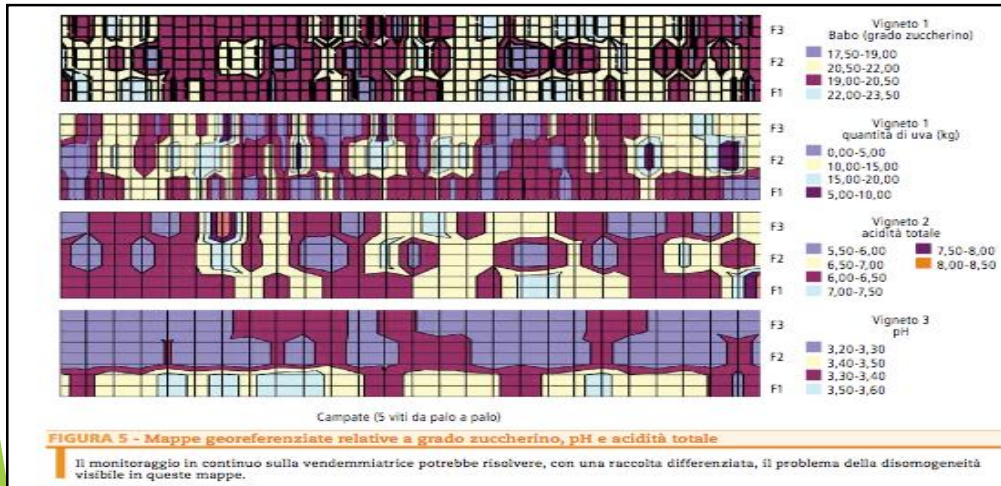
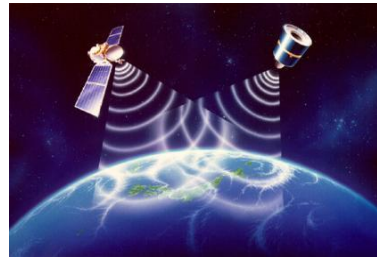
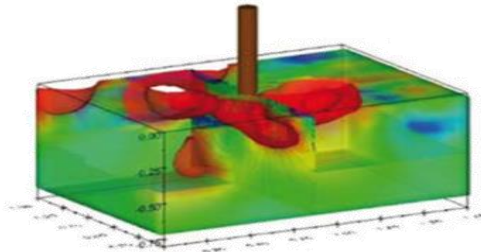


# History of the High Tech Farming Platform

- ▶ Tuscany Region promoted the idea during the 2016 SMART REGIONS Conference
- ▶ RIS3 approach
- ▶ Preliminary support by ERIAFF partners
- ▶ Partnership submitted in July 2016
- ▶ Official support from DG REGIO and JRC in September 2016
- ▶ Operations started during the S3 AGRIFOOD Platform kick-off event in Florence (6-7 December 2016)
- ▶ Technical meetings held in Brussels and Helsinki



# High tech farming Huge universe of technologies





# Conceptual framework Governance

EYES				MIND				INTELLIGENT ARMS			TECHNICAL SERVICES			EDUCATIONAL SERVICES	
Meteo sensors	Soil sensors	Canopy sensors	Product sensors	Data acquisition	Data analysis	Layers/images	DSS	MACHINERIES	Automation	Robotic	Installing	Maintenance	Repairing	Training	Demo

## 4 Value Chains:

- Tree nursery, Viticulture, Fruits (relatively highly intensive)
- Livestock outdoor & indoor
- Arable, Cereals, vegetables (outdoor - relatively less intensive)
- Protected cultivation (different types of greenhouses, highly intensive)





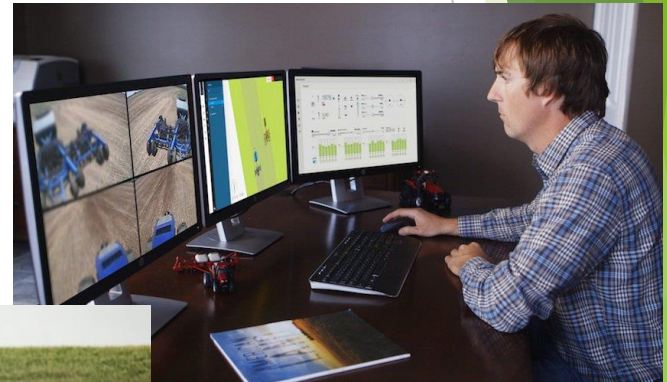
# Governance

	Co-leading regions	Participating regions
<b>Tree nursery, Viticulture, Fruits (relatively more intensive)</b>	<ul style="list-style-type: none"> <li>• Tuscany</li> <li>• Galicia</li> <li>• Extremadura</li> <li>• Gelderland</li> <li>• Central Macedonia</li> <li>• Marche</li> </ul>	<ul style="list-style-type: none"> <li>• West Macedonia</li> <li>• Weser-Ems</li> <li>• Zuid Holland</li> <li>• Limburg</li> <li>• North East Romania</li> <li>• Pays de la Loire</li> <li>• Veneto</li> <li>• Emilia-Romagna</li> <li>• Flanders</li> </ul>
<b>Livestock outdoor &amp; indoor</b>	<ul style="list-style-type: none"> <li>• Central Macedonia</li> <li>• Extremadura</li> <li>• Galicia</li> </ul>	<ul style="list-style-type: none"> <li>• East Sweden</li> <li>• Tuscany</li> <li>• West Macedonia</li> <li>• Weser-Ems</li> <li>• Auvergne Rhone Alpes</li> <li>• Northern Ireland</li> <li>• Estonia</li> <li>• Veneto</li> <li>• Emilia-Romagna</li> <li>• Noord Brabant</li> <li>• Flanders</li> </ul>
<b>Arable, Cereals, vegetables (outdoor)</b>	<ul style="list-style-type: none"> <li>• Tuscany</li> <li>• Greenport North Holland</li> <li>• Extremadura</li> <li>• Estonia</li> </ul>	<ul style="list-style-type: none"> <li>• Galicia</li> <li>• East Sweden</li> <li>• Weser Ems</li> <li>• Marche</li> <li>• Central Macedonia</li> <li>• North East Romania</li> <li>• Northern Ireland</li> <li>• Pays de la Loire</li> <li>• Veneto</li> <li>• Emilia-Romagna</li> <li>• Flanders</li> </ul>
<b>Protected cultivation (different types of greenhouses, highly intensive)</b>	<ul style="list-style-type: none"> <li>• Zuid Holland</li> </ul>	<ul style="list-style-type: none"> <li>• Central Macedonia</li> <li>• Tuscany</li> <li>• Greenport North Holland</li> <li>• Pays de la Loire</li> <li>• Flanders</li> </ul>



# Main scope of the platform: High Technology Farming for all farms

Those farms that are highly productive and branded,  
but in synergy with the new trend towards family and small farms





# Objective of the platform

## ▶ What?

- ▶ **Start a partnership for co-investment** in the area of high tech farming (in the context of the thematic smart specialisation platform on Agri-Food)
- ▶ **Identify and specify a specific area for co-investment**, with high potential business and societal return at regional and European level

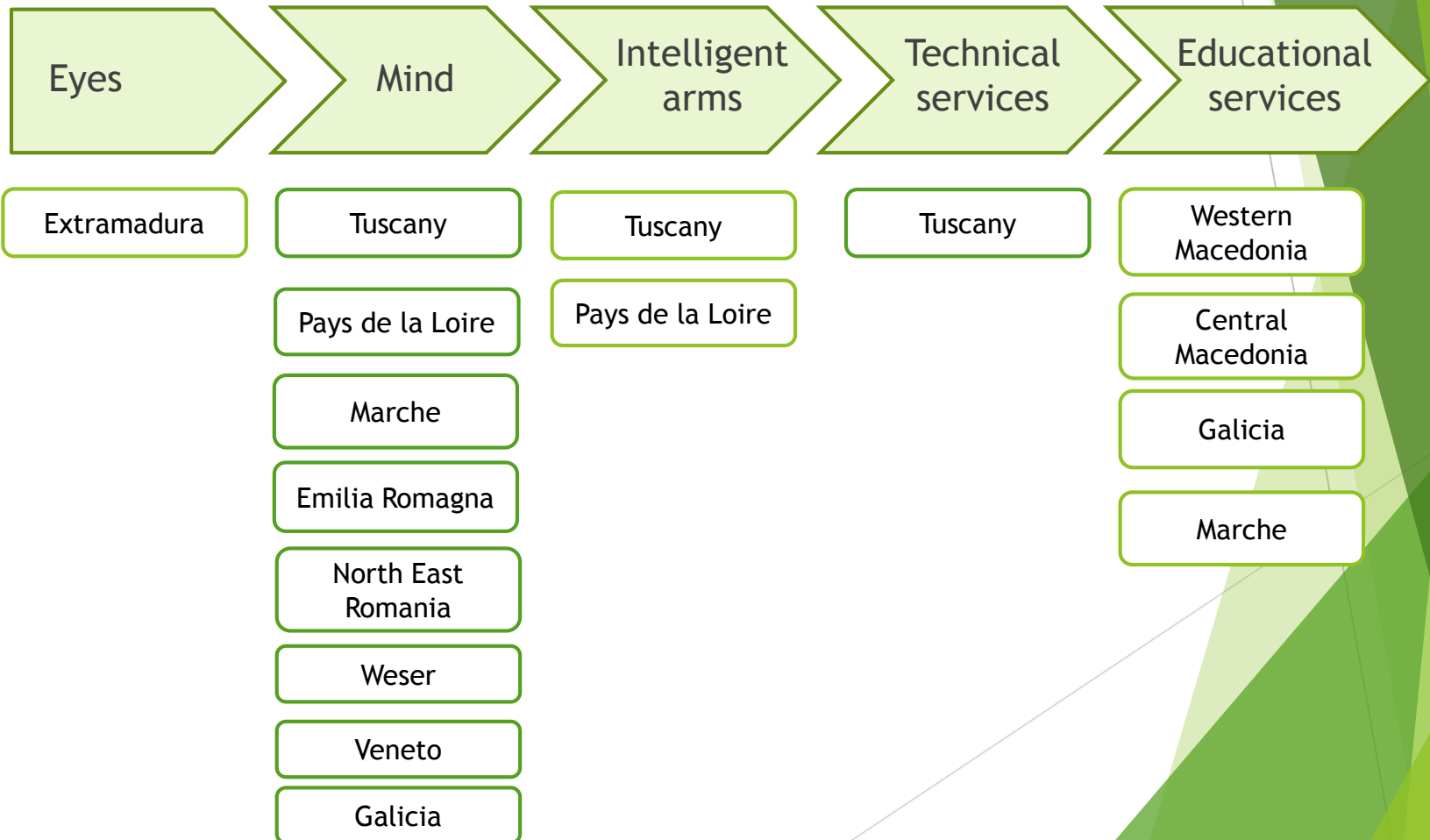
## ▶ How?

- ▶ Find the **required granularity to interest partnering** of real business and innovation actors in a **value chain network**
- ▶ Successive **steps of 'mapping' and 'matching'** through a discovery process
- ▶ The scoping note will **set the scene** for such a process, articulate the interest of lead-regions and the potential synergies between partners



# Mapping actors - Viticulture, Nursery, Fruit

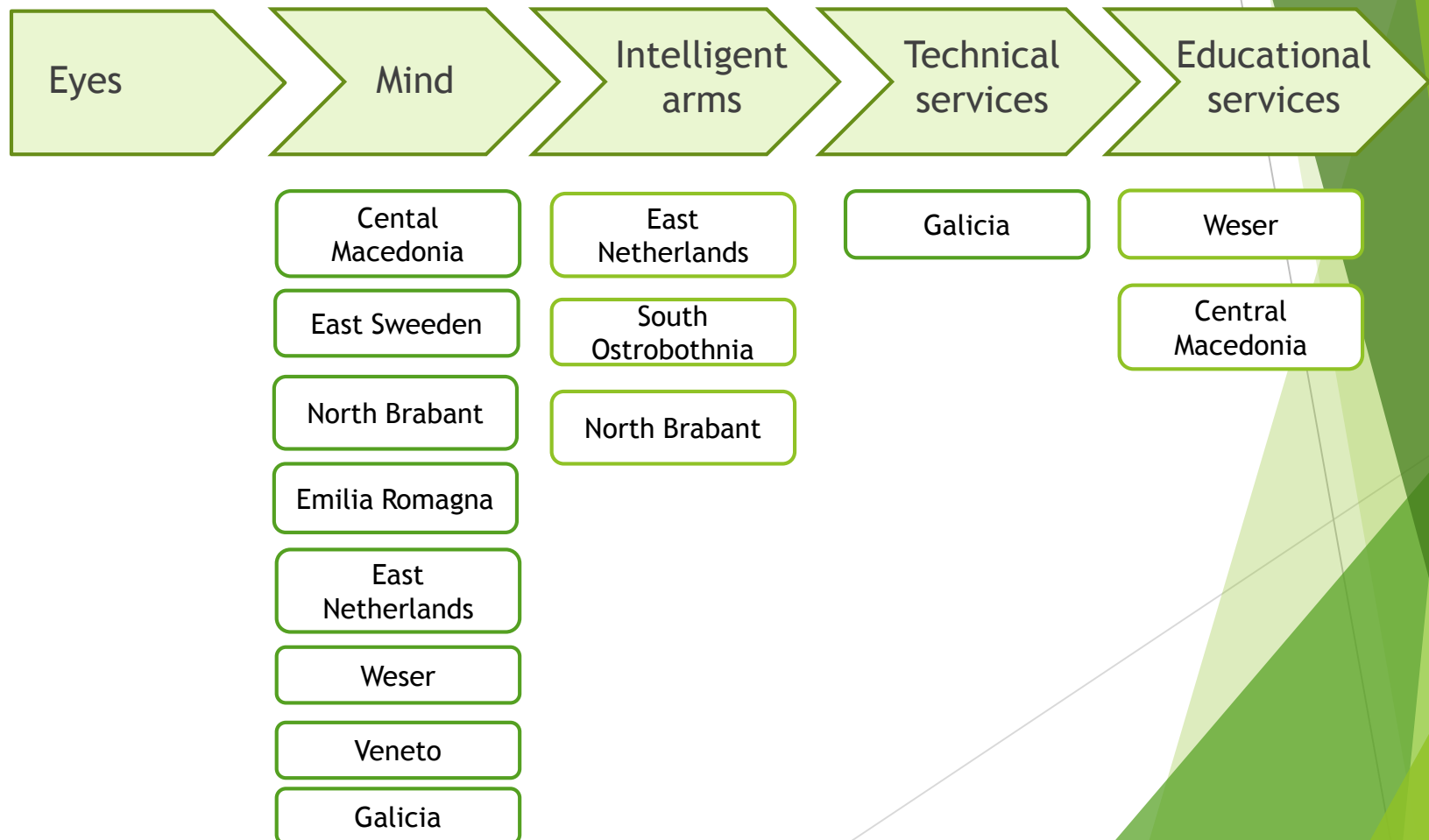
➔ Connecting smartly existing regional capabilities





# Mapping actors - Livestock Indoor

➔ Connecting smartly existing regional capabilities





## Mapping results - Some Numbers

- ▶ 232 Companies, 169 RTOs, 160 Farm/End User

Value Chain	Companies	RTOs	Farm/End User
Tree nursery, Viticulture, Fruits	71	45	63
Arable, Cereals, vegetables	69	68	83
Livestok	65	31	7
Protected cultivation	27	25	7

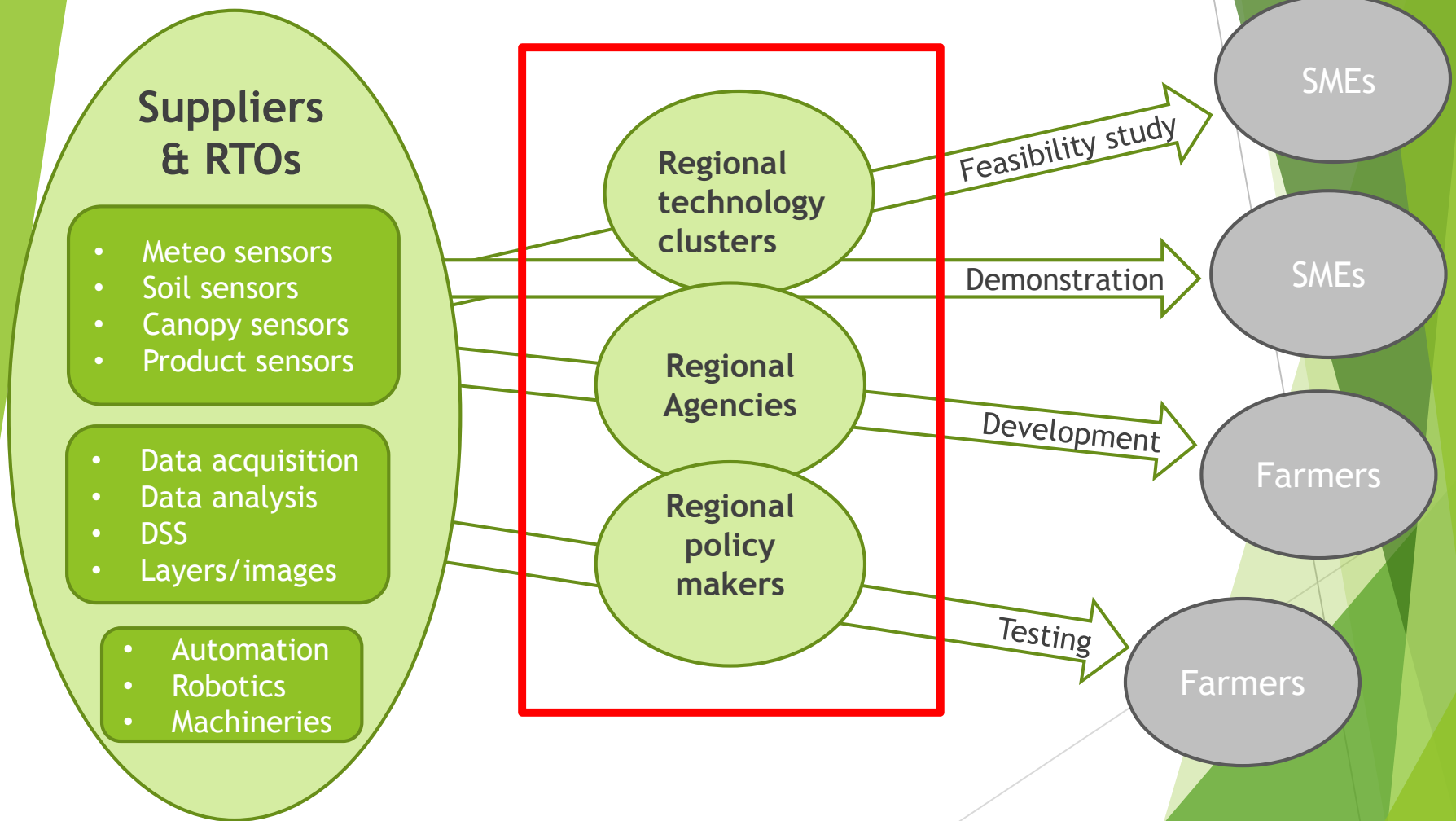


# Required granularity for connecting smartly existing regional capabilities

- Shared platform for joint-activities (common to various applications, domains, sectors), either by connecting / upscaling what already exists or by improving what exists and developing new activities
- Business oriented, including commitment of industry to lead/participate, specific attention should be paid to **industrial actors and SMEs**
- Added value of cross-regional collaboration



# S3 Agrofood Platform on High Tech Farming







# Contacts

Prof. Marco Vieri  
University of Florence  
Scientific Advisor of the  
Regional Minister for  
Agriculture  
[marco.vieri@unifi.it](mailto:marco.vieri@unifi.it)

Fausta Fabbri  
Regione Toscana  
Head of Unit Innovation,  
training and advisory  
services at DG Agriculture  
and Rural Development  
[fausta.fabbri@regione.toscana.it](mailto:fausta.fabbri@regione.toscana.it)

Fabio Boscaleri  
Regione Toscana  
Liaison officer in Brussels  
[fabio.boscaleri@regione.toscana.it](mailto:fabio.boscaleri@regione.toscana.it)