

Presented by:



Hosted by:



Headline Sponsor:



Supported by:



Organised by:



20
17

Local Transport Summit

16-17 November

Worsley Park Hotel & Country Club, Manchester

Delegate Information Pack

Speakers A-Z



JESSICA BOWLES

*Director of Strategy
Bruntwood*

Jessica is the Director of Strategy at Bruntwood having joined the business in April 2016, a new role to support the company's ambitions for long term growth. She is working across the Group with the teams in our existing markets to look at future opportunities and setting this in the context of the way that cities are growing and changing. Previously Jessica worked at Manchester City Council as head of City Policy. She developed the 10 year Manchester Strategy 'Our Manchester', lead work on the Northern Powerhouse with Sir Richard Leese and other city leaders and took a central role in the devolution agenda. Before coming to Manchester Jessica spent 15 years in Whitehall in a diverse range of roles related to transport and local government.



EAMONN BOYLAN

*Chief Executive
Greater Manchester
Combined Authority*

Eamonn was appointed Chief Executive of the Greater Manchester Combined Authority in January 2017. He played a key role in the development of the Housing Market Renewal Programme, the Northern Way Growth Strategy and, through his work with the Core Cities Group and the Association of Greater Manchester Authorities, in the emerging policy framework for city regions. He takes the lead role on Investment and on Planning and Housing for the AGMA Wider Leadership Team.



PAUL BUCHANAN

*Partner
Volterra
Partners*

Paul is an economist specialising in the planning, economic and financial appraisal of public and private sector transport investments and policies. Paul has particular expertise in the appraisal of urban rail systems in UK and overseas. In London his background includes the JLE, Crossrail, Underground extensions and a number of light rail schemes.

Paul led the development of the approach to valuing Wider Economic Benefits for Crossrail from 2002 to 2005, subsequently incorporated into Department for Transport guidance in 2006. WEBS show the real economic benefits associated with urban rail projects, not time savings but enabling city centre growth. Paul spent 12 years at Colin Buchanan and Partners, 11 as Board Director, then Managing Director. The CBP focus on interactions between the economy, transport and planning, remain his core area of interest. Paul is now a Partner at Volterra. His work includes HS2, rail schemes in Dublin, Auckland and Toronto, WEBS in Sydney and NZ and the economic impacts from the implementation of Crossrail.



MARTIN CAPSTICK

*Director of
Regional
Transport
Strategies
Department for
Transport*

Martin is the Director of Regional Transport Strategies in the Department for Transport. In this role Martin is responsible for

strengthening the links between Government and regional bodies on transport planning and delivery. The benefits of success in this area are that it means better dialogue and more coherence between Government and regions on long term plans, and that transport contributes more effectively to growth through initiatives such as the Northern Powerhouse and the Midlands Engine.

Martin is a career civil servant with experience particularly in transport and environmental roles. Recent previous experience includes development of HS2 (2011-2015) and director of strategic roads policy (2009-2010).



NEIL CHADWICK

*Director
Steer Davies
Gleave*

Neil is a Director of Steer Davies Gleave. With approaching 30 years' consultancy experience, Neil has worked with transport authorities across the country helping them develop their plans and programmes and then putting these into action as they apply for powers and funding. Central to his work for the last decade or so has been thinking about how enhancing transport systems can influence the shape and scale of the economy and in particular, what does this mean for transport strategies and making the case for investment.



STEVE CONNOR

*Chief Executive
Creative
Concern*

Steve co-founded Creative Concern in 2002 in the belief that inventive, high impact communications could

help to make the world a better place. The full service agency now boasts a team of 30 designers, strategists, writers, filmmakers and programmers working across almost 100 different clients.

Steve started out as a writer and campaigner and, before starting Creative Concern, worked as communications director for a sustainability think tank. Currently his key clients include Merseytravel, the Homes and Communities Agency, Forestry Commission, Asda, Manchester City Council, the University of Manchester, Aberdeen Chamber of Commerce and the national transport charity, Sustrans. He's also worked for many years with Transport for Greater Manchester.

Steve gives pro bono support to a number of key causes. He sits on the North West's Forestry and Woodlands Advisory Committee, is a Trustee of the Community Forests Trust and recently finished a three-year stint chairing the climate change plan for Manchester.



LOU CORDWELL

*Founder & CEO
Greater
Manchester
LEP*

Lou is synonymous with Manchester and its digital and creative scene as the founder and CEO of digital design studio, magneticNorth. magneticNorth is one of the UK's leading independent digital design studios with an award winning portfolio including collaborations with the BBC, Co-op Digital and Hull UK City of Culture. Alongside the day job, she's also a board member on Greater Manchester's Local Enterprise Partnership, Chair of Design Manchester and Director of AllBright, a new funding platform for female entrepreneurs on a mission to make the UK the best place in the world to be a female founder.



IAIN DOCHERTY

*Professor of
Public Policy &
Governance
Glasgow
University*

Iain is Professor of Public Policy and Governance and Director of External Engagement at the University of Glasgow Adam Smith Business School. Iain's research and teaching addresses the interconnecting issues of public administration, institutional change and city and regional competitiveness, with particular emphasis on the structures and processes of local and regional governance, policies for delivering improved economic performance and environmental sustainability, and the development and implementation of strategic planning and transport policies. His total research and consultancy awards in the last six years exceed £2 million. Iain has worked with and advised a range of private sector, governmental and other organisations including governments and public agencies in the UK, US, Australia, Canada, The Netherlands and Sweden, and the OECD. He is currently a Non-Executive Director of the ScotRail Operating Board, and a member of the Scottish Ministers' Governance Board overseeing the revised National Transport Strategy. Iain served as Non-Executive director of Transport Scotland, the national transport agency for Scotland, from 2006 – 2010, and is in 2012-13 was one of the Expert Panel advising the North East of England (Adonis) Economic Review. In 2015 he was appointed by the ESRC and Innovate UK as one of five Thought Leaders working to integrate scientific innovation and social science research across the UK.



JOHN DOWIE

*Director, Local
Strategies
First Group*

John joined FirstBus in autumn 2016 as Director Local Strategies to support partnership working across 14 operational companies and the company's response to the triple challenges of the Bus Services Act 2017, air quality and road congestion.

Prior to that John had a varied civil service career starting out in the UK Atomic Energy Authority, with periods in the Department of Energy, Department of Trade & Industry, HM Treasury, the Scottish Government and the Government Office for the East of England. More recently, he was ten years in the Department for Transport, leading on local transport from 2006 to 2013 and then from 2013-2015 Director of Strategic Roads, establishing Highways England and producing the first Roads Investment Strategy. His last role in DfT was as Interim Director-General for all the department's work on motoring, roads and local transport.



ROD FLETCHER

*Managing
Director
Landor LINKS*

Rod is a highly experienced, delivery focussed SME business manager. He has a solid track record of managing people and project profitability, whilst consistently achieving high profitable/quality client outcomes. Co-founder of Local Transport Today magazine in 1988, has been a serial innovator skilfully deploying multi-media communications to facilitate

knowledge-sharing, networking and learning across the transport sector and beyond. He has the ability to see the bigger picture and bring it to life by building teams and inspiring individuals.



ANDREW FORSTER

*Editor
Local Transport
Today*

Andrew has been Editor of Local Transport Today since 2001. He studied transport at Leeds University and completed a PhD on local transport policy. He spent a period as transport policy officer at City of Edinburgh Council working with David Begg, who was its transport convener.



STEVE GOODING

*Director
RAC
Foundation*

Steve is Director of the RAC Foundation, an independent think-tank that commissions and disseminates research relating to motoring and roads issues. Steve took over the helm at the Foundation in May 2015 after a civil service career encompassing many transport-related roles, latterly as Director General for Roads, Traffic & Local at the Department for Transport, where his responsibilities included developing the first Roads Investment Strategy, the Transport Strategy for the North, administering funding for local government, policy on road safety, and the running of the motoring services agencies. After graduating from Durham University Steve joined the civil service in 1983, moving to the Department of Transport in 1987 where, amongst

other roles, he was private secretary to transport ministers Peter Bottomley, Michael Portillo and Roger Freeman. Steve is a fellow of the CIHT, vice-president of the CILT and a trustee of the Rees Jeffreys Road Fund.



PHILIP GRAHAM

*Chief Executive
National
Infrastructure
Commission*

Prior to joining the National Infrastructure Commission, Phil Graham worked on many of the UK's most important infrastructure projects for the Department for Transport. He led the development of the government's high speed rail strategy from its inception and took it through one of the country's largest ever consultation and analysis processes, as well as leading the team supporting Sir Howard Davies' Airports Commission and working on the London Olympics. Previous roles include posts running DfT's incident response team, working on the Eddington study of transport and economic growth and as Private Secretary to the Secretary of State.



DONNA HALL

*Chief Executive
Wigan Council*

Donna has been Chief Executive at Wigan, the second largest council in Greater Manchester for the last five years. Despite being the third worst affected UK council by cuts of £100 million, Wigan has been voted by 72% of its staff as the best council to work for in the UK. Donna leads on Public Service Reform in Greater Manchester and was awarded a CBE for services to

local government in 2009. Donna initiated a major programme of reform in partnership with residents, The Wigan Deal. She is a passionate feminist and last year won Transformational Leader at the Northern Power Women Awards.



STEVE HUNTER

*Associate
Director
Steer Davies
Gleave*

Steve has had considerable success in securing funding and implementation powers for major public transport schemes from new rail stations to tramway extensions. He has demonstrated particular skills in developing a compelling strategic argument for intervention and ensuring continuity between this and the appraisal of value for money. His knowledge of current transport appraisal guidance is further demonstrated through the training courses he has delivered on business case development on behalf of external organisations and to colleagues. As well as holding the Transport Planning Professional (TPP) qualification, Steve is a member of the TPP Professional Standards Committee which manages the qualification.



PETER JONES

*Professor of
Transport and
Sustainable
Development
University
College London*

Peter is Professor of Transport and Sustainable Development in the Centre for Transport Studies at UCL; before which he was Director of the Transport Studies Group at the University of Westminster. He is a member of the Independent

Transport Commission, the DfT's Science Advisory Council and co-chair of its Joint Analysis Development Group. He is Scientific Co-ordinator for the EU funded 'CREATE' project on trends in urban mobility, is a member of the Commission on Travel Demand and of the London Roads and Streets Commission. He has been working on new analysis approaches to address future urban transport challenges (including 'vision and validate') and was awarded an OBE for services to national transport policy, in January 2017. He has a wide range of transport research and teaching interests, covering both analytical methods and policy. These include transport policy, traveller attitudes and behaviour, travel trends and the determinants of travel demand, traffic restraint studies, accessibility studies, policy option generation, major transport economic and social impact studies, public engagement, development of new survey and appraisal methods, and advances in urban street planning and design.



NICOLA KANE

*Head of Strategic
Planning &
Research
Transport for
Greater
Manchester*

Nicola is Head of Strategic Planning and Research at Transport for Greater Manchester (TfGM) and spends most of her time thinking about what the future might hold, as her team works to develop and deliver a new long-term transport strategy for Greater Manchester, covering the period to 2040. Nicola is a chartered town planner (MRTPI) and qualified transport planning professional (TPP) and joined TfGM in 2014 after 15 years of

working in consultancy. She has wide-ranging experience in transport strategy and policy development, development planning and travel behaviour change and is now enjoying the opportunity to help shape the future of transport in Greater Manchester. She was awarded Transport Planner of the Year 2017 by Transport Planning Society for her work in leading the development of the GM 2040 Transport Strategy.



BEATE KUBITZ

*Director of Policy
& Comms
TravelSpirit
Foundation*

Beate is a writer and consultant on the emerging mobility agenda. Her report, the first Annual Survey of Mobility as a Service in the UK was published in August by Local Transport Today publisher, Landor Links. Her career has included management in a small start up and a number of third sector organisations, most recently the shared transport organisation Carplus Bikeplus. She is currently also an advisor to an emerging technology start up and a board member of TravelSpirit, contributing to a number of policy papers on the mobility as a service agenda.



DR JON LAMONTE

*Chief Executive
Transport for
Greater
Manchester*

Jon Lamonte joined Transport for Greater Manchester (TfGM) as CEO in 2013. His portfolio covers rail, bus, tram, highways, cycling and other forms of active transport. TfGM is the executive delivery arm of the Greater Manchester Combined Authority.

Jon Lamonte was the CEO of Tube Lines from 2011 – 12, including the critical period of the London 2012 Olympic and Paralympic Games. Tube Lines, as part of Transport for London, was responsible for the maintenance, renewal and upgrade of the Underground infrastructure on the Jubilee, Northern and Piccadilly lines. Jon joined from the Royal Air Force where he fulfilled a number of senior operational roles and led major project delivery. His most recent role was Chief of Staff, Strategy, Policy and Plans, which included co-leading the Strategic Defence and Security Review into the maritime programme for the Ministry of Defence (MoD).

Prior to this Jon was Director General Finance for Defence Equipment and Support, the MoD's £17bn a year procurement and logistics organisation. Other roles included running the RAF's largest base, Brize Norton, with over 4,500 people and three fleets of transport and air-to-air refuelling aircraft.



MARK LEDBURY

*Head of
Transport
Appraisal and
Strategic
Modelling
Department for
Transport*

Mark is Head of Transport Appraisal and Strategic Modelling (TASM) at DfT and is responsible for overseeing the development of the Department's modelling and appraisal tools including WebTAG and the National Transport Model. Mark is a senior government economist with experience working in a number of public sector bodies including the Cabinet Office, Strategic Rail Authority and Home Office. Mark's previous roles in transport have included Local Major Schemes and the development of the Economic Case for HS2.

Speakers A-Z



PROF GLENN LYONS

*Associate Dean,
Faculty of
Environment and
Technology*

University of the West of England

Glenn is Professor of Transport and Society and founder of the Centre for Transport & Society (CTS) at UWE Bristol. He was CTS Director from 2002-2010 before becoming Associate Dean (Research and Enterprise) for the Faculty of Environment and Technology and its 300+ staff alongside continuing to be active as a research professor. His research focuses upon the role of new technologies in supporting and influencing travel behaviour both directly and through shaping lifestyles and social practices. A former secondee to the UK Department for Transport and more recently to the New Zealand Ministry of Transport, Glenn has led major studies into traveller information systems, teleworking, virtual mobility, travel time use, user innovation, road pricing, public and business attitudes to transport and future mobility. He has been involved in a number of strategic futures initiatives – most recently CIHT FUTURES. He is also a member of the Department for Transport's Joint Analysis Development Panel.



GREG MARSDEN

*Professor of
Transport
Governance
Leeds
University
Institute for
Transport
Studies*

Greg is Professor of Transport Governance at the Institute for Transport Studies at the University

of Leeds. He has researched issues surrounding the design and implementation of new policies for over 15 years covering a range of issues. Current work examines how the smart mobility transition will change how we think about what, how and who governs the mobility system. He is currently chair of the Commission on Travel Demand, looking at how to deal with alternative demand futures. He is the Secretary General of the World Conference on Transport Research Society and the Chair of the Special Interest Group on Governance. He has served as an advisor to the House of Commons Transport Select Committee and regularly advises national and international governments.



KEITH MITCHELL

*Chairman
Peter Brett
Associates*

Keith is Chairman of development and infrastructure consultants Peter Brett Associates and is a NIPA Board Member. Keith's professional experience encompasses major transport-led development and regeneration projects, as well as advice in support of the planning and delivery of major infrastructure. In a wide ranging career, Keith has also taken a keen interest in skills development - he was instrumental in the development of the qualification for professional transport planners, and now acts as Chairman of the Transport Apprenticeship Trailblazer which is developing apprenticeships across the transport sector.



PAUL MURRAIN

*Owner
Paul Murrain
Urban Design*

Paul is an urban design practitioner and teacher with 30 years experience. He is a former Senior Lecturer and Course Director at the Joint Centre for Urban Design in Oxford. He worked practiced and lectured (University of Miami) in the USA from 1996-2000. From May 2002-April 2005, he was Senior Design Director at HRH The Prince of Wales' Foundation for the Built Environment. Whilst at the Prince's Foundation, Paul was responsible for both the projects and the teaching programs. He continues to work with The Foundation as a network Practitioner and Senior Fellow. He also contributes to their teaching program. Paul was appointed as Visiting Professor at the University of Greenwich from 2007 to 2010 and in 2016 he was invited to a similar post at the University of Stockholm.



DR KATHRYN OLDHAM OBE

*Chief Resilience
Officer
Greater
Manchester
Combined
Authority*

Kathryn is the Chief Resilience Officer for Greater Manchester appointed in June 2017 to head up the city region's participation in the 100 Resilient Cities programme, an initiative pioneered by the Rockefeller Foundation. Prior to this she was Head of Civil Contingencies & Resilience for Greater Manchester's 10 local authorities, leading a specialist unit offering

disaster risk reduction expertise together with an emergency response service.

Kathryn led Greater Manchester's participation in the United Nation's Making Cities Resilient Campaign in which the city region has been recognised as a global role model. Kathryn holds a medical degree and has previously held a wide range of positions in local government.



IAN PALMER

*Transport
Modelling &
Analysis
Transport for
Greater
Manchester*

Ian has led transport modelling and appraisal work underlying the Transport Innovation Fund programme and the resulting formulation of the Greater Manchester Transport Fund (GMTF). He then led the economic appraisal elements of the funding approvals for the GMTF transport schemes, acting as both scheme promoter and local appraisal scrutiny on behalf of the GM authorities, leading the analytical work behind funding bid submissions ranging from Local Pinch Pointing Funding to the Single Growth Fund, as well as setting up the local processes for devolved funding Value for Money assurance. Ian was seconded for spent eighteen months to Transport for the North as the organisation grew out of the One North programme. Prior to joining TfGM (GMPTE), Ian worked as a consultant at MVA on large model systems and as a researcher into modelling traveller choice behaviour at ITS Leeds.



ELAINE SEAGRIFF

*Director of
Transport
Planning
CH2M*

Elaine is Director of Transport Planning with CH2M, based in London, where she leads their work on strategic policy and transport planning initiatives shaping city regions. As part of this she has recently taken up the role of Head of Transport at the West of England Combined Authority, based in Bristol on an interim basis to advise the new Mayor and Chief Executive on their strategy for the region.

Apart from a short time in the U.S. working on southern California's light rail strategy, Elaine has been a mainstay in London's planning and provision of transportation efforts for more than 25 years. Prior to joining CH2M she most recently served as Head of Transport Policy and Strategy for Transport for London. Elaine led the development and delivery of TfL's strategic policy covering environmental, sustainability and transport policy, service planning related to equalities and inclusion policy and impact assessments. She was responsible for developing and executing the Mayor's transport strategy and the transport elements of the Mayor's spatial development plan for the transport system for the next 20 years. Elaine has taken a truly integrated approach to development of London's amazing transport system. With CH2M, she is excited to apply her knowledge and experience to other cities and regions across the U.K. and internationally.

In addition to earning an MSc in Urban Development at the University of Strathclyde in Scotland, and BSc (Hons) in Geography at the University of

Glasgow, Elaine is a founding member of the UK's Transport Planning Society and served as its Chair and has been active internationally through her roles as Commissioner on Union Internationale des Transports Publics (UITP)'s Sustainable Development Commission and currently as a Commissioner of the UK's Travel Demand Commission and Board member of the Association of European Transport.



PETER STONHAM

*Chairman
Landor LINKS*

Peter studied transport to degree level and after working in research in the industry became a specialist writer on the subject. He edited Jane's Urban Transport Systems and formed a publishing company which launched magazines including Bus Business, Local Transport Today and Parking Review. He has led the development of Landor LINKS publishing and events activities with Rod Fletcher and has spoken at numerous specialist conferences and contributed to various policy research projects.



RICHARD WALKER

*Cities Policy &
Delivery
Department for
Transport*

Richard is a geographer and chartered town planner with 26 years' experience in transport planning. After 10 years at consultancy Colin Buchanan and Partners, he has since had roles at the Greater London Authority, Strategic Rail Authority, South East England Regional Assembly and, since 2010, at the Department for Transport where he is currently a

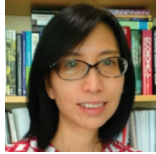
Speakers A-Z

strategy adviser with the Regional Strategies North & Midlands team. He was on the board of the Transport Planning Society from 2000-2008, including two years as its Chair.



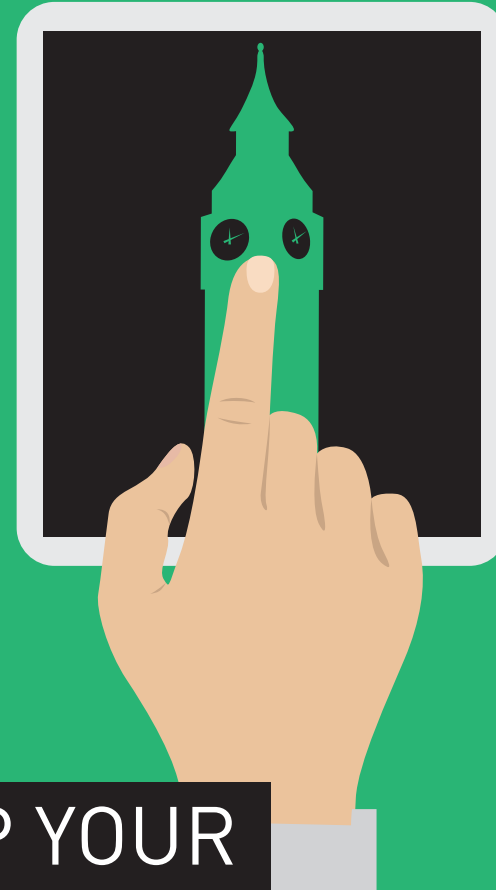
**SIMON
WARBURTON**
*Transport
Strategy Director
Transport for
Greater
Manchester*

Simon is the Transport Strategy Director at TfGM, leading on the development of a forward transport policy, investment and funding strategy that will support the city region's ambitious growth programme and dovetail with major national interventions including HS2 and Northern Powerhouse Rail. During his 18 years in transport policy work for Greater Manchester, Simon has been involved in the development of four Local Transport Plans, the Greater Manchester Transport Innovation Fund debate and the Greater Manchester Transport Fund, which has supported the £2 billion investment programme that is now coming to a conclusion. In recent times, his work has included the establishment of Greater Manchester's transport devolution policies, in preparation for the recently elected Mayor, the city region's Growth Deal investment programme and the development of Transport for the North. Much of this work has now culminated in Greater Manchester's forward-looking 2040 Transport Strategy, which provides an innovation-led blueprint for a future transport system that will meet the economic, social and environmental needs of the fast-growing city region.



**CECILIA
WONG**
*Professor of
Spatial Planning
University of
Manchester*

Cecilia is Professor of Spatial Planning, Fellow of the Royal Town Planning Institute and Fellow of the UK Academy of Social Sciences. She is co-editor of *Town Planning Review*. She has research expertise on strategic spatial planning, policy monitoring and analysis, urban and regional development, and housing and infrastructure planning. She has conducted major research projects for the UK central government departments, Economic and Social Research Council, Joseph Rowntree Foundation, Royal Town Planning Institute, Homes and Community Agency, and regional and local bodies. She was commissioner of the Labour Party's Lyons Independent Housing Review, a member of Department for Communities and Local Government's expert panel on housing and planning, an expert panel member of the European Commission's Urban Audit II and an expert group member of the UN-Habitat City Prosperity Index. She is currently carrying out a three year research project with CAS, funded by the Economic and Social Research Council and the China Natural Science Foundation, on 'Eco-Urbanisation: promoting sustainable development in metropolitan regions of China'.



**TAP YOUR
SPECIALISM**

TransportXtra.com

2017 Local
Transport
Summit

13.00 Registration

Teas and Coffees served

14.00 Introduction: Actions since last year's Summit

Peter Stonham Chairman, Landor LINKS & Editorial Director,
Local Transport Today

Richard Walker Cities Policy & Delivery, Department for Transport

14.10 Hosts' Welcome

Martin Capstick Director, Regional Transport Strategies, DfT

Dr Jon Lamonte Chief Executive, Transport for Greater Manchester

Rod Fletcher Managing Director, Landor LINKS

14.20 4 views of the UK local transport landscape: where are we now?

Facilitator: *Andrew Forster* Editor, *Local Transport Today*

Do we need a new offer from the profession to the politicians and the public?

Steve Gooding Director, RAC Foundation

The public/private balance in transport provision: where are we now and is it fit for the future

Iain Docherty Professor of Public Policy and Governance, Glasgow University

Is transport planning/appraisal fit for purpose?

Paul Buchanan Partner, Volterra Partners

The NIC's consultation on the National Infrastructure Assessment: priorities for national infrastructure

Phil Graham Chief Executive, National Infrastructure Commission

15.30 Delegates collect teas and coffees for round-table discussions

15.45 Round-table discussions: identifying key issues

1 Where is/should the decision-making and who is setting the vision?

Facilitator: *Professor Glenn Lyons* Associate Dean (Research and Enterprise), Faculty of Environment and Technology (FET), UWE

2 Given competition for investment should transport decisions be made in isolation or as part of a wider framework for city regions?

Facilitator: *Elaine Seagriff* Director of Transport Planning, CH2M

3 Who is/should be checking the validity of proposals and how?

Facilitator: *Peter Jones* Professor of Transport and Sustainable Development, UCL

4 What's the politics of transport and what is the professional role in the mix?

Facilitator: *Neil Chadwick* Director, Steer Davies Gleave

5 Are we embracing the key issues: e.g. MaaS, shared car use, air quality, placemaking and housing

Facilitator: *Steve Gooding* Director, RAC Foundation

16.30 Report back from round-tables

17.00 Greater Manchester showcase session

Presentation on the strategic context for transport in Greater Manchester

Eamonn Boylan Chief Executive, Greater Manchester Combined Authority

Simon Warburton Transport Strategy Director, Transport for Greater Manchester

17.40 Panel discussion of different perspectives on the future in Greater Manchester and exploring what this means for how we plan our transport

Facilitator: *Steve Connor* Chief Executive, Creative Concern

Jessica Bowles Director of Strategy, Bruntwood

Lou Cordwell Founder & CEO, Greater Manchester LEP

Donna Hall Chief Executive, Wigan Council

Kathy Oldham Chief Resilience Officer, GMCA

Nicola Kane Head of Strategic Planning & Research, TfGM

Cecilia Wong Professor of Spatial Planning, University of Manchester

19.00 Networking reception

Including a sponsors introduction

Neil Chadwick Director, Steer Davies Gleave

Dr Jon Lamonte Chief Executive, Transport for Greater Manchester

19.45 Dinner

With guest speakers:

Andy Burnham Mayor of Greater Manchester

Paul Murrain Transport and Urban Design and Placemaking

22.15 Post dinner drinks at Worsley Old Hall

08.45 Registration

Teas and Coffees served

09.15 Reflections on day 1

John Dowie Director, Local Strategies, First Group

Professor Glenn Lyons Associate Dean (Research and Enterprise), Faculty of Environment and Technology (FET), UWE

09.35 Presentation on future of travel demand

Greg Marsden Professor of Transport Governance, Leeds University Institute for Transport Studies

10.00 Vision & validate update

Led by: *Peter Jones* Professor of Transport and Sustainable Development, UCL
Nicola Kane Head of Strategic Planning & Research, TfGM

- Getting visioning process right
- Getting validation technical process right
- Getting the politics right

Syndicate Groups

Future cities and the impact of disruptive change

Led by: *Greg Marsden* Professor of Transport Governance, Leeds University Institute for Transport Studies

Beate Kubitz Director of Policy & Communications, TravelSpirit Foundation

The implications of MaaS, CAVs, smart cities, new forms of travel behaviour etc. (*taking forward the best of Smarter Travel 2017*)

Transport and Placemaking

Led by: *Paul Murrain* Transport and Urban Design and Placemaking
Richard Walker Cities Policy & Delivery, Department for Transport

Transport planning & urban design – challenges in the process and case studies of getting it right

10.45 Feedback from the three streams

11.20 Coffee break

11.40 Professional practice next steps

How we can incorporate the new thinking into our activities at national, regional and local level with new forms of evaluation and appraisal

Facilitator: *Andrew Forster* Editor, Local Transport Today

Keith Mitchell Partner, Peter Brett Associates

Mark Ledbury Head of Transport Appraisal and Strategic Modelling, DfT

Peter Jones Professor of Transport and Sustainable Development, UCL

Steve Hunter Associate Director, Steer Davies Gleave

Ian Palmer Transport Modelling & Analysis, TfGM

Jane Briganshaw Design England

12.45 Summing up and the future of the discussion

Peter Stonham Chairman, Landor LINKS & Editorial Director, Local Transport Today

Richard Walker Cities Policy & Delivery, Department for Transport

13.00 Lunch and close of event

Headline Sponsor



Hosted by



Supported by



Presented by



Table Hosts



Organised by

