



# CLUSTERIX 2.0

Interreg Europe



## Joint Cooperation Programme under S3

North-East Romania

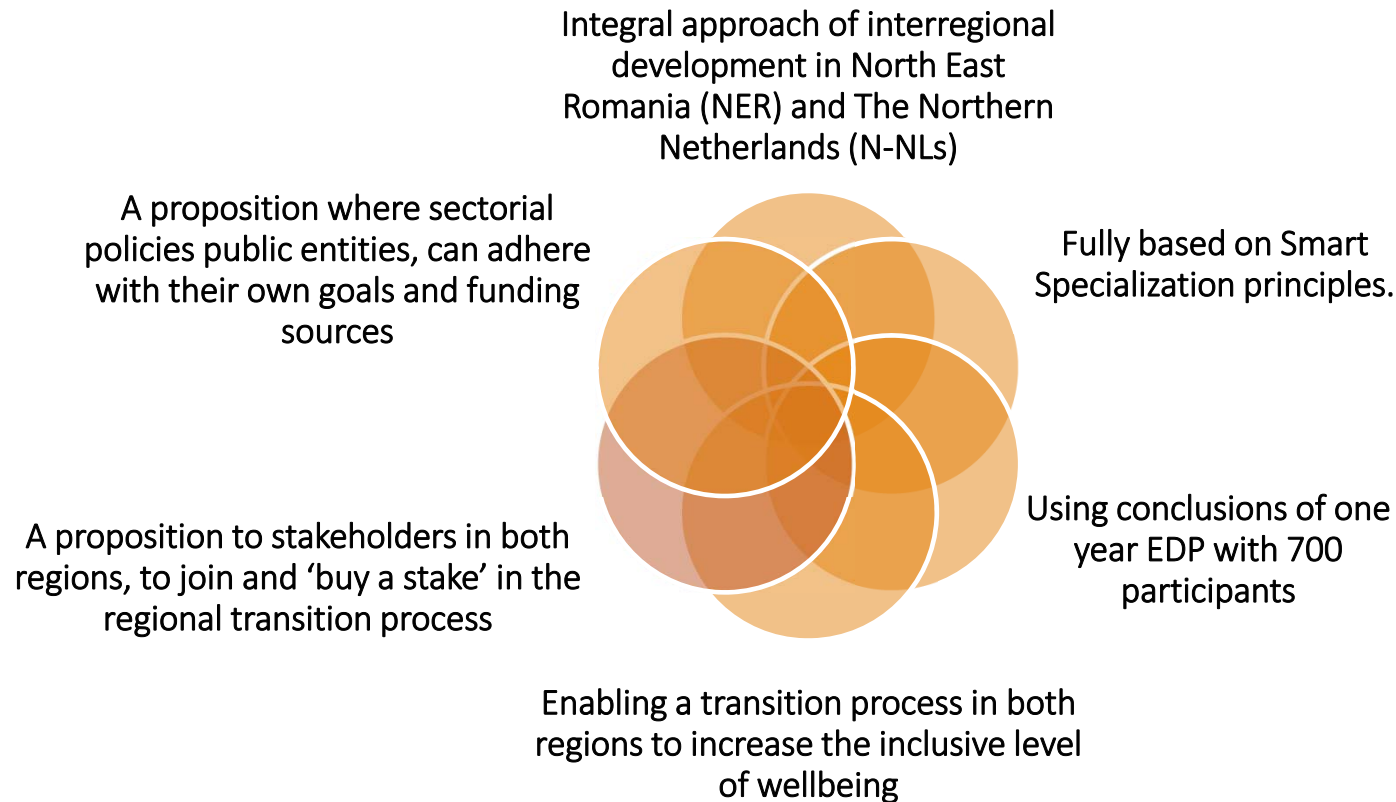


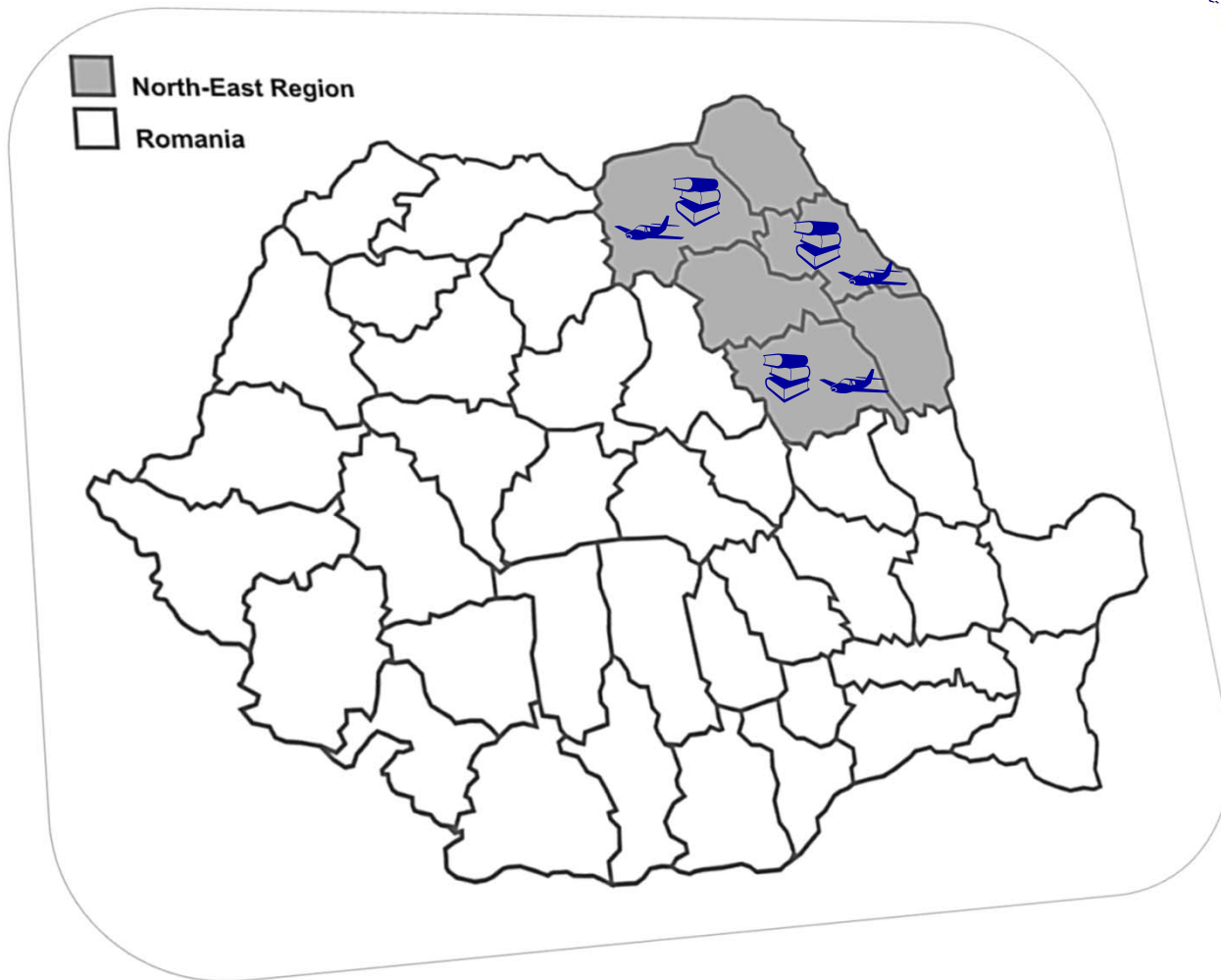
Northern Provinces  
of Netherlands



Ovidiu Savu | Bucharest, 21.11.2017

# Programming framework





**Surface: 36,850 square km**  
(17.6% of Romania's territory)



**Population: 3,302,217 inhabit.**  
(16.4% of Romania's total population)



**3 airports**  
(Bacau, Iasi, Suceava)



**3 academic centers**  
7 state universities  
4 private universities  
35 PhD schools (2016)  
(66,356 students)

**Regional GDP /inhabitant** – 4,619 Euro (2014),  
61.19% of GDP/inhabitant at national level;

**56,154 active enterprises** (2015) –  
(17.01 enterprises/1,000 inhabitants)

**Educated and qualified labor force** (41.7% high university degree - population aged 25-34)

# What challenges the partners found?

## North-East Romania is a region with

- high quality health care workers, but a health system based on outdated facilities and non efficient management, to which a large part of the society doesn't connect as an instrument for prevention and healthy living;
- high level university education, good research facilities, but with non-optimal connections with society or businesses, an educational environment where innovation and entrepreneurship are not on top of the agenda and where high level vocational training and education are still missing;
- good agricultural soil, human resources with expertise in the field, but with functional issues and limited vision over the potential overall return of agricultural investments towards society;
- main industries composed of a mix of traditional structures with critical mass and specialized sectors with fast growing newcomers in advanced technology areas, enterprises with competitive advantages and interest for innovation, but short term efficiency driven practices, lack of long run development vision and limited capabilities to interact with knowledge actors and apply their R&D results;
- economy with a high potential for self-sustained socio-economic systems, but with a low level of interconnectivity to generate and establish integrated value chains per category of products to ensure resource efficiency.

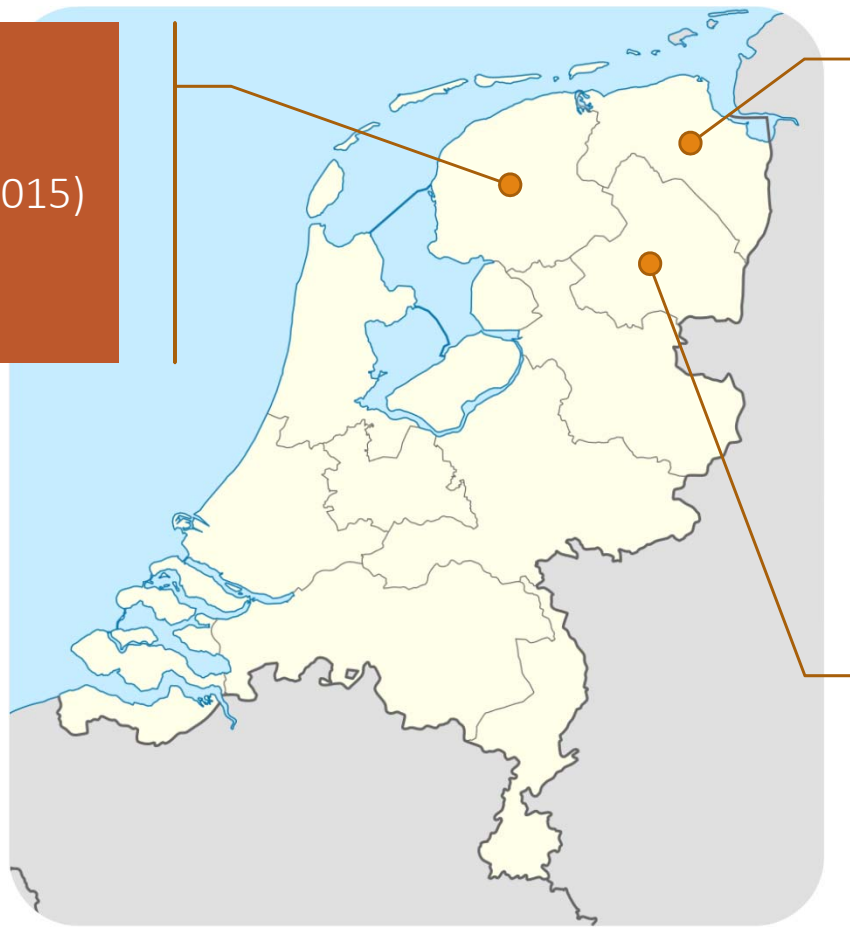
- **Province of Friesland**

Area: 3,349 km<sup>2</sup>

Population: 646,257 (Jan 1, 2015)

Capital: Leeuwarden

1 university



- **Province of Groningen**

Area: 2,960 km<sup>2</sup>

Population: 584,342 (Nov 2014)

Capital: Groningen

3 universities

- **Province of Drenthe**

Area: 2,683 km<sup>2</sup>

Population: 491,867 (Jan 1, 2017)

Capital: Assen

1 university

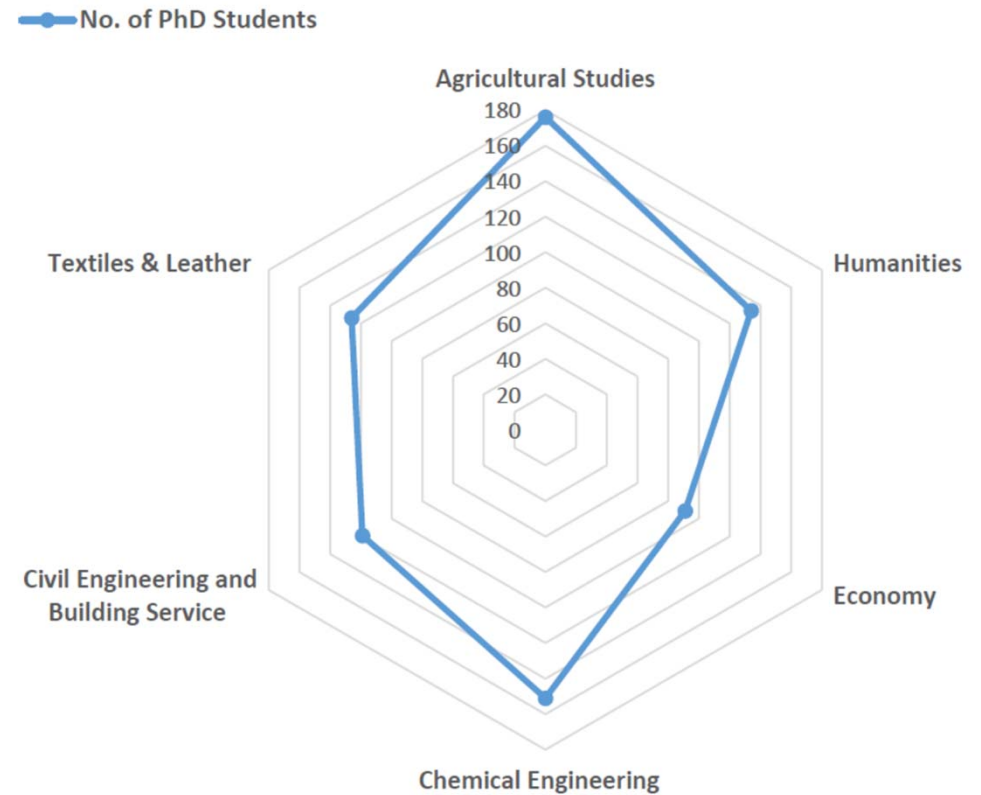
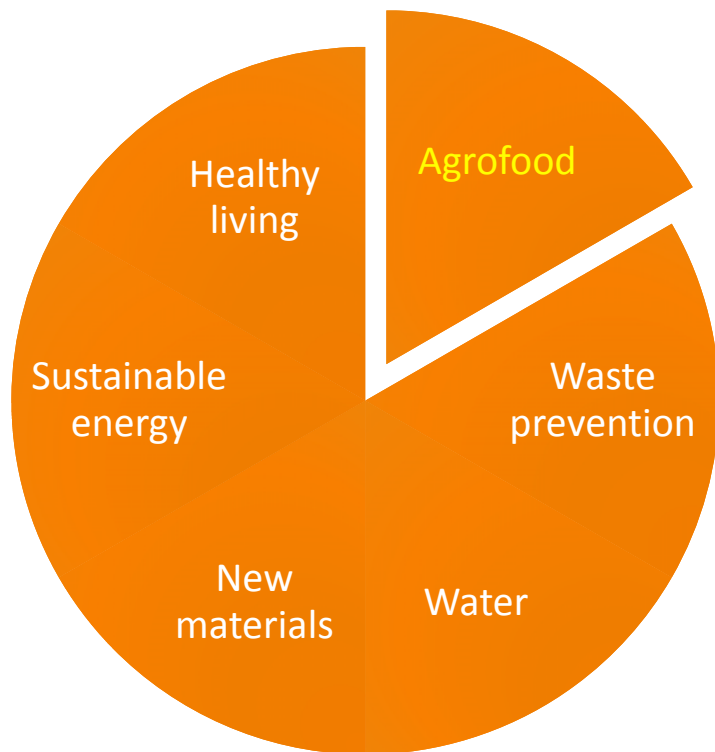
Northern Provinces of  
Netherlands – historically strongly tied provinces

# What challenges the partners found?

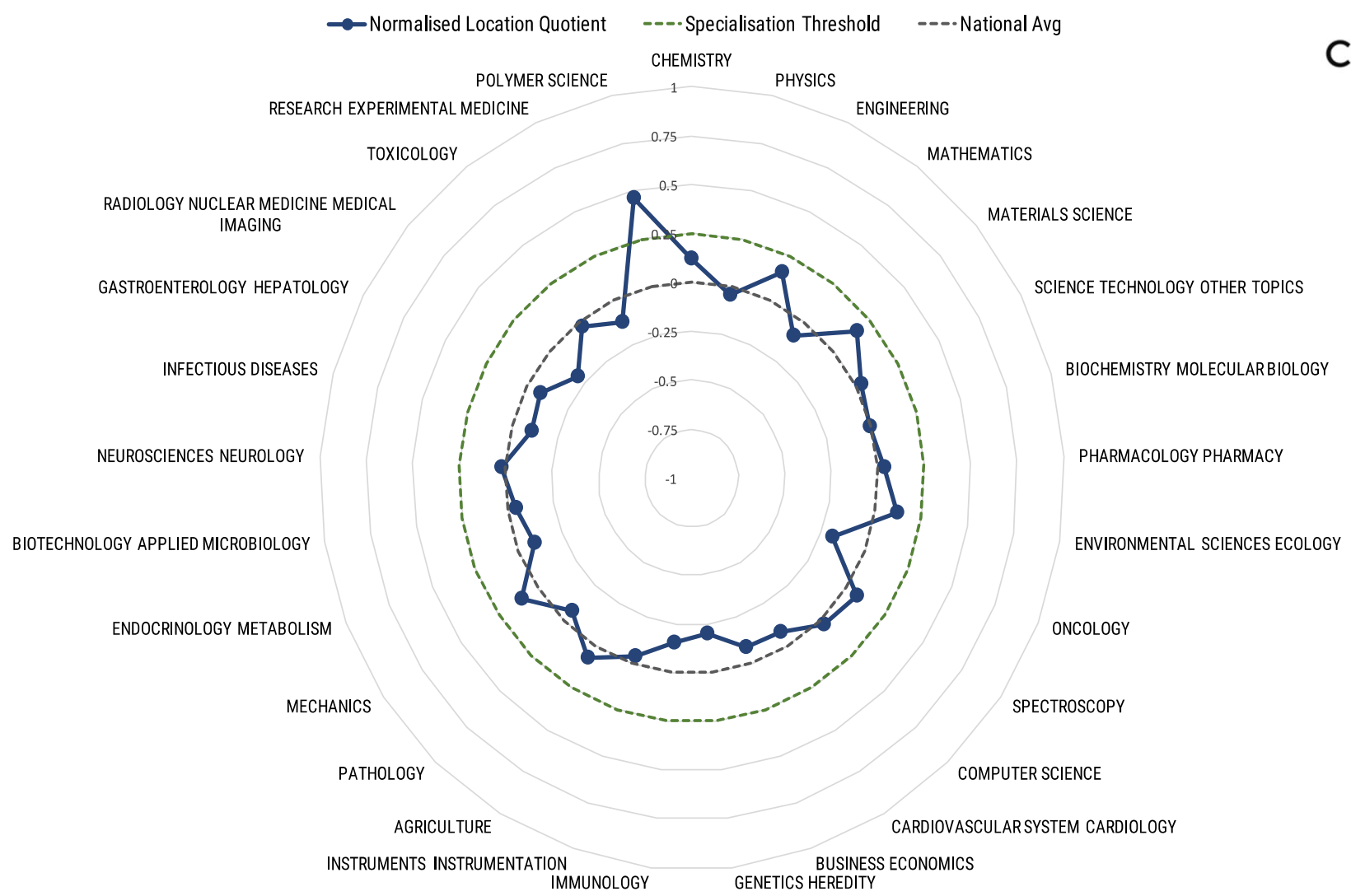
## Northern Provinces of Netherlands is a region with:

- an already existing and developed structure of innovative environments, but with inefficiencies in terms of full stakeholder involvement, with self interest predominance and short term vision for overall benefits from engaging with existing organizations;
- several strengths and potential for further development, but with missing links in value chains in various areas;
- a generally good quality educational system, but where particularly at mid level professional education shows serious deficiencies in terms of satisfying future labour market needs;
- particularly higher level professional education and research connects itself more and more to business and society and an outward looking attitude already predominant, but with yet, meagrely exploited potential for businesses to follow in its footsteps.

# Value chain assessment in both regions



Screening of High Education Institutions in NE Romania

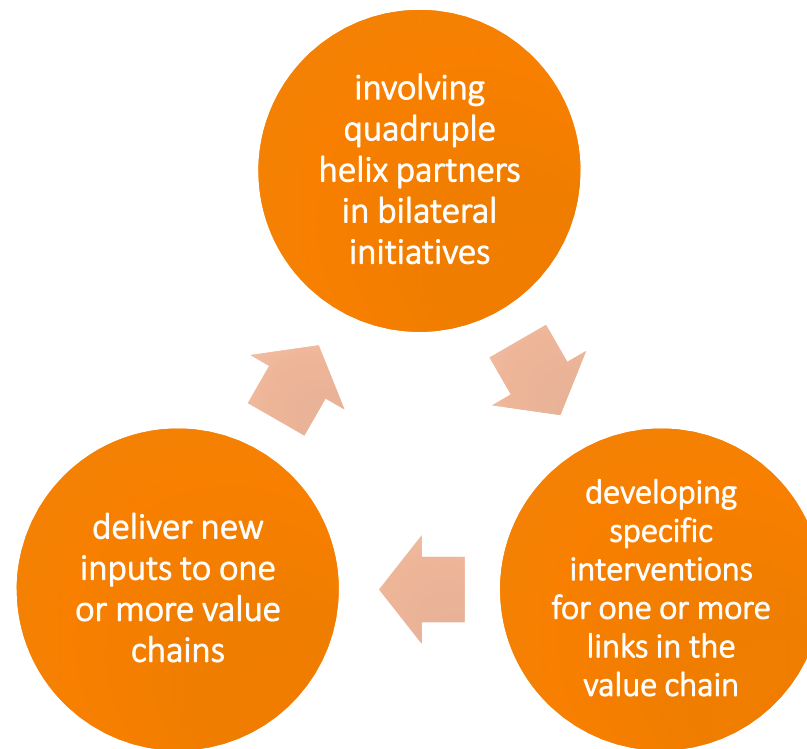


**Report on the regional TT Offer in NE Romania**



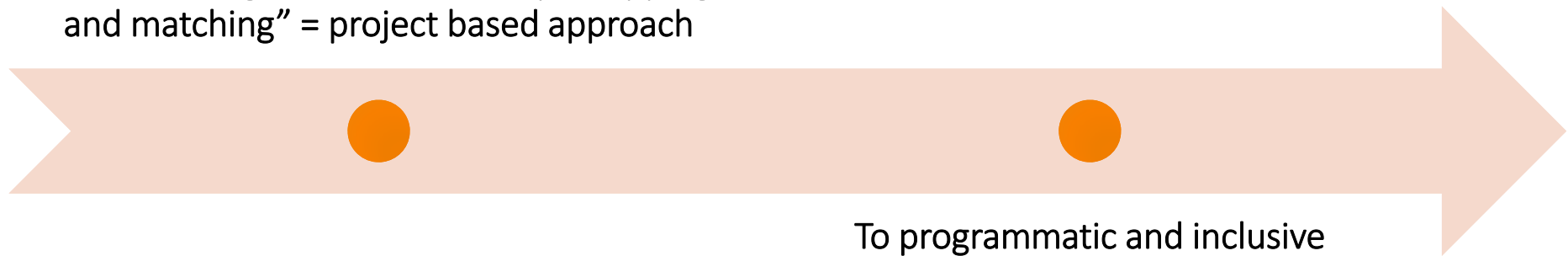


# 'Closing the loop' in each value chain



# Approach

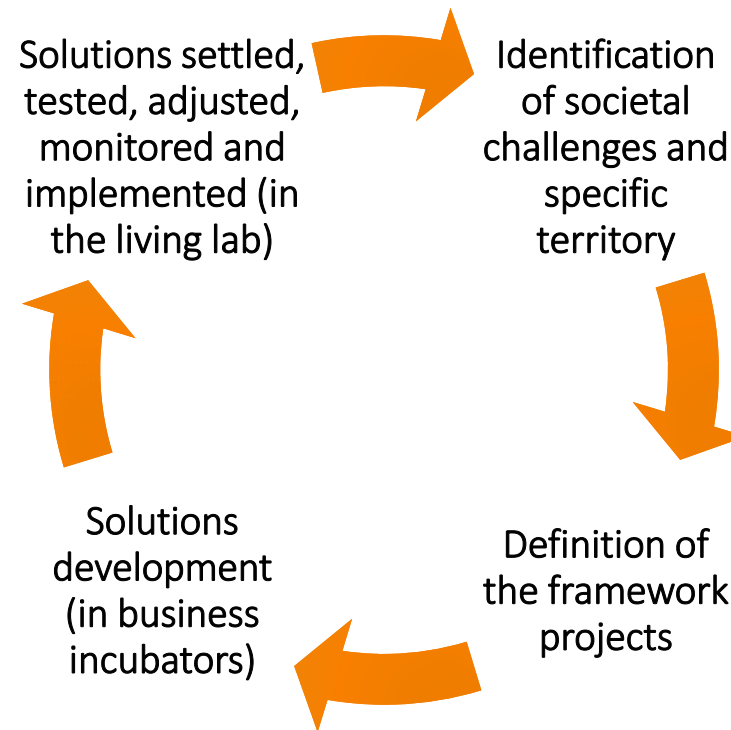
From working on value chains by “mapping and matching” = project based approach



To programmatic and inclusive approach, with strong framework projects = programming strategy and “innovative environments” = solution’s engine.



# How it works



# The framework projects

- strategically designed set of coherent and interrelated multi point interventions for a specific living lab
- connected to multiple incubators
- gives direction to the development process
- links the relevant value chains, via the incubators, to the challenges
- closes the loop in the value chain through proposed and applied solutions

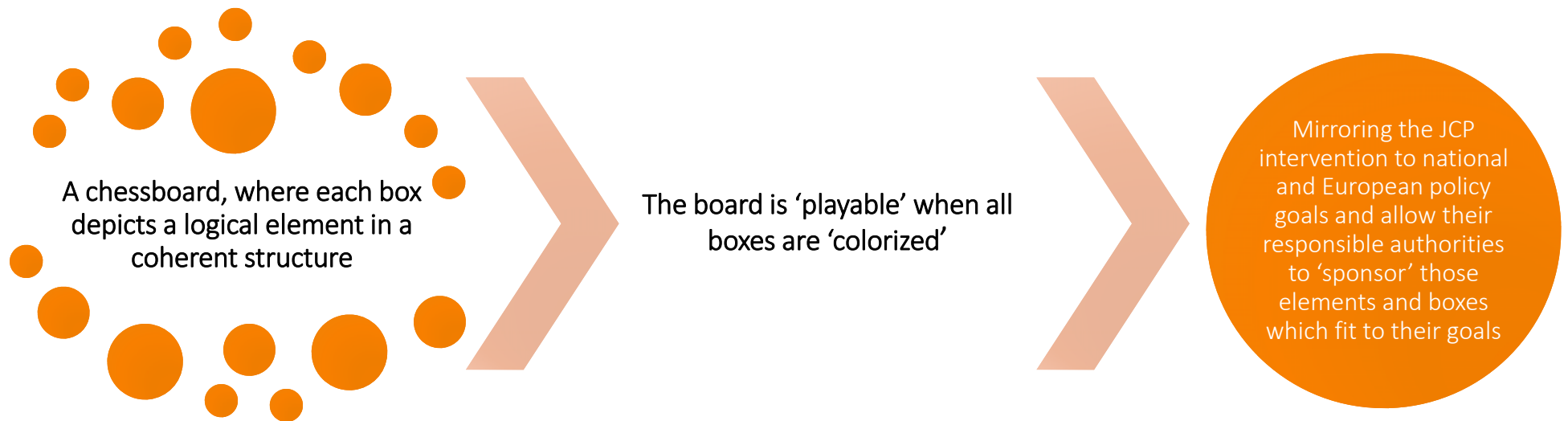
- ⚠ All solutions need to fit into each other and together form an integrated solution for an integrated set of challenges.
- ⚠ Transformation from a framework project into an 'operational project' is taking place 'along the way' as an 'iterative' process.

# Status: up to date

- Directly involved so far: RDA/SNN, univ of applied science, local public authorities, local action groups, business support organisations
- Resources: 5 Taixex Peer to Peer missions, own resources RDA/SNN
- Results:
  - Joint Entrepreneurial Discovery Process exercises based on JRC's methodology
  - Draft of Joint Programming Framework RIS3 Program Concept, reviewed by JRC and EC-DG Regio
  - 23 project fiches (NL promoters matching with RO RIS3 partners and viceversa)
  - Already partnering in 2 INTERREG Europe projects, 3rd call – under evaluation



# Funding





# CLUSTERIX 2.0

Interreg Europe



Thank you for your attention!

