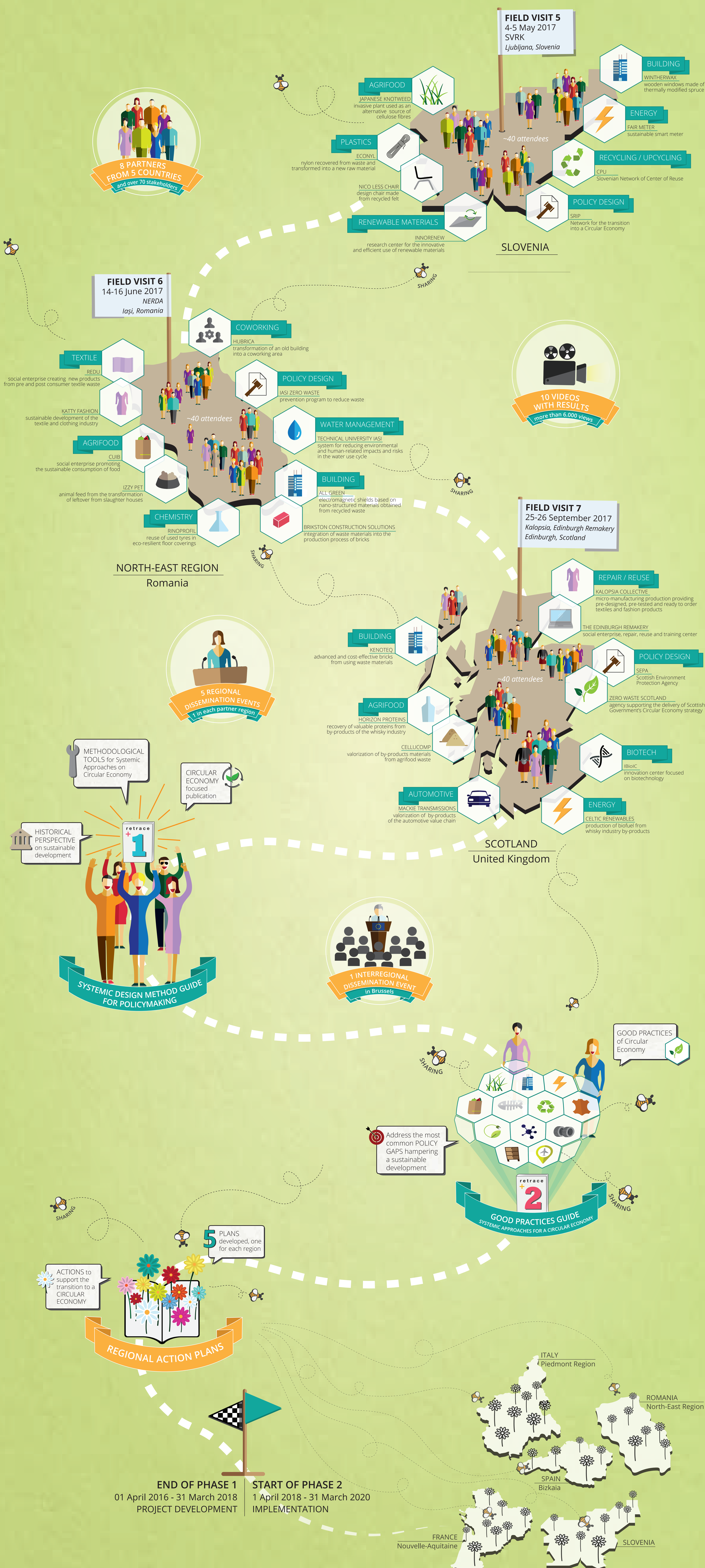


# 2 years of RETRACE

Interreg Europe

RETRACE - A Systemic Approach for Regions Transitioning towards a Circular Economy aims at promoting Systemic Design as a method allowing local and regional policies move towards a Circular Economy when waste from one productive process becomes input in another, preventing waste from being released into the environment.



follow the journey on [www.interregeurope.eu/retrace](http://www.interregeurope.eu/retrace)

YouTube #retrace #interregeurope



**Credits**  
Graphic design: Agnese Pallaro, Carolina Giraldo Nohra, Chiara Battistoni.  
Icons by: Hans Draiman, Curve, Michael Thompson, Aneque Ahmed, Fredrick Allen, Bence Bezeredy, andriwidodo, Guilhem, Royyan Wijaya, Thomas Helbig, Cono Studio Milano, misirfou, Adrien Coquet, asianson/design, sandra, Creative State, AlfredoCreares.com, Adrien Coquet, Nicholas Mergolini, Giselle Pereira, Adrien Coquet, Anabela Adalero, Edward Boatman, Royyan Wijaya, Baena Buena, Gillian Arhoff, H. Alberto Gorgora, unimicon, Milla Kozin, Creative State, Unrecovered W, Hoi Pui Lin, Kinosh Sudo, Guilhem, Cono Studio Milano, Francis Janssen / Popoff, Peino Karaman, Julia Simoes, Diego Navas, Dinosh Labs, Yuliana Bolech, Nick Abrams, akhmalwaja, Adrien Coquet, Giustina Valentini Gentile, KEN MURRAY, John Caserta, Icon Island, Gan Khoon Lay, Sascha Elmers, Made by Made, Mello, Milena Zanotelli, Alex Muravev, Marco Ricci, Fabio, Gregor Cresnar, Mr. Mivui, Martina Krasnyova, Fahmhorizon, Istapark, Aybige, Ratan, Yazmin Alaniz, Prune Art, anberlu adalero, Gan Khoon Lay, Pham Thi Dieu Linh, Matt Wasser.