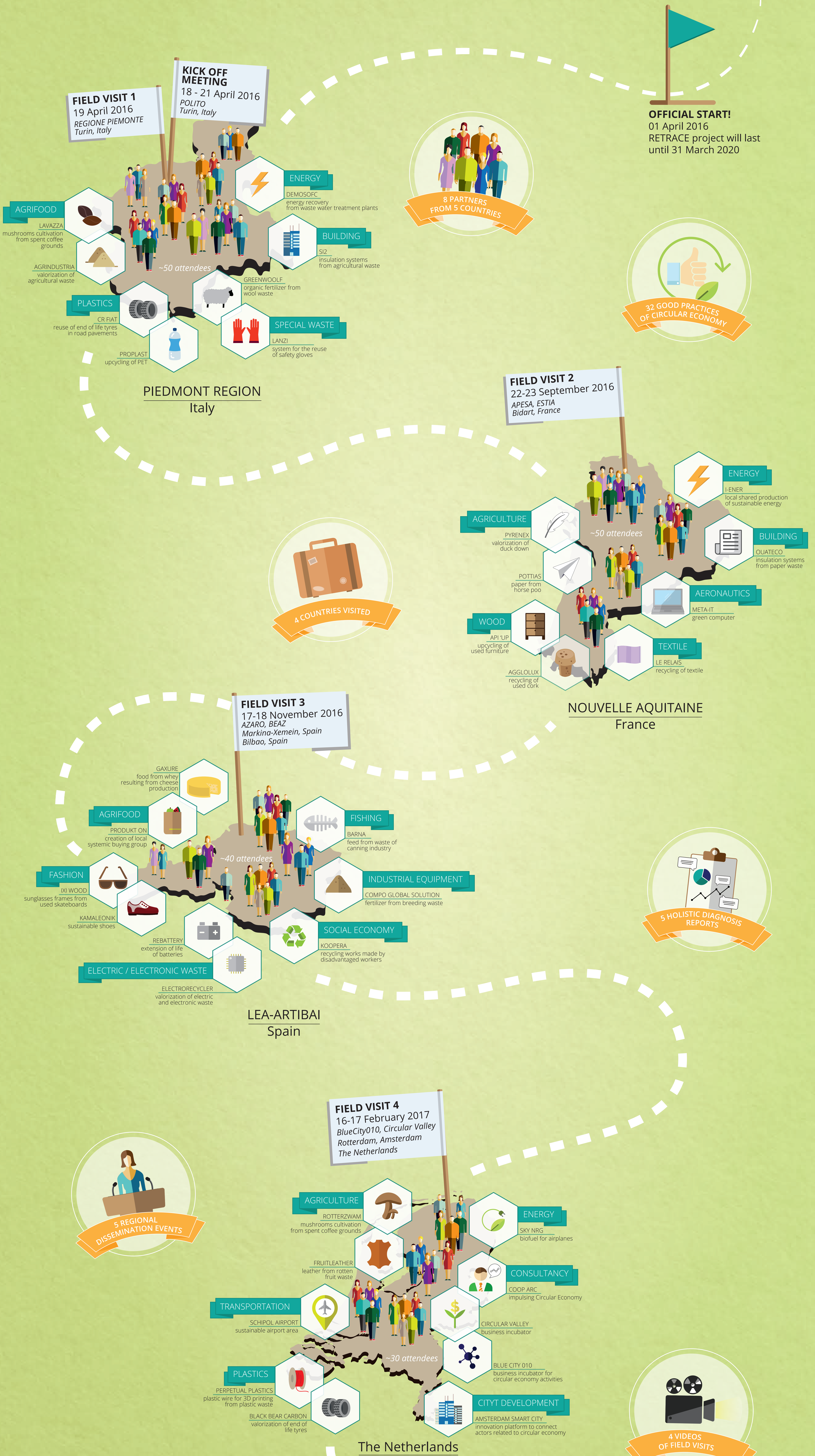


1 year of RETRACE

Interreg Europe

RETRACE - A Systemic Approach for Regions Transitioning towards a Circular Economy aims at promoting systemic design as a method allowing local and regional policies move towards a circular economy when waste from one productive process becomes input in another, preventing waste from being released into the environment



follow the journey on

www.interregeurope.eu/retrace

YouTube #retrace #interregeurope

Project partners



Credits

Graphic design: Agnese Pallaro, Carolina Graldo Nohra, Chiara Battistoni. Icons by: Hans Dramann, Curve, Michael Thompson, Frederik Jansen, Benne Boerney, andriawidodo, Guithem, Rogyan Wijaya, Thomas Hebig, Cono Studio Milano, Inadifou, Adrien Coquet, zassanov.design, sandra, Creative Stall, AlfredoCreatives.com, Adrien Coquet, Nicholas Menghini, Giselle Pereira, Adrien Coquet, ambleru adaleru, Edward Boatman, Rogyan Wijaya, Buena Buena, Dillon Airoff, H Alberto Gargara, unimicon, Nikita Kozin, Creative Stall, Unrecognized MJ