



Gemeente Utrecht

### | City of Utrecht (NL)

With its 340,000 citizens, Utrecht is the 4<sup>th</sup> city in the Netherlands and the fastest growing city in the country. It promotes cycling and walking as a safe and fun way to get to school.



Gävle  
KOMMUN

### | Municipality of Gävle (SE)

Gävle is a city with 100,000 inhabitants, situated north of Stockholm by the coast. The city is the logistic hub for central Sweden with good transport and communications infrastructures.



GDANSK

### | City of Gdansk (PL)

Gdansk, an important historical city with great aspirations for quality of life improvement; open to people, new ideas innovations and active mobility solutions.



BRASOV  
METROPOLITAN  
AGENCY  
FOR SUSTAINABLE DEVELOPMENT

### | Brasov Metropolitan Agency for Sustainable Development (RO)

Brasov Metropolitan Agency for Sustainable Development is part of the Transylvania region and includes the municipality of Brasov and 17 other nearby communities.

## Project at a glance



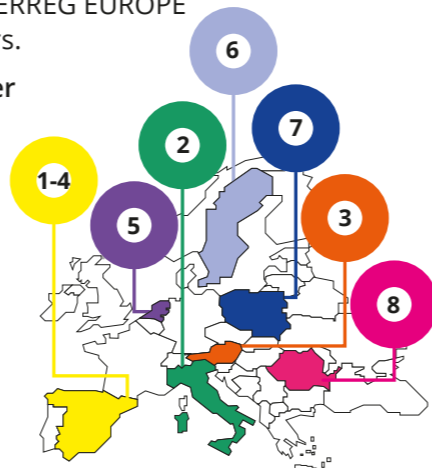
### THEME

Low-carbon economy

## Partners

SCHOOL CHANCE is co-funded by the INTERREG EUROPE programme and is composed of 8 partners.

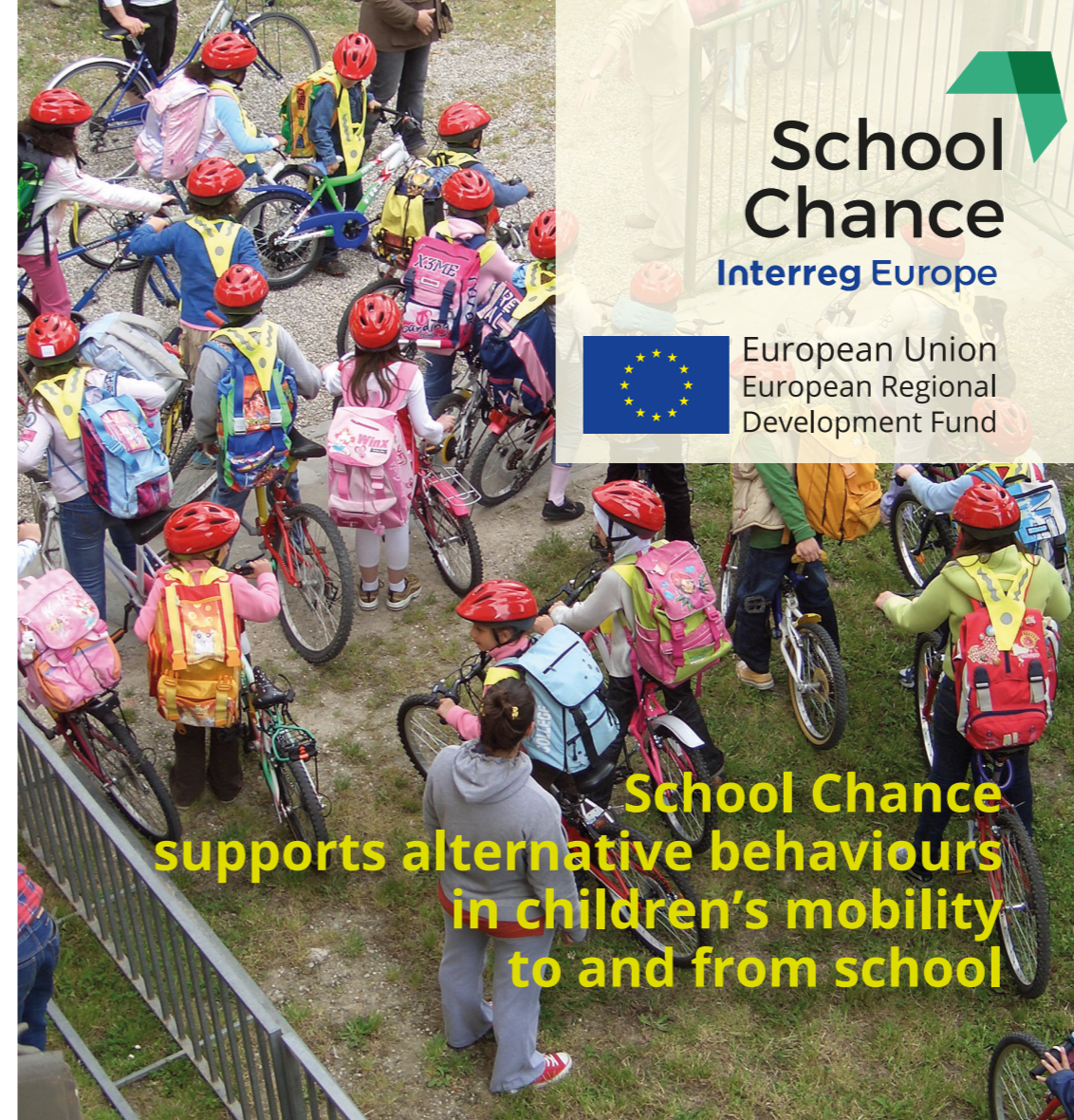
- 1) Municipality of Girona (ES) - lead partner
- 2) Municipality of Reggio Emilia (IT)
- 3) Austrian mobility Research, FGM-AMOR (AT)
- 4) Regional Government of Cataluña (ES)
- 5) City of Utrecht (NL)
- 6) Municipality of Gävle (SE)
- 7) City of Gdansk (PL)
- 8) Brasov Metropolitan Agency for Sustainable Development (RO)



## For further information

[www.interregeurope.eu/resolve/](http://www.interregeurope.eu/resolve/)  
[facebook.com/SchoolChance](https://facebook.com/SchoolChance)  
[twitter.com/SchoolChance](https://twitter.com/SchoolChance)

Municipality of Girona - lead partner  
Maria Mercedes Teixidor  
[mteixidor@ajgirona.cat](mailto:mteixidor@ajgirona.cat)



# School Chance

## Interreg Europe



European Union  
European Regional  
Development Fund

**School Chance  
supports alternative behaviours  
in children's mobility  
to and from school**

## Partners



### Ajuntament de Girona | Municipality of Girona (ES) - lead partner

It is a medium-sized city in the north-east Spain, signatory of the Charter of Educating Cities, engaged in sustainable mobility policies for everyone.



### Comune di Reggio Emilia | Municipality of Reggio Emilia (IT)

Reggio Emilia, a medium-sized city in northern Italy rich in history and culture, from over 10 years is active in promoting sustainable home-to-school travels.



austrian mobility research

### | Austrian mobility Research, FGM-AMOR (AT)

It is one of Europe's leading companies in the field of mobility research. It has 25 years of experience in mobility marketing, travel awareness and policy analysis.



Generalitat de Catalunya  
Departament de Territori  
i Sostenibilitat

### | Regional Government of Cataluña (ES)

The Ministry of Territory and Sustainability is the department of the regional Government of Catalonia responsible for implementing mobility policies.

## About School Chance

School Chance is a five-year European project funded under the Interreg Europe Programme 2014-2020. Its focus is the development and exchange of policies that support **cleaner transport modes** and promote alternative behaviours in **children's mobility** to and from school.

The **objective** is to **reduce carbon emissions** by finding innovative and coordinated ways to systematically address the four most pressing challenges in the development and implementation of school mobility policies: information, education, promotion, infrastructure.

**Eight partners** from Spain, Italy, Austria, the Netherlands, Sweden, Poland and Romania will work together to develop a strategy for making sustainable mobility at school an essential element of their policies and for increasing sustainable mobility by changing the behaviour of schoolchildren and the next generation's mind-set towards it.

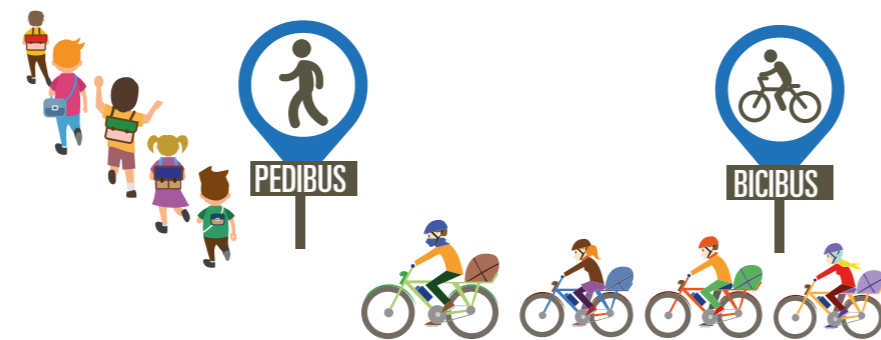
## Objectives

- ▶ **promote** an overarching approach to **school mobility** and make **regional and local authorities** and schools working together to **coordinate policies** and actions;
- ▶ **reduce carbon emissions** generated by school travels;
- ▶ **decrease dependence** on **cars** and create a safer and more pleasant environment around schools by removing perceived and actual barriers to walking and cycling;
- ▶ **raise awareness** on the **benefits** of sustainable home-school transport among students, teachers and parents;
- ▶ **increase** the number of students choosing **active travel options**;
- ▶ **create synergies** between different sources of fundings, with a particular focus on ERDF Structural funds, to **make the most** of all the **available resources**.

## The Process

The cities and regional governments of the consortium will learn from each other how to encourage safe, healthy, autonomous and sustainable travel to school. This will be done by a **constant interregional learning process** with different activities, such as study visits, thematic trainings and transfer workshops, and by **identifying shared solutions** to common issues.

After the exchange of good practices on school mobility management, **partners** will **transfer measures at local level** through Regional Action Plans. During the second phase of the project partners will put the lessons learnt to **implementation**, which will be constantly monitored in the final 2 years of the project.



- 8 PARTNERS
- 4 TOPICS
- 40 GOOD PRACTICES
- 4 THEMATIC TRAININGS
- 7 STUDY VISITS
- 6 REGIONAL ACTION PLANS

## Innovative Character

- ▶ **linking policy instruments** with **school mobility**, a source of carbon emission not always adequately recognised in policymaking;
- ▶ **ensuring coordination** and coherence at **regional level** and generating synergies between operational activity and policies;
- ▶ building a **permanent network of stakeholders** working together to reduce carbon emissions;
- ▶ creating a **benchmark approach** for **school mobility** with different mutually reinforcing actions;
- ▶ developing a **methodology** to generate **investment in infrastructure** and specific school mobility programmes.

