



Partner meeting

15th – 17th May 2018

Milan, Lombardy Region

Rural Metropolitan Area of Milano

The Milano Metropoli Rurale Agreement (AQST)

Anna Rossi
Struttura Progetti per lo Sviluppo dell'Area Metropolitana e del Post-Expo
Direzione Generale Presidenza





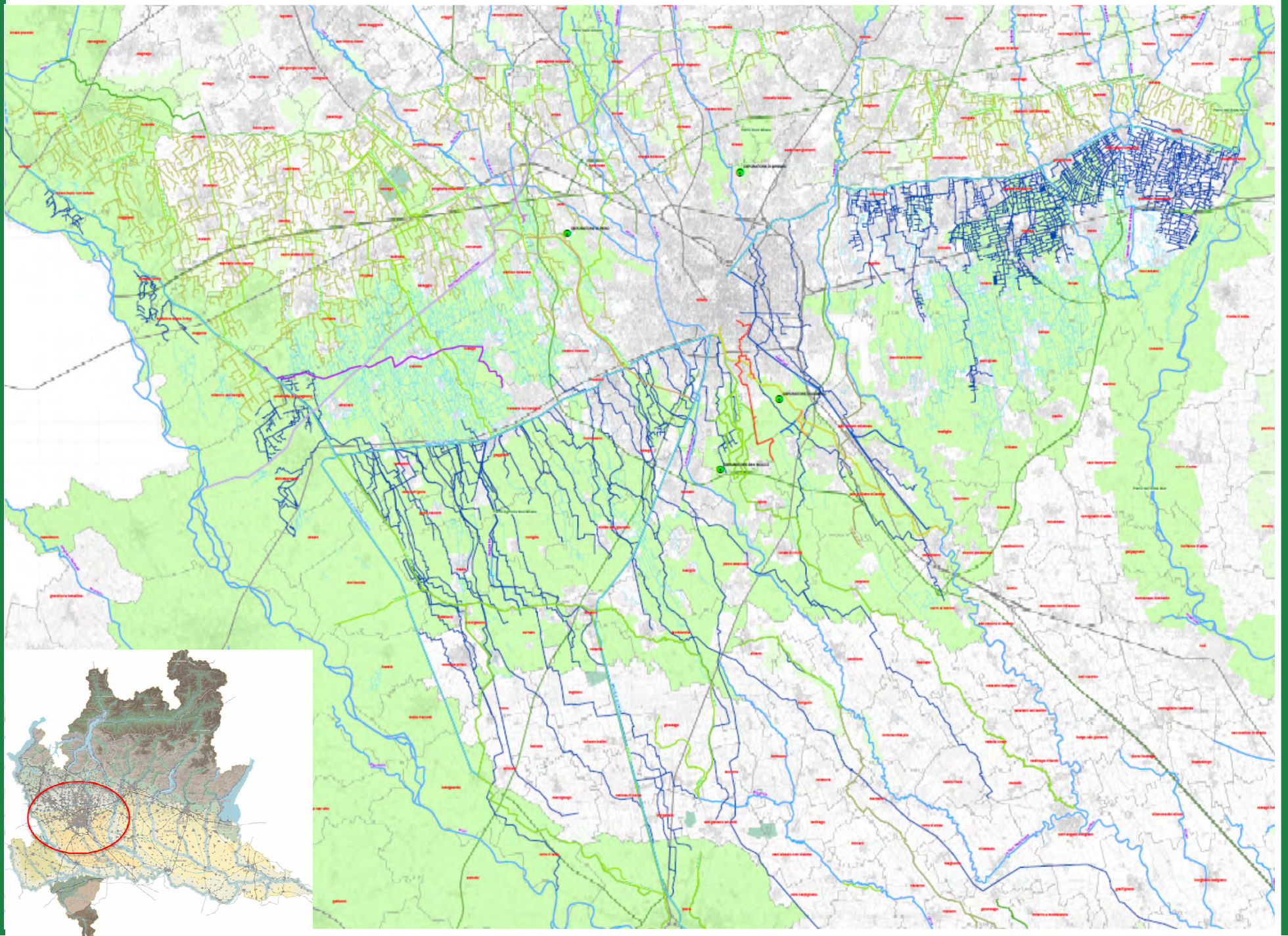
Milano Metropoli Rurale AQST is an official agreement for local development focused on the reinforcement of the rural matrix of the metropolitan area of Milano.

The Metropolitan City of Milano is one of the European more relevant urbanized areas but it was/is one of the more fertile ones too.

The hydrographic system is an important historical asset of this land.

To define new sustainable modalities to balance urban and rural development is a current challenge and a big opportunity for the future.





What is AQST

AQST is an institutional agreement for local development considered by a regional law (l.r. 2/2003).

Main AQST elements are:

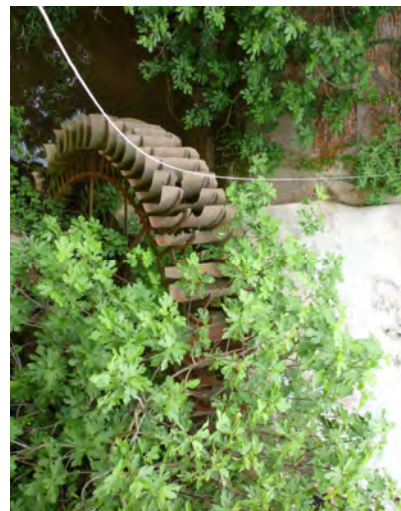
- Public-private partnership
- Definition of thematic/territorial objectives
- Definition of a shared and coordinated Action Plan (Operative activities)
- Enhancement of local proposals
- Flexible and open agreement, it can involve new partners and new operative activities in its development

Milano Metropoli Rurale



Milano Metropoli Rurale AQST is focused on:

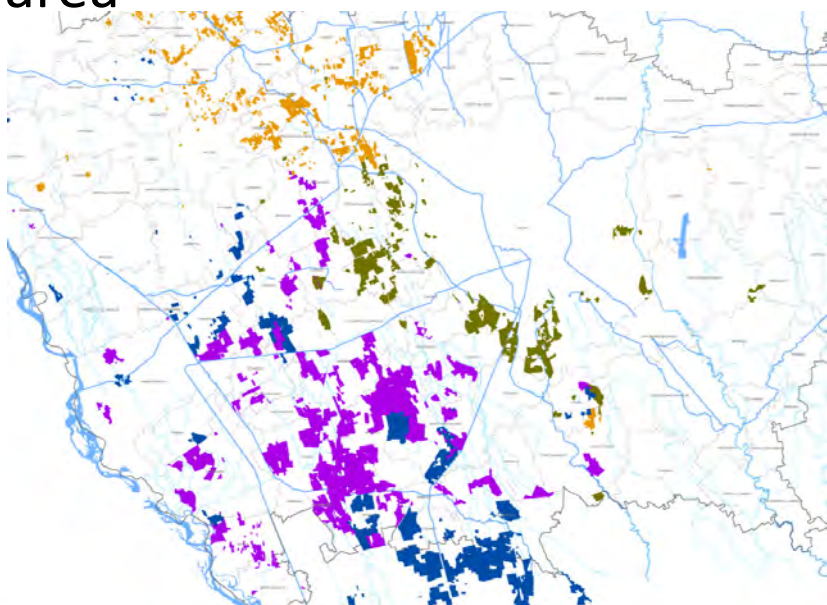
- a specific territorial dimension, the Milano metropolitan area that goes beyond Città Metropolitana borders
- a specific thematic area Rural Matrix by a particular attention to the farms system valorization (Rural Districts)





Partnership

The agreement involves public administrations, rural districts (Distretti rurali), irrigation authorities in order to coordinate their efforts so to enhance the different perspectives of this rural area



- Regione Lombardia
- Città Metropolitana di Milano
- Comune di Milano

- Consorzio Est Ticino Villoresi
- Consorzio del Fiume Olona

- Distretto Rurale DAM
- Distretto Rurale DAVO
- Distretto Rurale DINAMO
- Distretto Rurale Riso & Rane
- *Distretto Rurale DAMA*

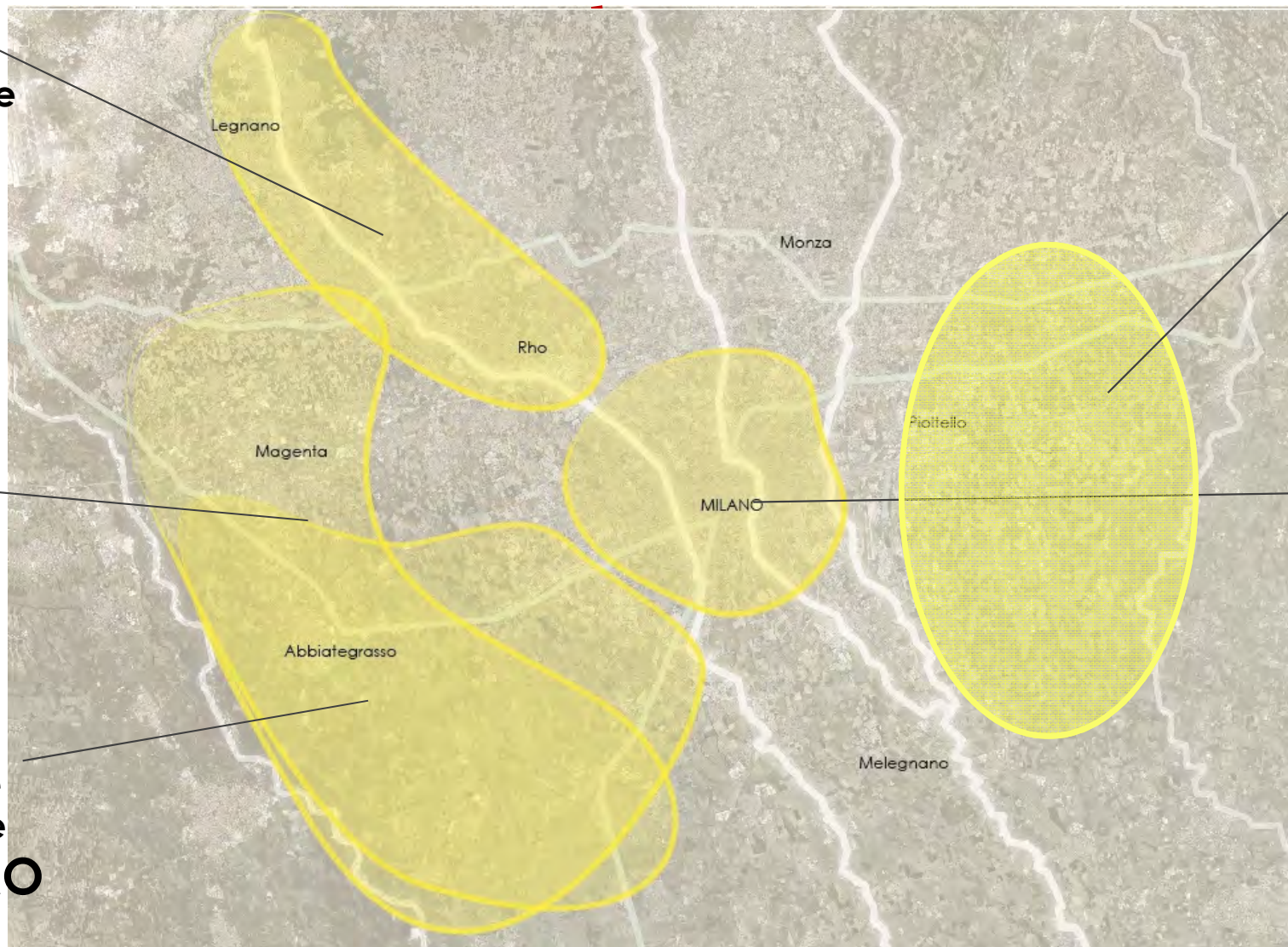


CURRENT OFFICIAL RURAL DISTRICTS

Distretto rurale della Valle del Fiume Olona
DAVO

Distretto Rurale Riso e Rane

Distretto Neorurale Tre Acque
DINAMO



Distretto Rurale
DAMA

Distretto Rurale Milanese
DAM



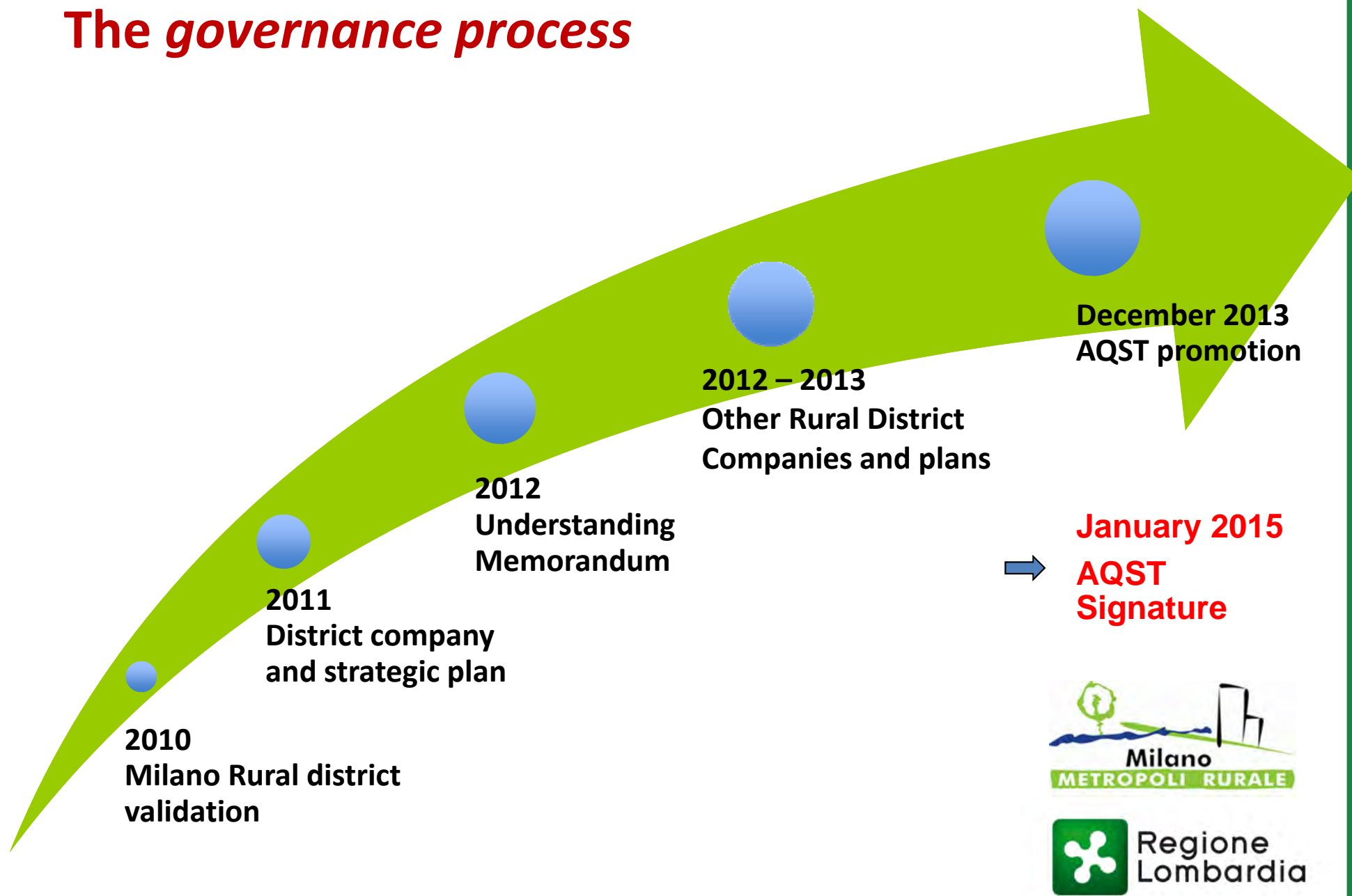
Regione
Lombardia

The Governance process

- The debate about Milano Metropoli Rurale started in 2010 with the Milano Rural District validation and the following definition of the district strategic plan (the Milano Municipality is an important land owner, it owns many historical farms, ten ones still used for agriculture and rented to farmers)
- The debate and the process developed in the following years involving other Rural Districts/partners of the metropolitan area
- From 2013 to 2015 the process towards the regional AQST definition and signature involved the Interreg Alpine Space Programme project RURBANCE (for a balanced development of the relation between rural and urban areas) where Regione Lombardia was partner



The governance process



Objectives

The strengthening of rural system and matrix is considered a strategic tool to define a more durable and sustainable model of urban-rural development.

The main objectives:

- the soil consumption limitation;
- the integration of farming production with the multifunctional activities, environmentally sustainable, in order to answer to new local demand of good food, energy, landscape, natural ecosystem services ..;
- the progressive diversification of the agriculture activities and potential synergy with other economic sectors/industries;
- the limitation of territory degradation trend and the safeguarding of the rural heritage with its different topics: cultural landscape, soil, biodiversity ...;
- the strengthening of the different features/peculiarities of the urban-rural territory and the improvement of the relation between rural and urban areas.



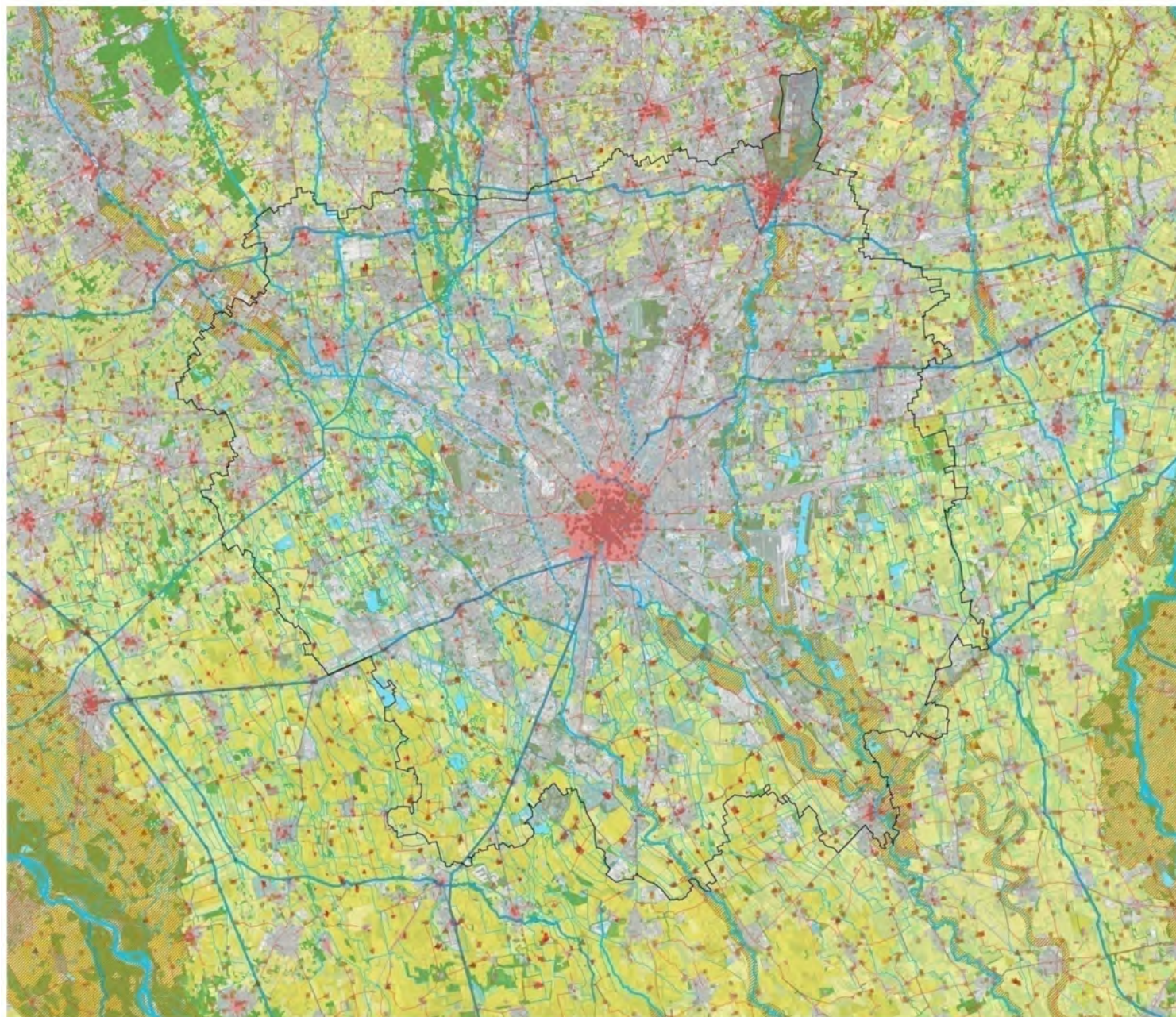
Milano Metropoli Rurale Tools

Milano Metropoli Rurale AQST includes two tools aimed to guide the implementation of the agreement:

- A shared strategic Scenario
- The Action Plan



RURAL MATRIX OF THE METROPOLITAN SETTLEMENT OF MILANO: BASIC ELEMENTS



-  ambito metropolitano milanese
-  valli fluviali
-  fiumi
-  corsi d'acqua
-  corsi d'acqua tombinati
-  fontanili
-  laghi, specchi d'acqua
-  navigli, canali
-  tracciati territoriali storici
-  tracciati locali storici
-  centri e nuclei storici
-  abbazie
-  grange
-  beni di interesse storico
-  mulini
-  manufatti idraulici di interesse storico
-  cascine, insediamenti produttivi agricoli
-  allevamenti
-  agriturismi
-  fattorie didattiche
-  colture legnose e pioppeti
-  colture floro-vivaistiche, orti
-  seminativi, risaie, marcite
-  prati permanenti
-  siepi e filari
-  boschi e formazioni ripariali
-  imboschimenti recenti
-  vegetazione arbustiva e rada
-  vegetazione delle aree umide e delle torbiere
-  parchi e giardini



Axes of the Action Plan:



1. Consolidation/improvement of the irrigation canal system
2. Restoration/enhancement of the natural environment and the rural landscape
3. Improvement of the rural estate (considering both building heritage and farms infrastructures)
4. Innovation of product, process and supply chain
5. Multifunctionality (ecosystem, social, tourist services)
6. Promotion/increasing value of the rural cultural heritage
7. Strengthening of the strategy for an urban-rural balanced development







First results



At the moment, 1/4 of plan activities are closed and about 1/2 are in progress.

The best performances:

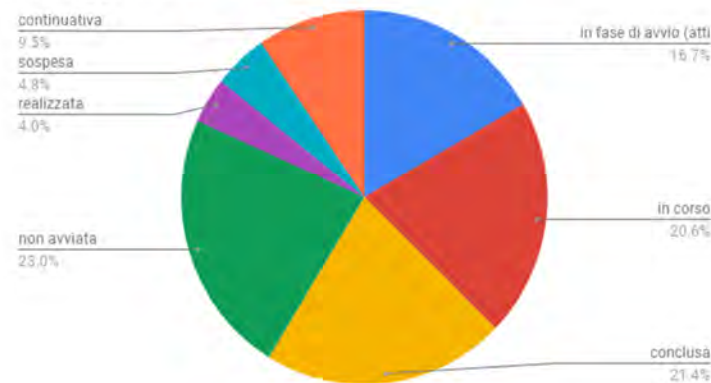
- landscape and environment enhancement, with 24 project completed

As well, good results have been achieved by:

- promotion of farms products (market, large-scale retail trade, food service ...)
- pilot actions to improve irrigation system and to preserve water
- rural building restoration and renovation plans
- multifunctional proposals and innovation projects



Conteggio di stato avanzamento



Next expected goals



Main activities should be stressed for the coming years:

- renovate and improve irrigation system (canals and water supply)
- promote local products to supply food services
- innovate farms production
- develop leisure activities and touristic potentialities



Main difficulties:

- Funding
- Time needed to plan and design
- Complexity of coordination
- Visibility



Work in progress



New actions to ease the agreement implementation:

- reinforce synergies among AQST Action Plan, regional policies and public strategic/operative plans
- arrange more thematic technical groups, open to experts and stakeholders, to discuss and compare project ideas
- share, compare and observe other experiences by particular attention to EU cooperation projects : RUMORE, INNOGROW, OPENAGRI, SWARE
- improve funding knowledge and capability to use EU funds
- develop a better coordinated communication starting from the specific web-site: www.milanometropolirurale.regione.lombardia.it



Conclusion

Above all, Milano Metropoli Rurale is a laboratory.

It's the place where public bodies, irrigation authorities and farmers can:

- work together
- integrate different knowledges
- research synergy between different action levels
- meet many stakeholders, experts and EU Project

AQST Strenght:

- large-scale and long-term point of view with a particular focus on innovative practices and operative tools
- open and flexible approach



Thank you for your attention!

www.milanometropolirurale.regione.lombardia.it

contact: milanometropolirurale@regione.lombardia.it

