



Amsterdam

Greening school playgrounds in Amsterdam

Amsterdam Impulse School playgrounds (AIS)

Erik Disch
E.Disch@amsterdam.nl
Projectmanager AIS
Project Management Department

5 juni 2018

PERFECT 
Interreg Europe

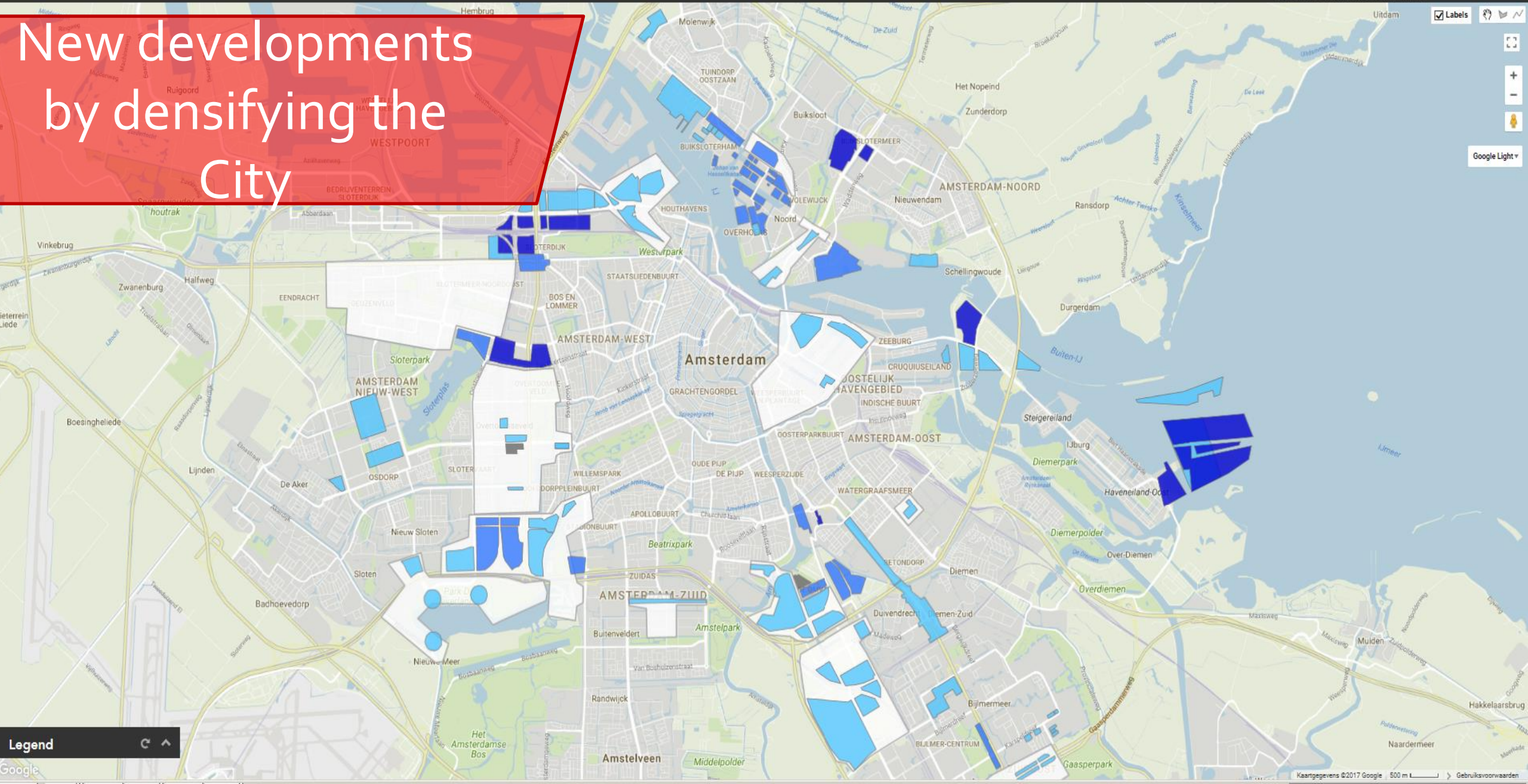




Amsterdam is facing
a big challenge



New developments by densifying the City



Greening school playgrounds in Amsterdam



How can we make the most of the increasingly limited opportunities for green infrastructure in Amsterdam?



Amsterdam
Impulse School
playgrounds
(AIS)



Ensure schoolyards
once again become
real playgrounds






We offer

- Grant for 70 playgrounds
- €70.000,- grant per playground
- Guidance in application

(Re)Design School playgrounds


Starting points



Green



Rain-proof




Educa-tion



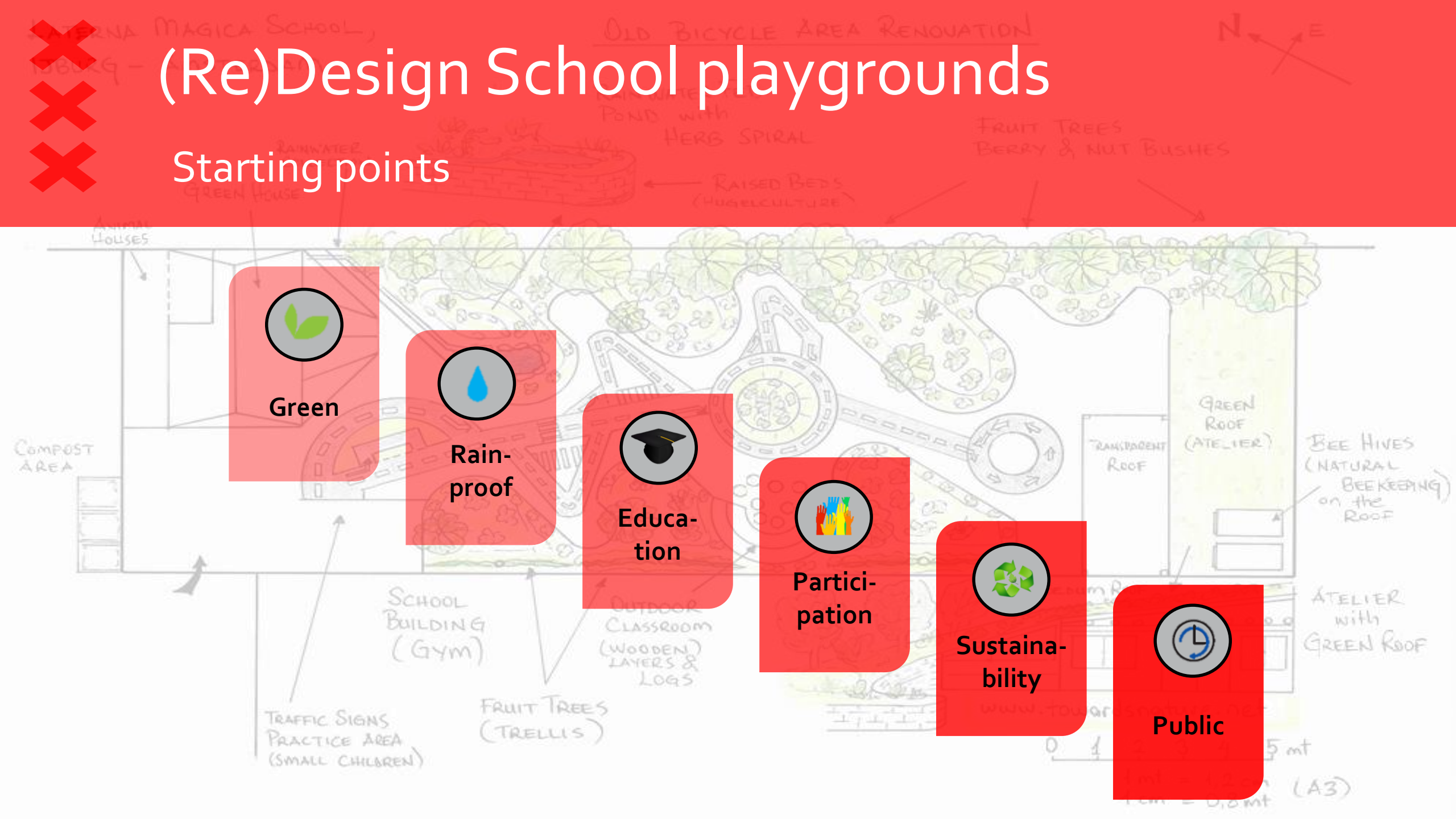
Partici-pation



Sustaina-bility



Public



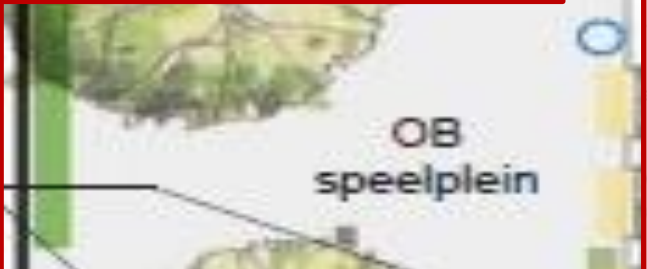
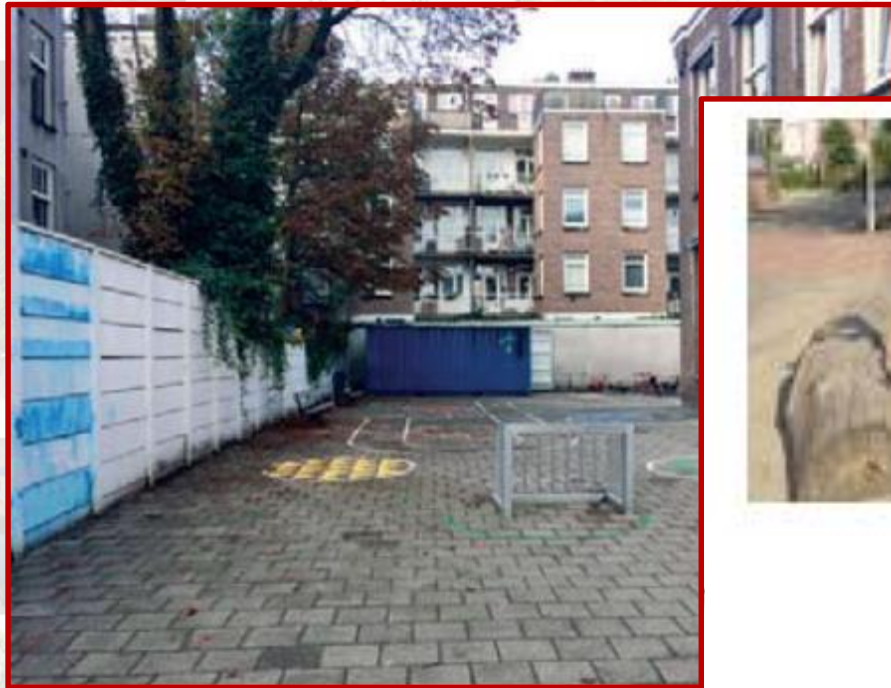


Traditional school
playgrounds...





Example 1: Annie M.G. Schmidtschool



daktuin op container
zuidhoek is in de schaduw
ideale plek voor de container met
de fietsjes

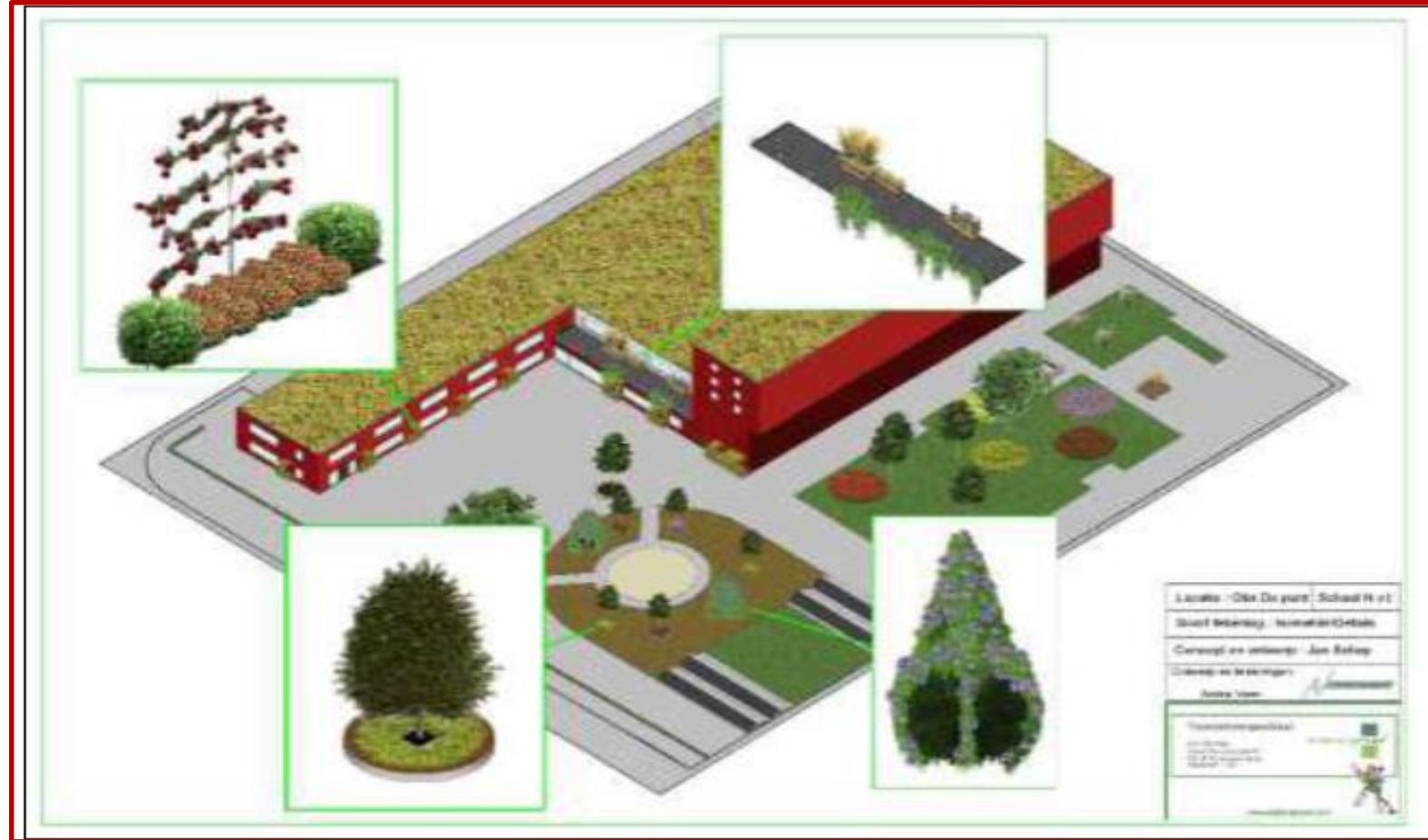


7. kleuter speeltuintjes

nieuwe speel bosje
geschilderde cirkels vervangen door lage plantenbakken
(hoogte van kleuterbankjes, als stootbumper tijdens het fietsen)
inheemse planten en bloemen



Example 2: De Punt





Example 3: Koetsveldtschool





Trends

Green to:

- learn from
- play with
- eat





Overzichtskaart Amsterdamse Impuls Schoolpleinen

december 2017



Legenda*

- scholen 1e tranche
- scholen 2e tranche
- scholen 3e tranche
- Focusbuurt AAGG 2016
- m2 nieuw ingerichte schoolpleinen
- m2 extra (semi) openbare speelruimte
- speelruimte niet openbaar
- m2 extra groen in de stad
- m2 minder verharding
- Score Rainproof
- XXX aanvraag door Bestuurscommissie

* Uitgebreidte toelichting symbolen in de documenten 'Resultaten AIS en toelichting'.

Results so far (1)



77.000 m² green, attractive and safe playgrounds established with AIS



30.840 m² extra (semi) public playgrounds



19.200 m² extra green space added to the city



20.240 m² less pavement in the city



50 non-smoking playgrounds



The background image shows an outdoor school garden. In the foreground, a wooden bench sits on a grassy area. Two young girls are sitting on the bench; one is wearing a light blue shirt and jeans, and the other is wearing a denim vest over a white shirt and jeans. Behind the bench is a raised garden bed with a stone border, containing various green plants and purple flowers. In the background, a large group of children and adults are gathered on a grassy slope, some holding hands. A red semi-transparent banner is at the top of the image, containing the text 'Results so far (2)'.

Results so far (2)

✓ Appreciated by schools, children, local communities and politicians

! Maintenance

Effects

- Playfully challenged to move (overweight)
- Pedagogical climate (bullying)
- Different zones occur collisions (safety)

Upcoming milestones

Subsidy for 20 redesigned schoolyards in 2018

Assessment of health impacts of the greening of school playgrounds in PERFECT

Needs assessments of schools for the extension of AIS.

Political decision: completion or continuation





Questions / contact?

Erik Disch

E.Disch@amsterdam.nl

Project Management Department

