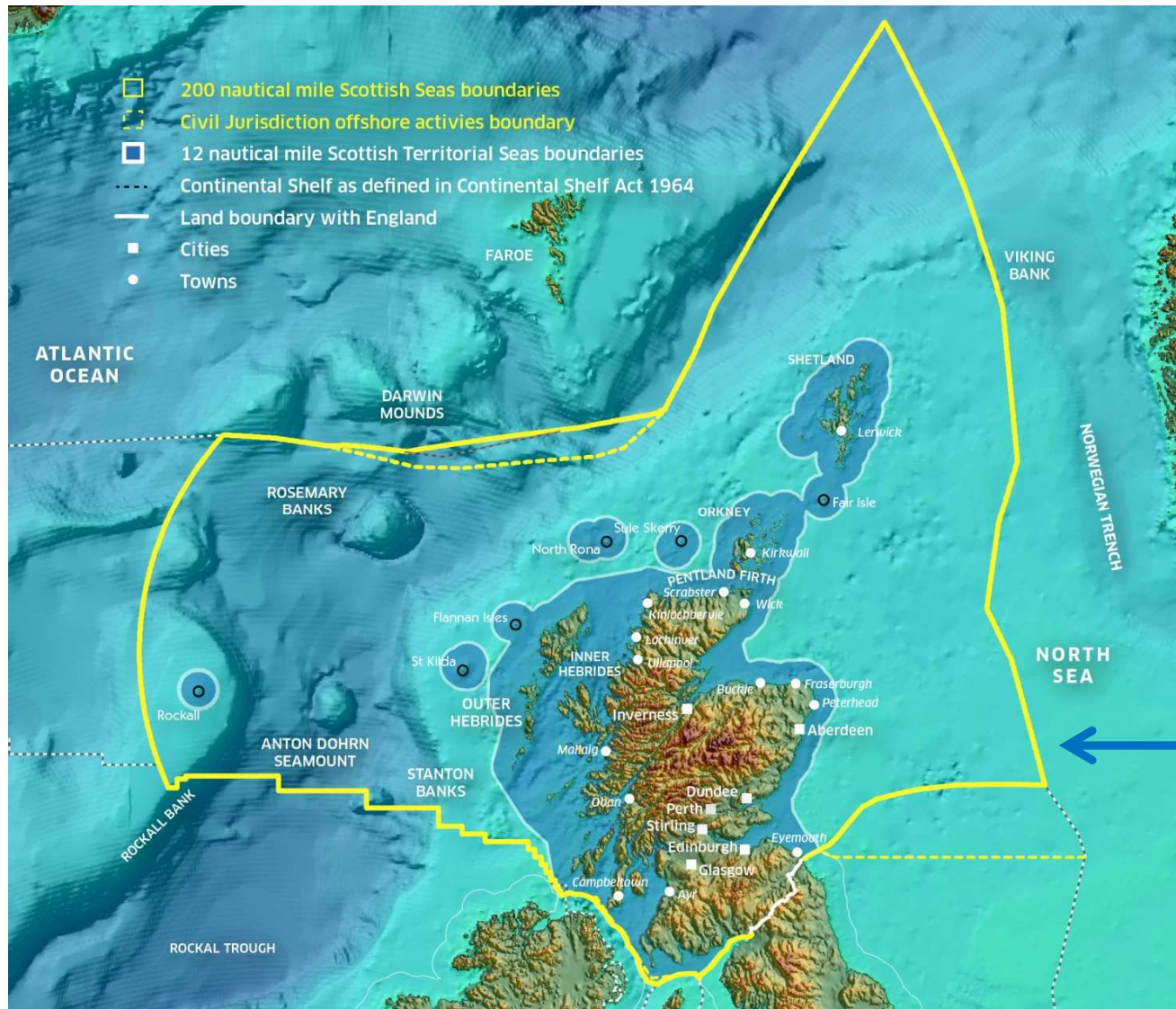


Marine Spatial Planning in Scotland

David Pratt
Head of Planning & Strategy



Scotland's Seas



62%
of UK sea area

Covers over 6 x
Scotland's land
mass

National Marine
Planning area
out to 200NM

marinescotland

Planning

marine scotland

Licensing

Science

Marine Scotland and The Crown Estate

marinescotland

**Marine Planning
and Licensing
Authority**



**Crown Estate
Scotland**

Oighreachd a' Chrùin Alba

**Seabed Leasing
Agency**

Scottish Marine Planning System

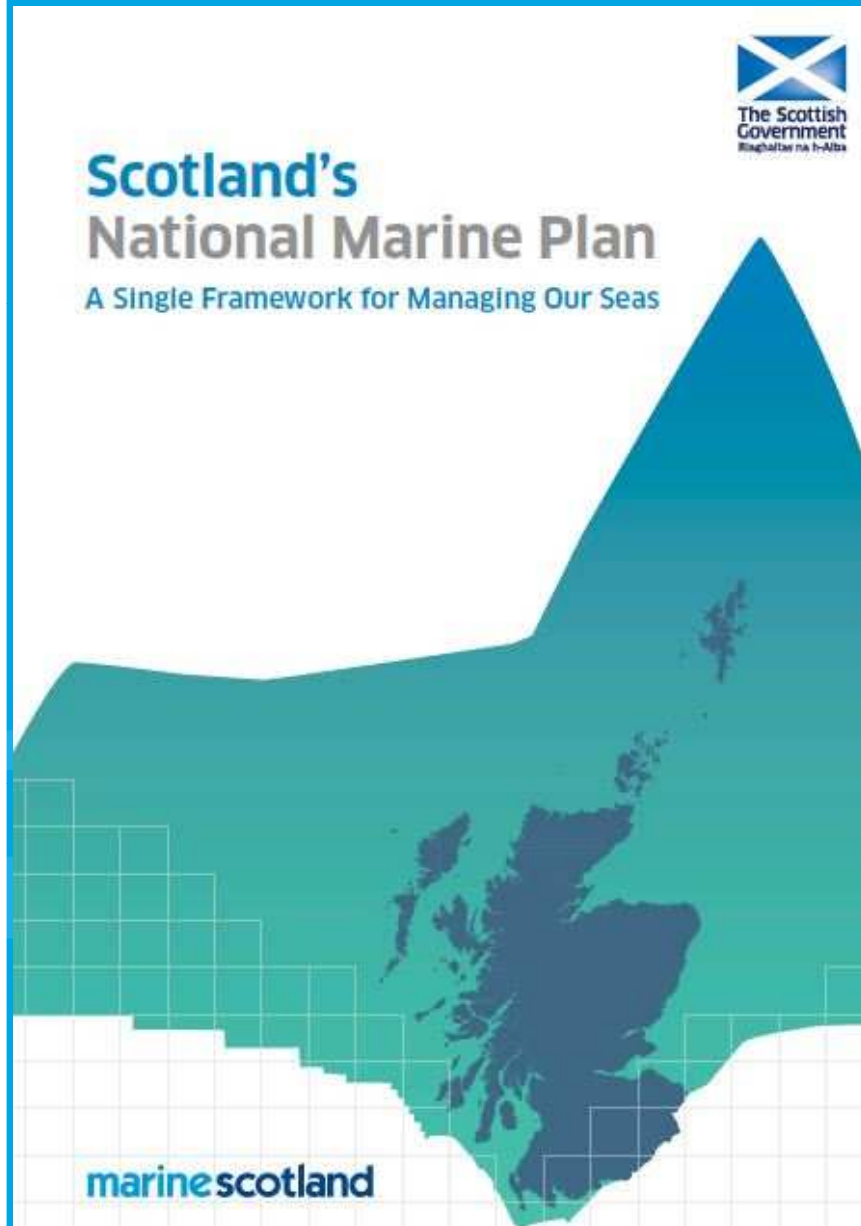


- Marine Scotland Act and Marine and Coastal Access Act provides legislative basis for a marine planning system in Scottish inshore (0 -12nm) and offshore waters (12 -200nm)
- Marine Policy Statement is the UK framework for marine plans and taking decisions
- National Marine Plan translates the MPS into policy and spatial guidance for the Regional Marine Plans
- Regional Marine Plans will provide greater spatial policy and guidance at a local level for inshore area (0 – 12nm).

Complies with the European Marine Spatial Planning Directive

marinescotland

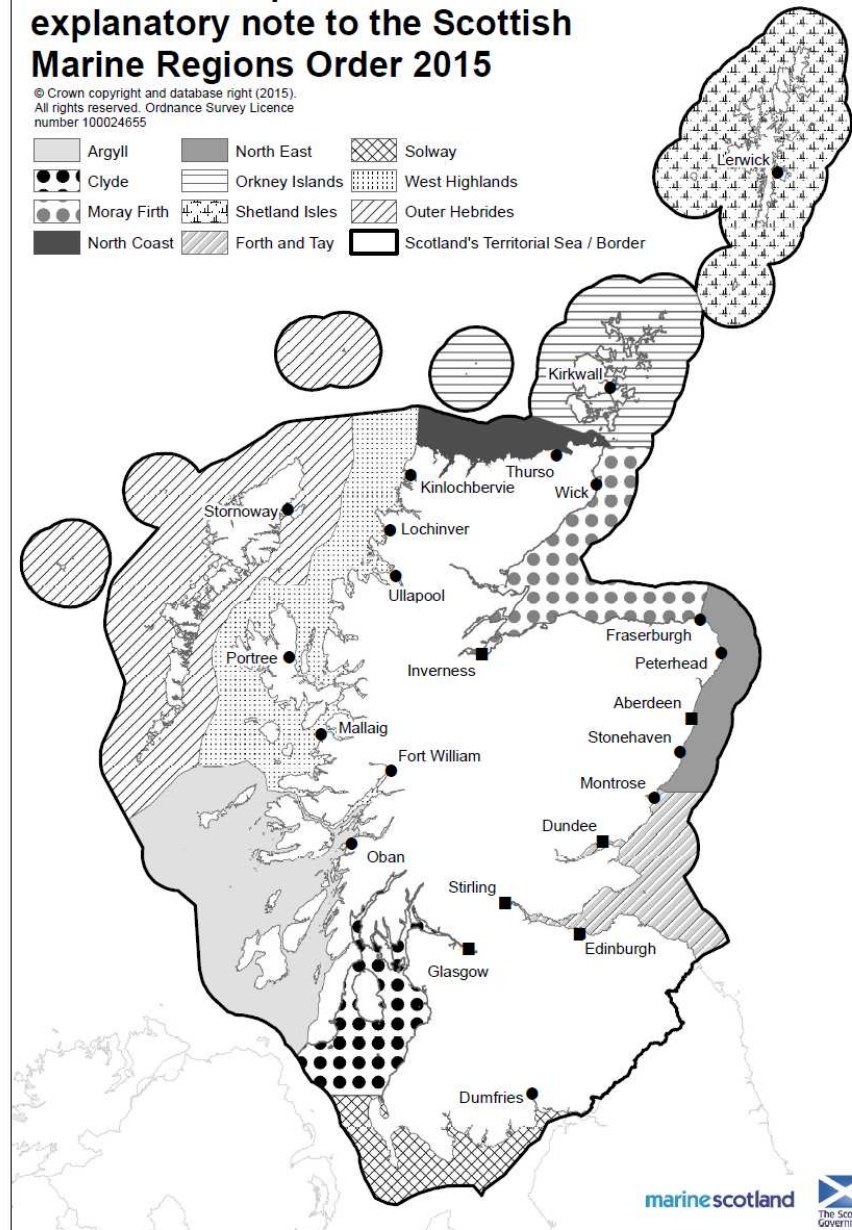
National and Regional Marine Planning



Illustrative map referred to in the explanatory note to the Scottish Marine Regions Order 2015

© Crown copyright and database right (2015).
All rights reserved. Ordnance Survey Licence
number 100024655

- | | | |
|-------------|----------------|-------------------------------------|
| Argyll | North East | Solway |
| Clyde | Orkney Islands | West Highlands |
| Moray Firth | Shetland Isles | Outer Hebrides |
| North Coast | Forth and Tay | Scotland's Territorial Sea / Border |



Alignment with terrestrial planning



- Overlap of planning areas - co ordination required in the coastal zone (supporting aquaculture, marine renewables, tourism, recreation)
- Deliberate overlap in legislation re. jurisdiction
- Legislative requirement for marine and development plans to have regard to one another

marinescotland

Strategic Planning for Marine Energy in Scottish Waters

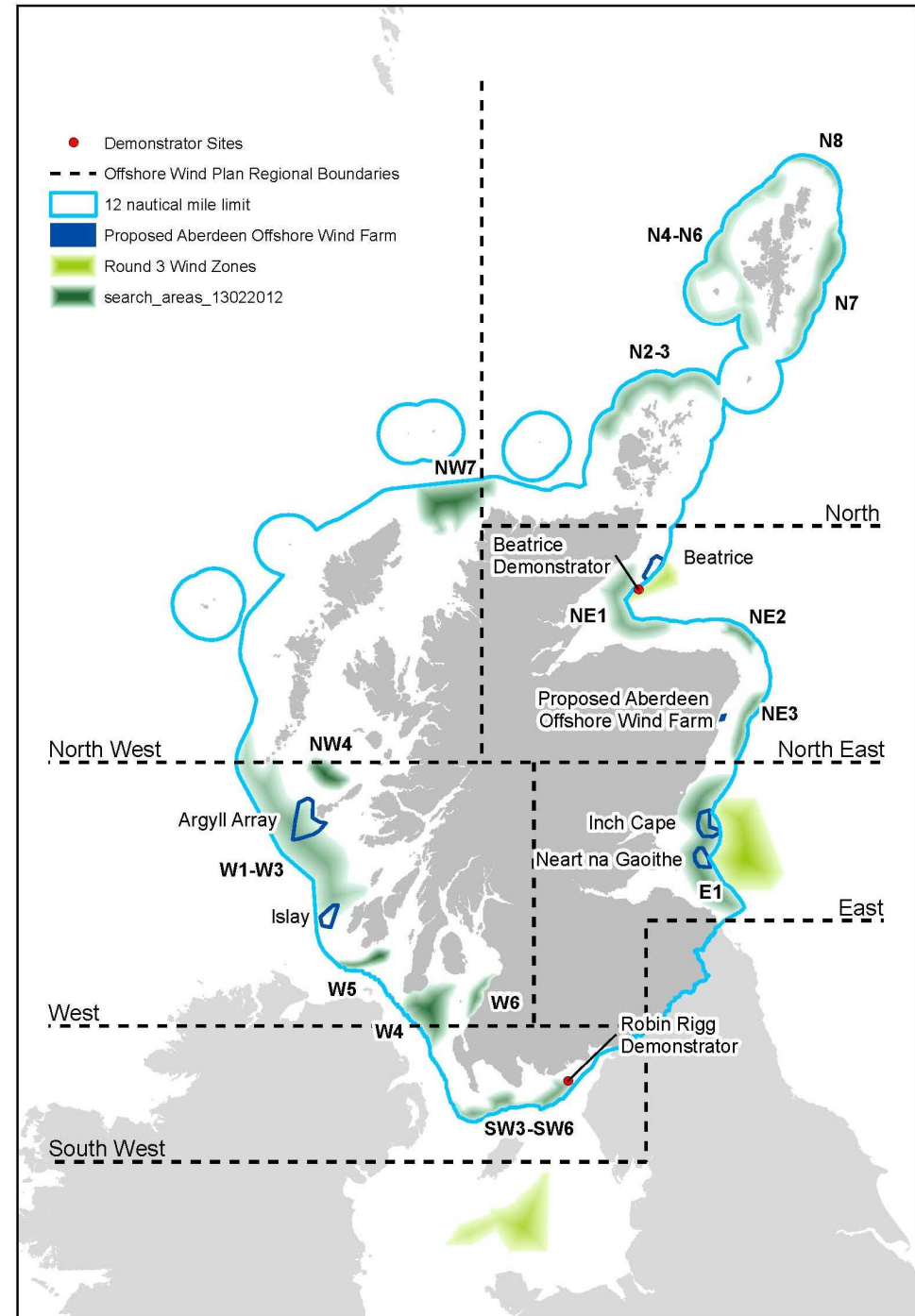


Blues Seas Green Energy – Offshore Wind Plan Energy - 2011

Consented Projects

- Inch Cape
- Neart na Gaoithe
- Beatrice
- UK DECC SEA 2 Zones
 - Seagreen
 - MORL

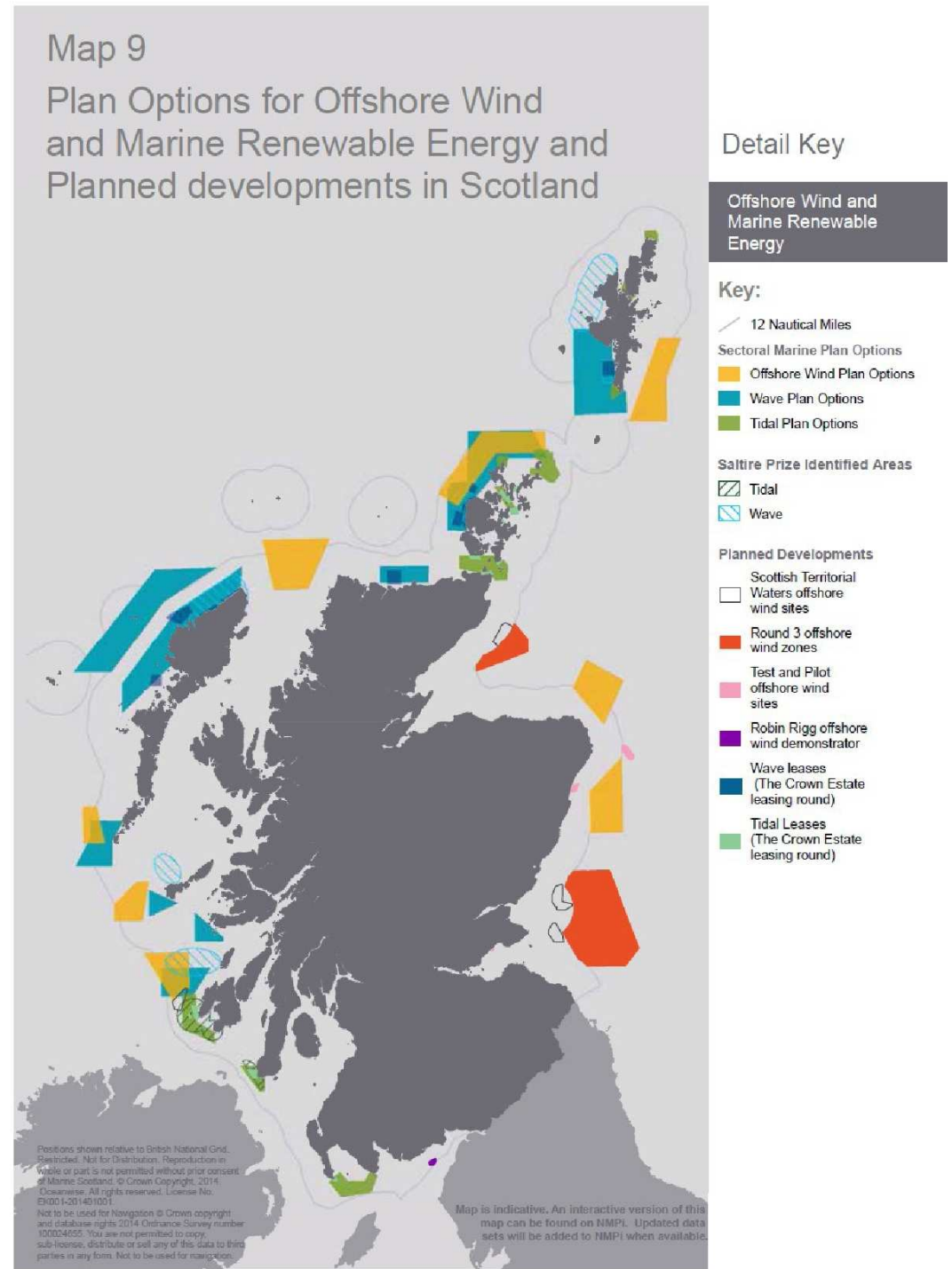
**Dark Green Search
Areas** provided starting
point for current process



Sectoral Marine Plans

Offshore Wind
Wave
Tidal

Planned
Developments



Consultation Analysis

- Key Strategic Sectoral and Regional Issues arising through Consultation process

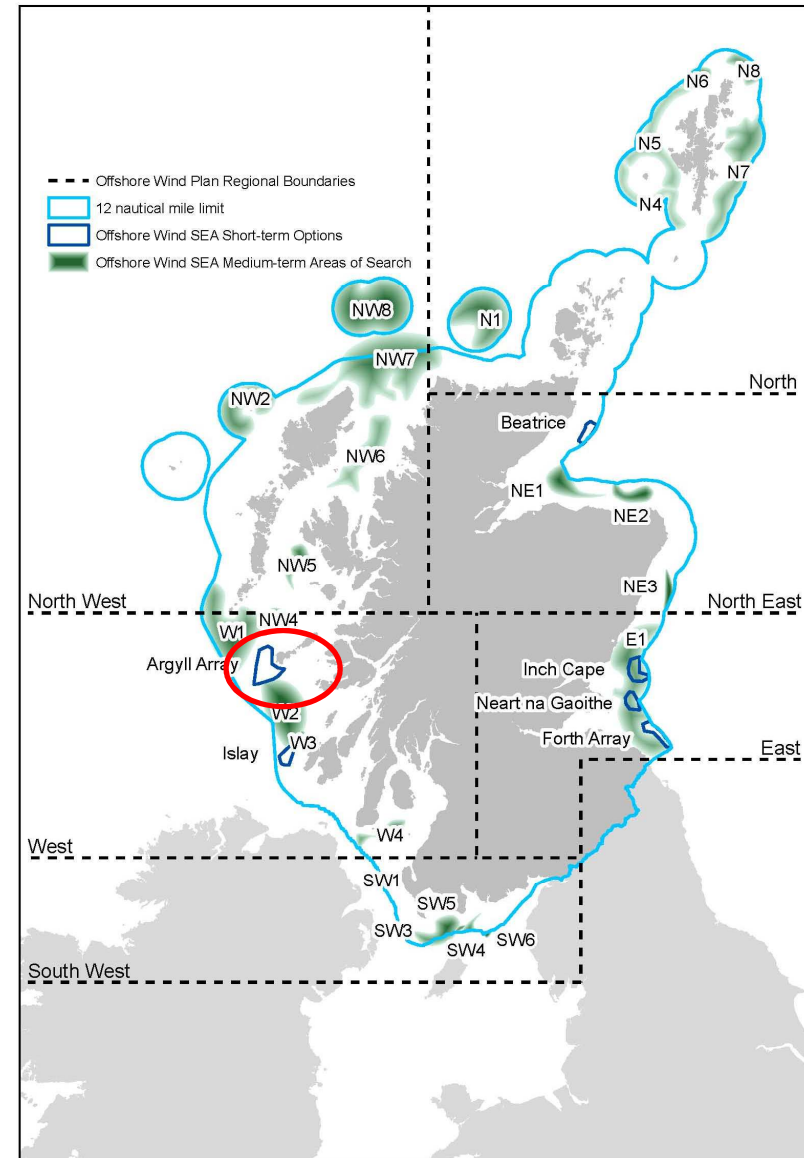
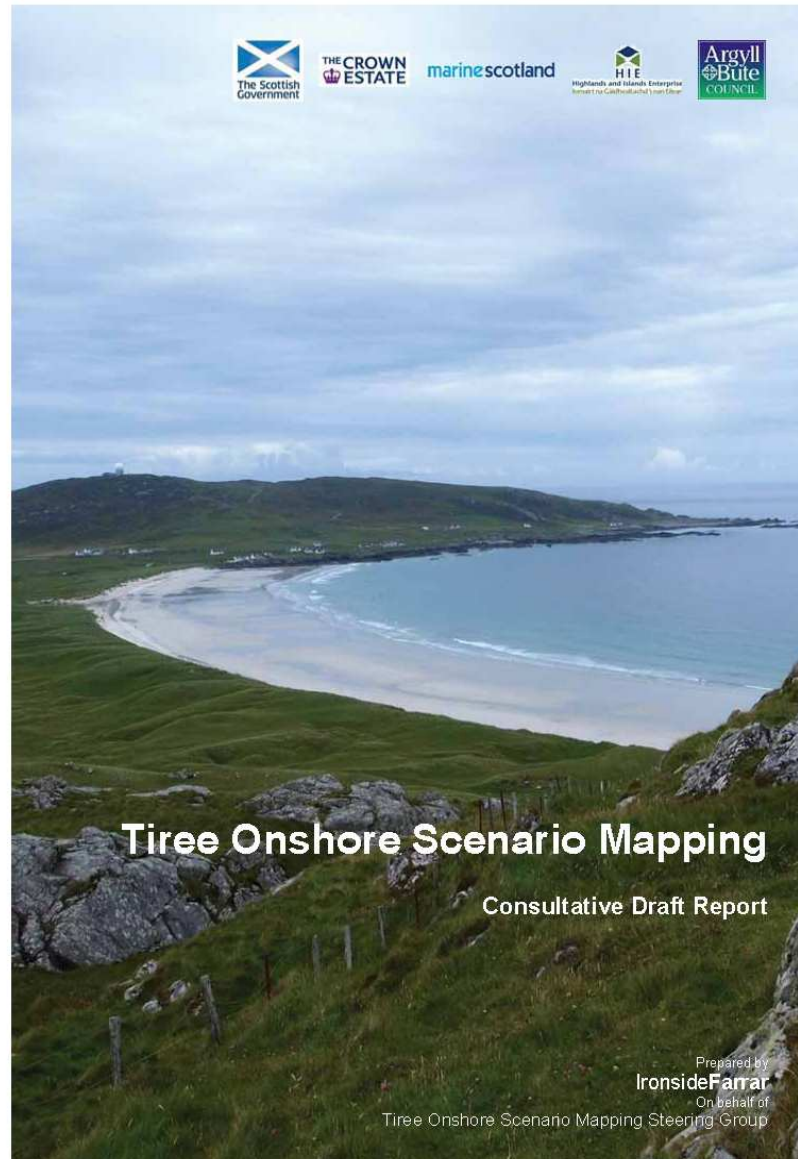
Post-adoption Statement

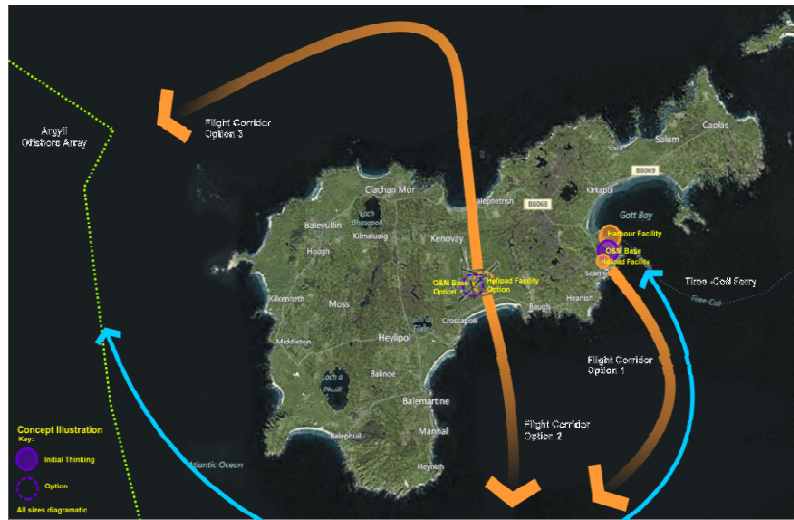
- Significant Issues, Mitigation, Monitoring and addressing Data Gaps (Strategic Research)

Planning for Social & Economic Benefit

- Scenario Mapping
- Masterplanning

Tiree 'Scenario Mapping'





Scenario 1-4 Projected needs

Jobs on Tiree

Houses on Tiree
new build

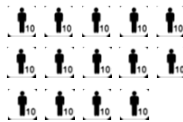
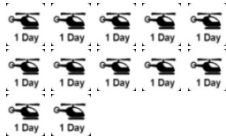
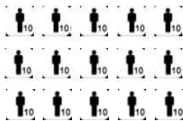
School Pupils
primary & secondary

Built Development

Helicopter Flights
per day return flights

Population Growth

1



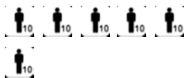
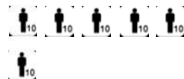
2



3



4



Scenario Mapping – East and North East Regions

Project Partners:

East Coast Renewables

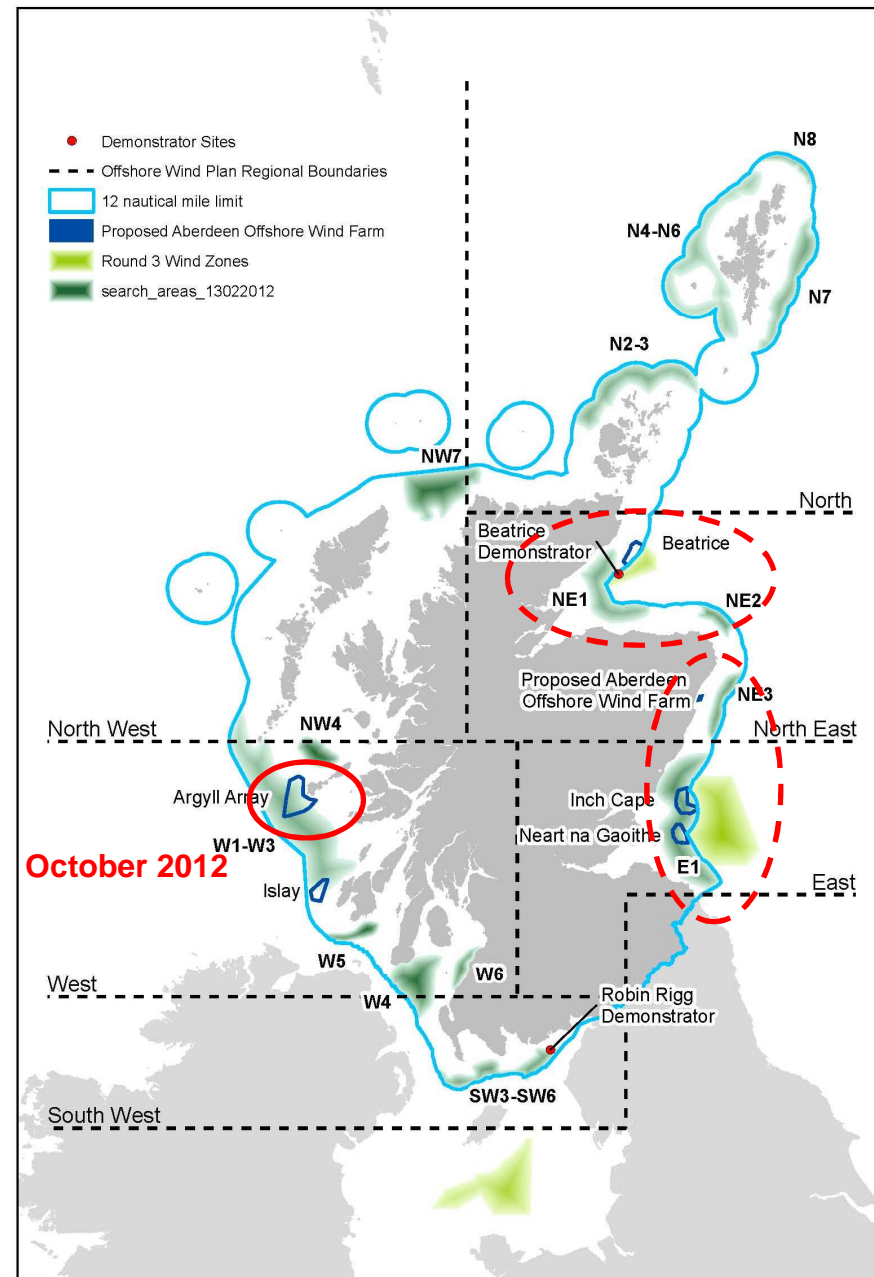
Marine Scotland

The Crown Estate

SG Energy

SE / HIE

Project was focussed on
Economic / Supply Chain
Benefits & Implications
for the Regions



The Low End

DEPLOYED CAPACITY 1,005 MW

TOTAL CAPITAL INVESTMENT £3,016

SCOTTISH INVESTMENT RETENTION £472

GVA IMPACT £693

EMPLOYMENT IMPACT 1,528

Manufacturing	WTG				
	Blades				
	Towers				
	Foundations				
	Substations				
	Cable				
	Land use				
	Peak Employment				
	Investment				
Installation	Vessel days				
	Land use				
	Peak Employment				
	Investment				
O & M	Land use				
	Peak Employment				
	Investment				

	Scotland has no industry experience and no viable skill base
	Scotland has parallel industry experience
	Scotland has industry presence, industry experience and available facilities

	50 Blades		150km Cable		50 WTG
	50 Towers		30 acres Land Use		500 Vessel Days
	50 Foundations		£500 Investment		500 Peak Employment Jobs
	1 Substation		£100 Investment		50 Peak Employment Jobs
					Built in Scotland

The High End

DEPLOYED CAPACITY 1,730 MW

TOTAL CAPITAL INVESTMENT £5,190

SCOTTISH INVESTMENT RETENTION £1,538

GVA IMPACT £1,420

EMPLOYMENT IMPACT 4,149

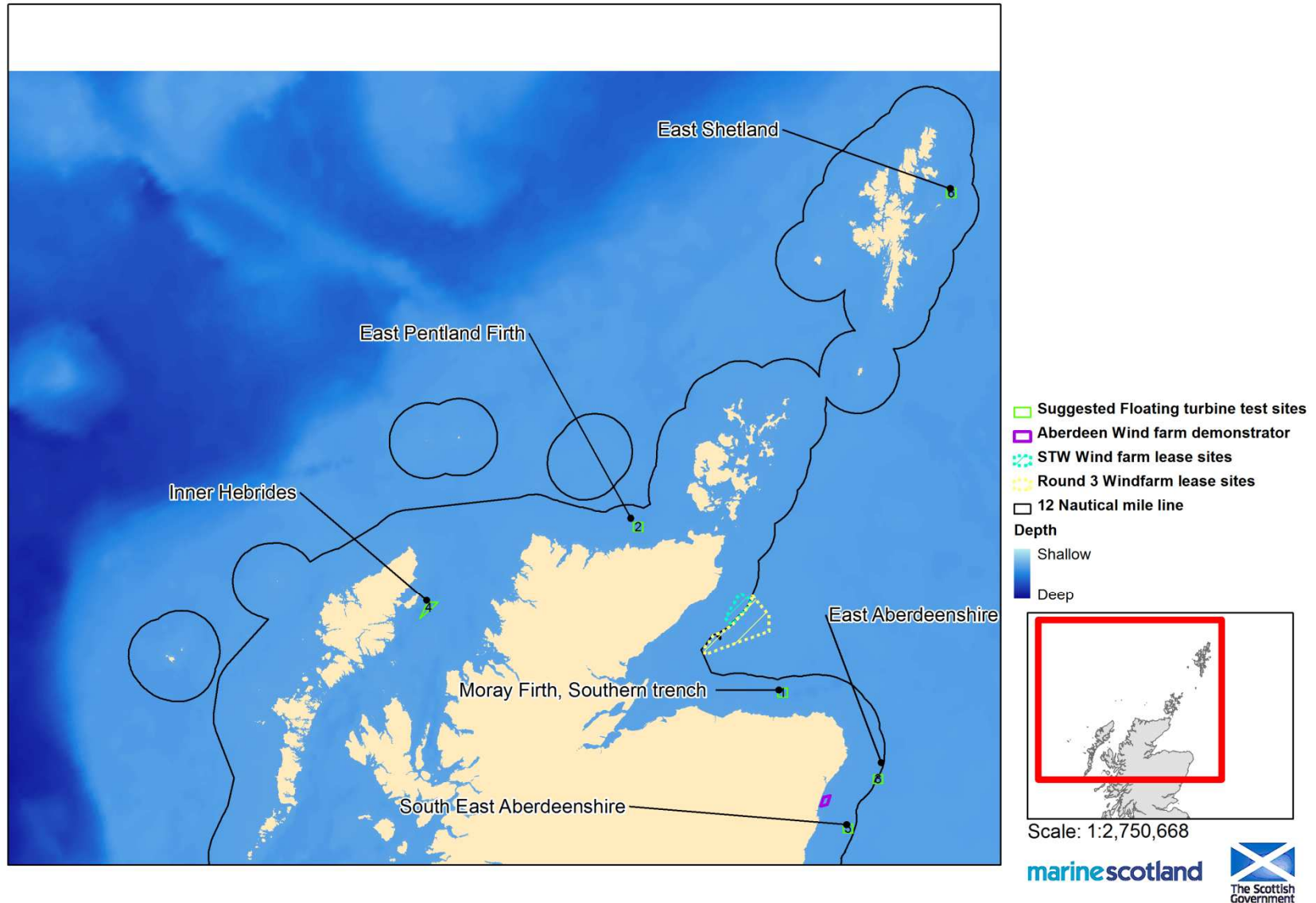
Manufacturing	WTG						
	Blades						
	Towers						
	Foundations						
	Substations						
	Cable						
	Land use						
	Peak Employment						
	Investment						
Installation	Vessel days						
	Land use						
	Peak Employment						
	Investment						
O & M	Land use						
	Peak Employment						
	Investment						

	Scotland has no industry experience and no viable skill base
	Scotland has parallel industry experience
	Scotland has industry presence, industry experience and available facilities

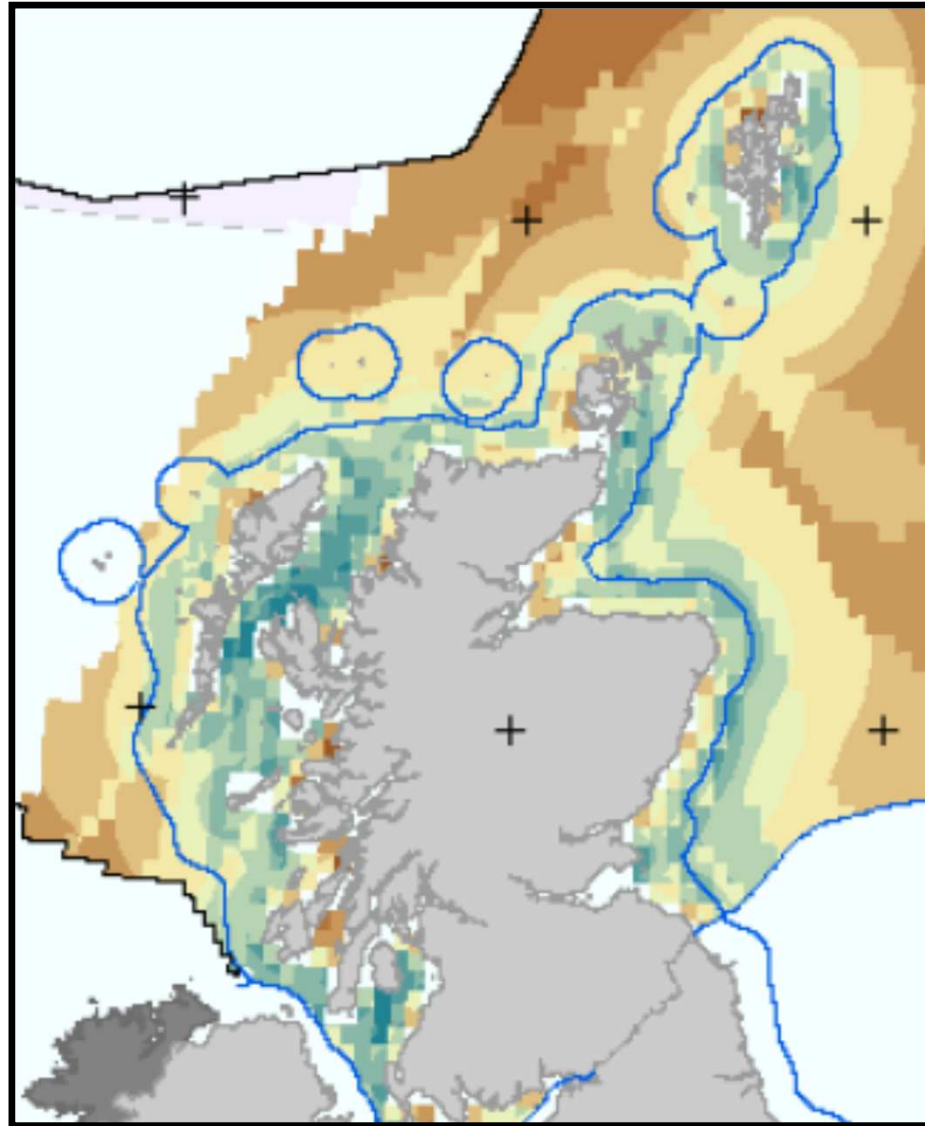
	50 Blades		150km Cable		50 WTG
	50 Towers		30 acres Land Use		500 Vessel Days
	50 Foundations		£500 Investment		500 Peak Employment Jobs
	1 Substation		£100 Investment		50 Peak Employment Jobs
					Built in Scotland

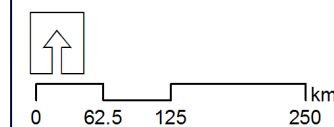
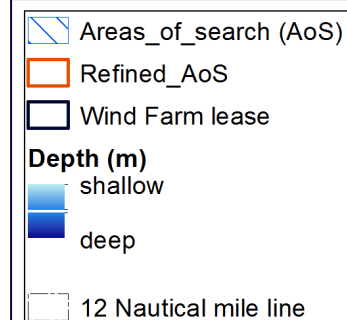
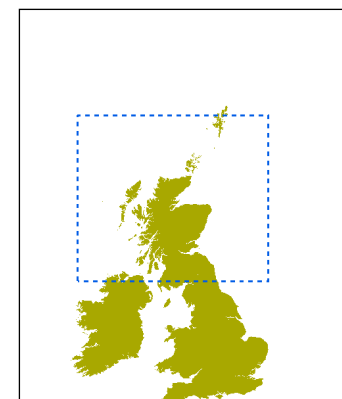
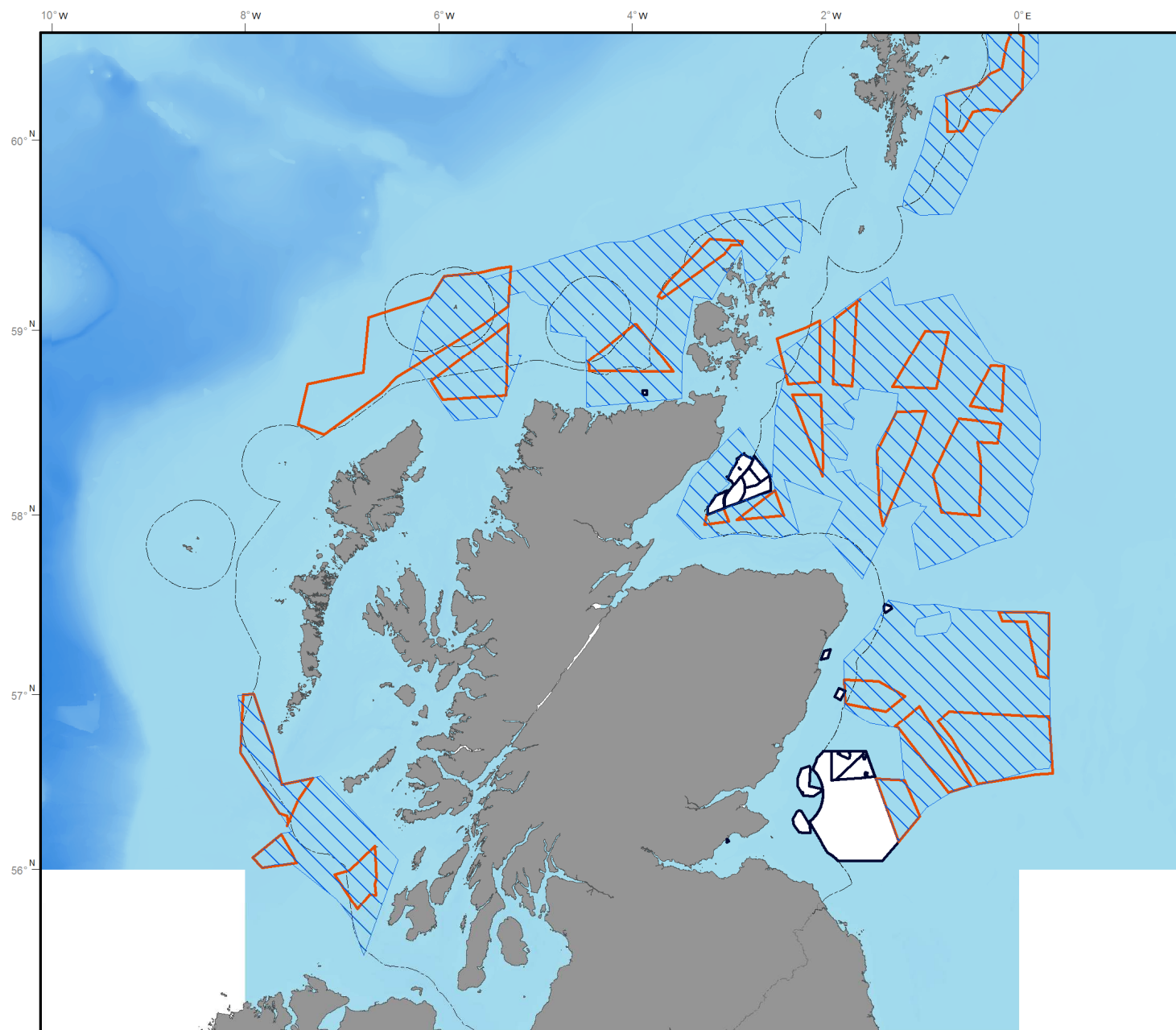
RLG – Deep Water Wind

Potential sites chosen



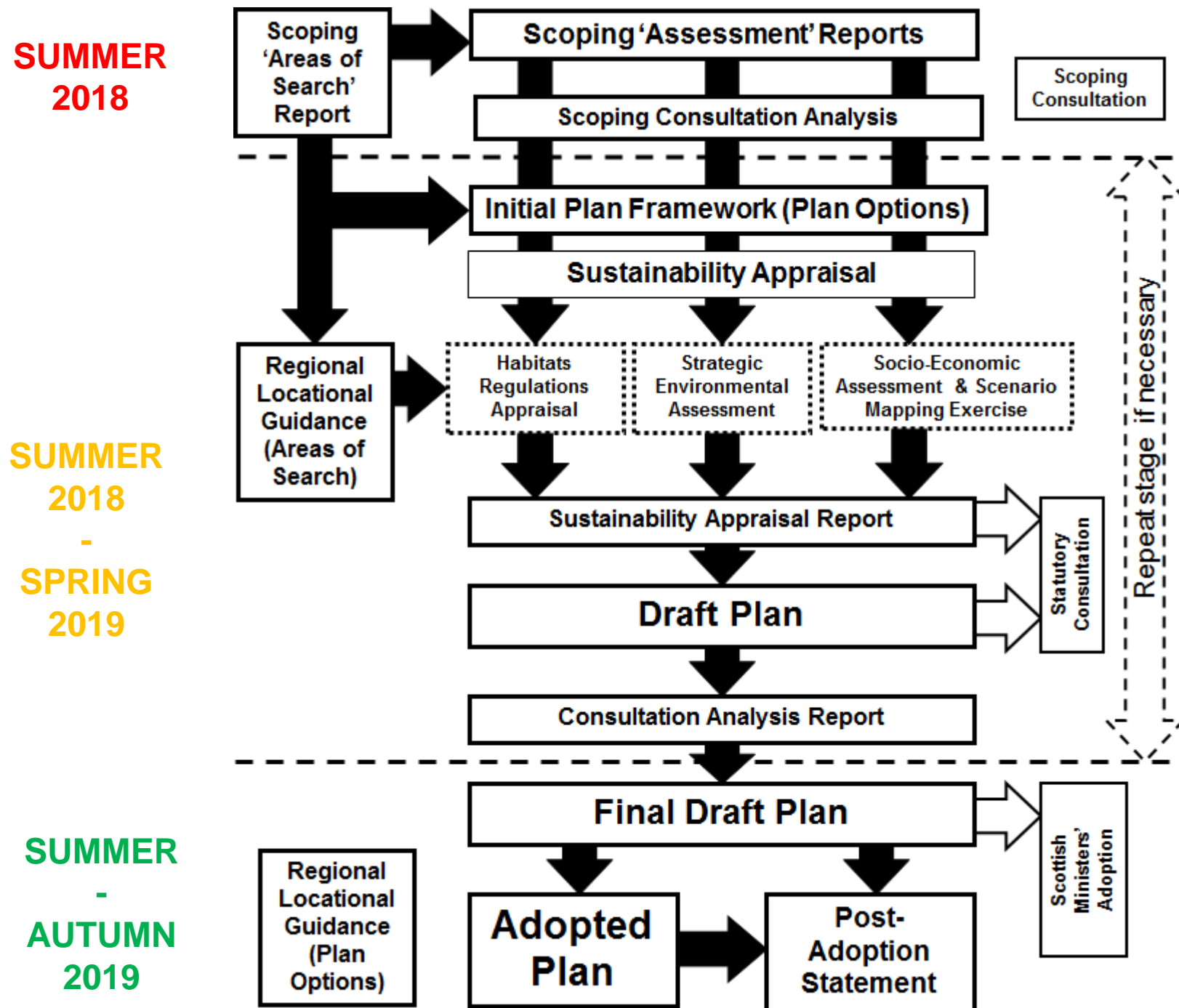
Scientific Modelling.....





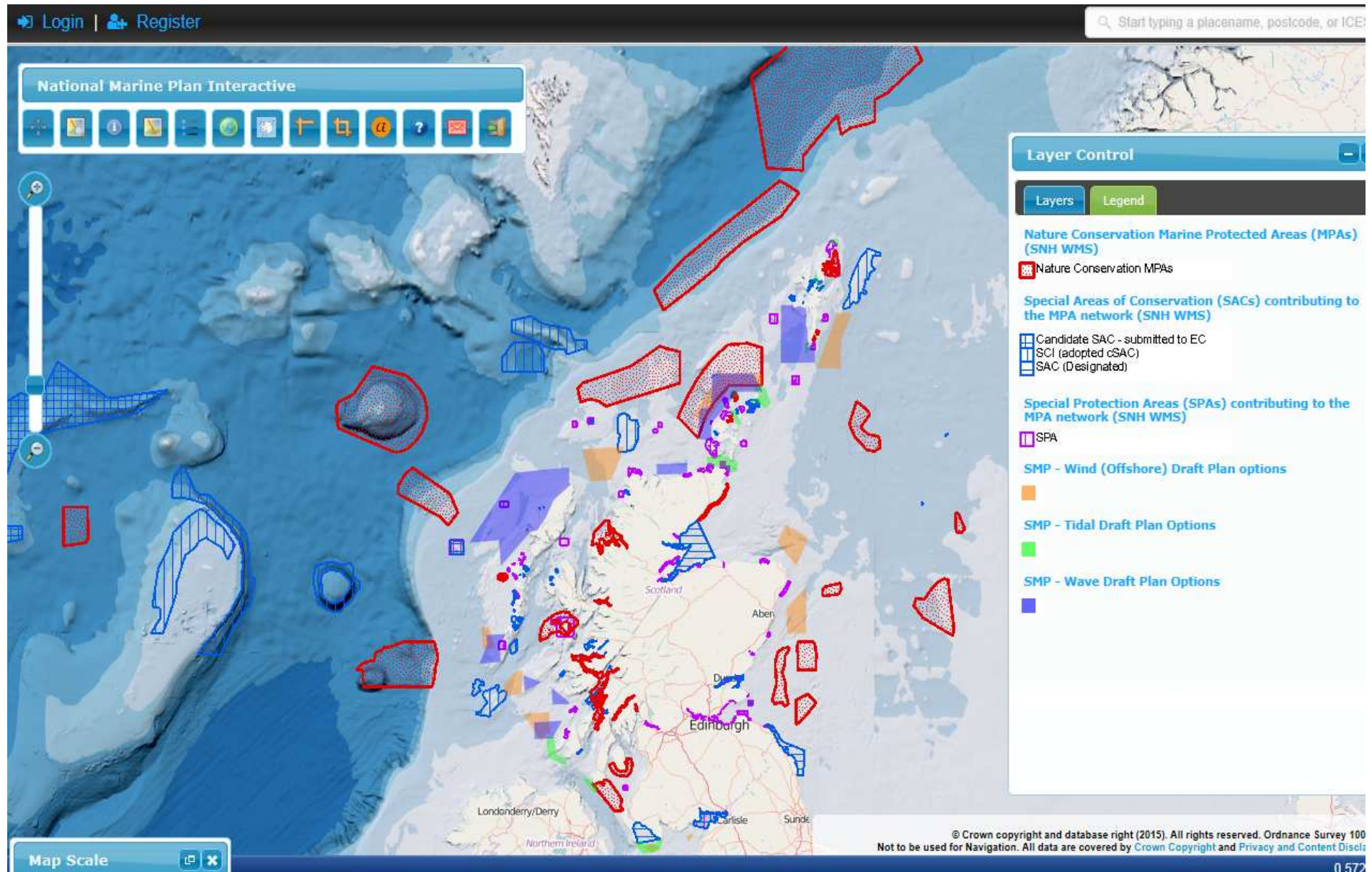
Coordinate System: WGS 1984 World Mercator
Projection: Mercator
Datum: WGS 1984





Planning Tools: NMP interactive (NMPi)

Nature Conservation MPAs and Wind, Wave and Tidal Draft Plan Options



Questions?

