



# Promoting Responsible Research & Innovation to solve marine challenges

Chiara Buongiovanni, APRE

[www.marinaproject.eu](http://www.marinaproject.eu) - [marina@apre.it](mailto:marina@apre.it)

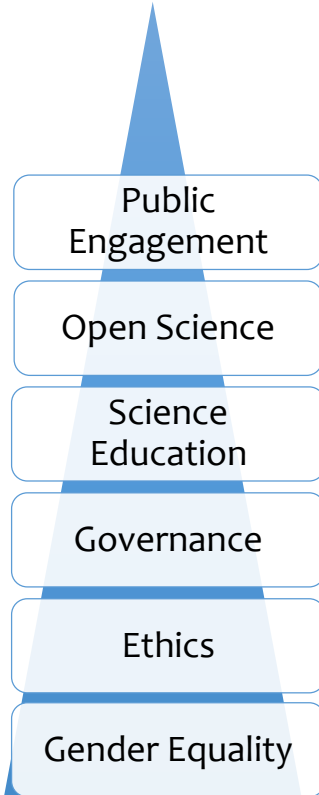
**Project Coordinator:** Fernando Ferri, CNR - CONSIGLIO NAZIONALE DELLE RICERCHE (It)



This project has received funding from the European Union's Horizon 2020 Research and Innovation Programme under GA No. 710566



*We have always relied on the seas for food, economic exploitation, transport.  
Now the marine ecosystem in Europe is in serious danger.  
Join forces to reverse this trend!*

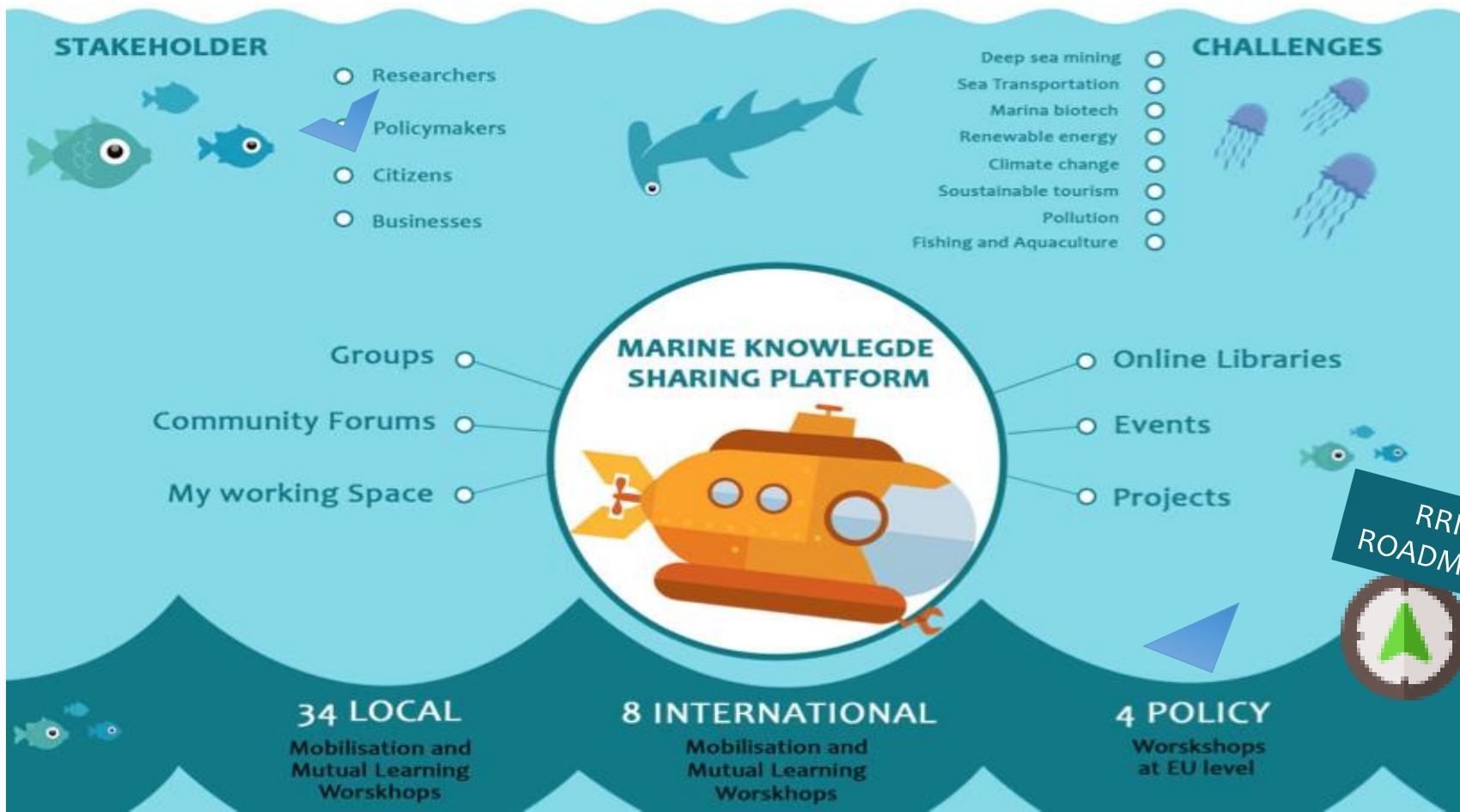


**GET STARTED IN RESPONSIBLE  
MARINE RESEARCH AND INNOVATION!**



## HOW CAN CITIZENS, ENTREPRENEURS, POLICY MAKERS PARTICIPATE IN SCIENCE AND INNOVATION TO SOLVE MARINE CHALLENGES?

- Pollution
- Marine biotech
- Renewable energy
- Climate change
- Deep-sea mining
- Fishing and Aquaculture
- Sea Transportation
- Sustainable tourism



WHAT CAN MARINA  
BRING TO  
**PUBLIC POLICY**



Marine Knowledge Sharing Platform  
serves as a **knowledge broker**  
bridging **the science-policy gap.**

The aim is to **connect actively** policy makers  
**into the RRI communities.**



Thematic workshops and MML events

# involve policy makers

to raise their interest and awareness on the H2020 Societal Challenges and the RRI concept





Lessons Learned

## Policy brief and Guidelines “Institutionalizing RRI principles and efforts”

Focus on the policy and institutional needs for consolidating  
**RRI knowledge** and know-how for **improving access**

**AIM:** reducing institutional costs and efforts  
in applying RRI principles



Workshops



Policy Mobilisation

# Message(s) for POLICY MAKERS

## THE SURVEY

Web questionnaire surveys, face to face interviews and 2 online dialogues were carried out engaging in total **121** policy-makers and **10** citizens



**Total Number Engaged : 122  
Policy Makers & 10 Citizens**

Policy makers from **16** different countries took part over the three activities surveys

**Highlights**

## CURRENT STATUS

**Less than 40% of the respondents reported a complete familiarity with the RRI dimensions.**

**International organizations (e.g. active at European level) are by far the most aware of RRI**

### RRI Current Status

**Europe in a changing world - inclusive, innovative and reflective societies” is the societal challenge mostly associated to familiarity in RRI**

**Marine Biotech, Marine changes caused by climate change and Deep sea mining are the marine issues linked to the highest familiarities with RRI**



## PRINCIPLE FINDINGS

**Institutions are capable of applying a Change Management Approach to allow the adoption and institutionalization of RRI**

**RRI institutionalization could be better achieved if required changes are inserted into the broader scale process of revision of institutional goals and structures**

**Policy organizations lacks of agreed and clear models about RRI application and definitions.**

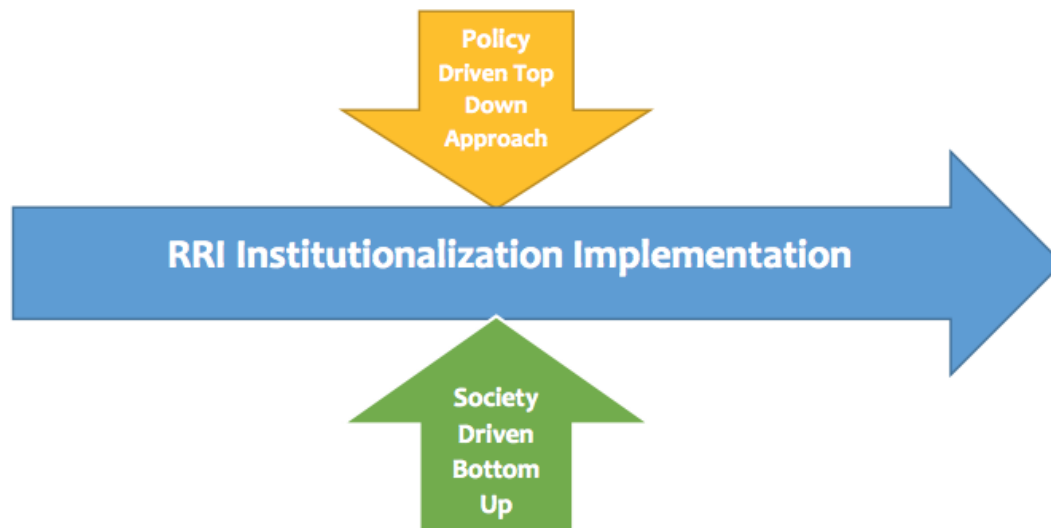
**Gender Equality and Ethics are highly evolved RRI dimensions in people's awareness and quite well implemented within organizations.**

**Public Engagement and Science Educations approaches are quickly expanding and gathering the interest of a large part of the society, but increased support from policymakers are needed for the spread of their implementation.**

**RRI must become a long term policy, with continuous support, to prevent potential changes in political orientation to divert from the implementation of RRI.**



**The positive feedback arising from the actual implementation of RRI could strengthen political commitment to RRI implementation by increasing the demand from society for such approach**





Meet you in Brussels,  
early spring @  
Final Policy Event

A large, stylized teal gear graphic on the left side of the slide, partially cut off by the edge.

Thank you!

MARINA Team

[marina@apre.it](mailto:marina@apre.it) [www.marinaproject.eu](http://www.marinaproject.eu)

