

Circular Economy in London

Andrea Crump, Circular
Economy Policy and Project
Officer

LWARB



 Resource London

**Supporting
London's Local
councils**

 Circular London

**Creating the
right
conditions for
circular
economy**

 Advance London

**Investment &
Business
support**

London

An aerial photograph of London, showing the River Thames winding through the city. The background features a dense urban landscape with numerous buildings, including the modern skyscrapers of the City of London. In the foreground, a large, semi-transparent white circle is overlaid on the image, containing the title 'London' and two bullet points. The overall lighting is bright, suggesting a clear day.

- London is growing fast – population is predicted to reach **11m by 2050** which means our attitude to waste needs to change
- The circular economy provides a sustainable and profitable solution to the challenges of this dramatic growth

Using Drivers of Change

Demonstration & Communications



Collaboration



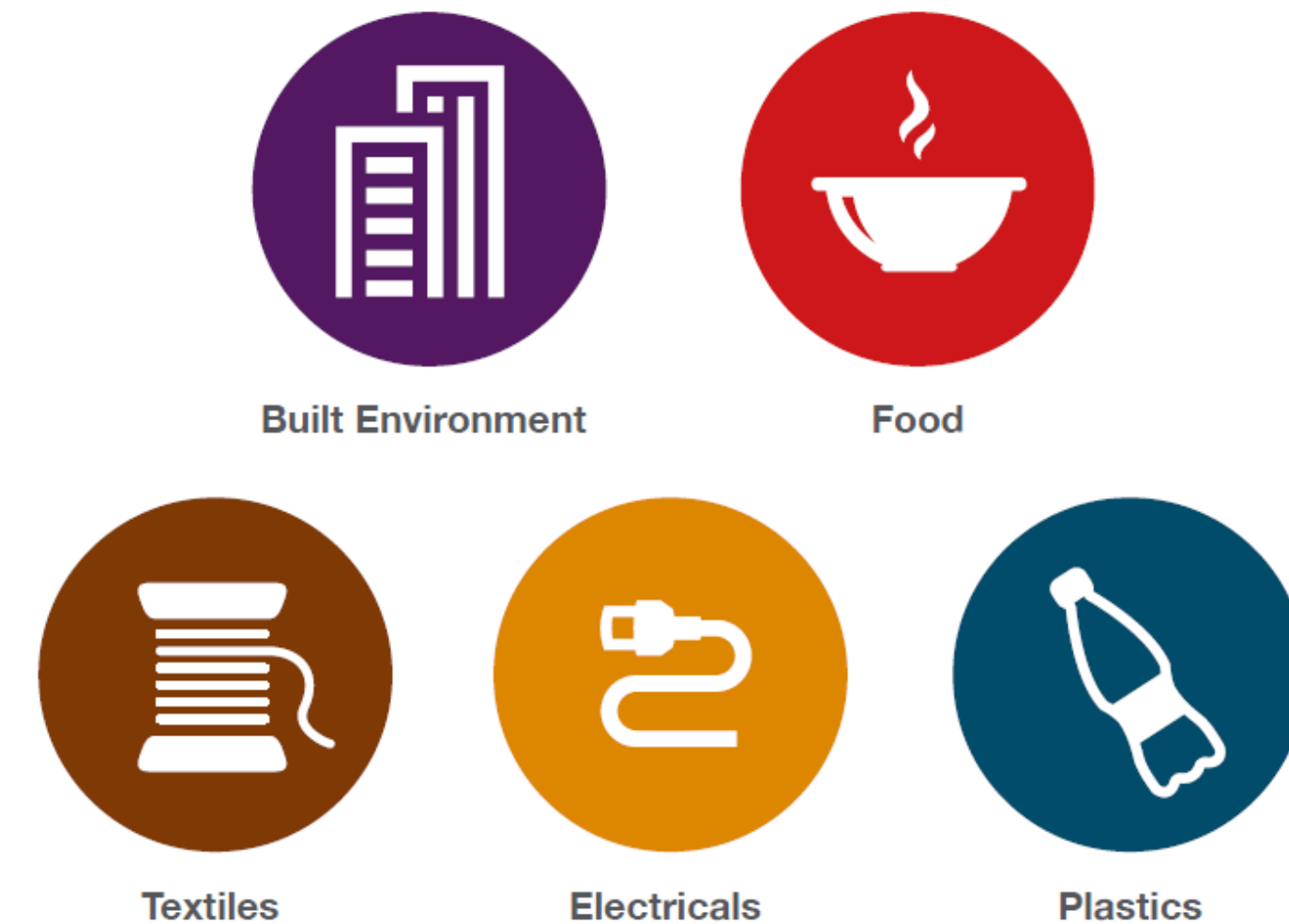
Policy & Procurement



Finance & Innovation



“This is LWARB’s vision for London – a circular city which capitalises on these opportunities to become a more resilient, resource-efficient and competitive city of the future (2017).”



It outlines 100 practical actions to transition London to a circular economy whilst providing jobs, growth and impact.



Advance London Programme

Advance London is a three-year SME programme jointly funded by ERDF and LWARB. We provide free advisory support to SMEs in London to transition to circular business models. Our services cover all following topics and are provided in one-to-one interactions or in workshops.



We connect

Along with our Circular London colleagues, we are building a vibrant community of circular economy businesses and professionals.



We advise

We provide advisory support to SMEs on how they can maximise opportunities within the circular economy.



We finance

We provide investment support to catalyse the circular economy in London. We offer this through a range of initiatives.

Policy Examples

London

Waste and recycling targets:

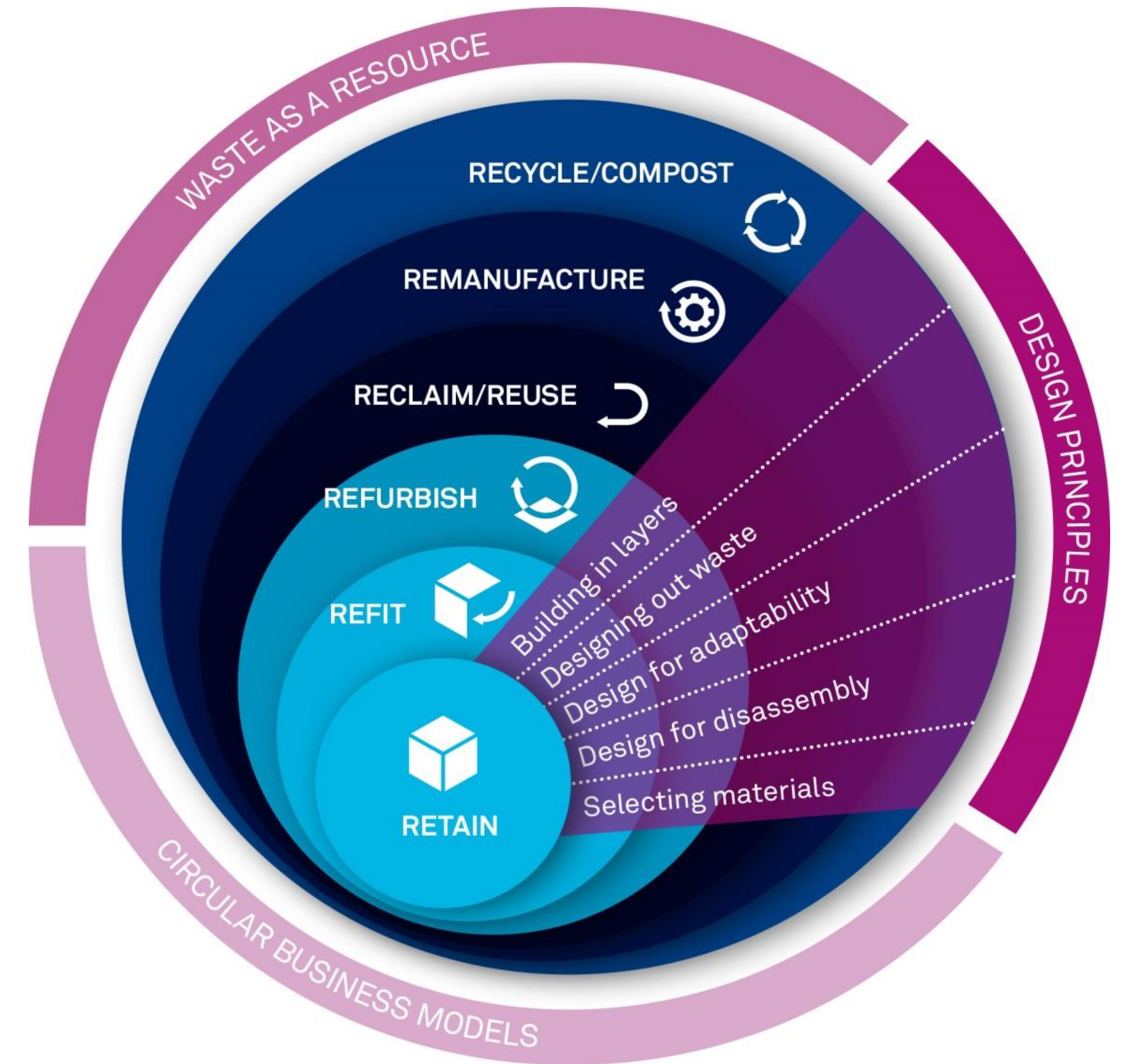
- Zero waste City: no biodegradable or recyclable waste to landfill , 65 per cent of municipal waste is recycled by 2030

Improving recycling systems

- Harmonising collection
- Better design for waste and recycling storage in new homes

Driving Circular Economy

- Support for CE businesses
- CE principles in new development (including design)
- Large developments aim to be net zero waste and create a Circular Economy Statement.
- Public procurement



David Cheshire, Building
Revolutions Rebirth

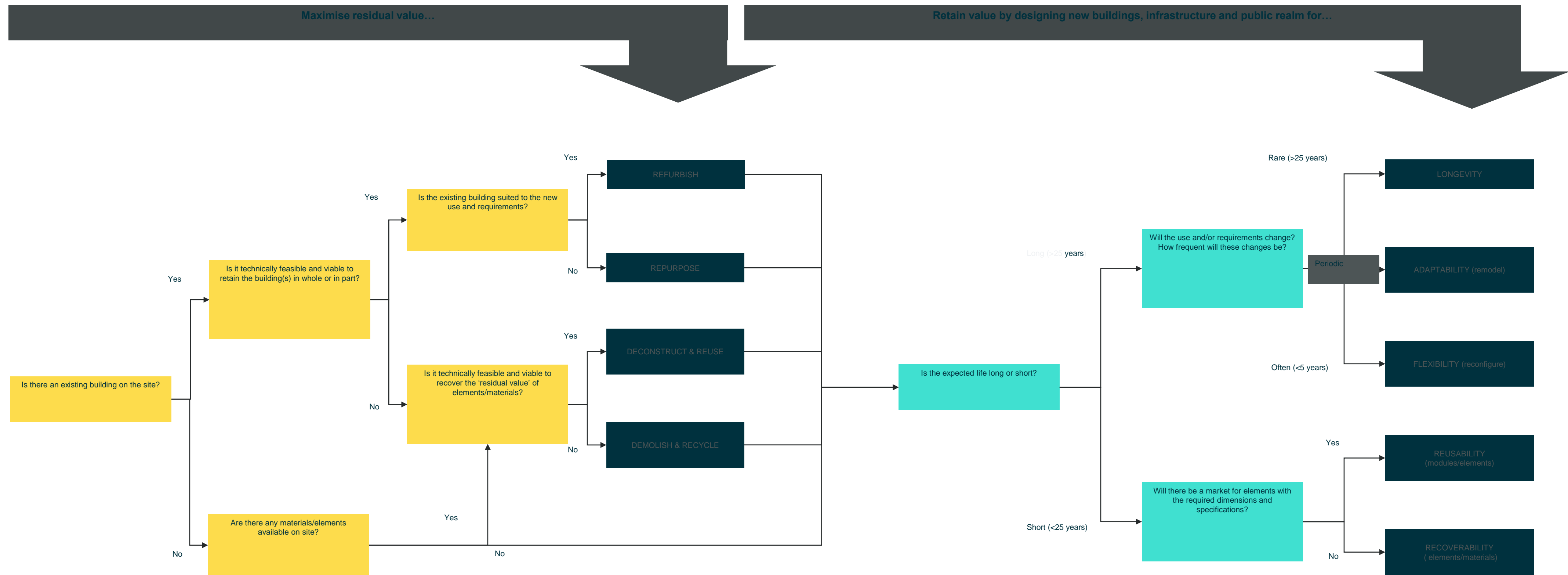
Policy

Advocating for Policy in London

- CE in LES and LP
- e.g. Circular Economy Statement

Advocating for Policy in the UK

- Formal consultation responses – plastics, fashion and advocating responses from London municipalities and partners



CITIZENS

COMMUNITIES

...to grow 1,384,728
So go on, pop your
caddy. Because food

TRIFOCAL

PROJECT SUPPORTED
BY LIFE FUNDING



LIFE 15 GIE/UK/000 867

**YOUR
BUSINESS
IS FOOD**

**DON'T THROW
IT AWAY...**

BUSINESSES

...straight from the freezer
Because food's not rubbish

SCHOOLS

EU replication cities



Resource bank

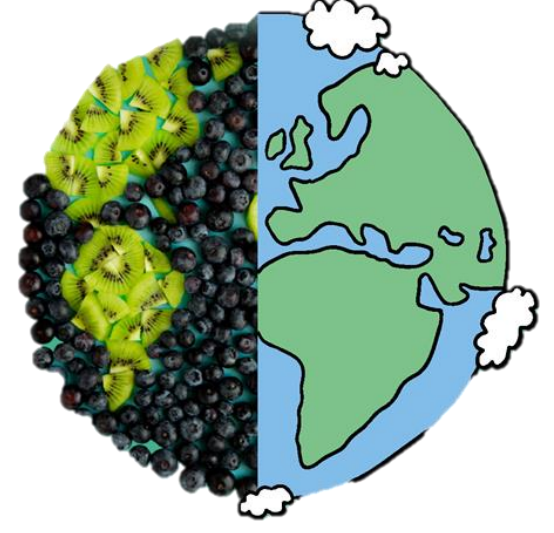
Capacity building

Campaign replication

Dissemination seminar

TRiFOCAL Ambassador

Resource bank



- Interactive, multi-stakeholder platform
- Evidence, guidance and examples of campaign materials
- resources.trifocal.eu.com



[About Trifocal](#) [Project Resources](#) [Contact us](#)

[Sign In](#) →



Food Waste Prevention

Prevent food waste by changing planning, shopping, storage and meal preparation behaviour.

Healthy Sustainable Eating

Promote healthy and sustainable eating by changing purchasing and preparation practices.

Recycling Inedible Food

The recycling of unavoidable food waste.



Demonstration and Innovation

Circular Office



Circular Business Models





Thank you



@LWARB

www.lwarb.gov.uk

 ARB