



RaiSE

Interreg Europe



European Union
European Regional
Development Fund

Interregional exchange final conference

Stefan Philipp

ZSI - Centre for Social Innovation

philipp@zsi.at

18. June 2019 | Brussels



Welcoming slide for the RaiSE project. The slide features the RaiSE logo in the top right corner. The main heading is "Welcome on bord!". Below this, several partner logos are displayed around a central circular logo for Scottish Enterprise. The logos include ACCIÓ (Generalitat de Catalunya Government of Catalonia), ERVET, Region Örebro län, IFKA, WestBIC, and ZSI (Centre for Social Innovation). The slide is numbered "4" in the bottom right corner.

Vertical banner for RaiSE Interreg Europe. The top section features the RaiSE logo and the text "RaiSE enhances competitiveness of social enterprises by sharing experience in developing improved business support policies." Below this is an illustration of silhouettes of people climbing a mountain. The website address www.interregurope.eu/raise is listed. The bottom section describes the project as "An interregional cooperation project for improving SME competitiveness policies." and lists the project partners: Catalan Agency for Business Competitiveness (ACCIÓ) (ES), Centre for Social Innovation (CSI), IFKA Public Benefit Non-Profit Ltd. for the Development of the Industry (IN) (I), Innovation & Management Centre Limited (DevotIC) (IE), ERVET - Emilia Romagna Economic Development Agency L.r.l. (IT), Region Örebro County (SE), and Scottish Enterprise (UK).

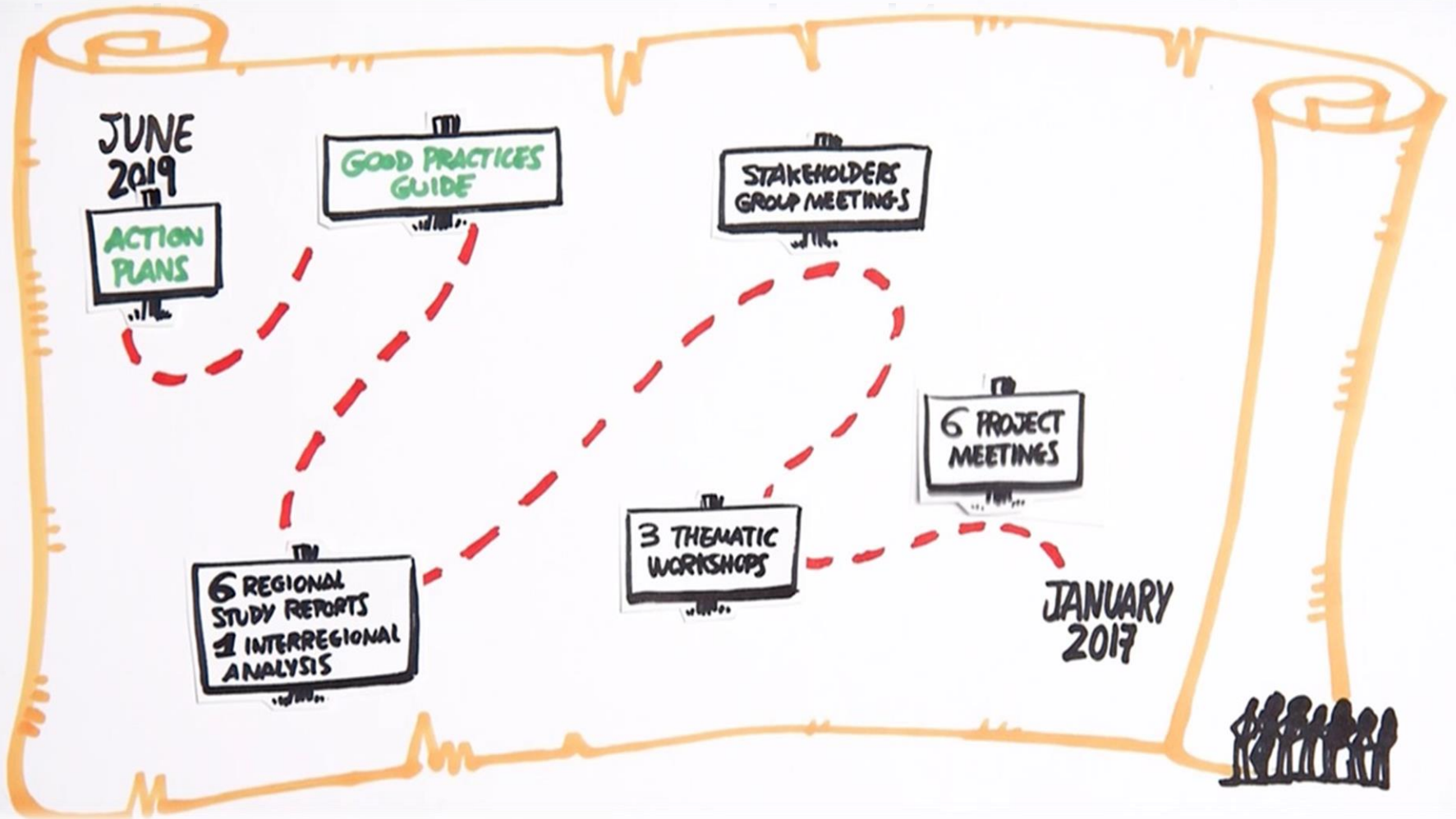
2 ½ years of raising this project all together!

RaiSE – what was it about?

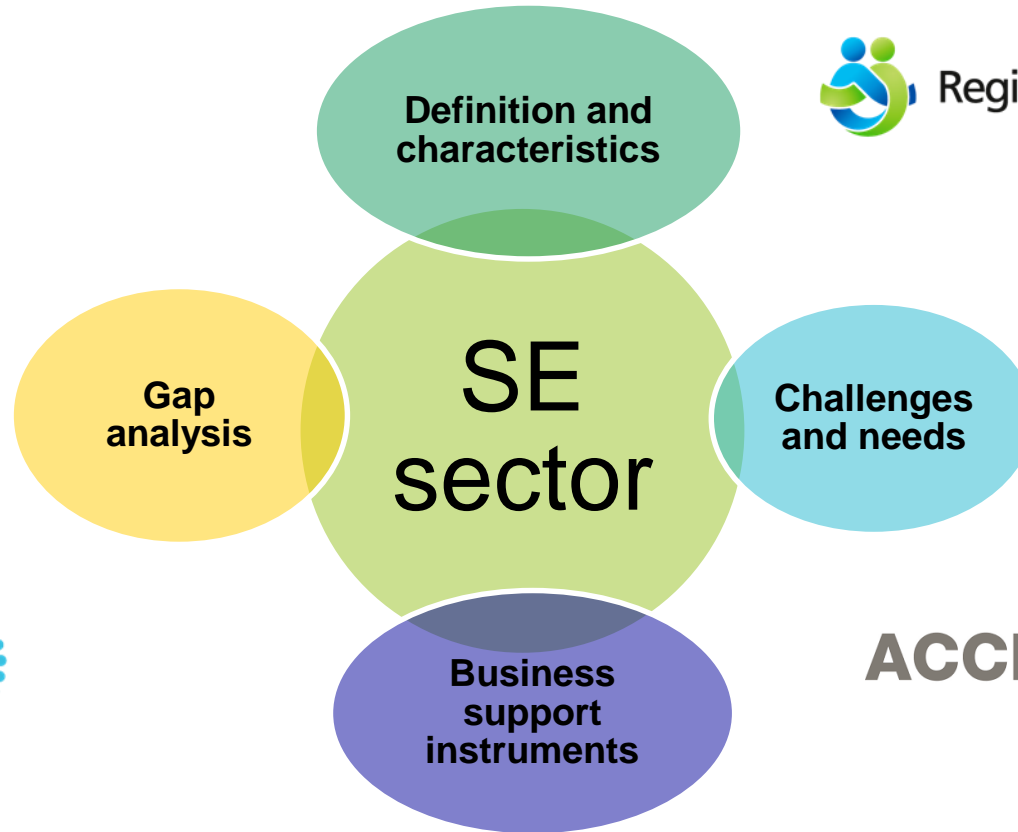
Enhancing social enterprises competitiveness through improved business support policies



RaiSE – work programme



RaiSE – methodology



Regional studies

Good Practices

SWOT

Action Plans

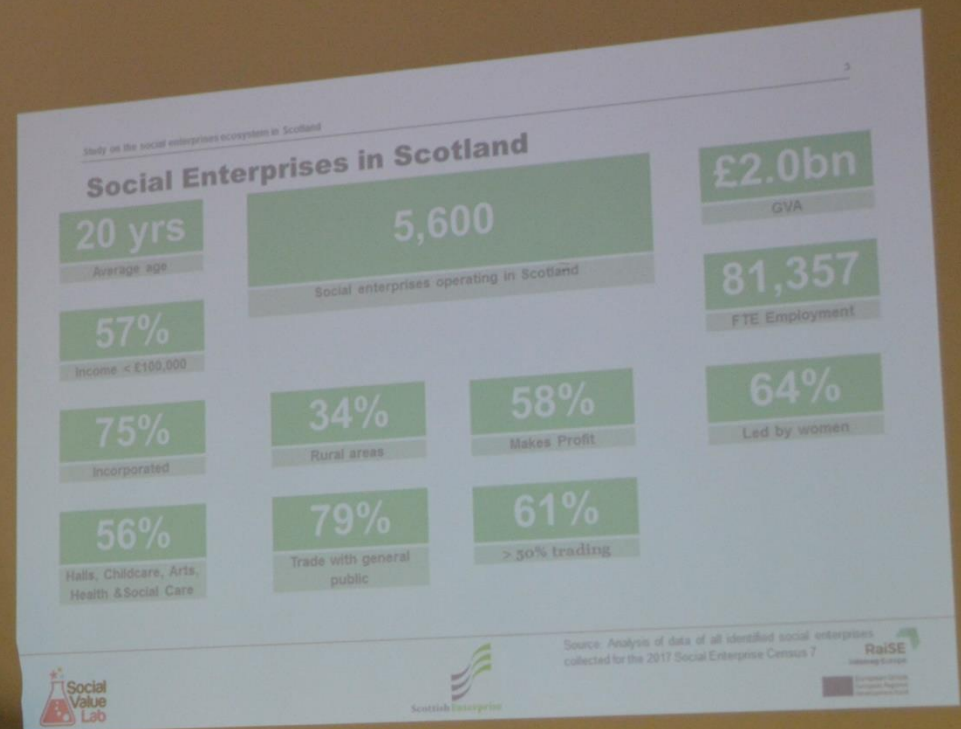
RaiSE – sectoral characteristics

- In general rather old and **established sector** (many enterprises older than 10 years)
- Legally, most SE are **social cooperatives**, in some regions charities or non-profit organisations are important forms
- Financial data is not sufficiently available, but the available data suggests annual **income** mostly below 500,000 €
- Common is the rather small number of **employees**, between 0-10 is the most often mentioned number
- SE are tending to operate in the **urban areas**

RaiSE – sectoral characteristics

- SE work for the **benefit of local and disadvantaged communities** (including a variety of aspects: elderly, socially isolated, excluded, unemployed, disabled etc.)
- flexibility of the SE sector compared to the public sector allows to work more **efficiently on small-scale problems** and with specific groups
- SE work in the **service-delivery sector**, most often mentioned services are: educational, health and social, work-integrating
- The majority runs their business only on the **local/community-related level**
- Generally, the SE sector is **profitable**

RaiSE – sectoral characteristics



RaiSE
Interreg Europe

RaiSE enhances competitiveness
of social enterprises by sharing
experience in developing
improved business
support policies.

www.interregeurope.eu/raise

An interregional cooperation project for
improving SME competitiveness policies.

Project Partners

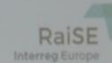
Business Competitiveness (ACCIO)
Centre for Social Innovation
for the Development of the Industrial
& Management Centre Limited (Interreg)
Interreg Economic Development Agency (I.E.D.A.)
Region Orléans County (SO)
Interregional (I.E.D.A.)

RaiSE – Added value



RaiSE – good practices

What is a Good Practice?



Interreg Europe Programme Manual defines Good Practices (GP) as...

“An initiative (e.g. project, process, technique) undertaken in one of the programme’s priority axes which has proved to be successful in a region and which is of potential interest to other regions”.

Proved successful = tangible and measure results in achieving a specific objective.

RaiSE
Interreg Europe

RaiSE enhances competitiveness of social enterprises by sharing experience in developing improved business support policies.

www.interregeurope.eu/raise

An interregional cooperation project for improving SME competitiveness policies.

Project Partners

- Competitiveness (ACCIO) (ES)
- Centre for Social Innovation (AT)
- Ministry of the Industry (HU)
- Centre Limited (WestBIC) (IE)
- Development Agency L.t.d. (IT)
- Region Orebro County (SE)
- Scottish Enterprise (UK)

RaiSE – good practices



Introduction of the instrument

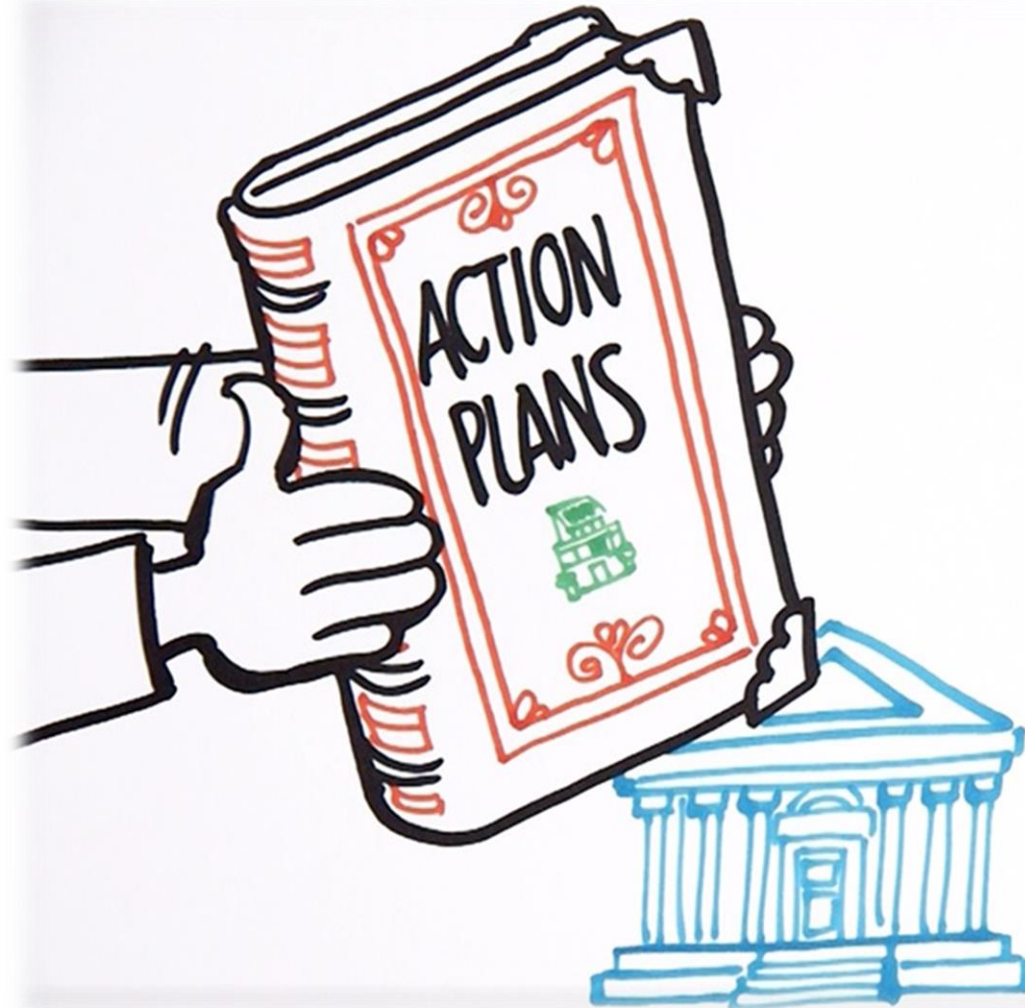
- Instrument title
- Regions – with/without/being involved in the instrument
- Managing/Lead – institution
- Legal structure – who is responsible for it
- Key people involved
- Key financial contributors
- Staff – understand community needs and build on it
- Managing/Lead/Staff

RaiSE
Interreg Europe

Build economic competitiveness
of rural areas by sharing
expertise to develop
rural business
growth policies.

www.interreg.eu/rise

RaiSE – end of phase 1.





RaiSE

Interreg Europe



European Union
European Regional
Development Fund

Thank you!