



RaiSE

Interreg Europe



European Union
European Regional
Development Fund

Scotland's Social Enterprises: Policy and Action Plan

Laura Worku, Scottish Government

Darah Zahran, Scottish Enterprise



E-mail laura.worku@gov.scot darah.zahran@scotent.co.uk

18 June 2019

Policy Context



Scotland's National Performance Framework

Purpose Statement

The framework is for all of Scotland. We aim to:

- create a more **successful** country
- give **opportunities** to all people living in Scotland
- increase the **wellbeing** of people living in Scotland
- create **sustainable** and **inclusive growth**
- **reduce inequalities** and give equal importance to **economic, environmental and social progress**

Policy Development: 2003 - 2019

Devolution

**Social Economy Review
2003**

**Futurebuilders Scotland –
Investing in the Social
Economy 2004**

**May 2005 Parliamentary
motion**

**Better Business – Strategy
and Action Plan for social
enterprise in Scotland 2007**

Enterprising Third Sector Action Plan 2008-11

**Development of
Scotland's Eco-
system for social
enterprise**

**First SEWF in
Scotland 2008**

**First Census on social
enterprise in Scotland
2015, then 2017, 2019**

**10 year strategy for
social enterprise,
2016**

**3 year Action Plan,
2017**

Action Plan #2, 2020

Strategy

SCOTLAND'S SOCIAL ENTERPRISE STRATEGY 2016-26



Scottish Government,
Edinburgh 2016



- Published Dec 2016
- Ground-breaking, long-term commitment
- Coproduced with the social enterprise sector, based on their vision.
- £24m investment in the Social Enterprise Ecosystem since launch
- Cross-party support in Parliament.

Action Plan 2017 - 2020

BUILDING A SUSTAINABLE SOCIAL ENTERPRISE SECTOR IN SCOTLAND

ACTION PLAN 2017-20

STRENGTHEN



Social Finance
Personal Development
Social Value
Business Development

Public Markets
Consumer Markets
Business Markets



MARKET

Recognition
Entrepreneurship
Education and Innovation
Local Development

STIMULATE



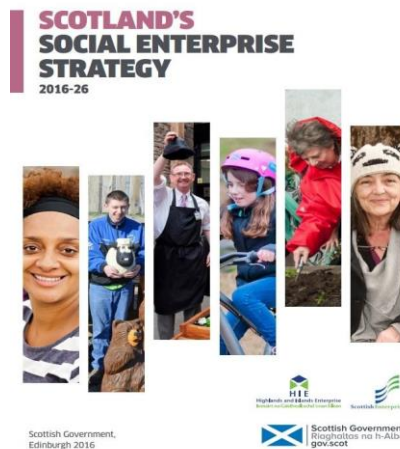
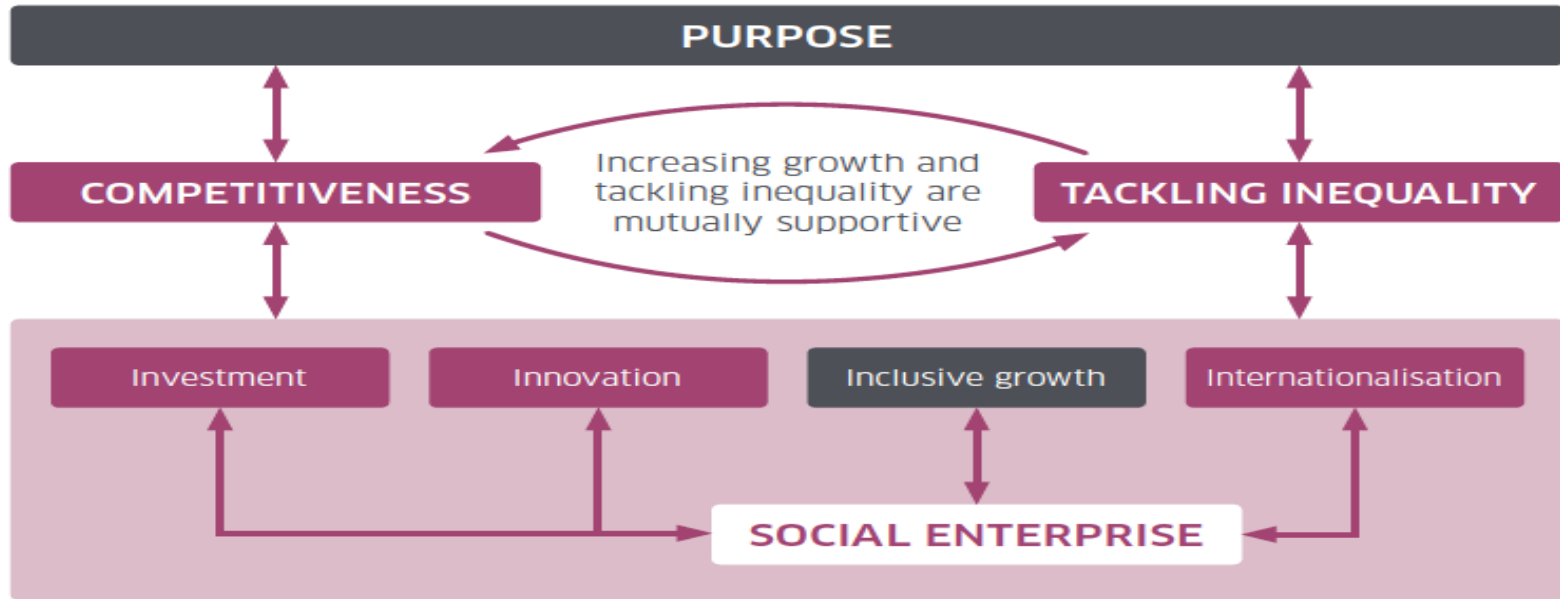
SCOTLAND'S SOCIAL ENTERPRISE ACTION PLAN



**ENSURING SUPPORT
AND GROWTH AT
HOME**

**DRIVING
COMPETITIVENESS
ABROAD**

SCOTLAND'S SOCIAL ENTERPRISE ACTIONS



Influences

Purpose and Impact

Business mapping

Sector Consortium to provide range of support from start up to leadership.

Good Practice

£5.7m – funded by Scottish Government, Third Sector Division

June 2019 – June 2023

Partner Reinforcement

Working with Scottish Enterprise Agencies and Local Authority Business Advisers

Evaluation

Additional Support:

- Social Impact Measurement
- Marketing, Comms, Digital and Online Services
- Procurement & Tendering Support
- Sector specific workforce & skills development
- Stronger integration with mainstream support delivery

SWOT Analysis

INTERNATIONAL SOCIAL ENTERPRISE OBSERVATORY

Influences

Internationalising Social
Enterprises Strategy 2016

RaiSE Study Visits

Interreg Knowledge Exchange

International Thematic
workshop

SWOT Analysis

Purpose and Impact

Delivered by Community Enterprise in Scotland to encourage global knowledge exchange, harness learning and drive impact

Funding of £70,000 in 2019-20 and longer term commitment as part of our second Action Plan.

Supported by Scottish Government

Stakeholders from third, public and social enterprise sectors

Workstreams include:

- Overseas trade
- Visibility and Influence
- International development
- Visitors and Investment
- Learning, Education and Research

INTERNATIONAL LEARNING JOURNEYS

Influences

Internationalising Social
Enterprises Strategy 2016

RaiSE Study Visits

Interreg Knowledge Exchange

RaiSE International Thematic
workshop

Social Enterprise World Forum

SWOT Analysis

Purpose and Impact

Aligned with the annual Social Enterprise World Forum

Supported by Scottish Government and key sector intermediaries

Value of annual bursaries dependent on location and costs of each World Forum – £20,000 for SEWF 2019 in Addis Ababa, equivalent to 10 full bursary places.

Impact for each participant includes:

- Access to leading international social entrepreneurs, policy makers & practitioners through
- Study visit to a range of social enterprises within host country
- Opportunity to explore and assess international markets
- International Learning Bursaries offered to a cohort of social enterprises
- Creation of a Scottish peer network - develop opportunities, provide support, encourage competitiveness



RaiSE

Interreg Europe



European Union
European Regional
Development Fund

Thank you!

Questions welcome



Project smedia