



# RaiSE

Interreg Europe



European Union  
European Regional  
Development Fund

# Policy context for social enterprises in Hungary

**Aron JAKAB**

*Head of Development of Social Enterprise Unit, IFKA*

[jakab@ifka.hu](mailto:jakab@ifka.hu)

18.06.2019 |

Interregional exchange final conference of RaiSE in Brussels

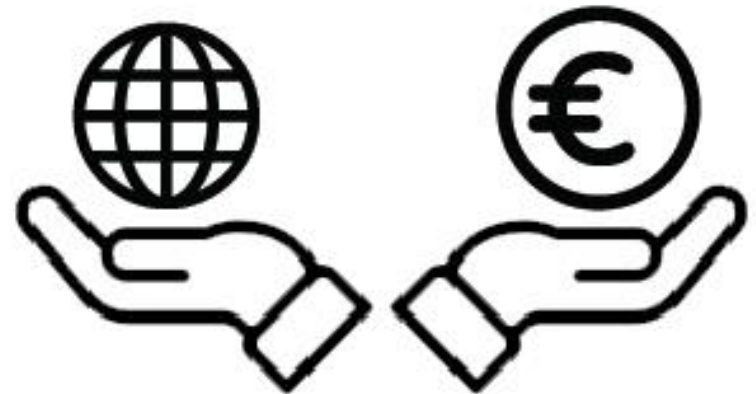
# Broad Definition of SE

social dimension

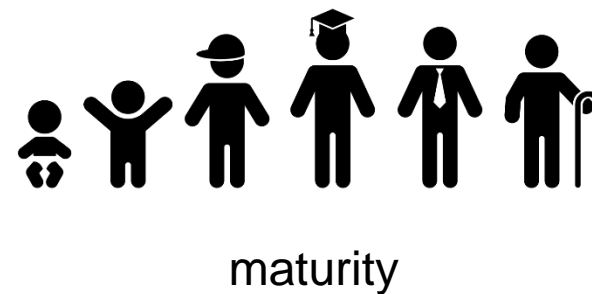
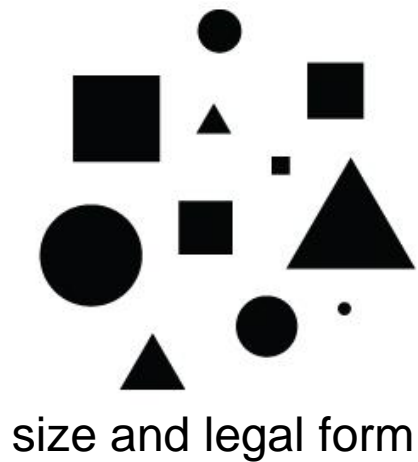
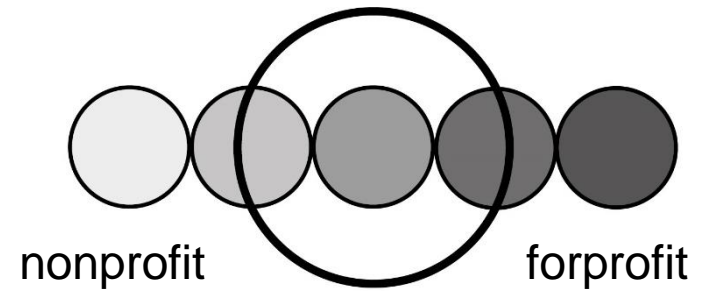
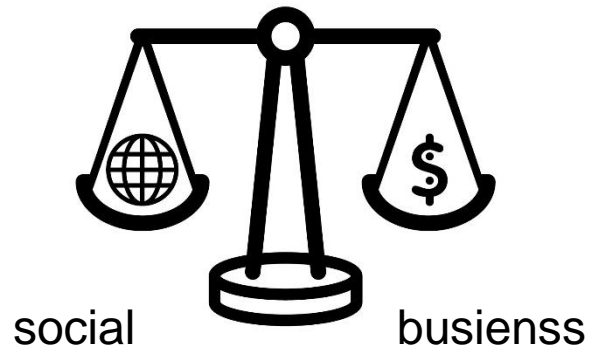
business dimension



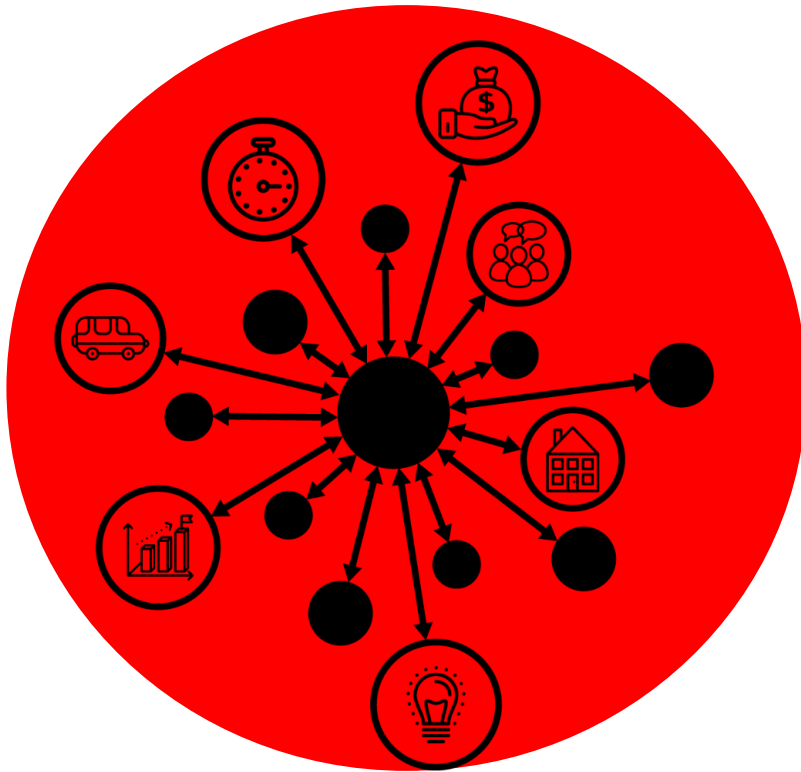
organisational/managment  
dimension



# Diverse sector



# Social impact strategy and measurement



# Growing sector of SE

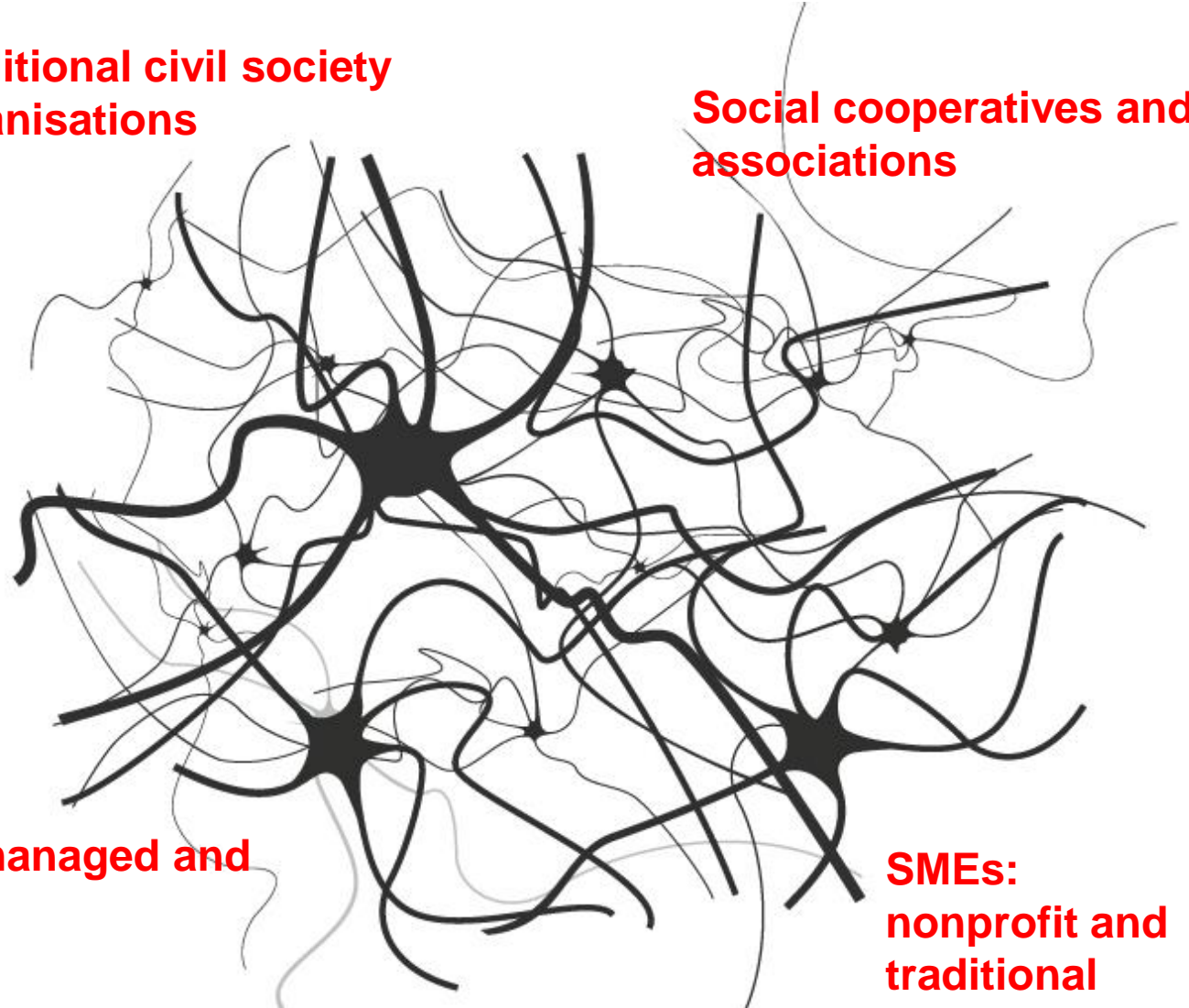


**Traditional civil society organisations**

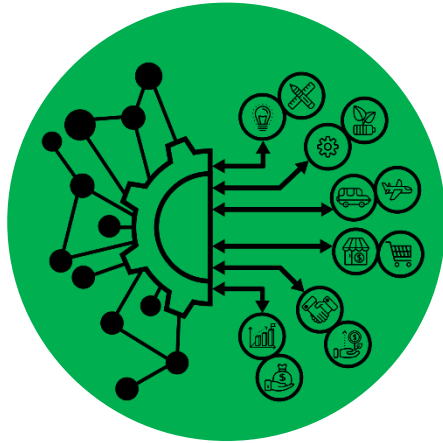
**Social cooperatives and associations**

**NGOs, state-managed and church based organizations**

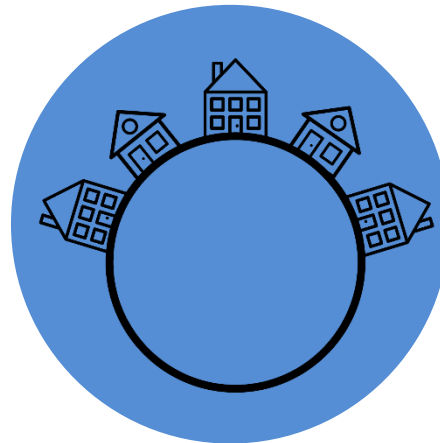
**SMEs: nonprofit and traditional**



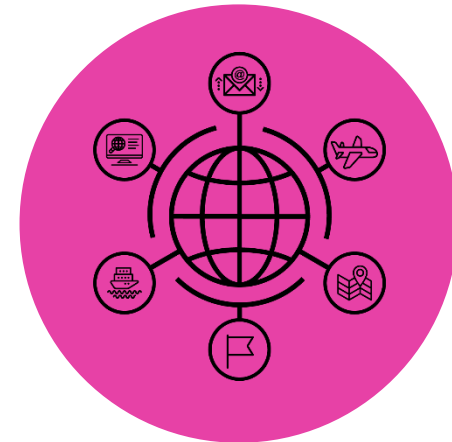
# Strategic goals



recognized economic actor



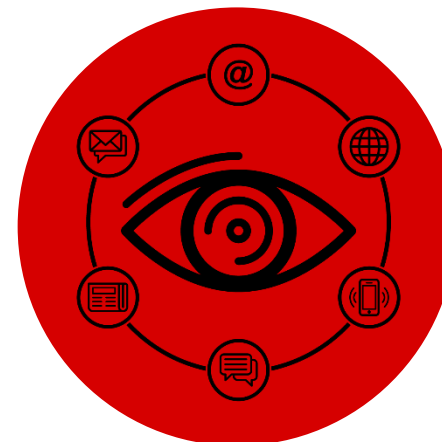
local embeddedness



internationalization

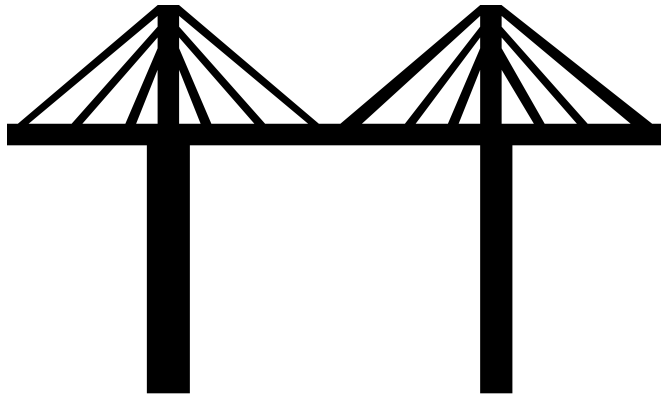


policy level recognition



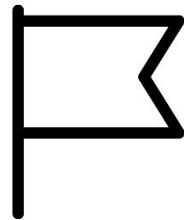
visibility

# Role of IFKA

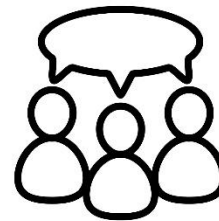


Bridging the gaps between

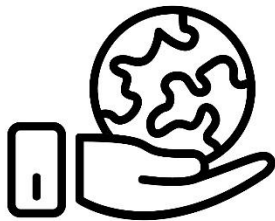
- Public and private
- Local and international
- Business and social economy



National strategy



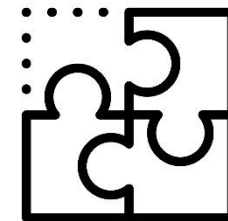
Inter-sector cooperations



Impact measurement



Access to market and



Economic development



# RaiSE

Interreg Europe



European Union  
European Regional  
Development Fund

# Thank you!

Questions welcome



*Project smedia*