

Minutes of the
INNOGROW
European Summit

Slovenia, 12/2/2019

Hosted by:
Regional Development Agency of Gorenjska, BSC, Ltd, Kranj
Rodica, Domžale, Slovenia

N.B.: Please read the document and provide viewpoints, corrections and remarks within ten working days. Subsequently, the consolidated text with the feedback of the partners will be a common decision of the INNOGROW consortium. No reaction indicates lack of objections.

Table of Contents

| | |
|----------------------------------------------|----|
| Participants | 3 |
| Abbreviations | 4 |
| Summit overview | 5 |
| Short summary | 6 |
| Company Knauff Insulation, Škofja Loka | 9 |
| Agriculture Cooperative Škofja Loka | 10 |
| Farm Pustotnik | 10 |

Participants

| Participant's name and surname | Organization's name |
|--------------------------------|------------------------------------------------------------------------------|
| Aleš Kuhar | University of Ljubljana Biotechnical Faculty |
| Anna Liscova | Latvian Rural Consultancy and Education Center |
| Aigars Lazdiņš | Ministry of Economics of Latvia |
| Aikaterini Tsolaki | Chamber of commerce of Thessalia |
| Aivars Okmanis | Zemgale Region Council |
| Artūrs Penčura | Zemgale planning region |
| Blanka Odlazek | BSC, Ltd, Kranj, RDA of Gorenjska |
| Desislava Mihalkova | Agency "European Funds for competitiveness", Ministry of Economics |
| Eleni Kamateri | Association of Thessalian Enterprises and industries |
| Francesca Cuna | Chamber of Commerce of Molise |
| Georgi Mitev | Local Initiative Group Tundja. |
| Giuseppe Colucci | Chamber of Commerce Council |
| Giuseppe Cutillo | Chamber of Commerce of Molise |
| Gri Tsia... | Region of Thessaly |
| Juliet Dimitrova | CEO of ProDroneSys - innovative startup in the field of agriculture |
| Jeremy Phillipson | The University of Newcastle upon Tyne |
| Klára Štefančová | Regional Development Agency of the Pardubice Region |
| Konstantina Spyropoulou | Hellenic Society for the Promotion of Research and Development Methodologies |
| Lidija Zeme | BSC, Ltd, Kranj, RDA of Gorenjska |
| Lorenzo Cozzi | Lombardy Foundation for the Environment |
| Matthew Gorton | The University of Newcastle upon Tyne |
| Mata Papadimopoulou | Region of Thessaly |
| Massimo Di Domenico | Lombardy Foundation for the Environment - FLA |

| | |
|---------------------------|----------------------------------------------------------------------------------------------------------------------|
| Mihaela Dineva | Stara Zagora Regional Economic Development Agency |
| M. Ciara Catsaneo | Cranec Chatolic- University of Milan |
| Nelly Grozeva | Faculty of Agriculture in Trakia University Stara Zagora |
| Nestore Mogavero | Le Acli, Association which operates in the rural world, throughout Italy, taking care of people and territories |
| Norbert Bodor | Ministry of Finance, Regional Development Programs, Strategic Planning and Evaluation Department |
| Paolo Lassini | Senior expert, former General Director of Lombardy Region DG Agriculture |
| Pavlina Damyanova | Directorate Development of rural areas, Ministry of agriculture, food and forestry |
| Petra Smuts | Regional Development Agency of the Pardubice Region |
| Rosa Fanelli | University of Molise, Economics of agro-industrial companies and of Economics and management of the agri-food system |
| Robin Langer | Pardubice business incubator |
| Sandra Muižniece –Brasava | Latvian University of Life Sciences and Technologies, Technology Transfer Center |
| Sanita Larionova | Zemgale planning region |
| Vatics László | Pannon Novum West-Transdanubian regional |
| Vesna Miličić | Ministry of Agriculture, Forestry and Food |
| Venelin Dobrev | Stara Zagora Regional Economic Development Agency |
| Viesturs Reinfelds | Latvian Rural Support Service |
| Zoi Papathanasiou | Papagiannis bros (Industry Halva, sesam paste, sesam sweets. |
| Zoltan Kalcsu | Pannon Novum West-Transdanubian regional Innovation Non-Profit Ltd |

Abbreviations

AF: Application Form

M(x): Month x since project start

JS: Joint Secretariat

RDA: Regional development agency

Summit overview

Agenda



INNOGROW EUROPEAN SUMMIT



AGENDA

Tuesday, 12th of February 2019

Biotechnical Faculty Ljubljana
University Department in Rodica
Groblje 3, 1230 Domžale

| | | |
|---------------|-----------------------------------------------------------------------------------------------|------------------------------------------|
| 8:15 - 8:30 | Gathering and departure from the hotel | |
| 8:45 - 9:00 | Registration | |
| 9:00 - 9:15 | Welcome speech | Ms. Lidija Zeme, Mr. Aleš Kuhar |
| 9:15 - 10:00 | Transition to bio economy and implications for economic convergence of rural areas | Mr. Luka Juvančič |
| 10:00 – 10:30 | Rural Enterprise Hubs: lessons from the UK | Mr. Matthew Gorton, Mr. Jeremy Philipson |
| 10:30 - 10:45 | Coffee break | |
| 10:45 - 11:15 | Hungarian Territorial Operative Program | Mr. Norbert Bodor |
| 11:15 - 11:45 | The Technology Transfer Centre's Support for the Innovation Adoption in the rural SMEs | Ms. Sandra Muižniece-Brasava |
| 11:45 - 12:00 | Conclusions of the first part | Ms. Lidija Zeme, Mr. Aleš Kuhar |
| 12:00 - 13:30 | Lunch | |
| 13:30 - 14:00 | Transfer to on site Workshops | |
| 14:00 - 15:30 | On site Workshops – Knauff Insulation (Insulation material Škofja Loka) | |
| 15:45 - 17:15 | On site Workshops – Agriculture Cooperative Škofja Loka | |
| 17:30 - 19:00 | On site Workshops – Farm Pustotnik (Cheese & Dairy Farm, , Gorenja vas) | |
| 19:00 - 19:30 | Return to the hotel | |
| 20:30 | Social Dinner | |

Short summary

Group of transnational delegation of INNOGROW partners and stakeholders gathered at hotel Intercontinental in Ljubljana around 8 o'clock am. The bus transfer was provided to Domžale to the Biotechnical Faculty Ljubljana University Department in Rodica. The summit started with the welcome speech of Mr. Aleš Kuhar, professor at the Biotechnical Faculty Ljubljana, followed by welcome speech of Lidia Zeme, Slovenian project manager for INNOGROW project.

After the welcome speeches presentations followed according to the agenda. All presentations are available in the INNOGROW on-line repository Freedcamp, unced C Project management activity, C1.4, Slovenian meeting, presentations.

Lessons learned and addressed policies:

- From United Kingdom, Newcastle University

The following policies were presented:

Policy for the connectivity to rural areas: Northern Powerhouse and Midlands Engine attempt to close north-south gap in development and cover large territory. Majority of money was dedicated for transport infrastructure but some business support (e.g. SME finance) in order to support connectivity to rural areas.

Policy for Local Enterprise Partnerships (LEPs) largely at sub-regional level provide enterprise and business support and develop Local Industrial Strategies.

Lessons learned from those policy implementation researches were that overall, enterprises in the North and Midlands underperform compared with counterparts in London and South East. They underperform in terms of productivity (output per worker), turnover, sales growth and exporting. However, firms in North and Midlands are more likely to report that they are profitable

Rural SMEs located in the North and Midlands do not underperform their urban counterparts: rural firms are not less innovative nor less likely to export, city focus in regional development initiatives appears misplaced. Enterprises in North & Midlands have lower levels of (private sector) network capital. They are less likely to co-operate with clients and customers on innovation, and be part of social media, formal and informal business networks. They are missed market opportunities, learning from others etc. require assistance in generating appropriate networks.

The Determinants of SME Productivity: process innovation is likely to improve productivity, while product (goods or services) innovation does not substantially improve productivity. Local Chamber of Commerce and Social media network have a positive contribution to productivity. A capability for accessing external finance is positively associated with productivity. The sectoral composition of the economy matters: e.g. Primary (+), Manufacturing (+), Construction (+), Wholesale and retail (+), Financial and real estate (+) & Health and social work (-). Sole traders have lower level of productivity. Younger firms tend to have lower productivity.

Policy: Rural enterprise hubs as a mechanism for facilitating rural enterprise innovation and growth.

Lessons learned from the research of this policy implementation are:

Hubs can facilitate growth of home-based businesses, providing an important stepping stone. The home based businesses originate from the family businesses and are not comfortable employing non-family member(s) in family home. In this kind of business the line between work and home life is often blurred. Business address signal legitimacy, which means that when the business gets to the marketing it may have more legitimacy if not being a home address. When business grows it gradually requires more space which a home may not provide, therefore a new location needs to be found, consequently connected to costs. Rural hubs provide a desired space for an affordable price. Tenants desire flexibility and ability to grow and shrink workspace rented, short and renewable contracts and private rather than hot-desking facilities.

Hubs can facilitate business innovation. Hubs are potential mechanism for delivering training and knowledge exchange to rural SMEs. They facilitate business interactions (some spontaneous, others through planned events). Competence of the hub manager is critical for facilitation.

- From Hungary, Ministry of Finance, Managing Authority for Regional Development Programmes CLLD Department

Policy: Territorial and Settlement Development Operational Programme, Priority 1 of the TSDOP – Measure 1.1 and Priority 7 of the TSDOP - CLLD approach in Hungary

The main innovation is the bottom up approach to changing policy measures for rural development and new approach in implementation (Territorial Selection System (TSS)) which are expected to reduce competitiveness for funding among local communities, distribute financial means according to the needs this significantly contribute to rural development and implementation of innovation by financing costly project preparation→ changing structure.

The Integrated planning System includes:

1. Situation analysis resulting in
2. Territorial development concept influences
3. Towns with county rights providing settlement development concept and Integrated settlement development strategy which influences
4. Integrated territorial Programme in consistency with County plans which policies and measures are then communicated to Territorial and Settlement Development OP

Territorial development concept further contributes to the preparation of Territorial Development Programme including Strategic programme, transferred/influencing also Integrated territorial Programme, Operational programme.

From the Territorial Development Programme is the base for the preparation of the Integrated development programme identifying the development needs for sectoral OPs and identified development needs for TOP. This influences sectoral OPs.

The Integrated territorial Programme policies and measures are then addressed in the Territorial and Settlement Development OP.

Policy: CLLD in Hungary as a part of Priority Axis 7 of Territorial and Settlement Development Operational Programme 2014-2020 (TSDOP)

Main purposes:

Development of cultural and community spaces and services

Strengthening local identity

Enhance local community participation and awareness in order to develop local and community based economies

Program based bottom-up development at urban level

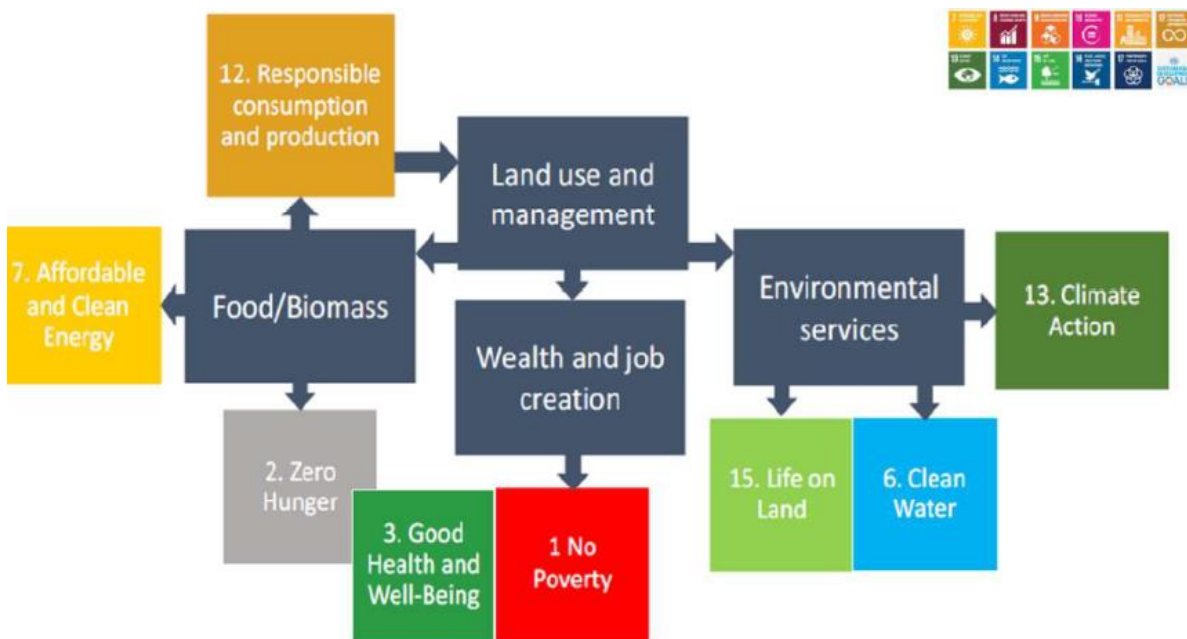
New instrument:

Local development programs use simultaneously and in a coordinated manner ERDF and ESF

- From Slovenia, University of Ljubljana, Biotechnical faculty

Policy: EU Bioeconomy Strategy (2012, 2018) (presentation)

The emphasis is on the sustainable and circular economy regarding the bio economy, which can preserve nature and restore healthy ecosystems; create 1M of new green jobs by 2030, in particular rural and coastal areas; turn waste from cities, farming, food and forests into new added value products; provide additional income for farmers, foresters and fishermen; replace fossil material with renewable alternatives, increase the carbon sink capacity of soil forests and oceans; develop new biodegradable products, including bio-based plastic substitutes.



At noon the 1st part of the summit concluded.

After lunch partners drove by bus to the study visits to:

- Knauff Insulation, Škofja Loka
- Agriculture Cooperative Škofja Loka
- Farm Pustotnik (Cheese & Dairy Farm, Gorenja vas)

Company Knauff Insulation, Škofja Loka

In the company of Knauff Insulation introduced their products, sustainable low energy building – their own, which is under testing for the innovative energy saving solutions with an aim to set new standards on the European level - and transnational projects of green roofing.

Presentation was divided in three parts; first part of presentation was accompanied by power point presentation, second took place in their show room of different types of isolation and the third was on the spot showcasing of the green roof.



INNOGROW GROUP AT OUR NEW KNAUF INSULATION EXPERIENCE CENTER (KIEXC) <https://www.urbanscape-architecture.com/news/innogrow-group-at-our-new-knauf-insulation-experience-center-kiexc/>

“Barbara Hafner welcomed visitors and presented our new Experience center, which is a unique demonstration of different advanced sustainable insulation solutions in construction, including Green infrastructure solutions. KIEXC was awarded the Platinum DGNB Certificate at the BAU exhibition in Munich in January 2019.

Professional on Green solutions, Jure Šumi, presented visitors Urbanscape solutions for Green roofs, landscaping, city farming, horticulture and home gardening and showed some Urbanscape reference projects in NY, Dubai, Sweden, Germany, Spain...

After presentations, Urbanscape Green solutions used in horticulture and home gardening was presented to visitors, which were interesting attraction and useful solutions for the INNOGROW group.

For the end of event, the INNOGROW group was delighted with the sunny view from the Urbanscape® Green roof on KIEXC.”

Agriculture Cooperative Škofja Loka

Director Mitja Vodnjov presented the history and origin of the Cooperative and its current members, quality standards that cooperative follows and the politics. Cooperative has 6 food stores with Slovenian food and 5 technical stores. Their business is buying and selling milk and dairy products, wood, meat and meat products, life stock and other farm products and produce from the local farmers. They also own a slaughter house and a coffee shop. The cooperative promotes 5 Slovenian quality produce brands from Gorenjska region (Loške mlekarne, Domači kotiček, Loške mesnine, Mesnine Bohinj and Arvaj).

They try to stock their shelves with quality home-made products and delicacies from local producers and suppliers. In the grocery stores there are specially designed home corners where you can get quality ecological and homemade treats in one place.

The Loška mlekarne unit is concerned that our dairy products are produced from non-homogenized domestic milk Poljanska and Selška valleys and Škofjeloška okolica.

Under the trademark of Loška mesnina (meat products), they offer quality fresh meat and meat products, while the beef they offer is exclusively Gorenjska, breeders known.

Bohinj's meat products are synonymous with traditional homemade smoked and cured meat dishes, since all the meat products are made according to traditional procedures, with recipes over 50 years old. Raspberries are traditionally smoked in a smokehouse on beech wood of local forests.

The brand Arvaj is famous for its unbeatable carnivorous sausage, considered one of the best. The plant also boasts delicious boiled sausages. More about products at: www.arvaj.si

Farm Pustotnik

Farm Pustotnik is a family farm and the INNOGROW group was greeted by the younger representative of the family. He introduced their core business, which is milk production and dairy products. They also have a shop with their own products and different products (spirits, jams, honey ...) from other local farmers.

“The quality of milk is one of the most important factors that determine the quality of homemade dairy products and cheeses. Therefore, we pay special attention to the well-being of our cattle.”

“Our herd consists of approximately 40 dairy cows, which all belong to the black-and-white breed. The cattle are fed grass haylage, which is produced on 25 hectares of cultivated areas; to increase the nutritious value of their meals, we supplement the haylage with a mixture of cereals, vitamins and minerals. Our cheese dairy processes not only cow’s milk from Pustotnik farm, but also

sheep's and goat's milk from our partner farms, which are located in different parts of the Poljane valley and deliver their milk to our farm every morning."

Visit and learn more about the INNOGROW study visit on the farm Pustotnik clicking the link: <https://www.kmetijapustotnik.si/en/get-to-know-us/our-farm/>