

SAMEN WERKEN



A MATTER OF TRUST

Cooperation on Historic Castles, Manors and Estates in the Province of Gelderland (NL)

Paul Thissen

Coordinator Heritage Program
Province of Gelderland



≡ provincie
Gelderland

Stakeholder meeting Târga Mureș (Ro), 22th of October 2019

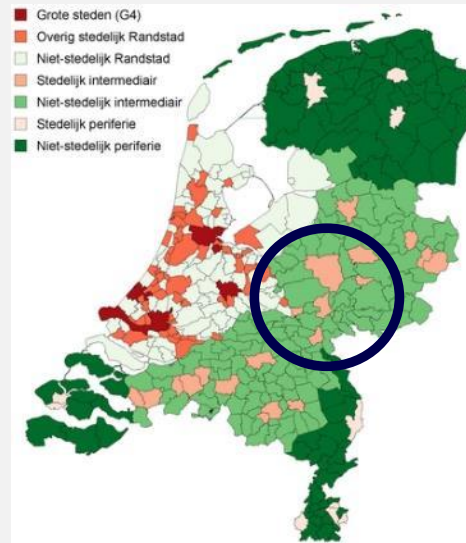
Province of Gelderland - Geography

The Netherlands in Europe



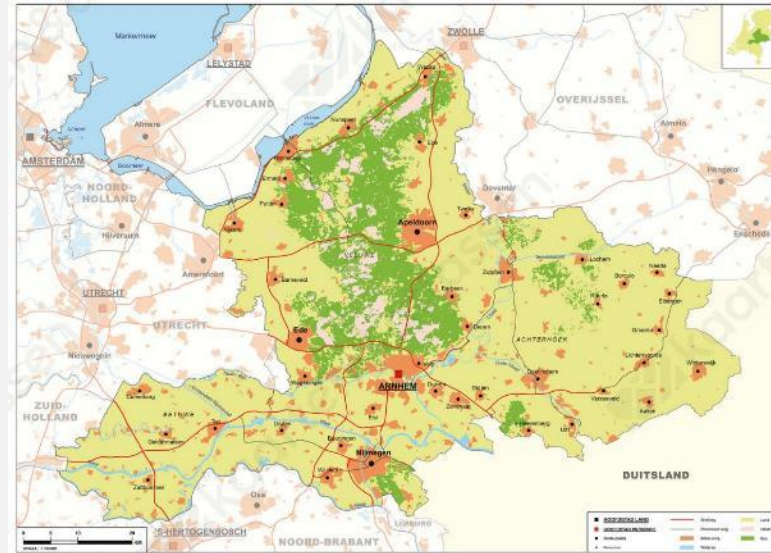
Doormelle.nl

Gelderland in the Netherlands



Nidi.nl

Province of Gelderland



Kaartenenatlassen.nl

- 2,1 million inhabitants
- intermediate position: urban and rural
- largest cities: Nijmegen, Arnhem, Apeldoorn



1958

House of the Province, Arnhem



2018

Source: VolkerWessels.com

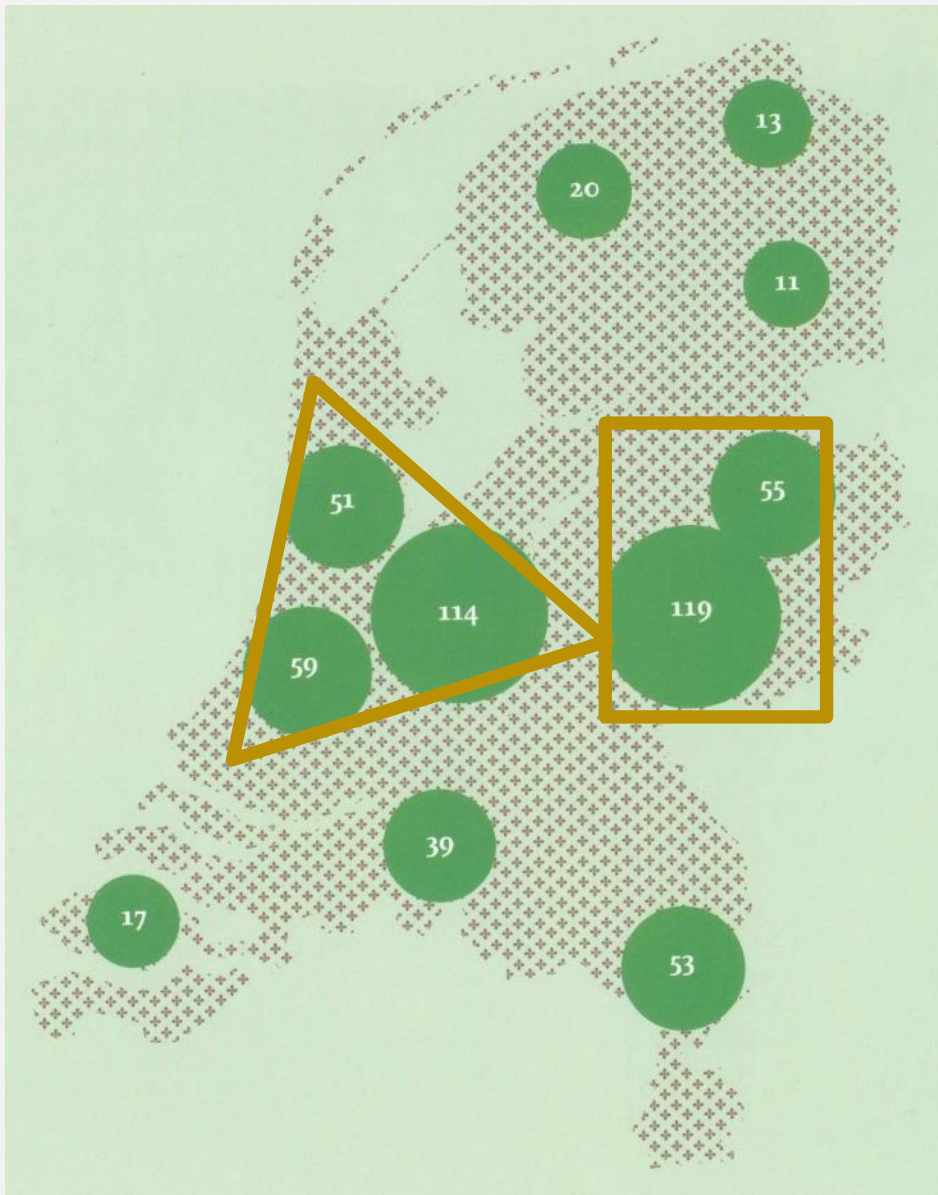
Province of Gelderland - Government

- regional authority, elected bodies
- responsibilities
 - Spatial planning, water policy
 - Regional road network, public transport
 - Nature and Heritage conservation and development

Innocastle
Interreg Europe

KaDEr

HCME in the Netherlands* - distribution



Holland
+
Utrecht

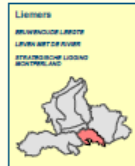
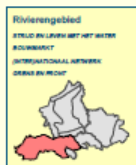
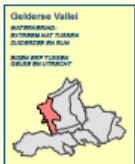
Merchants

Gelderland
+
Overijssel

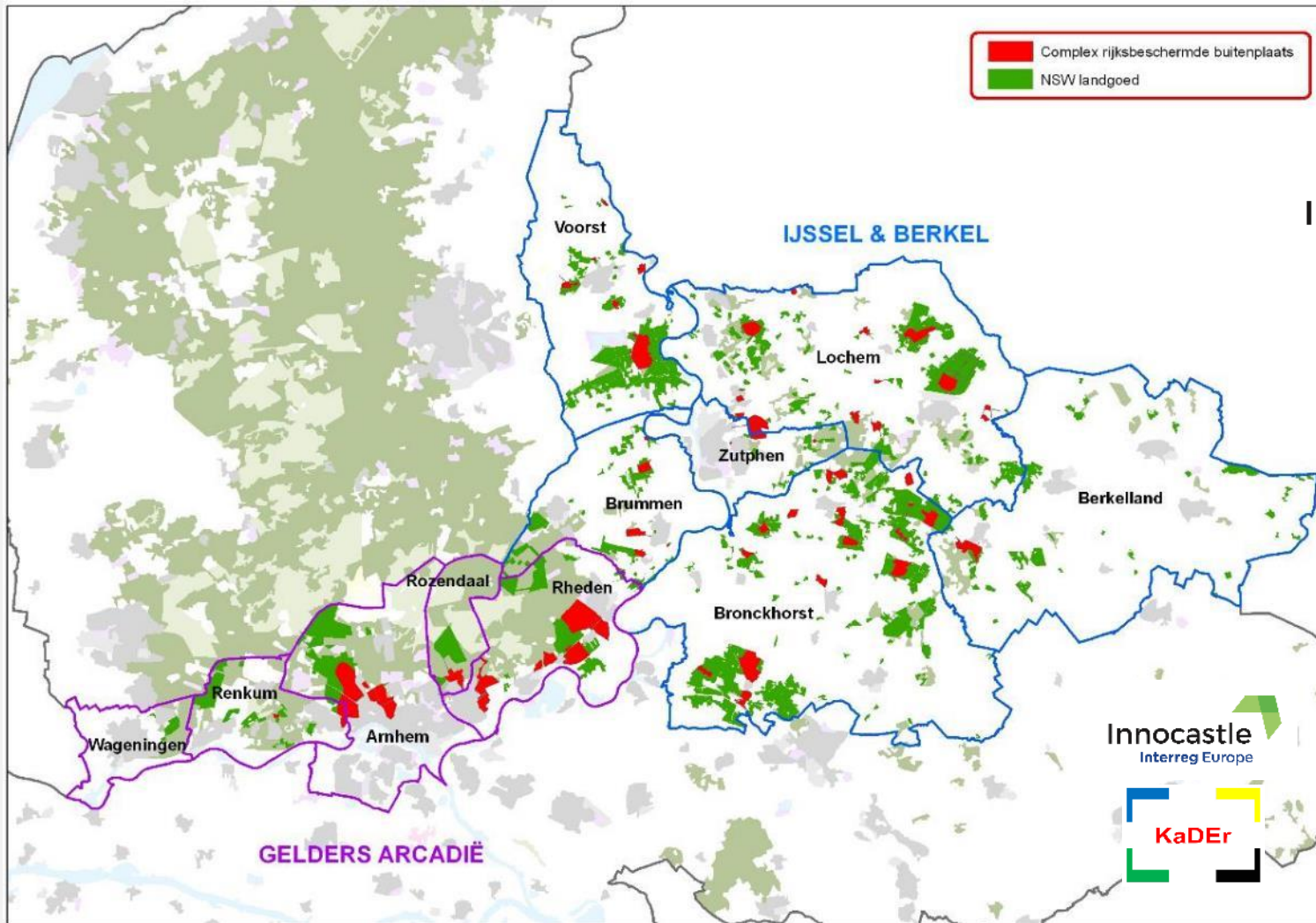
Nobility

*only the A-listed ensembles

Winterwijk Plateau
GRITTEN LIGING
KLINISCHALLO BOPPELAND
SCHOLTHOUDEREN



Most valuable concentrations of HCME in Gelderland



Innocastle
Interreg Europe

Innocastle
Interreg Europe

KaDEr

Gelders
Genootschap



A-listed under Heritage Law



Protected Estate Landscape 'Natural Beauty' Law

HCME in Gelderland



HCME in Gelderland: water is important feature



Conservation Pays!

Results research 2012

In area's rich in HCME

- €1 spent on conservation -> €2,5 - 4,4 benefit
- Who benefits:
 - o tourism and recreation
 - o people living next to HCME

NOT the owners!

Priority program since 2013

- customized permit
- introducing low-interest loans
- subsidies for unprofitable restorations
- network approach on urgent themes: working together

Witteveen  Bos

Innocastle
Interreg Europe

Historische buitenplaatsen
en landgoederen
In stand houden loont!



'Economische betekenis van historische buitenplaatsen en landgoederen in de provincies Utrecht, Overijssel en Gelderland'. In opdracht van de provincies Utrecht, Overijssel en Gelderland.

juli 2012



e.g. Sevenaer Castle and Farm

- decades of problems private owner <-> municipality came to an end
- municipality: castle and farm add quality to our town
- owner: identity is 'oldest castle farm'
- revitalization takes time
- economic important and profitable matters first
 - o Restauration monumental cowshed -> meat production
 - o Reorganizing volunteers working in kitchen garden
 - o -> restaurant serving own food 'Eat Local'
- Province and owner invest – owner shares results



e.g. local cooperation:

Crown Jewels of Bronckhorst – a shared responsibility

Kroonjuwelen van Bronckhorst *een gezamenlijke verantwoordelijkheid*

26 november 2013



Platform of local owners,
private and other and local
authorities

Talks and ateliers in
confidential setting ->
appointments

Heritage quality <->
economic development

Other items such as fighting
water problems

Bron: Bureau Strootman 2013, Kroonjuwelen van Bronckhorst



e.g.

Challenge Tourism

- sustainable tourism
- finding a balance between heritage and tourism
- know your story
- learning from each other, help by professionals
- marketing research and campaign

<https://www.holland.com/global/tourism/holland-stories/castles-and-country-houses.htm>

Source:

<https://geldersestreken.nl/macht-en-pracht/>



Cooperation and Partnerships 'dialogue, learning, doing' in Innocastle



Municipalities

Rheden, Arnhem,
Renkum, Wageningen,
Rozendaal
Bronckhorst, Zutphen,
Lochem, Voorst,
Brummen

Other authorities

Province, Waterboards,
National government

Owners

private, trusts, nature organisations

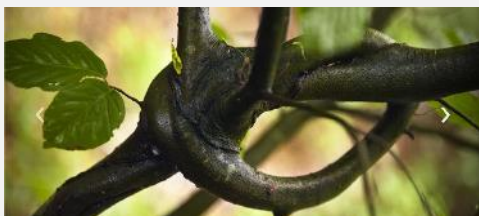
Gelderland Society

Companies

TU Delft

sKBL

GRC+MW



Gelders Arcadië, Cultuur- en Erfgoed-
pact, Langs IJssel en Berkel, KaDer,
Innocastle, Castles and Country Houses

