



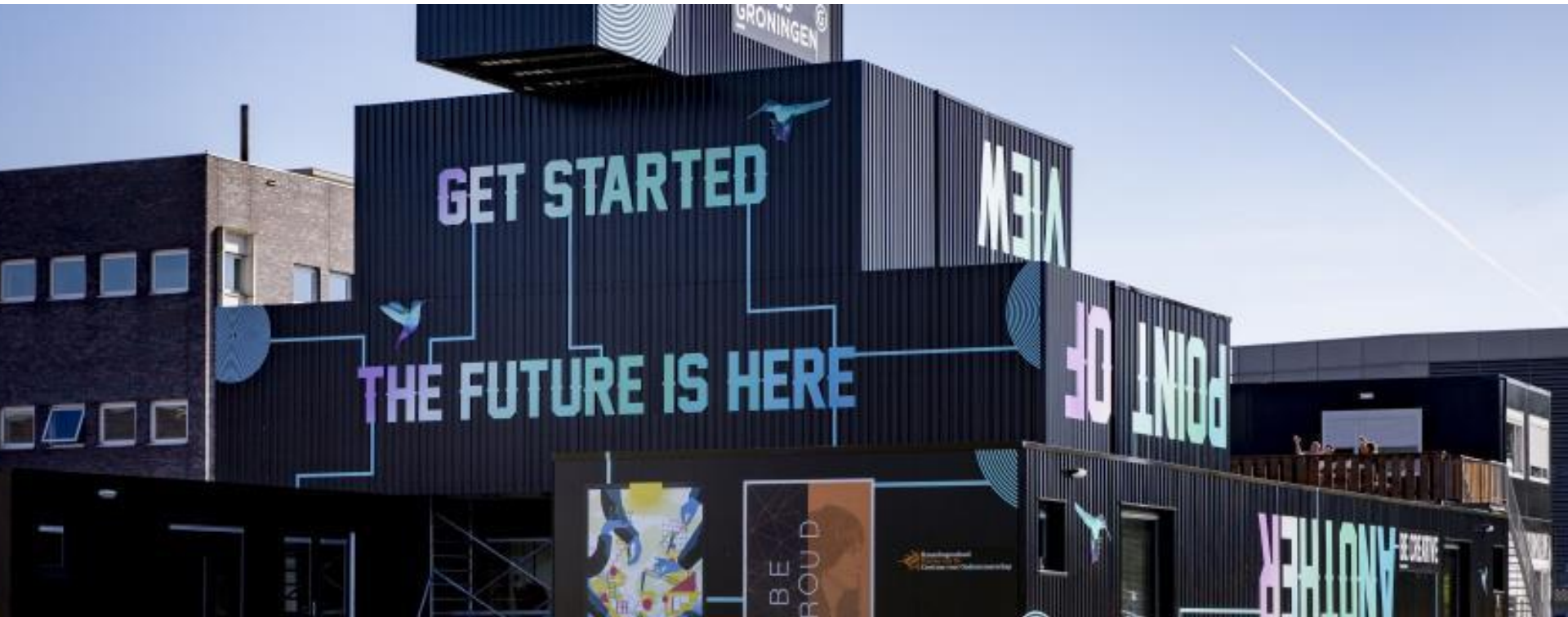
Hanze University of Applied Sciences

Dr. Madelon van Oostrom

Researcher, Centre of Expertise for Entrepreneurship
Lecturer Innovation & Research, School of Communication, Media & IT

m.van.oostrom@pl.hanze.nl

Engaged university, engaged learning



Working together students, teachers, researchers and professionals from the field on relevant research questions and societal challenges.

Hanze University of Applied Sciences (HUAS)

Strategic themes:

- Healthy Ageing
- Energy
- Entrepreneurship

29.457
students

Knowledge infrastructure

- 18 schools
- 3 centers of expertise
- 3 knowledge centers
- 42 research groups

3.348
employee
es

Innovation:

- 100 Innovation labs
- 368 startups
- 569 strategic collaborations with firms and external organizations

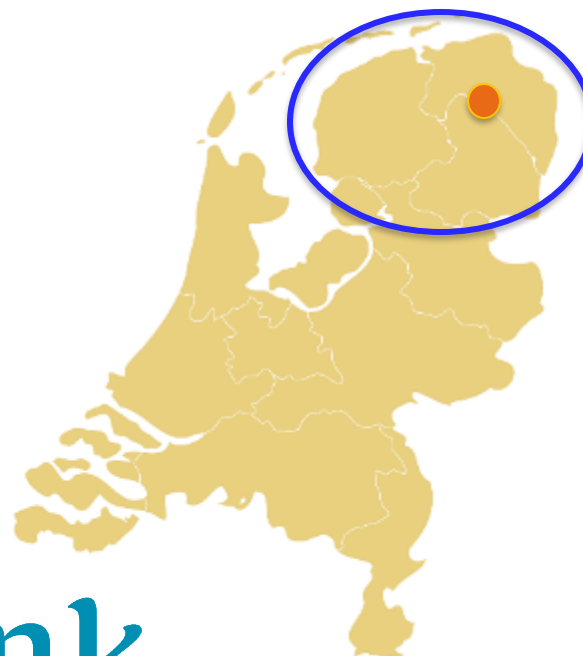
Student
satisfact
ion: 7,3



**HUAS is in the Global top 5 in
the category**

graduated companies

www.umultirank.org 2019



Report on a Learning Economy (Scientific Dutch Council 2013)

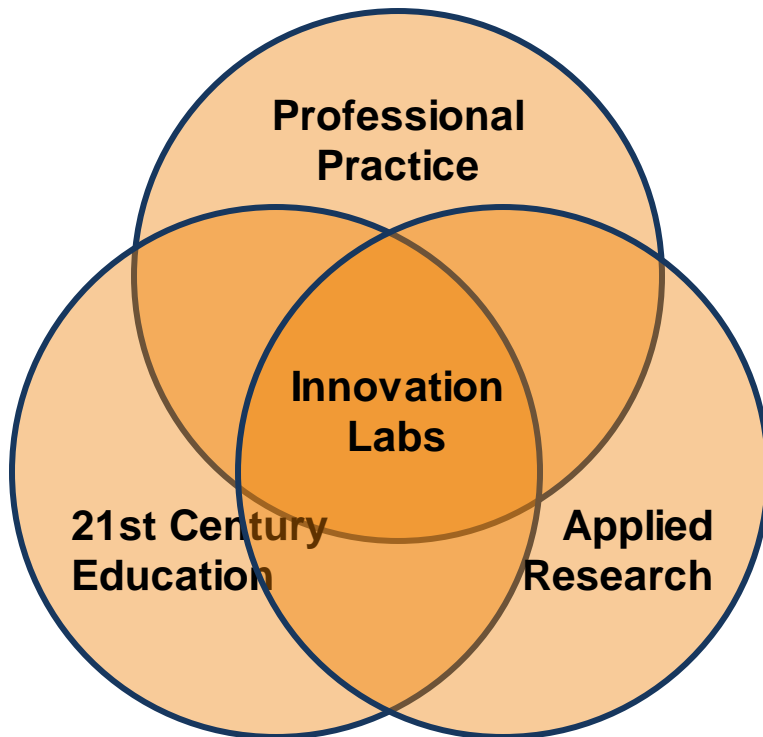
“Most impact on Innovation and Regional Development is expected from Universities of Applied Sciences”

From a knowledge economy towards **knowledge circulation**



What does this mean for HUAS?

From a teaching to a learning community



> 100 innovation labs

- Contributions to Society: addressing challenges and **complex problems**
- University – Business **Collaboration**
- Increased **integration** of practice into education & research
- Learning outcomes AND project results: **regional impact**
- Students **learn**; teachers **learn**; professionals **learn**

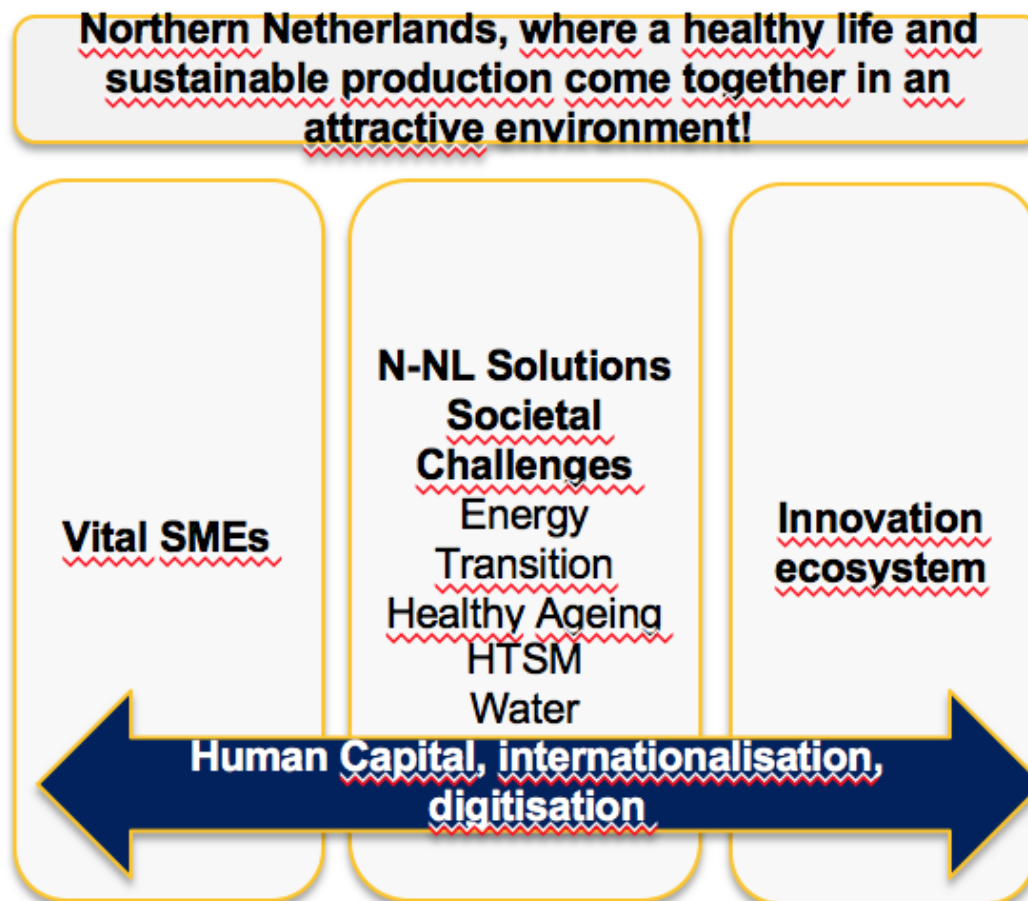
Strategic plan Hanze University of Applied Sciences



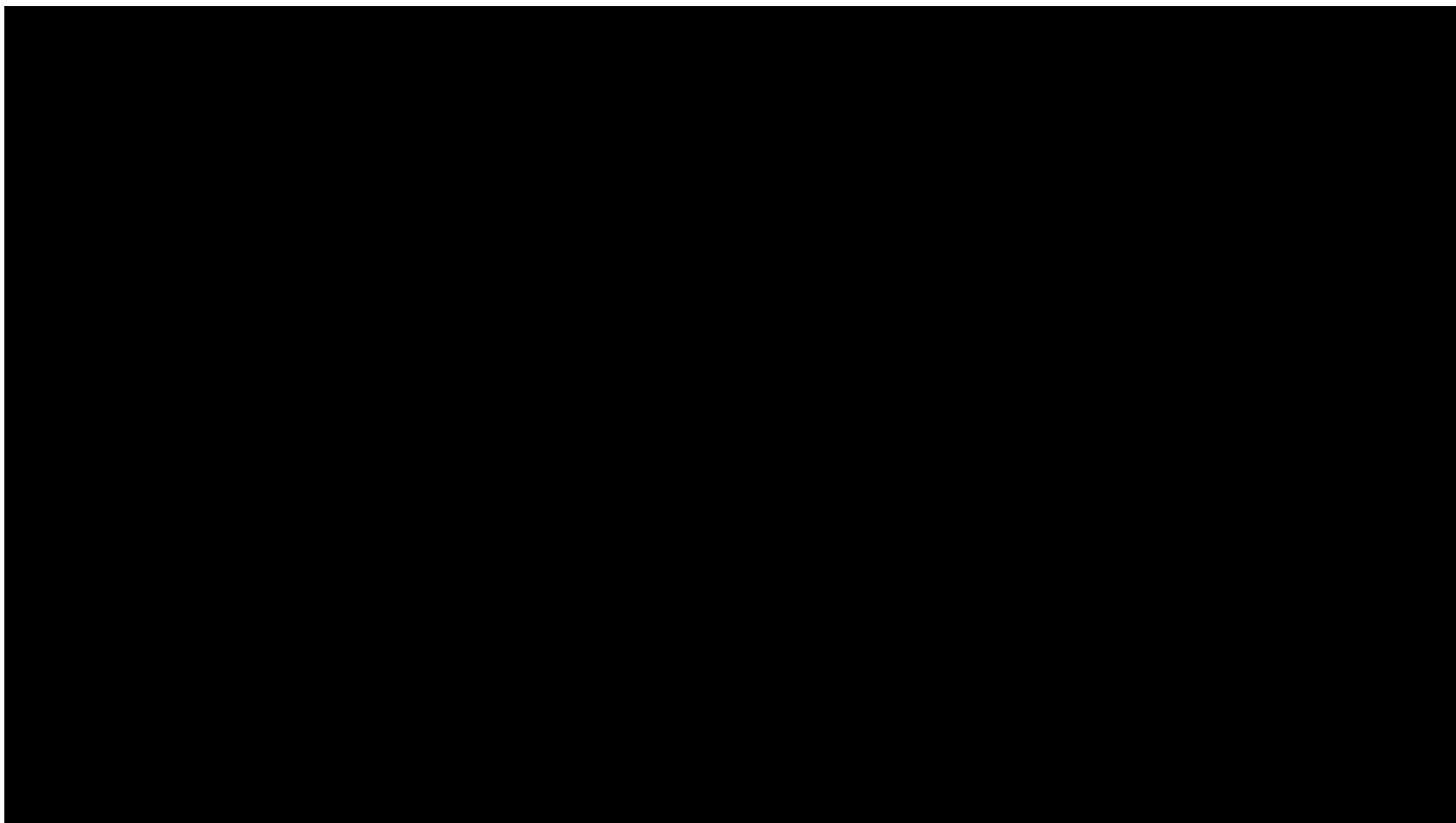
“In 2020, every student will contribute – at least once – a semester to an Innovation Lab”

This means that each semester 3000-3500 students will share their talent with the region

Alignment with the Regional innovation Agenda of North Netherlands



Let's wrap it up!





InnoHEIs

Interreg Europe



European Union
European Regional
Development Fund

Thank you!



Questions welcome



@InnoHEIs