

[View this email in your browser](#)



Did you know that when people work together, solutions come easily?

We are in the middle of the first phase of our Project and we have realised that the best knowledge is thanks to connecting people from several countries, with different habits, cultures and traditions.

Talking about storytelling, we ask some stakeholders and rural retail experts their opinion about SARURE project after taking part in Swedish meeting last September 2019:



Visit our website to learn more about us

www.interregeurope.eu/sarure



1-SARURE meeting in Freyburg (Germany)

The 19th and 20th June 2019 we celebrated the third SARURE project meeting in Freyburg (Germany).

We exchanged **12 Good Practices** as scheduled in the programme of this **first Thematic Seminar** about *'Complementary services & initiatives to retail in rural areas'*.



[Read more here >>](#)

2-SARURE meeting in Söderhamn (Sweden)

The 25th and 26th September 2019 we celebrated another SARURE project meeting in Söderhamn (Sweden) where we exchanged **11 Good Practices**

exchange of experiences session. Moreover, lead partner presented the conclusions of the mapping analysis produced and we discussed about sales regulation and opening time shops in SARURE territories.





[Read more here >>](#)

3-New way of thinking needed in producing retail services in rural areas (Finland)

Rural, sparsely populated areas need to maintain their basic services to stay alive and populated in future. In Finland these basic services contain essentially shops and markets offering food and daily consumption goods.



4-Greek developments to support retail and SMEs

Greece and specially the Region of Western Macedonia have identified the need to support retail and SMEs and coordinate national and regional programs based on EU directives. Thus, making invitations for calls for tender and providing financial support to businesses. In this article you will find embedded the Partnership Agreement for the Development Framework of the Ministry of Finance and Development that is connected with the regional programmes of regional development from PA.

More info here >>

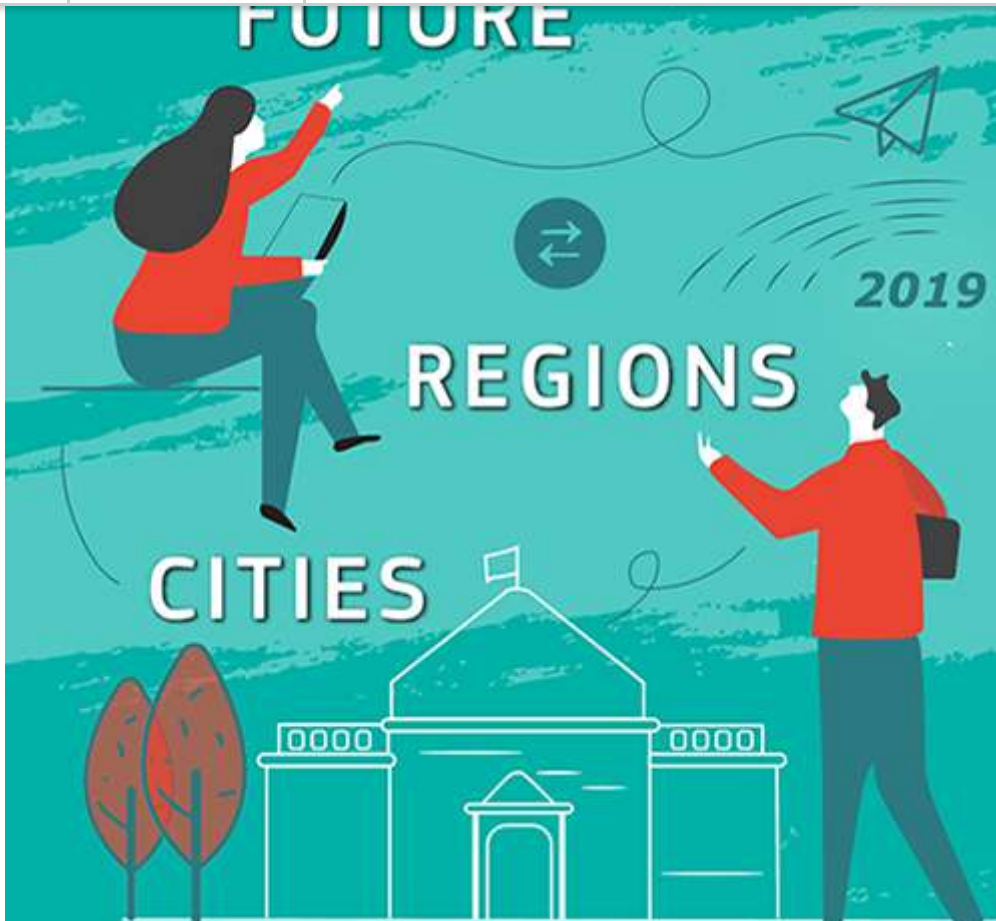
5-Check out the [Good Practices](#) section on our website

A new 'Good Practices' section is now available on our website, where you will find our project Good practices that we have shared each other in the different Thematic Seminars.



[Discover it here >>](#)





1-Greek partner participates in #EURegionsWeek

Last October *Mr. Evangelos Katsaros*, our Greek partner, attended the European Week of Regions and Cities where he had an interesting discussion with Interreg Europe policy representatives and he identified synergies, complementarities and further cooperation with another projects.

[Read more here >>](#)



2-Facebook group for Interreg Europe projects

targeted updates from the programme.

[More info >>](#)



3-Tubbercurry Old Fair Day Festival (Ireland)

The 34th Tubbercurry Old Fair Day Festival, which opened on Saturday 10th August with the Teddy Bear Picnic and run to the highlight of the festival – the Tubbercurry Old Fair Day on Wednesday 14th August. A five-day festival August in Sligo for all the family to enjoy.

[More info >>](#)



4- Next partners' meeting in South Karelia (Finland)

The next partners' meeting is foreseen in Spring 2020 in [Lappeenranta](#) (Finland). This Thematic Seminar will be about '*Innovative financial and promotional options for Rural Retail SMEs*' and until then, each partner is working in good practices in relation to this topic.



How can you help us?

- Participate in our local [stakeholders groups](#)
- Send us examples of your [good practices](#)
- Let us know about your project or event regarding rural retail
- Share this newsletter with your colleagues
- Contact us by [email](#) or through [our social media](#)

STAY IN TOUCH!



Copyright © 2019 SARURE - Interreg Europe, All rights reserved.

You are receiving this email because you registered with the SARURE mailing list

Our mailing address is:

SARURE - Interreg Europe
Les Arcuriales, Entrée D, 5e étage, 45 rue de Tournai
59000 Lille
France

[Add us to your address book](#)

Want to change how you receive these emails?

You can [update your preferences](#) or [unsubscribe from this list](#).