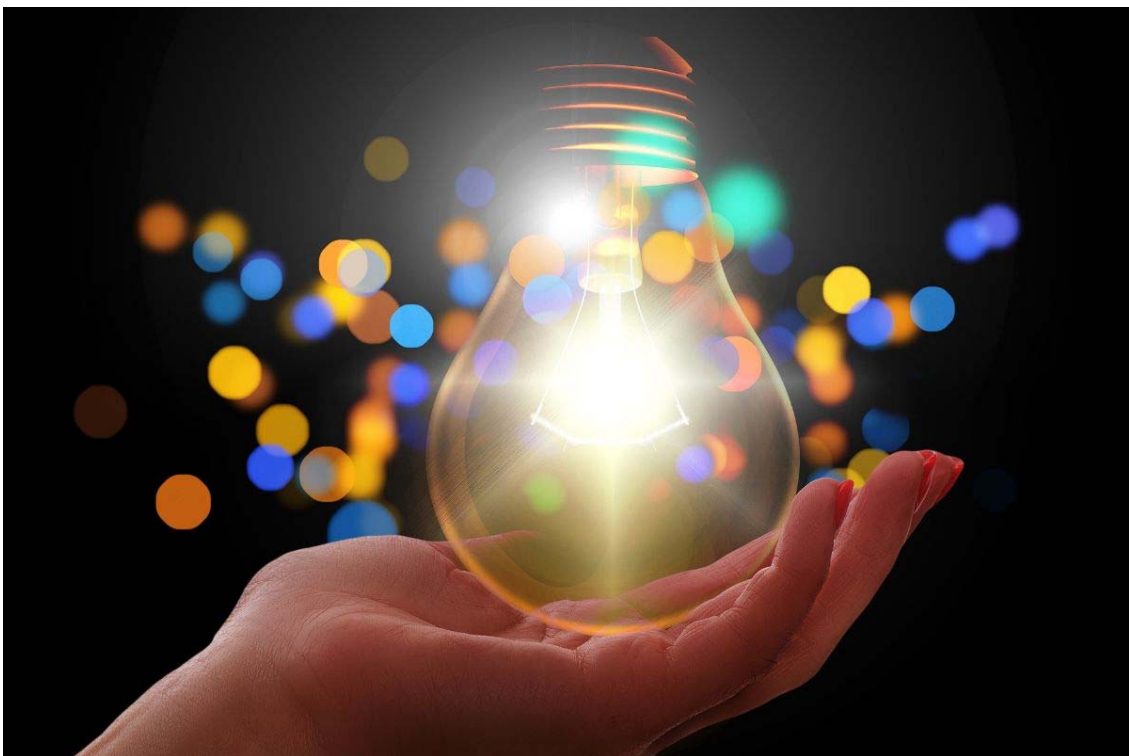


[View this email in your browser](#)



InnoHEIs project keeps on going!

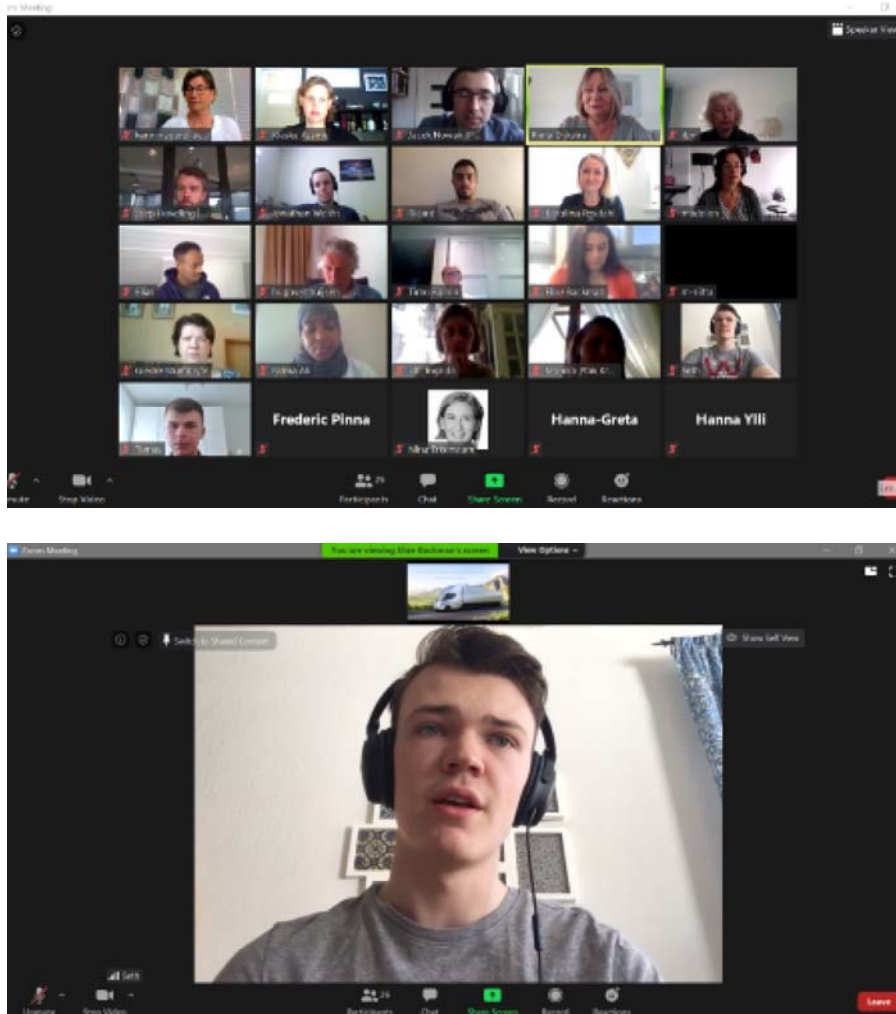
We live in strange times, especially for international projects like InnoHEIs. The partner meetings planned in Barcelona and Mid Sweden couldn't go through due to COVID-19 measures. It was a pity the team could not meet in person. Instead all partners met online twice to share and learn about research and innovation infrastructure!

The [first online session](#) with all the partners was end of March, when we were supposed to see each other in the region of Catalonia. Partners discussed the

Subscribe Past Issues

regional diagnosis they are preparing for the project: what are the research and innovations structures like in the different regions? The interview with the Risk and Crisis Research Centre in Mid Sweden is part of this. More results will follow soon.

Tr:



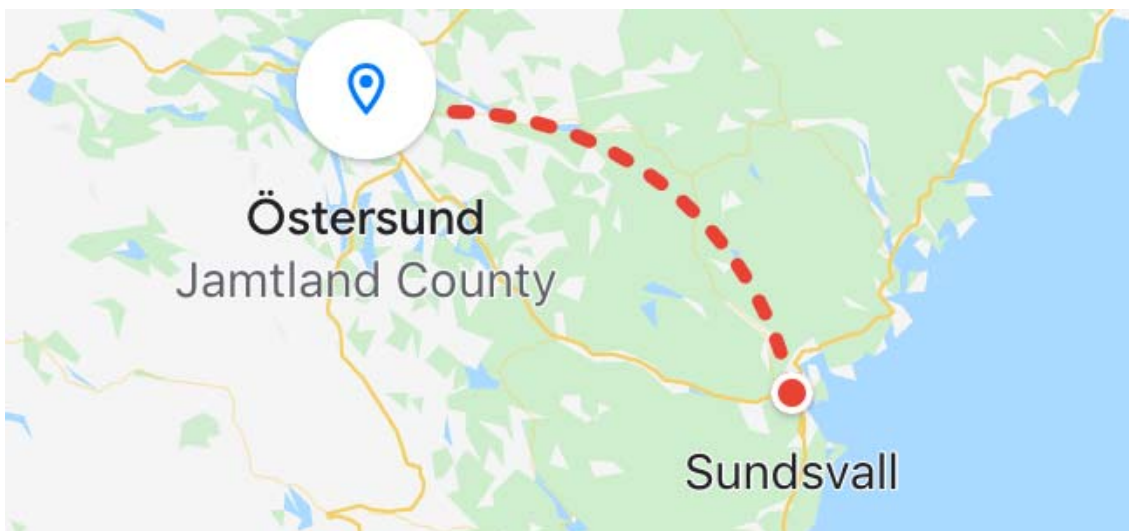
Swedish students pitch for InnoHEIs

In May there was a meeting for all partners planned in Sweden. Instead of this, we had a [second virtual partner meeting](#) with inspiring pitches from winning students of the Mid Sweden University! They had to come up with an answer to the following question in just one day. How would you design the future for North Middle Sweden, 2030? They had to fulfil one of the united nations 17 sustainable goals and include cooperation with two of the other European partners in the InnoHEIs project.



Risk and Crisis Research Centre adds to Swedish innovation

For the regional diagnosis Mid Sweden University interviews the leaders of the research and innovation infrastructure in the region of Middle Norrland. One of them is the Risk and Crisis Research Centre of the Mid Sweden University. This is one of the leading parties for the research and innovation infrastructure in the region Middle Norrland. The research centre of the university has an [important role for regional development](#).



Research & innovation infrastructure lessons for Mid Sweden stakeholders

The Swedish InnoHEIs team had two [stakeholder meetings](#) in the region Middle Norrland. During the meeting in Sundsvall the regional representative Malin Vedin informed about the smart specialization strategy that is under development for the region of VästerNorrland, which is one of the regions in Middle Norrland. Yvonne Söderström of the Swedish research institute Rise Processum introduced the audience to their project.



Our partner Tampere University of Applied Sciences was at the [International Triple Helix Conference](#) which took place online from the 15th to 17th of June to present InnoHEIs. This led to vivid discussions and good comments regarding our project!

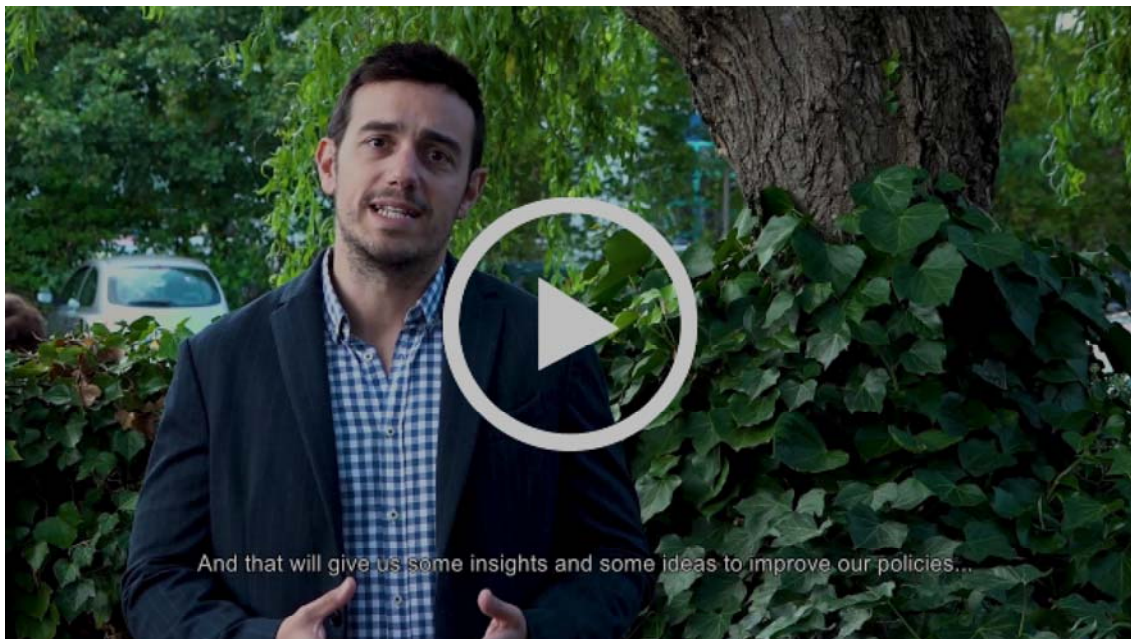


Stronger partnerships for innovation in Finland

In Tampere Region, several organisations such as higher education institutions, vocational schools, research centres and companies host a variety of research, demonstration and innovation infrastructures which can be utilised in collaborative endeavours. Strengthening of cooperation and partnerships among the regional ecosystem was discussed and reflected in the second [stakeholder group online workshop](#) of InnoHEIs. *Picture: Shutterstock [TAMK](#)*

Higher Education and Smart Specialisation workshop in Lithuania

On the 19th of February InnoHEIs was presented in the [workshop](#) about Higher Education and Smart Specialisation (HESS) in Vilnius.



Watch the InnoHEIs video!

During the kick off meeting in Groningen in the Netherlands the project partners shared what InnoHEIs will mean for their regions.



About the project

InnoHEIs: Improving Research and Innovation Infrastructure Performance - From Fragmented to Integrated and Sustainable Cooperation.

Eleven partners work together on enlarging the role of higher education institutions (HEIs) and their research and innovation infrastructure in European regions. How can HEIs act as key stakeholders for regional innovation development? [Visit our website](#) for more information and follow us on social media.

Let's speed up innovations!



Subscribe for the InnoHEIs newsletter

Copyright © 2020 InnoHEIs Interreg Europe, All rights reserved.

Want to change how you receive these emails?
You can [update your preferences](#) or [unsubscribe from this list](#).

