



LCA4Regions

Interreg Europe



European Union
European Regional
Development Fund

LCA and construction materials

Jakub Wojcik

Position Vicepresident

JW@izodom.PL

16 to 18 June 2020 □ 2nd Transnational Learning Journey in Navarre

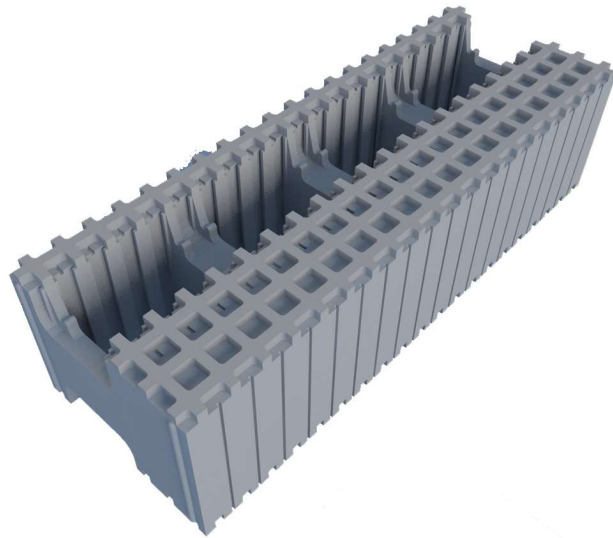




Who we are?
What we do?
Why we use LCA?
Lessons learned
Recomendations

Izodom – family owned SME, since 1990 creates house building technologies and manufacturers „bricks”. 19.000 reference buildings in 43 countries. UN „Caring for Climate” signatory.

Our product – a brick



„Completed/final product” - Built by a construction company ex in Spain



80% of emissions come from the life of „complete” product – a house. As per the LCA our product’s influence on environment and human health is the biggest during its lifecycle and demolition, not just during manufacturing, its still 56% lower, than in traditional houses.



Lessons learned:

- LCA shows, that products have biggest env. impact during lifespan,
- LCA is difficult to implement for some industries, [„complete product” „intendent use in normal conditions”],
- lack of quality data from manufacturers,
- LCA hesistant industry leaders,
- LCA promotes green innovations,
- local manufacturing promoted,
- emphasizes need of green manufacturing,
- promotes academia-industry cooperation,

Recomendations:

- LCA/LCC the best tool for product comparison,
- regional green procurment –lead by example,
- LCA promotes local and energy/resources efficient manufacturing,
- scientific programmes at local universities for caluculations of the LCA for local manufacturers,
- LCA can be utilised as protection agains non-EU suppliers



LCA4Regions

Interreg Europe



European Union
European Regional
Development Fund

Thank you!
Jakub Wojcik Izodom

Questions welcome

www.interregeurope.eu/LCA4Regions