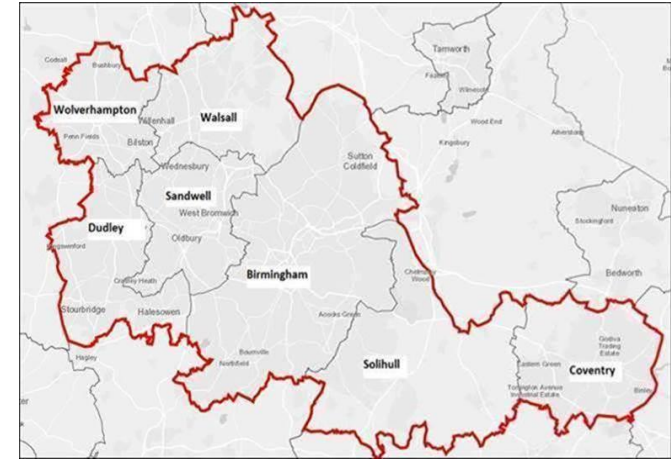


West Midlands 5G

Transforming the West Midlands

BETTER Project

17th June 2020



Agenda

- Introduction and aims of WM5G
- Connected Map synopsis and approach
- Connected Map live demo
- Next steps



WM5G – What's our remit?

DCMS 5G Testbed and trials

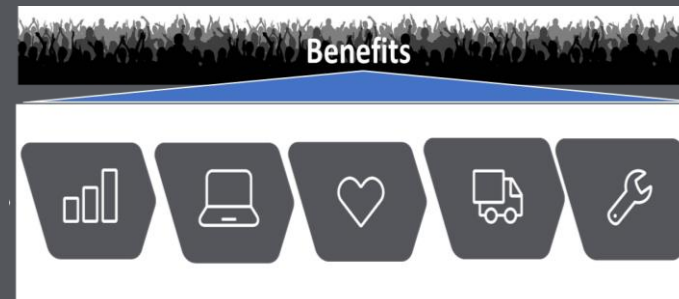
Urban Connected Communities project awarded
Sept 2018

WM5G formed March 2019

The testbed will be used to trial developing technologies designed for the delivery of both public and commercial services, with an end goal of supporting economic development by stimulating the 5G ecosystem.

It will also allow industry to test different deployment models for 5G infrastructure and help to inform the development of policy and regulation to support 5G deployment.

WM5G what we are doing



Test, prove and scale
new 5G services

Accelerate 5G & fibre
networks



Connected Map

Synopsis

The West Midlands is the first region to produce and test a Connected Map, driving a solution that will enable us to become #5GNetworkReady.

West Midlands 5G has mapped out the region's local authority assets that are suitable for mobile network digital infrastructure. Together with existing coverage plans from mobile network operators, WM5G has created a powerful tool to accelerate the deployment of 5G across the region and help close existing 4G coverage gaps.

WM5G's Connected Map also serves as an interactive tool to illustrate the true picture of digital infrastructure, enabling local authorities and mobile network operators to review their priorities and plan for the future – together.



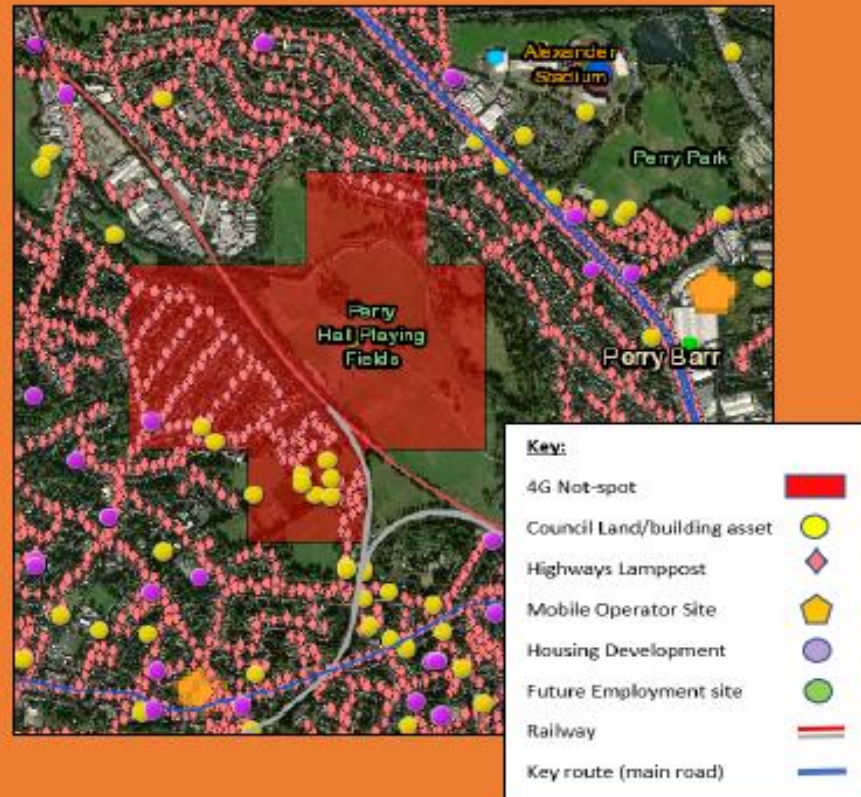
Connected Map

Connected Map in action

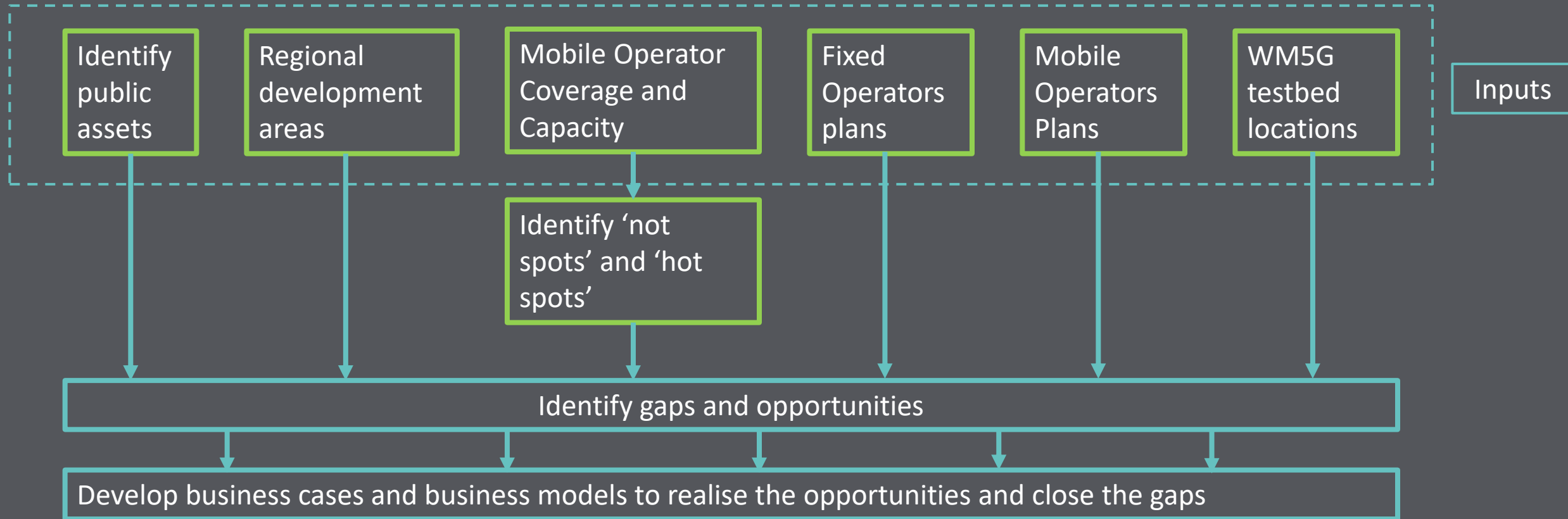
This example shows an area of poor 4G coverage (or not-spot) for an unnamed mobile network operator. With the Connected Map, we are able to see more than 100 houses, a future housing development and a mainline railway within the area. There is also a main road and Birmingham 2022 Commonwealth Games location just outside this area, where coverage may also be poor.

We now have a business case to improve coverage in this area. The Connected Map highlights over 20 public assets and hundreds of suitable small cell infrastructure locations to us – evidencing a problem but identifying a solution.

The Connected Map gives visibility of a wide range of assets that can be utilised for small cell development – which drives wider coverage and availability. These benefits align with WM5G's aim of getting the West Midlands #5GNetworkReady.



Mapping of public assets



Connected Map

Live demo



Connected Map

Questions?

