

Policy changes achieved by the action plan of the FNCOFOR

Territorial Energy Air Climate Plan (PCAET)

1. Writing of a national document

- On behalf of the French Agency for Ecological Transition
- Targeting local communities responsible for climate & energy strategies
- Methodological support for the integration of a forest & biomass strategy
- Listing of tools and good practices (promotion of local approaches for biomass harvesting and use, on the model of Eno Energy Co-operative-district)



2. Elaboration of communication supports

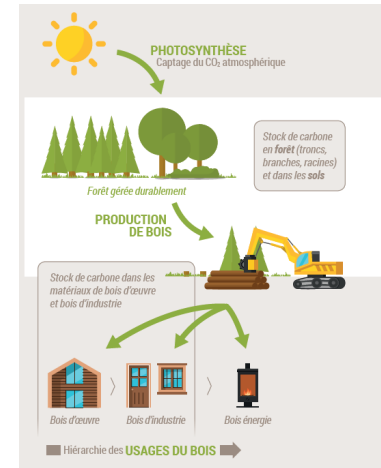
Popularization of scientific elements regarding wood biomass use for energy production and construction.

- Focus on 3 main levers for climate change mitigation : carbon sequestration, carbon storage & carbon substitution
- Available for local associations of the FNCOFOR : to be distributed during training sessions or events



POUR
LE CLIMAT

AVEZ-VOUS
PENSÉ
À LA FORÊT
ET AU BOIS ?



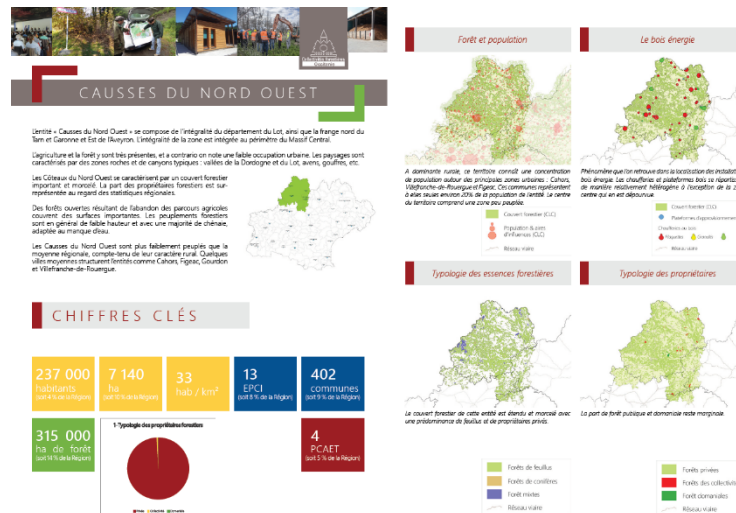
3. Training courses

Project managers working along the FNCOFOR where trained in order to adapt their support to local communities and promote wood & biomass issues inside PCAET strategies,

4. Local technical support

We the use of document and training courses from the FNCOFOR, local association had tools to support the inclusion of operational action regarding biomass use

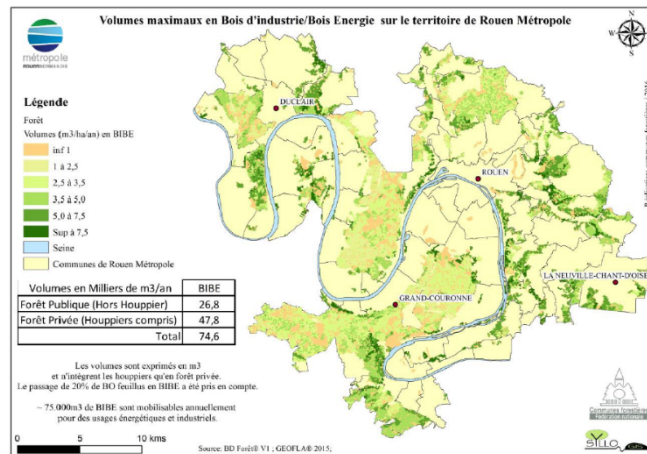
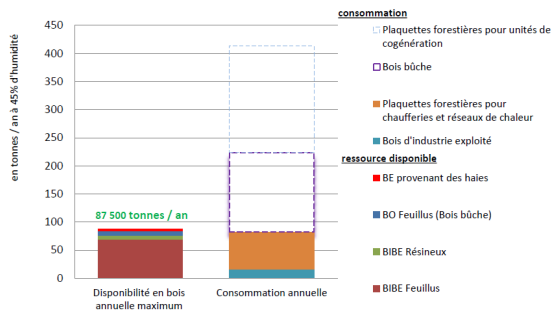
- Promotion of integrated forest strategies at local level
- Focus on the development of small sawmills in addition with smaller heating network (development of cascading use of wood)



Good practice : the territorial supply plan

Evaluation of forest resources in a 20 years future (by following sustainable management practices), in comparison with actual consumption of heating system in use by the municipalities

Comparaison Consommation / Ressource forestière





Aldo: a tool from the Agency for ecological transition

Estimate local carbon storage in forest soil and forest biomass, as well as carbon storage in wood material

Planned changes for this carbon storage, related to evolution of forest practices and the destination of wood products

Surfaces	Niveau 1		Niveau 2		Niveau 1 cc		Niveau 2 cc		Niveau 1 (for stocks)		Niveau 2 (for stocks)	
	Niveau 2 (nomenclature "sois")	Niveau 2 (nomenclature "biomasse")	ha	%	ha	%	ha	%	ha	%	ha	%
occupation du sol	cultures	cultures	28,91	28,98	2077	2077						
	prairies	prairies zones herbacées	11,16	11,21	1084	1084						
		prairies zones arborées		0,00		0						
	forêts	feuillus	12,28	12,33	1077	1077						
		mixtes	8,92	8,98	1077	1077						
	forêts	conifères	25,79	25,79	6555	6555						
		propres/taillis	9,26	9,29	56	56						
	zones humides	zones humides	3,32	3,33	104	104						
		vergers	5,43	5,43	145	145						
	vignes	vignes	3,23	3,23	1077	1077						
		sois artificiels (imperméabilisés)*		8,25	8,25	2194	2194					
	sois artificiels arborés et boisement**	sois artificiels arborés et boisement**	1,84	1,84	107	107						
sois artificiels arborés et boisement**		0,12	0,12	54	54							
Haies associées aux espaces agricoles				1	1							
total			395	395	10112	10112			0	0		

Attributs	Sol (acorn)		Litière		Biomasse		Tous réservoirs		Tous réservoirs		Sol + litière		Biomasse	
	CC	IC	CC	IC	CC	IC	%	%	%	%	%	%	%	%
occupation du sol	cultures	450 159					450 159	13	13					
	prairies	prairies zones herbacées	118 211				118 211	9	9					
		prairies zones arborées			89		89	1	1					
forêts	feuillus	372 919	38 124	372 919	719 074	719 074	54	54	25	25				
	mixtes	331 188	10 086	331 188	351 274	351 274	26	26	20	20				
zones humides	zones humides	32 000	27	3 260	8 660	8 660	6	6	11	11				
	vergers	20 318			3 260	3 260	2	2	11	11				
vignes	vignes	48 000			7 398	7 398	5	5	11	11				
	sois artificiels imperméabilisés	61 510			1 510	1 510	1	1	5	5				
sois artificiels arborés et boisement**	sois artificiels arborés et boisement**	37 150			3 219	3 219	2	2	21	21				
	sois artificiels arborés et boisement**	4 179			3 174	3 174	2	2	6	6				
Haies associées aux espaces agricoles				30	30	30	0	0	0	0				
Haies occupées		1 113 791	100 500	1 214 291	1 214 291	1 214 291	93	93	58	58				
% tous réservoirs (PS inclus)			2075	376										

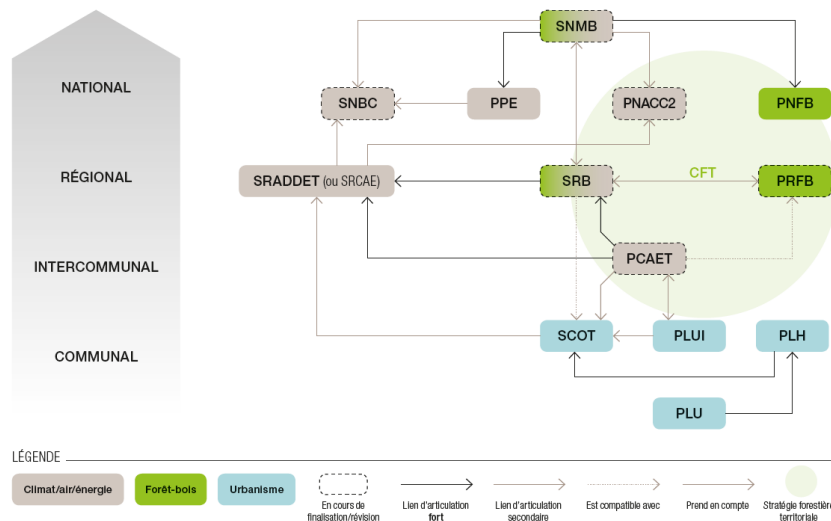
Stock total (tC)	1 513 880
Stock total (tCO_{2e})	13 612 827

National, regional & local policies impacting forest & wood

Need for a local integrated strategy : the importance of territorial forest charters

New climate policies focused on carbon issues : be careful not to derive from multifunctionality-based management of forests

LA PLACE DU PCAET DANS LES PLANS ET PROGRAMMES IMPACTANT LA FILIÈRE FORÊT-BOIS



Sources : ADEME, Icare, CEREMA/Réalisation : FNCCOFCR, 2019

BIO4ECO
Interreg Europe



Thank you for your attention