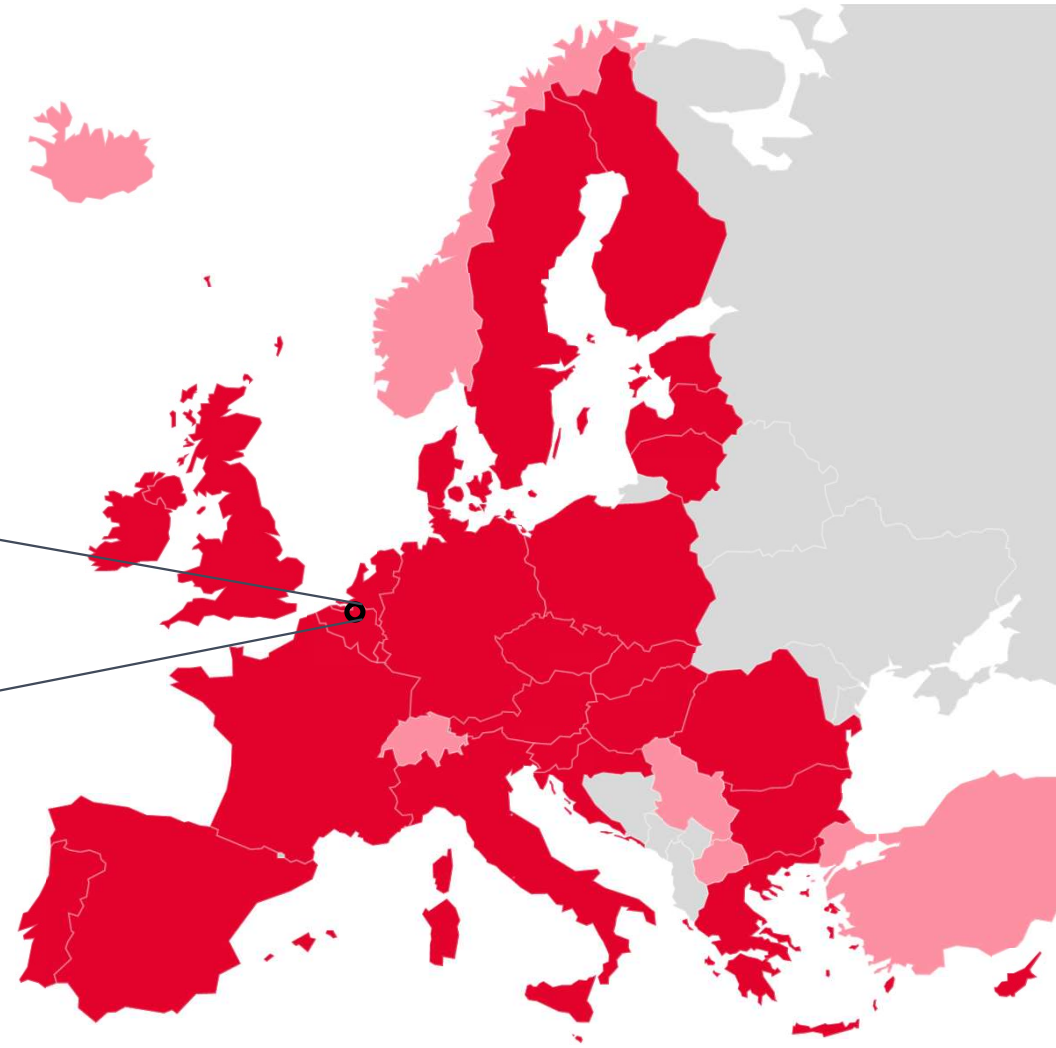


Border Inspection Post Port of Antwerp

Kristin van Kesteren-Stefan
Customs & Foodchain Policy Advisor



Port of Antwerp



■ EU customs union

■ EFTA Countries (IS, NO, FL, CH) + Common transit procedure (TR, SRB, MK)

Port of Antwerp DNA

Belgium's biggest economic driver



238

Million tonnes of
maritime freight



12,068

hectares



20.7

billion €
added value



144,000

jobs



1,000

companies



4.8%

GDP

Port of Antwerp DNA

Unique synergy



Cargo handling



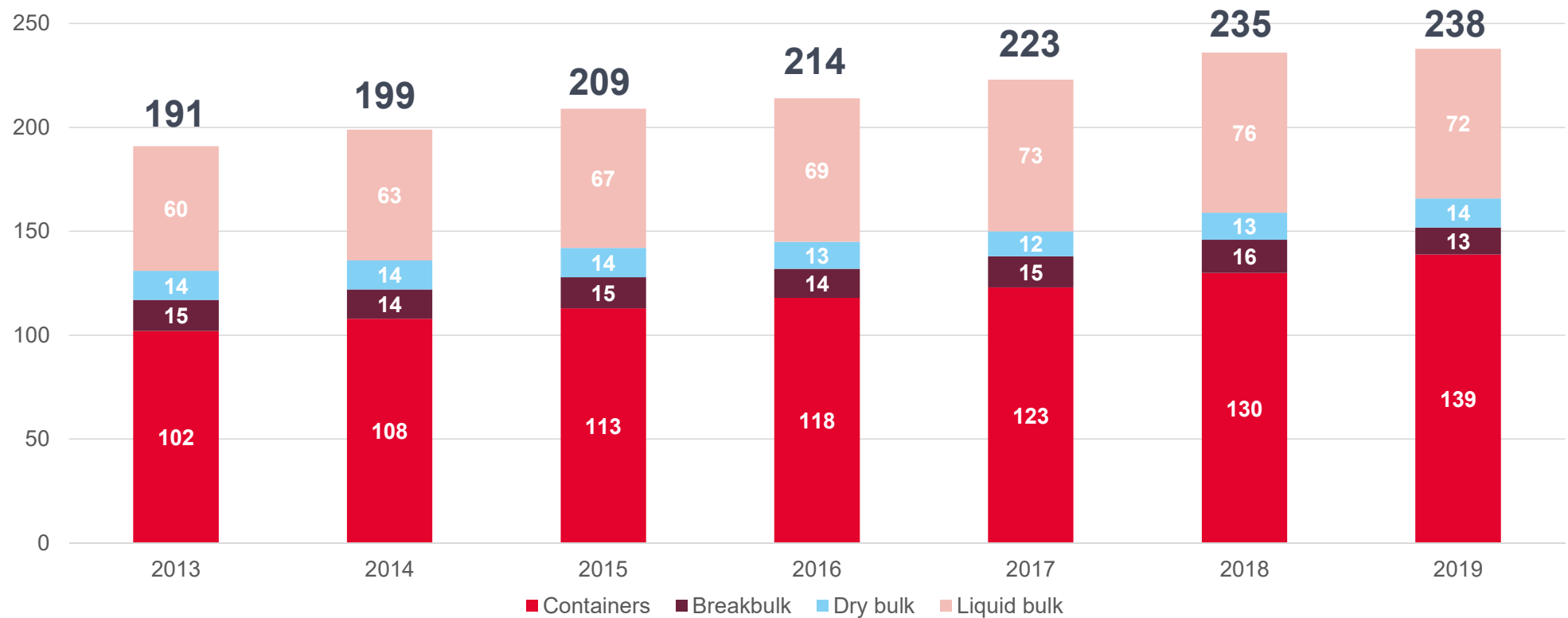
Logistics



Industry

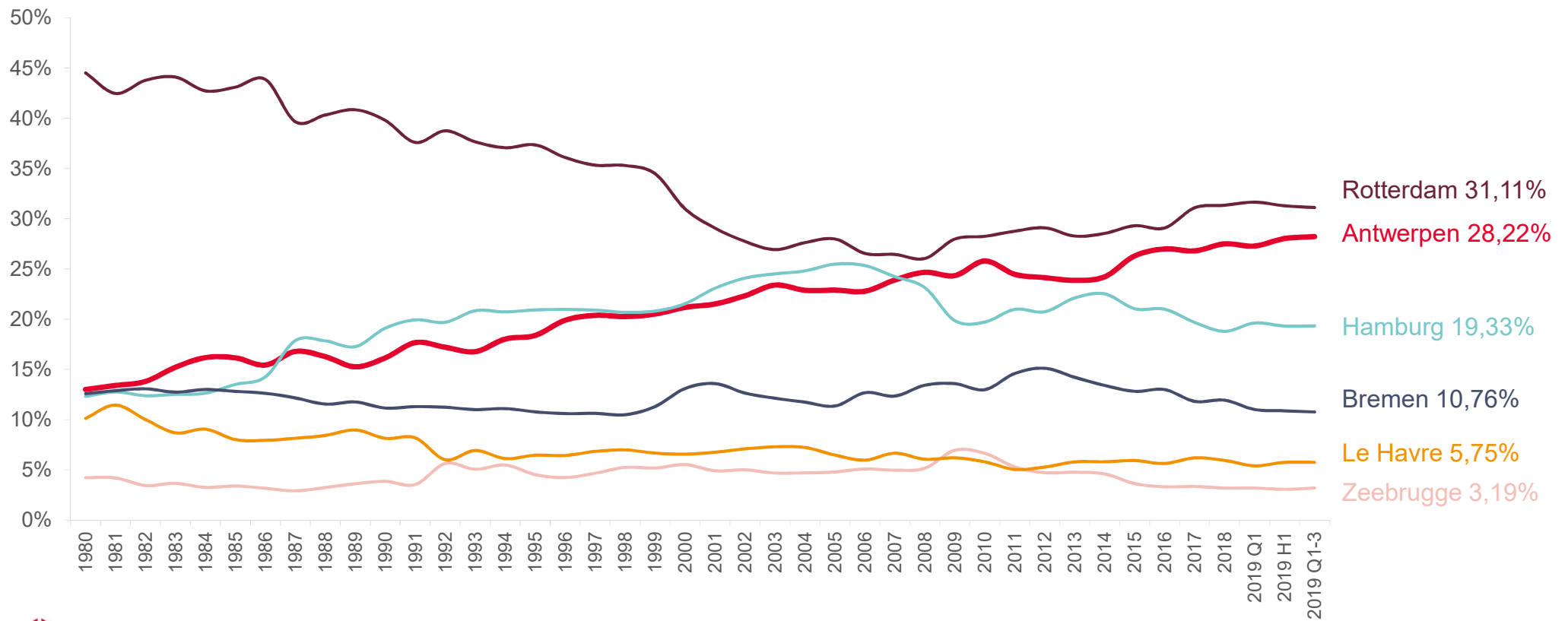
Sustainable growth

7th record in a row: 238 million tonnes of cargo in 2019



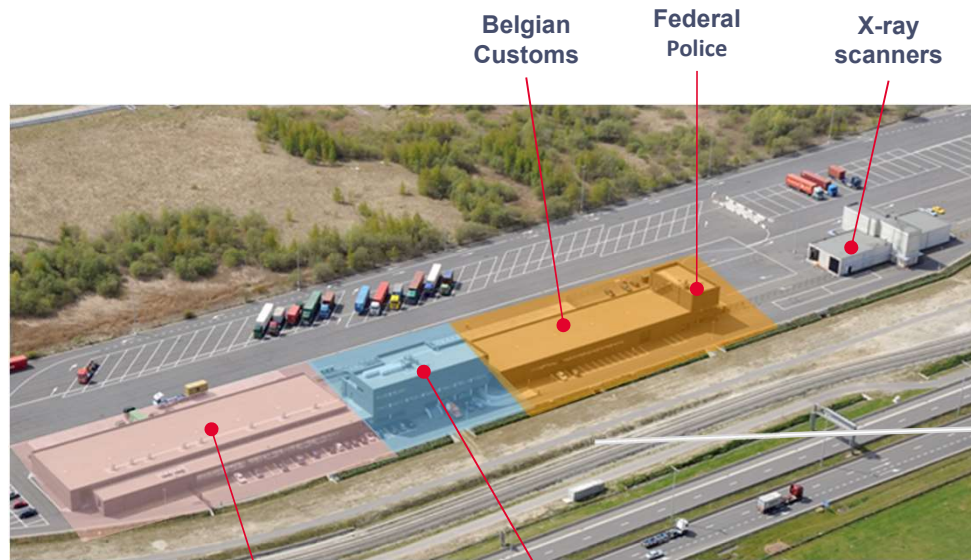
Sustainable growth

Antwerp gains European container market share year after year



Aandeel in ton

Border inspection posts: one stop shop



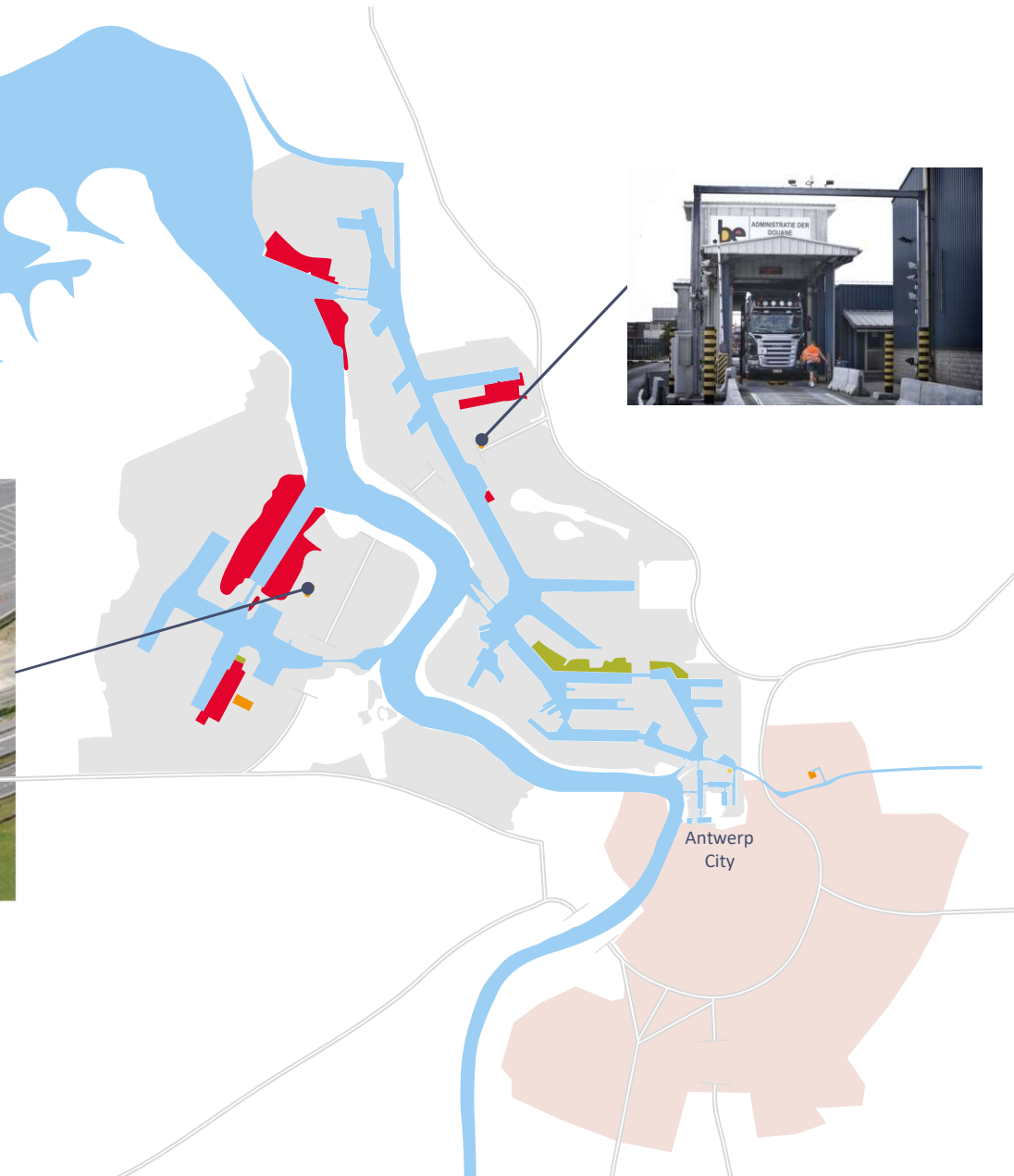
Belgian
Customs

Federal
Police

X-ray
scanners

Federal Agency
for the Safety
of the Food
Chain (FASFC)

Administrative
building:
• Customs
• FASFC
• Federal Agency
for Nuclear
Control



Antwerp
City

BIP LO Port of Antwerp – key facts

- Strategic decision to combine customs & food safety controls on one site close to main container handling → opening Deurganck dock (MPET, DP World)
- Operational since 2009
- Antwerp Port Authority (APA) is concession holder & build all infrastructure (except X-ray scanners)
- Belgian Customs, FASFC, Federal Police are hiring → maintenance of the building & area is duty of APA
- APA holds authorisation for Border Control Post for sanitary and veterinary controls (phytosanitary, sanitary, packed, unpacked, temp. controlled but no carcasses)
- Opening hours: weekdays: customs 6am – 10pm & FAFSC 7am – 6pm
- Economic operators need no appointment for controls → first come first serve principle
- Total surface is 54'260 m²

BIP LO Port of Antwerp – infrastructure

Customs

- 2 fixed x-ray scanners, mobile scanners, backscatter
- Megaports
- 10 unloading docks
- Forklift, lashing & securing material

FAFSC

- 14 unloading docks divided over 4 separated compartments: phytosanitary, foodstuff, animal products non-human consumption, animal products human consumption
- Laboratories and necessary material, temperature controlled storage (frozen, chilled), dedicated waste facilities
- forklifts, lashing & securing material

BIP LO Port of Antwerp – infrastructure

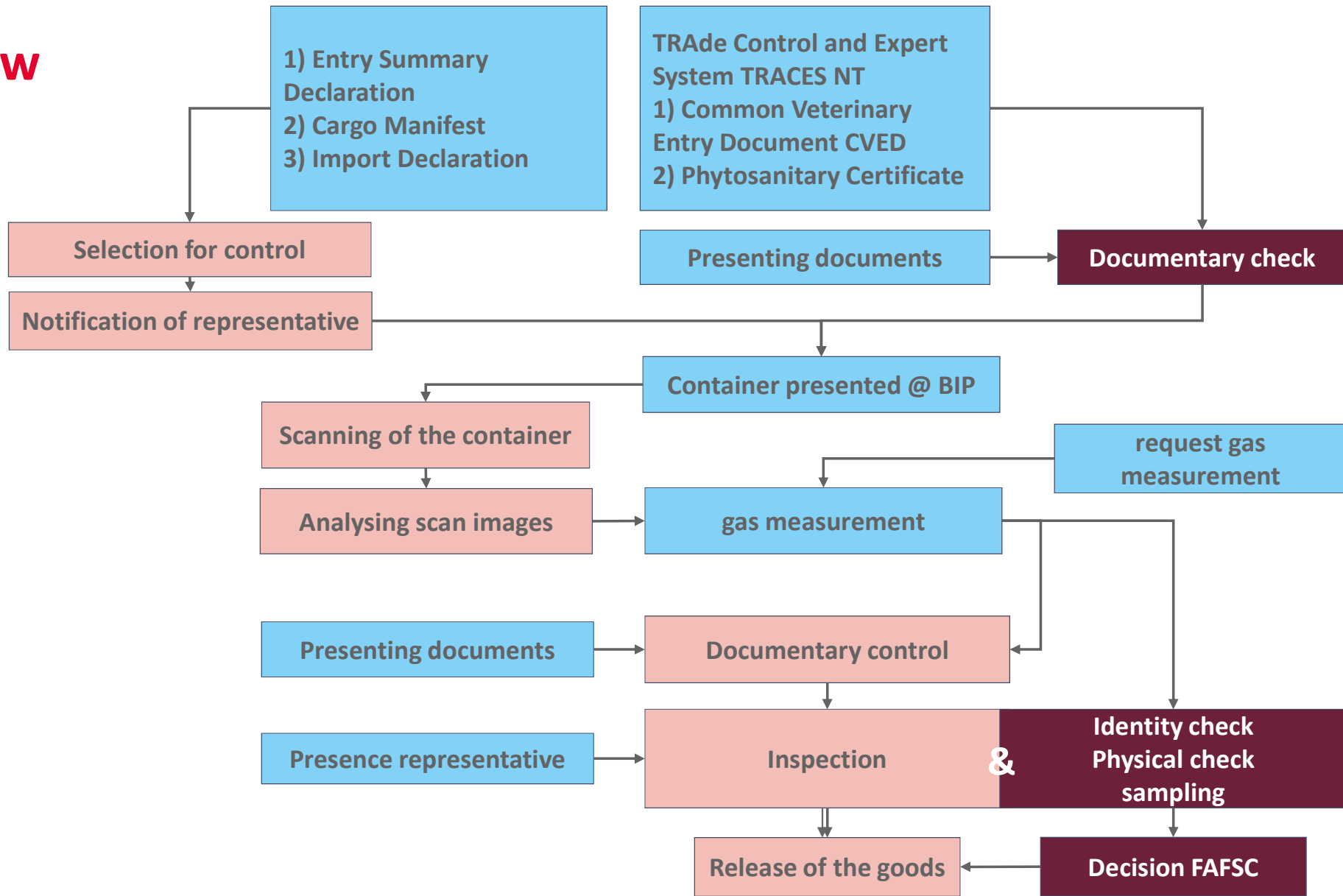
General

- Container yard with plug-in's for reefer container and container forklift for arrested/stopped container
- Sanitary facilities for visitors (truck drivers, customs agents), vending machine
- Truck parking (waiting area), car parking
- Truck scale (not operational at this point)
- Service providers for gas measurement
- Service providers locally supporting customs agents/freight forwarders

BIP LO Port of Antwerp – virtual tour

<https://www.google.com/maps/@51.2892595,4.2640532,5671m/data=!3m1!1e3>

Proces Flow Controls

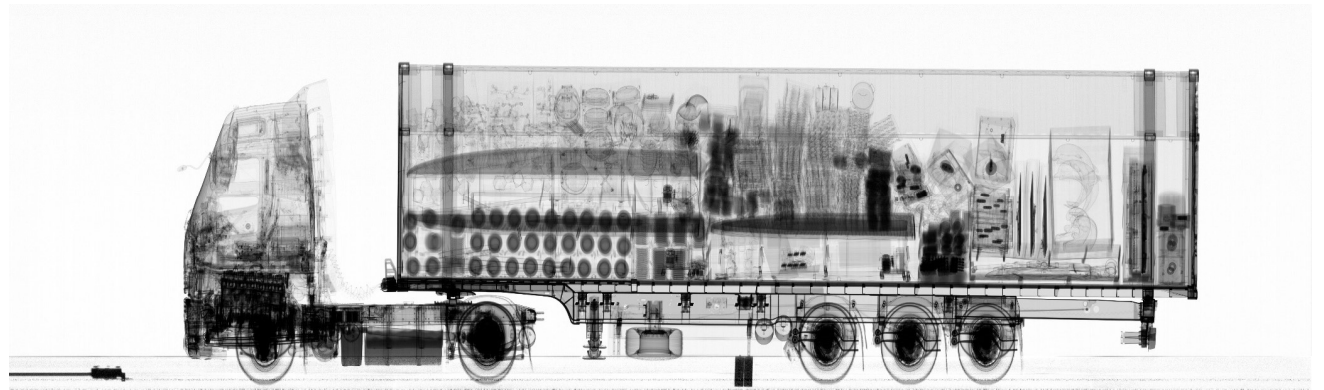
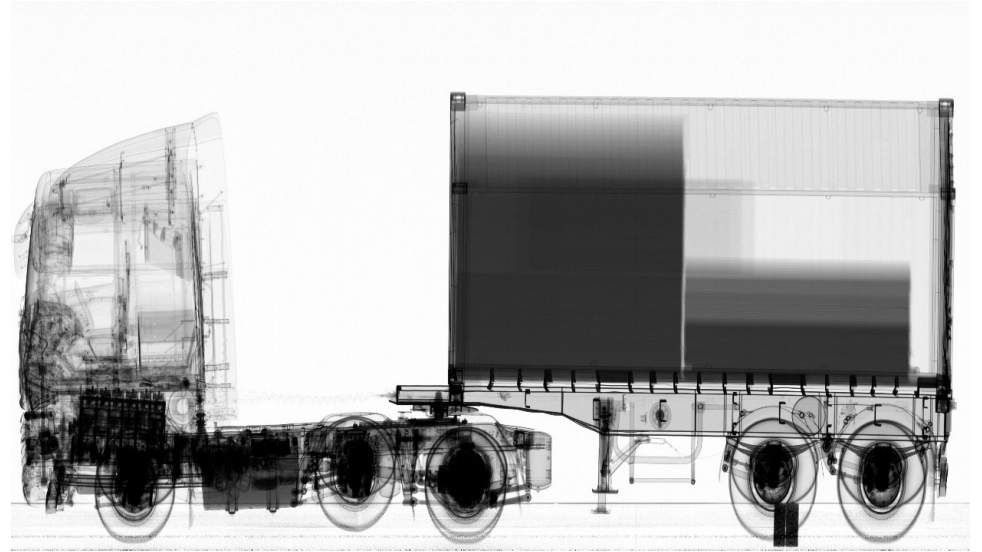


FAFSC

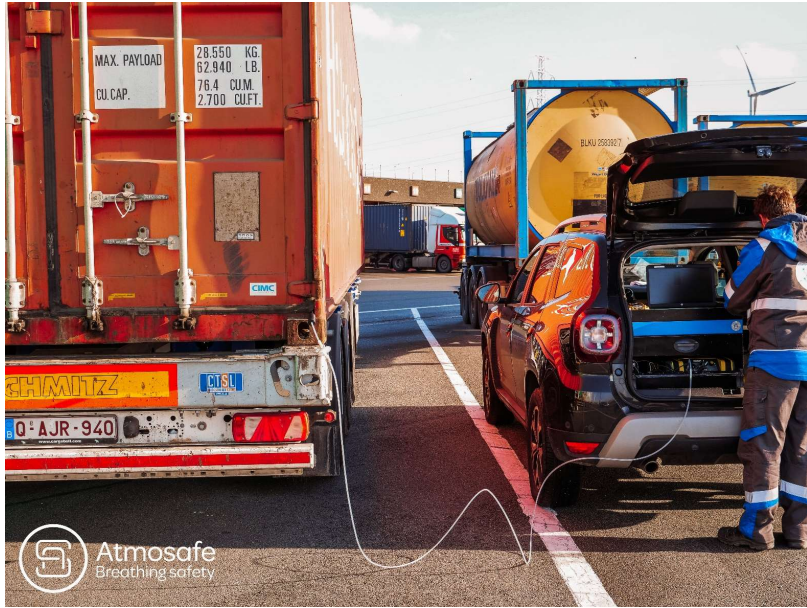
customs

Economic operator

Analysing scan images



gas measurement



Inspection

&

Identity check
Physical check
sampling

Customs Inspection

Depending on risk analysis, Customs controls:

- Seals
- Item number
- Origin
- Physical product against HS-code
- Counterfeit, drugs, product safety, undervaluation, dual use, ...



Inspection

&

Identity check
Physical check
sampling

Identity check by FAFSC

- Check container- and sealnumber
- Marks on cartons vs. on certificate
- Weight
- Colli



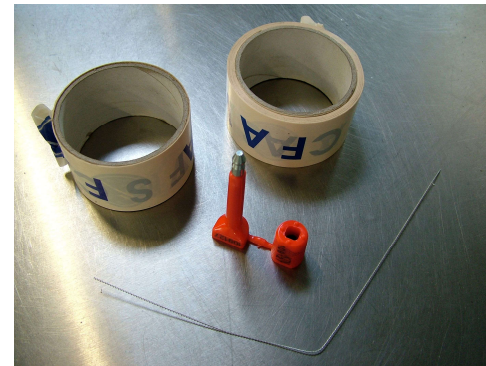
Inspection

&

Identity check
Physical check
sampling

End of controls FAFSC & customs

- Open cartons, boxes etc. are closed with official tape
- Reload of goods by dock workers
- Dock workers close container with new seal



Thank you



**Port of
Antwerp**

Kristin.vanKesterenStefan@portofantwerp.com