



Vlaamse
overheid

Open- Space- Movement

Griet Celen
14th May 2020



there is **A**
movement in
our open
space
(you just don't know it yet)

State **1** of the art

Flemish **2** Land Agency

Open Space **3** Platform

Program approach **4** illustrated

Open Space **5** Movement!

State **1** of the art?

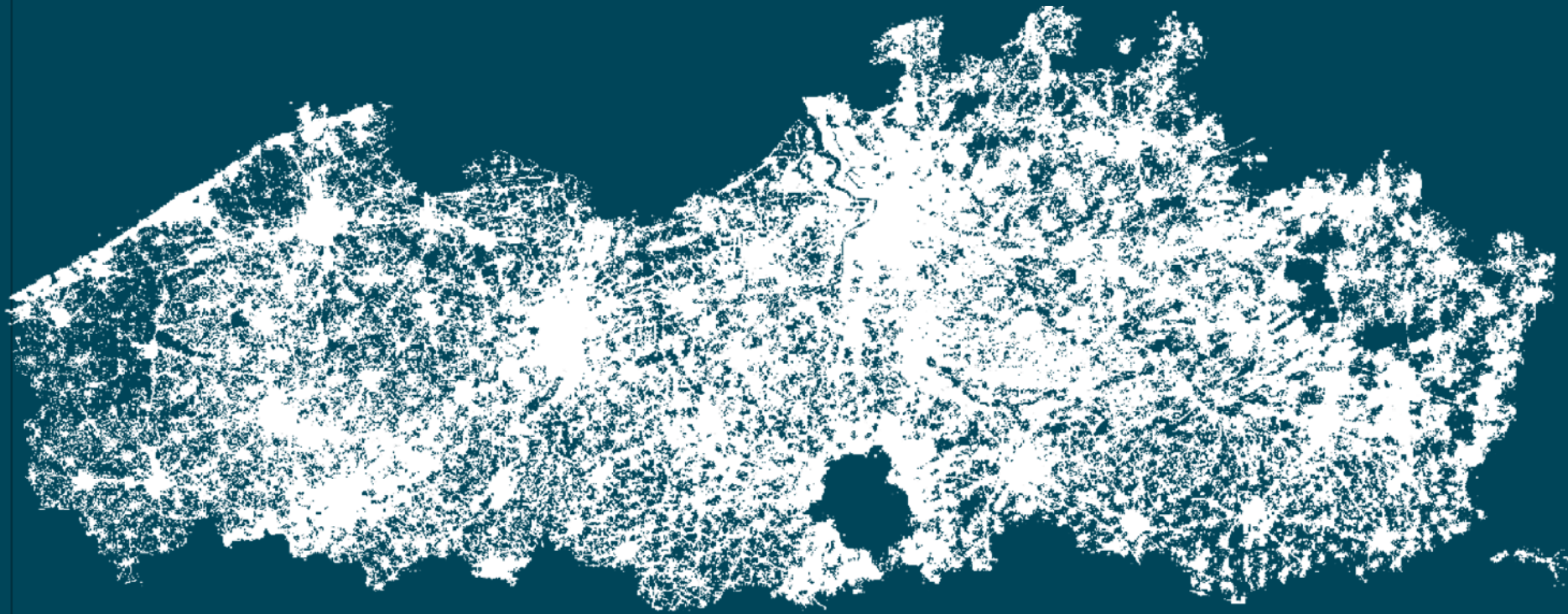
Flemish **2** Land Agency

Open Space **3** Platform

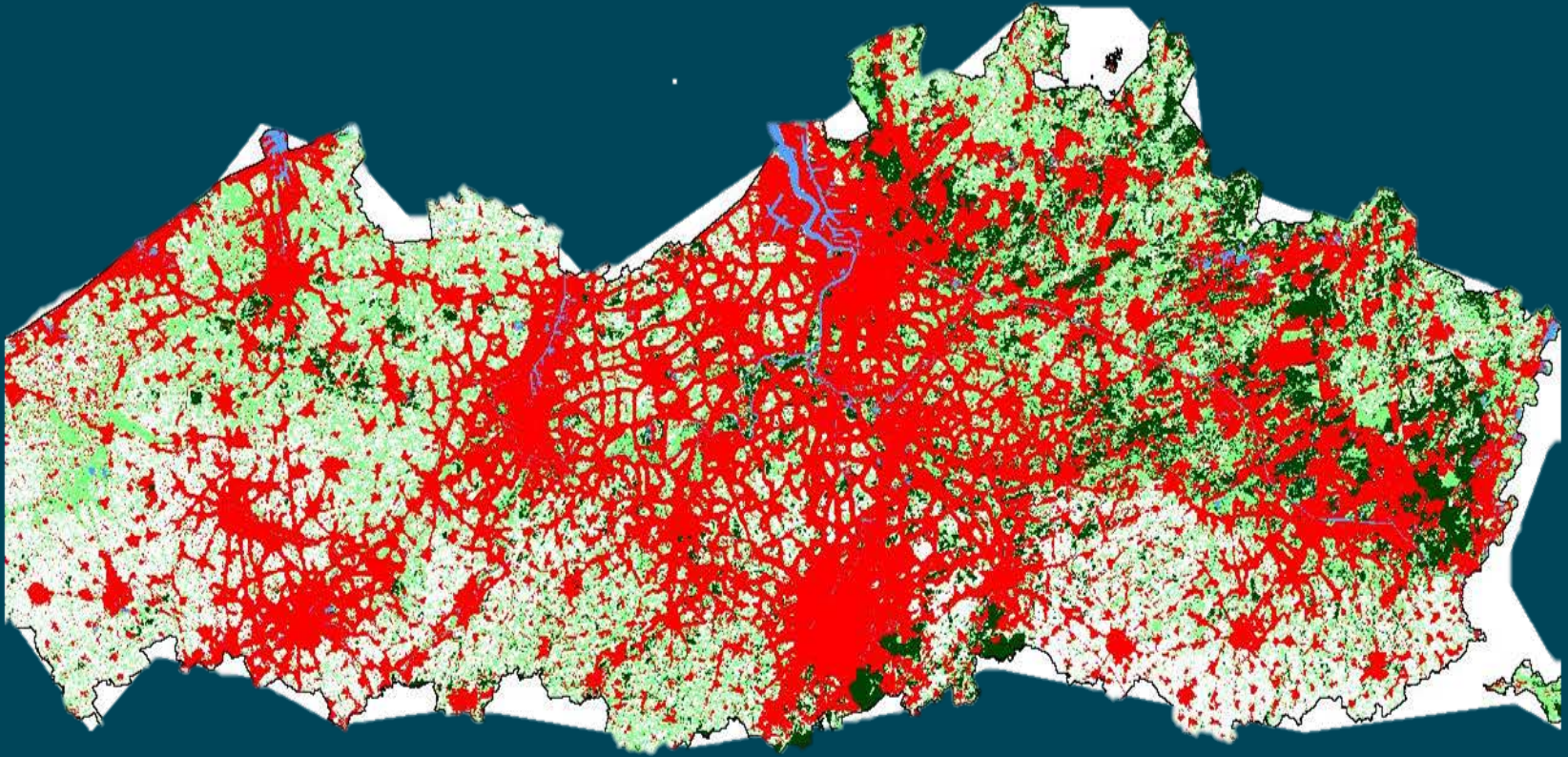
Program approach **4** illustrated

Open Space **5** Movement!

1/3th built-on area
16% covered



BUA : $\pm 20\%$ covered in 2050



'Modelling urban expansion and its hydrological impacts', PhD, 2010, KU Leuven - Poelmans, L.

drought

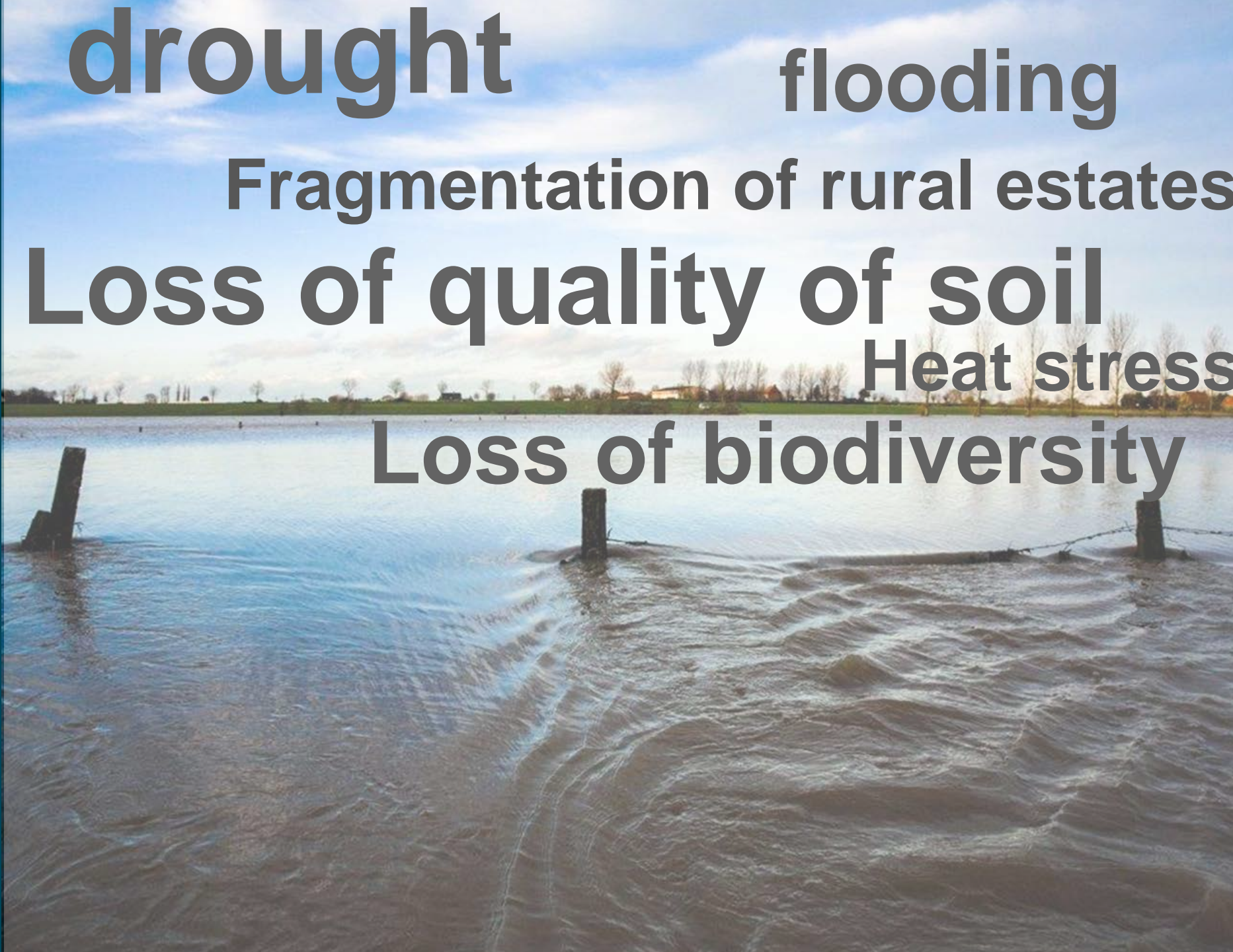
flooding

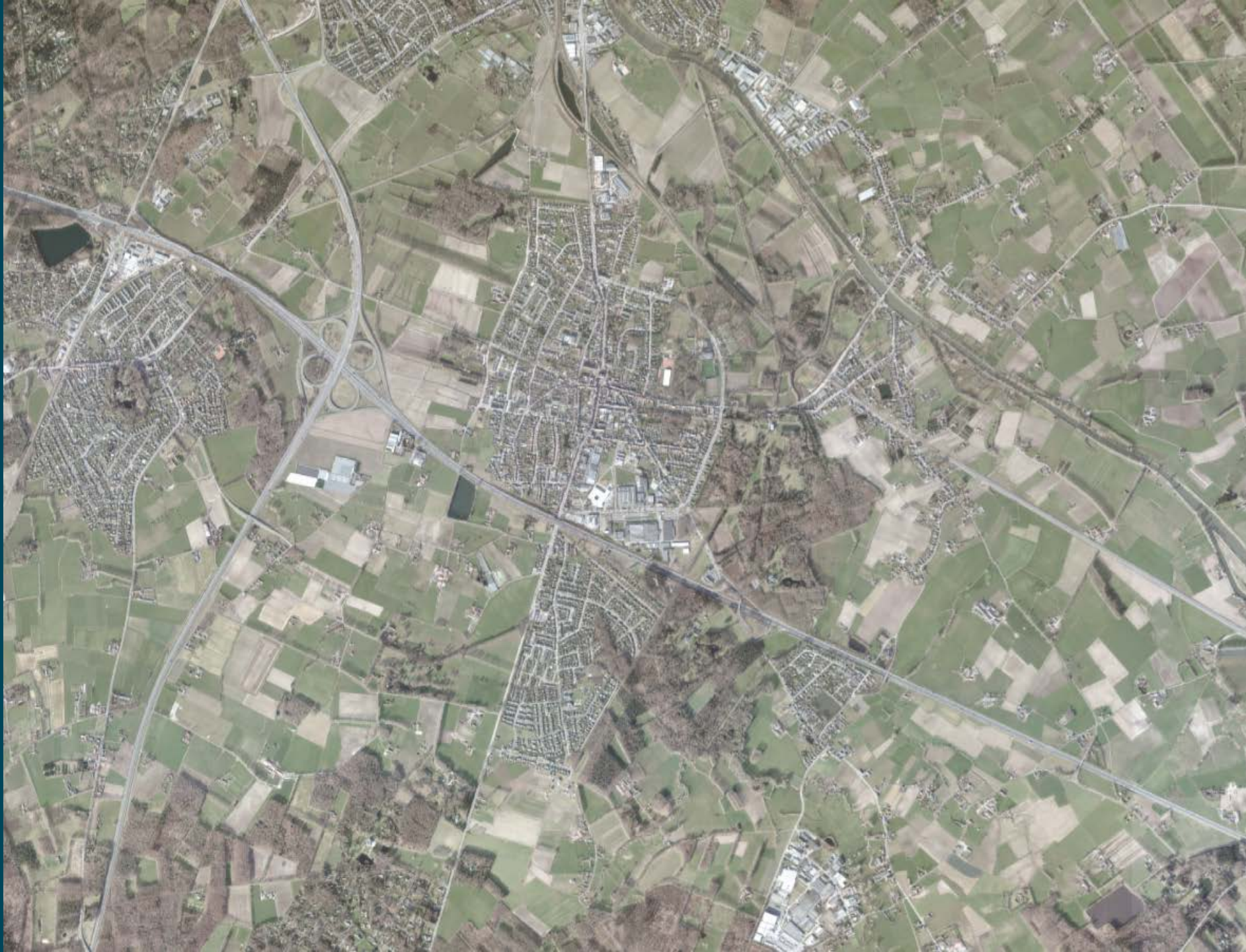
Fragmentation of rural estates

Loss of quality of soil

Heat stress

Loss of biodiversity





State **1** of the art?

Flemish **2** Land Agency

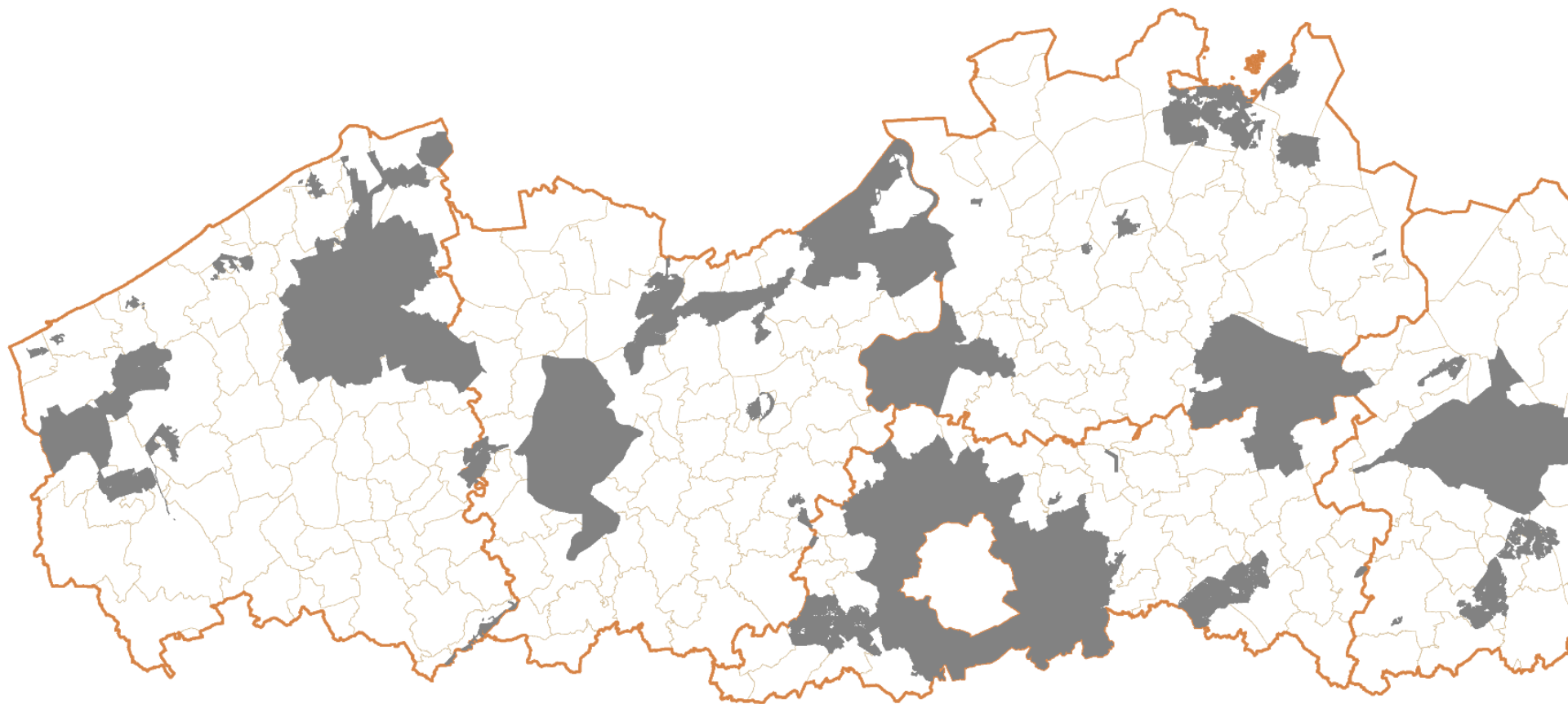
Open Space **3** Platform

First **4** test

Open Space **5** Movement!

a government Agency with a beautiful mission statement

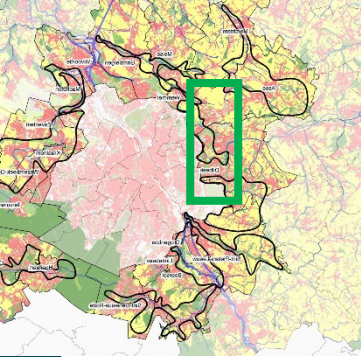
- ▶ We believe that a resilient open space is the answer to challenges such as urbanisation and climate change.
- ▶ We will strengthen the open space
 - by collaborating on policy
 - by investing in soil and water quality, biodiversity and infrastructure
- ▶ We do so with expertise and passion, together with our partners.
- ▶ For a beautiful landscape and a healthy environment



alle actieve inrichtingsprojecten

provinciegrenzen

integrated projects of land development



from regional vision to development plan

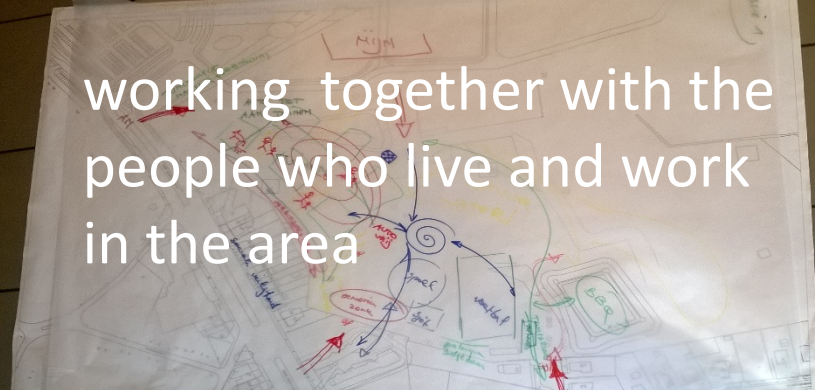


in a multidisciplinary team





working together with the people who live and work in the area



and a box of tools for implementation

DEVELOPMENT

Development **works**

Development **works**
by virtue of the **law**

Compensation
for loss of value
of land

Establishment of
easements for a
public use

COMPLEMENTARY TOOLS

Local **land banks**
(including compen-
sations)

**Voluntary business
relocation, business
conversion and
business closure**

Obligation to buy

MANAGEMENT

Management agreements

Compensation for **services**

ACQUISITION AND LAND MOBILITY

Acquisition

Project-based **right
of pre-emption**

**Voluntary
reparcelling**

Reparcelling by
virtue of the **law**

Exchange of use

Reparcelling by
virtue of the **law with
planning exchange**



Vlaanderen
is open ruimte



land development plan Wildenburg-Aanwijs

Rural estate Wildenburg

Parkbeheerplan

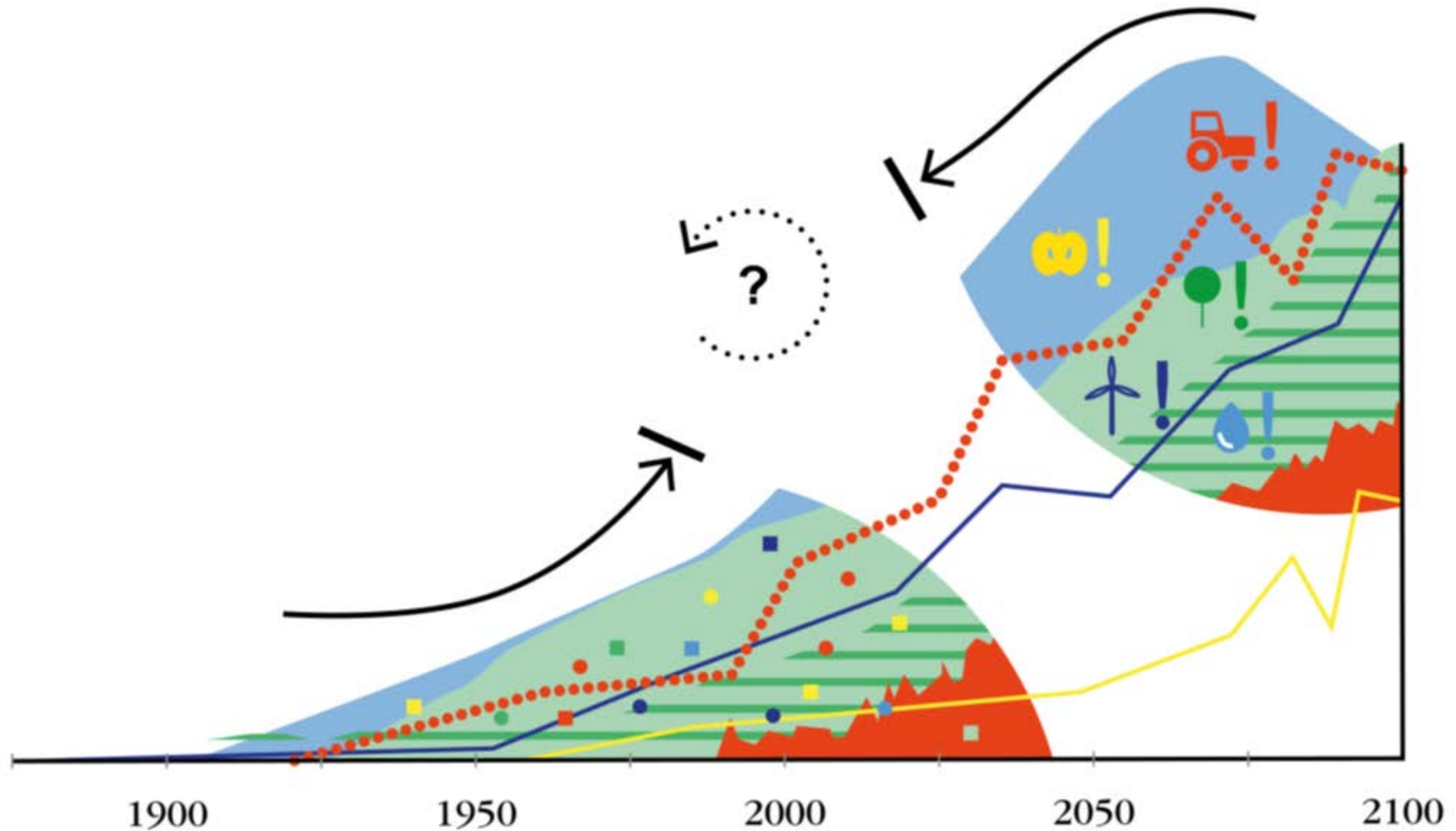
Watergebonden maatregelen

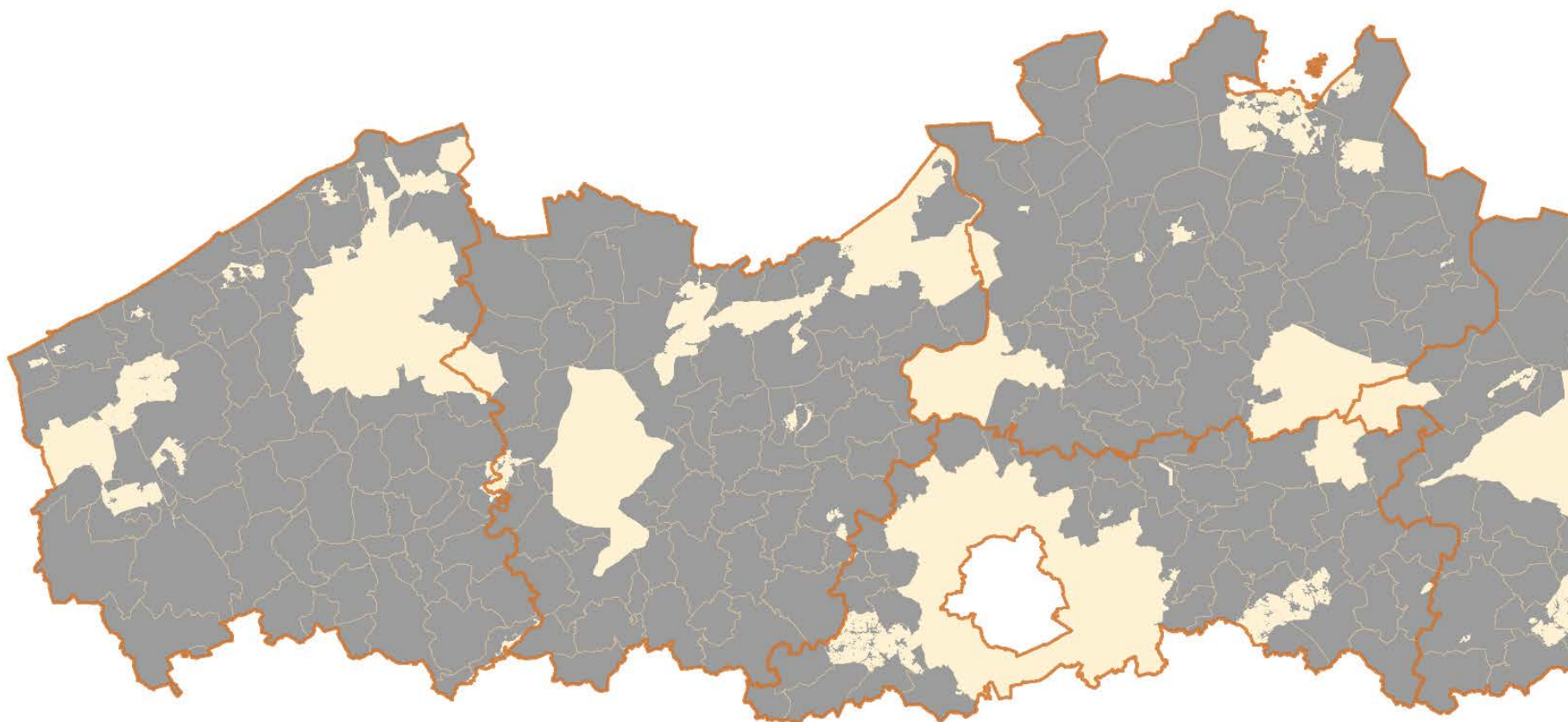
Restauratie ijskelder: 2020



But.....

there is still a gap between goals and results on the ground!





- alle actieve inrichtingsprojecten
- provinciegrenzen

State **1** of the art?

Flemish **2** Land Agency

Open Space **3** Platform

First **4** test

Open Space **5** Movement!

2013

2014

2015

2016

2017

2018

2019

2020

Het
open
ruimte
offen-
sief

“offense is the best defense”



Food Landscape



Landscape Building



Ambitious Landscapes



Peri-urban Building



Smarter Agro



**Open space
infrastructure**

There is something....
between policy and integrated projects

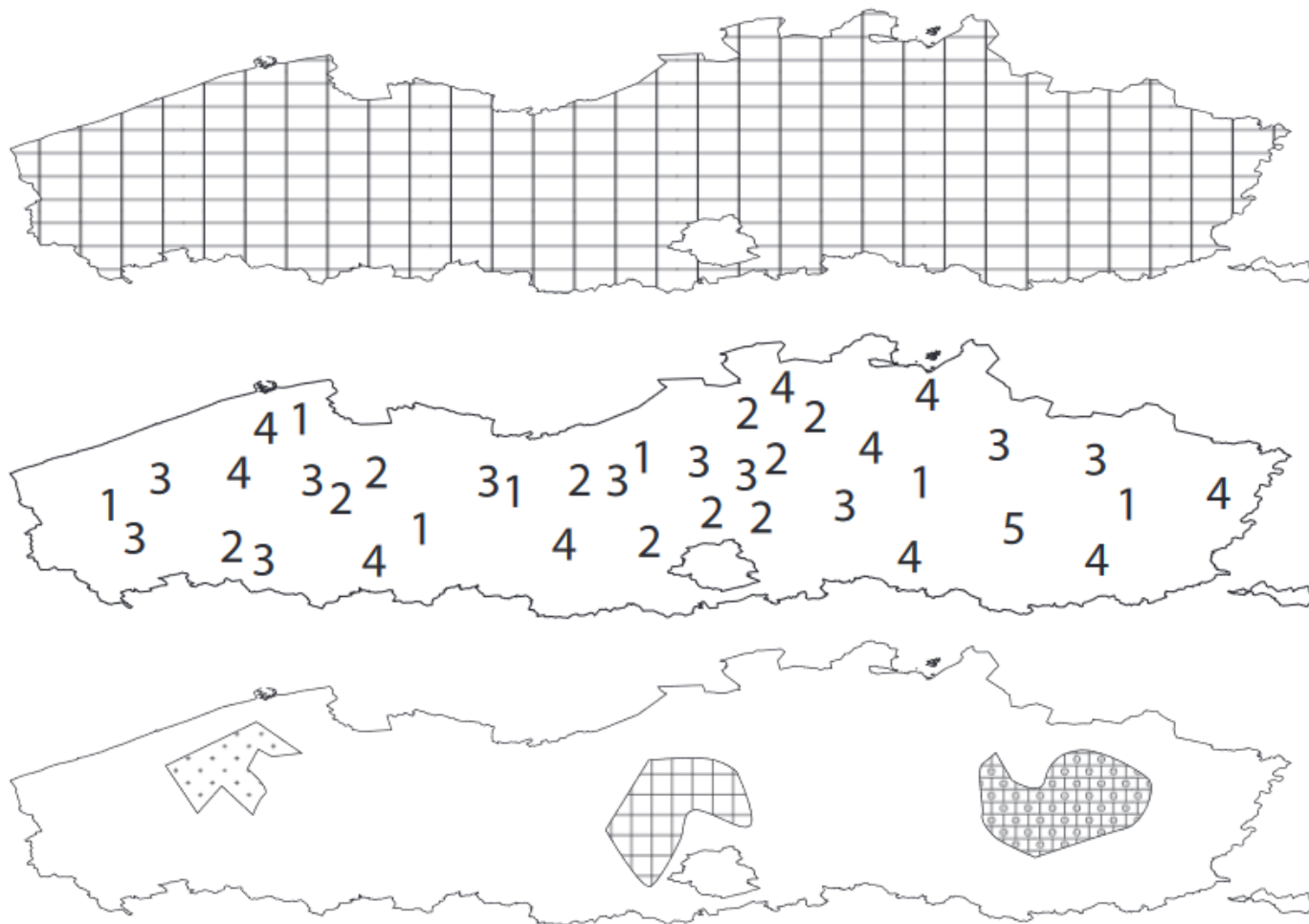
policy

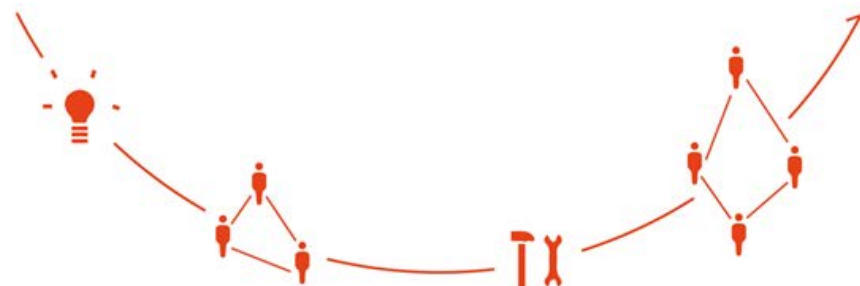
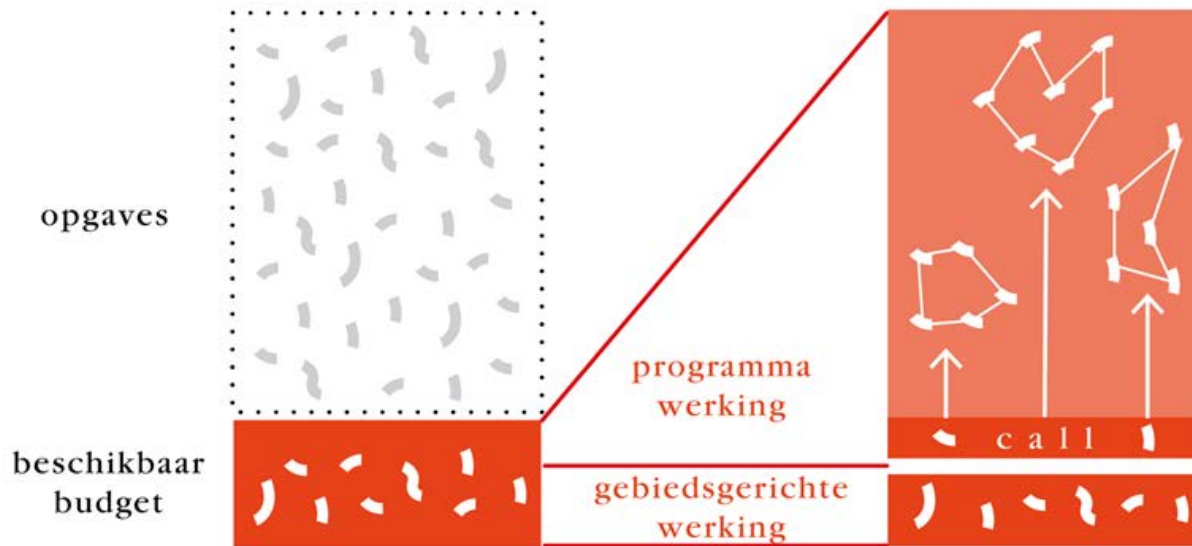
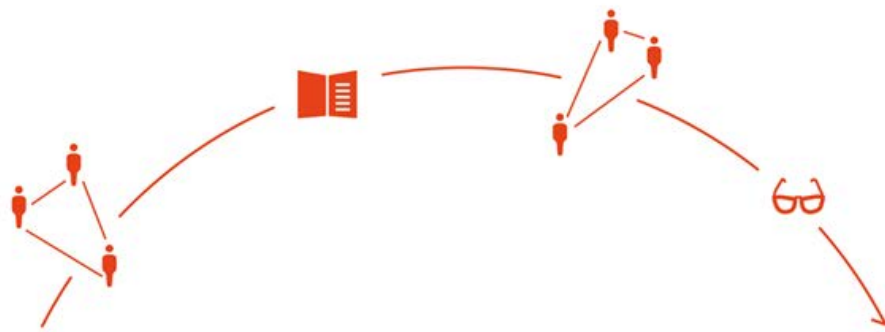


Integrated
projects



recurring
challenges





State **1** of the art?

Flemish **2** Land Agency

Open Space **3** Platform

Program approach **4** tested

Open Space **5** Movement!

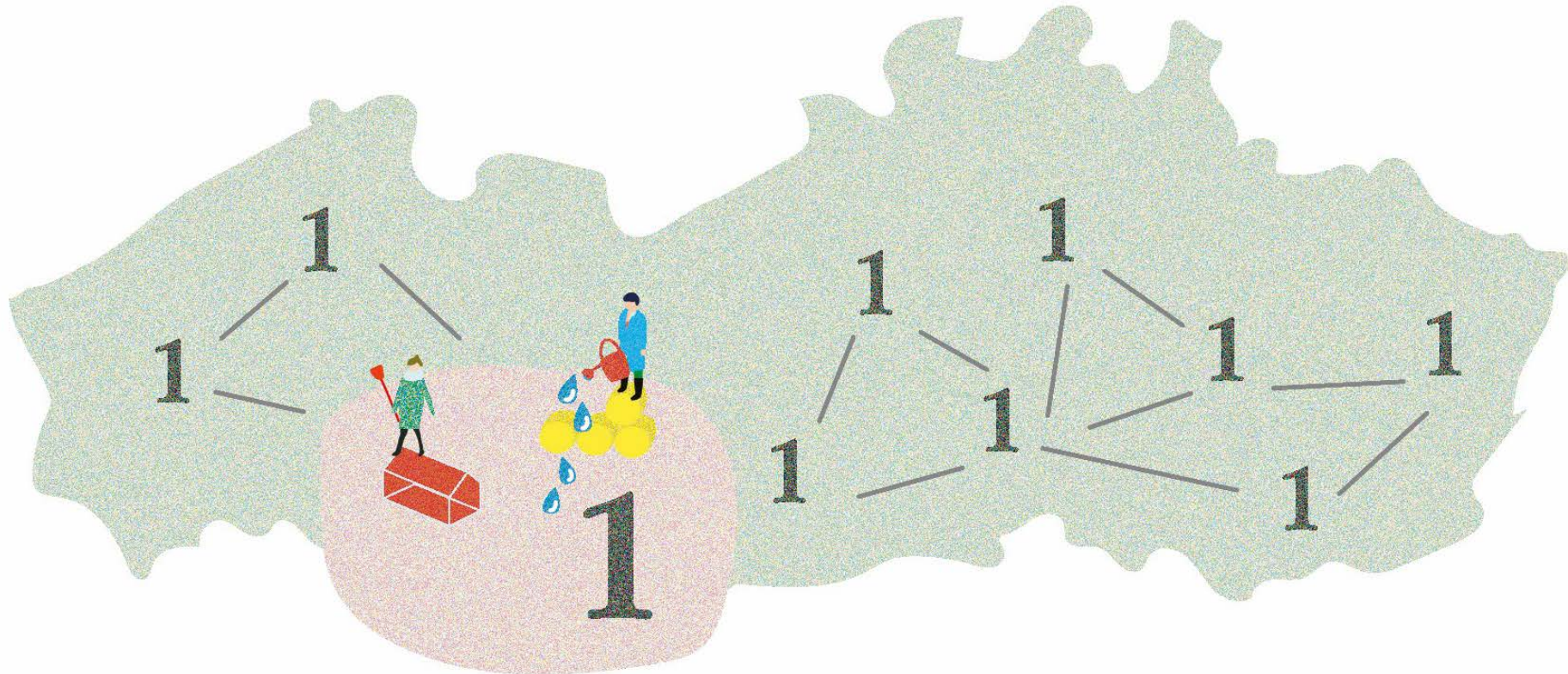
Recent floods and droughts show the urgency for a program water-land-scape



So, we brought together a flemish team for the program



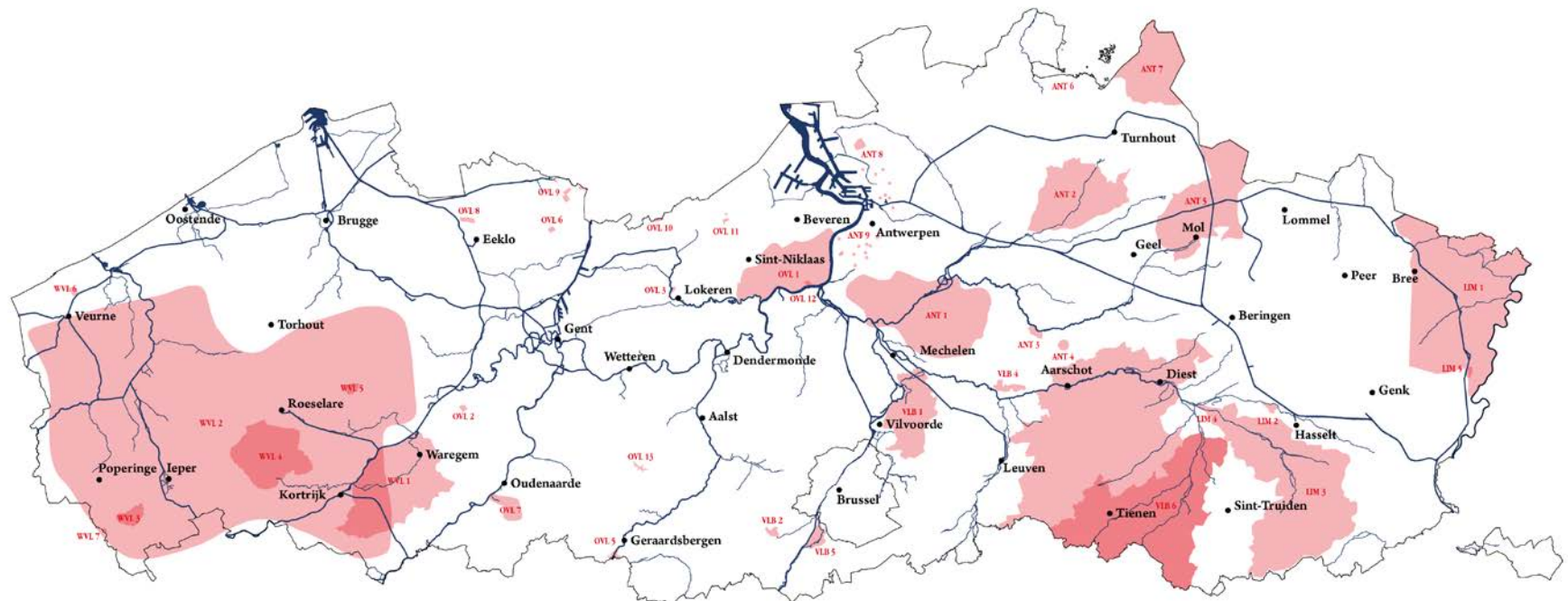
This team will support the actors in the field with their combined knowledge and



Our minister did agree to fund the program



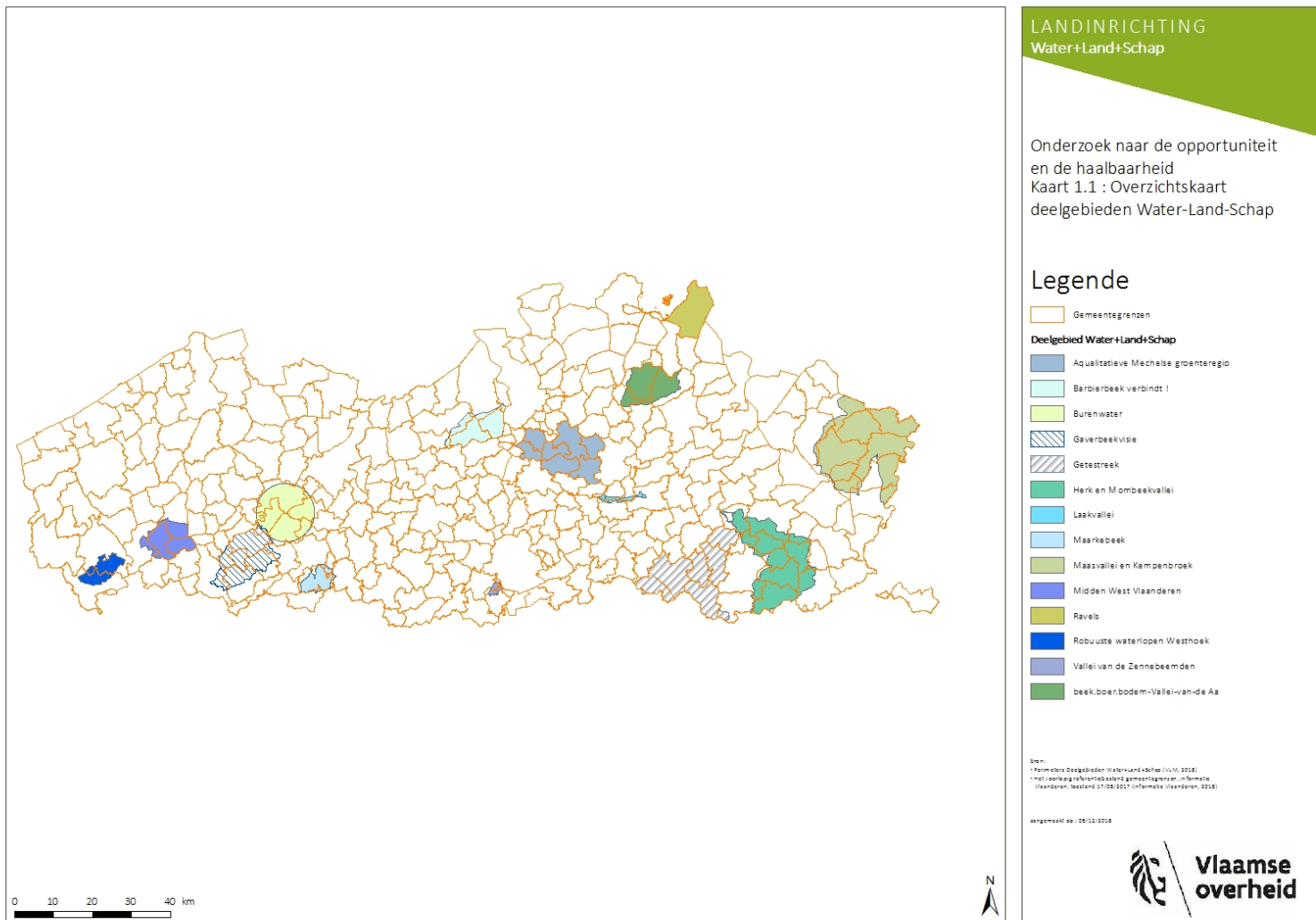
Our call for proposals gave us 40 initiatives!



West-Vlaanderen
WVL 1: Gaverbeekvisie-Harelbeke-Anzegem - Intercommunale Leiedal
WVL 2: Bovenbeekvisie-Harelbeke-Anzegem - Intercommunale Leiedal

Vlaams-Brabant
VLB 1: Floordambos-Barenbos-Steenokkerzeel - gemeente Steenokkerzeel
VLB 2: Bovenbeekvisie-Harelbeke-Anzegem - Intercommunale Leiedal

14 selected areas

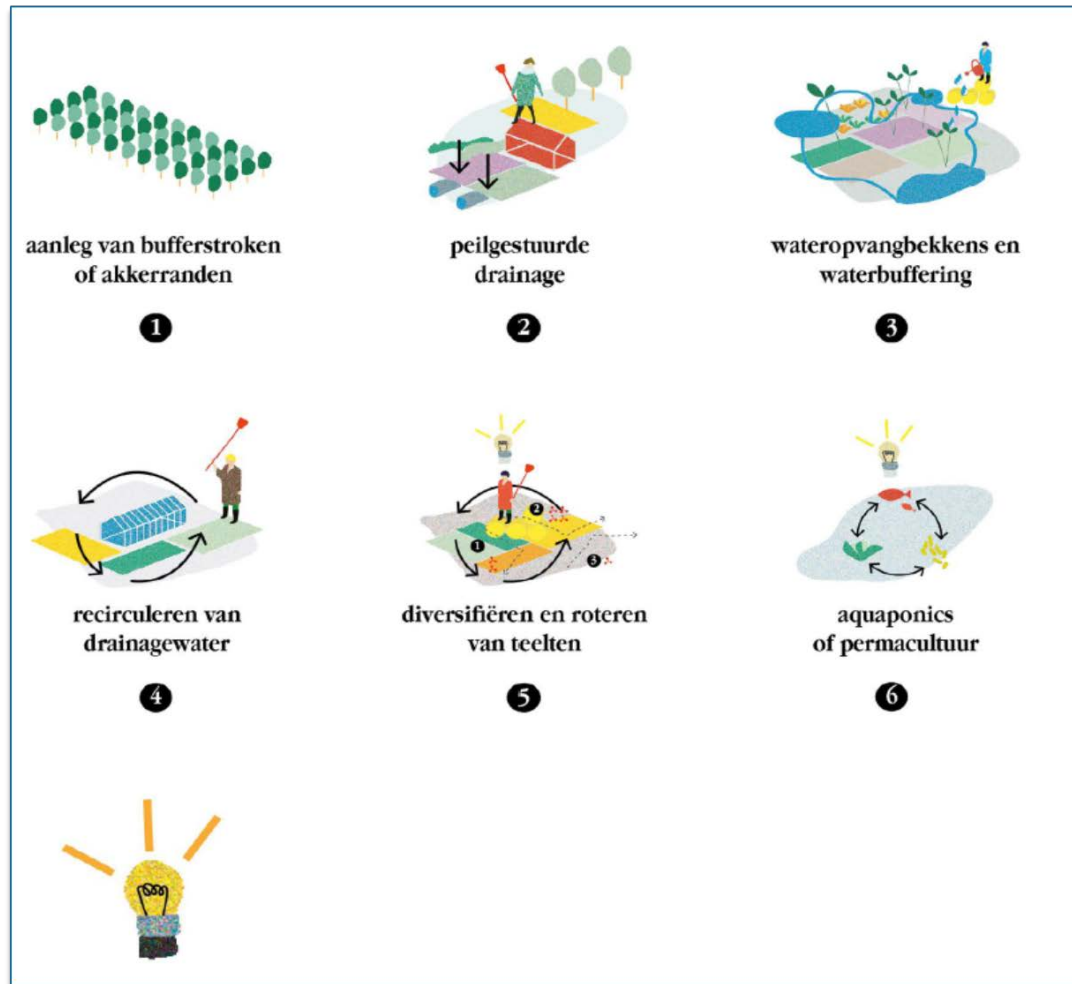


Local partners and program partners work together



**water + land + scha
n**

the first measures in the field



Advantages of a program?

- ✓ 14 coalitions set up measures simultaneously Acceleration of initiatives!
- ✓ Combination of goals, knowledge, instruments, funds (local and program level) Integrated approach!
- ✓ Best solutions are spread out in Flanders – coalitions learn from each other Learning platform!

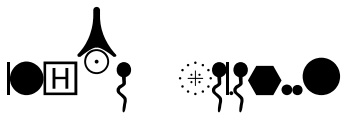
State **1** of the art?

Flemish **2** Land Agency

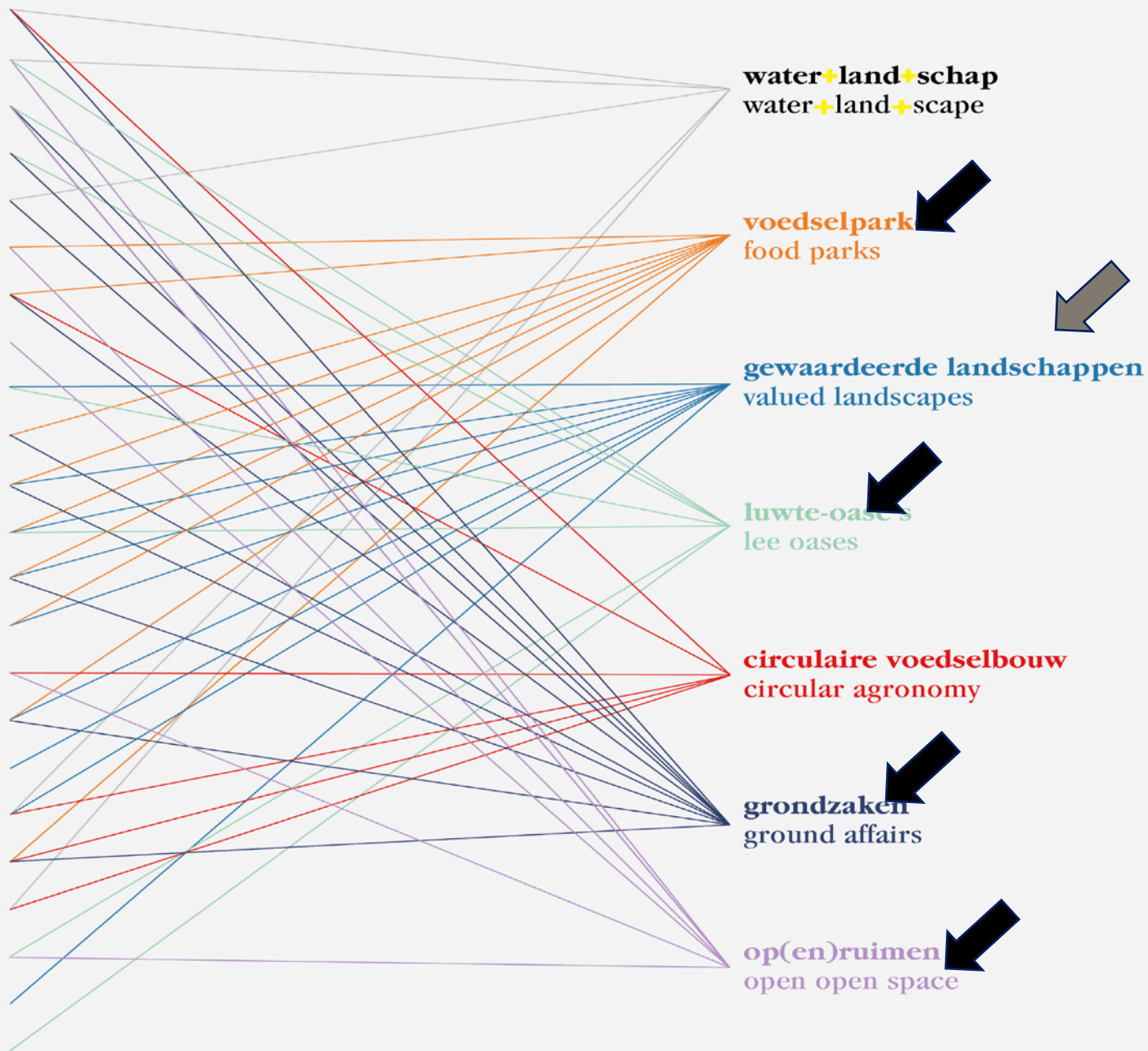
Open Space **3** Platform

First **4** test

Open Space **5** Movement!



- 1 **Smarter Agro**
Smarter Agro
- 2 **Baanbrekend groen**
Groundbreaking green
- 3 **Groene linken**
Green links
- 4 **Infrastructuurvrije open ruimte**
Infrastructure-free open space
- 5 **Bodemverzet**
Soil resistance
- 6 **Stadslandschap**
Cityscape
- 7 **Stapelbouw**
Stack agriculture
- 8 **Groen-blauwe wijken**
Green-blue neighbourhoods
- 9 **Tuinderijen**
Gardens
- 10 **Voedselparken**
Food parks
- 11 **Boerennatuur**
Farmers' nature
- 12 **Landzorgcentra**
Land care centres
- 13 **Pachtregisser**
Lease director
- 14 **Landschapsdelen**
Landscape sharing
- 15 **Paarse sproeten**
Purple freckles
- 16 **Ketencoördinator**
Chain coordinator
- 17 **Graskracht**
Grass power
- 18 **Klimaatboeren**
Climate farmers
- 19 **Landbouwontwikkelingsparken**
Agricultural development parks
- 20 **Agro-industrieterreinen**
Agronomy sites
- 21 **The Wild Rest**
The Wild Rest
- 22 **Edele landschappen**
Noble landscapes
- 23 **Keurmerklandschap**
Quality marked landscape



a program for valued landscapes?



Developing nature and
landscape qualities



A local economy based
on and enhancing the
landscape quality



Building identity,
social cohesion,
Proudness



2013

2014

2015

2016

2017

2018

2019

2020

Het open ruimte offensief

**Het
open
ruimte
platform**

leertraject

testtraject

beleidstraject

Ope- ratie open ruimte

Open R

open
ruimte
beweging
space
movement

De Het open open ruimte ruimte werk- plat- en form

**open ruimte
beweging**

vlaamse landmaatschappij
architecture workshop
houthuys architecten

- departement omgeving
- vereniging van vlaamse provincies
- vereniging van vlaamse steden en gemeenten
- koepel van de regionale landschappen
- vlaamse vereniging voor ruïne en monument
- kultuuren architectuur onderzoeksgroep p.poli vanland

[illegible]

- agentschap onderzamen
- agentschap zorg en gezondheid
- agentschap voor natuur en bos
- agentschap wegen en verkeer
- agribuursectoren
- architecture workroom
- agunfa
- arbeid & milieu voor
- band heer leefbaar
- bosch-slabbers
- bioloran
- beveiling
- boeren en haren
- boerenbond
- boerenbondspassant
- bolhuis
- bont
- bosbouw architecten
- brussel lectuif
- buisingood oostende
- cluster
- de cirkel
- de kiefjaar
- de kintjaar
- de landmooten
- de waterkant

- department landbouw en visserij
- department omgeving
- dames medica
- dapperheidscrozier
- een knaafraz
- eigle
- cransnobegeschool brussel
- foliagien
- generatie sloes
- generatie slui-gillie-waas
- generatie roesdier
- generatie reist
- gecond leven
- graafhuik
- hogeschool gret
- ingre
- instituut voor landbouw en visserij onderzoek
- instituut voor natuur en bos onderzoek
- infaupn publieke ruimte
- innovatiecoöperant
- intercommunale ledelal
- iera
- keempen open ruimte platform
- keimboscentrum vlaamse steden
- kaleveva
- lans
- landelijke vbanderen
- landelijke gilden
- landelijke mobiliteit westhoek
- lor
- loket onderhoud buitengebied
- maatschapwepers
- markante kempen

- anias-trad
- anibielen en openbare werken
- meerbepelders
- natuurlijk groen
- aanvullend
- overvloedig ontgind
- openbare vlamme
- afvalstoffenoverschrijp
- parkoedigevep
- pit 255
- paan aanwerpen
- paan vlaams-brabant
- paan namura
- provincie aanwerpen
- provincie limburg
- provincie oost-vlaanderen
- provincie vlaams-brabant
- provincie west-vlaanderen
- raad van belang
- regionale landschappen koepel
- af behaasde kouters
- af dijftand
- af hangenouwe vueren
- af heuveland
- af kengen mansland
- af kleine en grote oete
- af lage kengen
- af meertjeoland
- af noord-hageland
- af pajmenteland mannevallei
- af rivierestland
- af schelde-darmen
- af vlaamse aedonen
- af voerkempen
- af westhoek
- af mid-hageland
- re-st
- riktoho/vredesclandland
- riverpark mannevallei
- sauerelshuizen
- serfites
- stad aanwerpen
- stad beuge
- stad debrice
- stad erikbe

stad genie
stad gent
stad geraardsbergen
stad kortrijk
stad lukerna
stad oostende
stadsbeoordertj kortrijk
stedenbeleid
straatpauze groene zoeg
team vlaams bouwmeester
terre en vac
tunatoniometers
trage wegen vzw
tulpen van viente
universiteit van antwerpen
universiteit van gent
universiteit van harelit
universiteit libre de bruxelles
urban crop solutions
urban smart farm
vlaamse adviesraad voor
innoover en ondernemen
vch
vecetis
vereniging ecologische natuur en
en berges
vlaams instituut voor
technologisch onderzoek
vloio
vlaams kenniscentrum water
vlurie
vlaamse landmaatschappij
vlaamse milieumaitchappij
vlaamse maatschappij voor
sociale woningbouw
vlaamse vereniging voor
ruimte en planning
vlaamse waterweg
vereniging van vlaamse steden en
gemeenten
vereniging van vlaamse
provincies
voedscheams
volterra
voordland
vrienden van de zwoluse
dorpen
vrije universiteit brussel
wachtbe vzw
waterconservering westvlaad
werkgroep 71 enaue
werkgroep stadslandbouw gent
wereld
waaibaven aantevoen



Website VLM :

<https://www.vlm.be/nl/themas/platteland/openruimteplatform/>

nieuwsbrief VLM :

<https://www.flexmail.eu/f-1722e8676dfb88b7>