



# Beyond EDP

Interreg Europe



European Union  
European Regional  
Development Fund

## Transferring EDP model to local level

Speaker name Ioan Levitchi

Regional Development Agency Centru

10<sup>th</sup> December, 2020

# Centru Region | RDA Centru

- 2.32 million people
- 2,6 % unemployment rate
- 59856 active companies
- 17 industrial parks
- 9 hubs and co-working spaces
- 2 emerging DIHs
- 7,33 bln. Euro foreign investment
- 50% - state aid intensity
- 34.100 km<sup>2</sup> surface
- 6 counties: Alba, Braşov, Covasna, Harghita, Mureş, Sibiu;
- 57 cities
- 57,2 % urbanization rate



- Public utility NGO with over 20 year experience
- Past: Implementing Agency for Phare Programs and other governmental programs; Intermediate body for ROP 2007 – 2014, Intermediate Body for Competitiveness OP 2007 – 2014 (SME's component)
- Present: Intermediate body for ROP 2014 – 2020
- Future – Managing Authority for ROP Centru 2021 - 2027
- Business support
- Enterprise Europe Network Membership
- Over 2000 projects with more than 2 billion Euros budget



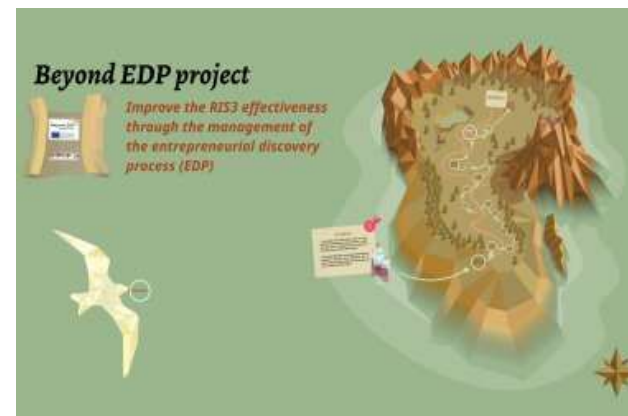
# Using the EDP outside S3 Implementing process

- RDA Centru became a best practice supplier for the regional actors involved in the EDP
- A private entity adopted our EDP model of quadruple helix ideation and replicated it at local level in order to generate projects and partnerships to help the local innovation community (for some of the projects they offered also consultancy services)
- During two months they organised 4 meetings on the topics of Industry 4.0, Energy and Smart City, Food and Health, with over 90 participants, generating over 40 project ideas, working on 15 project fiches and 10 months later, 5 of the projects are in advanced maturing state, while other are under preparation for submission in future calls
- The working groups were transformed in communities and the participants kept on working together and cooperate – **the advantages of a high resolution territorial approach** |



# Impact and Result

- The EDP local organiser informed RDA Centru about the results (EDP reports and lists of project ideas) and some of the projects were included in the RIS3 Project Pipeline
- A few projects coming out of this process are now ready to be submitted under ROP 2014-2020 – Priority Axis 1 as innovative projects (SMEs cooperating with TTOs and Proof of Concept Scheme)
- The Health community is providing now solutions for the local response to the COVID crises



# Conclusions

**For us, the request to apply the EDP process at local level was a surprise**

**We followed the process without getting involved**

**The success of this piloting made us think about the possibility to extend the model to other cities or counties in the Region (under the condition to find a local organization interested to take the lead)**

**The local character seems to be the main driver for transforming these ad hoc working groups in communities of people still working together.**





# Beyond EDP

Interreg Europe



European Union  
European Regional  
Development Fund

Thank you!  
Ioan Levitchi | RDA Centru

[ioan.levitchi@adrccentru.ro](mailto:ioan.levitchi@adrccentru.ro)



*Beyond EDP*