



ROPAŽU  
NOVADS

GREENWAY IN ROPAŽI COUNTY



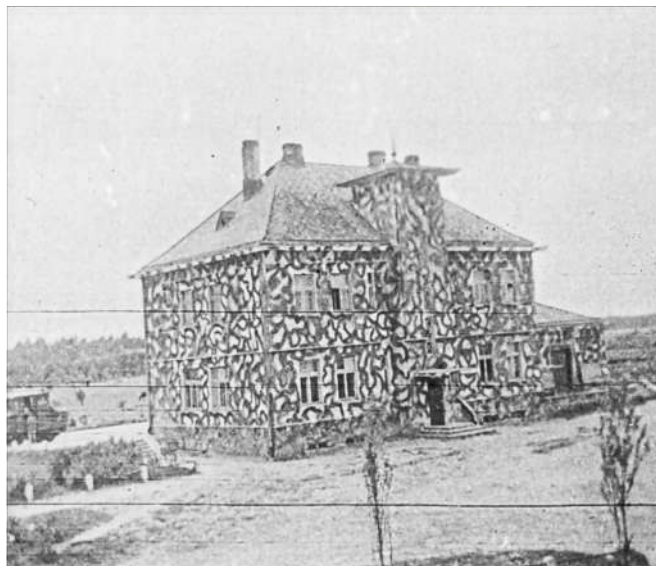


## 1935-2020 FACTS



November 26, 1935 Rīga – Ērgļi  
1937 – Kangari station

Waiting room, work room, staff  
room and buffet



2002 – closed!

2009 – dismantling of railway  
Cultural monument of local  
significance



Kangari station



Bridge over Kivuļurga



Bridge over Pietēnupe

Augšciems station



# Kangari station – tourism information point



The visibility of Kangari station  
"Nākamā pietura – Kangaru stacija"



Station renovation



Counter



5 information stands

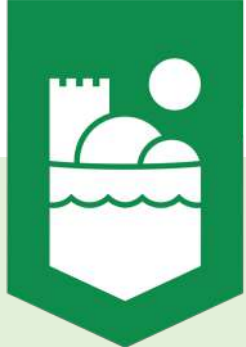


25 road signs



Railway line cleaning





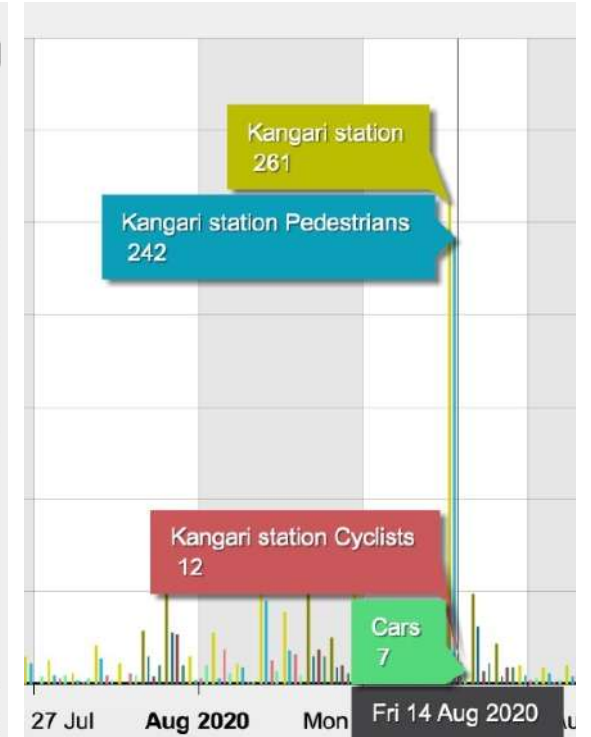
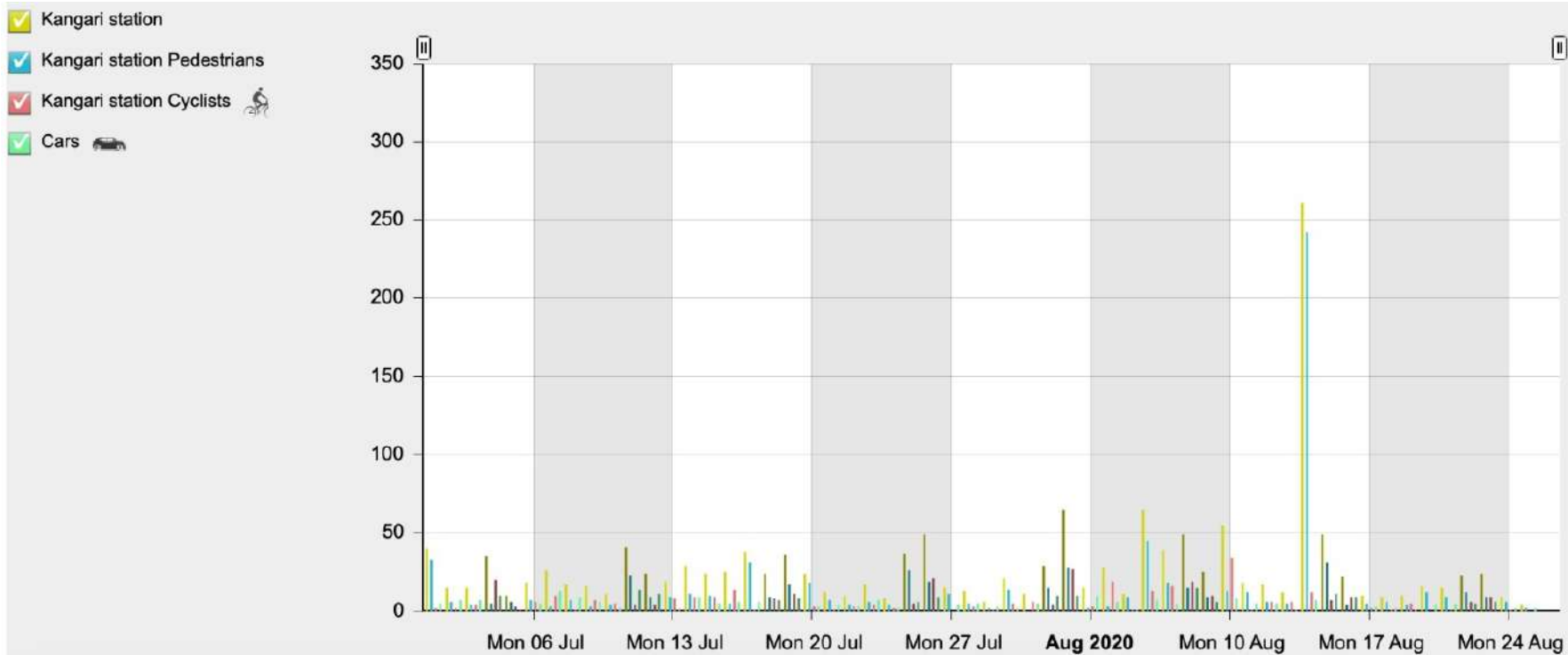
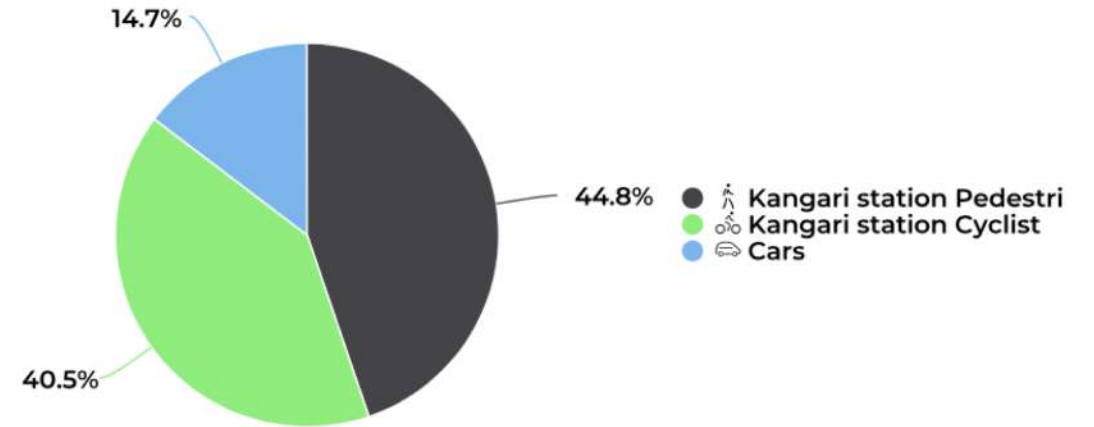
# 2020 PORCH REPAIR



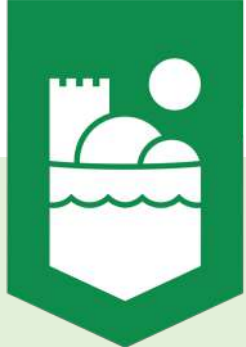


# Traveler counter

July 6 – September 7 -> 1937







# Nākamā pietura – Kangaru stacija 2019



Miks Dukurs  
Fools on Parade  
Around 200 visitors  
Families with children  
27-45  
Listeners from nearby counties



- ♥ Nice event, hopefully with sequels ☺
- ♥ That day was an awesome event! Artist didn't go off the stage for long, super! Thanks!
- ♥ Such events attracts my heart more and more to Ropaži. Keep up the good work!





# Nākamā pietura – Kangaru stacija 2020



Carnival Youth  
Reinis Jaunais  
Around 450 visitors  
Families with children  
20-45 g.v.  
All Latvia



- ♥ The best stop in my life so far - yes, Kangari Station!
- ♥ When people knows and understands what and why... :)
- ♥ Thanks! Great station!







# POP-UP workshop space



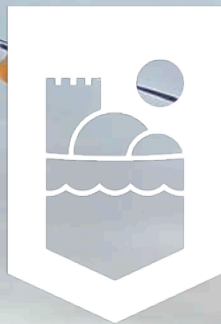
Space for 20-25 people  
Electricity  
Facilities  
Parking  
Projector, WIFI, screen



KANGARU  
STACIJA







ROPAŽU  
NOVADS

# GREENWAY IN ROPAŽI COUNTY

Signe Grūbe

