

VIPA

NATIONAL
PROMOTIONAL
INSTITUTION

POWERTY

Interreg Europe



European Union
European Regional
Development Fund

**Policy changes to
make renewable
energy easy to use
and install**

II Interregional Thematic Seminar

9 April 2021

Renata Adomavičienė

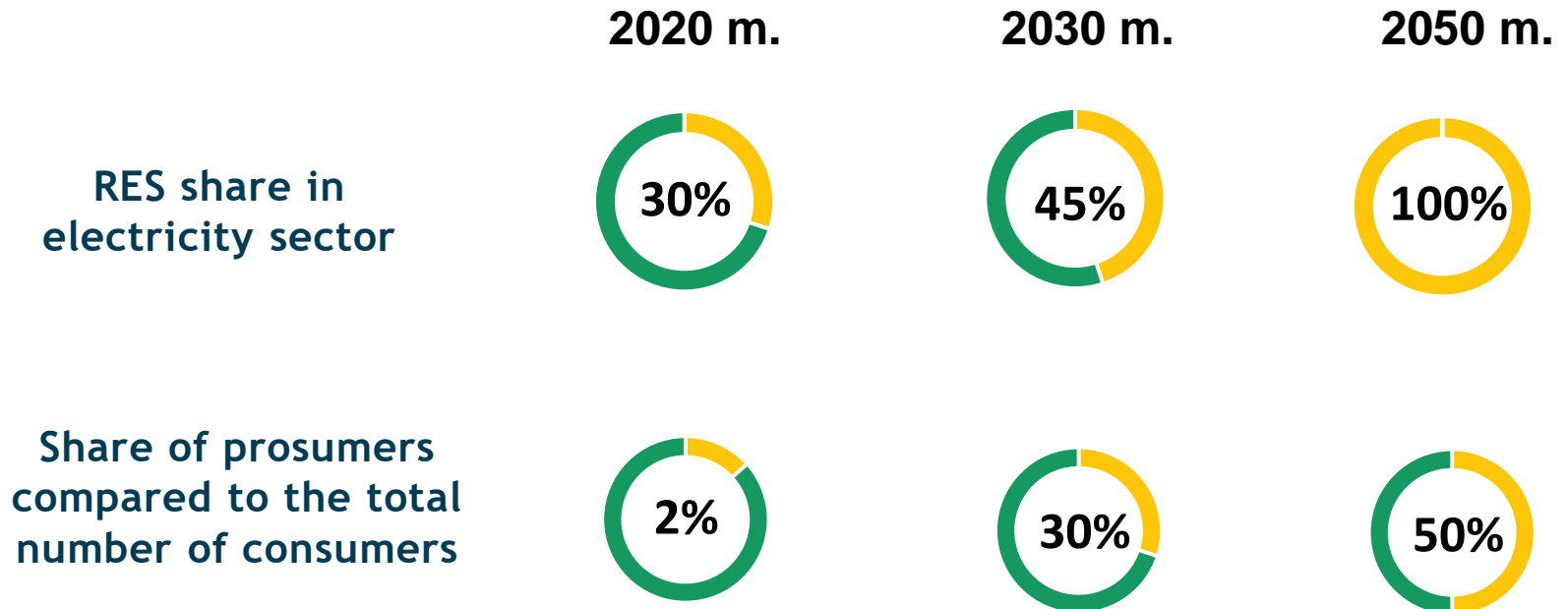
Simplification of administrative procedures

Challenges

- ❖ Lithuanian legislation to install small scale renewable energy source power plants was difficult and lengthy.
- ❖ Very limiting legislation related to the prosumers who produce electricity from renewable energy sources.



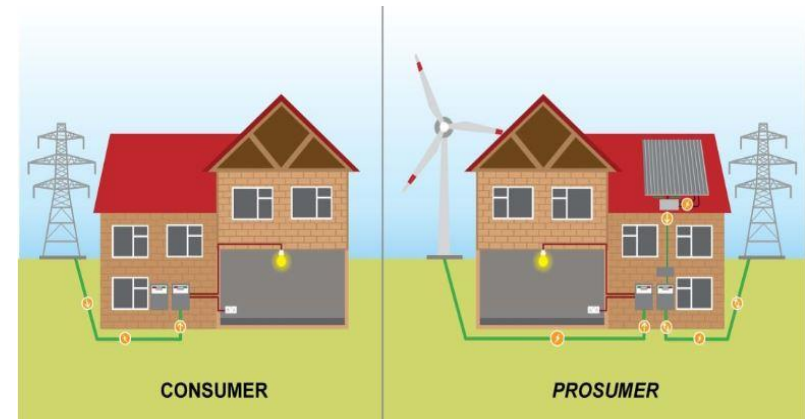
Long term National Energy Independence Strategy of Lithuania



Simplification of administrative procedures

After review of legislation amendments were taken to foster use of renewable energy sources:

- ❖ the prosumer definition was identified and clarified
- ❖ companies (not only natural persons) can become prosumers
- ❖ number of procedures, documentation and days needed to become a prosumer was reduced. Procedures from 11 to 4; documentation from 30 to 3 and days from minimum 105 days to up to 21
- ❖ the simplified procedures were applied to power plants of 5 kW, this number was increased to 10 kW in 2018 and to 30 kW in October 2019



Simplification of administrative procedures

- ❖ number of days to install RES reduced from 105 days to 21 days
- ❖ easy and simple process for power plants up to 30 kW
- ❖ lower fees for households to become prosumer
- ❖ the prosumers were allowed to build renewable energy power plants of up to 50 kW, this number increased to 100 kW in 2018 and to 500 kW in October 2019



Simplification of administrative procedures

- ❖ the prosumers were allowed to build renewable energy power plants of 100 MW, this number increased to 200 MW in October 2019. By distributing 100 MW to household and non-household electricity consumers differentiating fees for power plant connection to the grid was introduced in 2018 to make it cheaper for households





Number of prosumers



Installed power of RES for prosumers, MW

❖ Highlight not just reductions in energy poverty but also the increased participation of vulnerable groups in decision-making, and improved access to energy market mechanisms.

❖ Due to these changes, new prosumers from 2,200 in 2019 increased till 3,700 new prosumers in 2020, and 18.8 MW RES installed capacity in 2019 increased till 38.5 MW RES installed capacity during 3 quarters of 2020 accordingly.

VIPA

NATIONAL
PROMOTIONAL
INSTITUTION

POWERTY

Interreg Europe



European Union
European Regional
Development Fund

Thank you!

www.vipa.lt

[@vipa.lt](https://www.instagram.com/vipa.lt)