

Eastern & Midland Regional Assembly



Welcome to **NEXT2MET**
Policy Learning Event





Midland Region

Longford

Westmeath

Offaly

Laois

Eastern Region

Louth

Meath

Kildare

Wicklow

Dublin Region

Fingal

Dublin City
Dún Laoghaire
-Rathdown

South Dublin

WHAT WE DO?

Enabling Regional Planning & Sustainable Development



How does EMRA enable regional development;

Strategic Planning

- **Make policy** – new Regional Spatial and Economic Strategy (RSES)
- **Provide oversight** – statutory observations on local authority development plans and variations

EU Affairs

- **Manage funds**– Regional Operational Programmes and Monitoring Committees
- **Provide supports** – Committee of the Regions and Irish Regions Office in Brussels

Effectiveness in Local Government

- **Promote co-ordination**– between EU/ National/ Regional and local governance
- **Develop knowledge** – Research and evidence base for implementation and monitoring

RSES for the Region

- RSES made on 28th June 2019
- Marked the finalisation of an Intensive Process



Eastern & Midland Regional Assembly

Regional Spatial & Economic Strategy (RSES) 2019-2031

Executive Summary



Tionscatal Fíreann
Project Ireland
2040



Regional Spatial and Economic Strategy

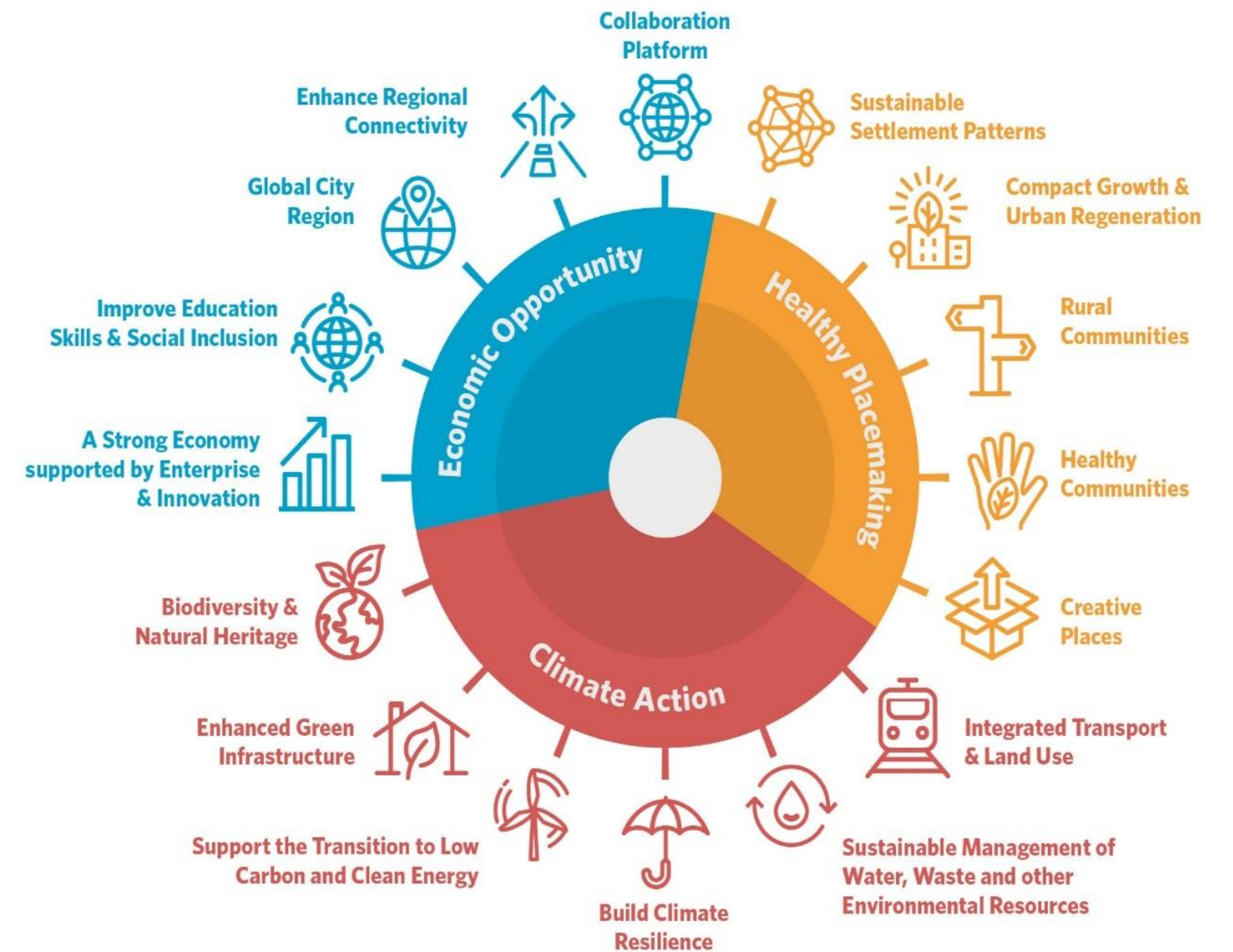
Spatial Strategy

Metropolitan Area Strategic Plan

Economic Strategy

Investment Framework

Climate Strategy



KEY PRINCIPLES

Healthy Placemaking

To promote people's quality of life through the creation of healthy and attractive places to live, work, visit and study in.

Climate Action

The need to enhance climate resilience and to accelerate a transition to a low carbon economy recognising the role of natural capital and ecosystem services in achieving this.

Economic Opportunity

To create the right conditions and opportunities for the region to realise sustained economic growth and employment that ensures good living standards for all.

Eastern & Midland Regional Assembly



Thank You

Malachy Bradley

Assistant Director/ Senior Planner