



CIRCULAR ECONOMY



« Ecodesign in the cultural sector from set preparation to waste management »

OBJECTIVE:

To encourage professionals in the cultural sector of the Paris region to use the best tools and practices for the ecodesign of sets and waste management that are available and/or adaptable to the sector.

4 ACTIONS

1. Identify the actors who share the same issues between sectors and between territories in order to have a global regional approach.
2. Identify the best practices working in favor of this objective through a referencing work and promote these tools when raising awareness (dedicated trainings, diffusible supports...).
3. Carry out a pilot project on a film set in the Paris Region in order to implement all the recommendations identified.
4. Diffusion of the results



ecoprod

Green Screen
Interreg Europe



1

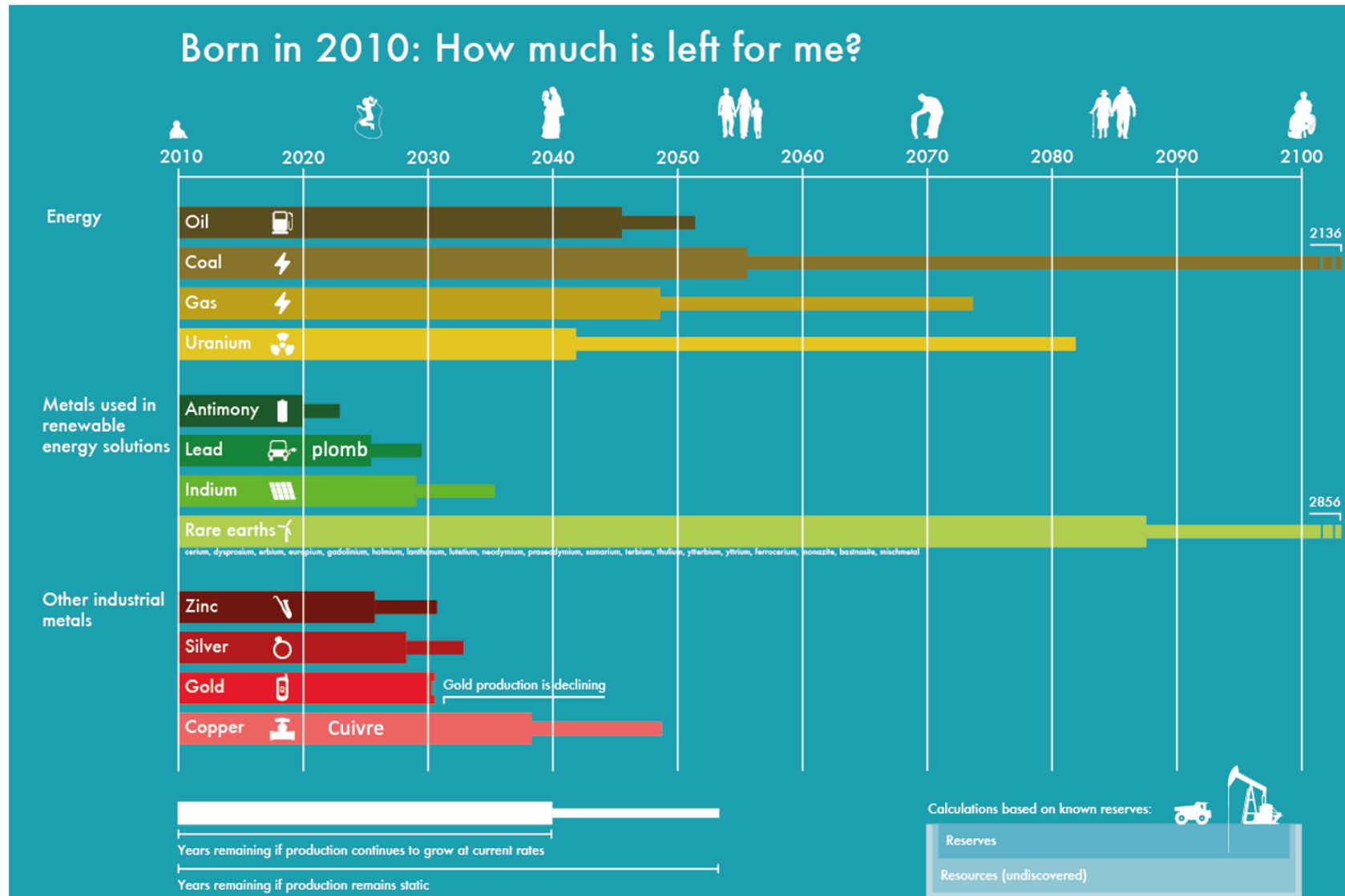
Lack of awareness of eco-design and waste recovery.

2

Lack of practical, centralized and accessible information

3

Logistical problems: recovery, storage, short times, geographical dispersion...



- **80% of the Image sector** (companies and payroll) and **50% of filming** takes place in the Paris region
- In 2020, a study conducted by the Ecoprod collective estimated a carbon footprint of **1.7 million tons of CO2** for the audiovisual and film sector in France
- **40% of the waste** from the performing arts and audiovisual sector in the Paris region has an **unknown outlet**.



- **1/5 of the impact** of a shooting is linked to the **sets: construction and deconstruction** which is done in a short time, just like the the events' sector.
- On average, waste related to **sets** represents **15 tons per film**.
- Significant potential for reuse and recovery of sets.



- 3 active cultural reuse/recycling centers :



➤ la Réserve des Arts



➤ la Ressourcerie du Spectacle



➤ la Ressourcerie du Cinéma



- **50%** have no knowledge of the ecological qualities of the materials used
- **71%** are not asked by the production or the stage management about the installation of the office stage management elements
- **91%** believe that the studio is the best place to promote ecodesign
- **72%** believe that 30% or more of a set can be made from removable and recoverable sheets
- **69%** store office tools that are reused from film to film
- **86%** are in favor of shared access to information sources
- **99%** would be interested in a dedicated eco-design training





- Organize the **sharing of professional expertise and information** on materials, products, suppliers and service providers.
- **Train professionals** in eco-design and circular economy.
- In the choice of locations for preparation, construction and filming, **take into account accessibility and distance and the grouping of sets.**
- **Extend the preparation time** for a better implementation of an eco-design of sets and thus inform the productions of the work really done during this phase of work, but also on the potential savings induced by a better controlled preparation.
- **Improve the quality of the exchange between the decoration team and the stage management** and/or the productions concerning the office equipment: sorting garbage cans, coffee machine, water bottles, but also vehicles, preparation area...



- Implement a referencing as complete as possible of **alternative methods, materials and supplies to the most polluting products**, in collaboration with suppliers.
- Cross-reference this list with **tests and video tutorials** (materials, etc.), tests currently carried out by Écodéco Ciné.
- Support the **reuse of set sheets**.



- Need of temporal and financial means for a **rational routing of the furniture and accessories after use**, during and after the shooting, **towards circuits of reuse, recycling or storage**.

- **Broadcasting** of videos to raise awareness of the circular economy, through testimonials and concrete initiatives in the Paris region: <https://youtu.be/BlijyQKeKWRk>



Synthesis of the Circul'Art 2 study:

https://www.filmparisregion.com/sites/default/files/2021-04/Synthese_CirculArt2.pdf

Ecoprod's Practical Guide for sets: https://www.ecoprod.com/images/site/fiches-pratiques/ECOPROD_FICHEDECOR_PS1.pdf

Ecoprod's Job card for sets : https://www.ecoprod.com/images/site/fiches-pratiques/ECOPROD_FICHE_DECO_HD.pdf



Thank you

Joanna.gallardo@filmparisregion.com