

Plzeňská aglomerace 

Create the future

2021+

# Pilsen Agglomeration Strategy

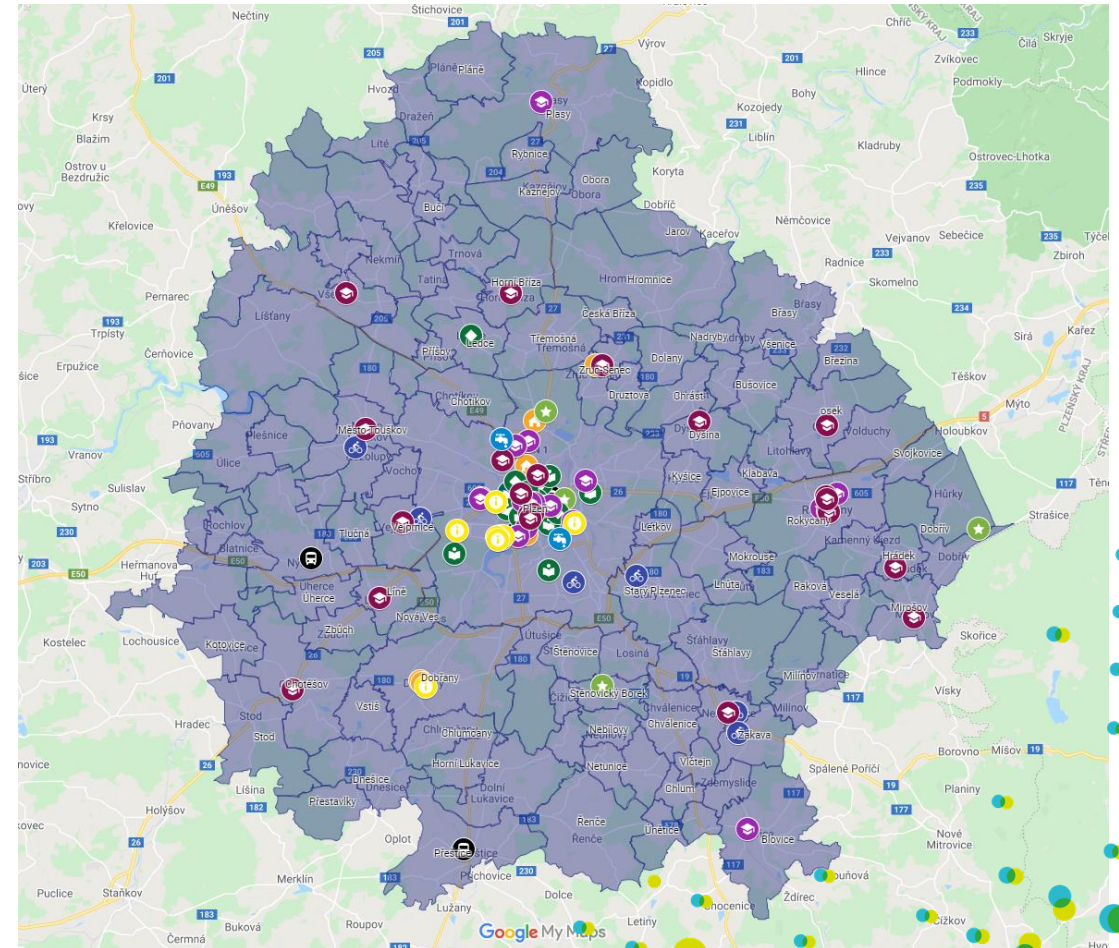
MARKÉTA KUBIČKOVÁ

# ITI Strategy 2014 – 2020 in numbers

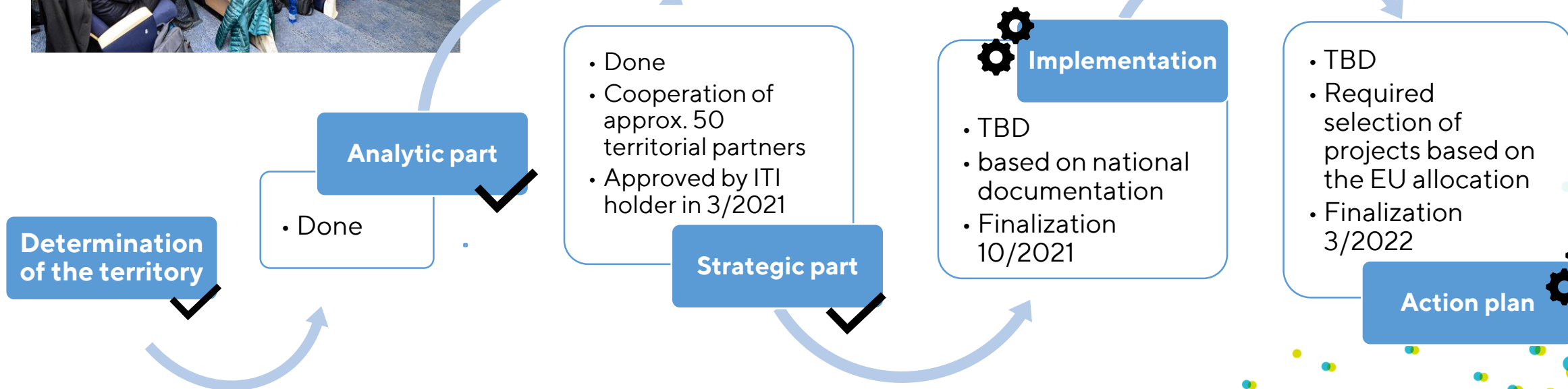
- City of Pilsen (ITI strategy holder) + 116 municipalities
- 310.000 inhabitants
- Supported 120 projects
- Invested EU allocation 120 mil. EUR

## Priority axis

- PA 1** Applied research, technical fields and fields with high added value  
*EU 30 000 EUR*
- PA 2** Mobility  
*EU 60 000 EUR*
- PA 3** Education and employment, social and health services  
*EU 22 000 EUR*
- PA 4** Technical infrastructure and environment  
*EU 8 000 EUR*



# State of preparation of Strategy 2021 - 2027



# Integrated solutions

## Pilsen agglomeration 2021+



Blue-green  
agglomeration

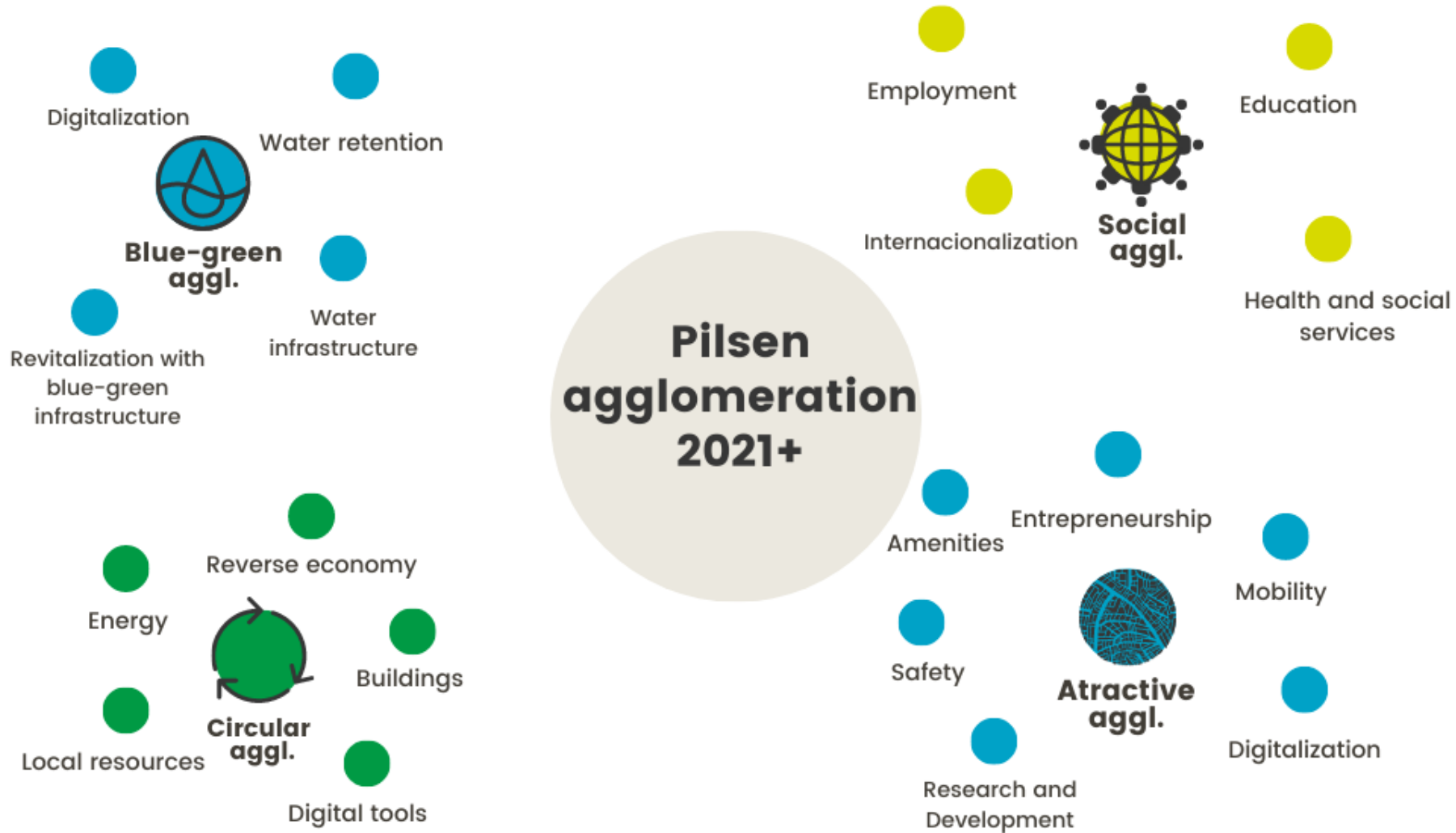
Circular  
agglomeration

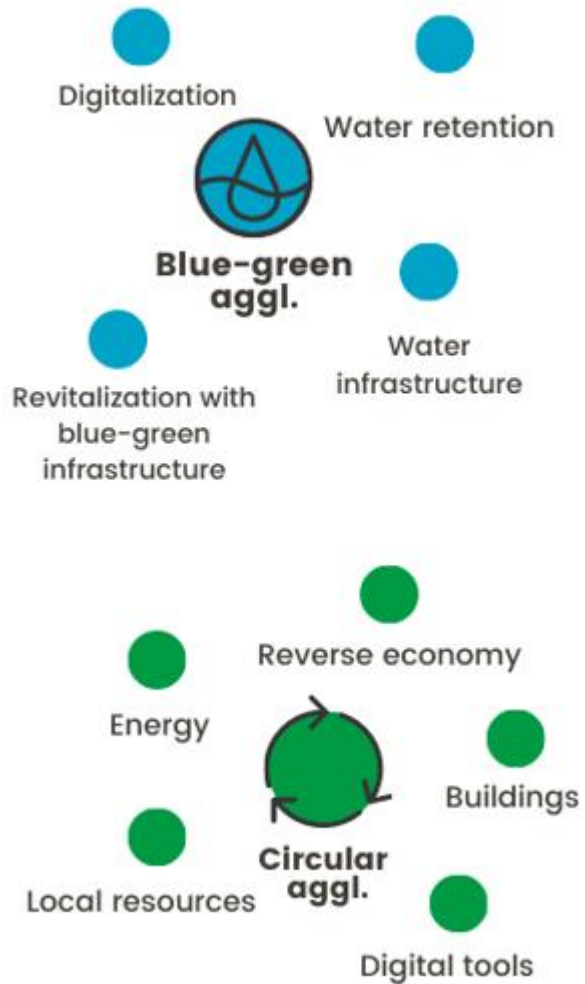
Social  
agglomeration

Attractive  
agglomeration

ITI 2021+







Financial source	AbCap of the PA ( EUR)	Expected allocation (mil EUR)	
Integrated regional OP	19 000	17 000	-2 000
OP Environment	45 000	8 000	-37 000

Actual key question:

**How to apply selection criteria?  
How to prioritize?**

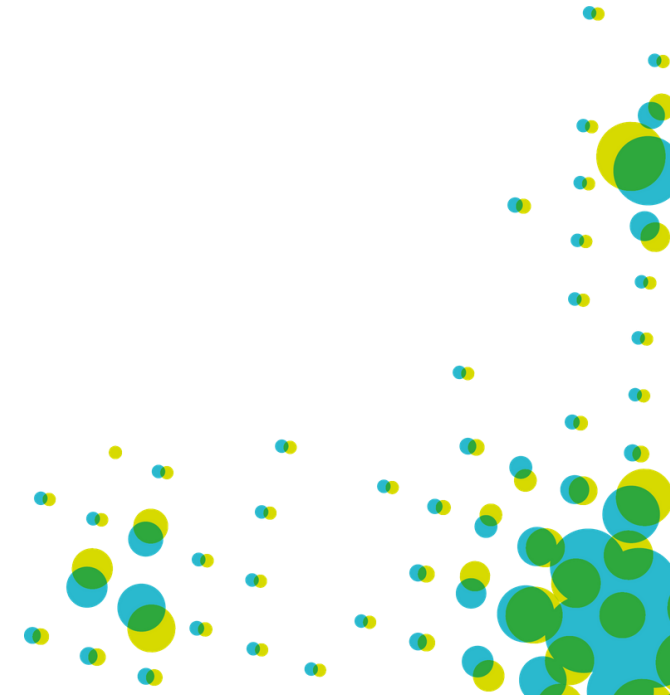
# Obstacles and challenges - ITI in environment field

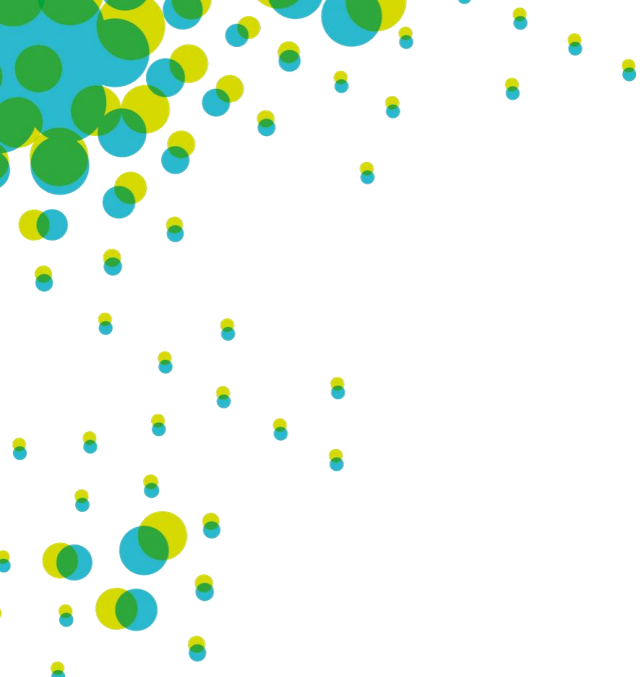
## Obstacles

- short-term perception of the problem
- insufficient best practice
- extreme bureaucracy
- High implementation costs

## Challenges

- Change mindset
- strengthen awareness through examples of good practice
- necessary integration of multi-source financing
- promote comprehensive and sustainable solutions





Plzeňská aglomerace 

Create the future

2021+

Thank you for attention.