



SHREC
Interreg Europe



European Union
European Regional
Development Fund

Kick off meeting

29 October 2019, Groningen, Netherlands

**SOUTH MUNTENIA REGIONAL DEVELOPMENT
AGENCY**

CONTENT

GENERAL
OVERVIEW
South
Muntenia
Region

SMRDA
MAIN
ACTIVITIES

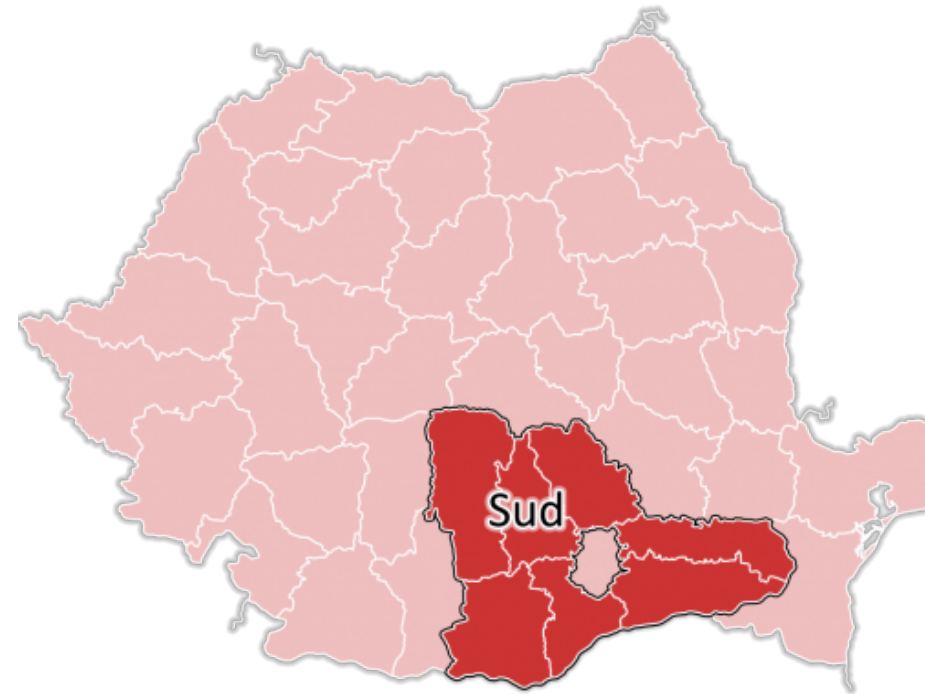
NATIONAL
POLICIES
addressing the
Transition to a
Low Carbon
Economy

POLICY
INSTRUMENT
addressed in
SHREC project

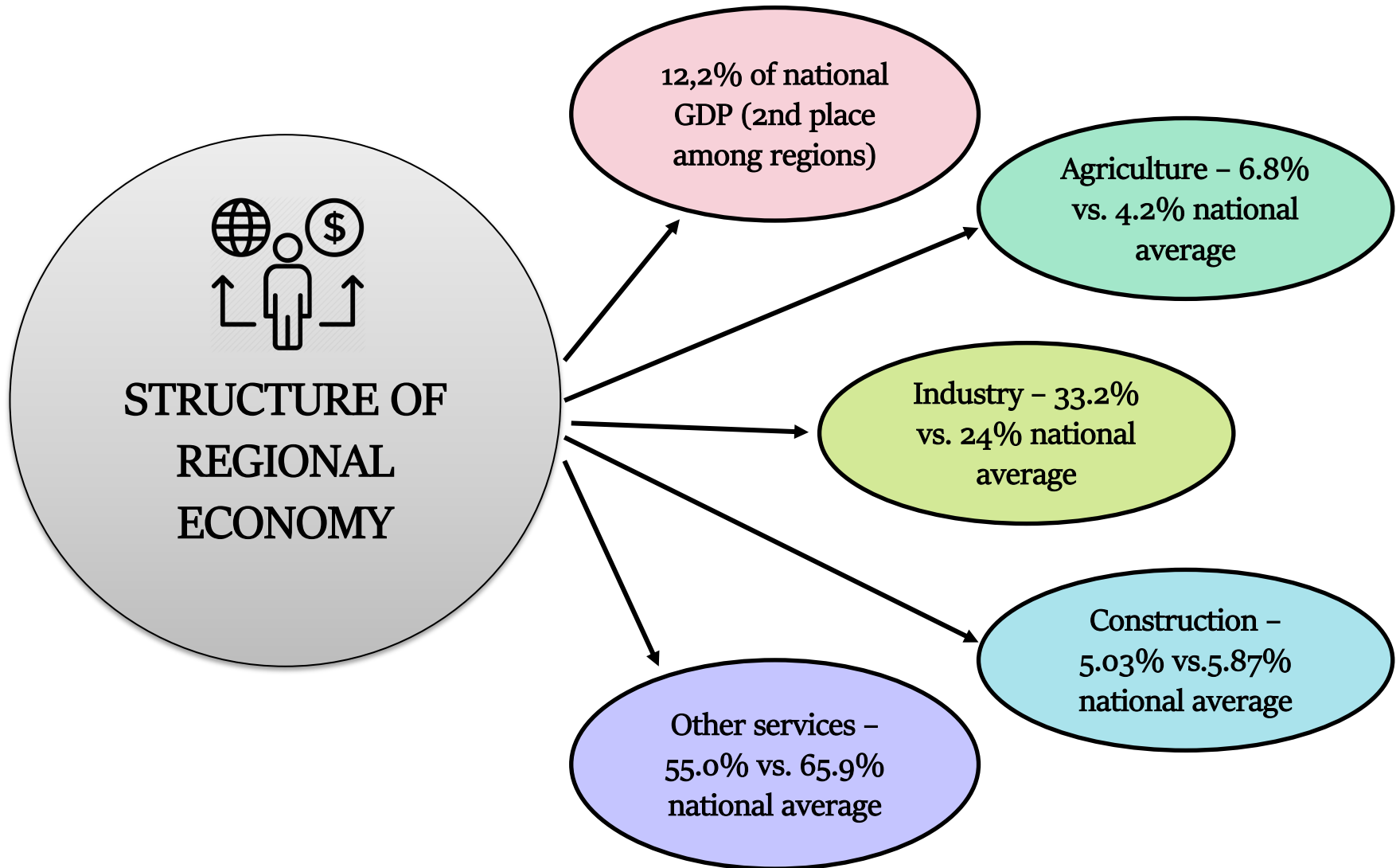


SOUTH MUNTENIA REGION - GENERAL OVERVIEW

- Located in the South-Eastern part of Europe and in the South of Romania
- South Muntenia Region - 34,467 km² total surface (14.50% of Romania's surface, 3rd largest region of Romania)
- Population – 3,031,555 inhabitants (2nd place among regions)

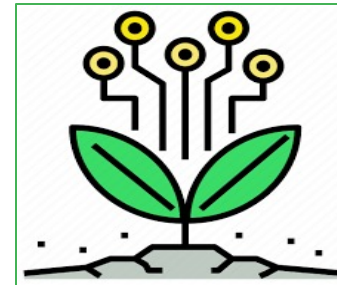


SOUTH MUNTENIA REGION - GENERAL OVERVIEW



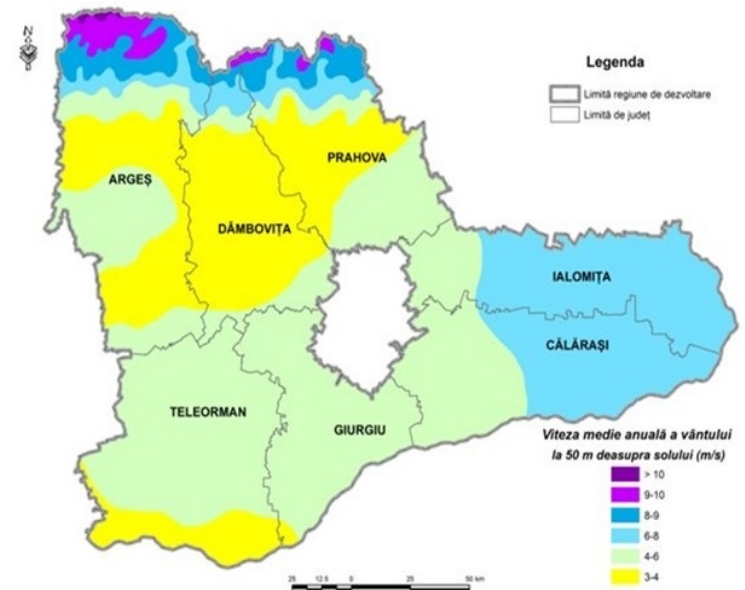
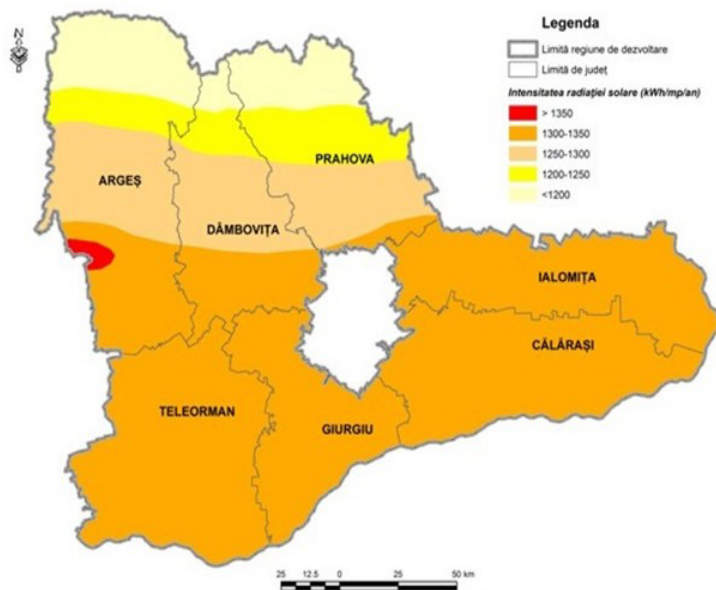
SOUTH MUNTENIA REGION - GENERAL OVERVIEW

- Strong geographic and economic disparities between North – South
- **5** universities (**4** located in Northern part of the region and **1** in Southern part)
- Main economic traditional sectors:
 - Automotive industry (Dacia Renault)
 - Petrochemical industry
 - Metallurgy
 - Electrical and Electro technical industry
 - Agriculture
- Main key drivers: agro food, tourism, renewable energy
- 57083 enterprises, out of which: only 132 innovative companies: - 84% SMEs (2016)
 - 71% operating in industry



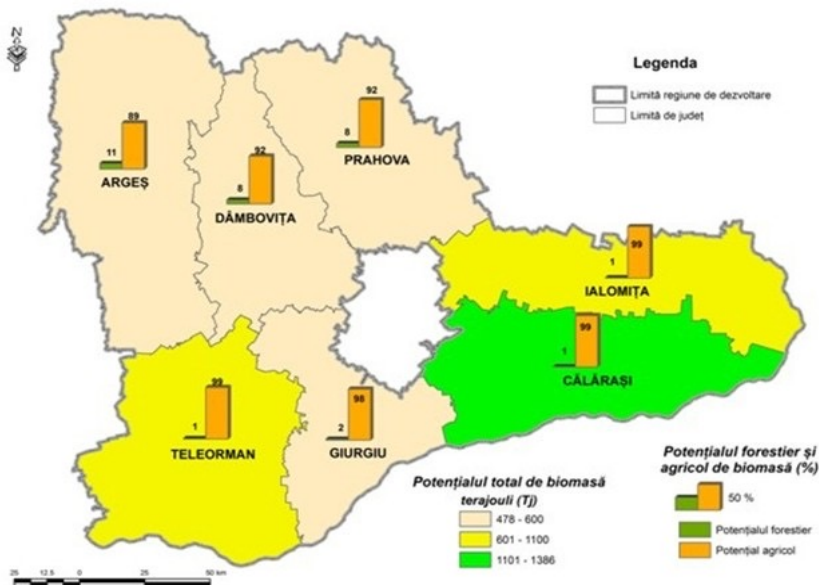
South Muntenia region - RES Potential

- SM has one of the highest solar potential - in the southern part (Teleorman, Giurgiu, Ialomița, Calarasi counties and south of Arges, Dambovita, Prahova counties), which is in zone II of solar radiation.
- The wind potential of the South Muntenia region is an average one in the national context, except for the northern part of it (the mountain area in the north of the counties of Prahova, Dambovita and Arges).



South Muntenia region - RES Potential

- The biomass potential of the SM region is 5,352.3 terajouli (Tj), of which over 95% is agricultural biomass (Calarasi county is in the 2nd place at the national level from the perspective of the resources of vegetal agricultural biomass).
- The micro-hydroenergetic potential is relatively high, especially in its northern area (Arges, Dambovita, Prahova).
- The rivers with potential for the construction of new power plants are: Targului River, Prahova, Teleajen, Dambovita, Ialomita, Doftana, Arges.



SOUTH MUNTENIA REGIONAL DEVELOPMENT AGENCY



Address:

General Constantin Pantazi Street, no.7 A, Calarasi City,
Calarasi County, Zip code 910164

Telephone: +4 0242.331769 and

+4 0728.026708

Fax: +4 0242.313167

E-mail: office@adrmuntenia.ro



SOUTH MUNTENIA REGIONAL DEVELOPMENT AGENCY

MAIN ACTIVITIES

- ✓ Intermediate Body for REGIO – Regional Operational Programme 2007 - 2013 and 2014 – 2020, financed by ERDF;
- ✓ Intermediate Body for SOP IEC – Sectoral Operational Programme “Increasing of Economic Competitiveness”, 2007 – 2013, financed by ERDF.

- ✓ Programs and projects portfolio management;
- ✓ Regional programming and planning;
- ✓ Ensuring the South Muntenia Regional
- ✓ Development Board secretariat;
- ✓ Promoting South Muntenia Region;
- ✓ Development of local partnerships.

IMPLEMENTED PROJECTS



Business Support on Your Doorstep



National Policies addressing the Transition to a Low Carbon Economy

2003

- Strategy for renewable energy utilization - approved by GD 1535/2003

2007

- The National Energy Strategy - approved by GD 1069/2007

2010

- National Renewable Energy Action Plan for Romania - The plan represents the official position for RES development

2014

- National Renewable Energy Action Plan 2014 – 2020 (NREAP III) approved by GD 122/ 25.02.2015

2016

- The National Energy Strategy 2016-2030, targeting 2050 as the latest perspective

2017

- Update of the National Renewable Energy Action Plan - 2017-2020 (NREAP IV) approved by GD 203 / 03.04.2019

2018

- The Energy Strategy of Romania 2019 – 2030, targeting 2050 (draft version)



SM RDA Policy addressed within SHREC project

Regional Operational Programme 2014 - 2020, Priority Axis 3
Support the transition to a low carbon economy

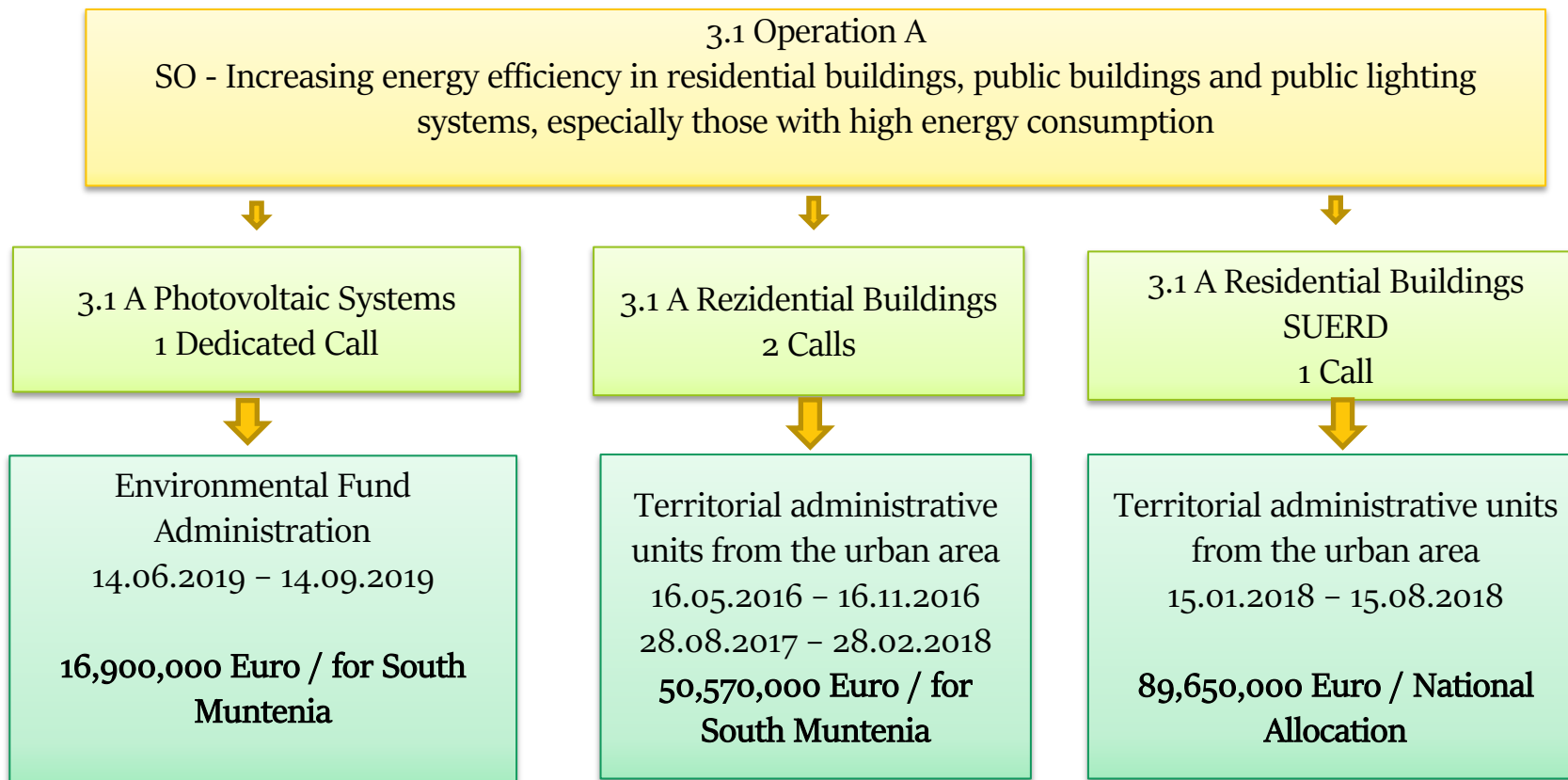
Investment priority 3.1 Supporting energy efficiency, smart energy management and renewable energy use in public infrastructures, including in public buildings, and in the housing sector.

3.1 Operation A –
Photovoltaic Systems
Residential buildings
SUERD

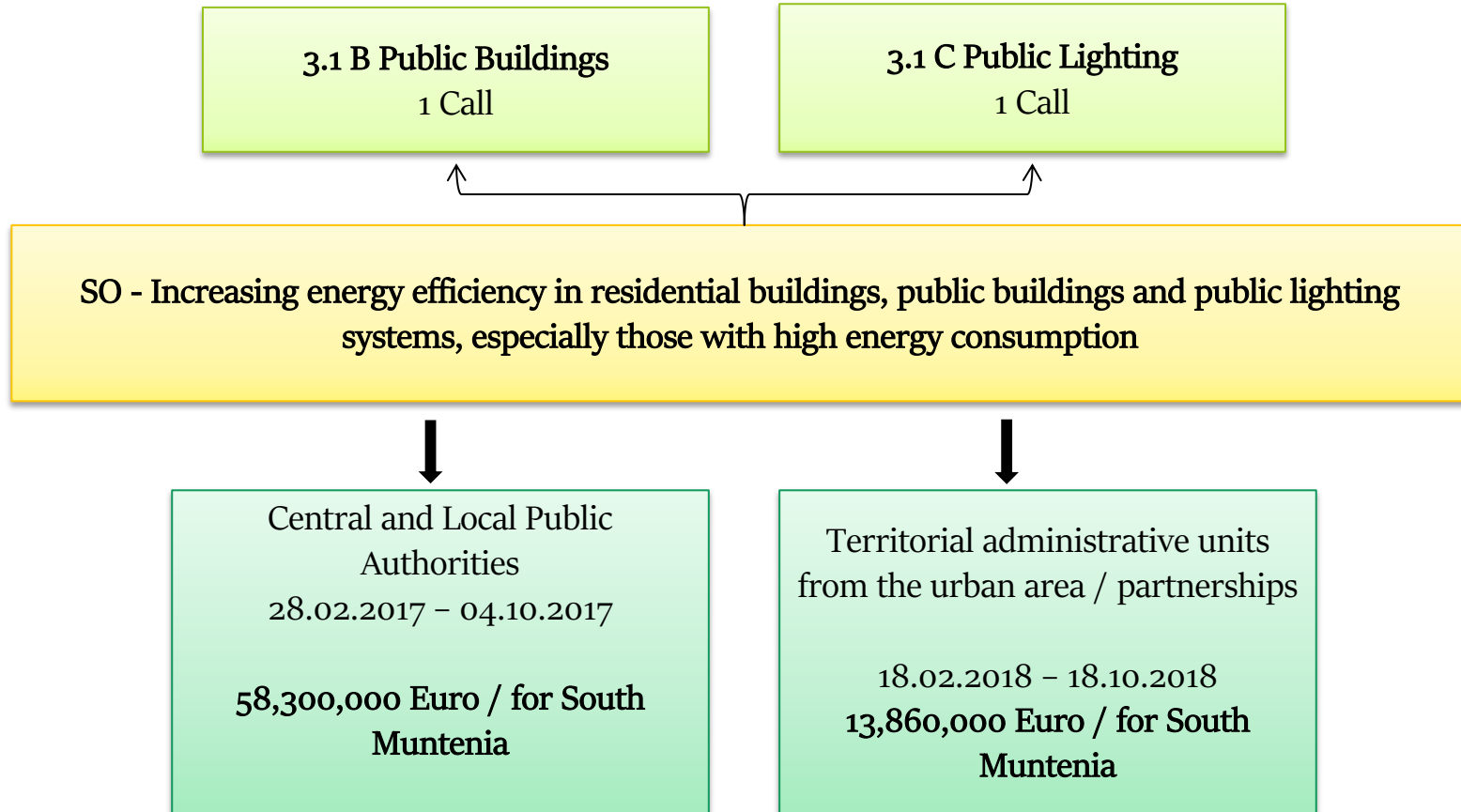
3.1 Operation B –
Public buildings

3.1 Operation C –
Public lighting

SM RDA Policy addressed within SHREC project



SM RDA Policy addressed within SHREC project





SHREC

Interreg Europe



European Union
European Regional
Development Fund

Thank you!
Gilda NICULESCU

Head of Development Department
South Muntenia Regional Development Agency
programe@adrmuntenia.ro



#SHREC
@SHREC_project

www.interregeurope.eu/SHREC