

# processum

## The Biorefinery Innovation platform

- Accelerating biorefinery ideas

Yvonne Söderström Nordin

22.09.2020

PART OF **RI.SE**



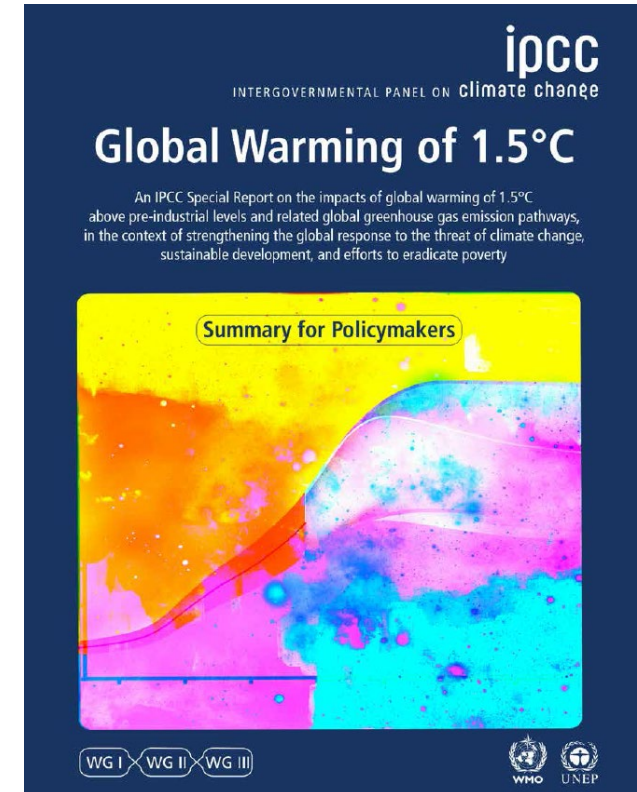
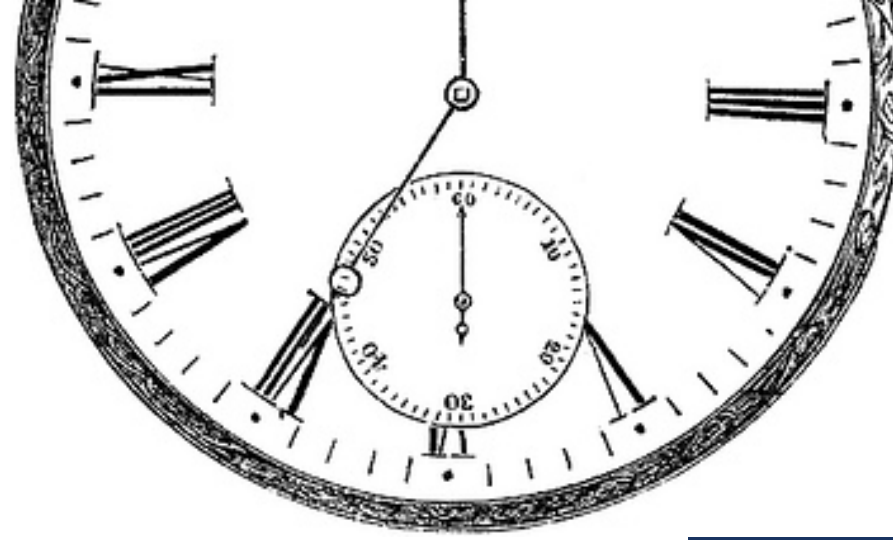
This is what we will do to make an impact...to fill the gap



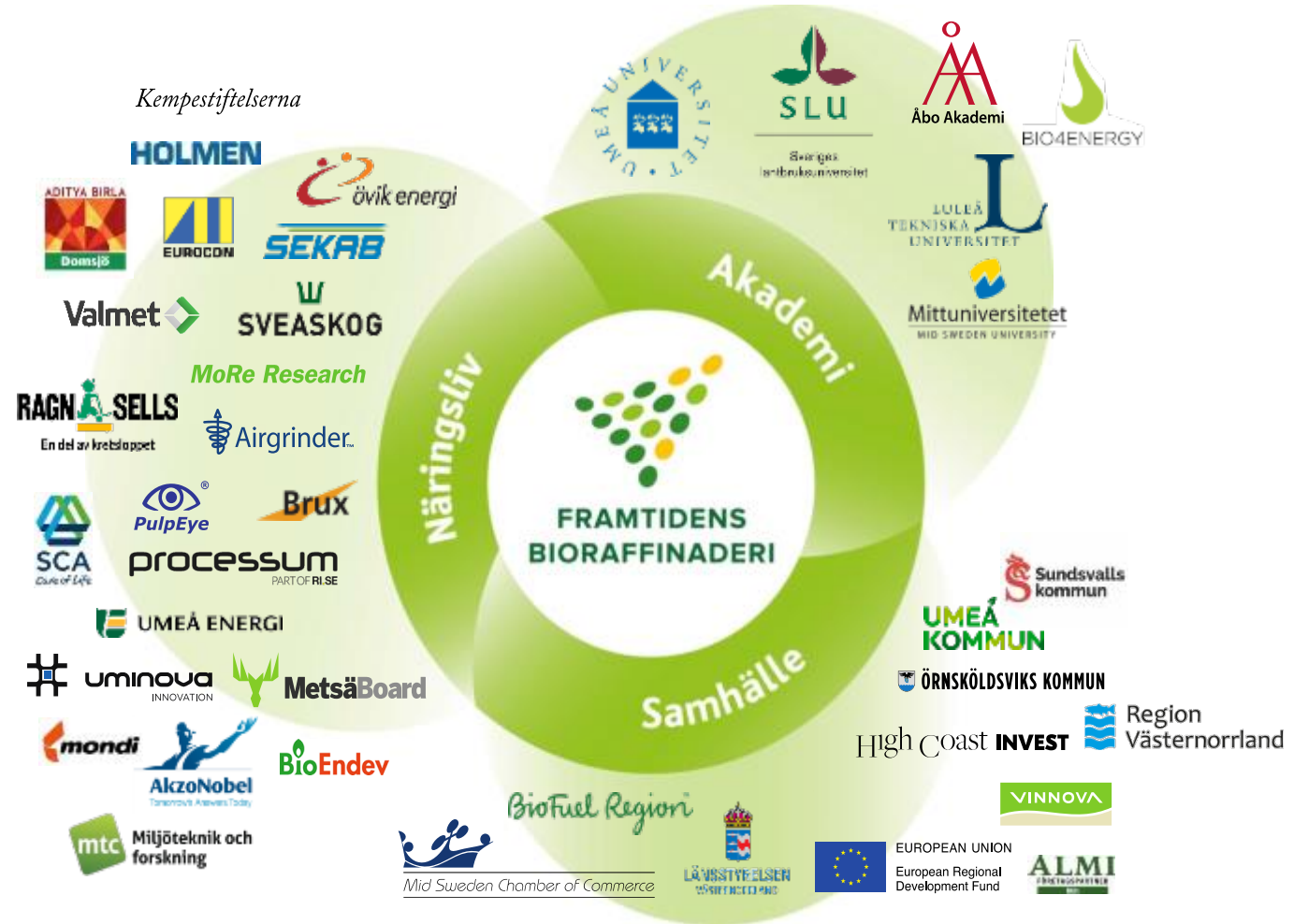
# The time is ticking

We need to speed up, but there is a gap between;

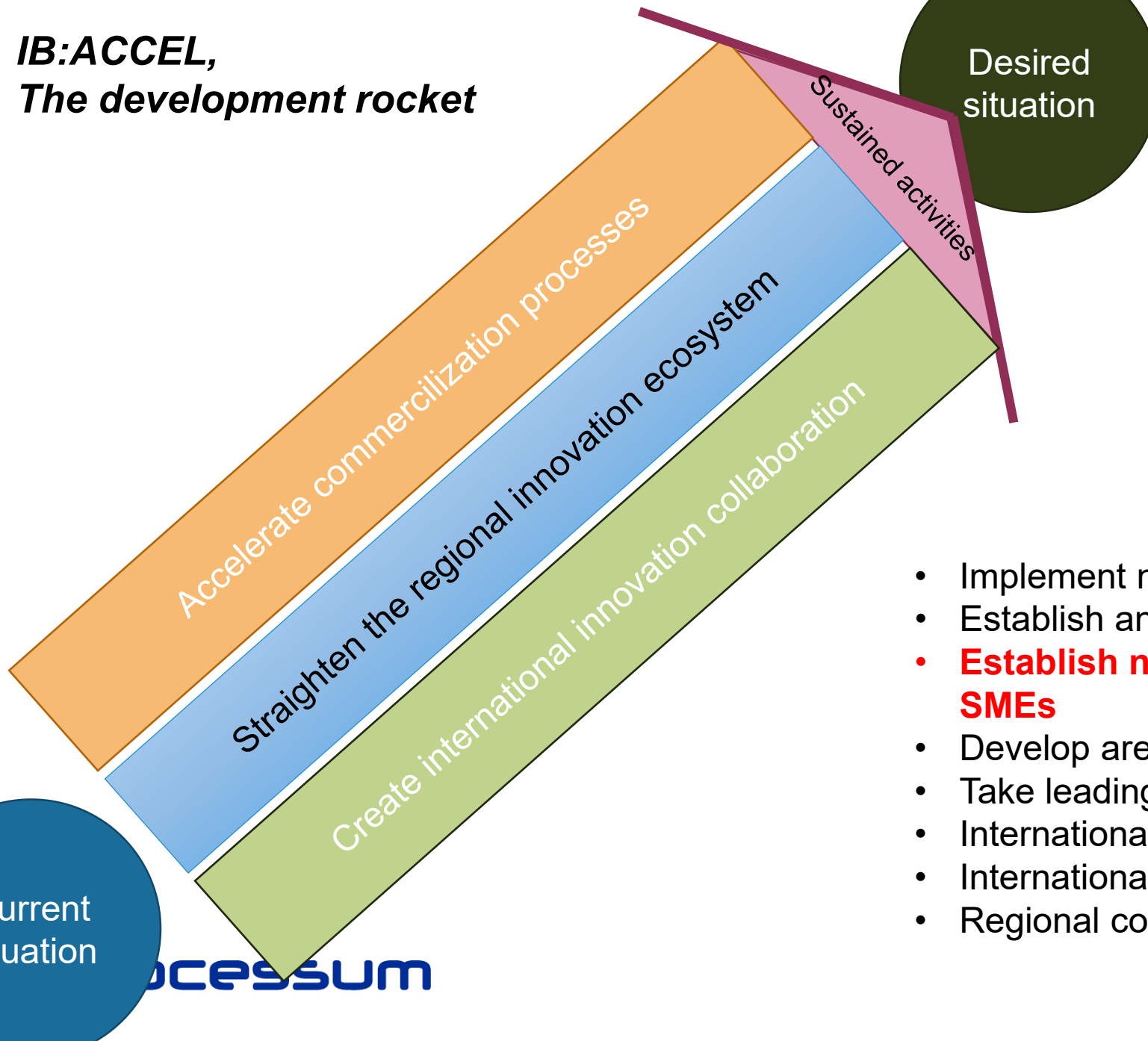
- R&D and commercialization
- Technology development and business development
- Entrepreneurial start-ups and large-scale industry
- Regional development and international markets.



# We have a leading biorefinery cluster



**IB:ACCEL,  
The development rocket**



***Accelerated innovation,  
Increased impact***

- Implement new working processes
- Establish an innovation council
- **Establish new forms for collaboration with SMEs**
- Develop arenas for meetings and collaboration
- Take leading roles in international projects
- International presence and marketing
- International visits
- Regional coordination of innovation efforts

# SME Node

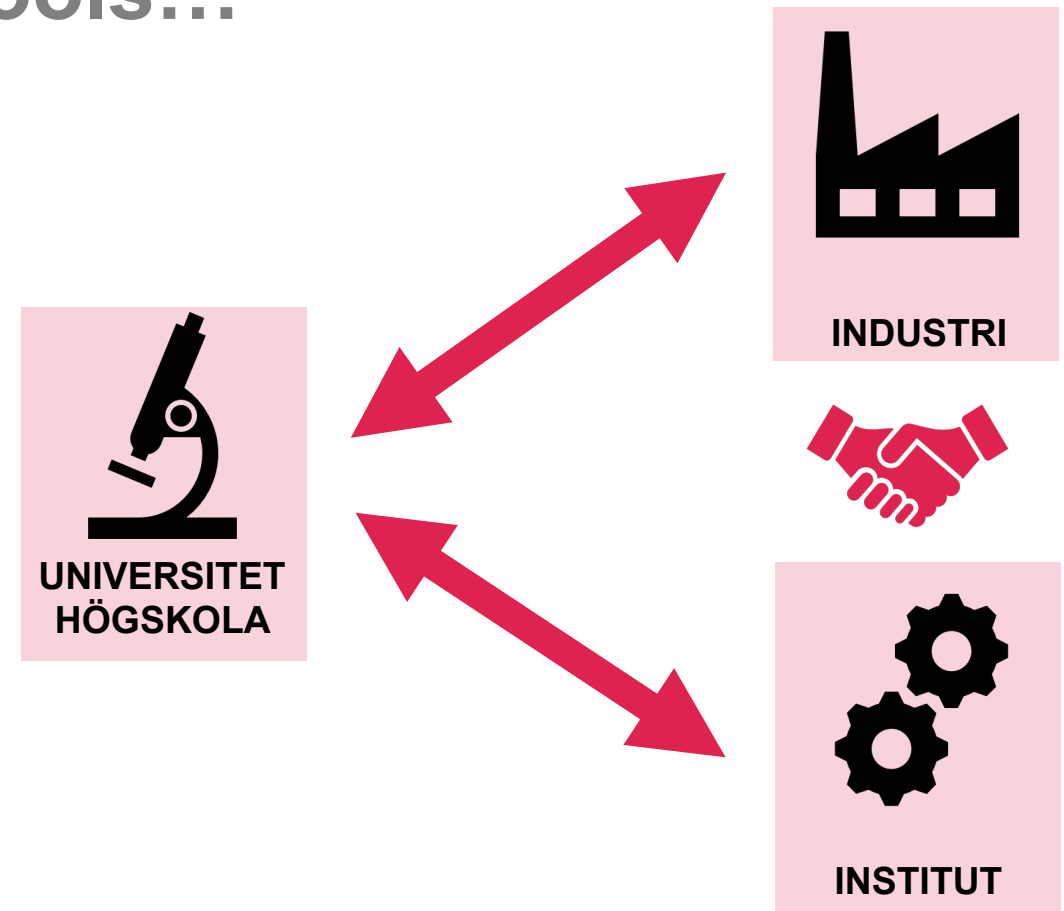
- SME Node that actively works with finding small companies and startups that have products and or innovations that are relevant to the innovation platform. Consulting and referencing to partnerships within the innovation platform are common practice.



[CC BY-SA-NC](#)

# Finding SMEs and work with tools...

- We involve SMEs in demand-driven, rapid R&D collaboration activities.
- We are active with finding the correct partner for SMEs in need of technical verification, financing, certification or other services crucial for commercialisation of new processes and products.



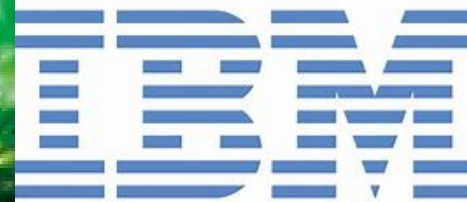
# Forest Business Accelerator

**processum**  
PART OF RI.SE



- Collaboration with regional incubators as well as national support actors to help SMEs with business development and customer identification.

**BIZMAKER**



**processum**

PART OF **RI.SE**



# International SME

- How does your cluster work with SMEs?
- How can your SME find RISE Processum?





Yvonne Söderström Nordin

[yvonne.soderstrom@processum.se](mailto:yvonne.soderstrom@processum.se)

+46 10 516 67 65

# Tack!

