



ADIGIDM
Maramureș

REDUCES
Interreg Europe



European Union
European Regional
Development Fund

Local approaches for collecting, sorting and recycling

Sandu Hotima

Executive Director of the Association of Inter-Community Development for the Integrated Management of the Household Waste in the county of Maramures

Local approaches for collecting, sorting and recycling

Intercommunity Development Association for Integrated Household Waste Management in Maramureş County (ADIGIDM)

- **76 territorial administrative units (cities and communes) of Maramureş county**
- **Maramureş County Council**

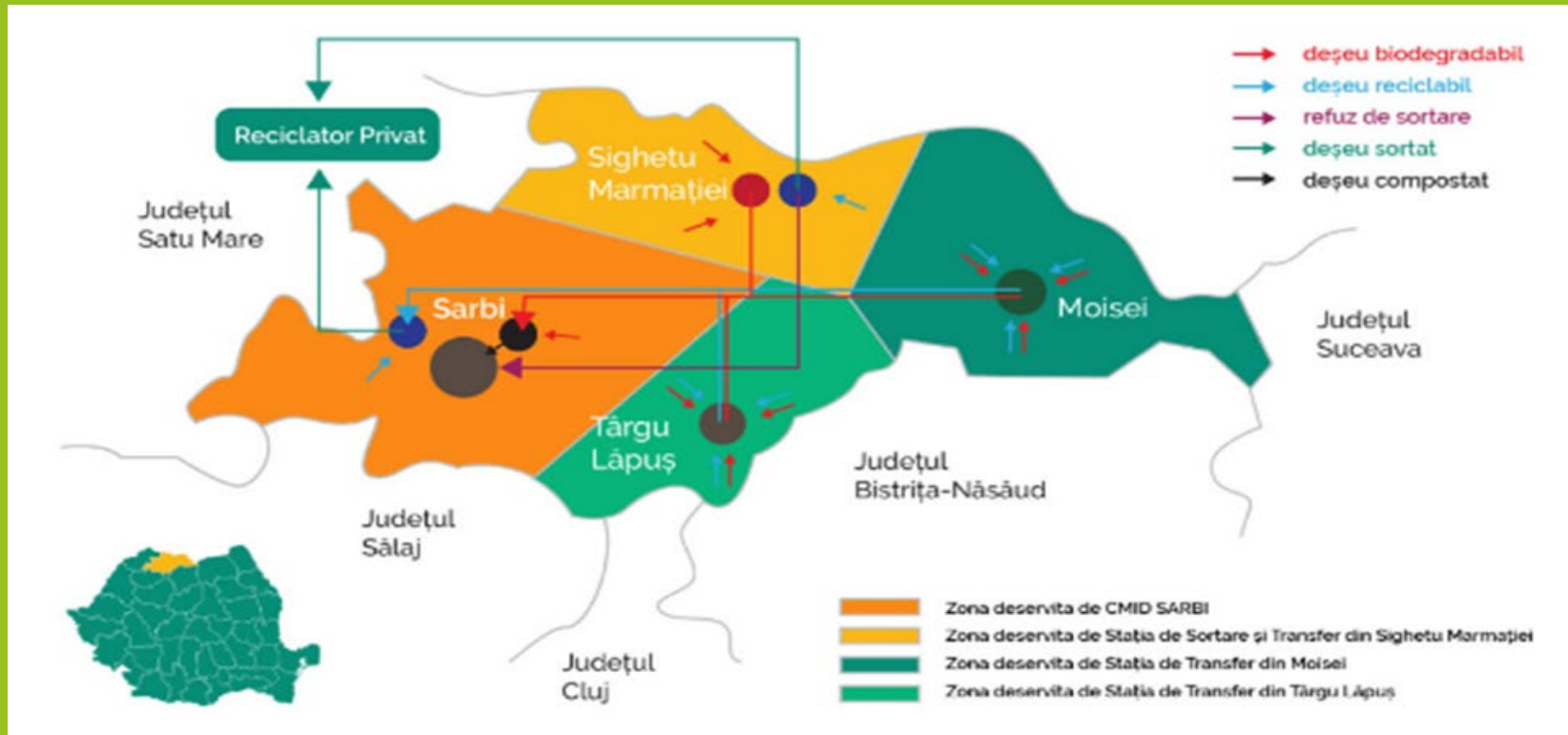
PURPOSE - Construction and Management of SMID (Integrated Waste Management System)

KEY ROLE - in promoting Circular Economy in Maramures County

OUR VISION FUNCTIONAL - GREEN - EFFICIENT - DURABLE

Local approaches for collecting, sorting and recycling

Architecture of the SMID - Maramures



Local approaches for collecting, sorting and recycling

6 STEPS FOR CREATING A FUNCTIONAL AND EFFICIENT WASTE MANAGEMENT SYSTEM

- Step 1. Creating the infrastructure – (2015 – to present)
- Step 2. Identification of waste collection operators (2017-2019)
- Step 3. Recipients Distribution (2019- 2020)
- Step 4. Launch of selective collection (1th of December 2019)
- Step 5. Setting up - Extended Producer Responsibility (EPR)
(During 2019- 2020)
- Step 6. Launch the campaign to stimulate composting at source
(summer 2020)



Local approaches for collecting, sorting and recycling

YEAR 2020 – THE YEAR of ACTION

EPR implementation and Composting

A difficult year for the world, but a good one for CE – in Maramures

THE RESULTS FACED UP

Local approaches for collecting, sorting and recycling

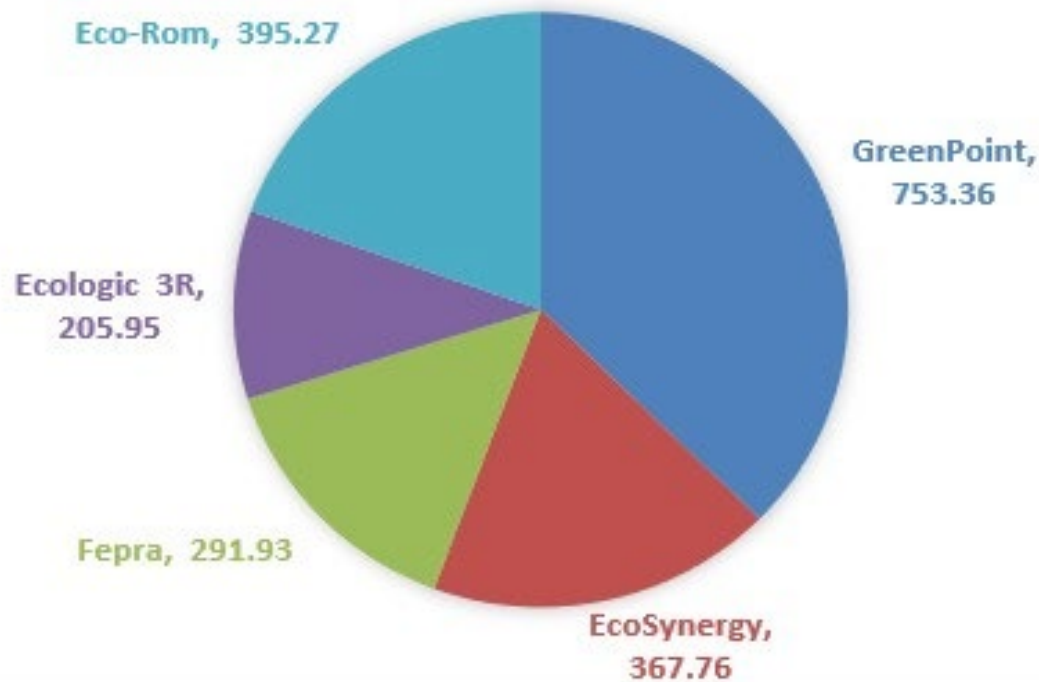
Basic Principle of EPR (Extended Producer Responsibility)

The basic principle for EPR is the same in most countries:

- **The producer or importer already pays a fee for the disposal of their goods' packaging when they are introduced on the market**
- **The fee is used for collecting, recycling and disposing the respective wastes**
- **There are exceptions that partially apply to some packaging materials (e.g. industrial or transport packaging) that is immediately taken back by the supplier**

Local approaches for collecting, sorting and recycling

DISTRIBUTION OF QUANTITIES ON THE 5 EPR PARTNERS



Local approaches for collecting, sorting and recycling



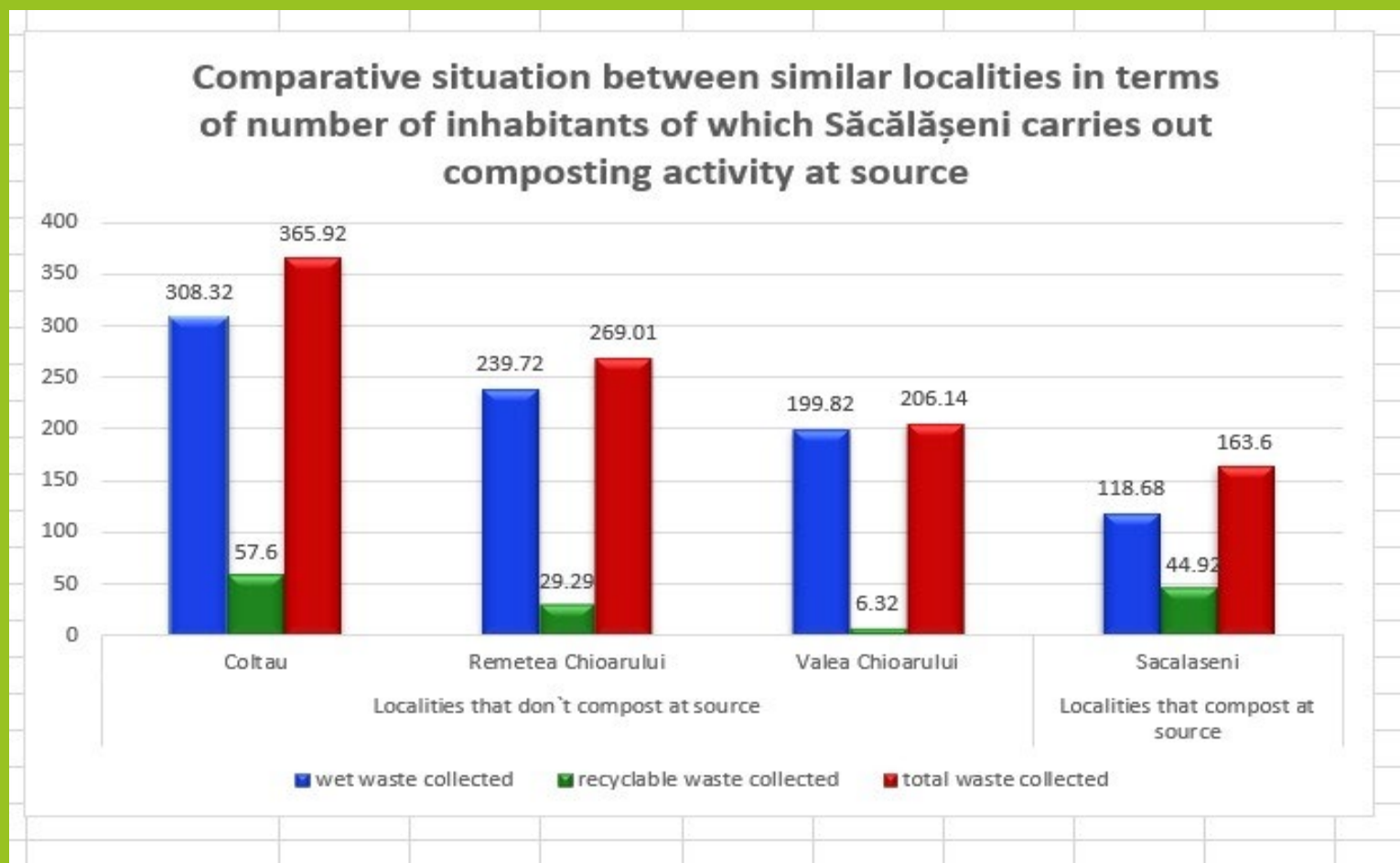
Local approaches for collecting, sorting and recycling

Composting

A form of waste disposal where organic waste decomposes naturally under oxygen-rich conditions

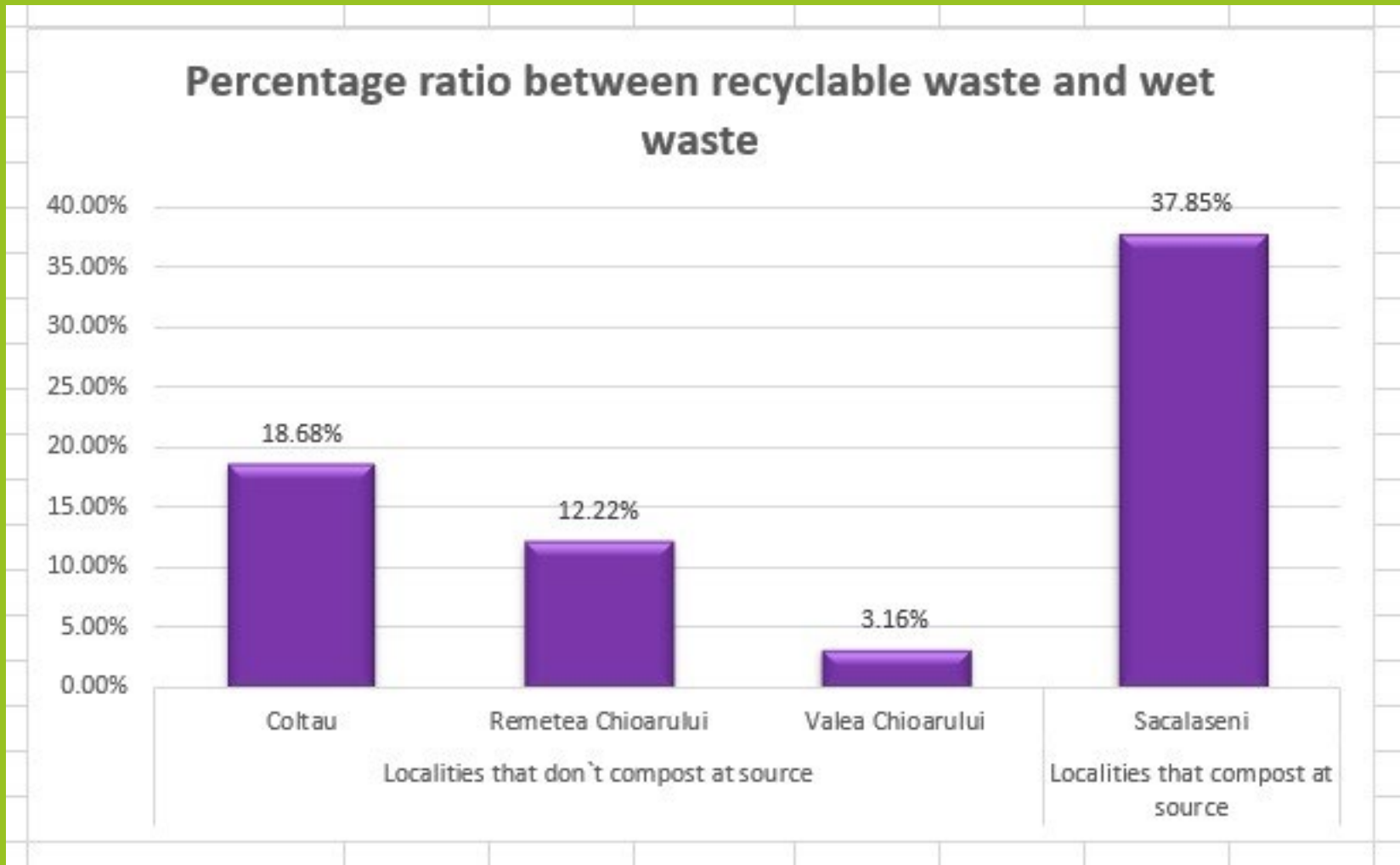


Local approaches for collecting, sorting and recycling

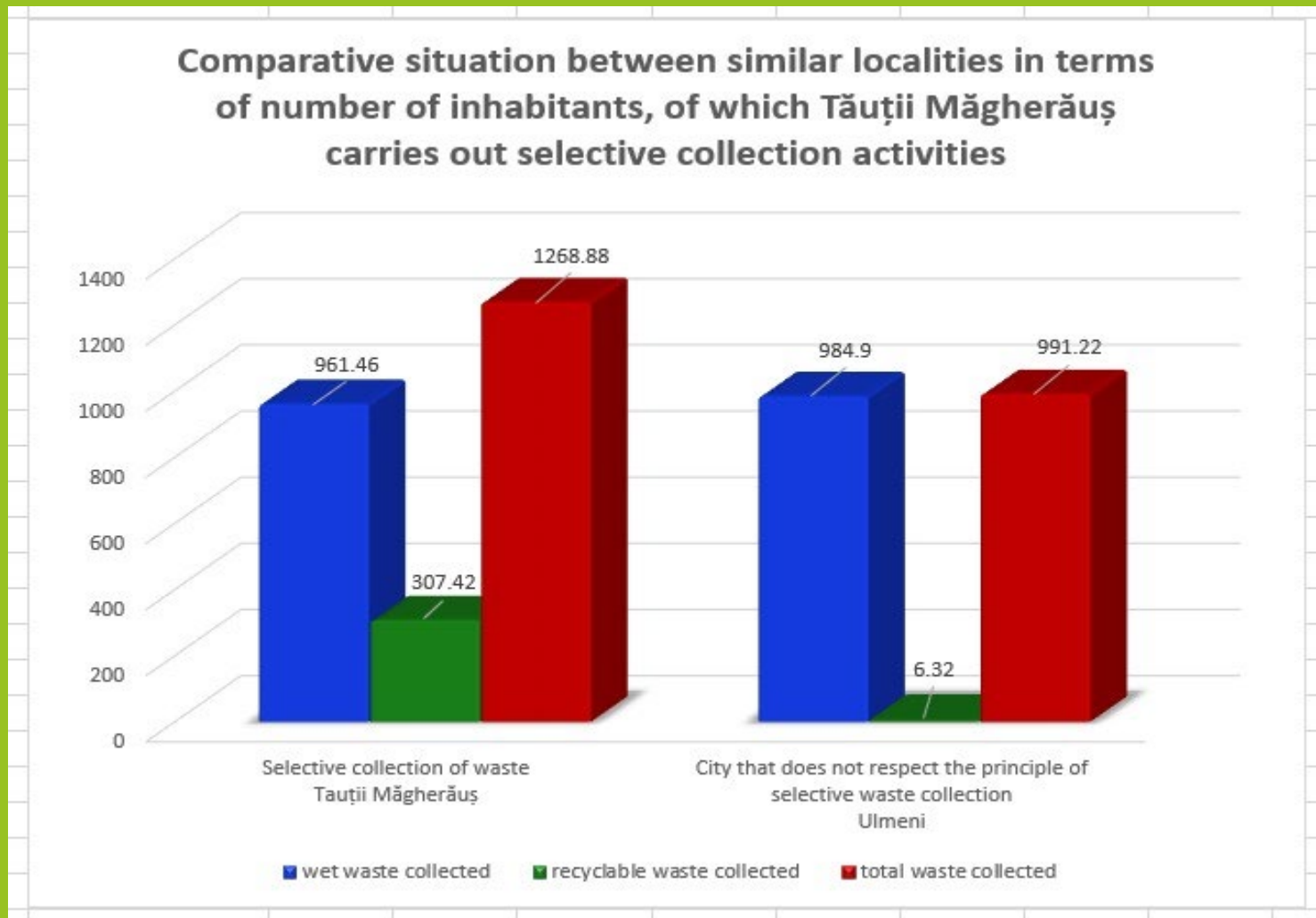


!!! FROM 30 Tones/Mounth to 7 Tones/Mounth - Total Wet Fraction

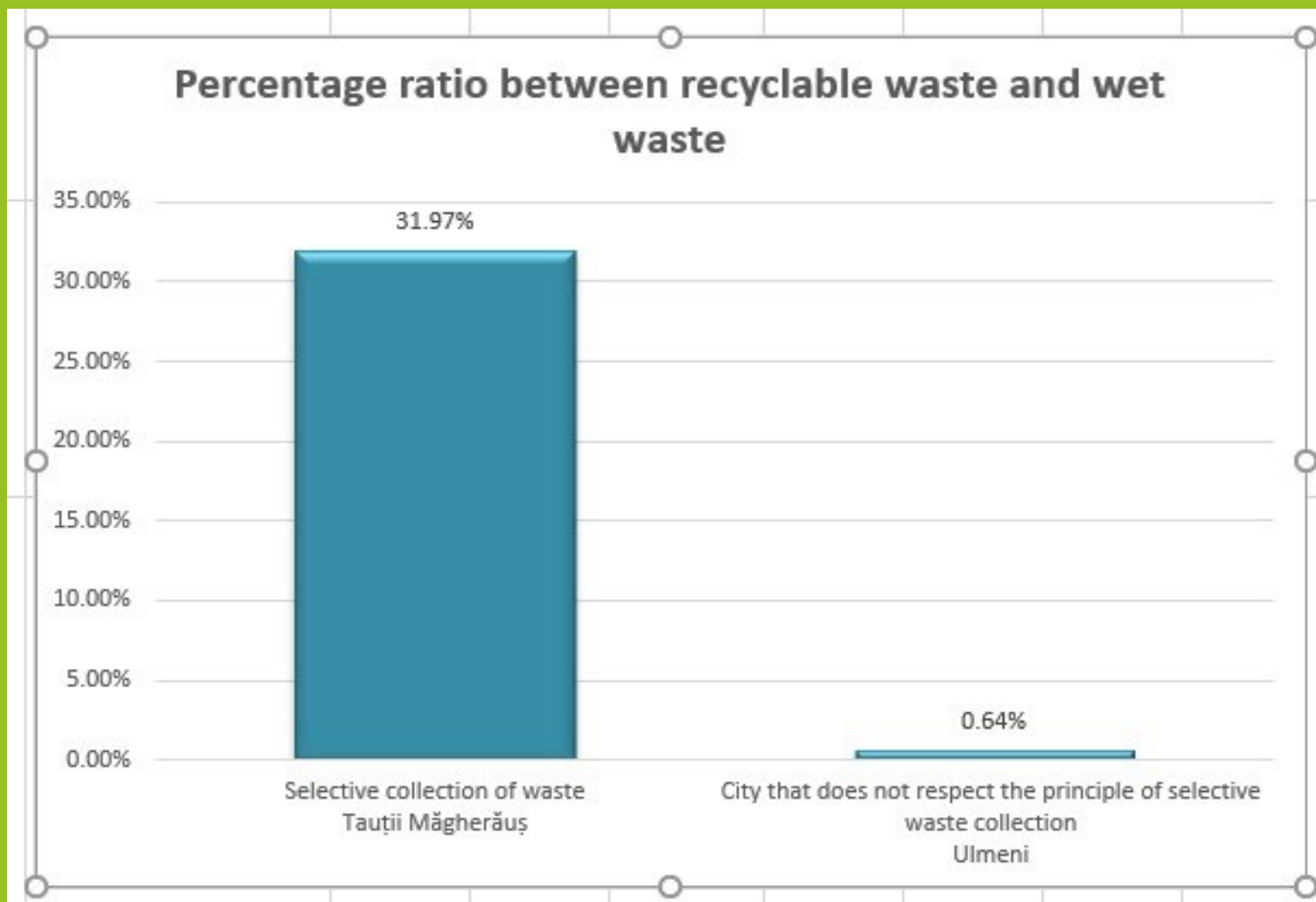
Local approaches for collecting, sorting and recycling



Local approaches for collecting, sorting and recycling

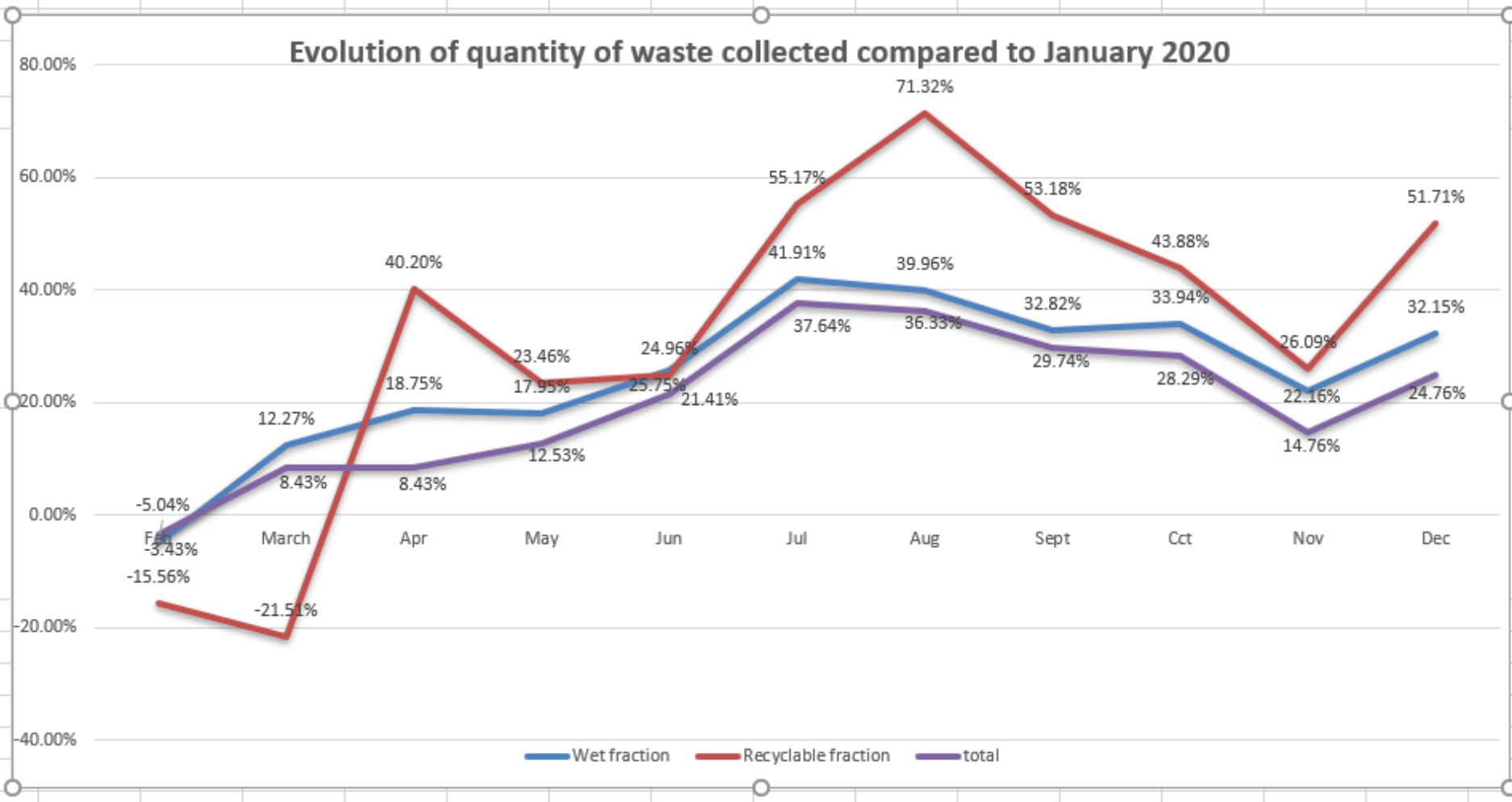


Local approaches for collecting, sorting and recycling



Local approaches for collecting, sorting and recycling

Evolution of quantity of waste collected compared to January 2020



Local approaches for collecting, sorting and recycling



Local approaches for collecting, sorting and recycling

Conclusions

- Maramures County is at the beginning of the road, nevertheless has encouraging results
- Focusing on composting at source can be a solution for significantly reducing the total amount of waste, but also for increasing the compliant recyclable fraction.
- The relationship with EPRs is very dynamic and has begun to be seen by communities as a very serious lever for reducing costs with waste management.
- The population is becoming more involved and more aware of the ecological but also economic value of a high-performance waste management, and especially of the need to reduce the amount generated by any methods.

Local approaches for collecting, sorting and recycling

THANK YOU !

