



Green Energy in the City: are we there yet?

Agnė Daukšienė

Head of Strategic Development Department

Member of Supervisory Board at Ignitis Latvia SIA

Content

 **ignitis** | saulės parkai



Virtual prosumers
model
empowerment

EVs charging
stations
network



 **ignitis** | on

New
initiatives



Expansion of
virtual prosumers
model

Ignitis Solar Parks platform at a glance

Founded in
2019

 **ignitis** | saulės parkai

>3,000
platform's users



20 projects

 ignitis
gamyba

 Egrupė

 SAULĖS
GRAŽA

 Solet
TECHNICS

 GREEN
GENIUS

Total capacity of
>10.5
MW



Ignitis gamyba project at Obeniai

Virtual prosumers model is unique in Lithuania



>13,000
prosumers in LT



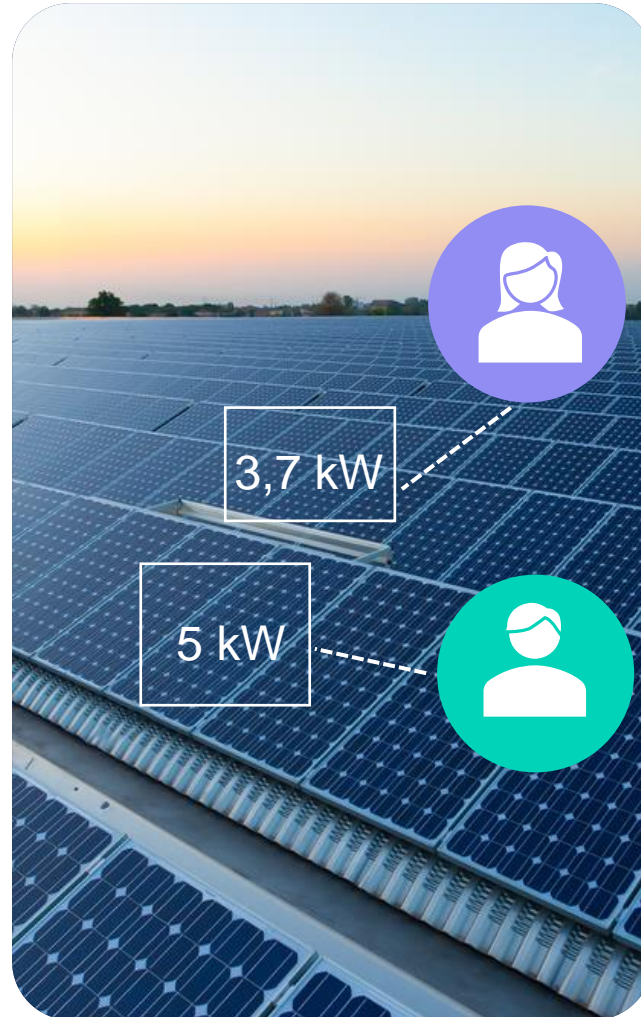
~30%
of prosumers are virtual



35%
Growth of prosumers
number in 2021



60%
Growth of virtual prosumers
number in 2021



Consumer could become virtual prosumer by signing buy-sell or rent agreement of equipment at remote solar park & installing smart metering device

Ignitis Solar Parks platform



Allows you to **buy/rent** a part of a remote solar power plant online



Solar energy for **everyone**: whether you live in a house, or an apartment



The world's first platform (operating on a national scale)



~17% impact on number of prosumers in Lithuania



The screenshot displays the Ignitis Solar Parks platform interface. At the top, there are navigation options: "ignitis saulės parkai", "For customers", and "For developers". Below this, there are two main sections: "All projects" and "Purchase".

The "All projects" section features four project cards:

- Vytis II Solar Park**: Developer: Solet Technics. Location: Panevezys d. sav., Naujamiestis sen., Berčiūnų village, Nevėžio str. Purchase price: 989.01 €/kW. Annual maintenance cost: € 19.99 / kW. Progress: 152.2 kW (30.44%) / 500.0 kW Total project power.
- Bukta solar park**: Developer: Egrupė. Location: Buktos village, Lazdijai sen., Lazdijai district. Purchase price: € 995.00 / kW. Annual maintenance cost: € 17.50 / kW. Progress: 1,466.2 kW (91.68%) / 1,599.2 kW Total project power.
- Solar power plant in Obeniai Phase VIII**: Developer: ignitis parkai. Location: Elektrėnai district, Kietaviškių sen., Obeniai km., Obenių st. 41 b. Purchase price: 925.00 €/kW. Annual maintenance cost: € 19.99 / kW. Progress: 629.9 kW (100%) / 629.9 kW Total project power.
- ADVANCED Solar Return Solar Park**: Developer: SAULIŲ PŪRAJA. Location: Kuršėnai, Šiauliai district. sav. Purchase price: 925.00 €/kW. Annual maintenance cost: € 17.98 / kW. Progress: 490.0 kW (100%) / 490.0 kW Total project power.

The "Purchase" section shows two projects that are "SOLD OUT":

- Solar power plant in Obeniai Phase VIII**: Status: SOLD OUT.
- ADVANCED Solar Return Solar Park**: Status: SOLD OUT.

Until 2025 m. solar installed capacity shall grow 4X in Lithuania

Forecasted installed capacity in Lithuania by 2025

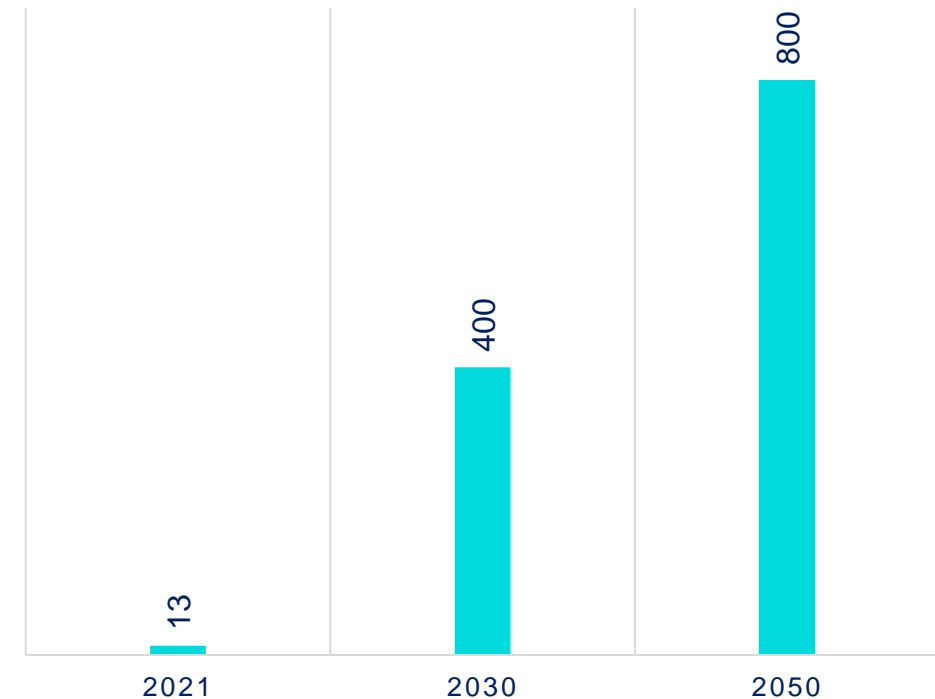


1 GW solar capacity



1.2 GW wind capacity

Prosumers number in Lithuania, in thousands, 2021-2050





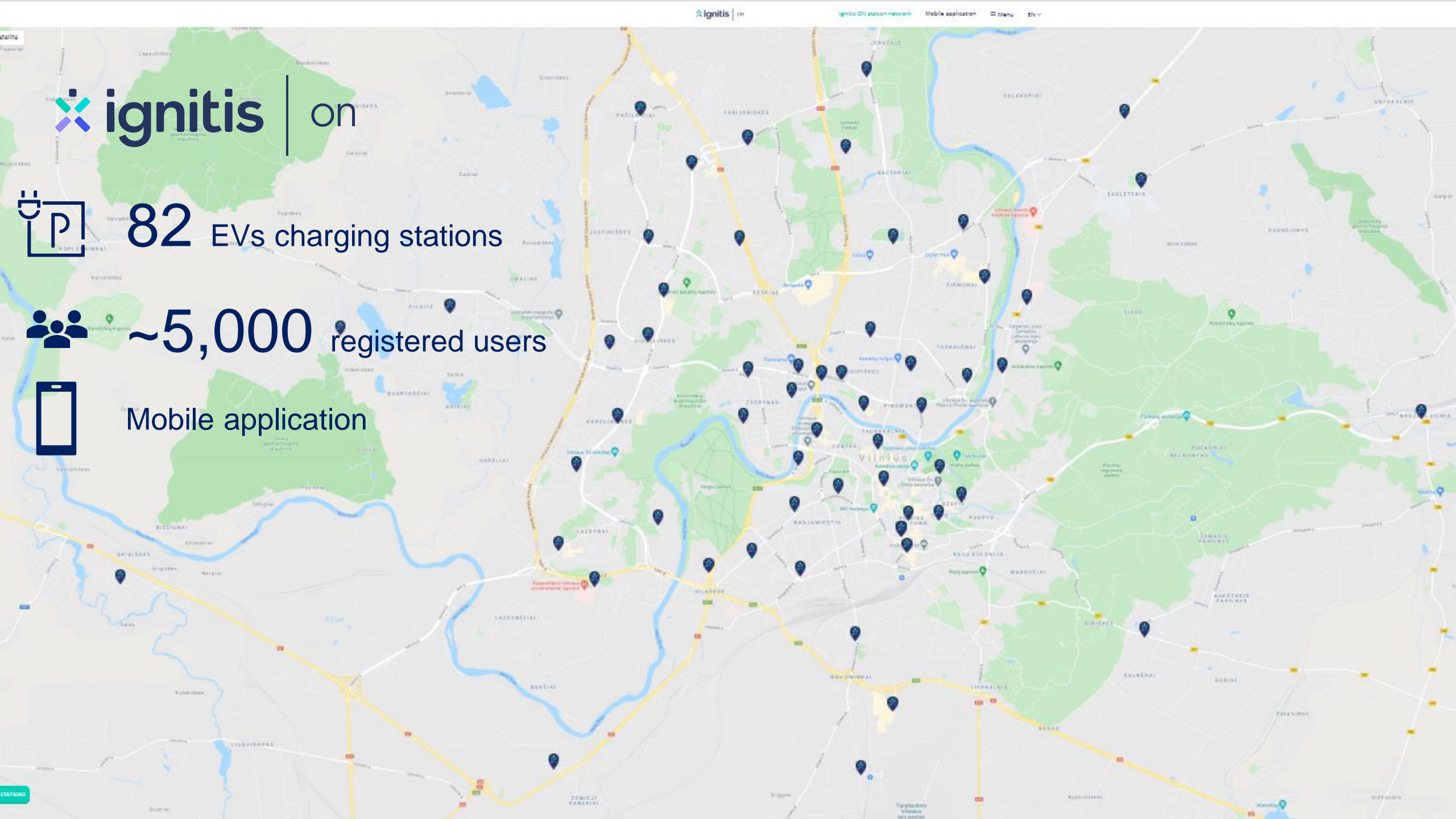
82 EVs charging stations



~5,000 registered users



Mobile application



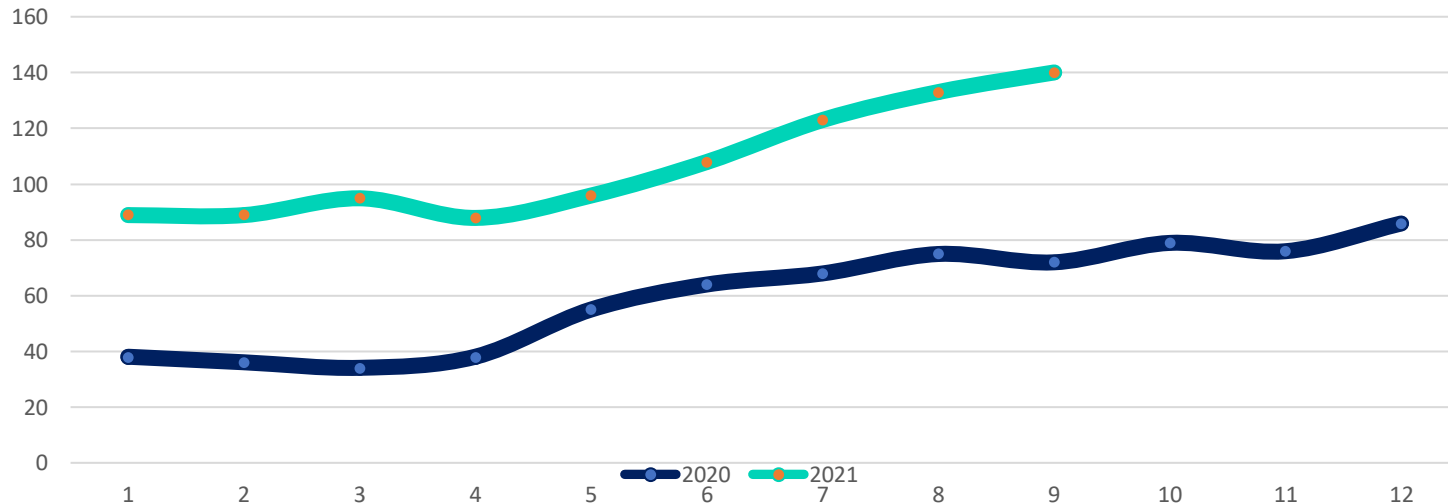
Ignitis On is going to double its network until the end of 2022

★ HESBURGER ★

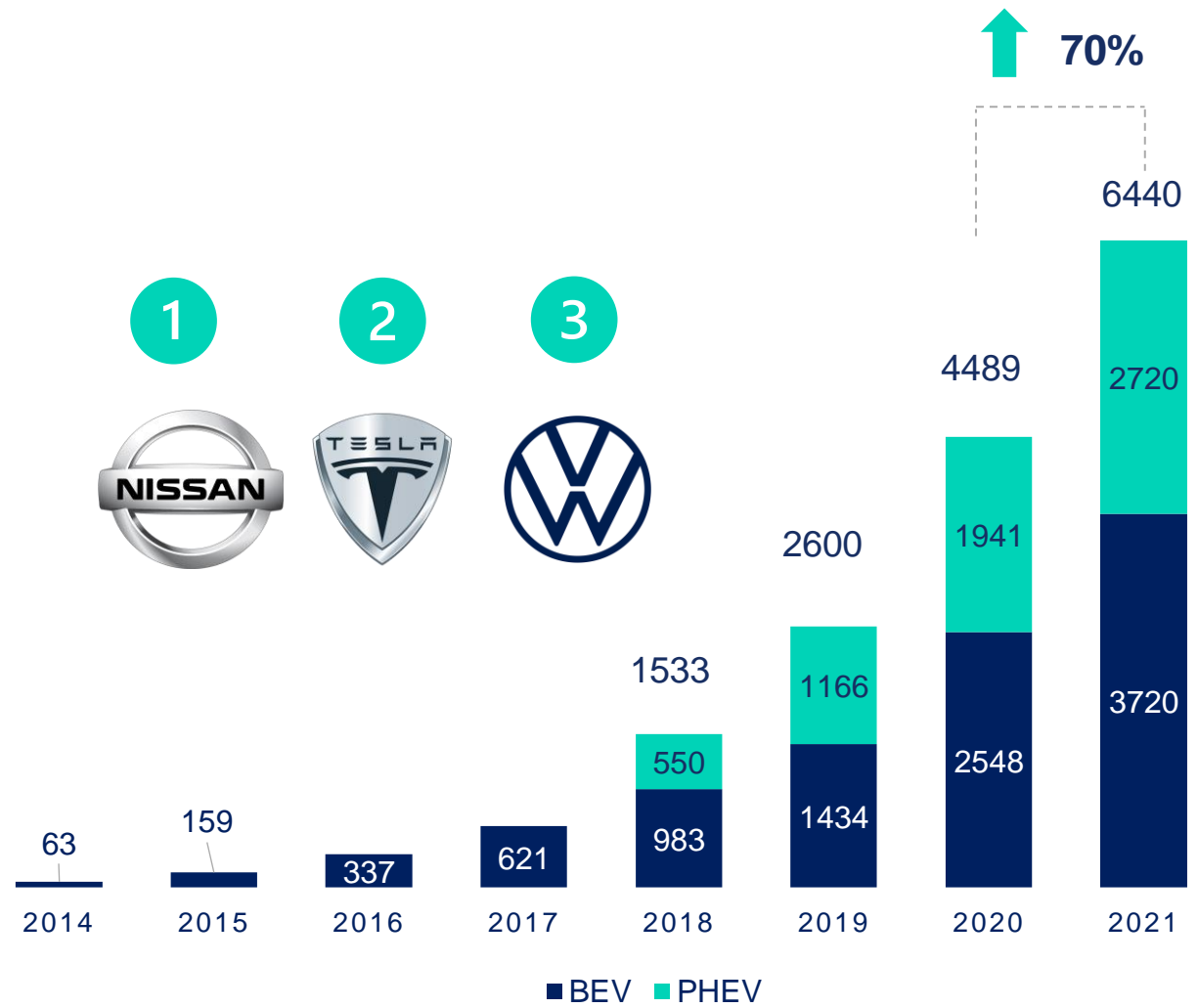
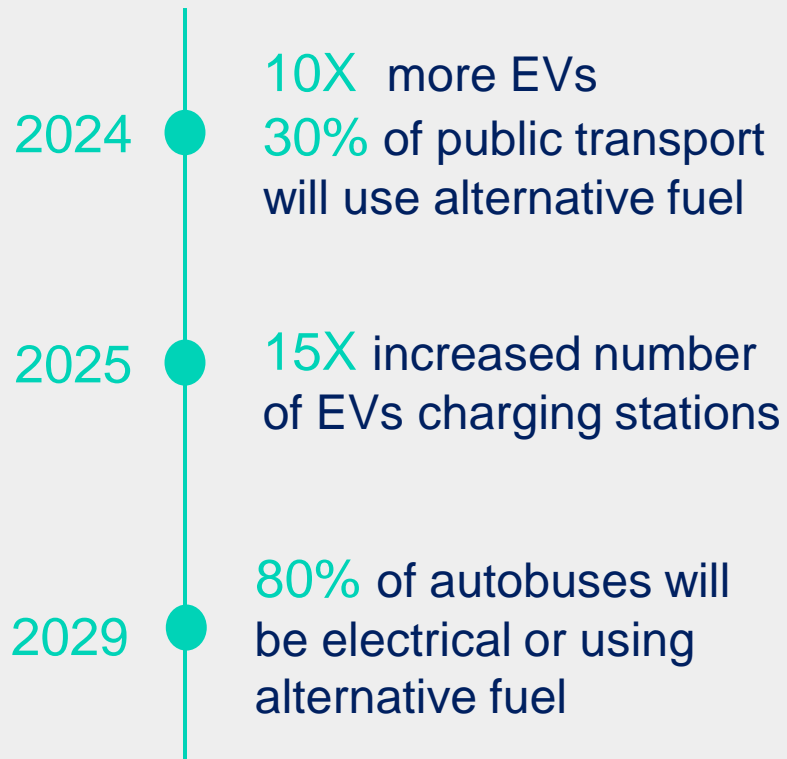
MAXIMA

+ 28 EVs charging stations in 2022

Amount of Charged Energy, MWh



It is seen a constant growth of EVs' number



Political framework & subsidies will be the main drivers for the EV market development



€70 m for infrastructure development up to 2027



Support schemes for acquisition of EV of €5,000



Alternative fuel law



Pollution tax from 2023



1.6 m cars are registered in Lithuania



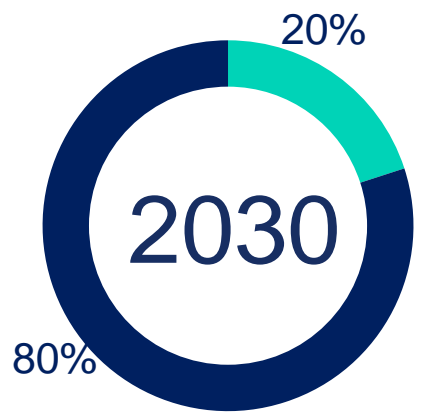
>1m cars are using diesel as a fuel



■ EVs ■ Fossil fuel cars



■ EVs ■ Fossil fuel cars



■ EVs ■ Fossil fuel cars

Virtual prosumers model is going to be applied to RES communities' (REScoops) model

1



Virtual prosumer becomes a member of RES community

2



Acquisition of parts of generation equipment

3



Capacity connection to the grid

4



Virtual prosumer will get electricity to his house



Wind generation will be accessible to households

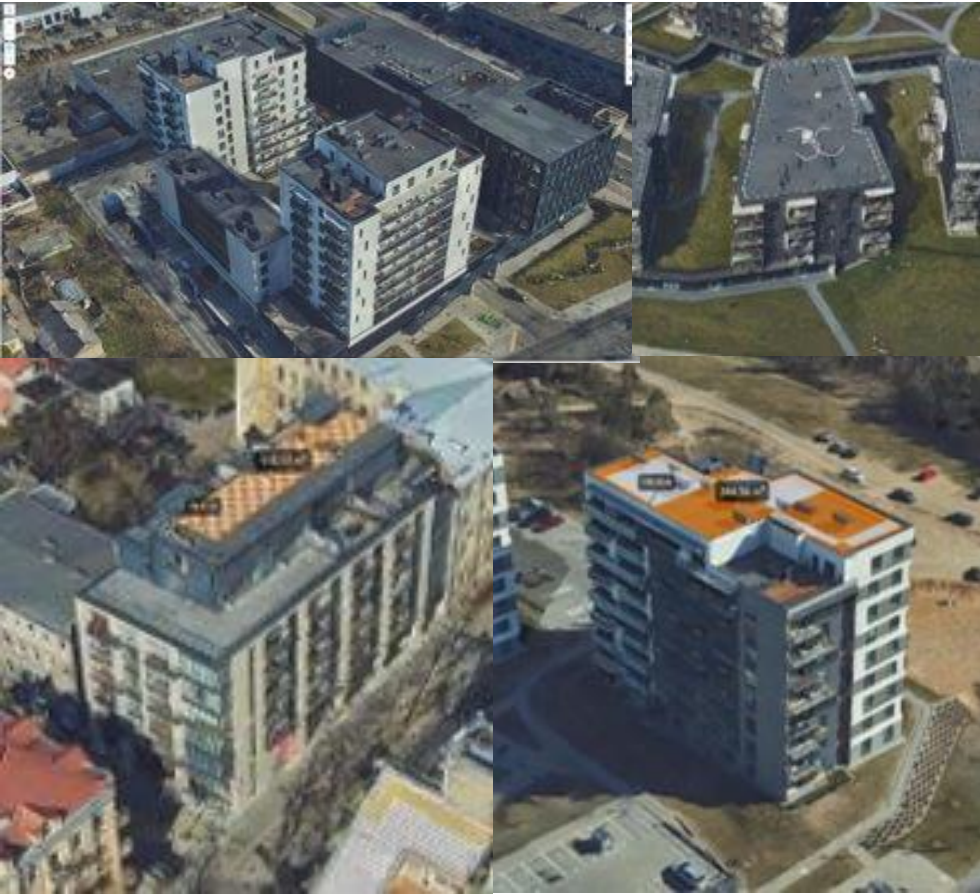


The municipalities could use model for supporting socially vulnerable persons



Social, economic & environmental returns

The usage of apartment buildings' roofs could have a significant impact on increase of prosumers' number



~17,000

Apartment houses are counted in the bigger cities

~86%

Of roofs of apartment buildings are suitable for the solar installations

272 MW

Of capacity could be installed on the roofs of apartment buildings

Virtual prosumers model could be applied

Highly difficult to implement projects due to regulation on common property

Additional values for prosumers could encourage to execute the projects

The key drivers for RES market development



Regulation

Paris agreement,
Green Deal targets,
National policy
measures



Subsidies

~ **€300 m** of
support will be
applicable in 5 years
perspective



Electricity prices

Increased more than
3X within a year
(wholesale price)



New products

Wind technology,
REScoops model,
products for
apartment buildings



Thank you

Agnė Daušienė

Email: agne.dauksiene@ignitis.lt

Tel. No.: +370 675 14334