



BIO4ECO
Interreg Europe



European Union
European Regional
Development Fund

Experiences on lessons from wood-based energy sector as a result of CoViD crisis impact

Ilze Silamiķele, MoA; Laura Ķeniņa, LFOA

Project partners Latvia – Ministry of Agriculture;

Latvian Forest Owners' Association

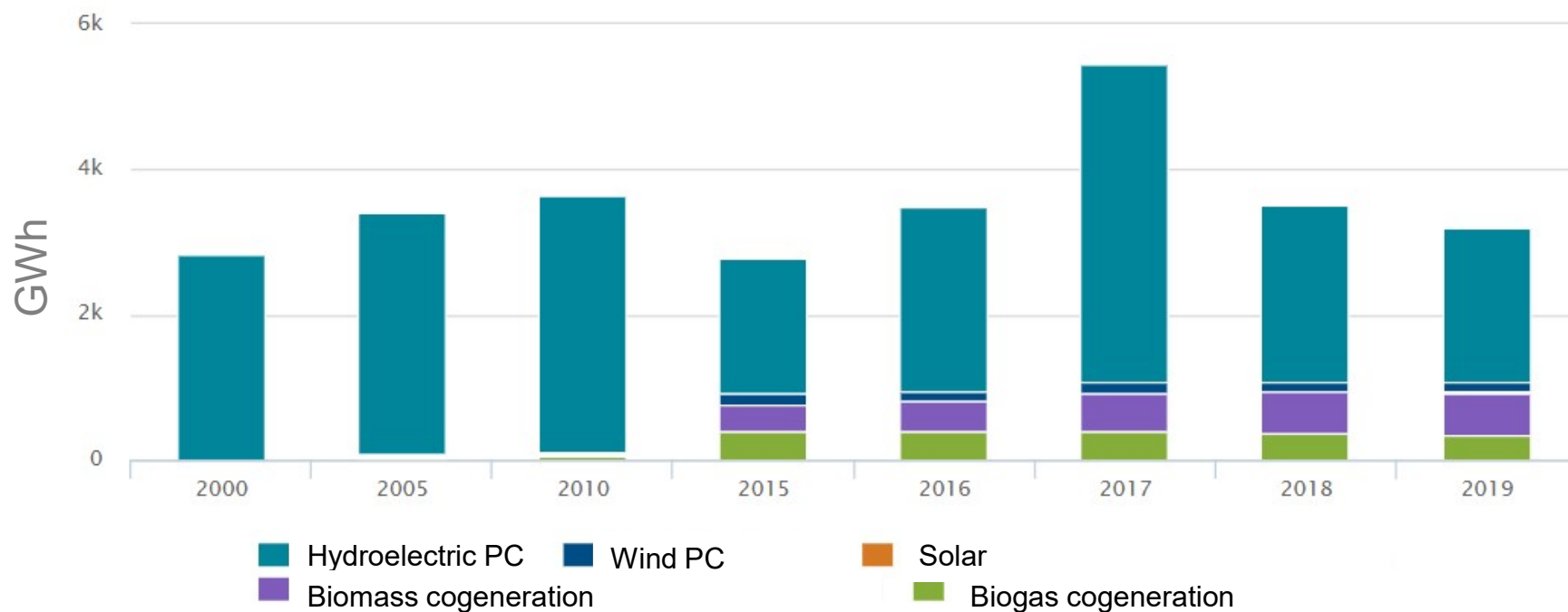
Ilze.Silamikele@zm.gov.lv ; Laura.Kenina@mezaipasnieki.lv

15 November 2021 | Webinar

Produced electricity from renewables, LV



**Total RES share – 39,01% 2020
target for 2022 – 40%**



Source: Central Statistical Bureau

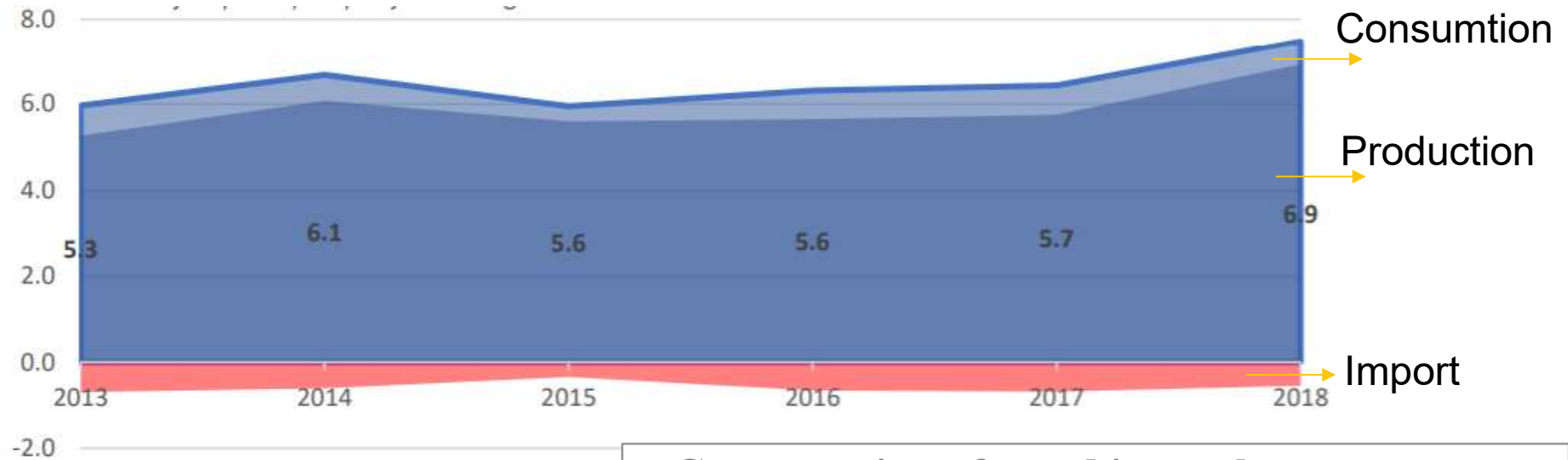


Zemkopības ministrija



Energy Wood production and consumption, LV

Energy wood production, import / export balance and available for local consumption volumes of energy wood, mln. m³

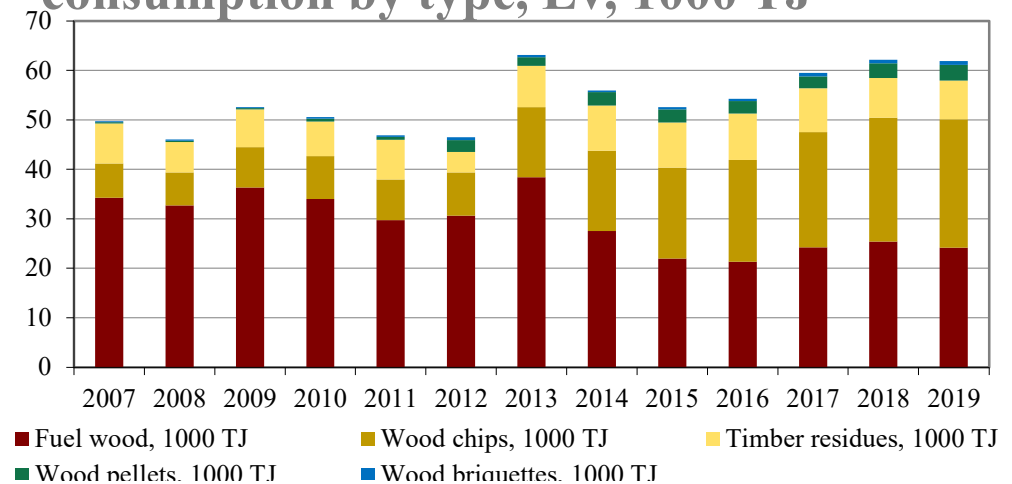


Source: Central Statistical Bureau, MeKA



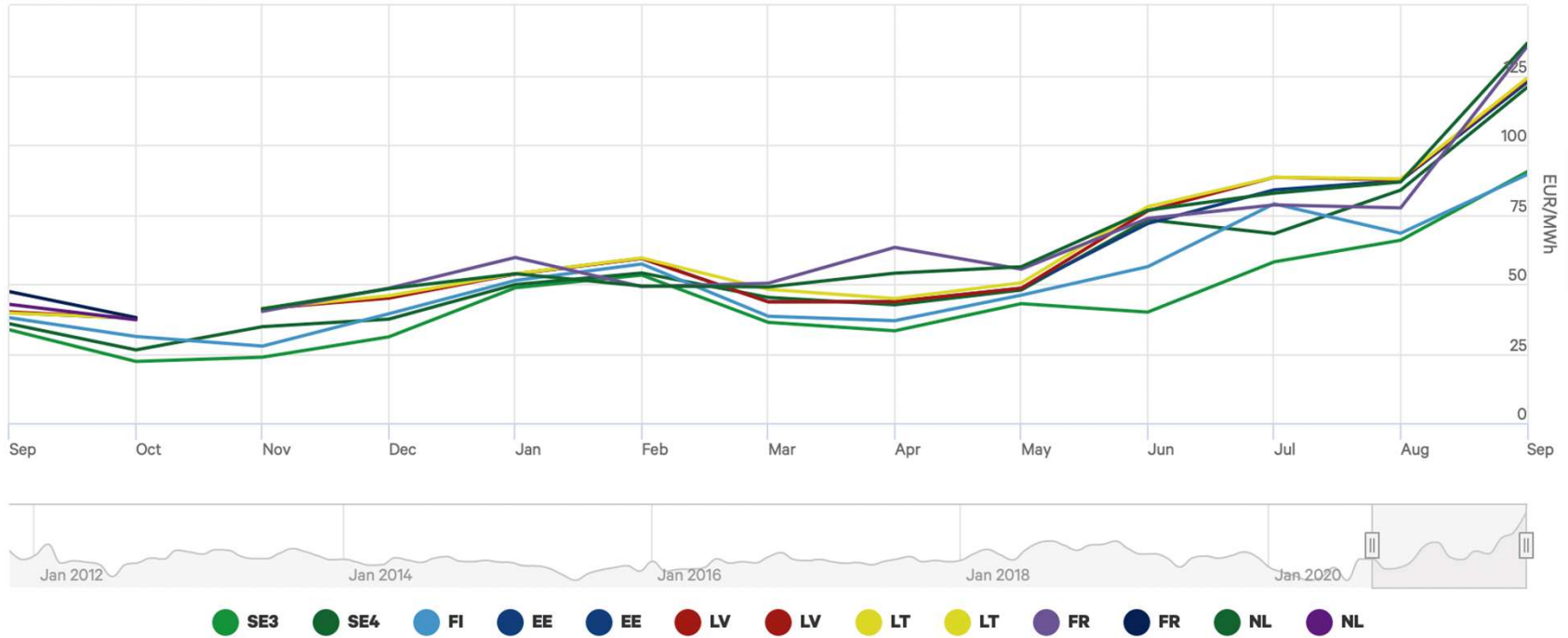
Zemkopības ministrija

Consumption of wood in total energy consumption by type, LV, 1000 TJ



Electricity Prices

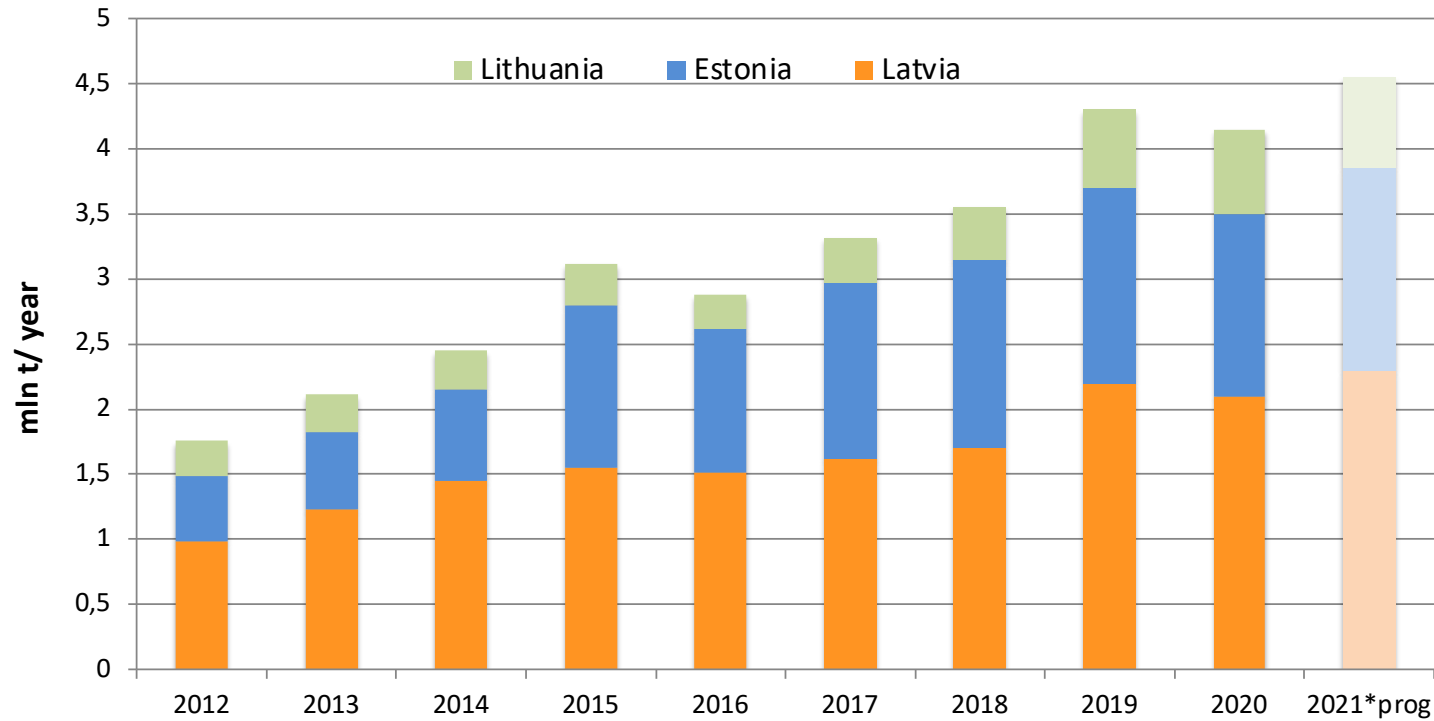
Interreg Europe



Source: Nord Pool



Pellet production in the Baltics



Source: LATbio

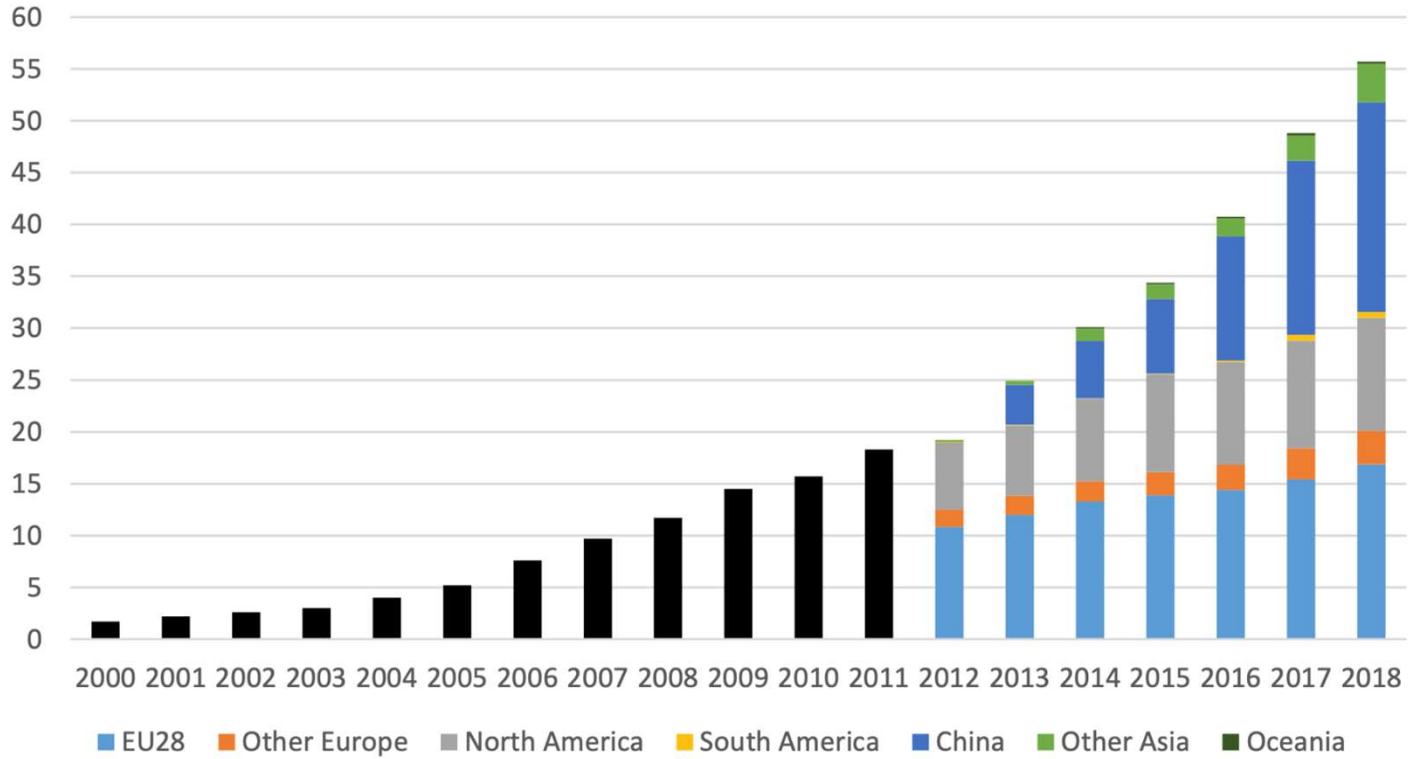


Scandbio



World pellet production

Interreg Europe

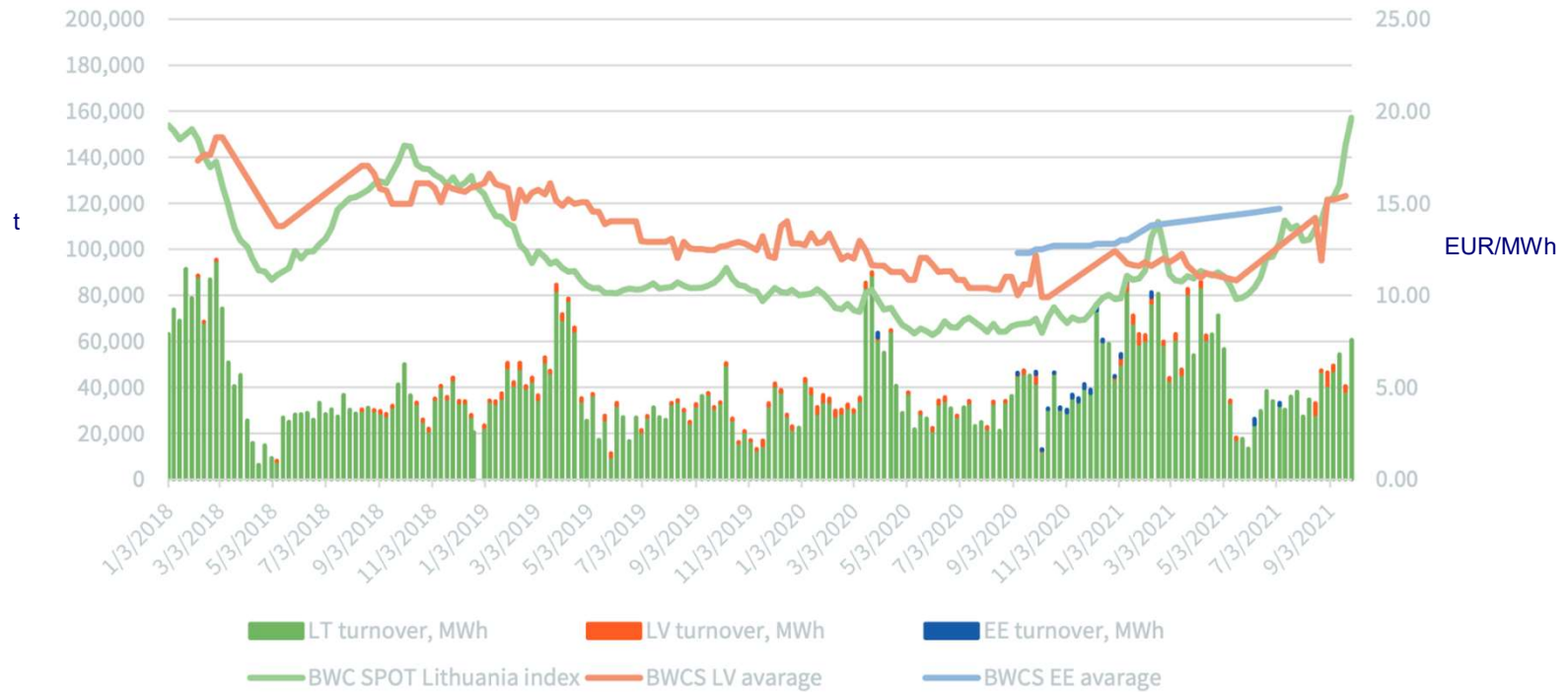


Source: Bioenergy Europe Pellet statistical report



Chip prices Baltics

Interreg Europe



Avots: Baltpool





BIO4ECO
Interreg Europe



European Union
European Regional
Development Fund

Thank you!

Questions welcome!

Source: Latvijas Biomasas Asociācija LATbio,
<http://latbio.lv/>

<http://www.mezaipasnieki.lv/>
<https://www.zm.gov.lv/>



Project smedia