



# **DIGITAL TWIN: MURALLA DE AVILA AND ESCUELAS MAYORES OF THE UNIVERSITY OF SALAMANCA**

***“Good practices of digitization of natural and Cultural Heritage as anti pandemic measures (Spain)”***

**Name: Diego Gonzalez-Aguilera**  
**Position: Full Professor, Engineering**  
**Institution: University of Salamanca, EPS Avila**

# OUTLINE

- ❑ TIDOP Research Unit
- ❑ What is a Digital Twin?
- ❑ Muralla de Avila-Digital Twin
- ❑ Escuelas Mayores-Digital Twin
- ❑ Conclusions



# OUR EXPERIENCE



**2005**

----

**2014**

**ITOS3D**  
IMAGE TO SMART 3D ENGINEERING



**60+**

More than 60  
employees and  
growing...  
Interdisciplinary



**10+**

Experts in the  
most advanced  
geospatial  
technologies



**15/35**

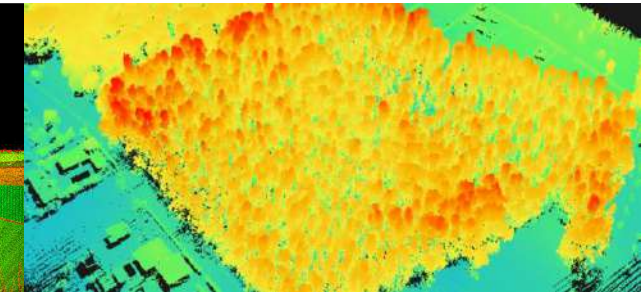
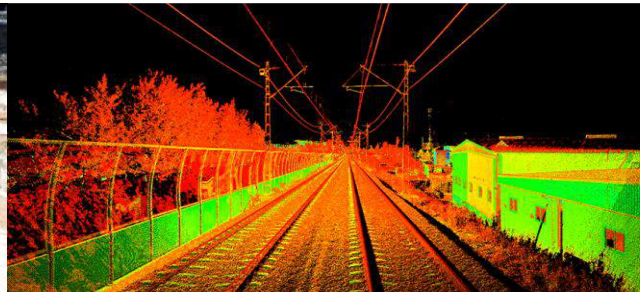
Patents and  
Intellectual  
Properties  
(Software)



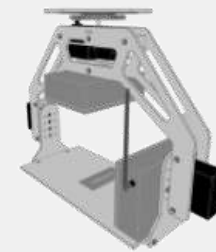
**300+**

More than 200  
projects/contracts  
behind us  
Different clients

# WHAT MAKES US DIFFERENT



## In-house software/patents



Geospatial analysis

Artificial Intelligence

Data acquisition



# OUR PRODUCTS

AUTOMOTIVE SECTOR



INDUSTRY 4.0



energy  
tools



hidrology



# WHAT IS A DIGITAL TWIN?

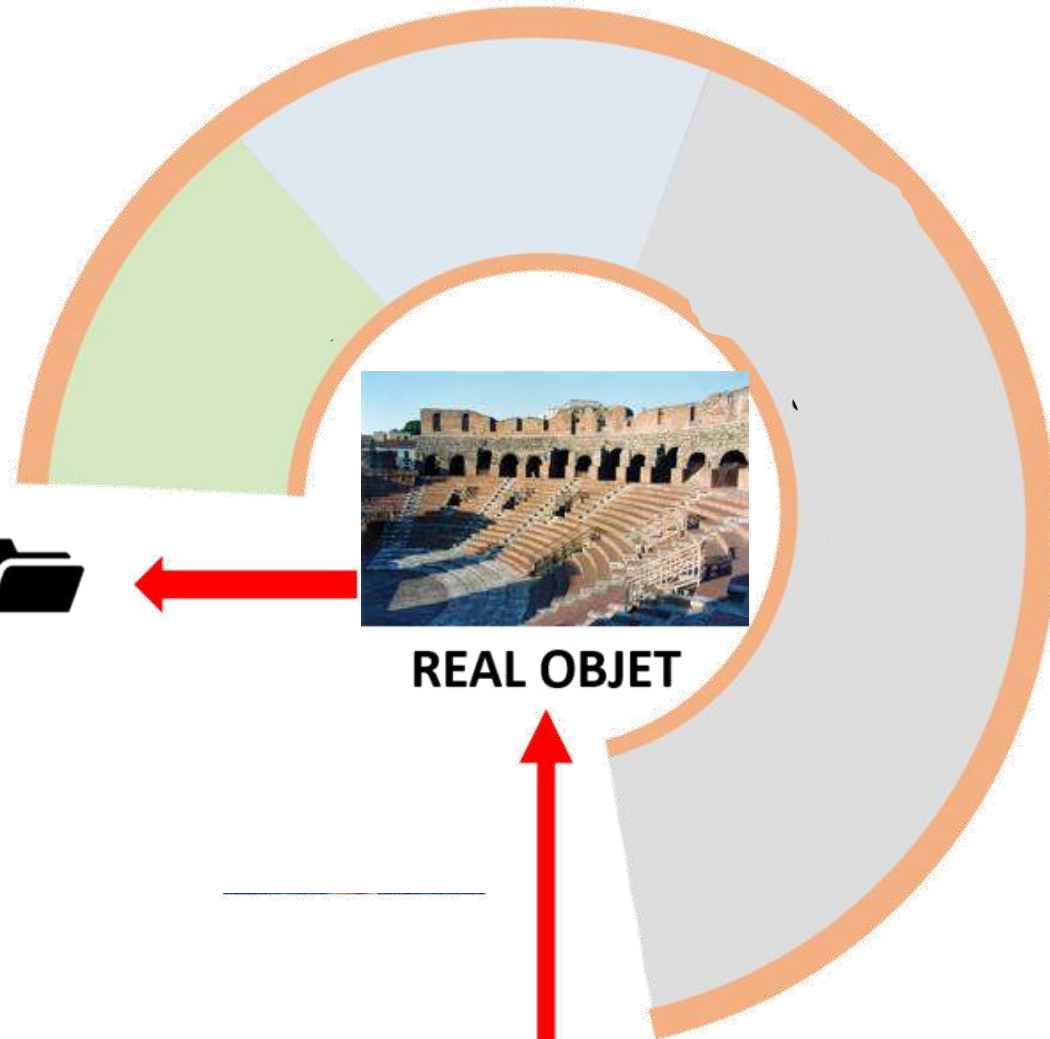
## DIGITAL TWIN



AVATAR



REAL OBJET



DIGITALIZATION



MONITORING



KNOWLEDGE

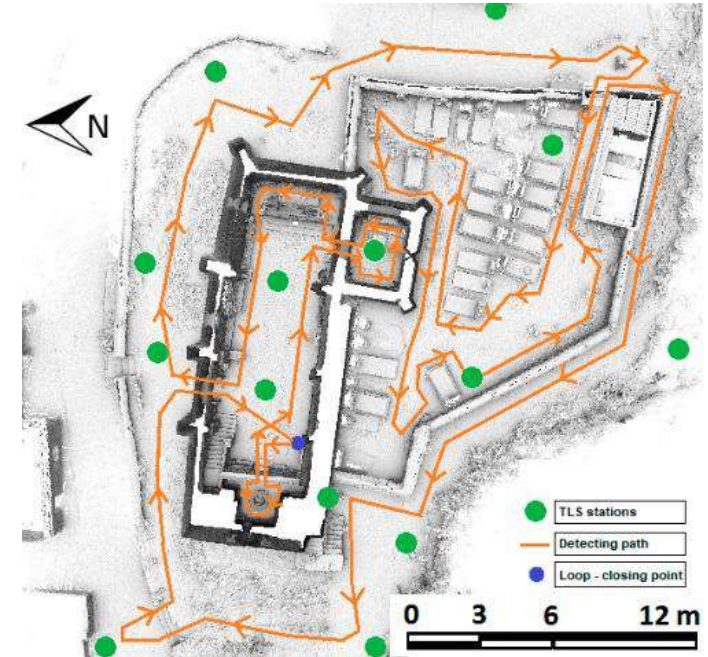


PREVENTIVE AND PREDICTIVE CAPABILITIES

# DIGITALIZING CULTURAL HERITAGE WITH WEARABLE TECHNOLOGIES



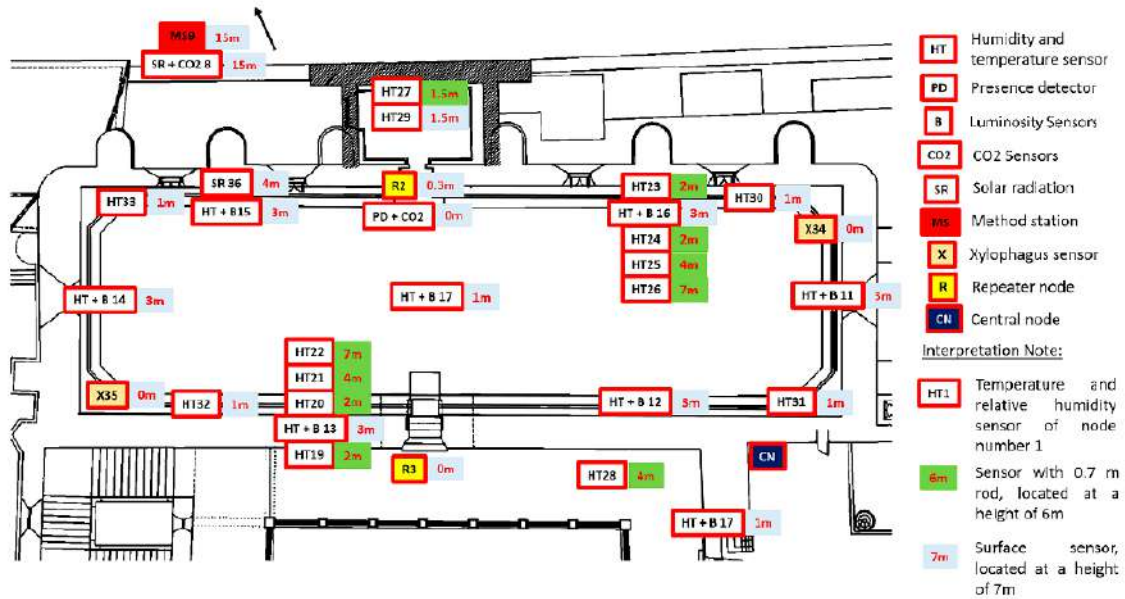
- ✓ Intuitive
- ✓ Low-Cost and easy to implement
- ✓ Metric properties (1-2 cm accuracy)
- ✓ More efficient than laser or photogrammetric techniques
- ✓ Ideal for complex Cultural Heritage scenarios



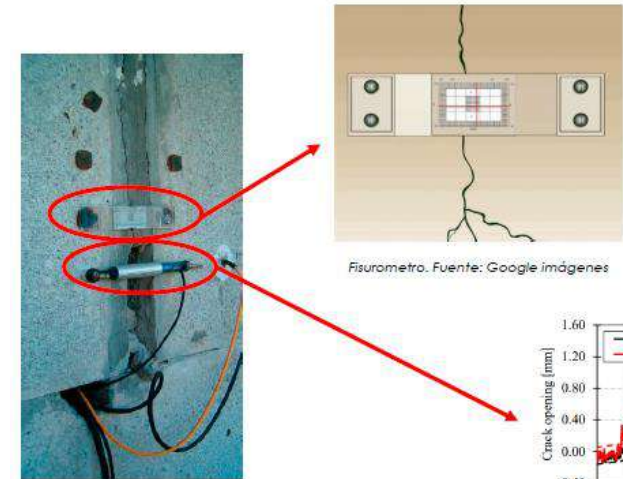
# MONITORING CULTURAL HERITAGE WITH IoT SENSORS



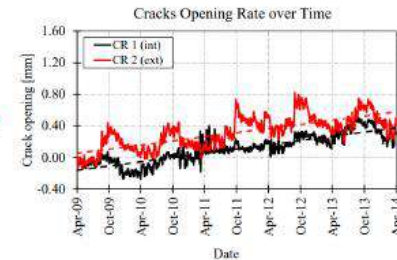
- ✓ Dynamic capabilities
- ✓ Low-Cost and easy to implement
- ✓ BigData performance and BigData analytics
- ✓ Great variability of sensors and parameters
- ✓ LoRaWAN network



- Moisture
- Temperature
- Luminosity
- Inclination
- Fissures
- Etc.



Fisrometro. Fuente: Google imágenes

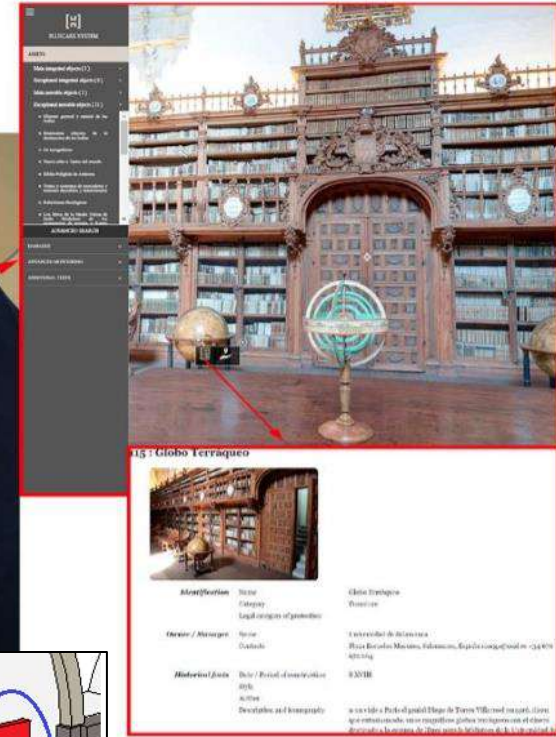


Fisrometro y LVDT. Fuente: Puliga, 2014





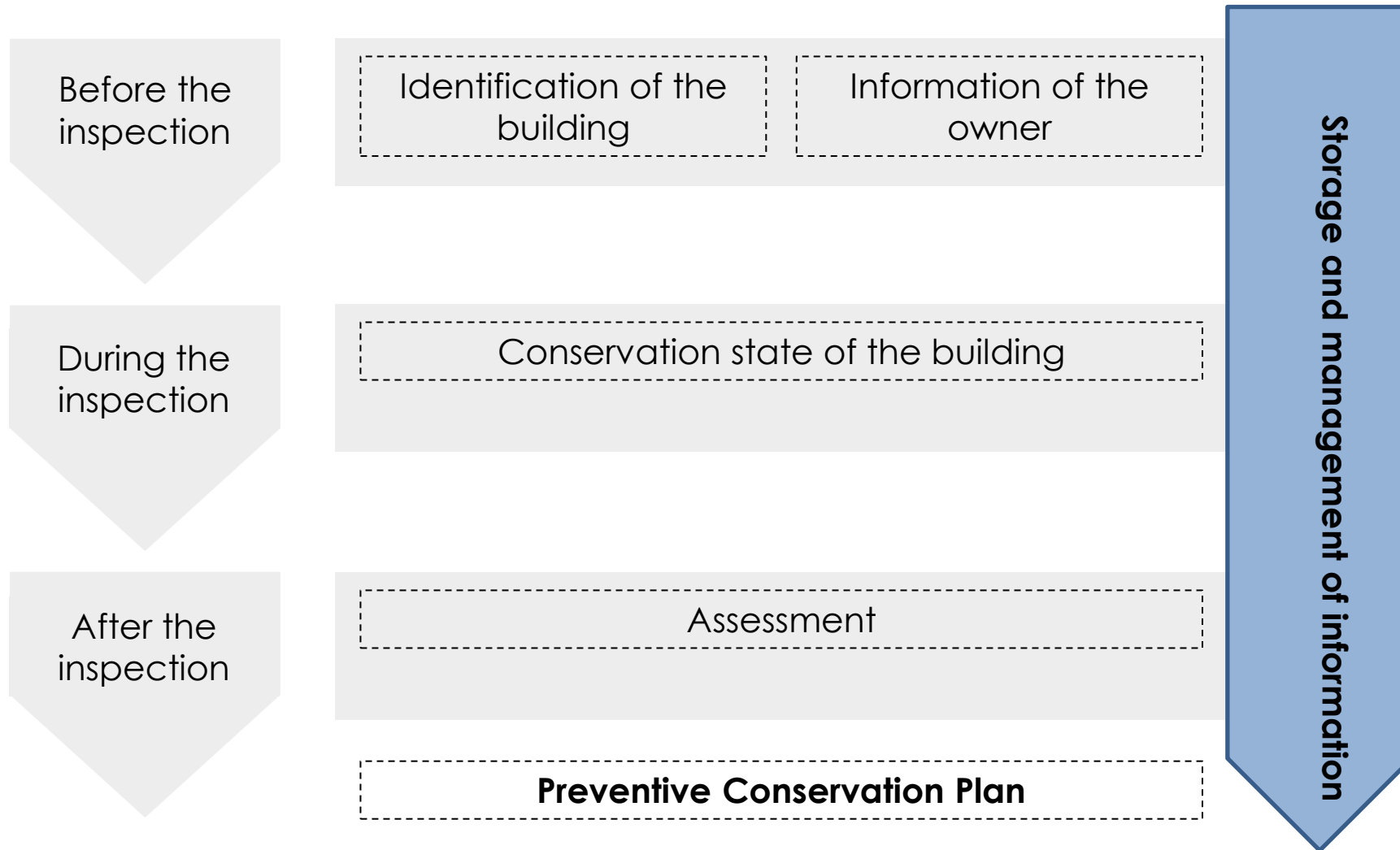
# KNOWLEDGE IN CULTURAL HERITAGE



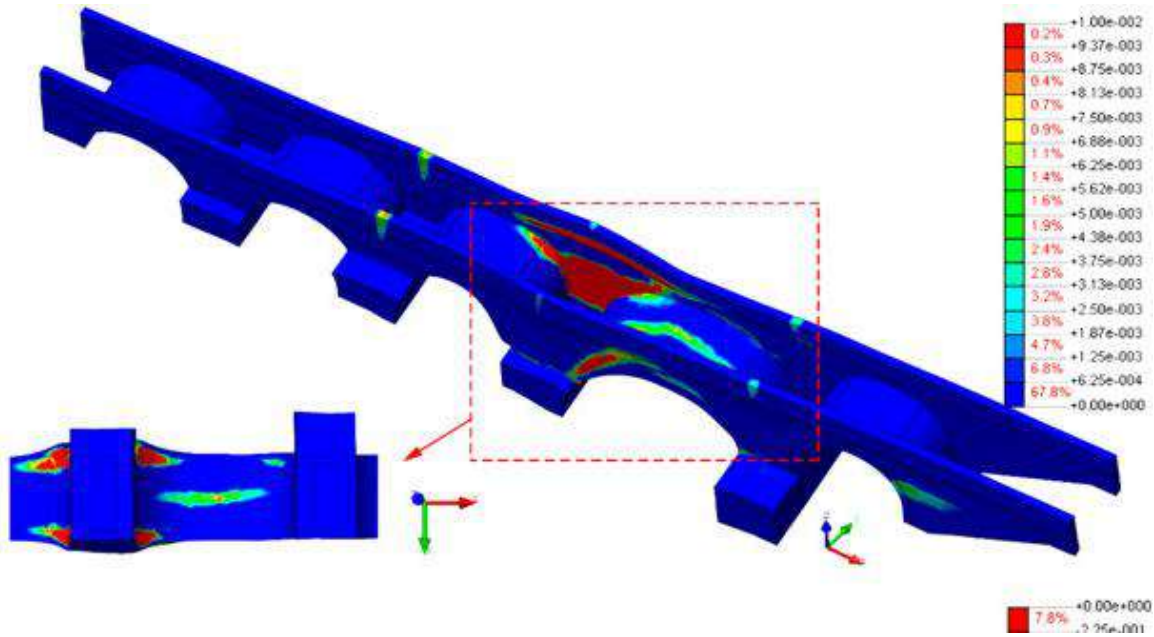
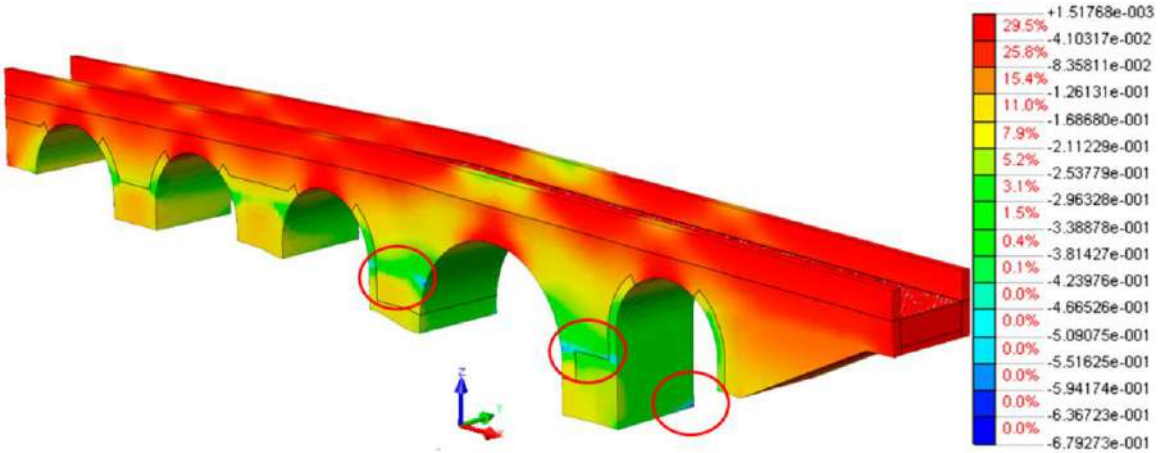
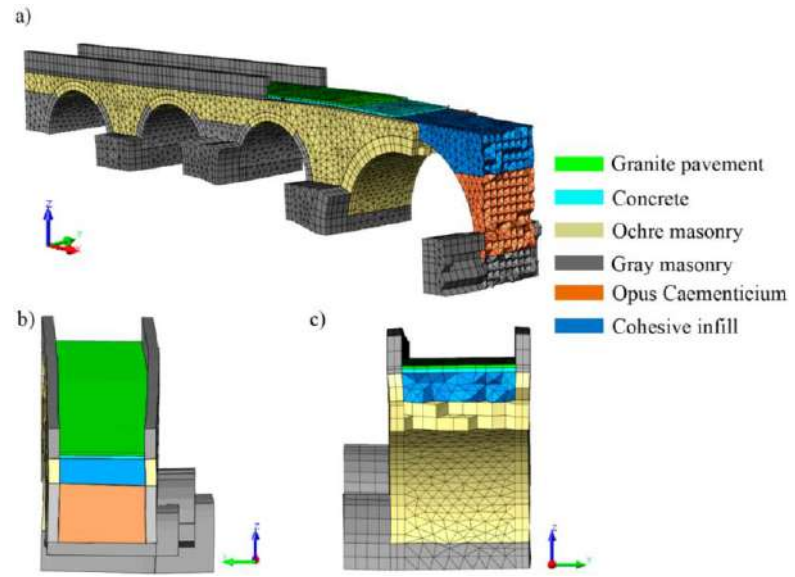
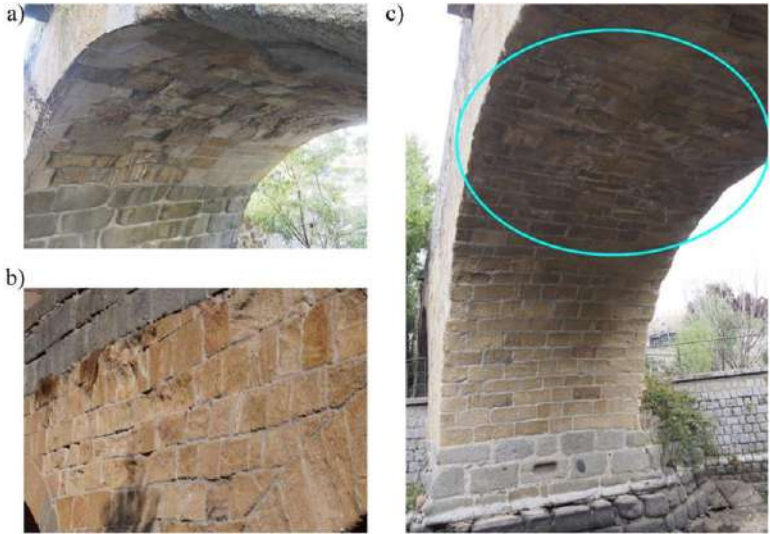
Class No.	Condition Classification	Symptoms	Urgency Risk Classification	Comments
0	Good	No symptoms	Long term	No immediate actions required   Preventive monitoring is necessary
1	Fair	Minor Symptoms	Medium term	The condition of the fabric is not perfect but does not need immediate action   Monitoring is necessary to prevent further decay
2	Poor	Moderately Strong Symptoms	Short term	The condition of the fabric is such that it needs timely repair or additional inspection and diagnosis work
3	Bad	Major Symptoms	Urgent and Immediate	Urgent repair is necessary   Urgent additional inspection and diagnosis work
NA/NI	Not Accessible	Parts not (safely) accessible	Not Inspected	Parts that are 'not inspected' are either not (safely) accessible for the building inspectors or not visible

Masonry Wall	
<b>Damage 1</b>	
Damage Class	Biological Colonization
Damage Sub Class	Beams and floors
Damage Sub Sub Class	Moist Area
Condition Classification	Poor
Symptoms	Moderately Strong Sym...
Condition Grade	In poor condition
Description	Se detectan valores d...
Location	Planta Baja
<b>Damage 2</b>	
Damage Class	Crack
Damage Sub Class	Columns and Walls
Damage Sub Sub Class	Broken Elements
Condition Classification	Fair
Symptoms	Minor Symptoms
Condition Grade	In fair condition
Description	Se detectan valores d...

# PREVENTIVE MODEL IN CULTURAL HERITAGE



# PREDICTIVE MODEL IN CULTURAL HERITAGE





# PREDICTIVE NUMERICAL MODELS

Muralla de Ávila (Spain)

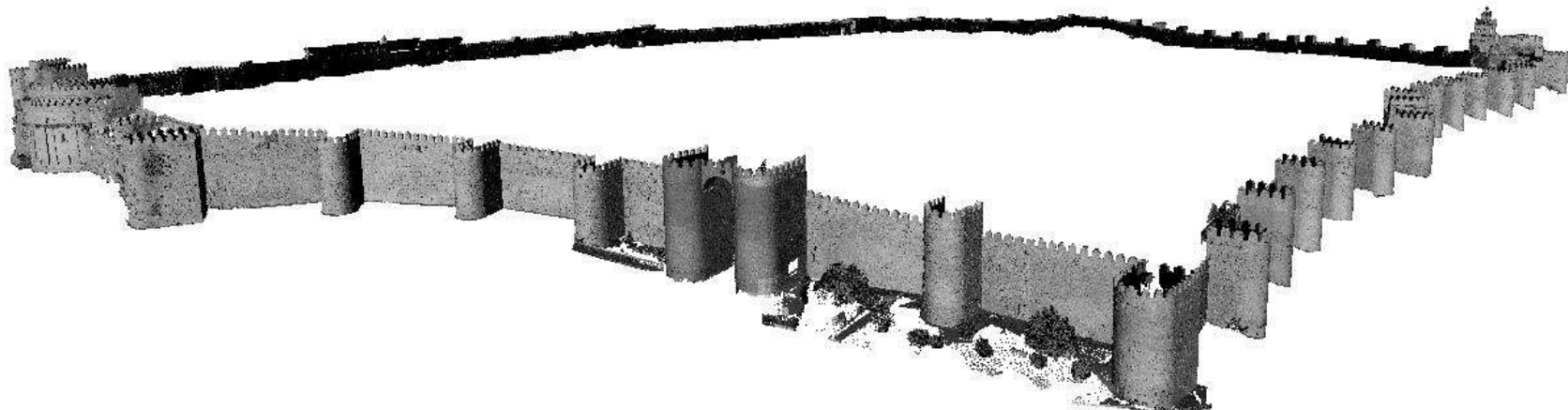
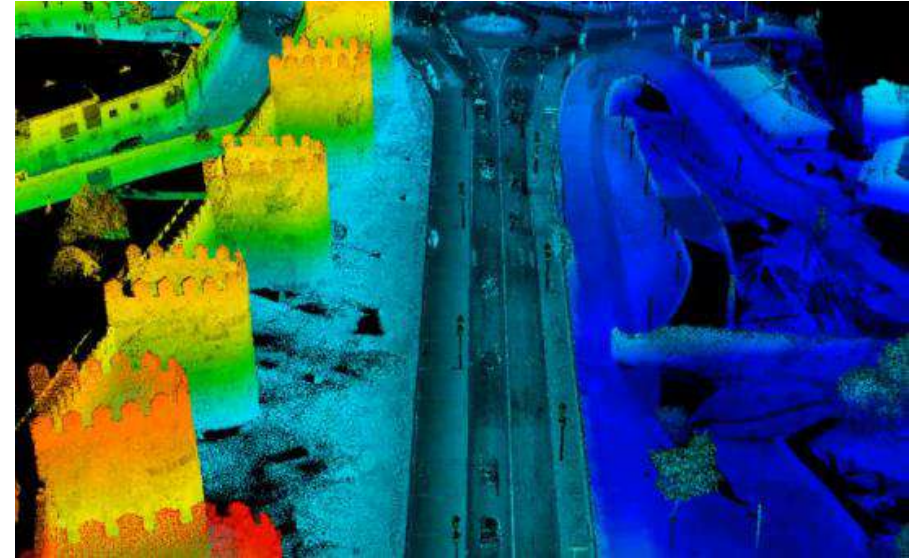
# Muralla de Ávila data acquisition



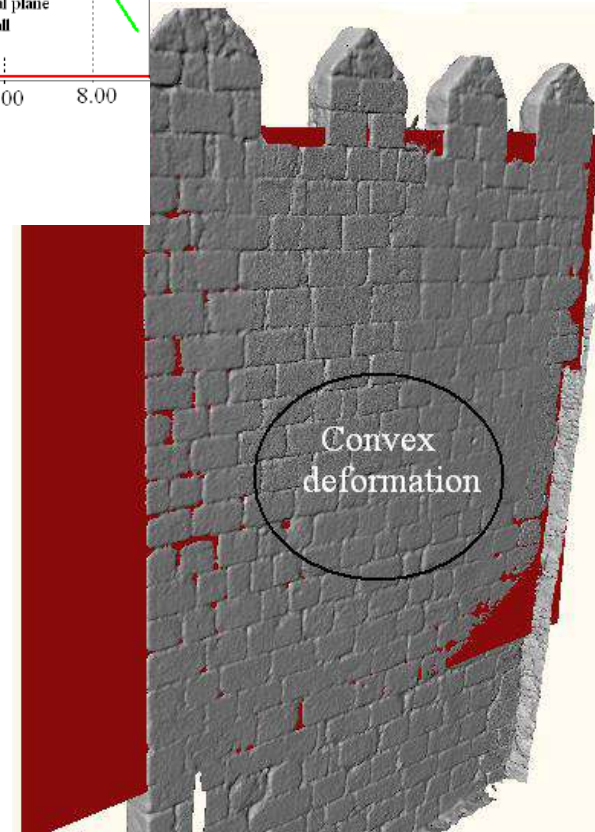
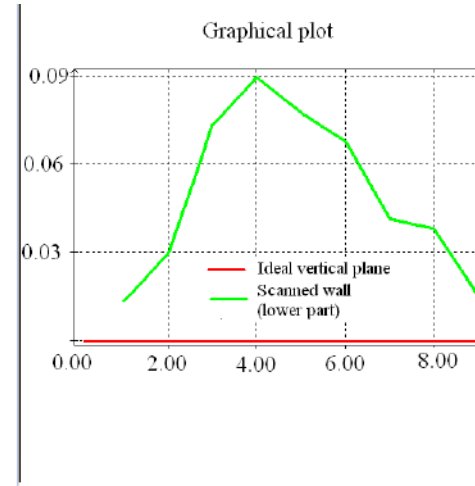
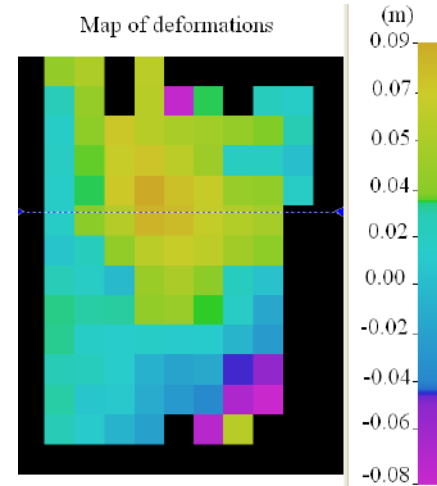
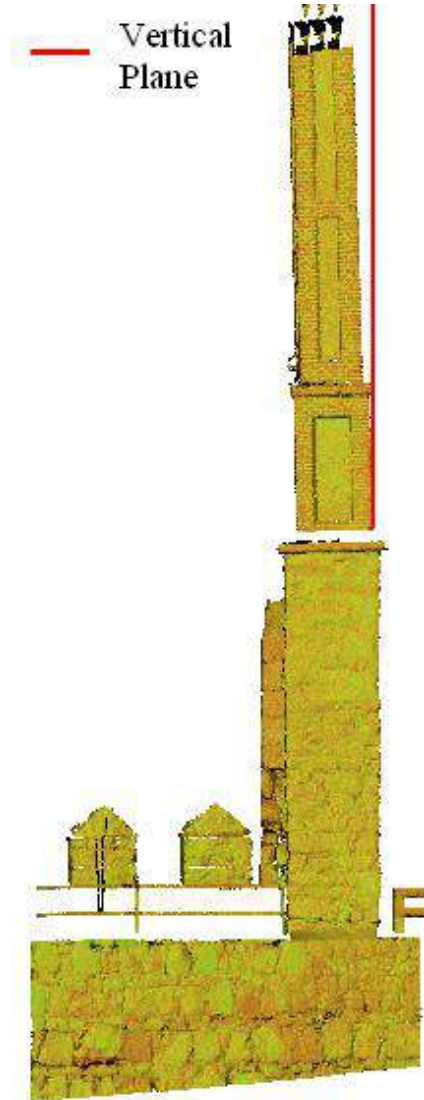
# Muralla de Ávila data acquisition



# Muralla de Ávila data acquisition

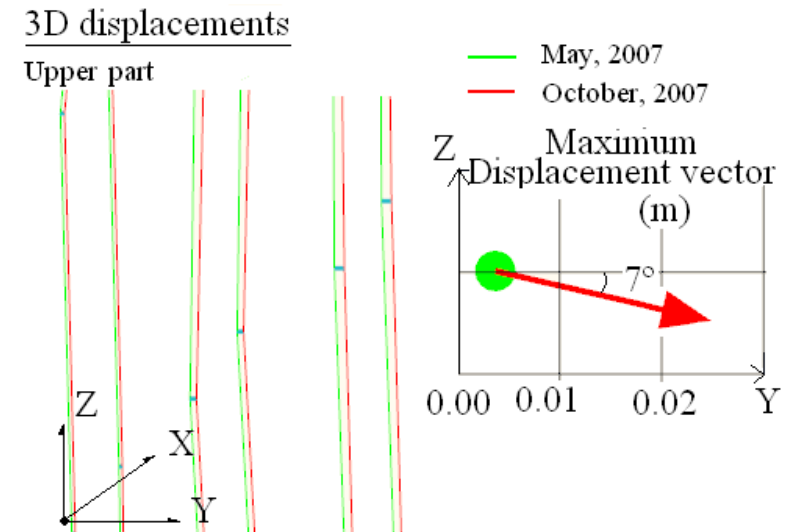
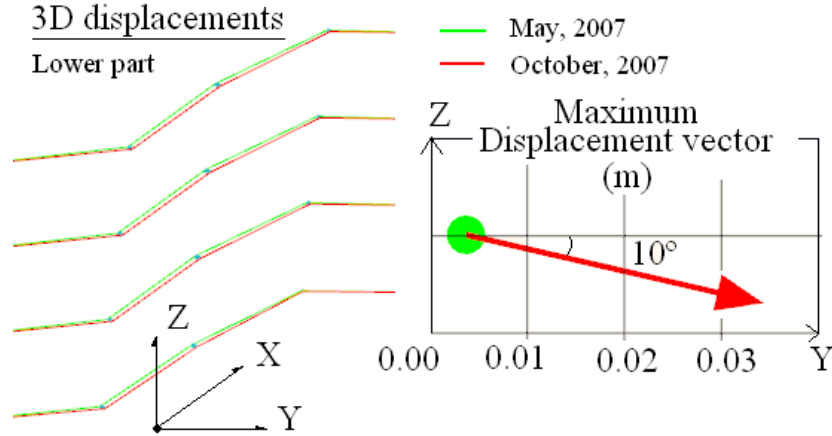
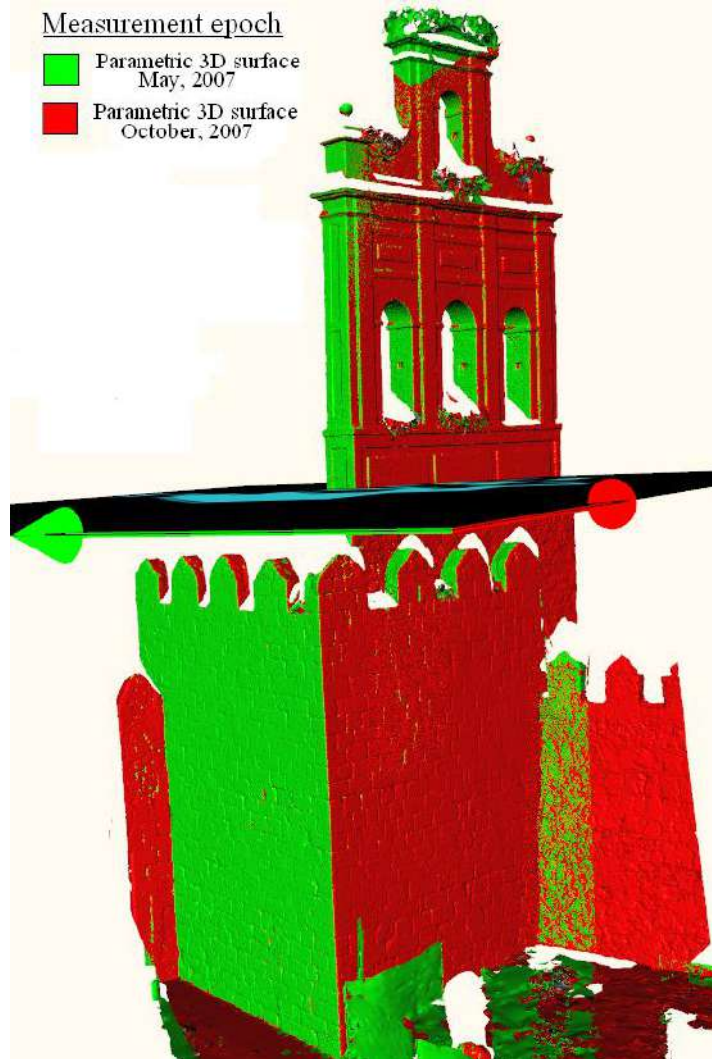


# Muralla de Ávila: Structural Monitoring



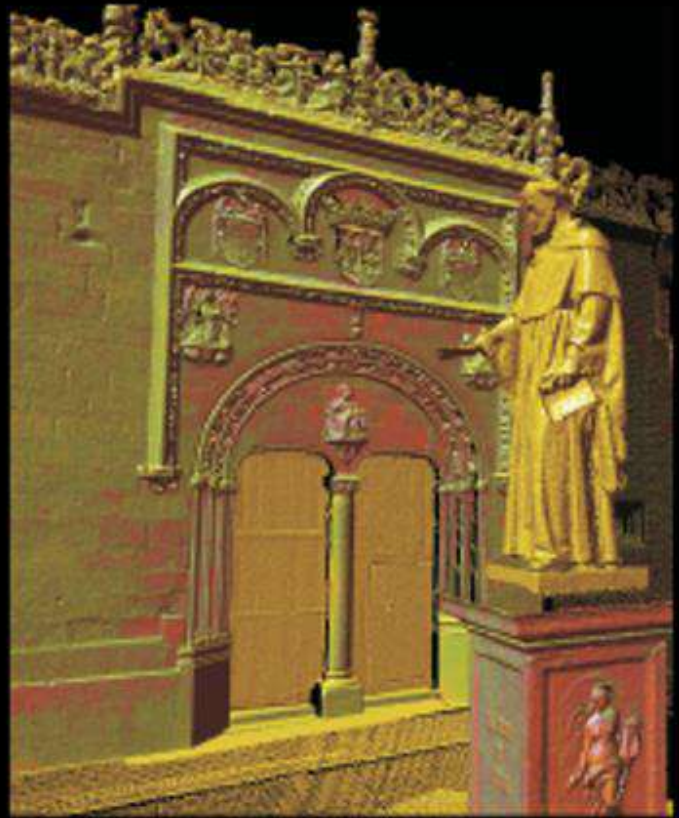


# Muralla de Ávila: Structural Monitoring



# Muralla de Ávila: Structural Monitoring





# SMART CULTURAL [H]ERITAGE PLATFORM

Escuelas Mayores, USAL  
(Spain)

# DIGITALIZING WITH WEARABLE TECHNOLOGIES



# MONITORING WITH IoT SENSORS

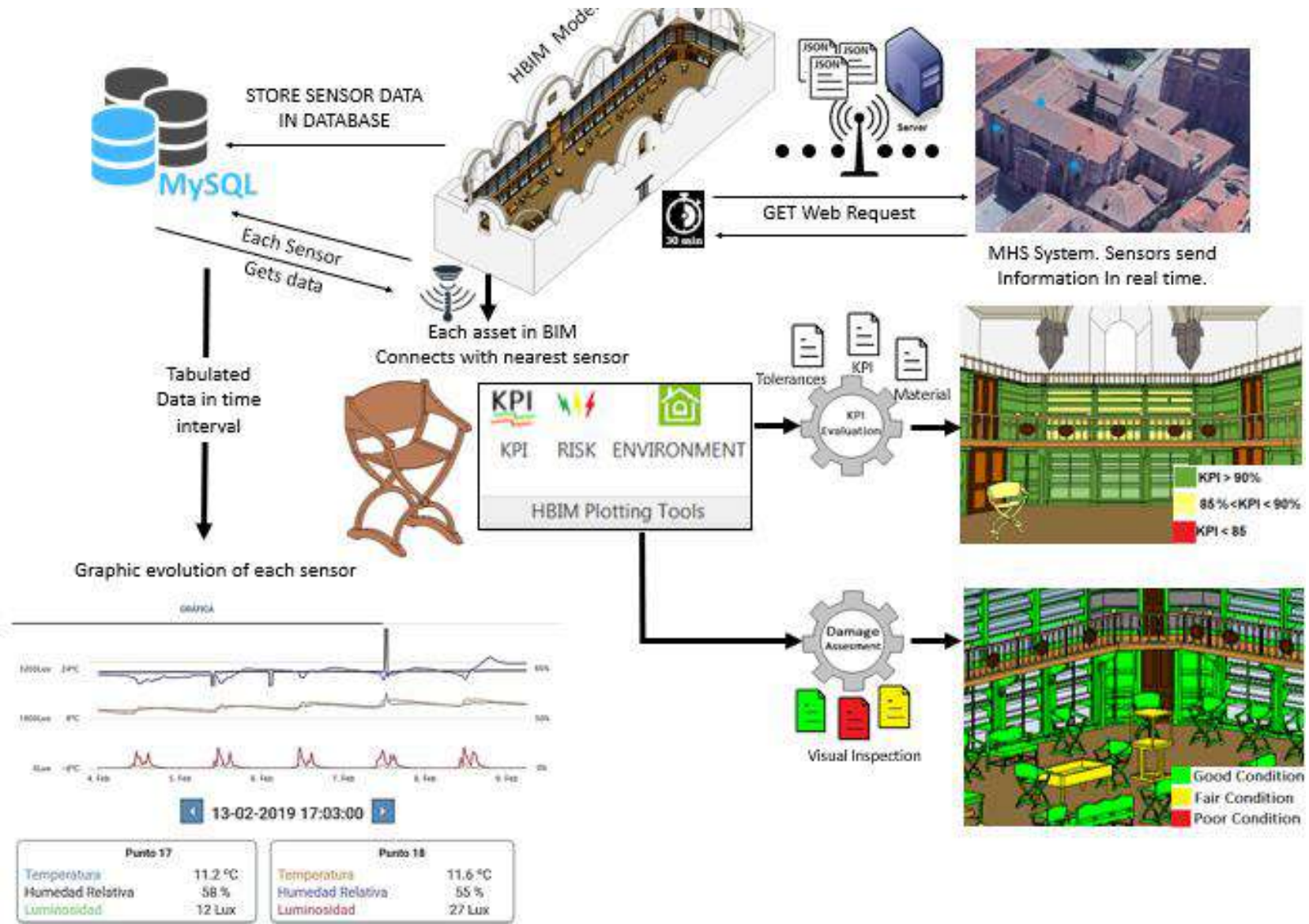


Masonry Wall	
<b>Damage 1</b>	
Damage Class	Biological Colonization
Damage Sub Class	Beams and floors
Damage Sub Sub Class	Moist Area
Condition Classification	<b>Poor</b>
Symptoms	Moderately Strong Sym...
Condition Grade	In poor condition
Description	Se detectan valores d...
Location	Planta Baja
<b>Damage 2</b>	
Damage Class	Crack
Damage Sub Class	Columns and Walls
Damage Sub Sub Class	Broken Elements
Condition Classification	<b>Fair</b>
Symptoms	Minor Symptoms
Condition Grade	In fair condition
Description	Se detectan valores d...

**MHS**  
Monitoring Heritage System

  
**Santa María la Real** fundación

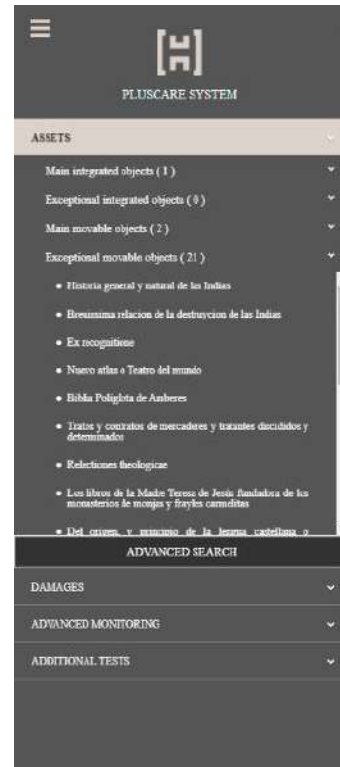
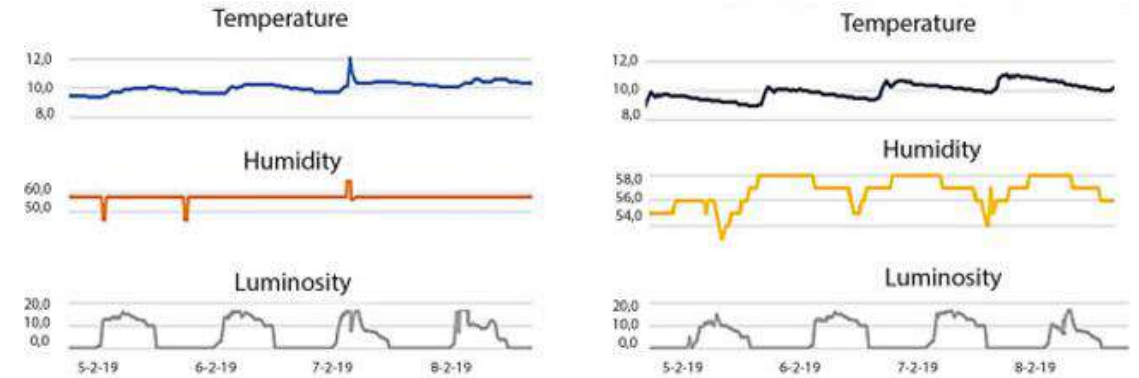
# DATA INTEGRATION TOWARDS A DIGITAL TWIN



# PREVENTIVE MODEL IN CULTURAL HERITAGE

## INSPECTION LEVEL (PREVENTION)

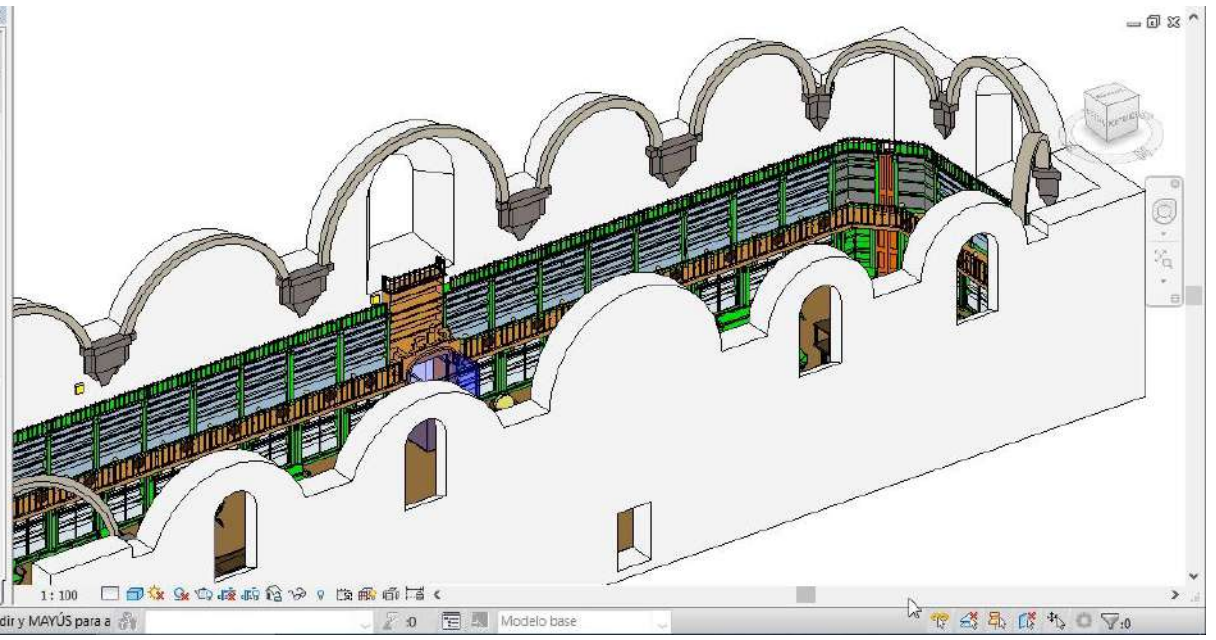
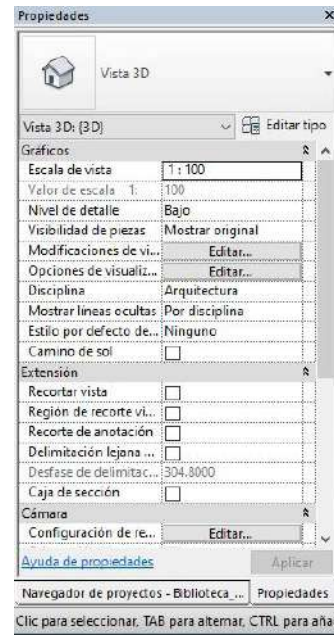
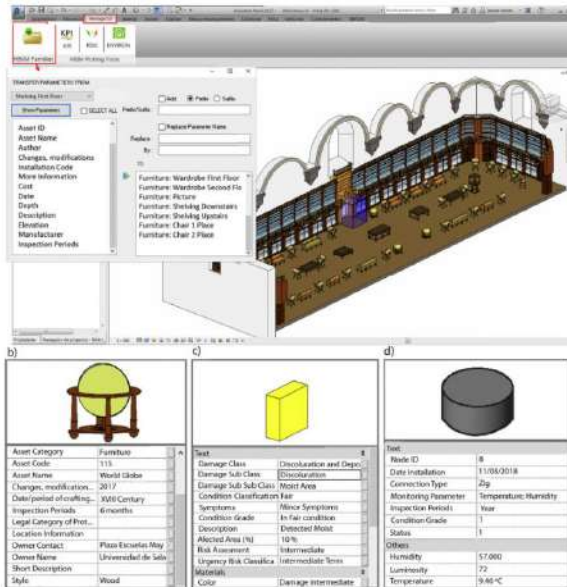
- ✓ Monitoring
- ✓ 2D and 3D inspection
- ✓ Virtual environment
- ✓ Best practices



# PREDICTIVE MODEL IN CULTURAL HERITAGE

## SIMULATION LEVEL (PREDICTION)

- ✓ Risk mapping
- ✓ 4D analysis
- ✓ FEM & HBIM
- ✓ Support Decision Taking

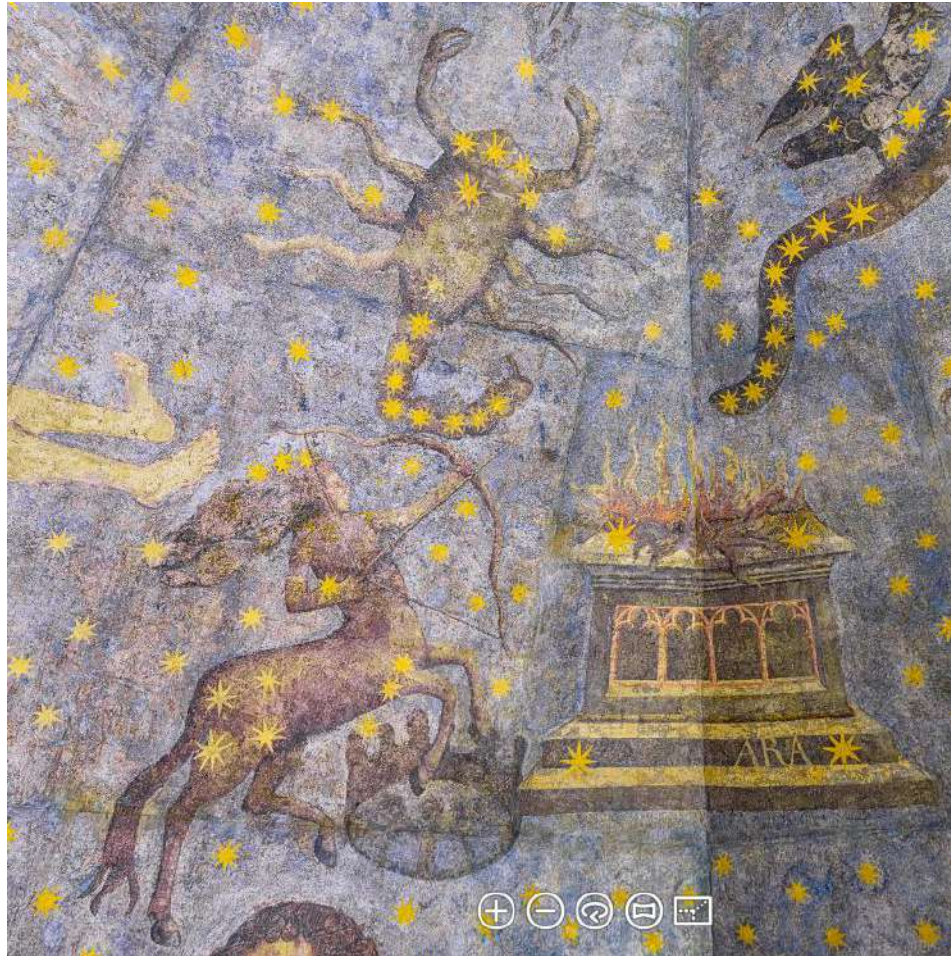




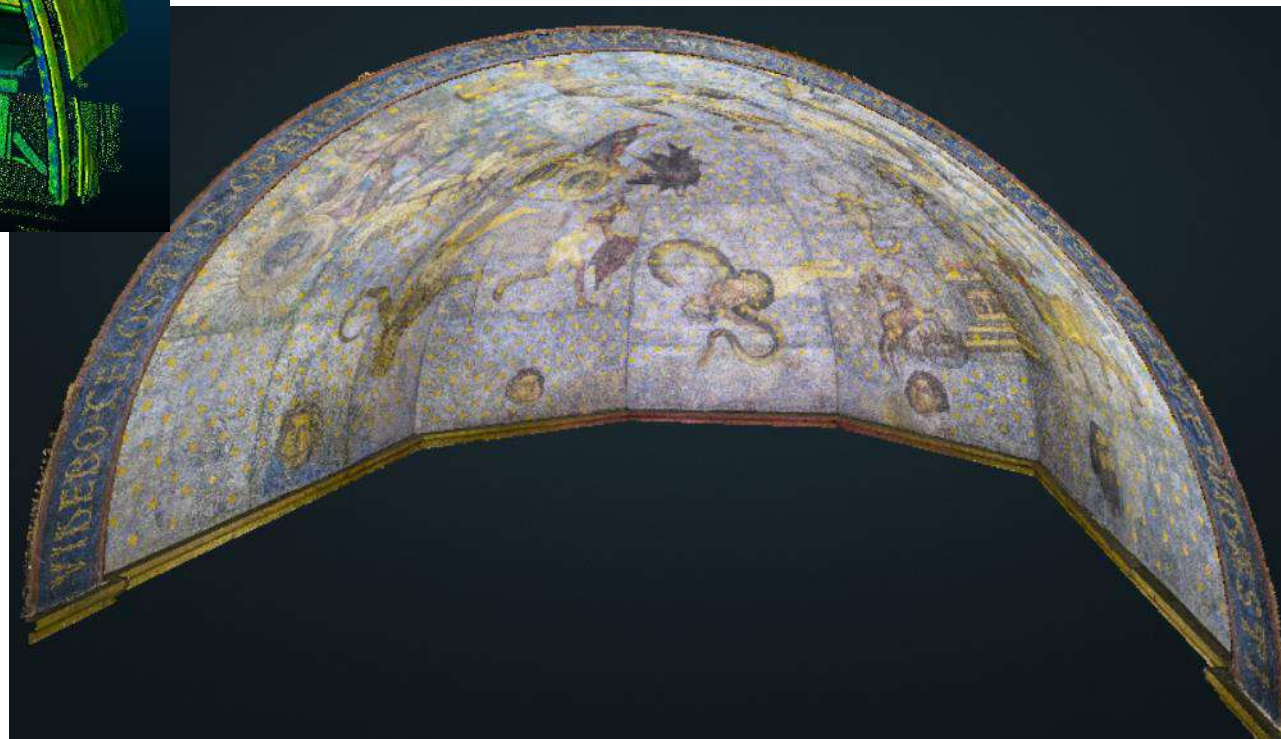
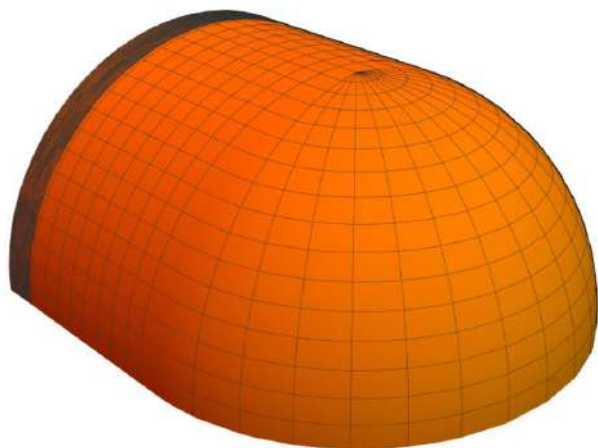
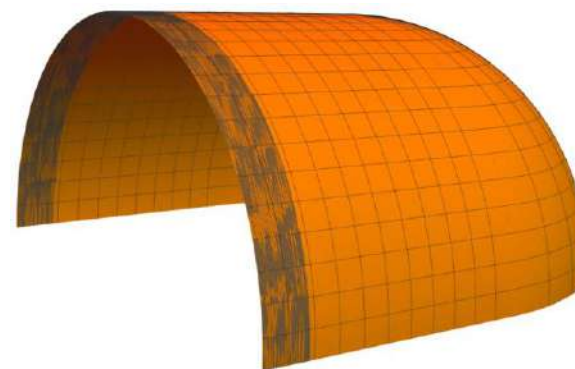
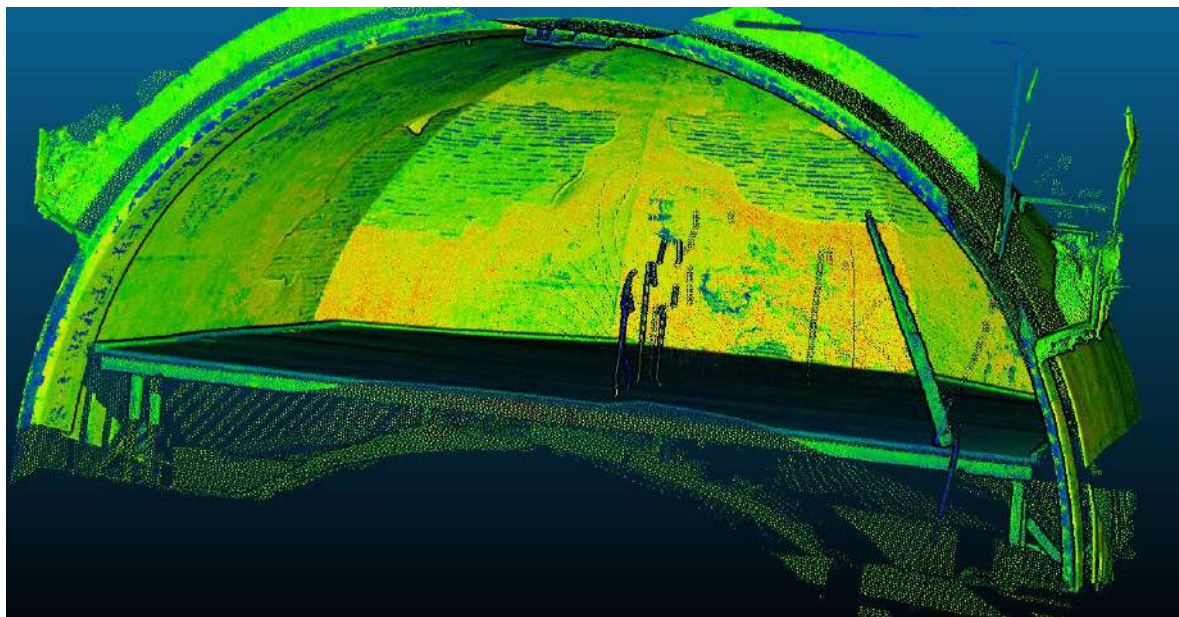
# SIMULATION MODEL IN THE SKY OF SALAMANCA



# SIMULATION MODEL IN THE SKY OF SALAMANCA



# SIMULATION MODEL IN THE SKY OF SALAMANCA



# CONCLUSIONS

- ✓ Digital Twins offer a wide roadmap of possibilities in CH
- ✓ Wearable digitalization techniques represent an efficient solution
- ✓ Monitoring sensors based on IoT and LoRaWAN network
- ✓ Smart Cultural Heritage platforms are key to success
- ✓ *“Prevention is better than cure”*



**CD-ETA**  
Interreg Europe



European Union  
European Regional  
Development Fund

**THANKS FOR YOUR ATTENTION**

**Diego Gonzalez-Aguilera**

[daquilera@usal.es](mailto:daquilera@usal.es)

<https://tidop.usal.es>



VNIVERSIDAD  
D SALAMANCA  
CAMPUS DE EXCELENCIA INTERNACIONAL

**tidop**  
RESEARCH GROUP