

WoodChainManager InfoGozd

ONLINE TOOLS

ATEVZ, TRIPLAT, NIKE KRAJI



GOZDARSKI INŠTITUT SLOVENIJE
SLOVENIAN FORESTRY INSTITUTE



WoodChainManager

AGENDA

DEVELOPMENT
WCM / INFOGOZD



TOOLS



EXAMPLES



FURTHER
DEVELOPMENT



WHAT IS WCM/INFOGOZD?



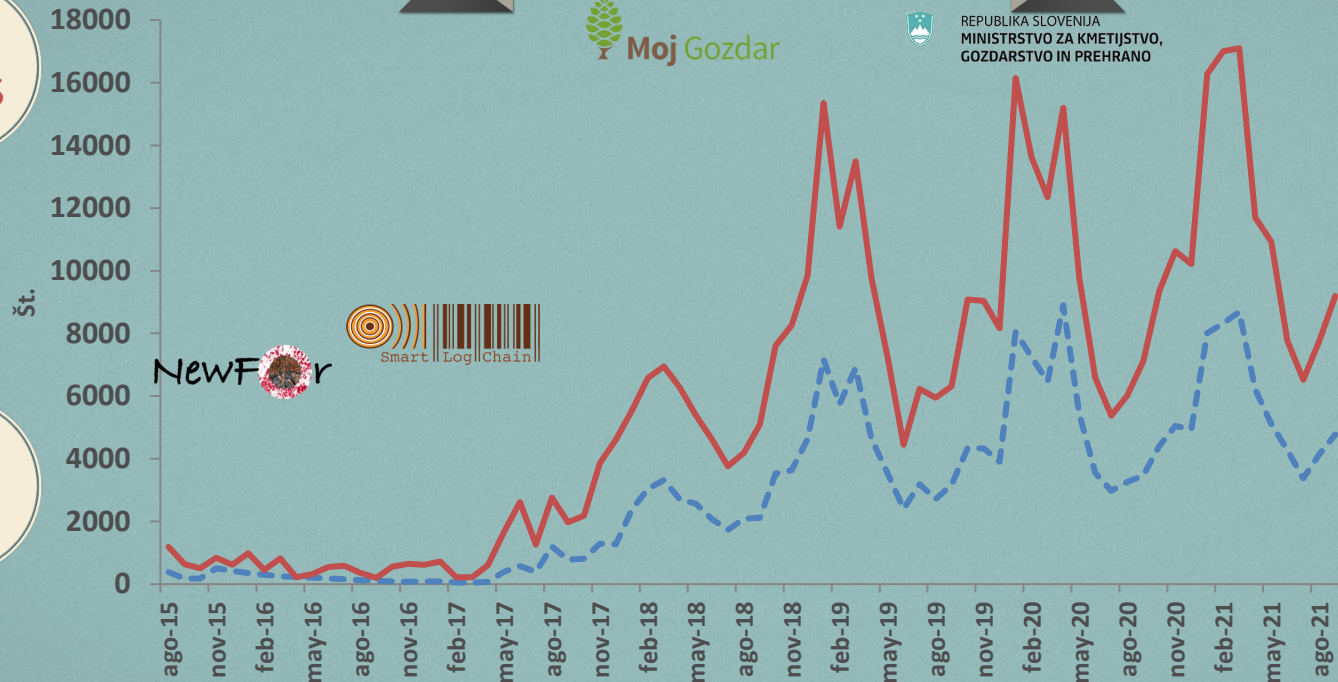
Extension tool, transferability and durability...

TRENDS



REPUBLIKA SLOVENIJA
MINISTRSTVO ZA KMETIJSTVO,
GOZDARSTVO IN PREHRANO

PAGE
VISITS



NewFor



USERS

90% of users come from Slovenia (followed by the USA, Croatia, Germany, Austria, Italy...)

DEVELOPMENT

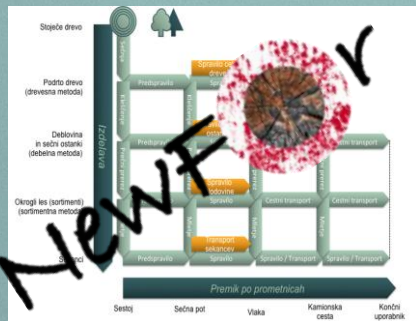
WOODCHAINMANAGER

COST CALCULATION

NORMS
UNIT CON.

MONITORING OF
PRICES

TRADEMARK
MOJGOZDAR



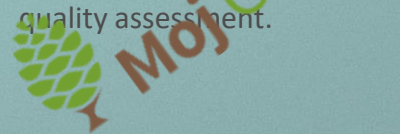
We have developed a tool for setting harvesting and harvesting norms; a unit converter and an energy calculator that allows indicative calculations between different units (volume, mass, energy) for different forms of wood and added short new systems on forest engineering and economics.

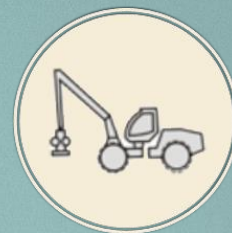
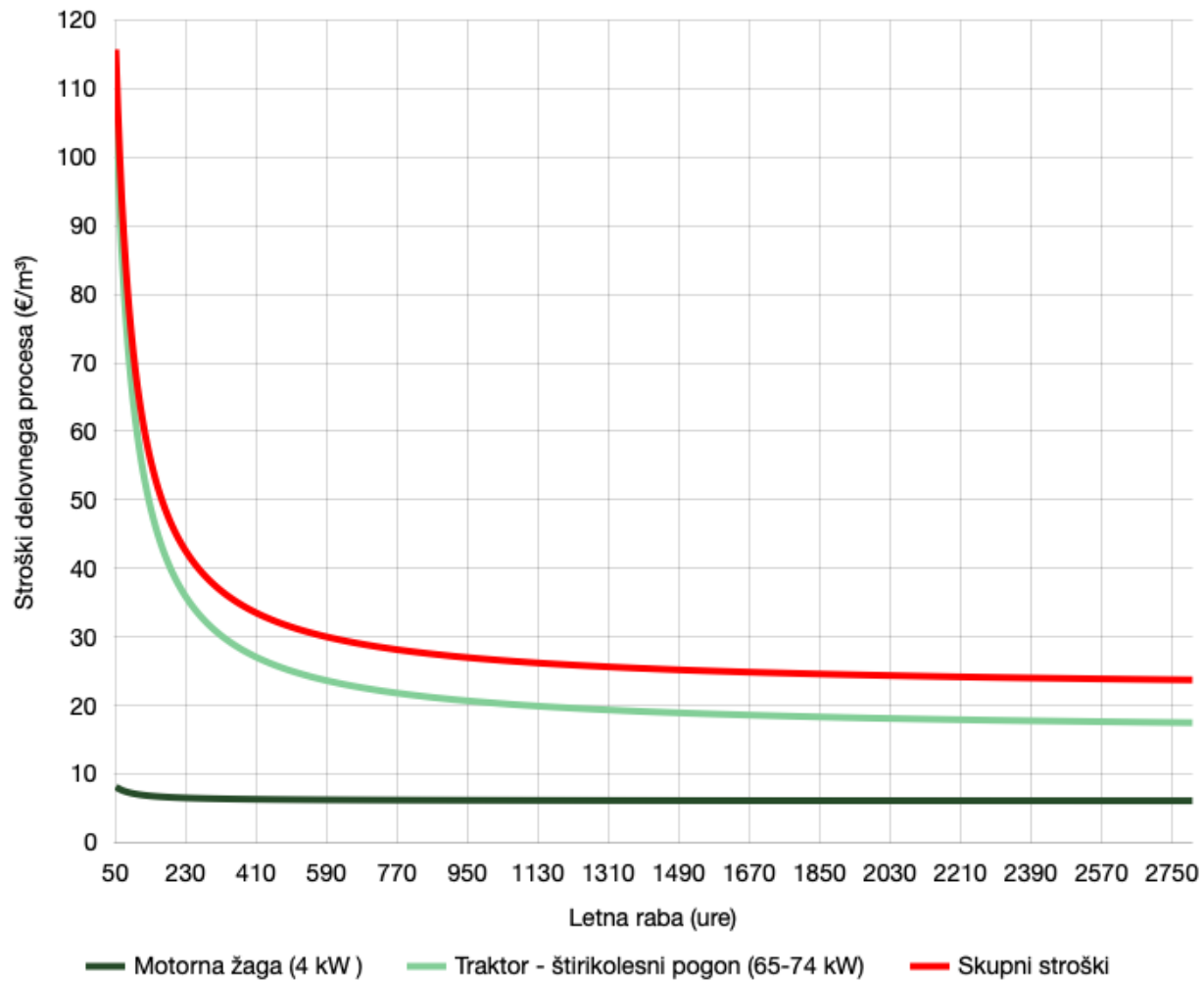
In 2017, we set up a price monitoring system for timber and forestry services. We have been monitoring the market prices of wood fuels using a common methodology since 2011.

A comprehensive quality assessment system for forestry contractors is based on rating and data collection as a basis for a preliminary quality assessment.



REPUBLIKA SLOVENIJA
MINISTRSTVO ZA KMETIJSTVO,
GOZDARSTVO IN PREHRANO





PRODUCTIVITY

STANDARD TIMES

NORMS

With the WCM web tool, we can calculate technical norms for a specific worksite based on assumptions, formulas and ratings that are based on the scientific study of the work, i.e. through recordings and measurements. The module for calculating forestry work norms is methodologically based on the Official Journal "Regulation on the concession for the exploitation of forests owned by the Republic of Slovenia".



GOZDARSKI INŠTITUT SLOVENIJE
SLOVENIAN FORESTRY INSTITUTE

WoodChainManager

| | | Normativ | | | | | | Storilnost [neto m ³ /h] | | | Omejitev | |
|--|---|--|--|--|------------|------------|------------|-------------------------------------|-----------|-----------|---------------|---------------|
| Sečnja | Sečnja z motorno žago | DV | Količinski popravki osnovnih normativov zaradi | | Od(min) | Do(min) | S | Od(min) | Do(min) | S | | |
| | | | netipičnih delovnih razmer | rizike koncentracije (sanitarnih sečenj) | | | | | | | popravki(min) | popravki(min) |
| Sečnja | Povprečni normativ | 0.1 | 0.0 | | 102h 17min | 124h 47min | 117h 97min | 1.54 | 1.87 | 1.63 | | |
| | | | | | 29h 43min | 37h 44min | 34h 10min | 1.99 | 2.53 | 2.20 | | |
| | | | | | 132h 0min | 162h 31min | 151h 48min | 1.64 | 2.02 | 1.76 | | |
| | | Normativi na ravni delovnega pojča | 1.0 | 0.0 | 0.0 | 0h 0min | 0h 0min | 0h 0min | Infinitly | Infinitly | Infinitly | |
| | | | | | | 0h 0min | 0h 0min | 0h 0min | Infinitly | Infinitly | Infinitly | |
| | | | | | | 0h 0min | 0h 0min | 0h 0min | Infinitly | Infinitly | Infinitly | |
| | Strojna sečnja | 1.0 | | | 2h 7min | 4h 15min | 2h 7min | 45.07 | 90.14 | 90.14 | | |
| | | | | | 1h 17min | 2h 33min | 1h 17min | 29.27 | 58.54 | 58.54 | | |
| | | | | | 3h 24min | 6h 49min | 3h 24min | 39.13 | 78.25 | 78.25 | | |
| | | Spravilo lesa | Ročno spravilo lesa | 1.0 | | 132h 10min | 227h 38min | 148h 51min | 1.17 | 2.02 | 1.82 | |
| | | | | | | 0h 0min | 0h 0min | 0h 0min | Infinitly | Infinitly | Infinitly | |
| | | | | | | 0h 0min | 0h 0min | 0h 0min | Infinitly | Infinitly | Infinitly | |
| Spravilo lesa z žbicami | veliki večboboški žični žerjavi s stolpi - linije do 400 m, nosilnost do 2,5 t | | 1.0 | 1.1 | 57h 52min | 85h 30min | 25h 38min | 2.24 | 3.31 | 7.47 | | |
| | | | | | 25h 49min | 38h 4min | 11h 10min | 1.97 | 2.91 | 6.72 | | |
| | | | | | 83h 41min | 123h 34min | 36h 49min | 2.16 | 3.19 | 7.25 | | |
| | | veliki večboboški žični žerjavi s stolpi - linije do 800 m, nosilnost do 3 t | 1.4 | 1.1 | 11h 32min | 17h 18min | 16h 45min | 11.08 | 16.62 | 11.44 | | |
| | | | | | 4h 54min | 7h 21min | 7h 7min | 10.20 | 15.31 | 10.54 | | |
| | | | | | 16h 26min | 24h 39min | 23h 52min | 10.82 | 16.23 | 11.17 | | |
| | srednji večboboški žični žerjavi s stolpi - linije do 400 m, nosilnost do 1,5 t | 1.0 | 1.1 | 40h 44min | 62h 50min | 26h 32min | 3.05 | 4.71 | 7.22 | | | |
| | | | | 18h 4min | 27h 49min | 11h 35min | 2.70 | 4.15 | 6.47 | | | |
| | | | | 58h 48min | 90h 40min | 38h 8min | 2.94 | 4.54 | 6.99 | | | |
| | | majhni večboboški žični žerjavi s stolpi - linije do 200 m, nosilnost do 1,0 t | 1.0 | 1.1 | 39h 2min | 60h 24min | 26h 1min | 3.17 | 4.91 | 7.37 | | |
| | | | | | 17h 1min | 26h 14min | 11h 3min | 2.86 | 4.41 | 6.79 | | |
| | | | | | 56h 3min | 86h 39min | 36h 44min | 3.08 | 4.76 | 7.19 | | |
| klasični žični žerjavi - linije do 200 m, nosilnost do 2,5 t | 1.0 | 1.1 | 177h 37min | 251h 34min | 55h 45min | 0.76 | 1.08 | 3.44 | | | | |
| | | | 79h 57min | 113h 10min | 24h 35min | 0.66 | 0.94 | 3.05 | | | | |
| | | | 257h 35min | 364h 44min | 80h 21min | 0.73 | 1.04 | 3.32 | | | | |
| Spravilo lesa s traktorji | Prilagojen kolesni kmetijski traktor | 1.0 | 1.0 | 1.0 | 1.0 | 3h 21min | 5h 51min | 0h 1min | 32.74 | 57.02 | 11501.52 | |
| | | | | | | 0h 0min | 0h 0min | 0h 1min | Infinitly | Infinitly | 4505.42 | |
| | | | | | | 3h 21min | 5h 51min | 0h 0min | 45.57 | 79.35 | 8003.47 | |
| | Veliki gozdarski zgibni traktor | 1.0 | 1.0 | 1.0 | 1.0 | 1.0 | 3h 5min | 5h 39min | 0h 1min | 33.90 | 62.06 | 11501.52 |
| | | | | | | | 0h 0min | 0h 0min | 0h 1min | Infinitly | Infinitly | 4505.42 |
| | | | | | | | 3h 5min | 5h 39min | 0h 0min | 47.19 | 86.37 | Infinitly |

ASSORTMENTS QUALITY CLASS

NET4FOREST

A web-based roundwood quality grading tool for all users who want a convenient way to determine the quality of logs and at the same time gain basic knowledge on the evaluation of forest wood assortments. The system guides the user through a set of questions on defects and dimensions of the assortment. The tool is based on a web application, so a web connection is required to use it. The display mask is also adapted for use on mobile devices.



Ekscentričnost



4. Lastnosti

3/12 Ekscentričnost

Ekscentričnost je odmik stržena od geometričnega središča prečnega prereza sortimenta.

Ekscentričnost je odmik stržena od geometričnega središča prečnega prereza sortimenta.

Izmerimo jo kot razdaljo (e) med strženom in geometrijskim središčem prečnega prereza, rezultate pa podamo v cm glede na premer (D) čela hloda.

Ekscentričnost

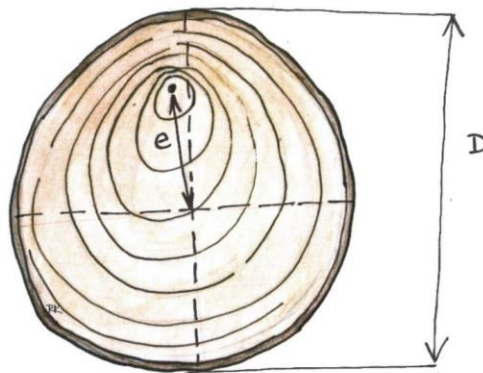
Odmik stržena [cm]

Premer čela hloda [cm]

Ekscentričnost

← Nazaj

Na



UNIT CONVERTER

ENERGY EQUIV.

The WCM web tool can be used to convert units of measurement such as volume of wood fuels, masses of wood fuels, energy content and, based on the calorific value of wood fuels, conversion to energy equivalents (e.g. fuel oil, LPG and wood pellets).

Orodja > **Kalkulator enot**

Kalkulator enot

KALKULATOR ENOT

Navodila

Drevesna vrsta

Vsebnost vode (w%)

Masa

Sveža snov t

Suha snov t

Prostornina

Okrogli les m³

Sekanci nm³

Polena (1m) prm

Kurilnost

GJ

MWh

Ekvivalenti

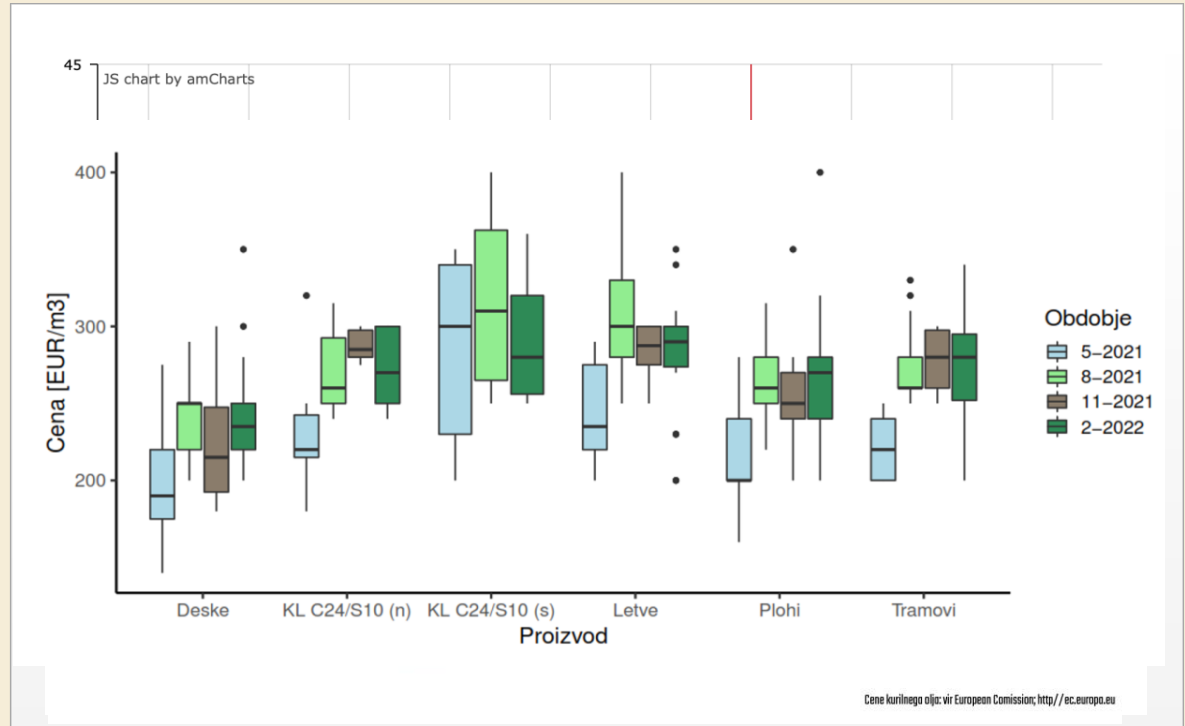
Kurilno olje l

Lesni peleti t

Utekočinjen naftni plin l

PRICE MONITORING

In 2017, we set up a price monitoring system for timber and forestry services. We have been monitoring the market prices of wood fuels using a common methodology since 2011.



17 INDICATORS

FOREST POLICY

- RDP measures impacts on the development of the forestry sector
- Projects supported under the RDP
- Management with State Forests



BIOECONOMY

- Employment in the forestry sector
- Forestry education
- The economic activity of the forestry and forestry sector

TIMBER HARVESTING

- Primary openness of forests
- Forestry mechanisation
- Forest management of agricultural holdings
- Forest certification



FOREST OWNERSHIP

- Socio-demographic characteristics of private forest owners in Slovenia
- Forest ownership and tenure structure

PROFESSIONALISATION

- Health and safety at work in forests
- Forest service providers



WOOD MARKET

- Timber purchase from private forests
- Wood flows

STATE WITH TREND



PROGRESSING TOWARDS THE TARGETS

- Development towards qualitatively or quantitatively defined targets.



THE STATE REMAINS UNCHANGED

- The undefinable direction of development, insufficient development to meet qualitative/quantitative targets may also be the variable direction of development within the indicator.



REGRESSING IN PROGRESS TOWARD THE TARGET

- It indicates unfavourable developments where the situation is moving away from the objectives.

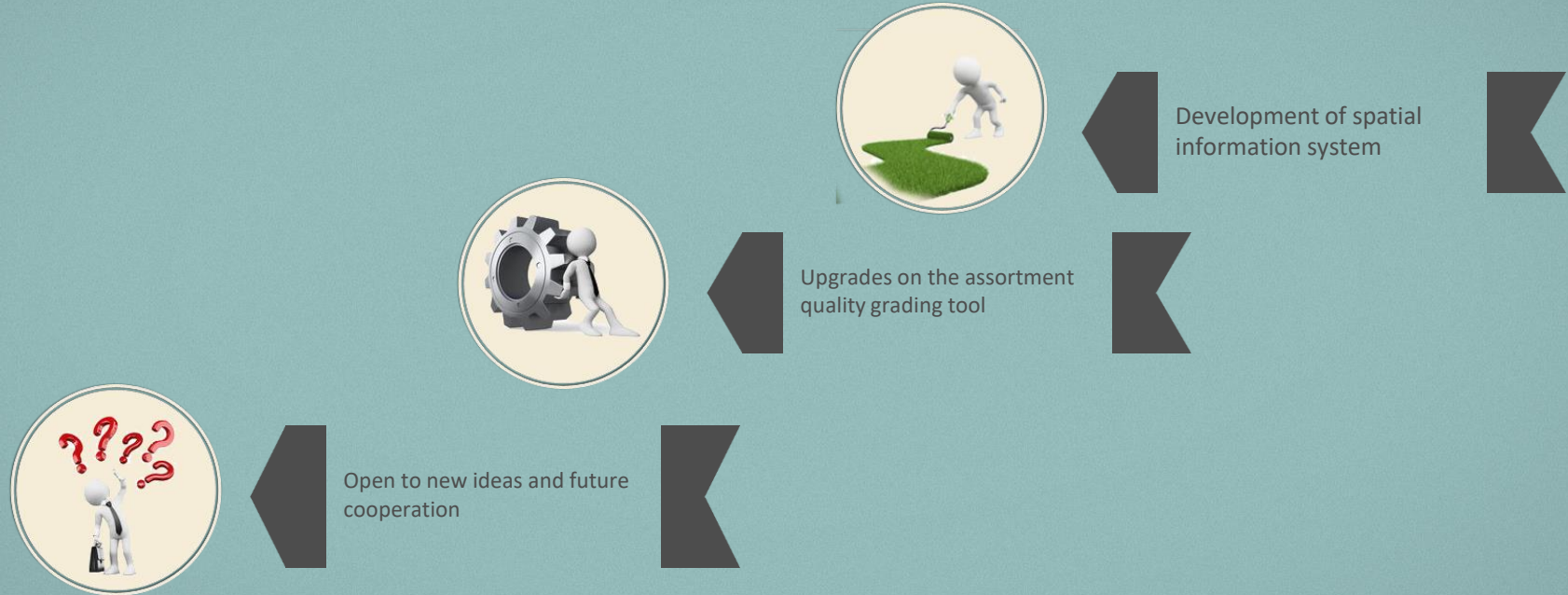
INDICATORS

The screenshot displays the WCM InfoGozd website interface. At the top left is the logo for WCM InfoGozd. The navigation menu includes 'InfoGozd', 'Podatki', 'Orodja', 'MojGozdar', 'Novice', 'EN', and a search icon. The main content area features a news article titled 'Maja prva izkušnja s sečnjo, spravilom in odkupom lesa' dated 18.10.2021, accompanied by a photo of a forest with logs. To the right, a dark green sidebar lists three news items: 'NeVARNO s traktorjem' (03.10.2021), 'Izrazite spremembe v zunanji trgovini okroglega lesa' (21.09.2021), and 'Cene žagarskih proizvodov so bile v avgustu znatno višje kot v prvi polovici leta' (19.09.2021). Below the main content, there are two sections: 'InfoGozd' with sub-sections for 'Strokovni in znanstveni prispevki' and 'Priručnik za lastnike gozdov', and 'MojGozdar' with sub-sections for 'Shema S4Q' and a description of a quality control system.

[HTTPS://WCM.GOZDIS.SI/SL/PODATKI/KAZALNIKI/](https://wcm.gozdis.si/sl/podatki/kazalniki/)

ARCTUR
where
creativity
meets
experience

PLANS



WHO ARE WE AND WHERE CAN YOU FIND US?

Department
for Forest
Technique and
Economics



WCM.GOZDIS.SI

WWW.MOJGOZDAR.SI

WWW.FACEBOOK.COM/GISGTE

GTEINFO@GOZDIS.SI

(01) 287-78-06

matevz.triplat@gozdis.si

Večna pot 2, 1000 Ljubljana