

Action Plan Implementation Final Conference

Delivering Efficient
Sustainable Tourism
with low-carbon
transport Innovations:
Sustainable Mobility,
Accessibility and
Responsible Travel

DESTI-SMART
Interreg Europe



Action Plan for
Vidzeme Region



Pafos, 28 April 2022
Raitis Sijāts, Latvian Greenways Association

Greenways are disused railways lines, and canal towpaths suitable for non-motorised transport which are **accessible, safe and easy-to-use** for walkers and cyclists.

They provide a series of common characteristics:

Ease of passage: their slopes, either **low or zero gradient**, allow their use by all types of users, **including mobility impaired people**.

Safety, due to their separation from roads, and to appropriate safeguards at the intersections.

Train/GW/ EV 13 network in Latvia





Charging for e-bikes (Gulbene)



Charging for e-bikes (Alūksne)

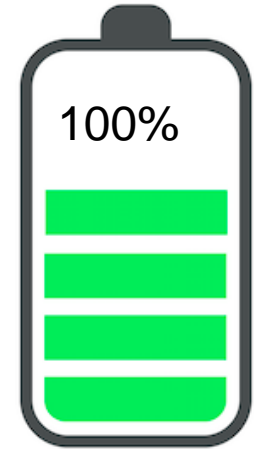


Charging station for e-vehicles (Ērgļi former station)





Action 2: Intermodality improvements - Development of public railway transport routes and timetables to improve accessibility to destinations important for cycling tourism



Planned

- Additional public rail transport services that complements with cycle tourist needs;
- Given advice on bicycle carriage capacity necessary for tourism needs, especially in high season;
- Given presentation of the activity in local governments.

Done

- Regular passenger train traffic re-established from Rīga to Gulbene (with stops at Madona and Cesvaine) – 100% complete
- Might be tested – everyday train schedule for summer months

In addition:

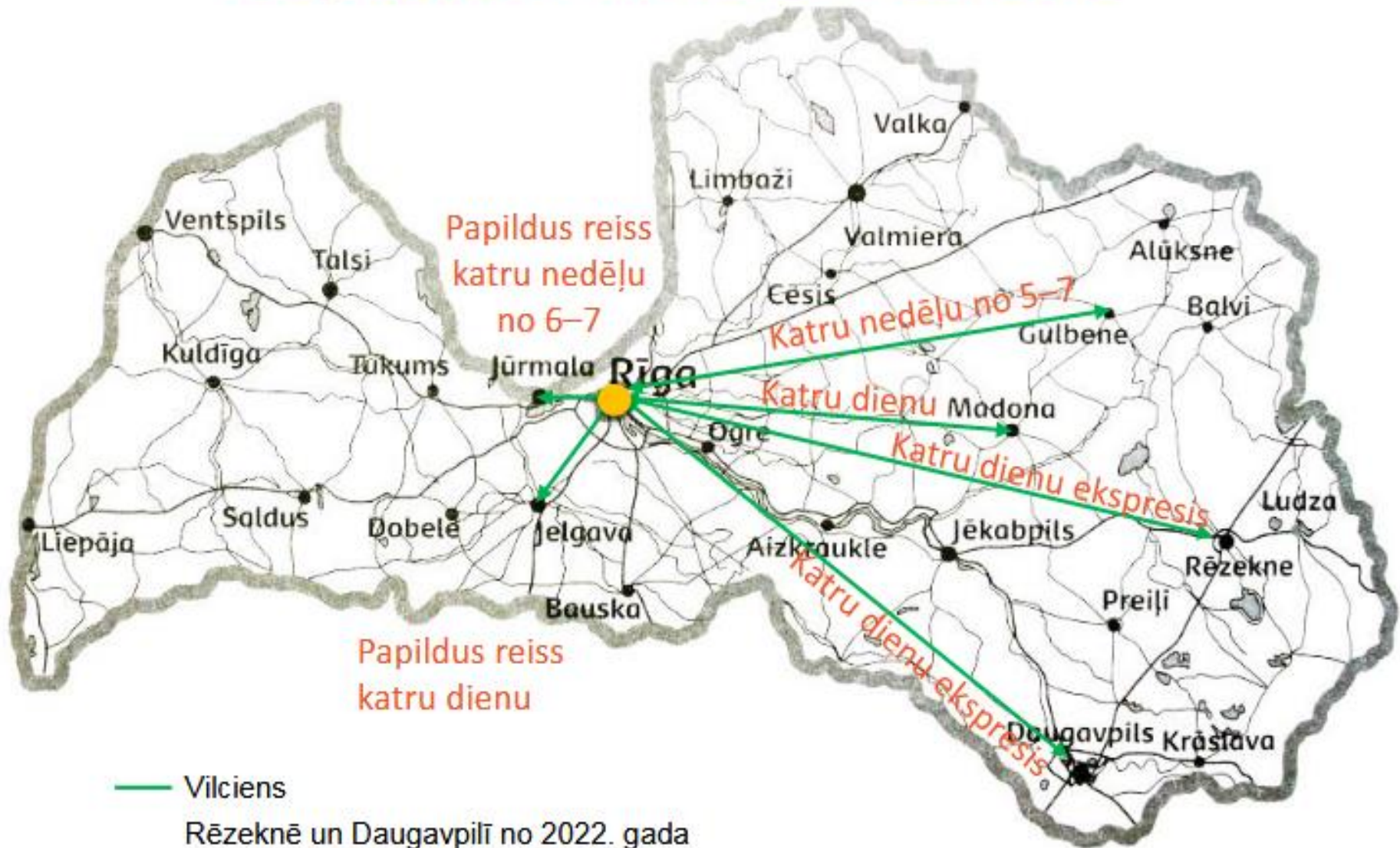
LGWA members from Limbaži, Valmiera, Gulbene, Olaine, Ropaži, Ādaži and Ogre municipalities participates in the development of the Public Transport Plan (submission is planned in 2022);

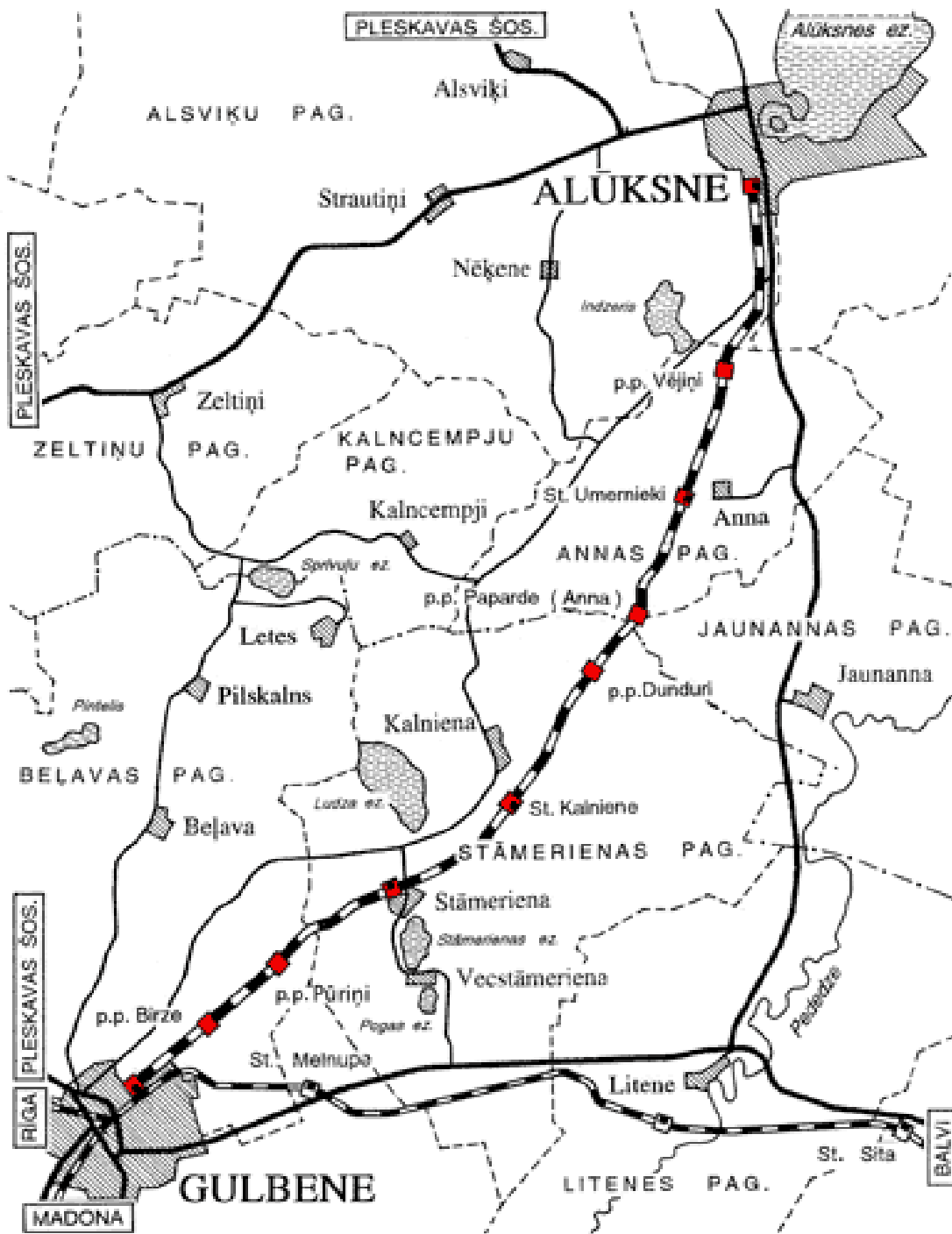
Regular and narrow-gauge trains at Gulbene Railway Station



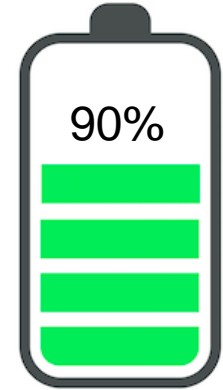
Regular train connection from Riga via Madona - Gulbene Railways station (before 1-2 year)

More frequent train traffic





Action 3: Improving the accessibility of the environment by means of universal design for tourists at greenways & mobility points



Planned

- Elaboration of Technical study for reconstruction works in Saulkrasti station;
- Reconstruction works of Stacijas street (square of the railway station) in Carnikava;
- Information production of the accessibility of a particular parts of cycling routes for target groups in Carnikava, Limbaži. Information includes necessity of assistant required or not, accessibility during different seasons and availability of additional services (Accessibility for all) during the cycling route.

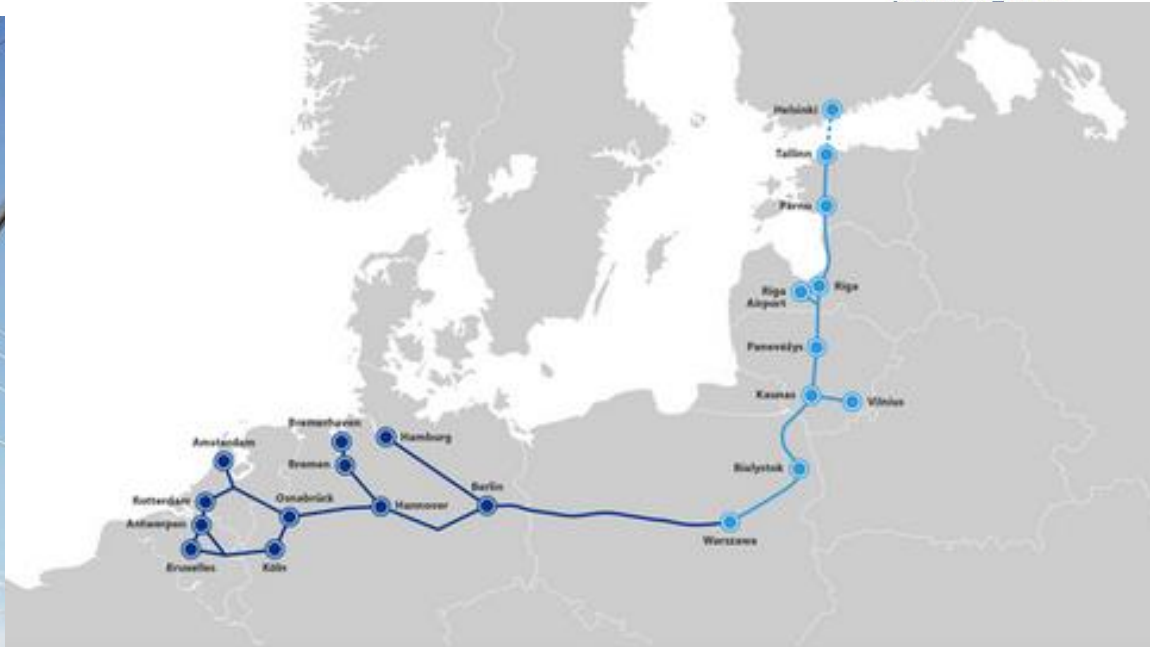
Done

- Planning phase for the implementation of mobility points in Saulkrasti and Carnikava (RRF projects)
- Platform modernization project (Skulte railway line) - access to the environment will be promoted;

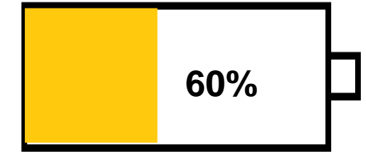
In addition:

New electric (battery) trains from September 2024.

Station design for RailBaltica



Action 4: Updating smarter facilities in greenways for cycling and walking & promotion for visitors



Planned

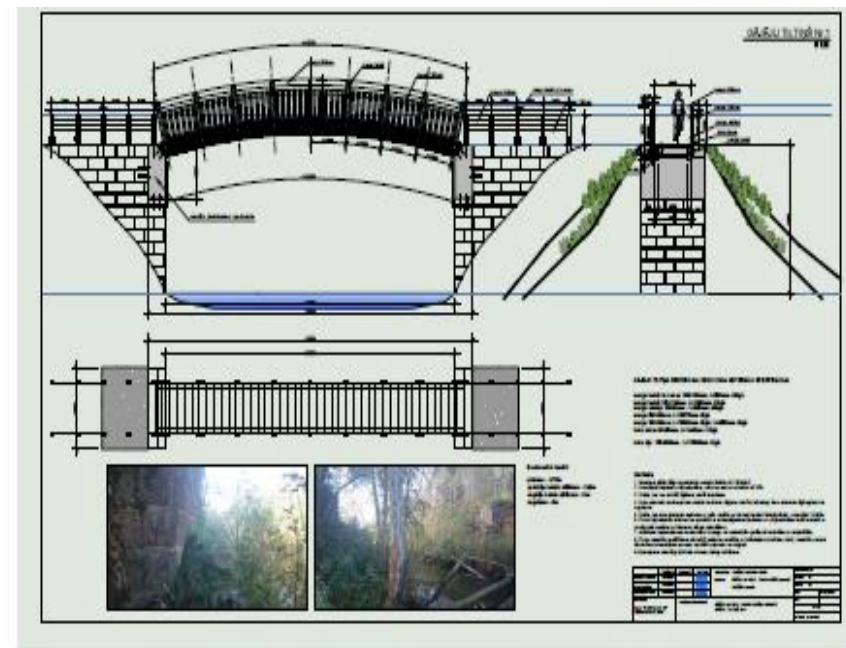
- Development & implementation of new tourism attraction- railway bikes in Olaine (swamp);
- Promotion materials of Greenways Connection of Greenway and railway bike attraction by a new bridge;
- Two Public-private events “Cycling on Greenways” (in Olaine and Zilaiskalns)

Done

- Seda – revitalization of the former rail network for tourism (the development process has started with the municipality) – 25%
- Zilais kalns Greenways bridge connection in finalization process, – 90%



GREENWAYS BRIDGES





Opening of the railbike service at Zilaiskalns



Action 5: (Pilot Action) Testing of Accessible Greenways for Everyone On Demand Service in Vidzeme Region

Planned

- Setting-up the Pilot Activity management group, with representatives of the project Stakeholders;
- Formulating the technical specification for the procurement/price survey of the Equipment (bus, trailer, bikes, e-solution including branding, accessibility requirements);
- Organizations of the tender/price survey according to the National Legislation;
- Concluding the tendering/price survey procedures;
- Introducing the service – promotion via project Stakeholders, as well as at greenways public transportation stops;
- Testing and implementing the Pilot Action in the Nature, monitoring the results and demand

Done

- Purchase of electric mini-bus, 1 e-bike, bike rack completed (90%; remaining: 2-3 e-bikes, solution for accessibility for people with disabilities); equipment pre-tested
- Testing solution (form) created for survey of visitors; use for developing on-demand service online



Requesting the service

REQUEST ZERO-EMISSION GREENWAYS MOBILITY SERVICE

Do you always wanted to visit Vidzeme region greenways, but the public transportation service was not aligned or too far away? Or maybe you don't want to make a round trip? Or just try the benefits of electric mobility?

You are welcome to request, [free-of-charge](#), a mobility service provided by Latvian Greenways Association, by filling out the form below at least **72h before**.

At the moment we can provide the service for up to 6 people (adults), including place for 3 bikes. The service, depending on the time of the year, can provide up to 300km of un-interrupted distance without any Co2 emissions!

Name *

Email Address *

Your message (please, indicate the beginning-end point of your planned greenways journey, number of visitors incl. bikes, other requests) *

Submit

Service provided by Latvian Greenways Association as a Pilot Action for testing Greenways accessibility within Interreg Europe project Desti SMART - Delivering Efficient Sustainable Tourism

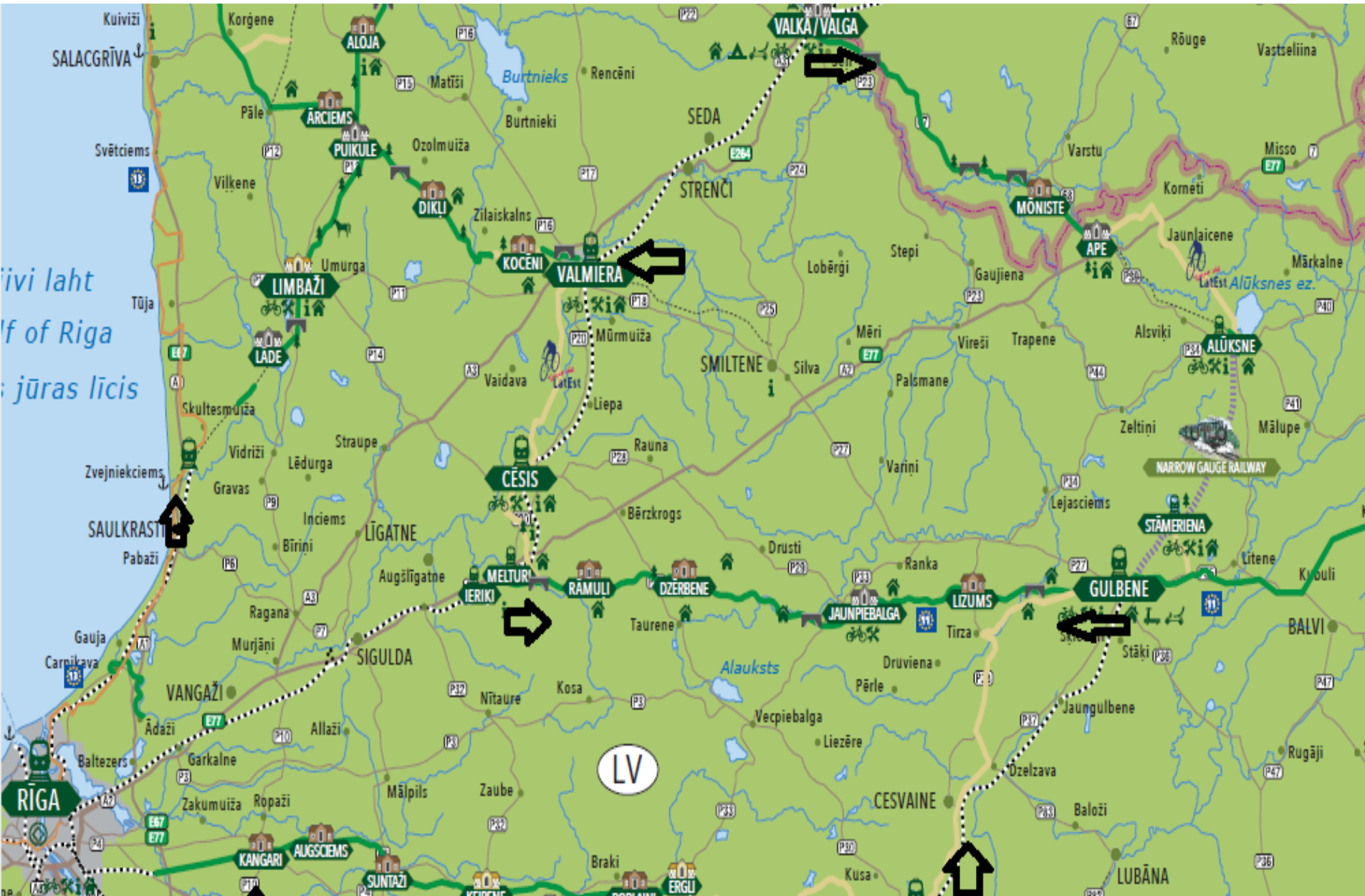


E-bus and hikers on Greenway at Melturi station (Ieriki-Melturi-Gulbene-Vilaka Greenway) EU Railway heritage day



Train timetabling – train service offer to support touristic demand

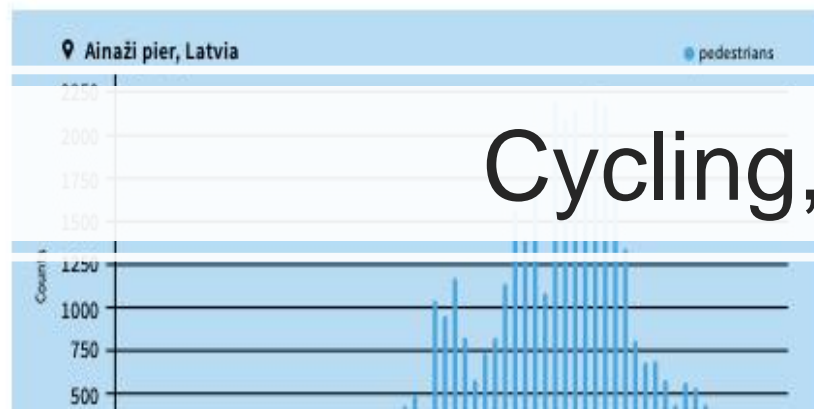
DESTI-SMART
Interreg Europe



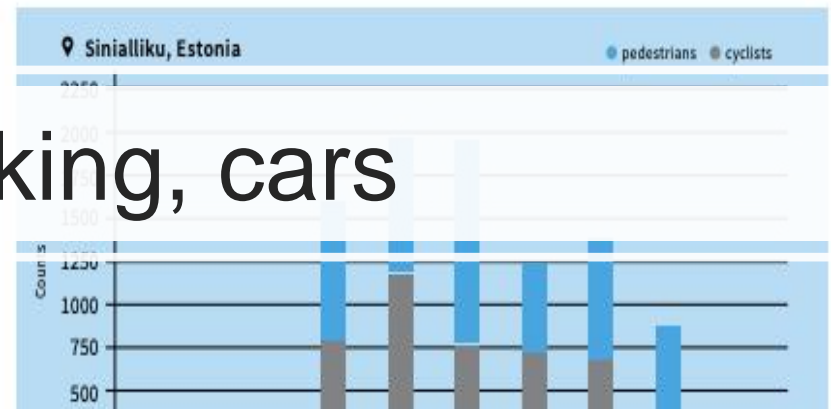
STATISTICS AND VISITOR FLOW

In order to measure the flow of the visitors, counters have been set-up along the Greenways to demonstrate demand and help to understand the visitor's needs. It is planned that more counters will be installed in the future.

Weekly traffic of pedestrians

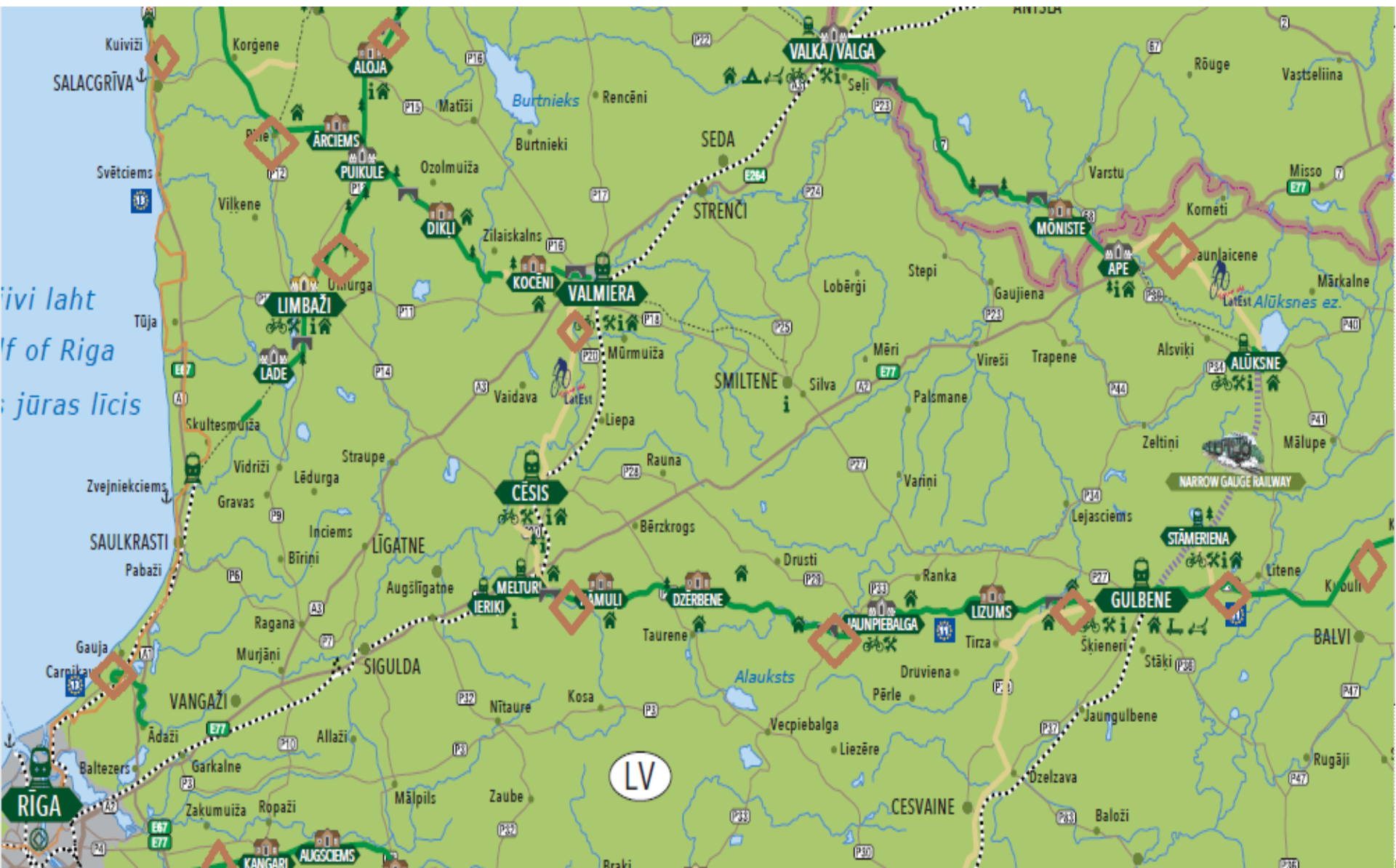


Monthly traffic of pedestrians and cyclists



Cycling, hiking, cars

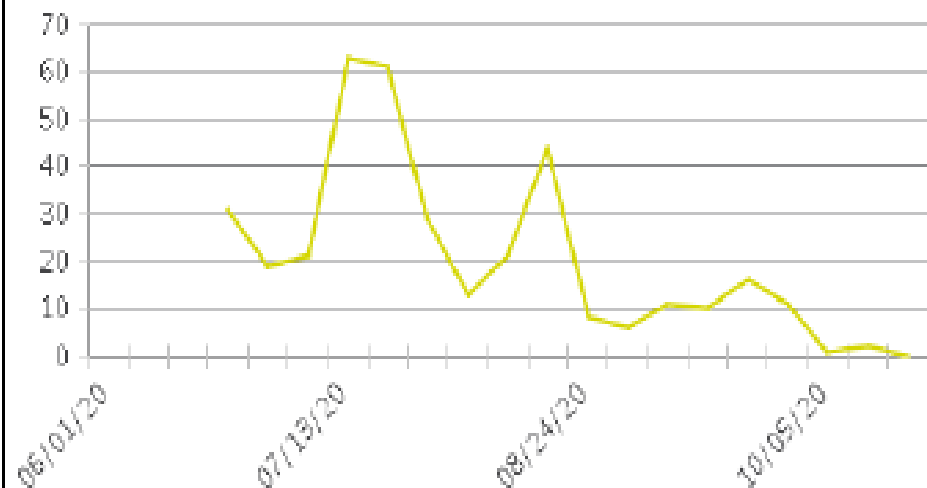
Statistics 2020-2021



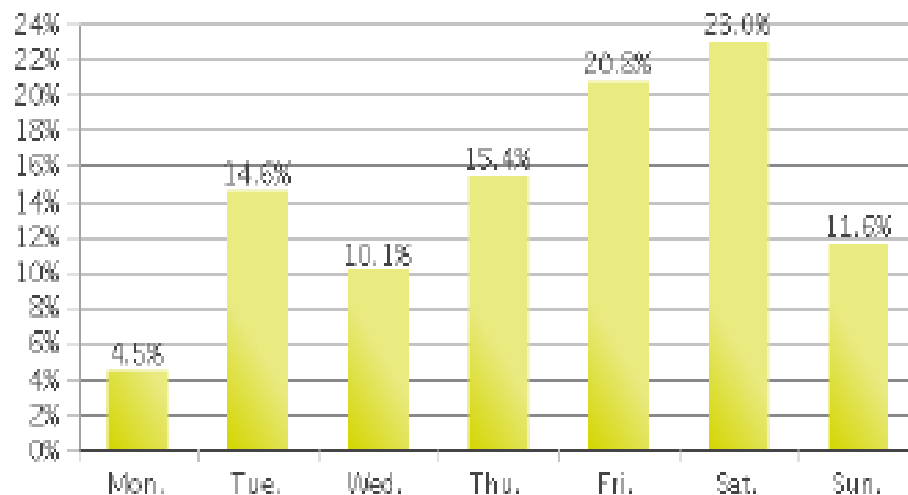
Greenway Gulbene (Cyclists)

Period Analyzed: Monday, June 01, 2020 to Tuesday, October 20, 2020

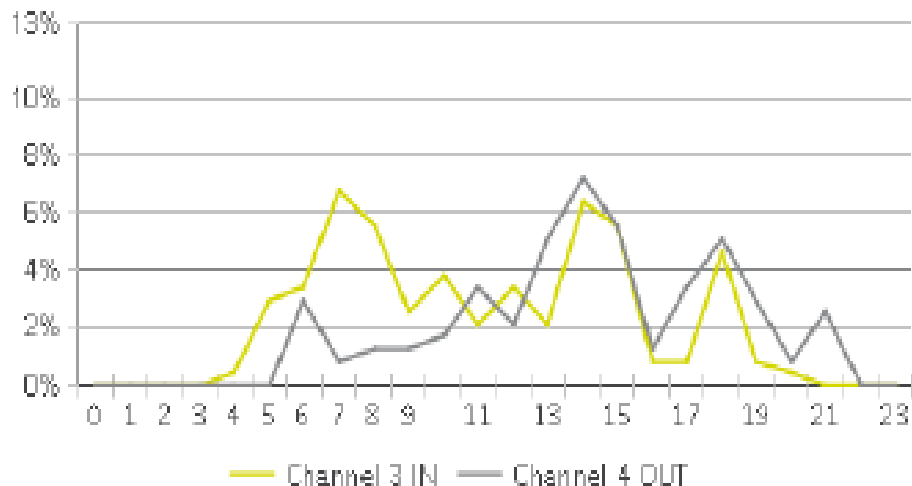
Weekly Traffic



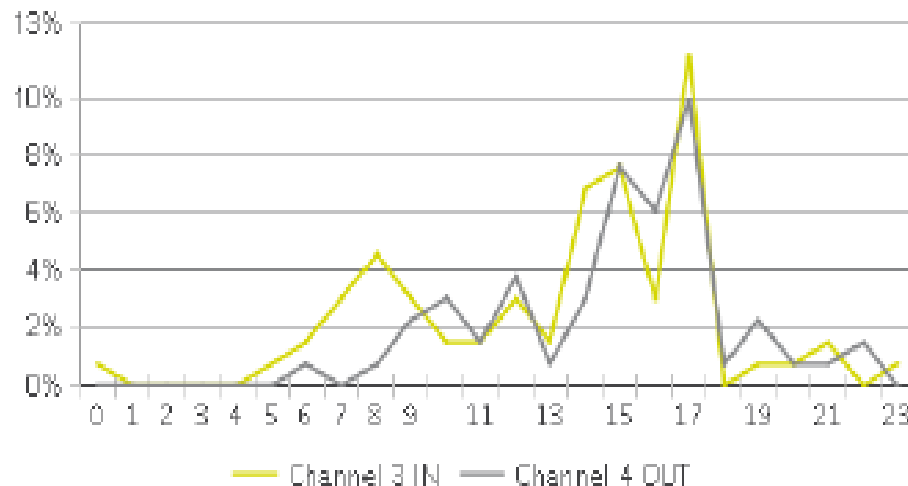
Weekly Profile



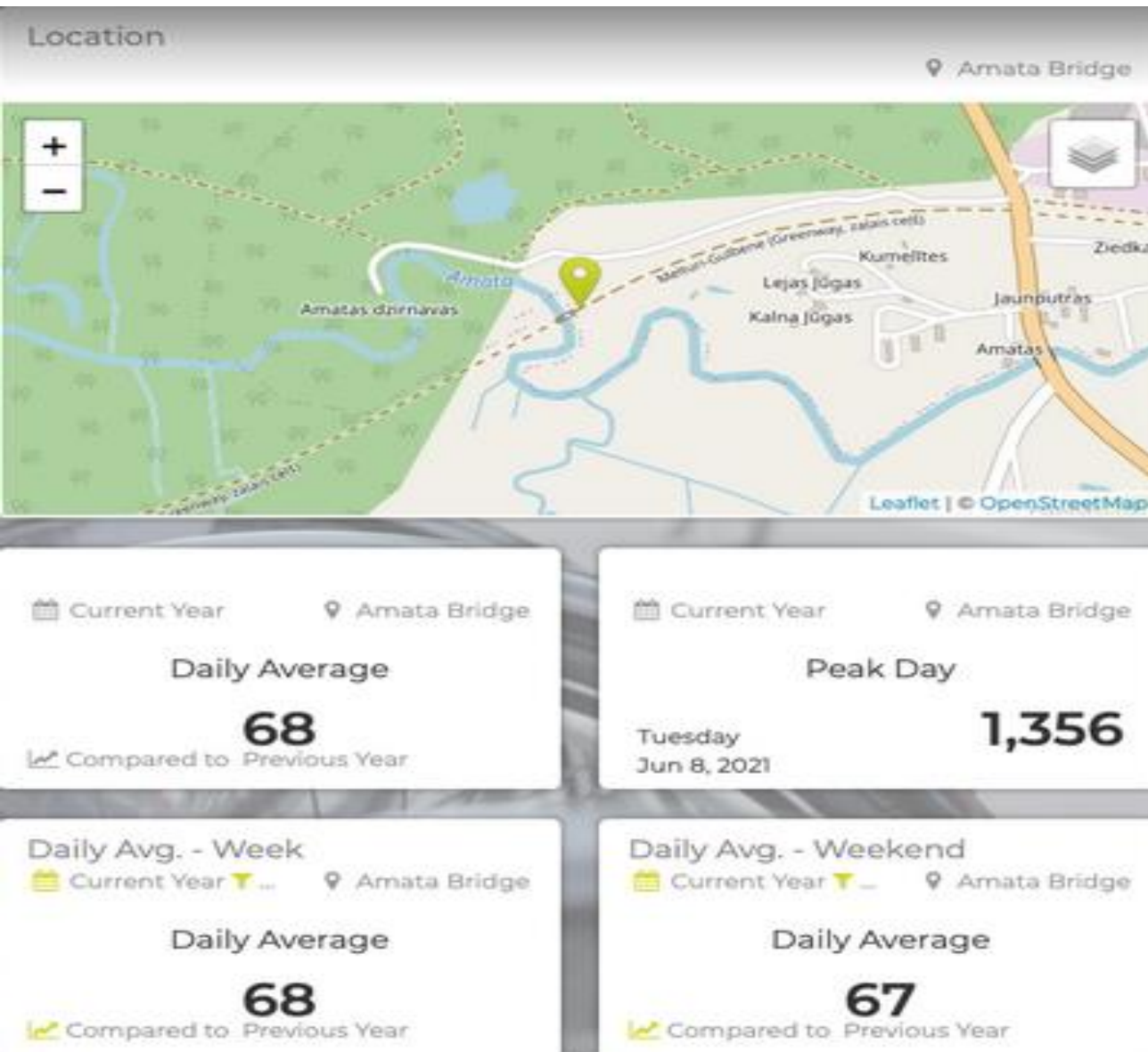
Hourly Profile during Weekdays

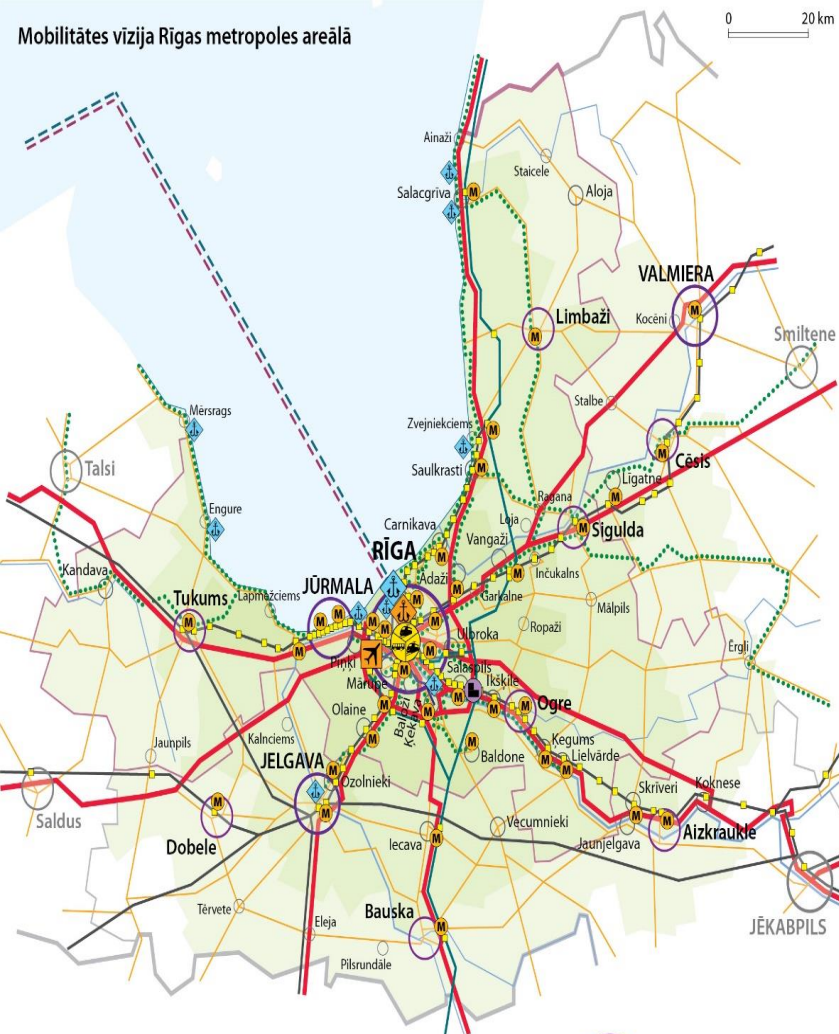


Hourly Profile during the Weekend



Statistics cycling/hiking, cars





Kompleksu satiksmes mezglu

(mobilitātes punktu) izveide

Rīgā un Pierīgā, ērtai un ātrai transporta līdzekļa maiņai (autoosta, dzelzceļa stacija, Park&Ride, velonovietnes, uzlādes punkti, u.c.);

Mobilitātes infrastruktūras uzlabošana,

nosakot sliežu transportu (dzelzceļš, tramvajs) par sabiedriskā transporta “mugurkaulu”;

Vienota sabiedriskā transporta tīkla

izveide:

maršruti un vienota biļete, elektroniskie saraksti, mobilās aplikācijas, augstākā prioritāte publiskajam transportam;

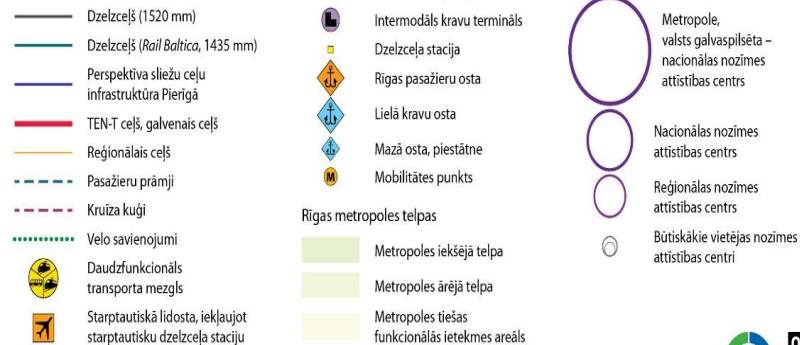
Reģionālie veloceļi, Rīgas - Pierīgas

savienojumi;

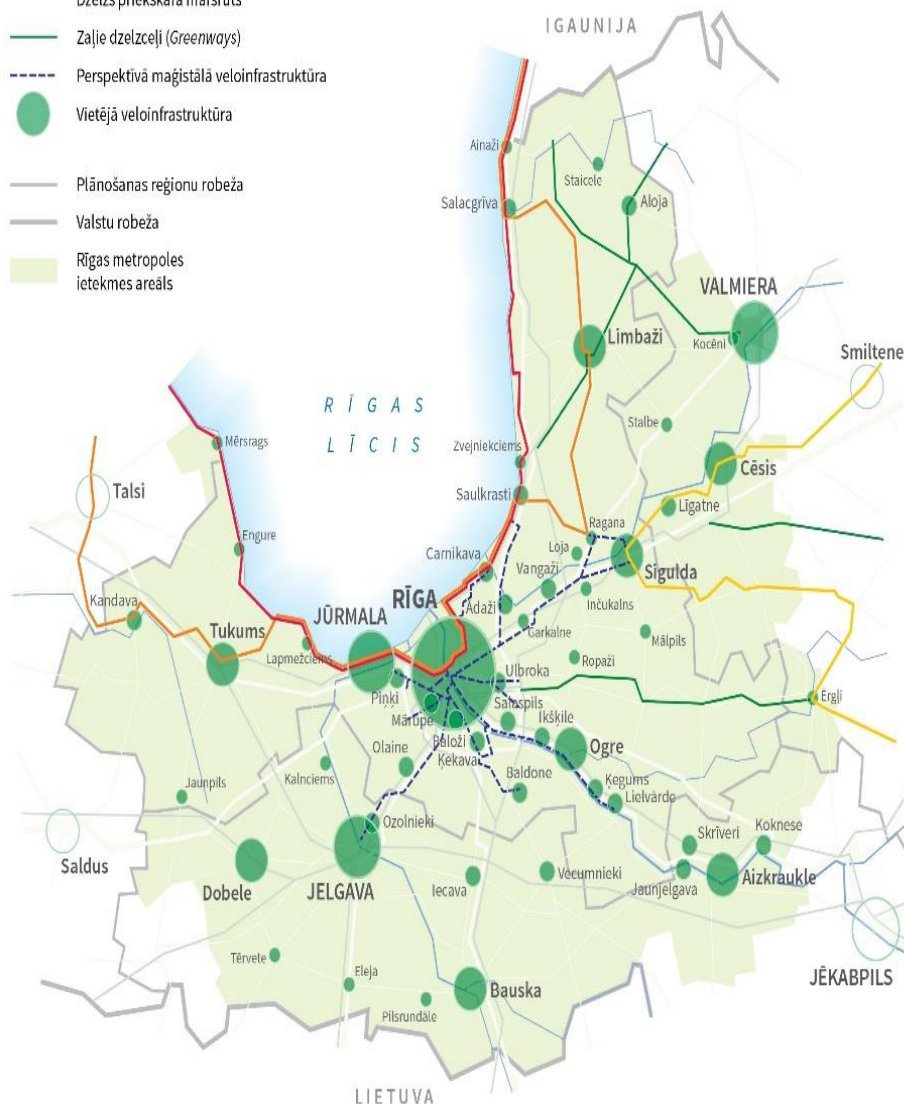
Ūdenstransporta attīstība - saistītā

infrastruktūra (ostas, pietātnes) un iekšējie ūdensceļi;

Pierīgas tramvaja līniju attīstība un



- EuroVelo 10
Apkārta Baltijas jūrai
- EuroVelo 11
Austrumeiropas velo maršruts
- EuroVelo 13
Dzelzs priekškara maršruts
- Zālie dzelzceļi (Greenways)
- - - Perspektīvā maģistrālā veloinfrastruktūra
- Vietējā veloinfrastruktūra
- Plānošanas reģionu robeža
- Valstu robeža
- Rīgas metropoles ietekmes areāls



1. **RĪGA-CARNIKAVA-Saulkrasti-Ainaži; Saulkrasti-Limbaži (Euro Velo 10 un 13);**
2. **Rīga-Sigulda**, atzars uz Ādažiem, atzars uz Raganu (Reģiona perspektīvā maģistrālā velo infrastruktūra)
3. **RĪGA-ULBROKA (P4;P5)**, potenciāli arī perspektīvais Greenway. Ulbroka-Ērgļi
4. **Rīga-Lielvārde** (Reģiona perspektīvā maģistrālā velo infrastruktūra)
5. **RĪGA-ĶEKAVA-Baldone** (Reģiona perspektīvā maģistrālā velo infrastruktūra)
6. **Rīga-Olaine-Jelgava** (Reģiona perspektīvā maģistrālā velo infrastruktūra)
7. **RĪGA-MĀRUPE** (Reģiona perspektīvā maģistrālā velo infrastruktūra)

Thank you very much for your support!!

www.greenrailways.eu

[Fb.com/greenwayslv](https://fb.com/greenwayslv)

info@greenways.lv



Raitis Sijāts

